

# Andante in B Flat

1

Measures 1-4 of the piece. The treble clef staff has a key signature of two flats (B-flat and E-flat) and a 2/4 time signature. The bass clef staff has a key signature of two flats. The notation includes a 3-measure rest in measure 1, followed by eighth notes in measures 2 and 3, and a 5-measure rest in measure 4. The bass clef staff has a 4-measure rest in measure 1, followed by eighth notes in measures 2 and 3, and a 5-measure rest in measure 4.

5

Measures 5-8 of the piece. The treble clef staff has a 4-measure rest in measure 5, followed by eighth notes in measures 6 and 7, and a 5-measure rest in measure 8. The bass clef staff has a 4-measure rest in measure 5, followed by eighth notes in measures 6 and 7, and a 5-measure rest in measure 8.

9

Measures 9-12 of the piece. The treble clef staff has a 4-measure rest in measure 9, followed by eighth notes in measures 10 and 11, and a 5-measure rest in measure 12. The bass clef staff has a 4-measure rest in measure 9, followed by eighth notes in measures 10 and 11, and a 5-measure rest in measure 12.

13

Measures 13-16 of the piece. The treble clef staff has a 4-measure rest in measure 13, followed by eighth notes in measures 14 and 15, and a 5-measure rest in measure 16. The bass clef staff has a 4-measure rest in measure 13, followed by eighth notes in measures 14 and 15, and a 5-measure rest in measure 16.

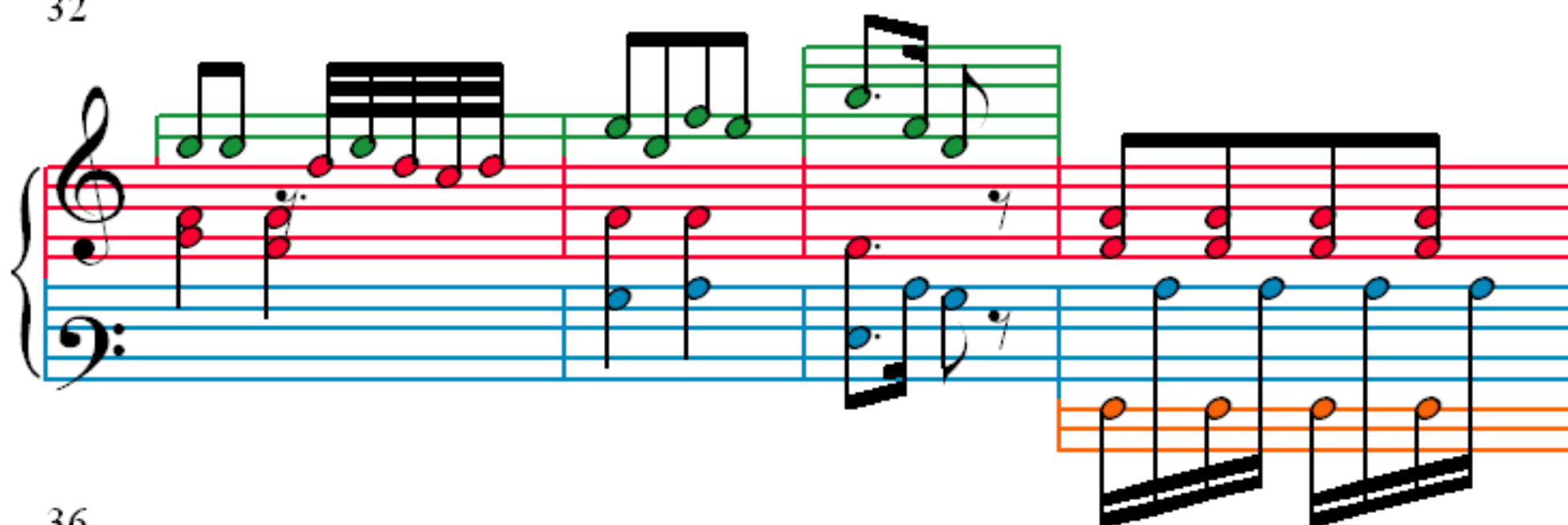
17

21

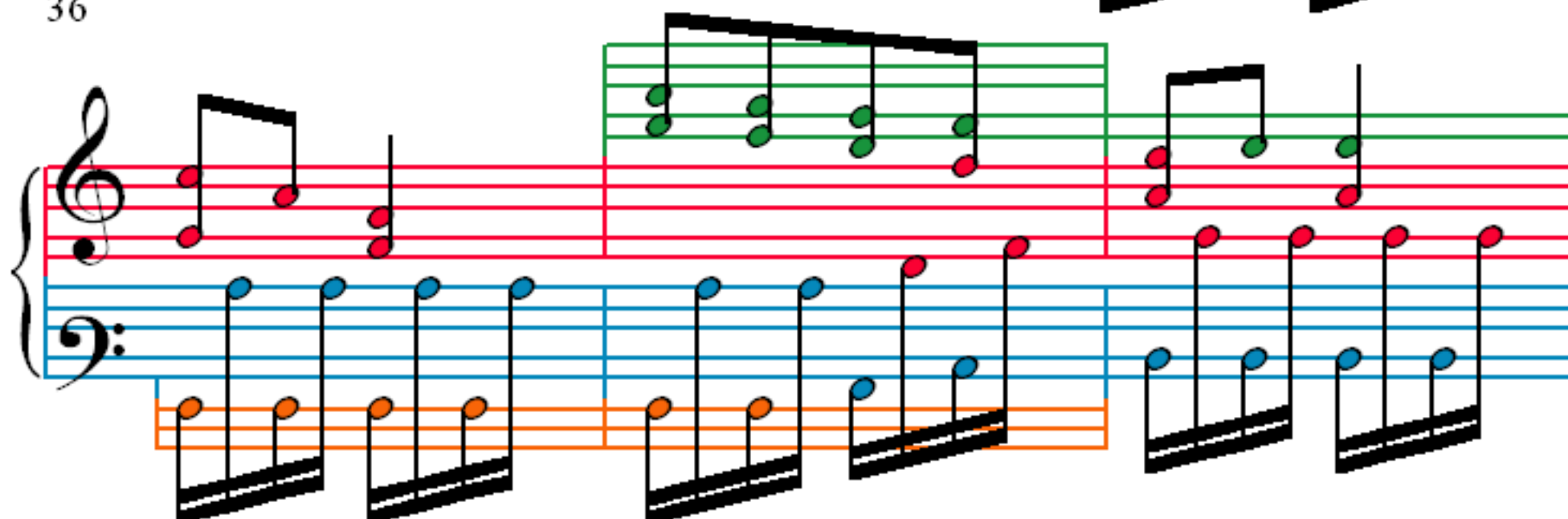
24

28

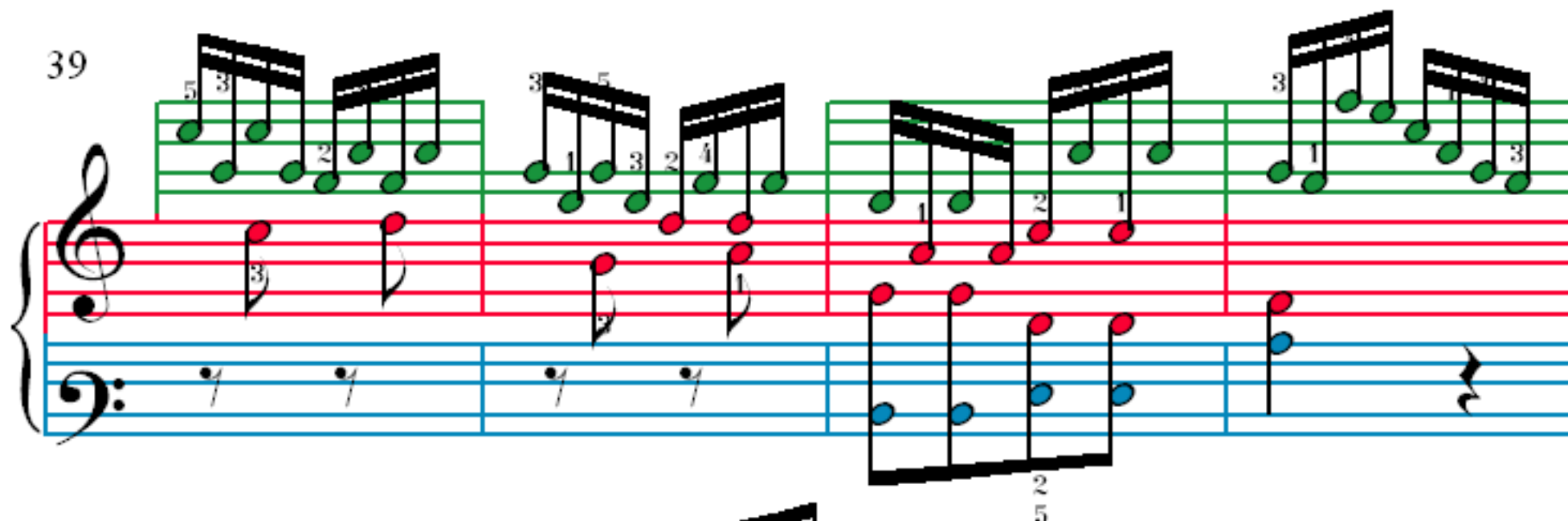
32



36



39



43

