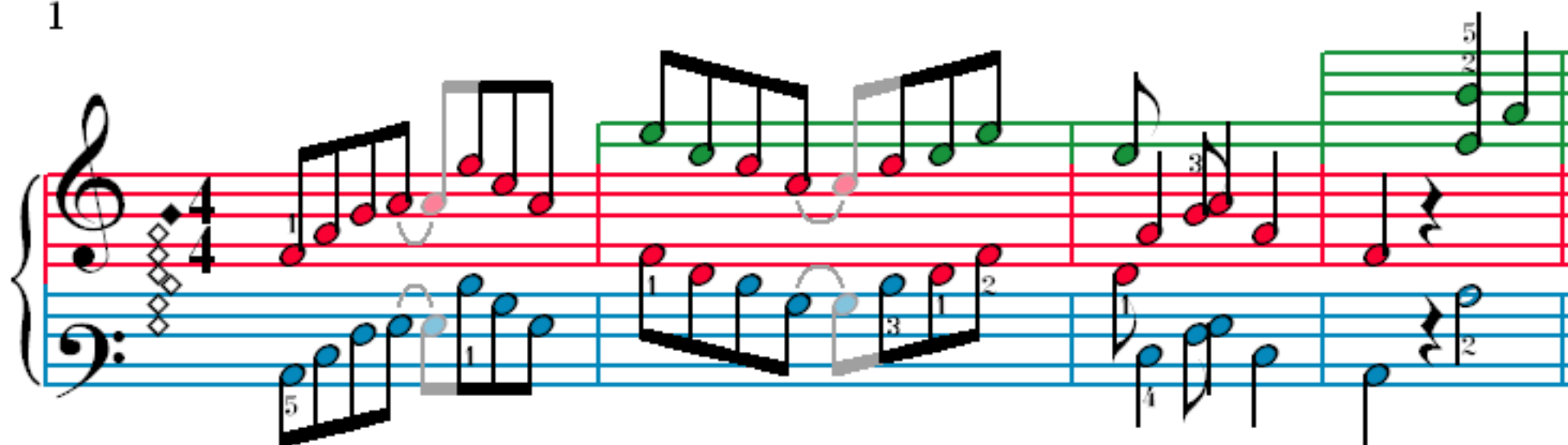


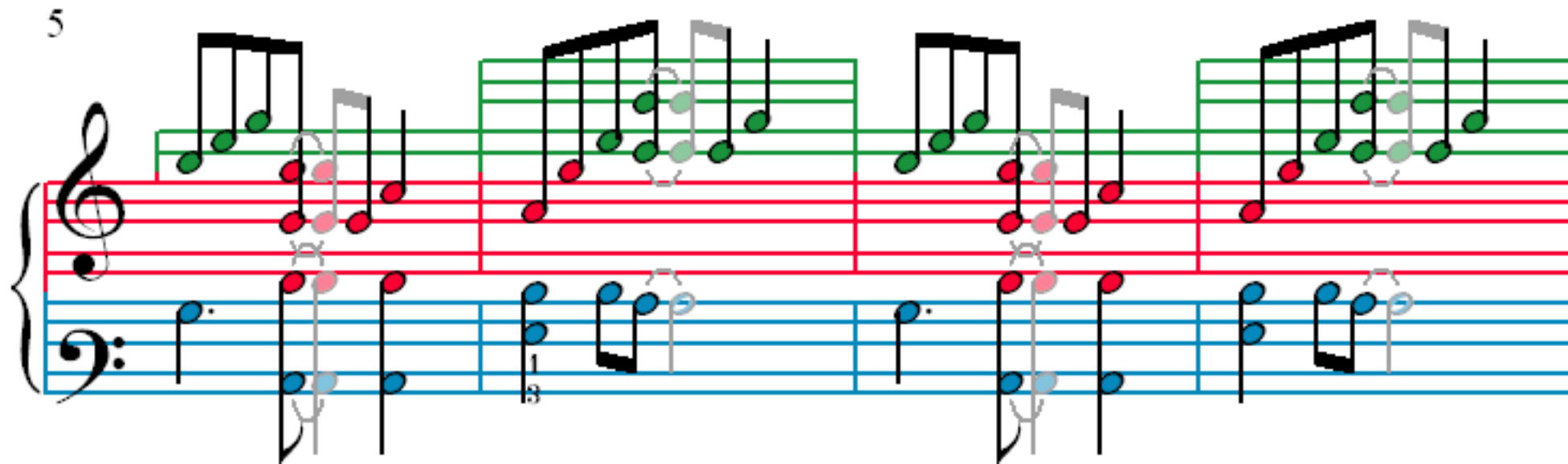
Heliotrope Bouquet

Scott Joplin

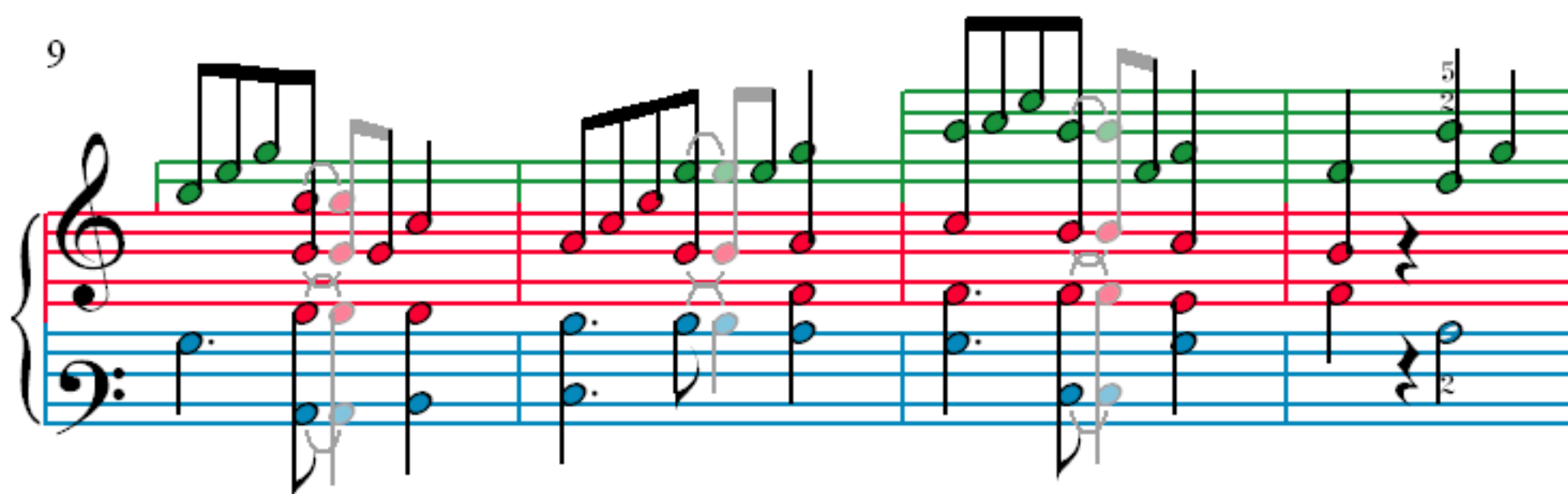
1



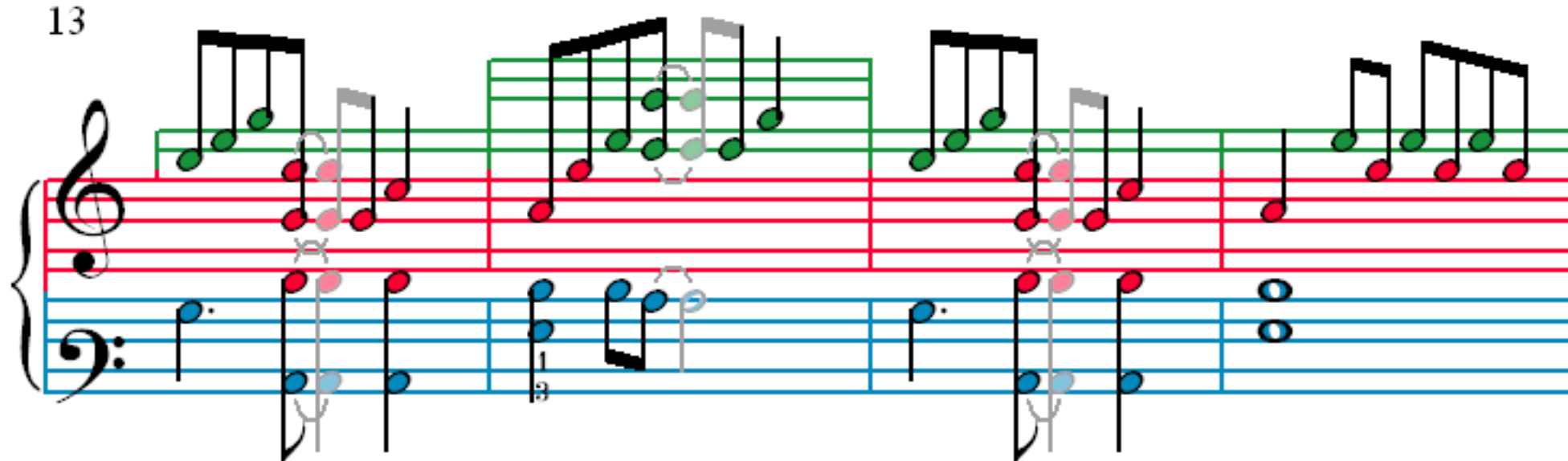
5



9



13



17

21

25

29

33

1

37

2

3

40

4

5

43

6

7

46

49

53

57

61

Measures 61-63. Treble clef: Measure 61 has a slur over notes with fingerings 1, 4, 5. Measure 62 has a slur over notes with fingering 3. Measure 63 has a slur over notes with fingering 1. Bass clef: Measure 61 has a slur over notes with fingering 2. Measure 62 has a slur over notes with fingering 1. Measure 63 has a slur over notes with fingering 3.

64

Measures 64-66. Treble clef: Measure 64 has a slur over notes with fingerings 2, 1. Measure 65 has a slur over notes with fingerings 5, 4, 3, 2. Measure 66 has a slur over notes with fingerings 1, 3. Bass clef: Measure 64 has a slur over notes with fingering 2. Measure 65 has a slur over notes with fingering 1. Measure 66 has a slur over notes with fingering 3.

67

Measures 67-69. Treble clef: Measure 67 has a slur over notes with fingering 1. Measure 68 has a slur over notes with fingering 1. Measure 69 has a slur over notes with fingering 1. Bass clef: Measure 67 has a slur over notes with fingering 2. Measure 68 has a slur over notes with fingering 1. Measure 69 has a slur over notes with fingering 3.

70

Measures 70-72. Treble clef: Measure 70 has a slur over notes with fingerings 2, 3, 4. Measure 71 has a slur over notes with fingerings 1, 2. Measure 72 has a slur over notes with fingerings 1, 2. Bass clef: Measure 70 has a slur over notes with fingerings 3, 2. Measure 71 has a slur over notes with fingering 1. Measure 72 has a slur over notes with fingerings 1, 2.

74

Measures 74-76 of a piano piece. The right hand (treble clef) features a series of ascending and descending eighth-note runs, with some notes highlighted in green and others in red. The left hand (bass clef) plays a steady eighth-note accompaniment, with some notes highlighted in blue and others in orange. Measure 75 includes a repeat sign. Measure 76 ends with a double bar line.

77

Measures 77-79 of a piano piece. The right hand continues with eighth-note runs, featuring green and red highlights. The left hand maintains the eighth-note accompaniment with blue and orange highlights. Measure 78 includes a repeat sign. Measure 79 ends with a double bar line.

80

Measures 80-83 of a piano piece. The right hand features more complex eighth-note patterns, including some beamed sixteenth notes, with green and red highlights. The left hand continues the eighth-note accompaniment with blue and orange highlights. Measure 81 includes a repeat sign. Measure 83 ends with a double bar line.

84

Measures 84-86 of a piano piece. The right hand features eighth-note runs and some rests, with green and red highlights. The left hand continues the eighth-note accompaniment with blue and orange highlights. Measure 85 includes a repeat sign. Measure 86 ends with a double bar line.