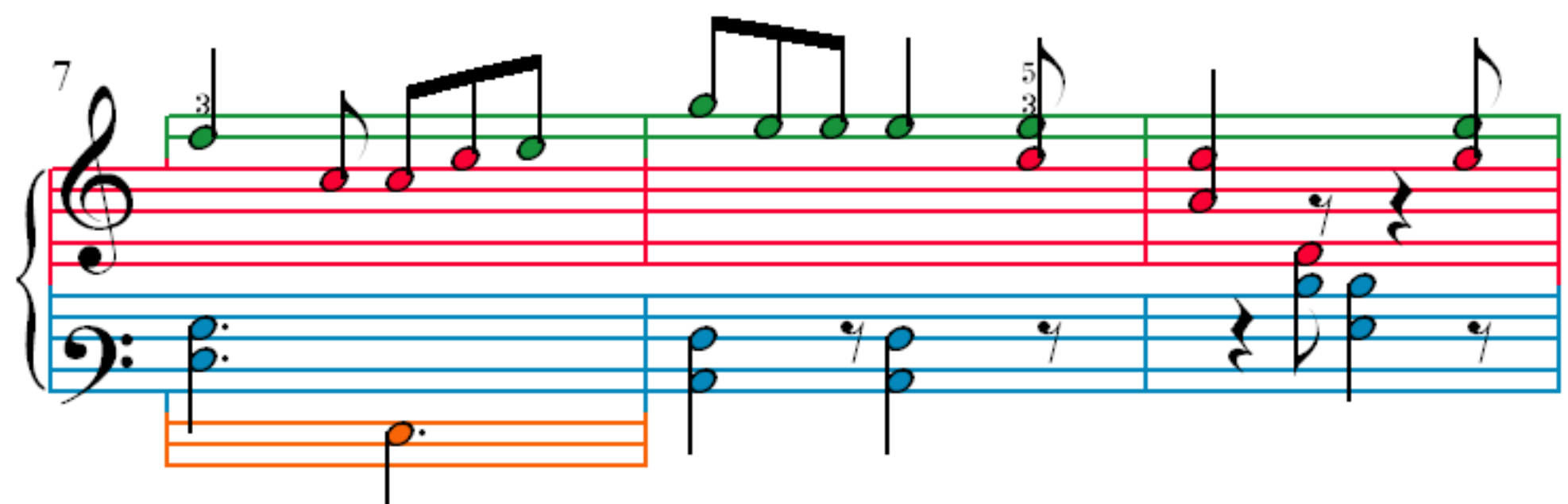
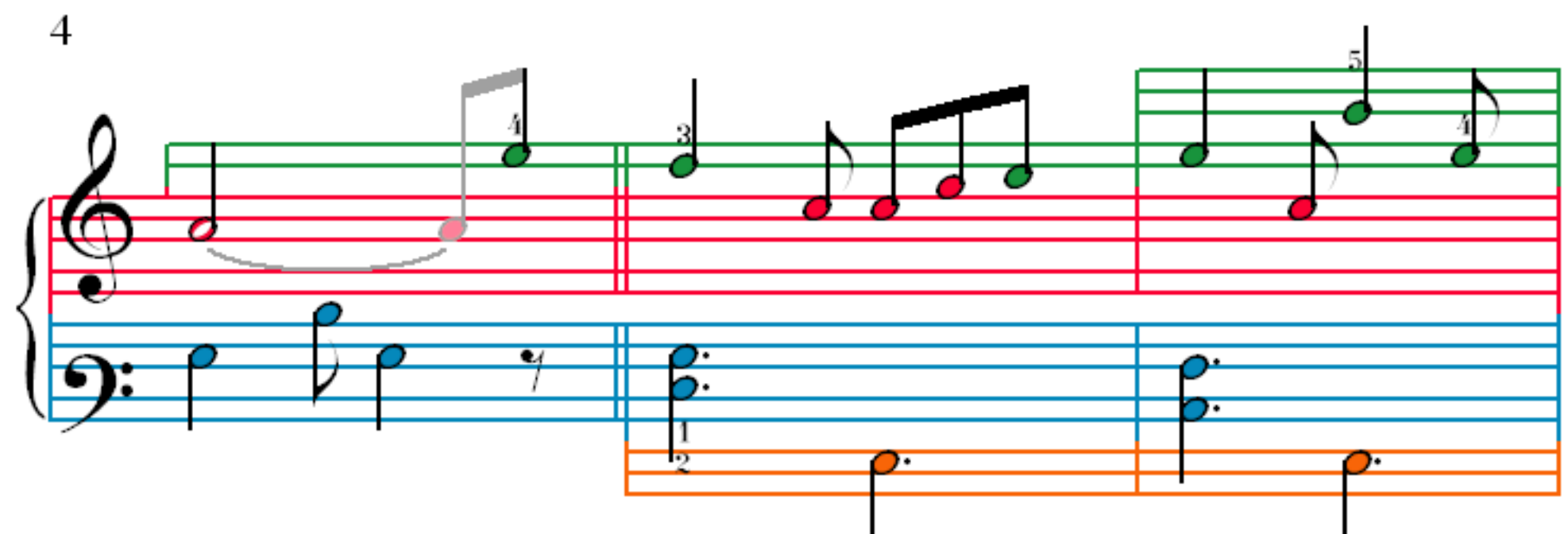
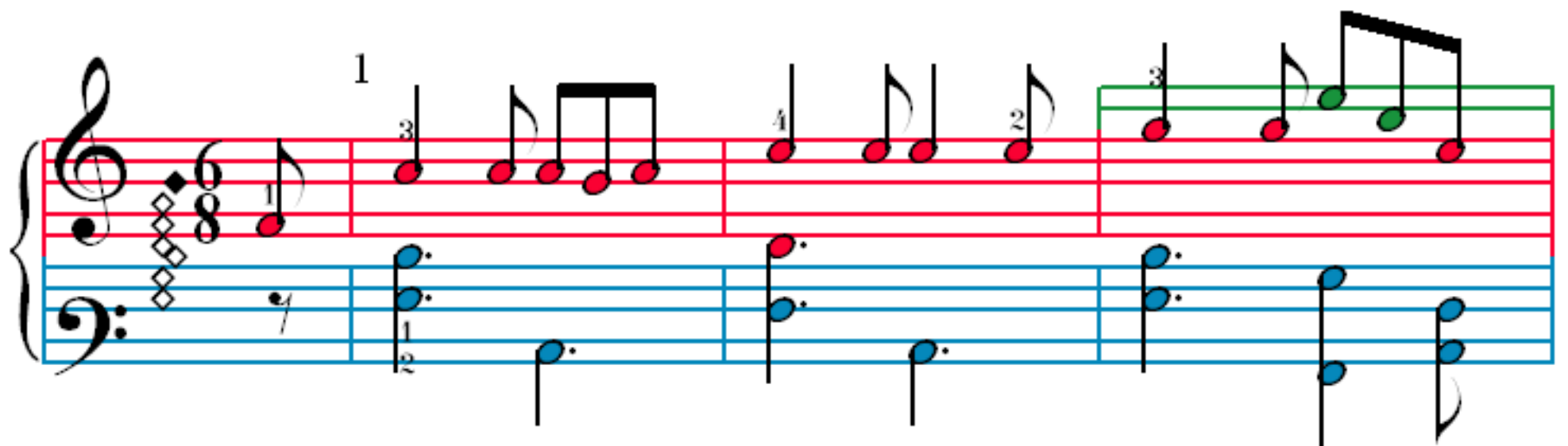


# From the Black Forest



13

Measures 13-16. Treble clef: Measure 13 (F4, G4, A4, B4), Measure 14 (C5, B4, A4, G4), Measure 15 (F4, E4, D4, C4), Measure 16 (B3, A3, G3, F3). Bass clef: Measure 13 (F3, E3, D3, C3), Measure 14 (B2, A2, G2, F2), Measure 15 (E2, D2, C2, B1), Measure 16 (A1, G1, F1, E1). Fingerings: Treble (13: 1, 2, 3, 4; 14: 3, 2, 1, 4; 15: 1, 2, 3, 4; 16: 1, 2, 3, 4). Bass (13: 3, 5; 14: 3, 5; 15: 1, 2, 3, 4; 16: 1, 2, 3, 4).

17

Measures 17-20. Treble clef: Measure 17 (F4, G4, A4, B4), Measure 18 (C5, B4, A4, G4), Measure 19 (F4, E4, D4, C4), Measure 20 (B3, A3, G3, F3). Bass clef: Measure 17 (F3, E3, D3, C3), Measure 18 (B2, A2, G2, F2), Measure 19 (E2, D2, C2, B1), Measure 20 (A1, G1, F1, E1). Fingerings: Treble (17: 1, 2, 3, 4; 18: 3, 2, 1, 4; 19: 1, 2, 3, 4; 20: 1, 2, 3, 4). Bass (17: 3, 5; 18: 3, 5; 19: 1, 2, 3, 4; 20: 1, 2, 3, 4).

21

Measures 21-24. Treble clef: Measure 21 (F4, G4, A4, B4), Measure 22 (C5, B4, A4, G4), Measure 23 (F4, E4, D4, C4), Measure 24 (B3, A3, G3, F3). Bass clef: Measure 21 (F3, E3, D3, C3), Measure 22 (B2, A2, G2, F2), Measure 23 (E2, D2, C2, B1), Measure 24 (A1, G1, F1, E1). Fingerings: Treble (21: 1, 2, 3, 4; 22: 3, 2, 1, 4; 23: 1, 2, 3, 4; 24: 1, 2, 3, 4). Bass (21: 1, 2, 3, 4; 22: 1, 2, 3, 4; 23: 1, 2, 3, 4; 24: 1, 2, 3, 4).

25

Measures 25-28. Treble clef: Measure 25 (F4, G4, A4, B4), Measure 26 (C5, B4, A4, G4), Measure 27 (F4, E4, D4, C4), Measure 28 (B3, A3, G3, F3). Bass clef: Measure 25 (F3, E3, D3, C3), Measure 26 (B2, A2, G2, F2), Measure 27 (E2, D2, C2, B1), Measure 28 (A1, G1, F1, E1). Fingerings: Treble (25: 1, 2, 3, 4; 26: 3, 2, 1, 4; 27: 1, 2, 3, 4; 28: 1, 2, 3, 4). Bass (25: 1, 2, 3, 4; 26: 1, 2, 3, 4; 27: 1, 2, 3, 4; 28: 1, 2, 3, 4).

