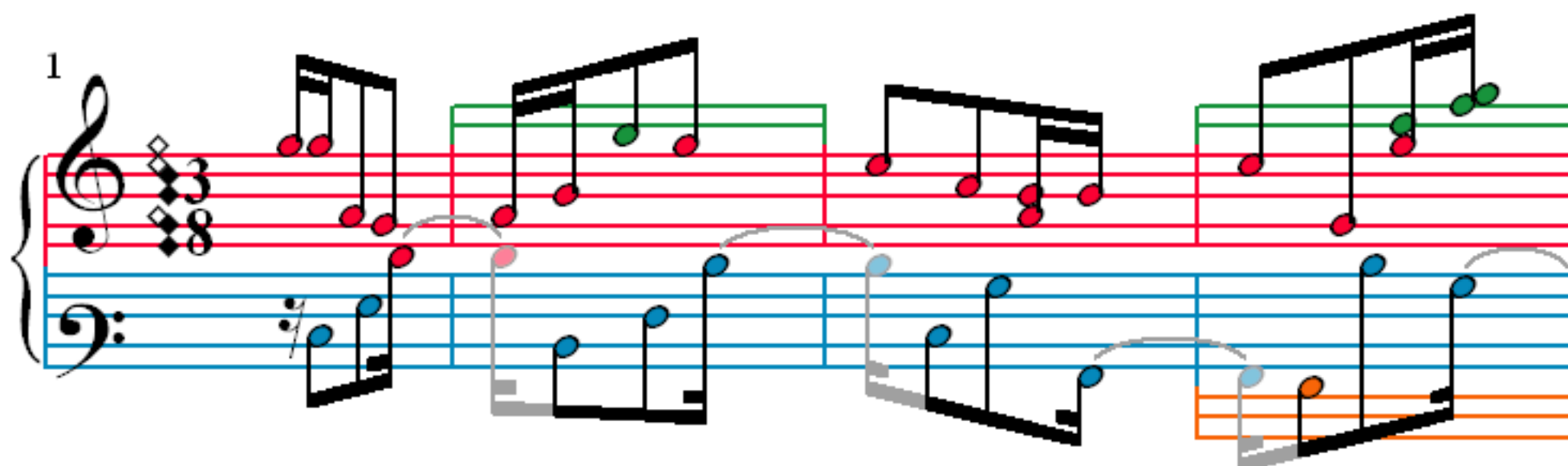


Keyboard partita in E minor

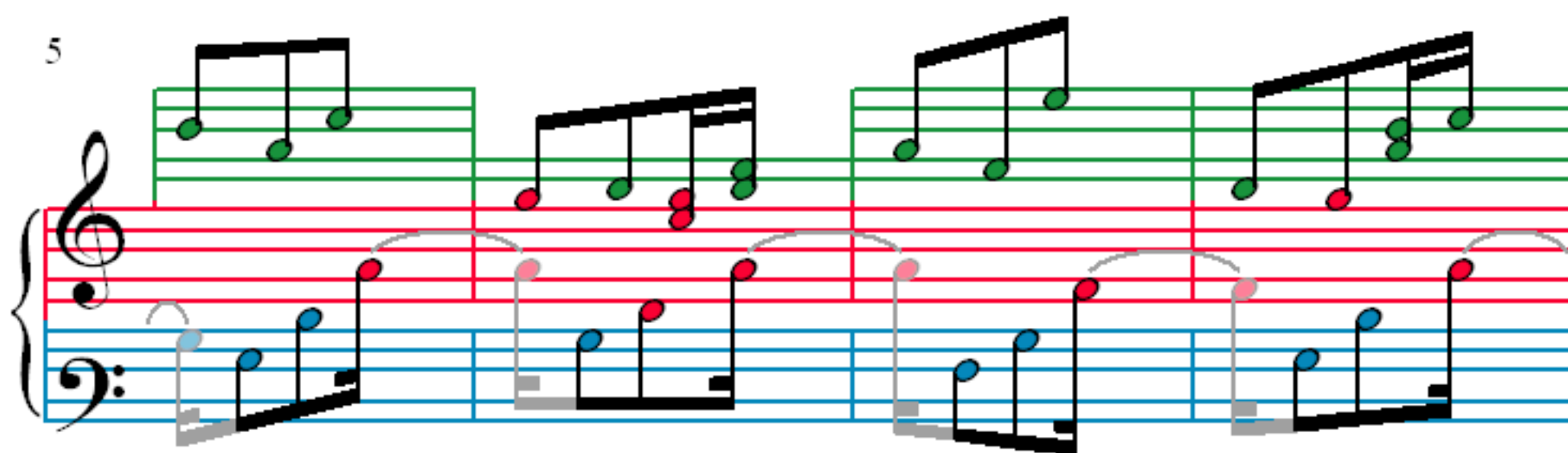
BWV-830-2

J. S. Bach (1685–1750)

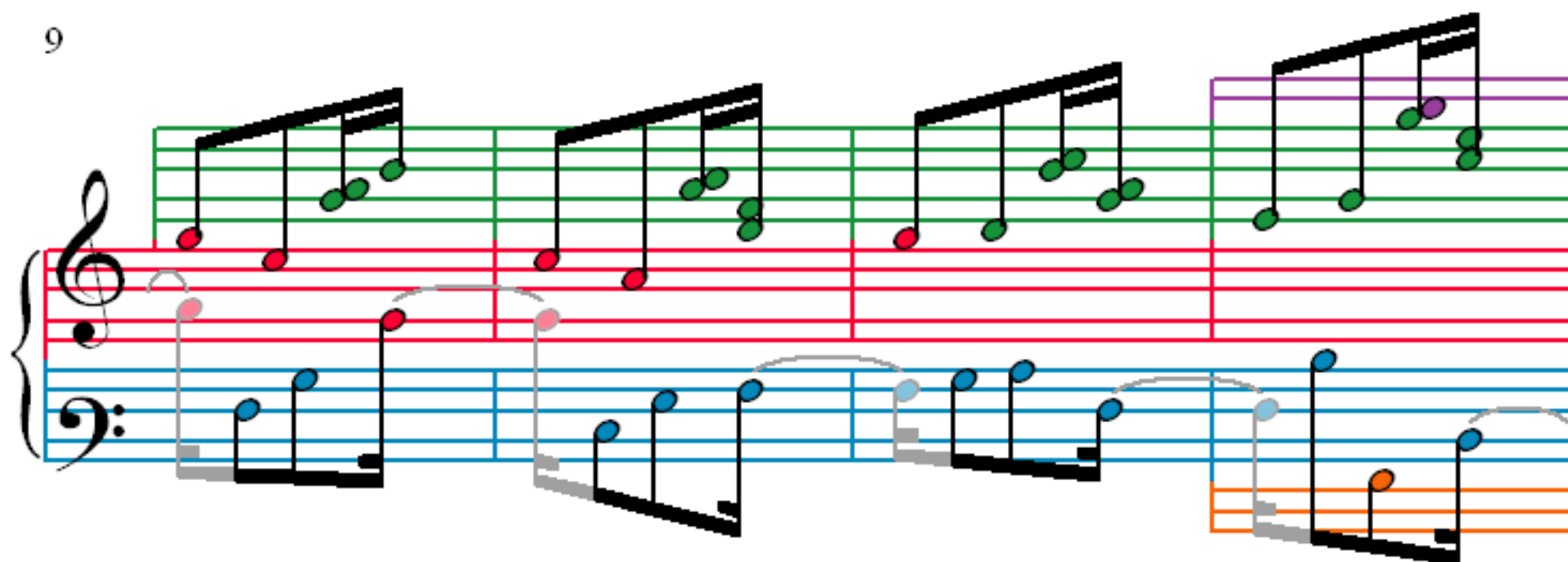
1



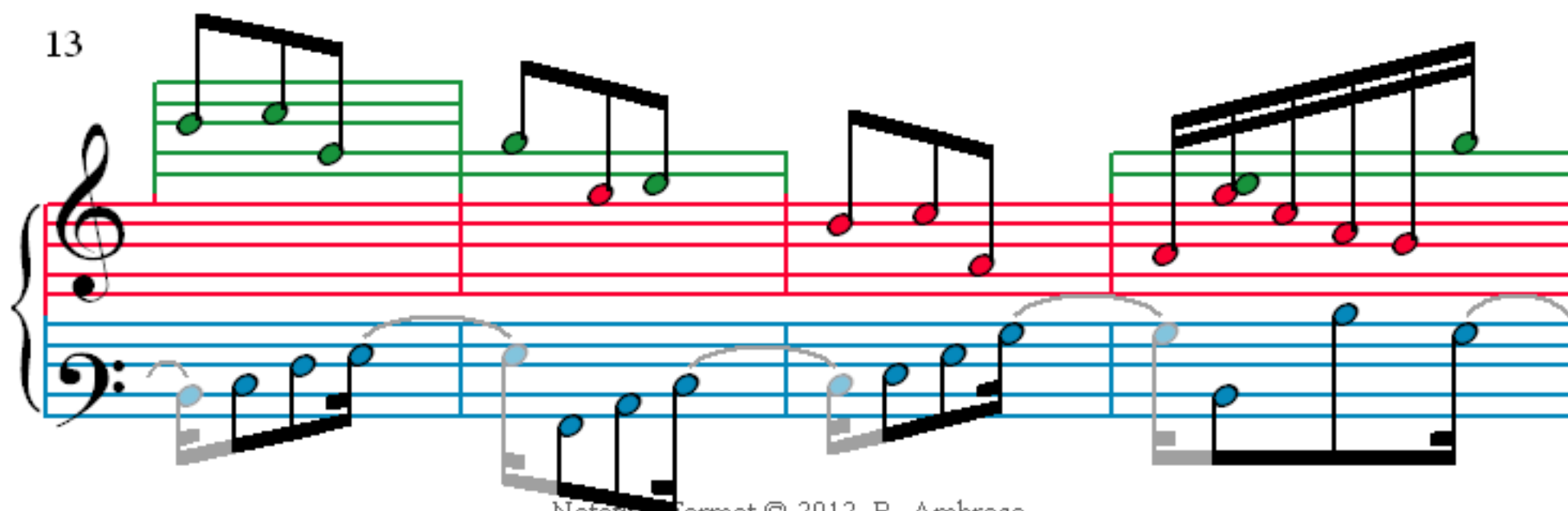
5



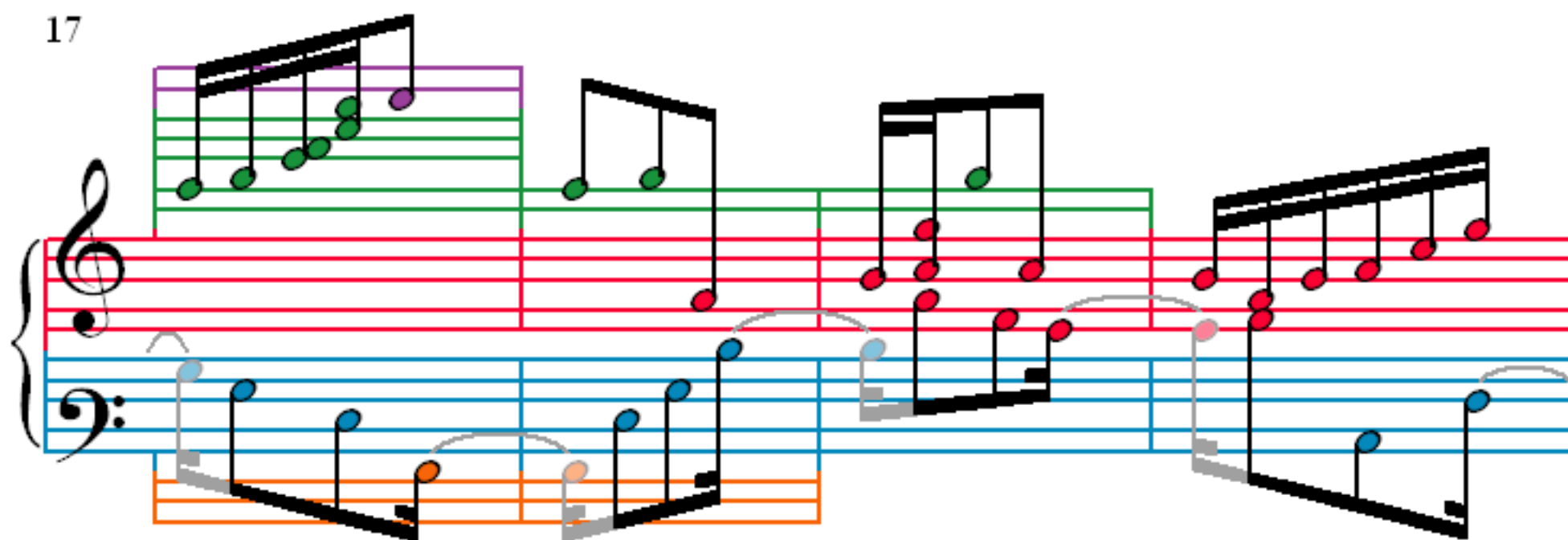
9



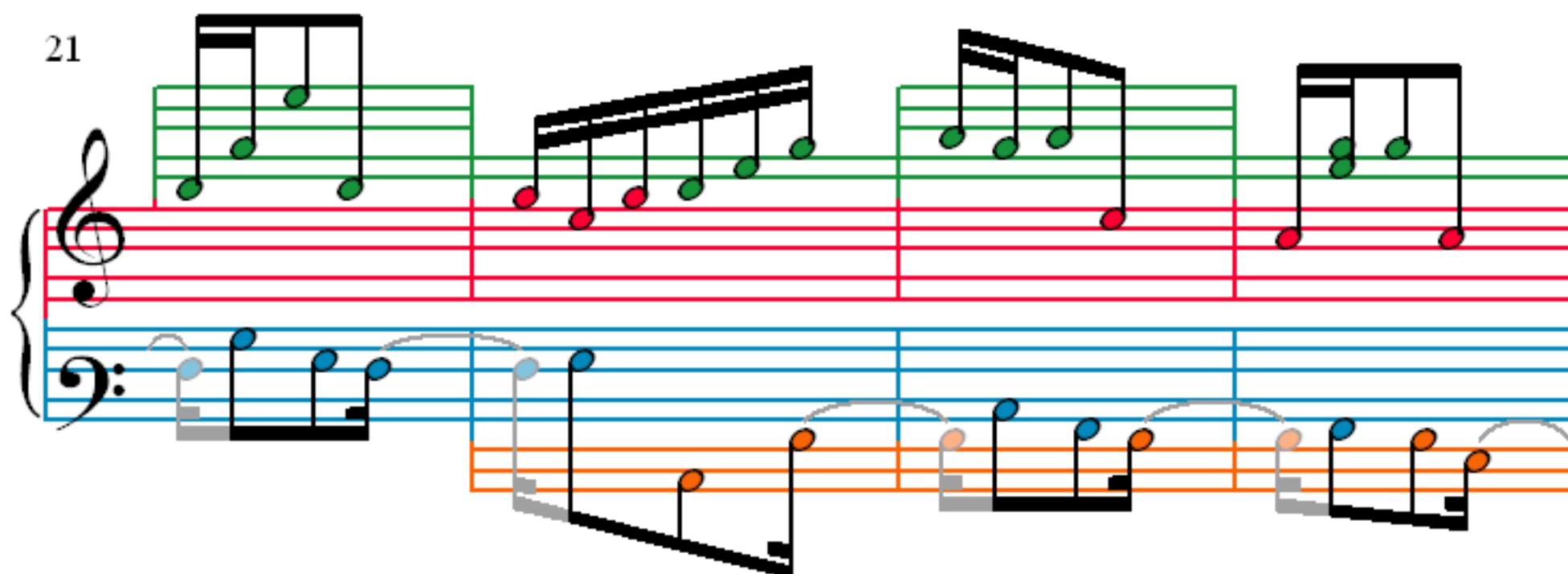
13



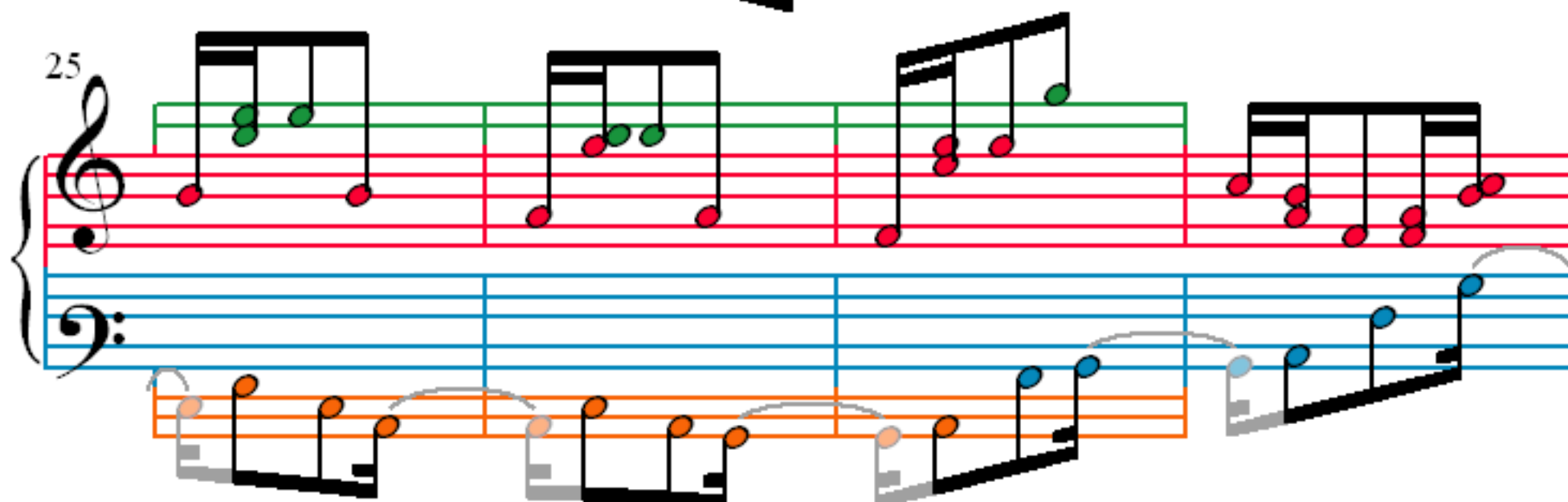
17



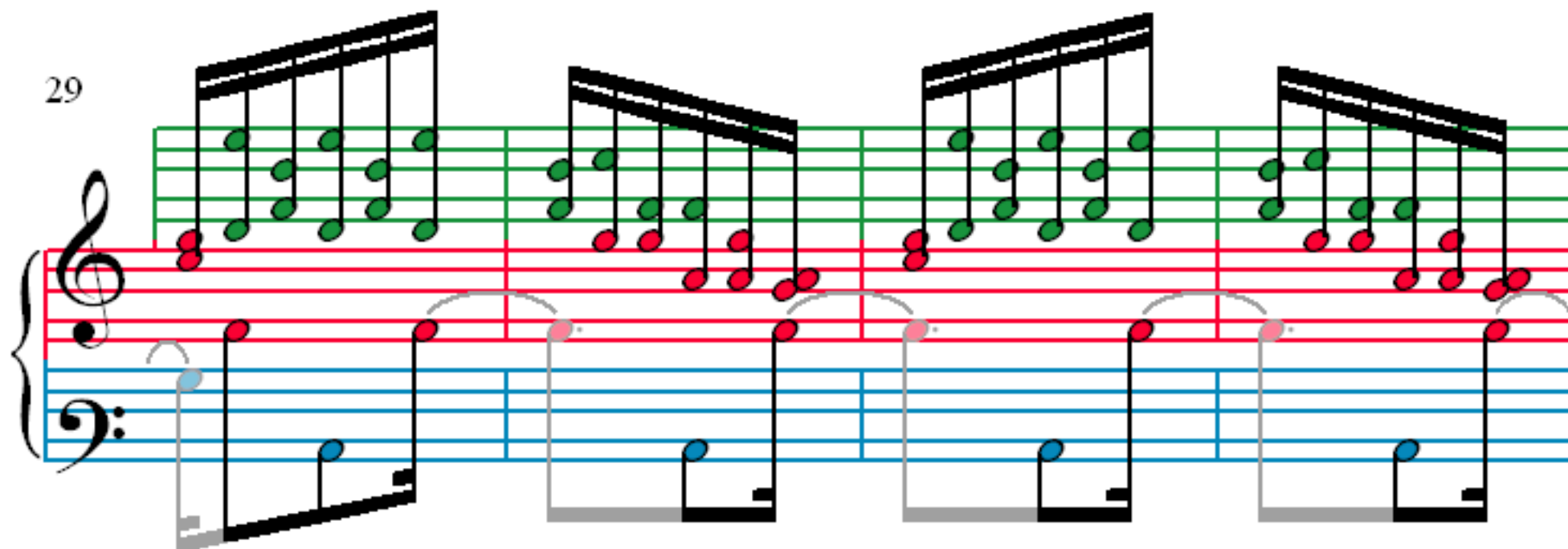
21

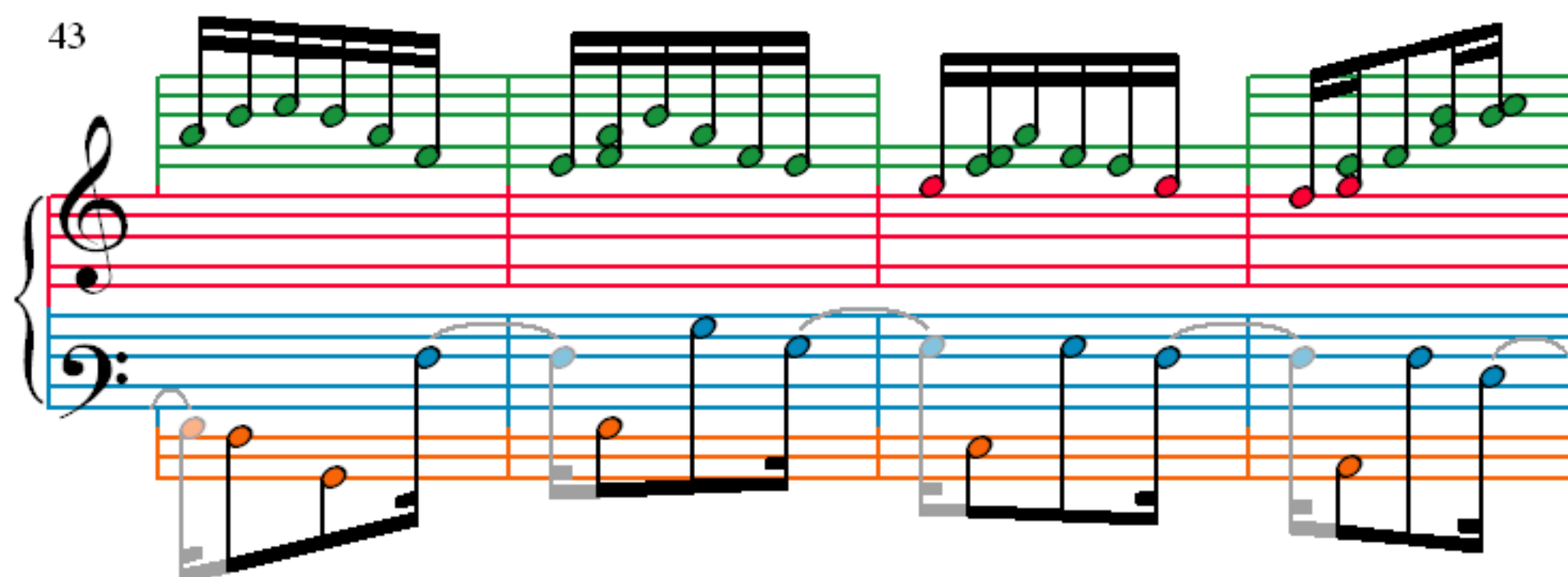
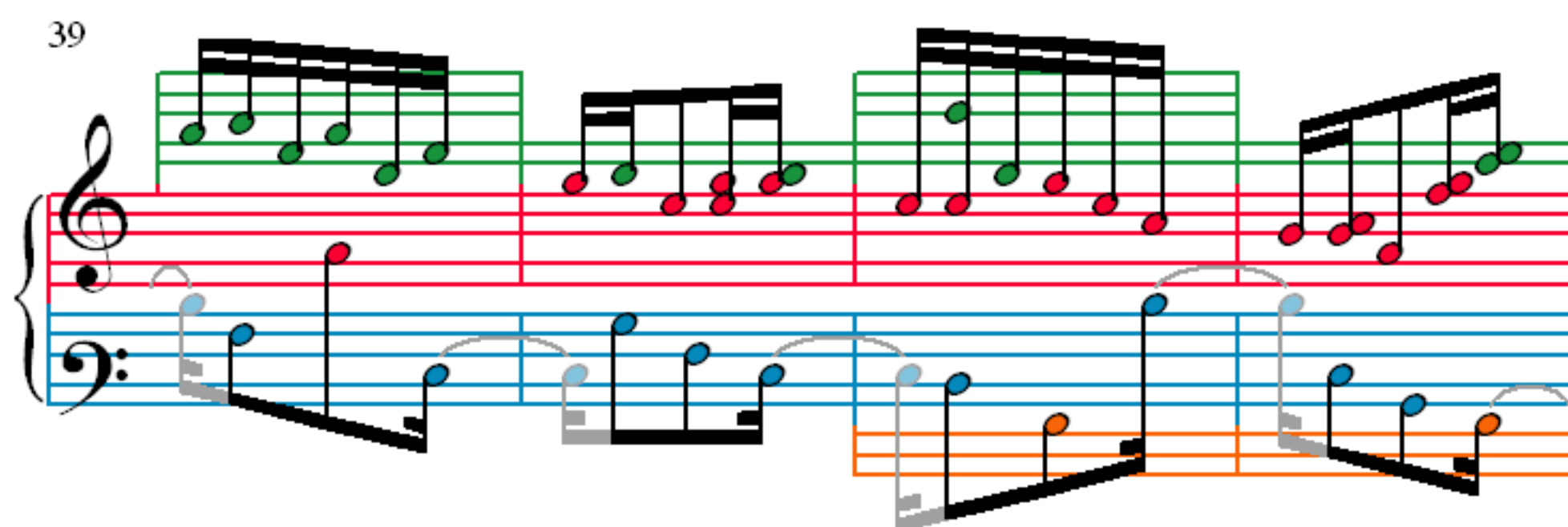
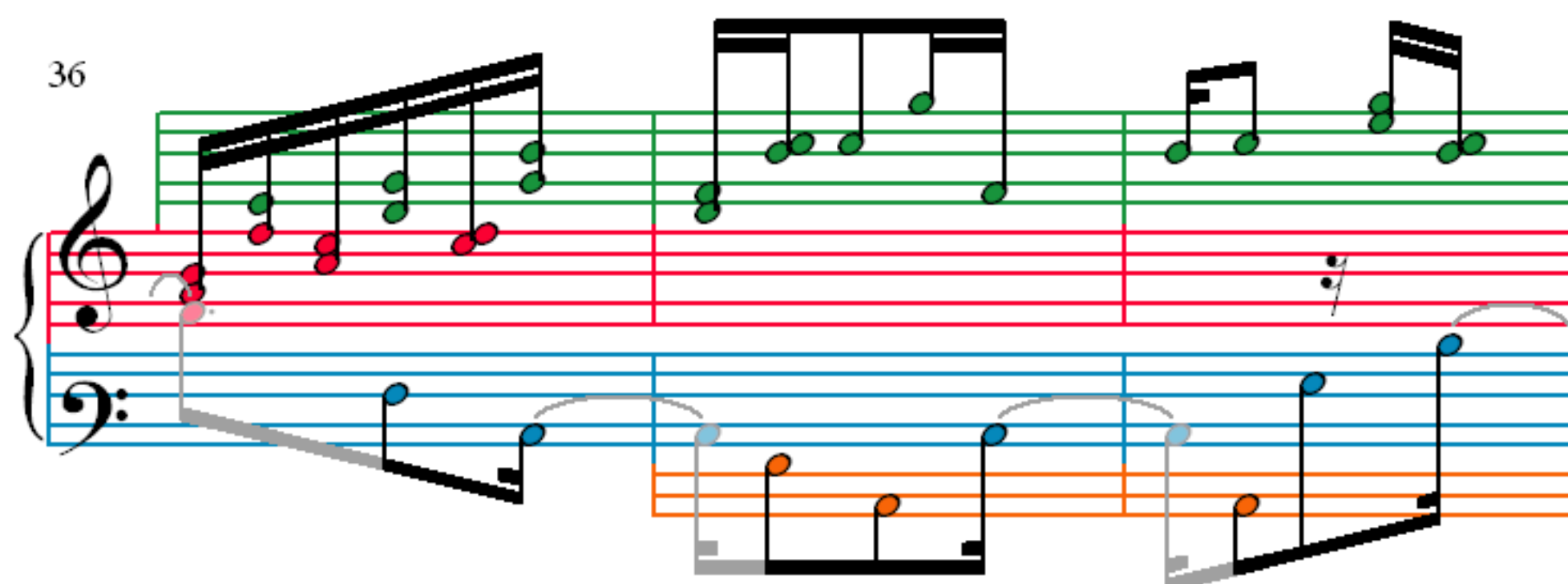
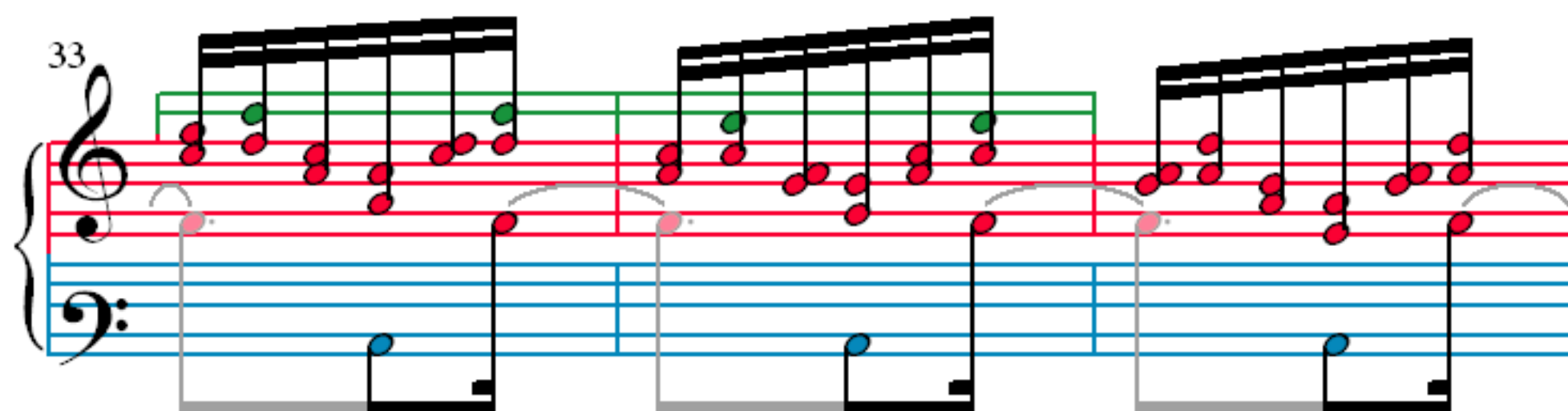


25



29





47

51

54

58

61

Measures 61-64. Treble clef: ascending eighth-note chords. Bass clef: descending eighth-note line with ties.

65

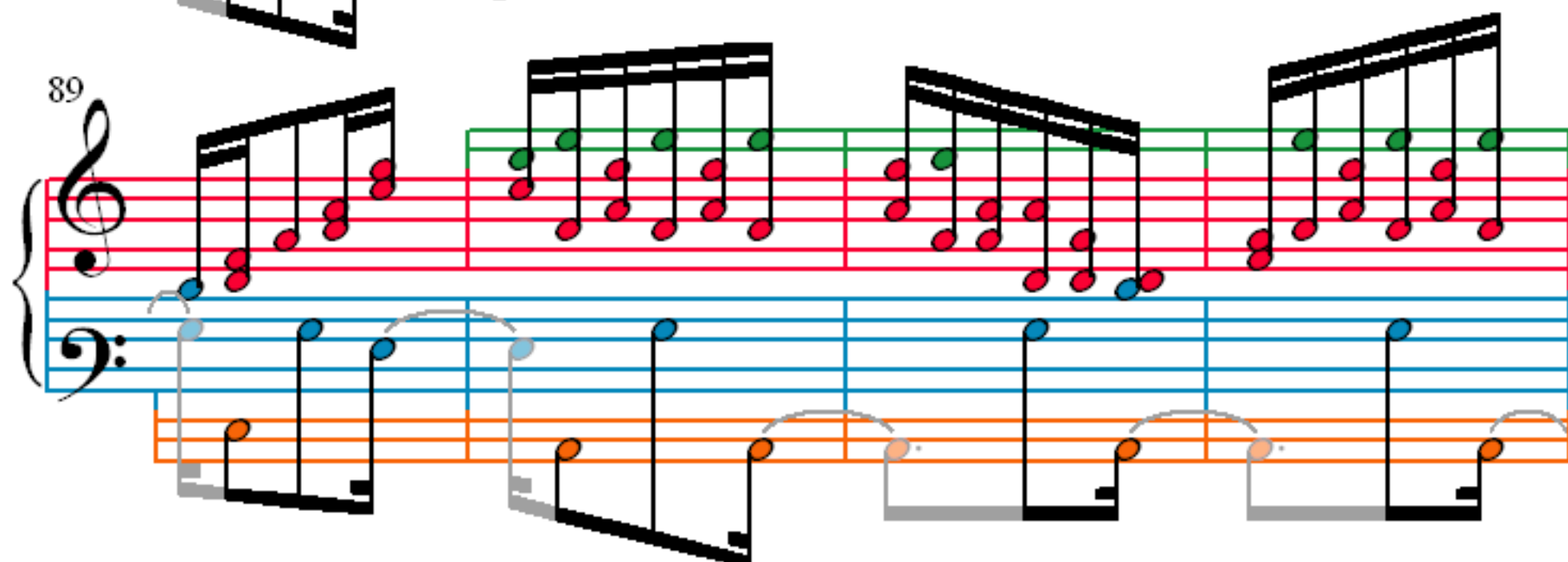
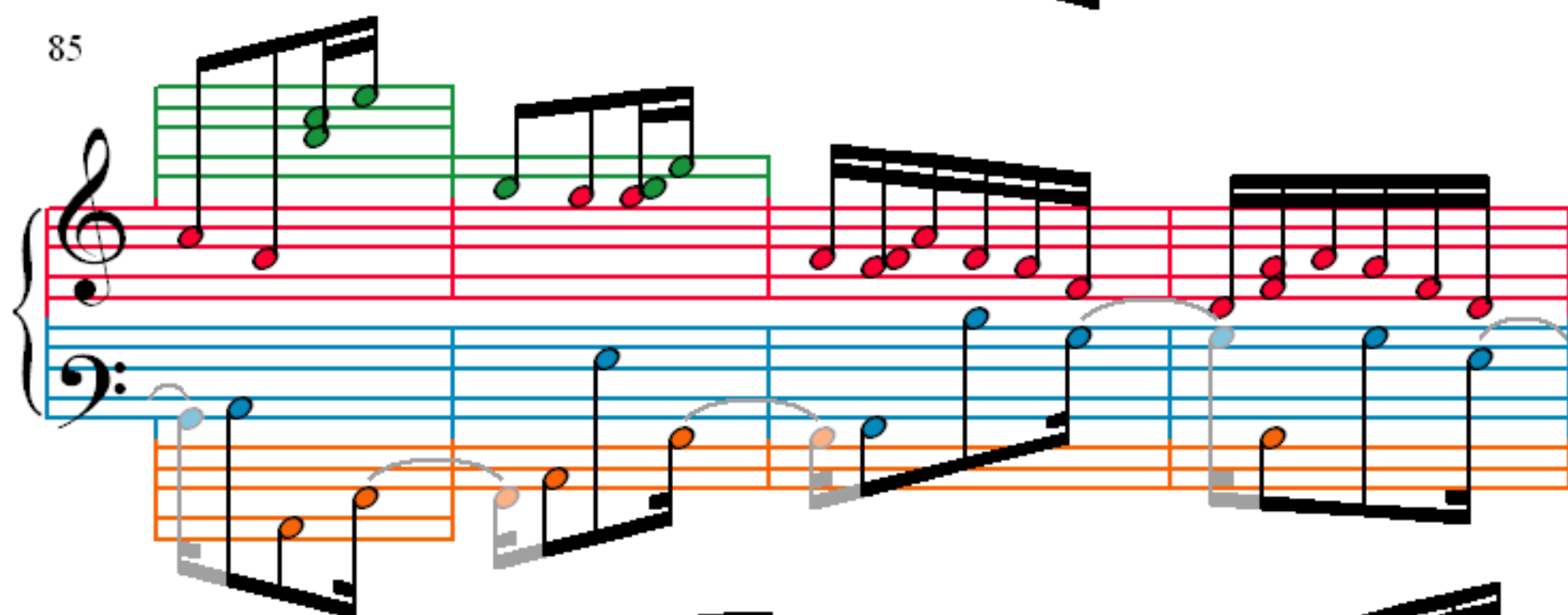
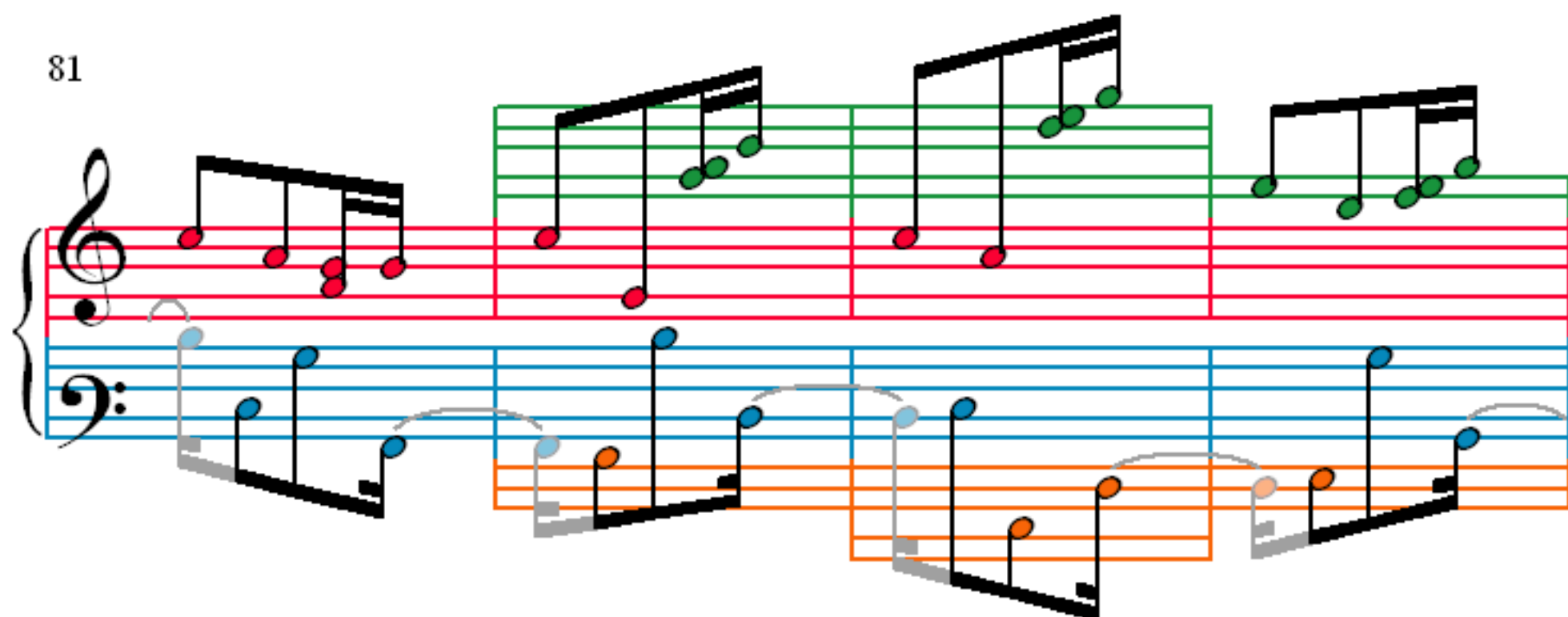
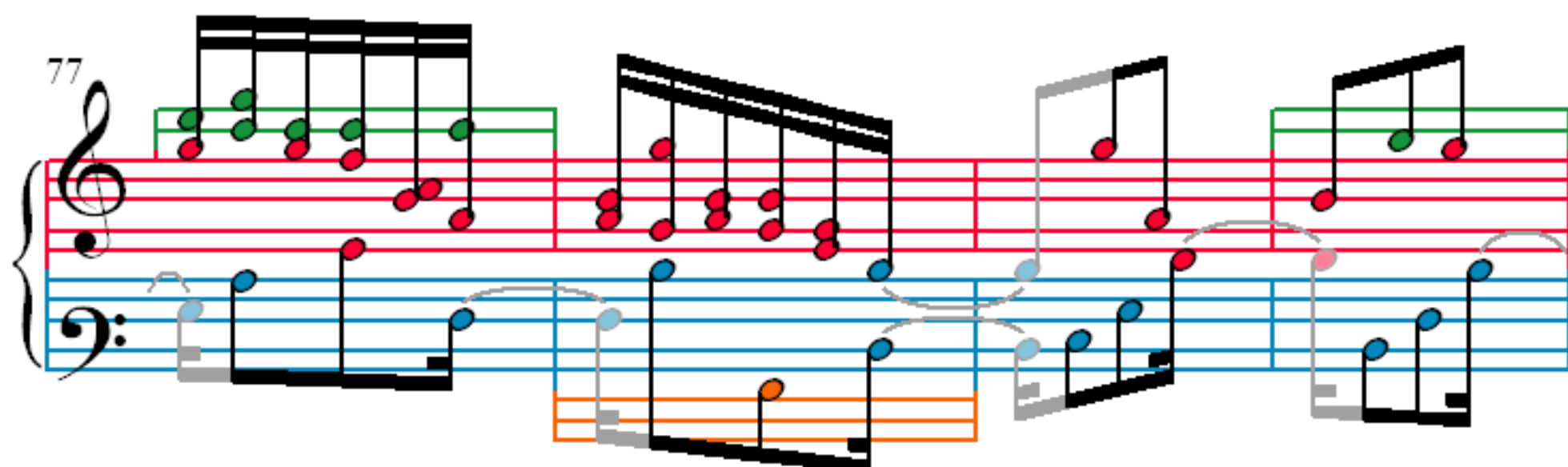
Measures 65-68. Treble clef: ascending eighth-note chords. Bass clef: descending eighth-note line with ties.

69

Measures 69-72. Treble clef: ascending eighth-note chords. Bass clef: descending eighth-note line with ties.

73

Measures 73-76. Treble clef: ascending eighth-note chords. Bass clef: descending eighth-note line with ties.



93

Measures 93-95. Treble clef has a green box over measures 93-94. Bass clef has an orange box over measures 93-94 and a grey box over measure 95. Notes are colored red, blue, and orange.

96

Measures 96-99. Treble clef has a green box over measures 97-98. Bass clef has an orange box over measures 96-97 and a grey box over measures 98-99. Notes are colored red, blue, and orange.

100

Measures 100-102. Treble clef has a green box over measures 101-102. Bass clef has a grey box over measures 100-101 and a blue box over measure 102. Notes are colored red, blue, and green.

103

Measures 103-105. Treble clef has a green box over measures 104-105. Bass clef has a grey box over measures 103-104 and a blue box over measure 105. Notes are colored red, blue, and green.

106

109

111

114