

Keyboard partita in E minor

BWV-830-7

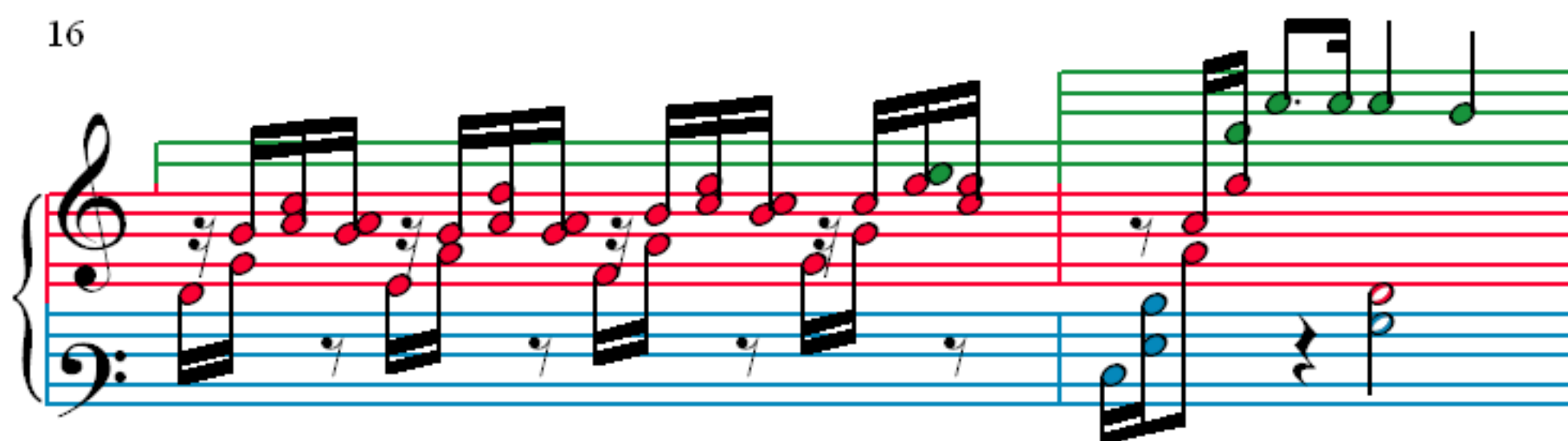
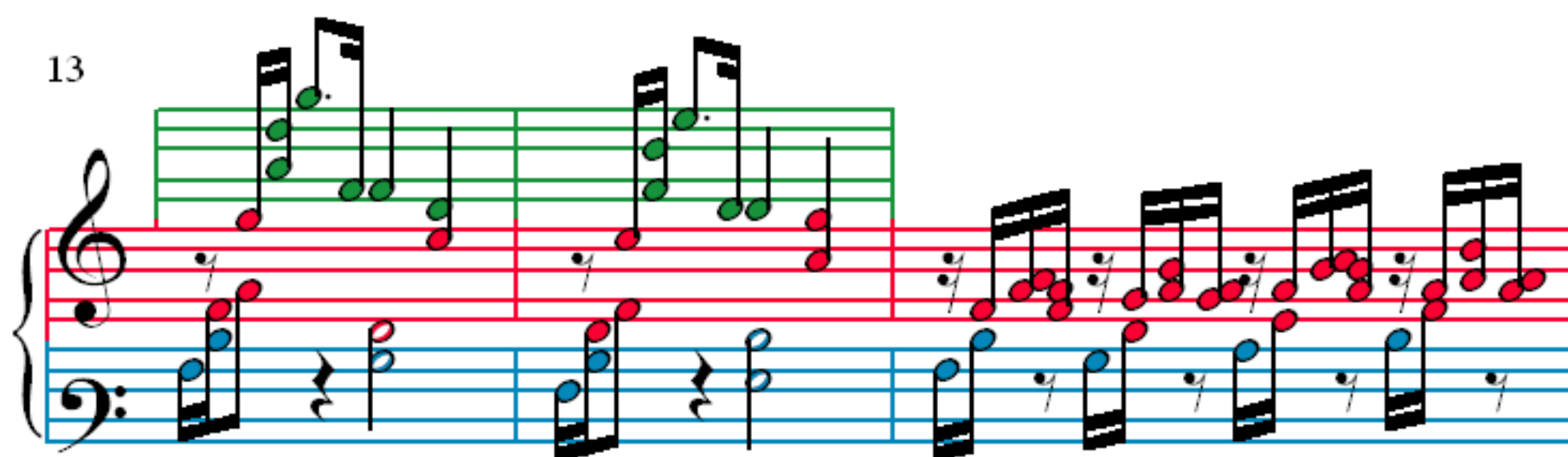
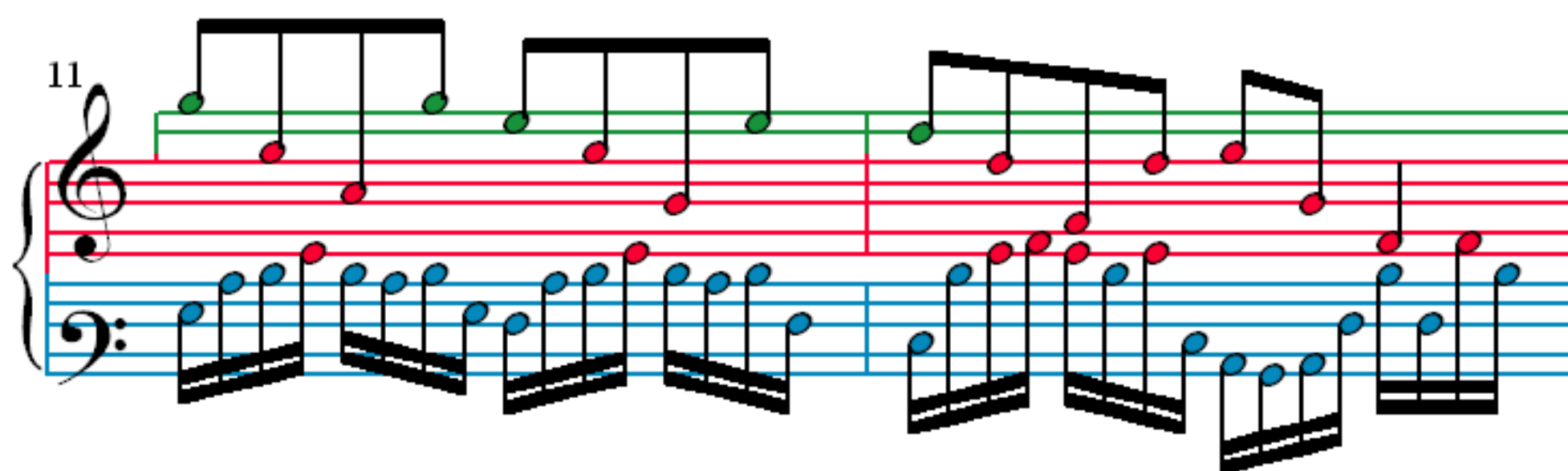
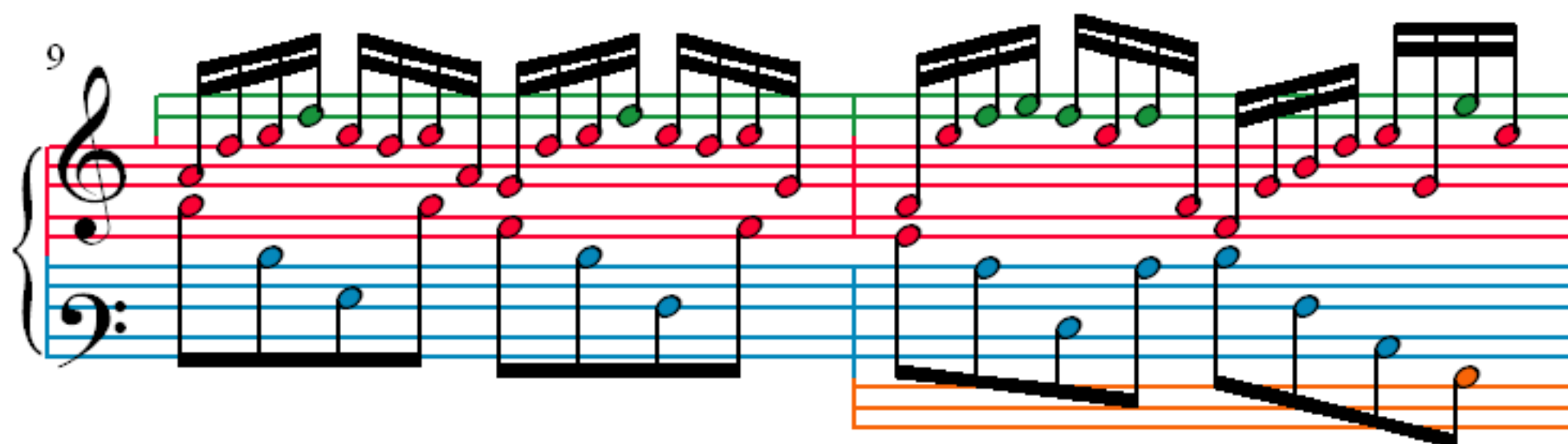
J. S. Bach (1685–1750)

1

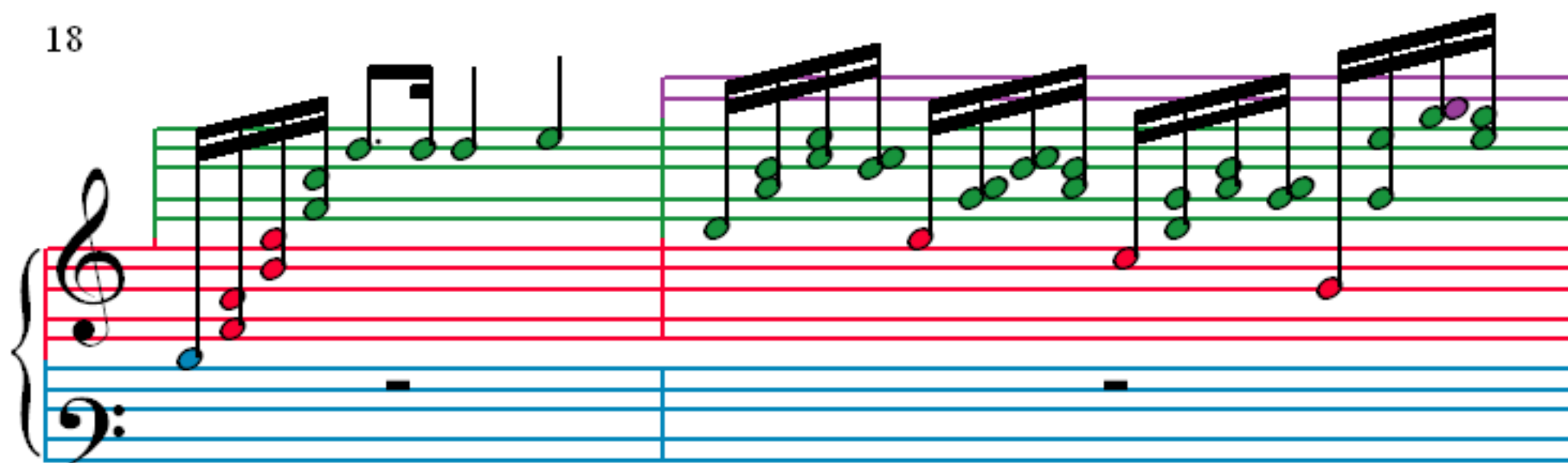
3

5

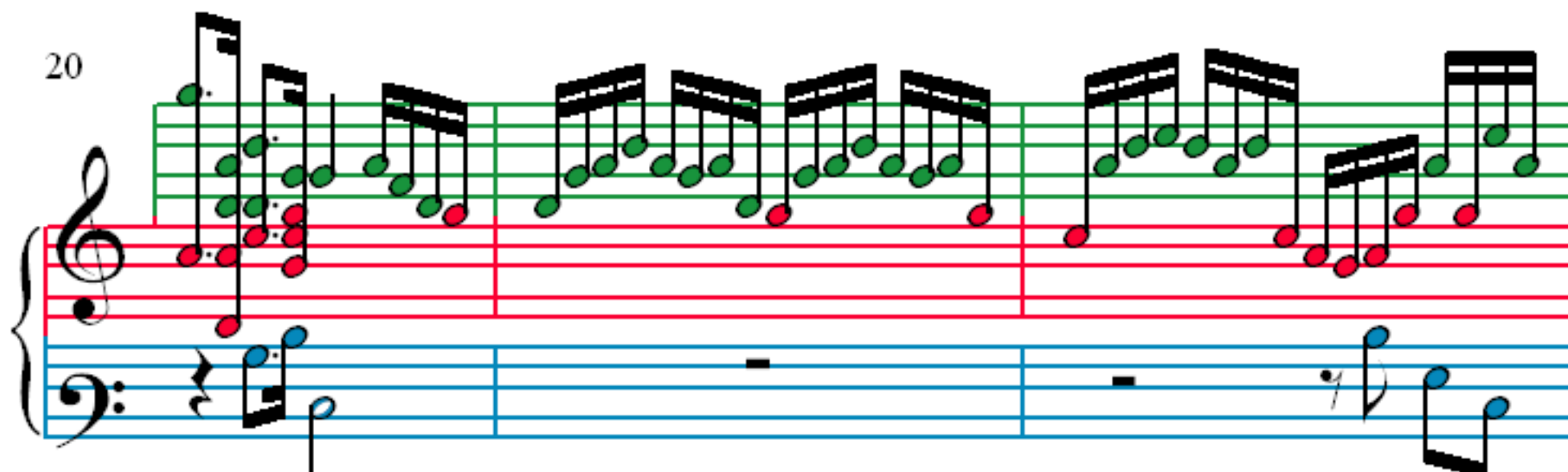
7



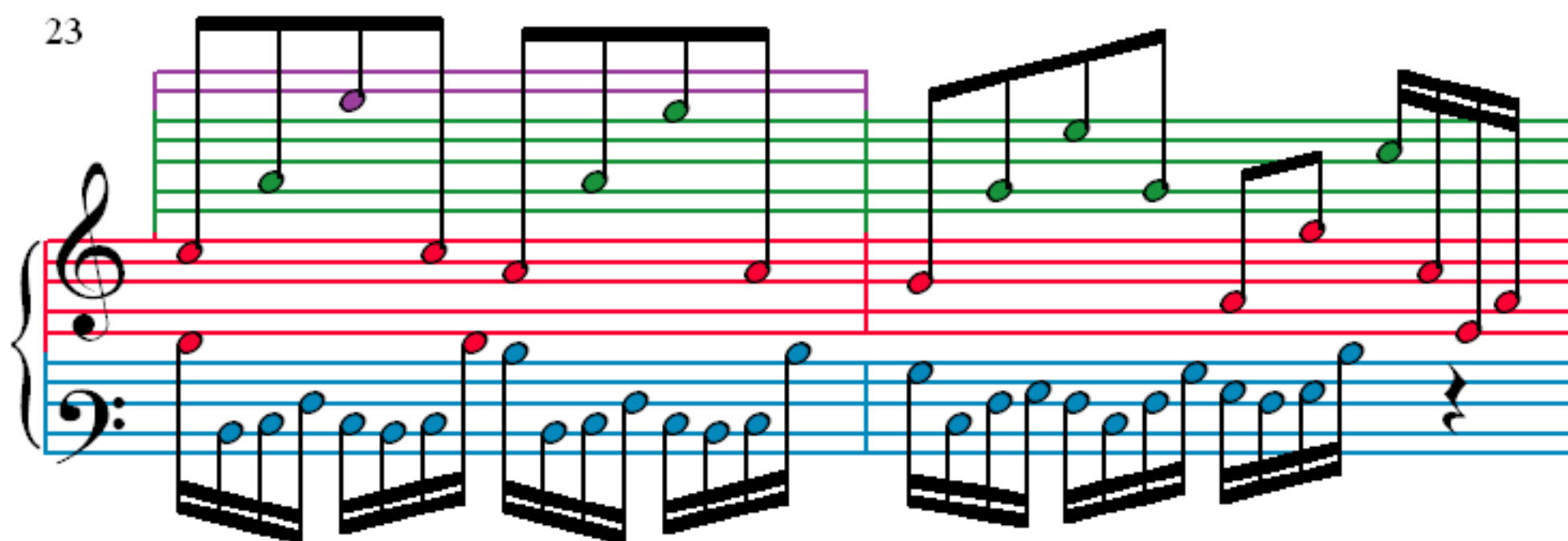
18



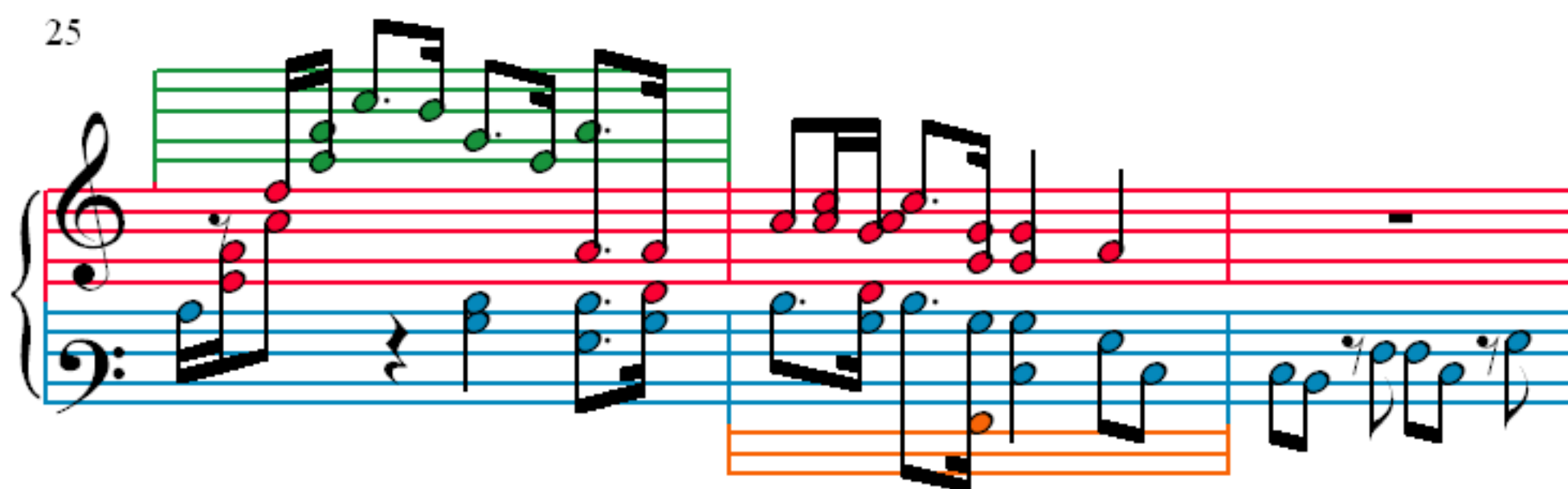
20



23



25

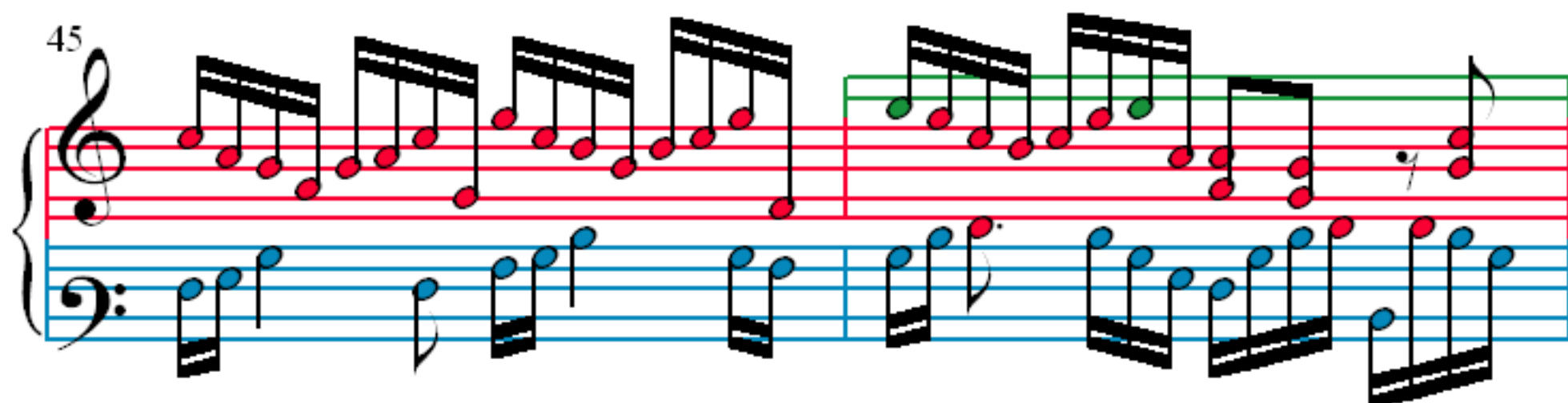
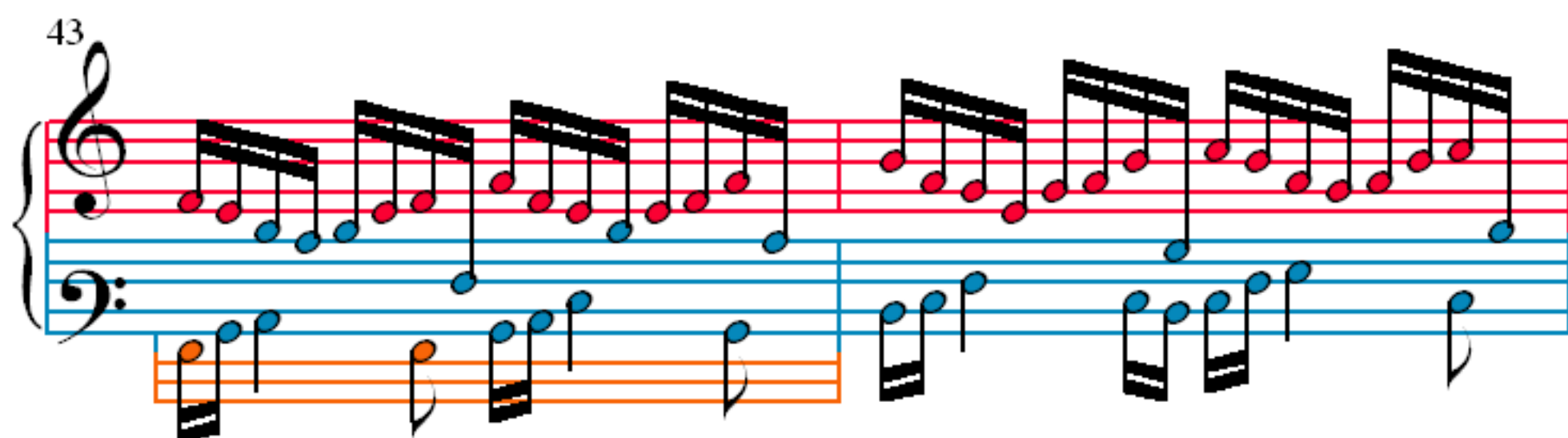
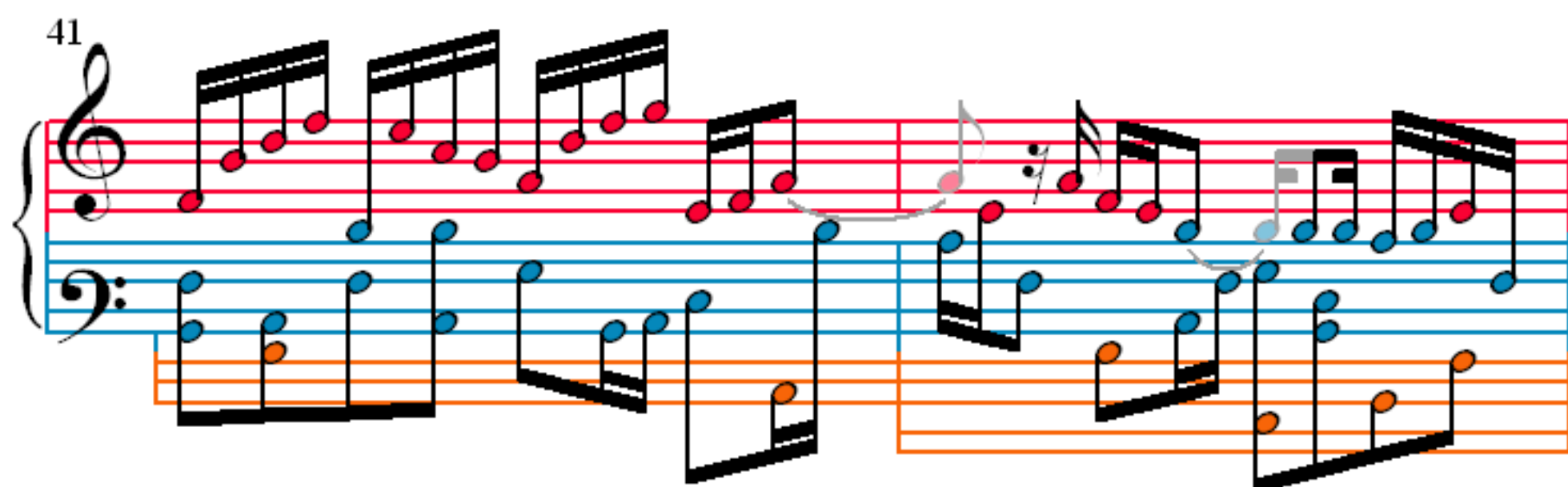
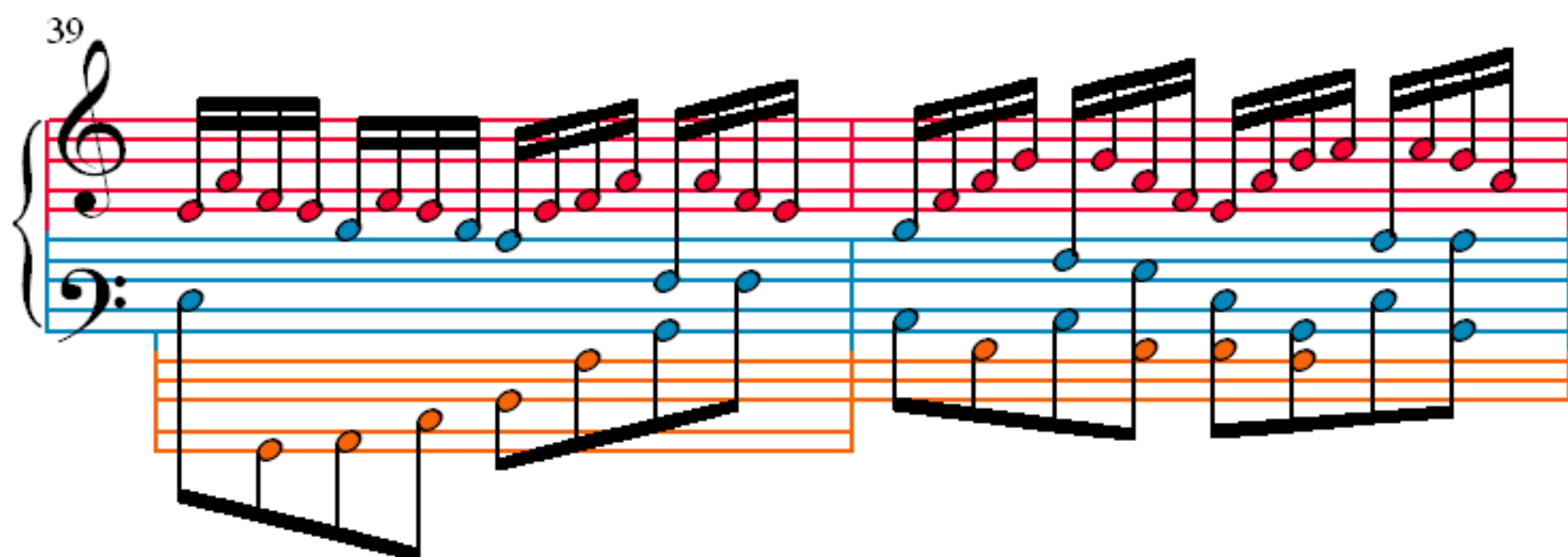


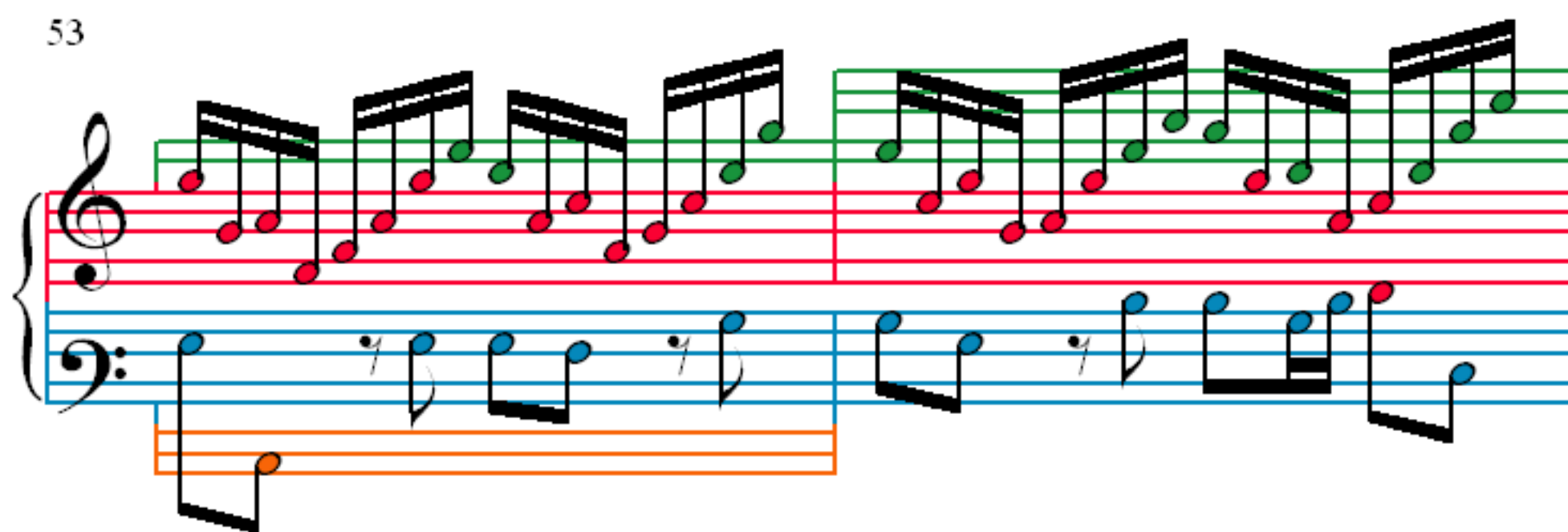
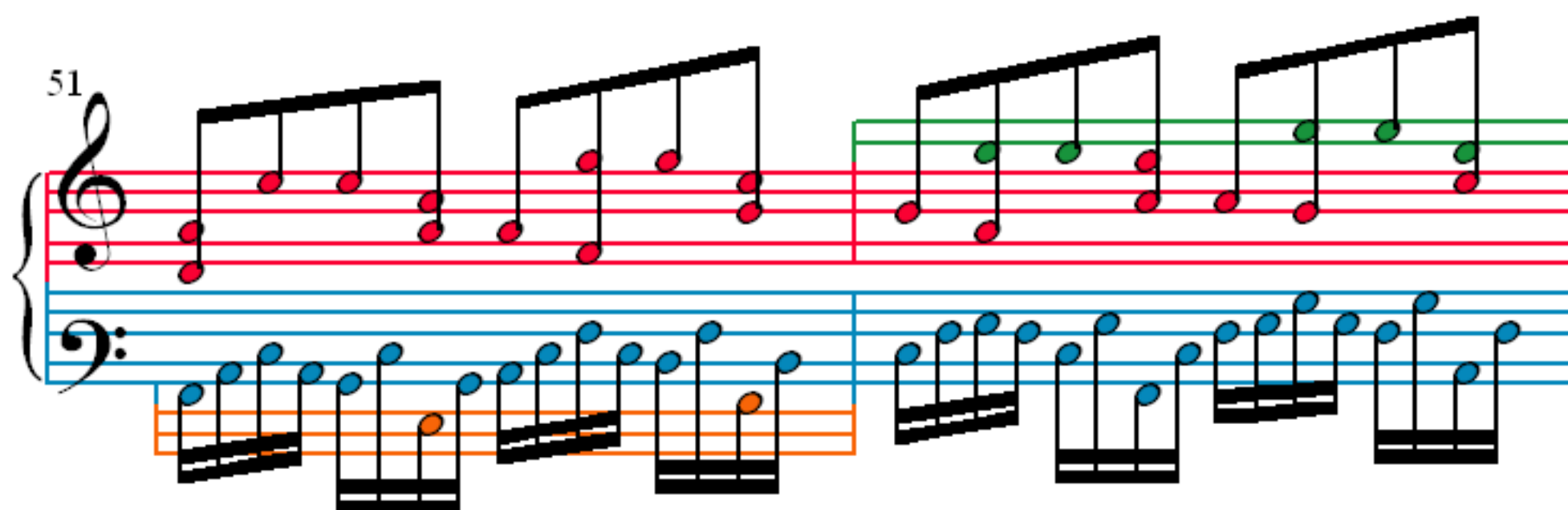
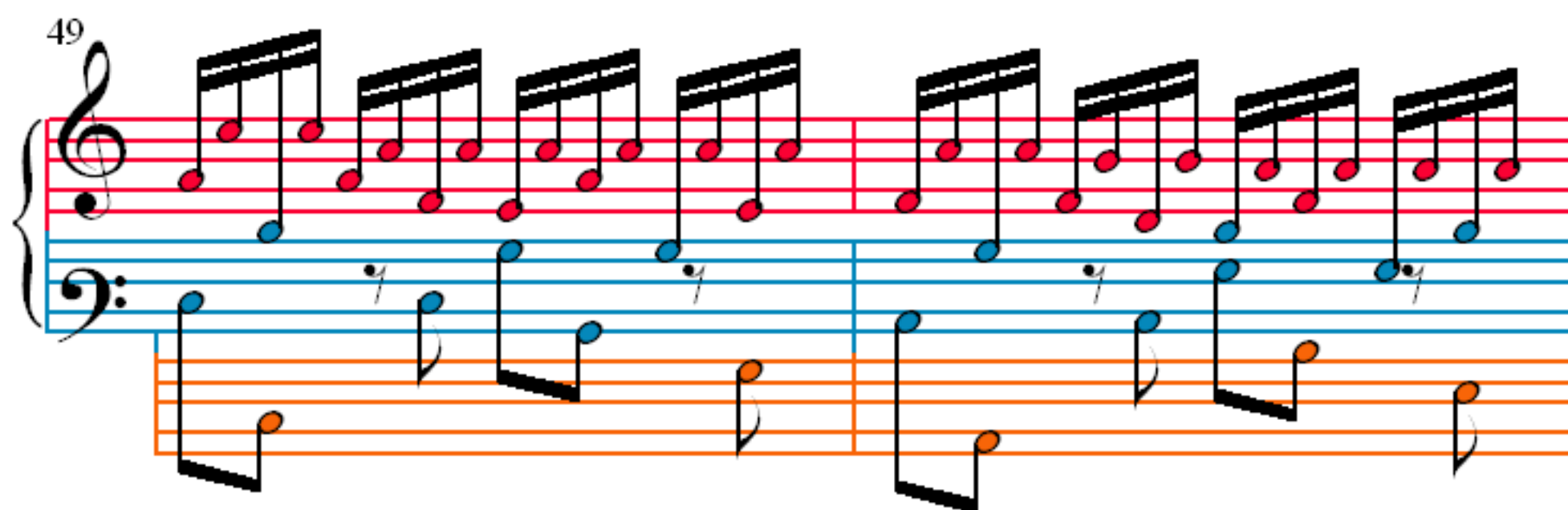
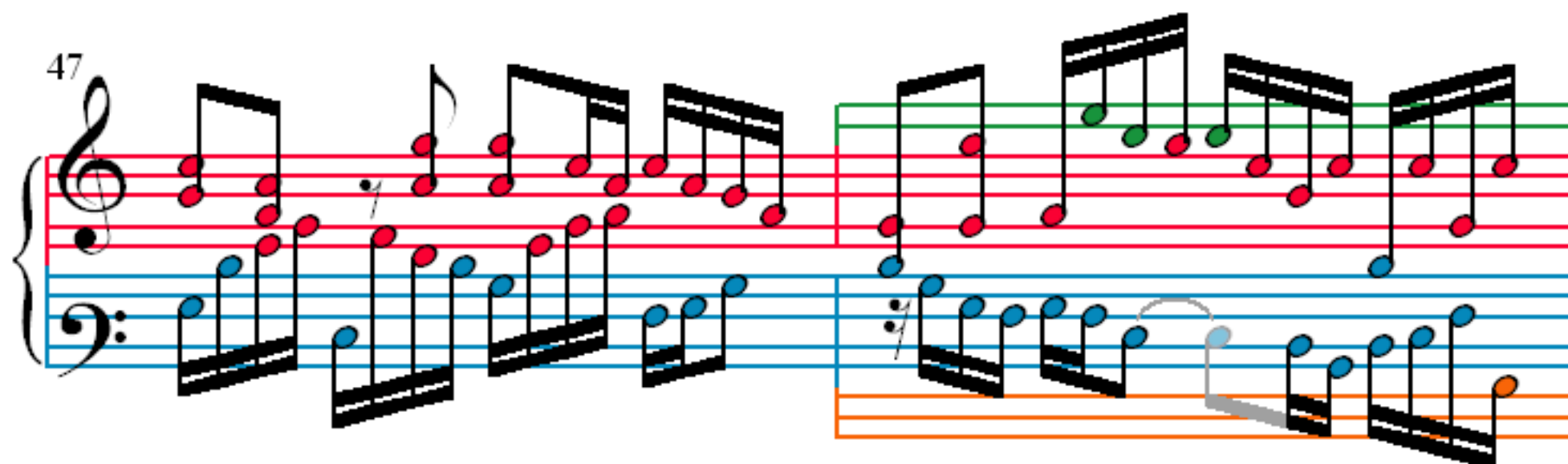
28

31

34

36





55

57

59

61

63

Measures 63 and 64 of a keyboard partita in E minor. The treble clef contains a sequence of eighth notes, with green notes in measures 63 and 64, and red notes in measure 64. The bass clef contains a sequence of eighth notes, with blue notes in measures 63 and 64, and red notes in measure 64. A grey note is present in the treble clef in measure 64.

65

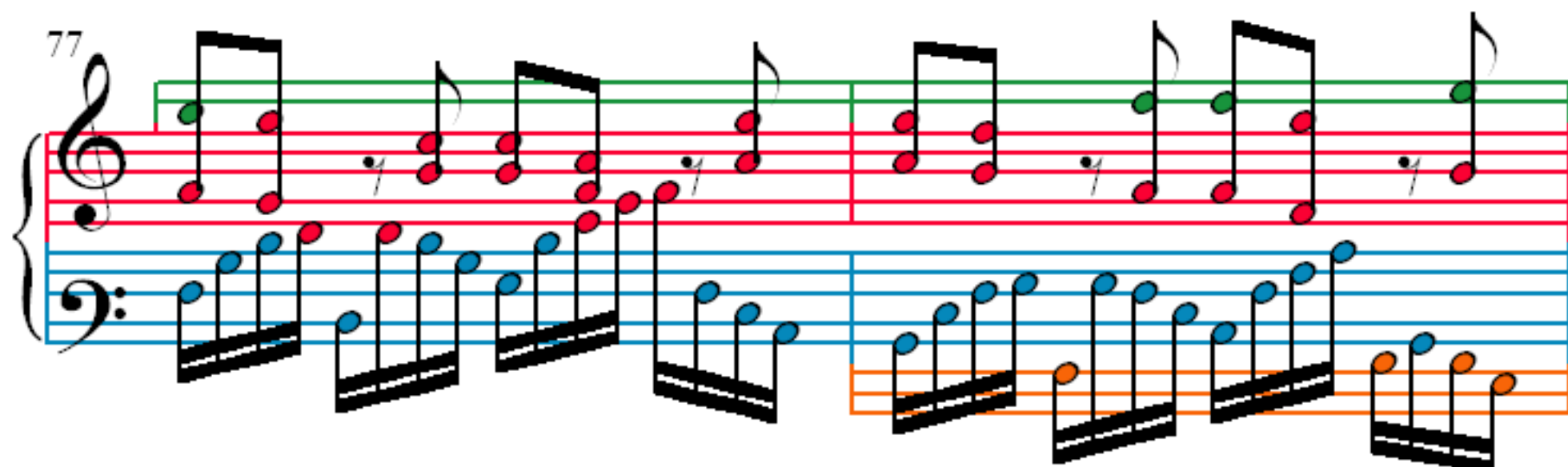
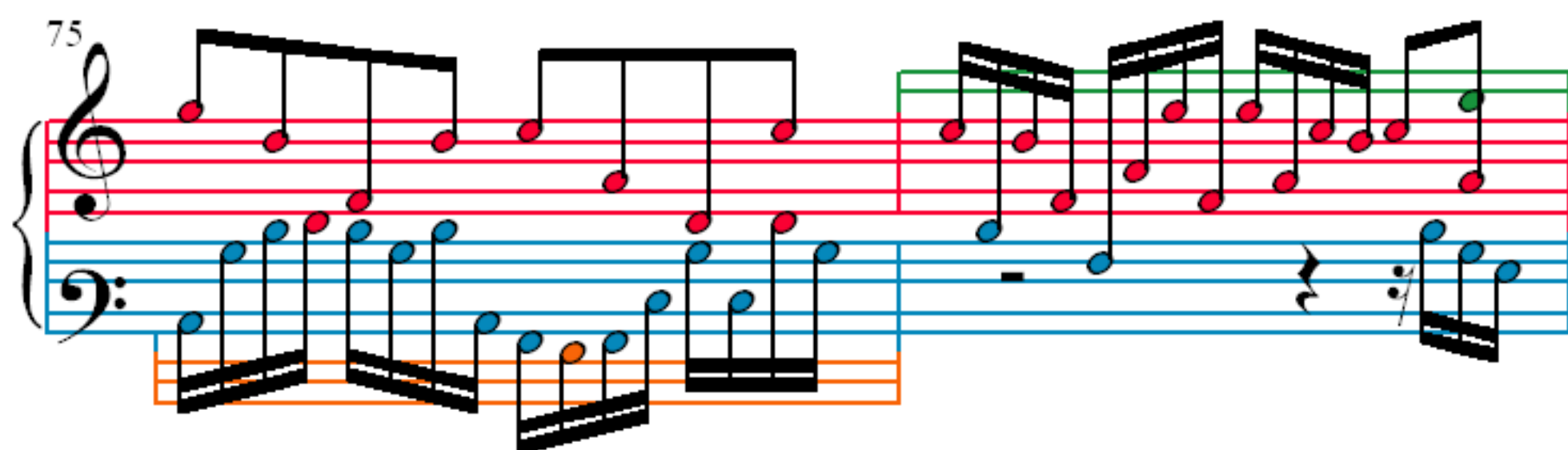
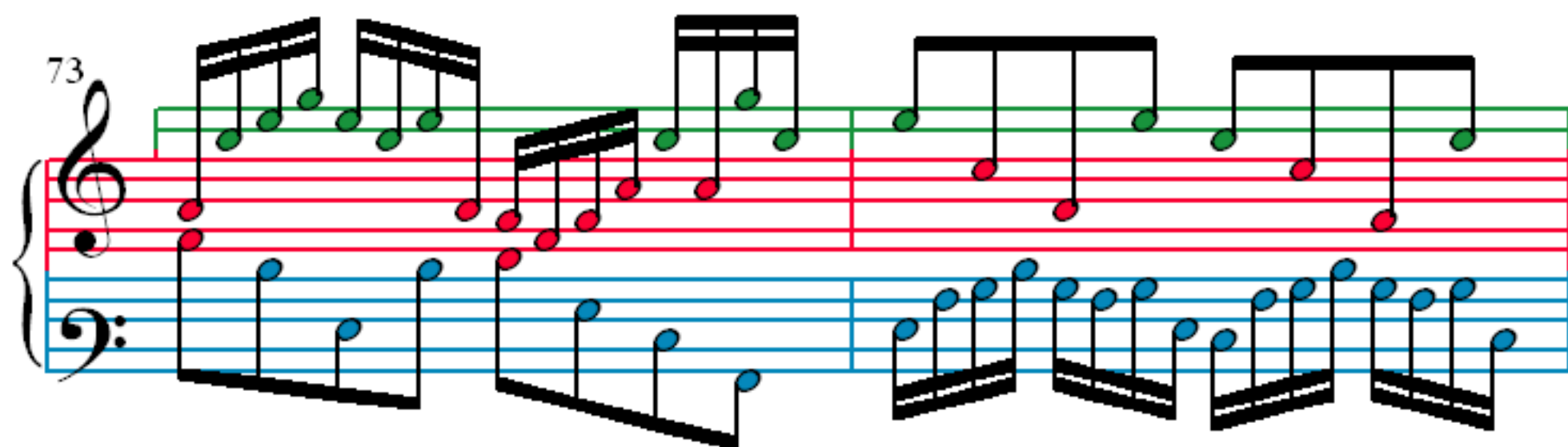
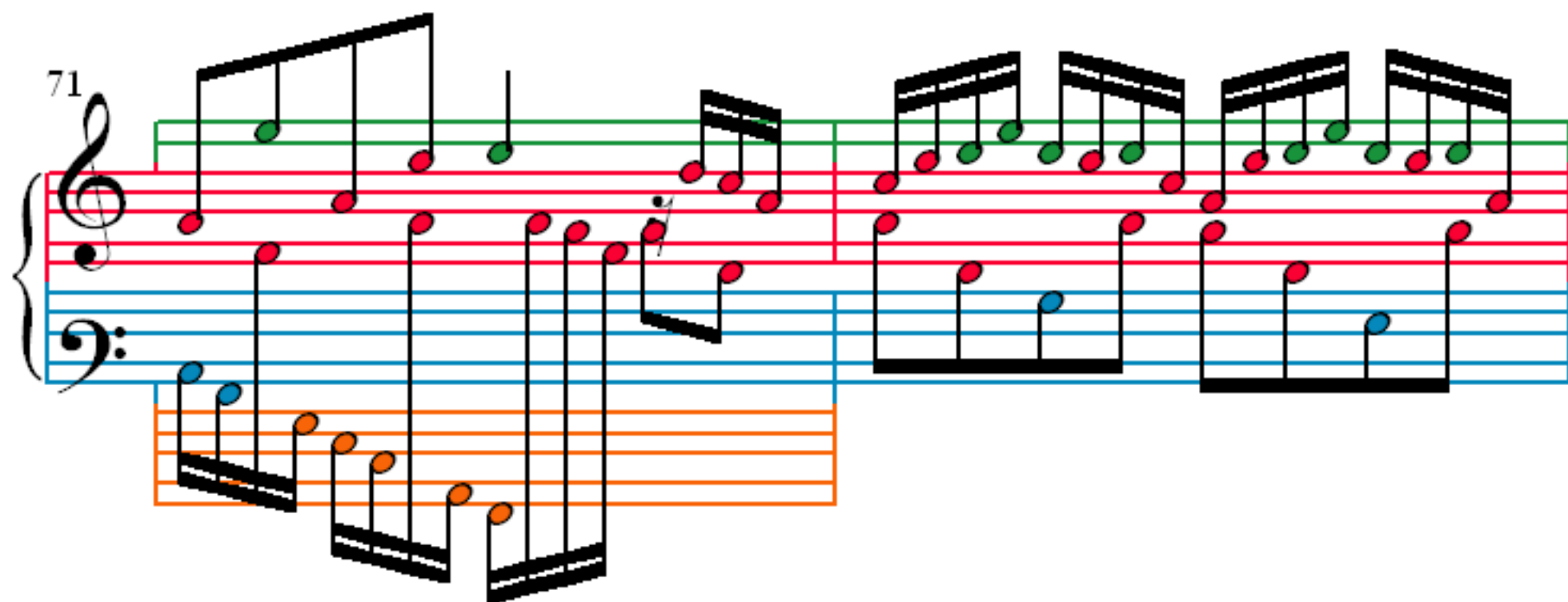
Measures 65 and 66 of a keyboard partita in E minor. The treble clef contains a sequence of eighth notes, with green notes in measures 65 and 66, and red notes in measure 66. The bass clef contains a sequence of eighth notes, with blue notes in measures 65 and 66, and red notes in measure 66. A grey note is present in the treble clef in measure 66.

67

Measures 67 and 68 of a keyboard partita in E minor. The treble clef contains a sequence of eighth notes, with green notes in measures 67 and 68, and red notes in measure 68. The bass clef contains a sequence of eighth notes, with blue notes in measures 67 and 68, and red notes in measure 68. A grey note is present in the treble clef in measure 68.

69

Measures 69 and 70 of a keyboard partita in E minor. The treble clef contains a sequence of eighth notes, with green notes in measures 69 and 70, and red notes in measure 70. The bass clef contains a sequence of eighth notes, with blue notes in measures 69 and 70, and red notes in measure 70. A grey note is present in the treble clef in measure 70.



79

81

83

85

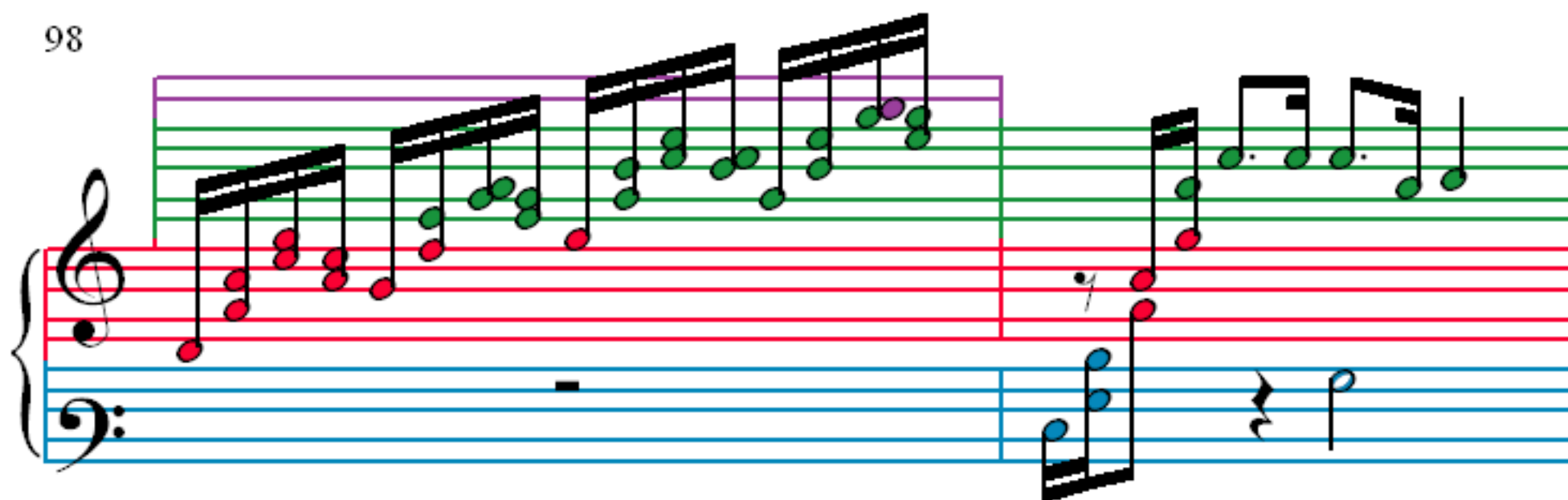
87

90

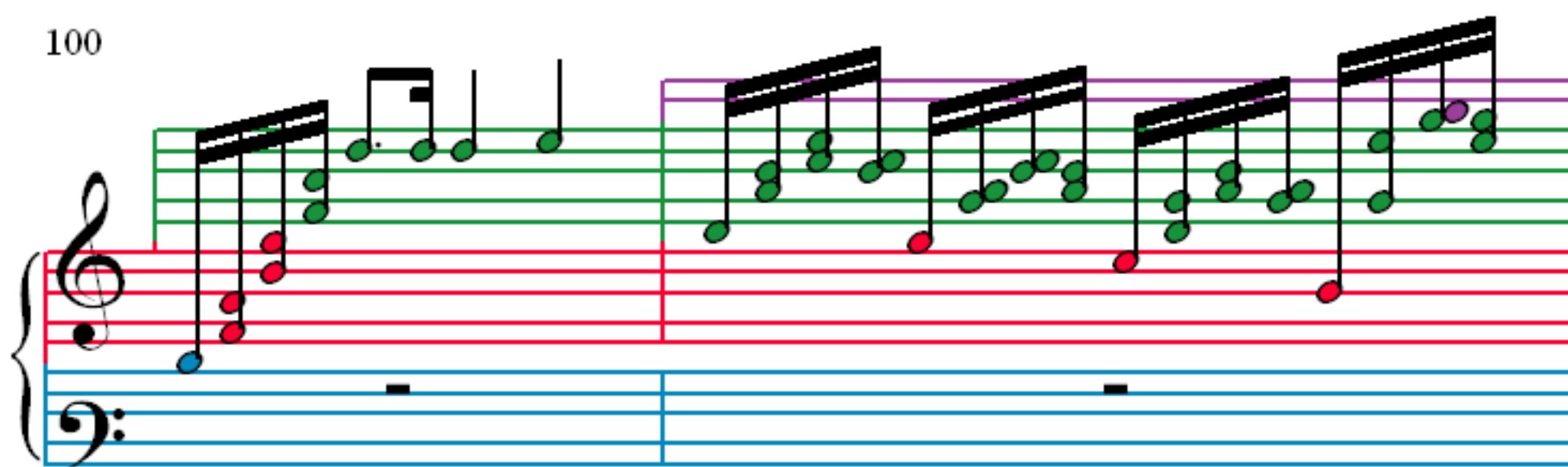
93

95

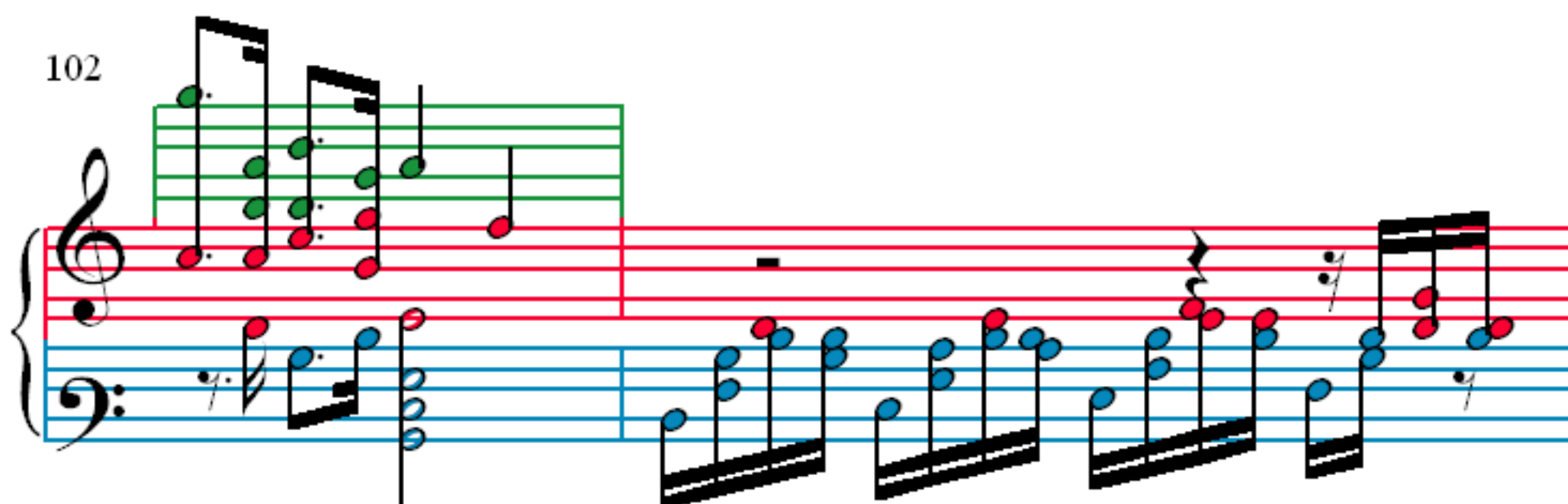
98



100



102



104

