

J. S. Bach (1685–1750)

10

The image shows a musical score for the song 'The Rose Tree'. It consists of two staves: a treble staff (top) and a bass staff (bottom). The treble staff has a key signature of one sharp (F#) and a common time signature (C). The melody is written in red notes. The bass staff has a key signature of one sharp (F#) and a common time signature (C). The bass line is written in blue notes. The score is divided into three measures. The first measure shows the beginning of the melody and bass line. The second measure shows the continuation of the melody and bass line. The third measure shows the end of the melody and bass line, with a final double bar line.

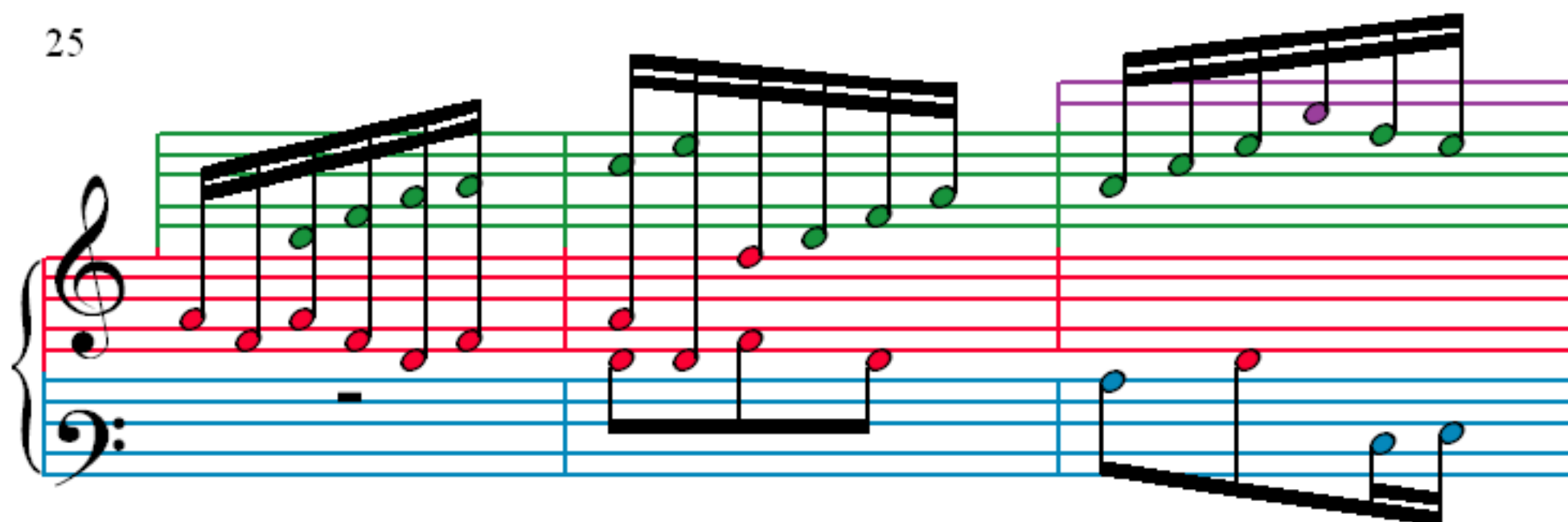
13

16

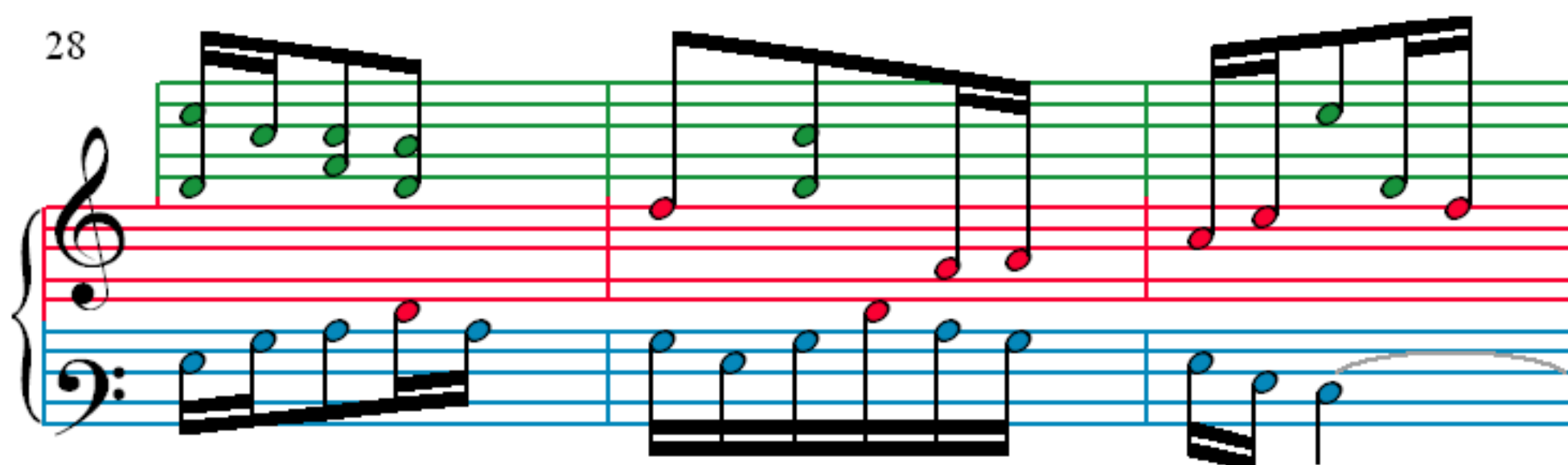
19

22

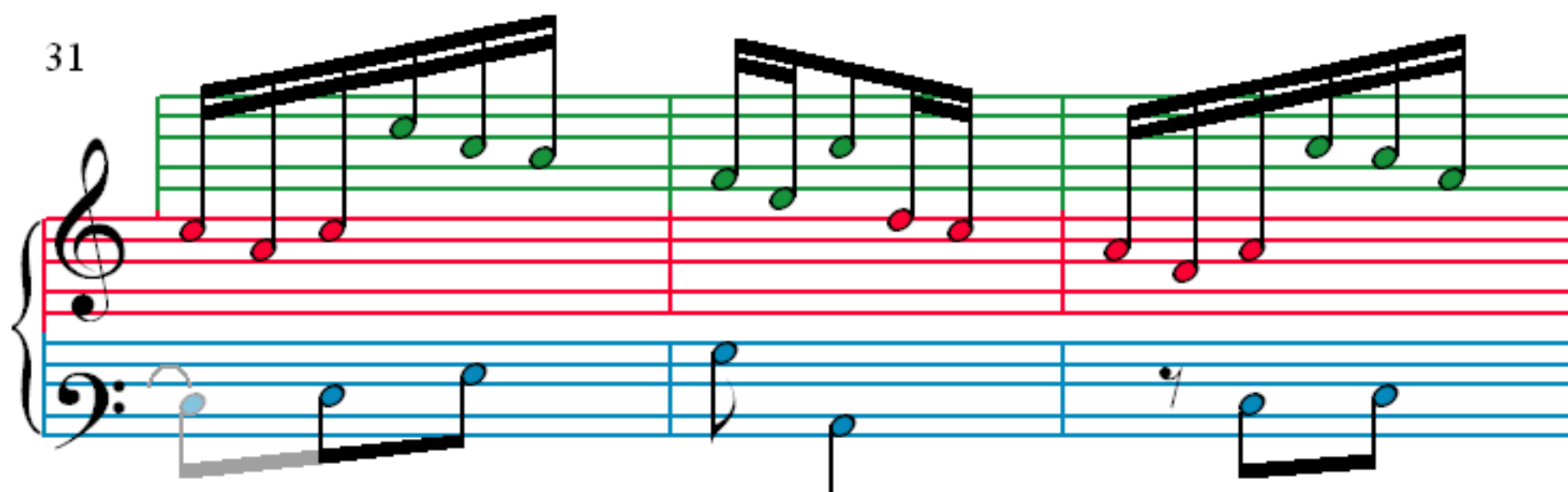
25



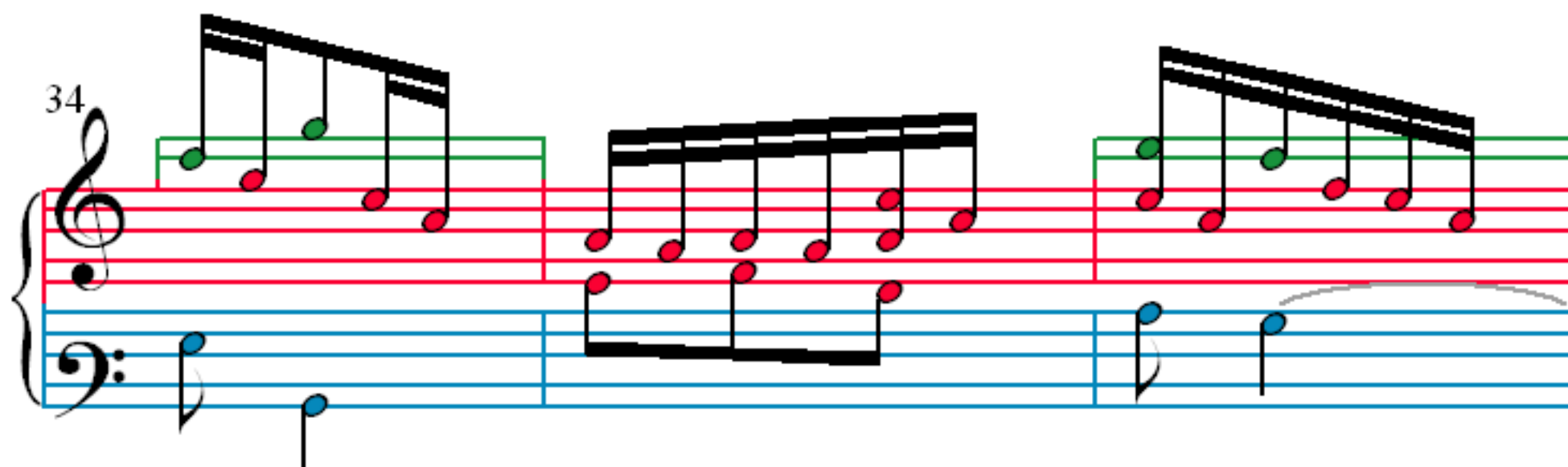
28



31



34

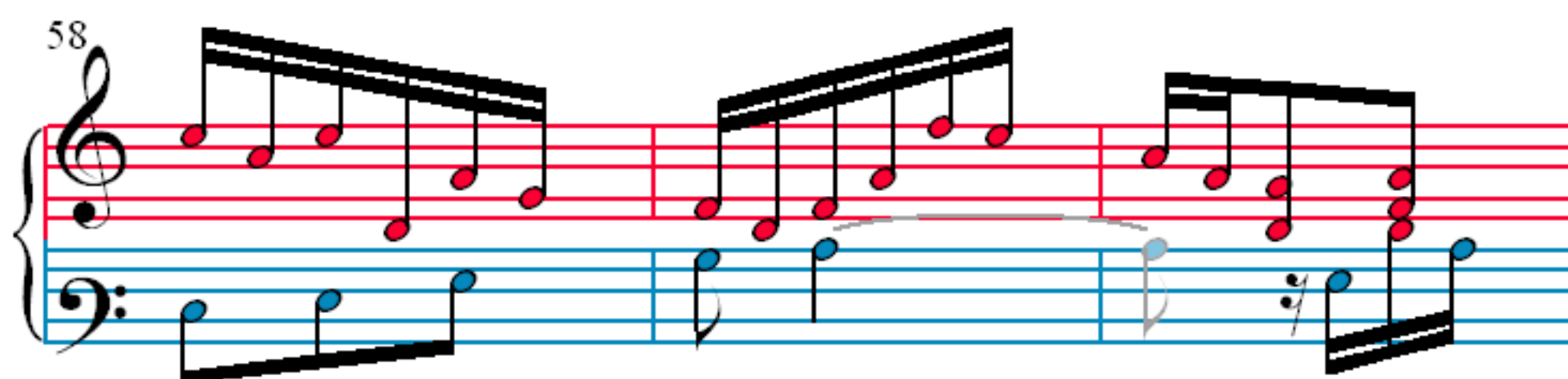
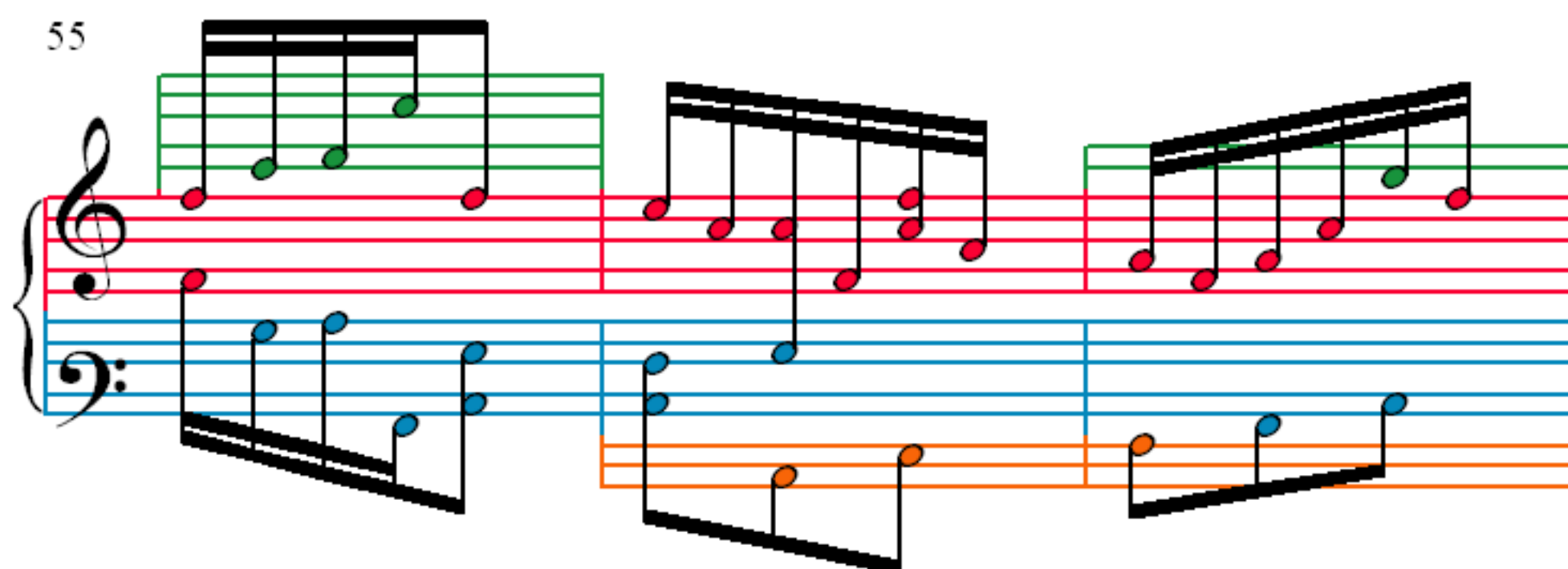
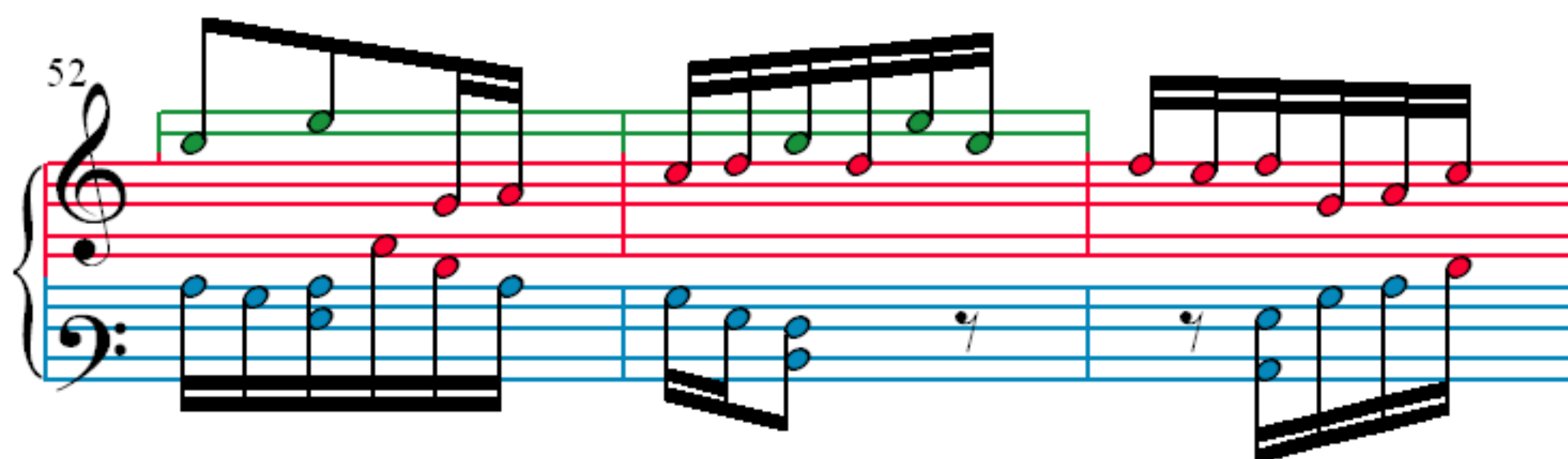
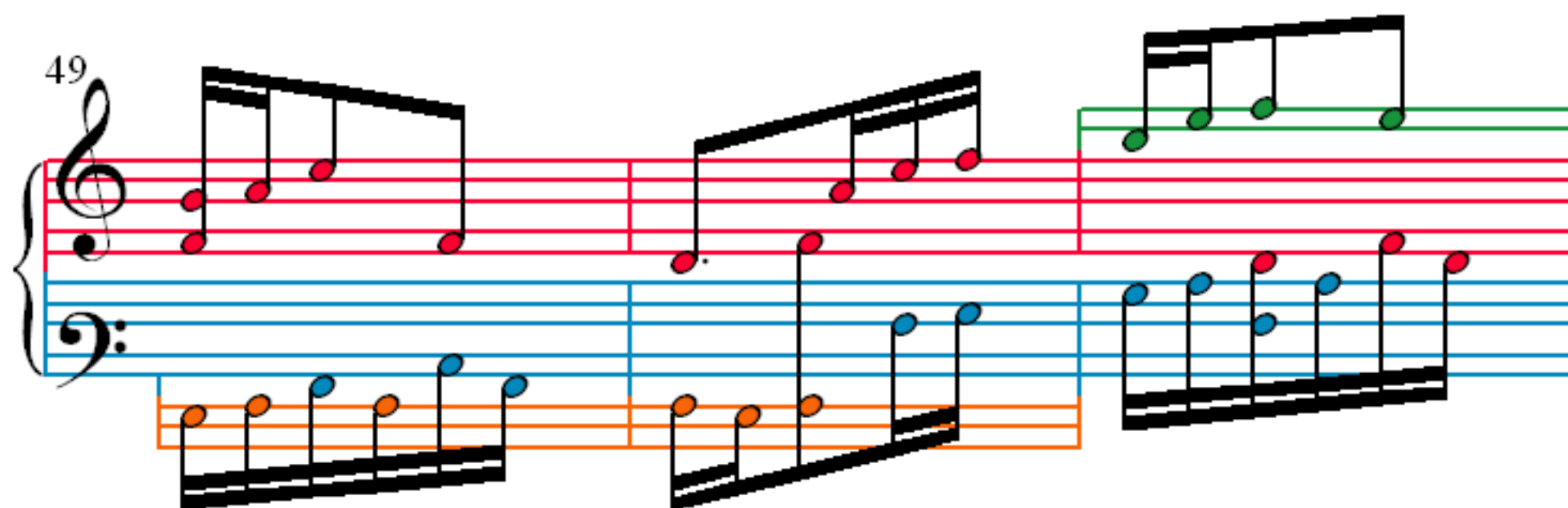


37

40

43

46



61

64

67

70

71