

Das Wohltemperierte Clavier I, Fuga XVI

BWV 861

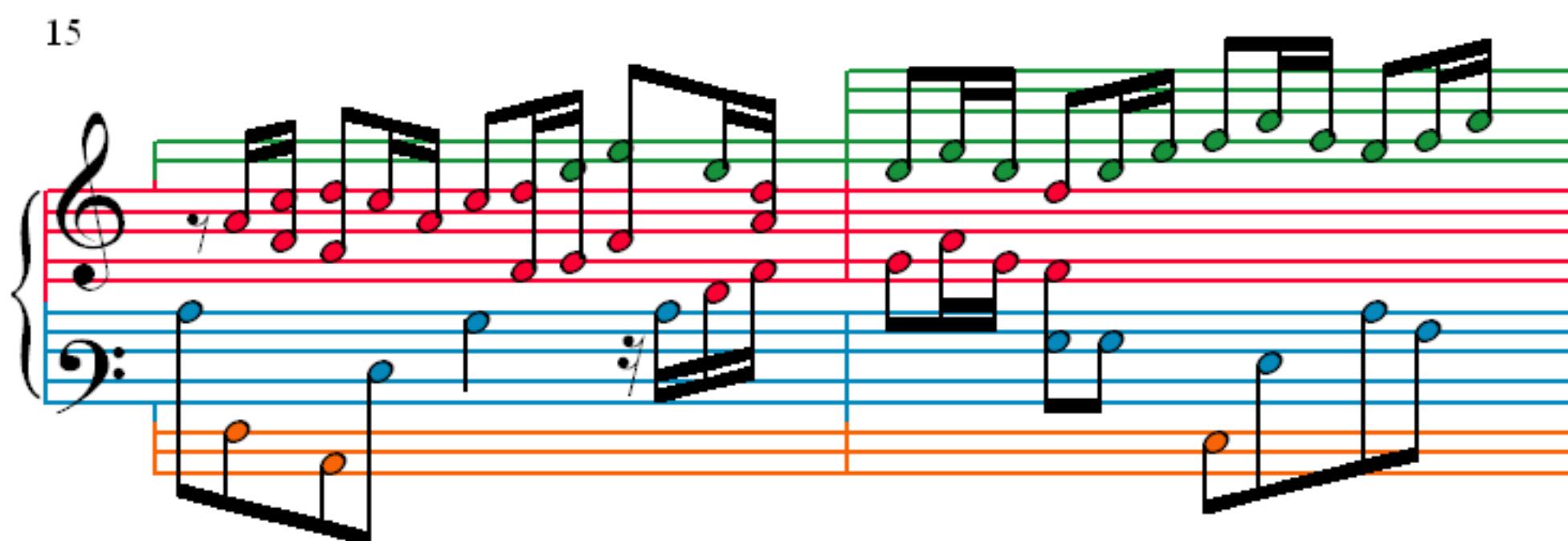
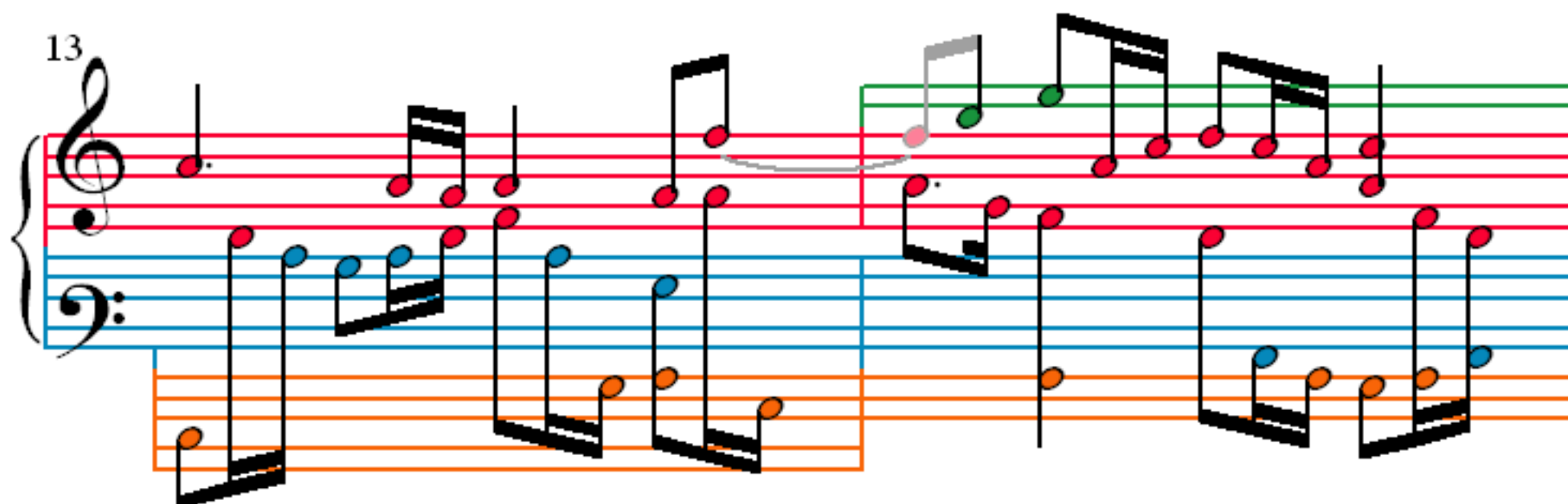
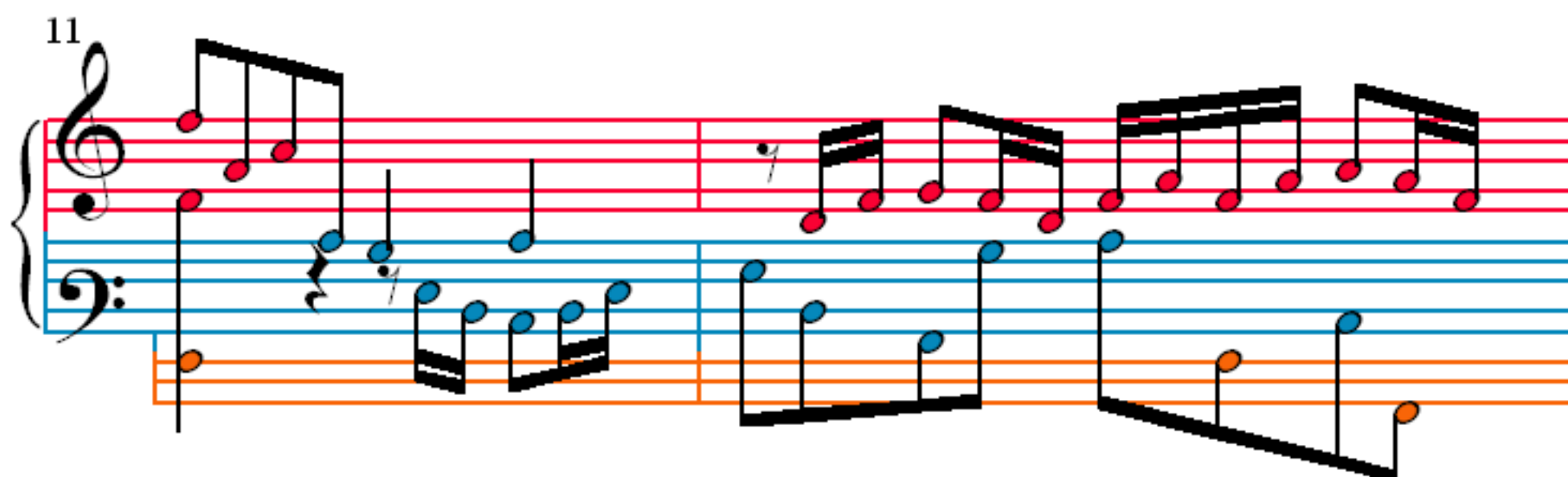
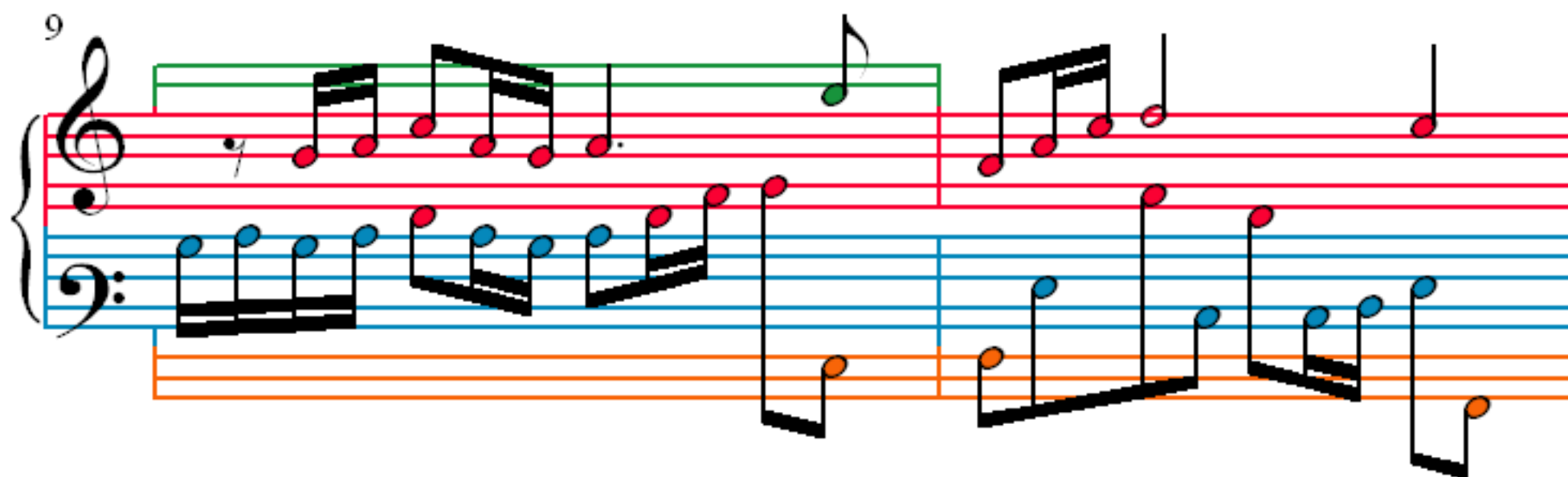
J. S. Bach (1685–1750)

1

3

5

7



17

19

21

23

This image displays a musical score for Fuga XVI, measures 17 through 23. The score is written for a grand piano, with a treble clef on the upper staff and a bass clef on the lower staff. The notation is color-coded: green for the right hand (treble clef), blue for the left hand (bass clef), and orange for the pedal point (lower bass line). The measures are numbered 17, 19, 21, and 23. The music features complex rhythmic patterns, including sixteenth and thirty-second notes, and rests. The score is presented in a clean, professional layout with clear staff lines and note heads.

25

Measures 25 and 26. The treble clef staff contains red notes, and the bass clef staff contains blue notes. An additional orange staff is positioned below the bass clef staff, containing orange notes. The music consists of eighth and sixteenth notes.

27

Measures 27 and 28. The treble clef staff contains green and red notes, while the bass clef staff contains blue notes. An orange staff is located below the bass clef staff. Measure 28 ends with a fermata over the final note.

29

Measures 29 and 30. The treble clef staff contains green and red notes, and the bass clef staff contains blue notes. An orange staff is positioned below the bass clef staff. Both measures begin with a fermata over the first note.

31

Measures 31, 32, and 33. The treble clef staff contains green and red notes, and the bass clef staff contains blue notes. An orange staff is located below the bass clef staff. The system concludes with a double bar line at the end of measure 33.