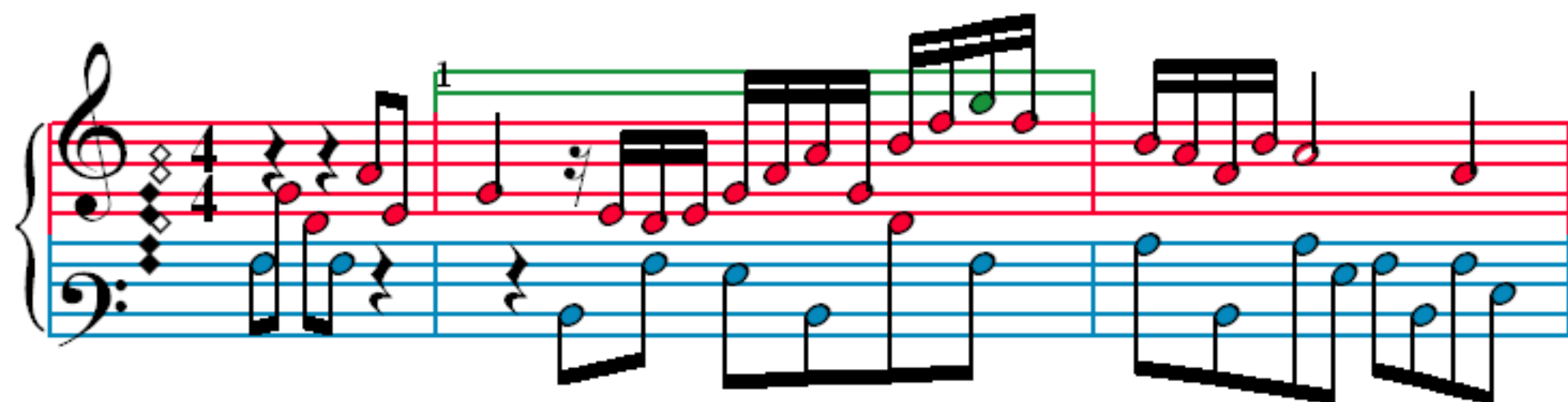


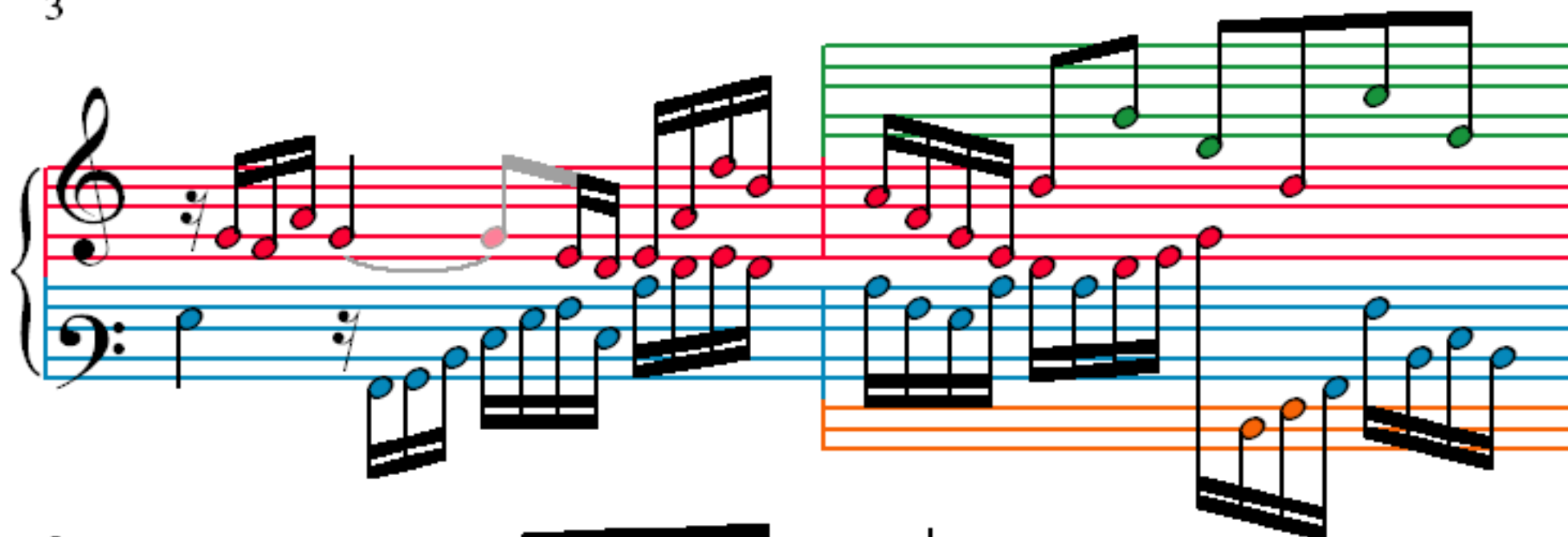
# Das Wohltemperierte Clavier I, Fuga XVII

BWV 862

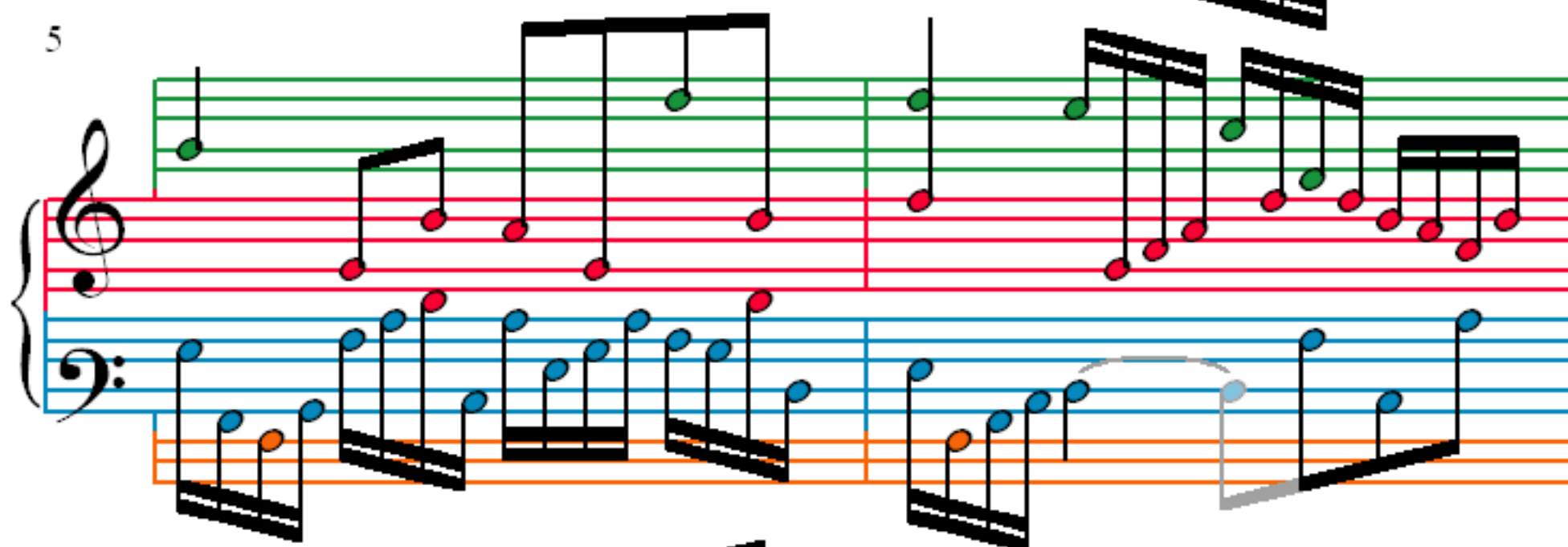
J. S. Bach (1685–1750)



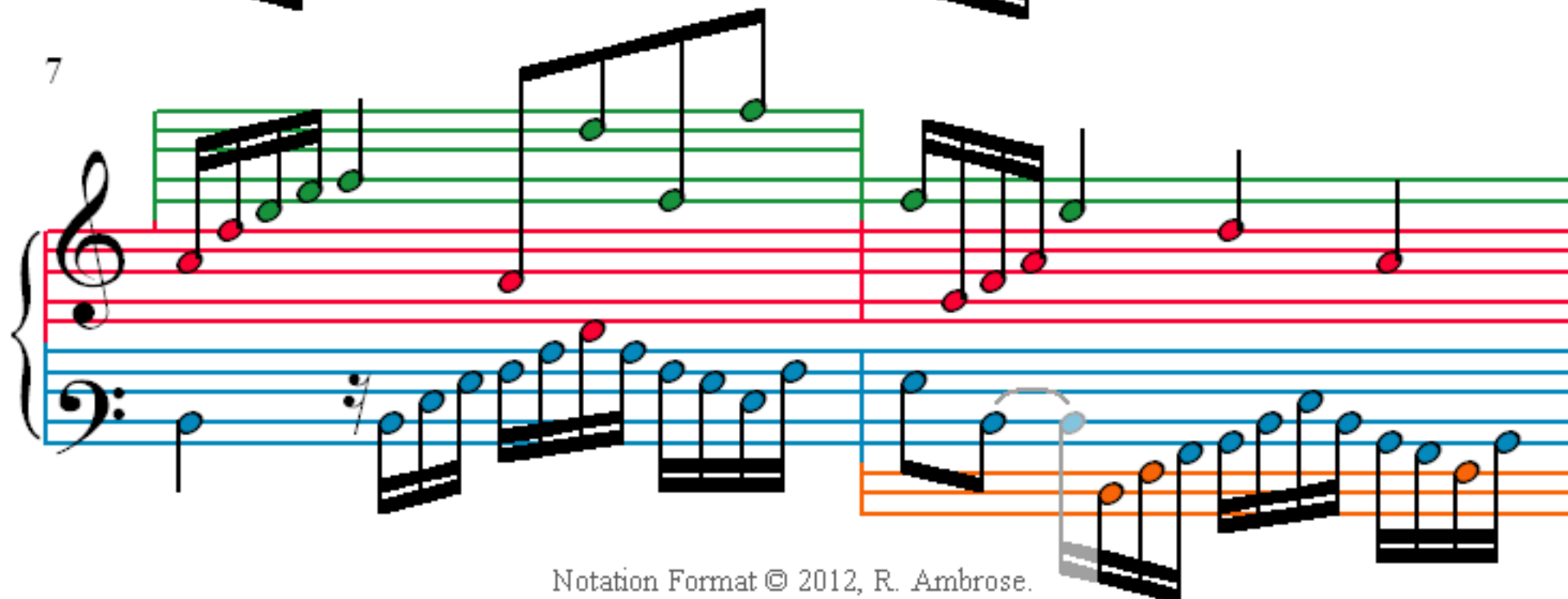
3



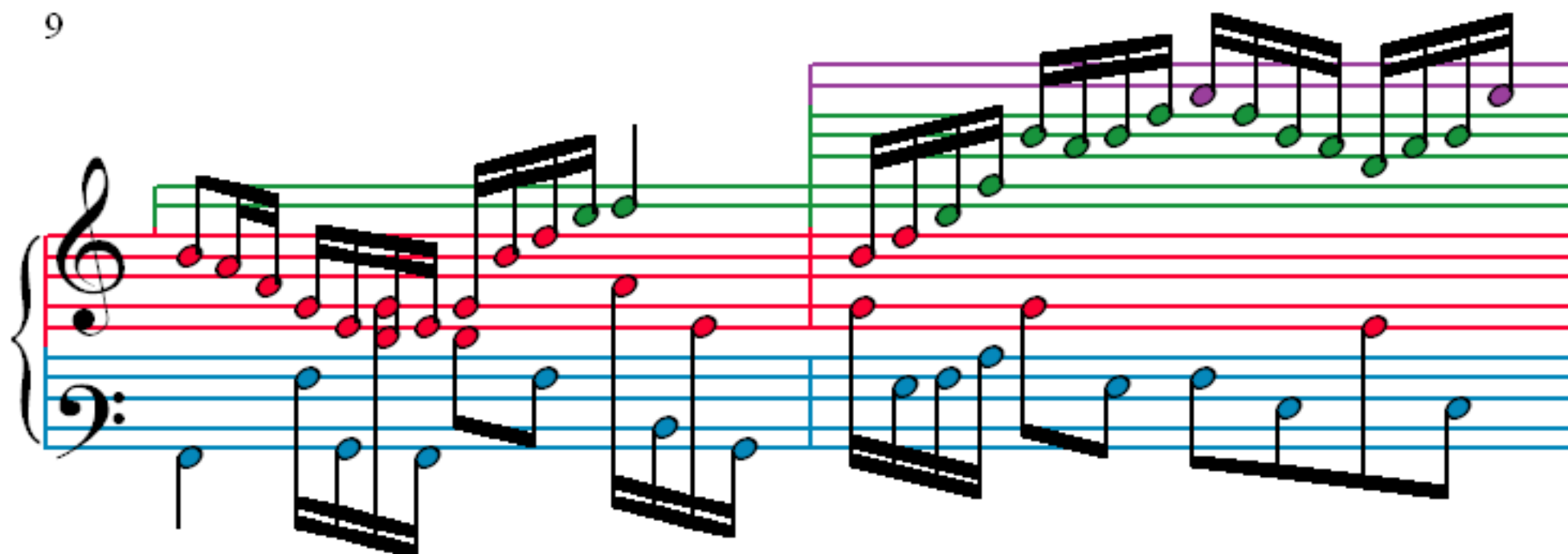
5



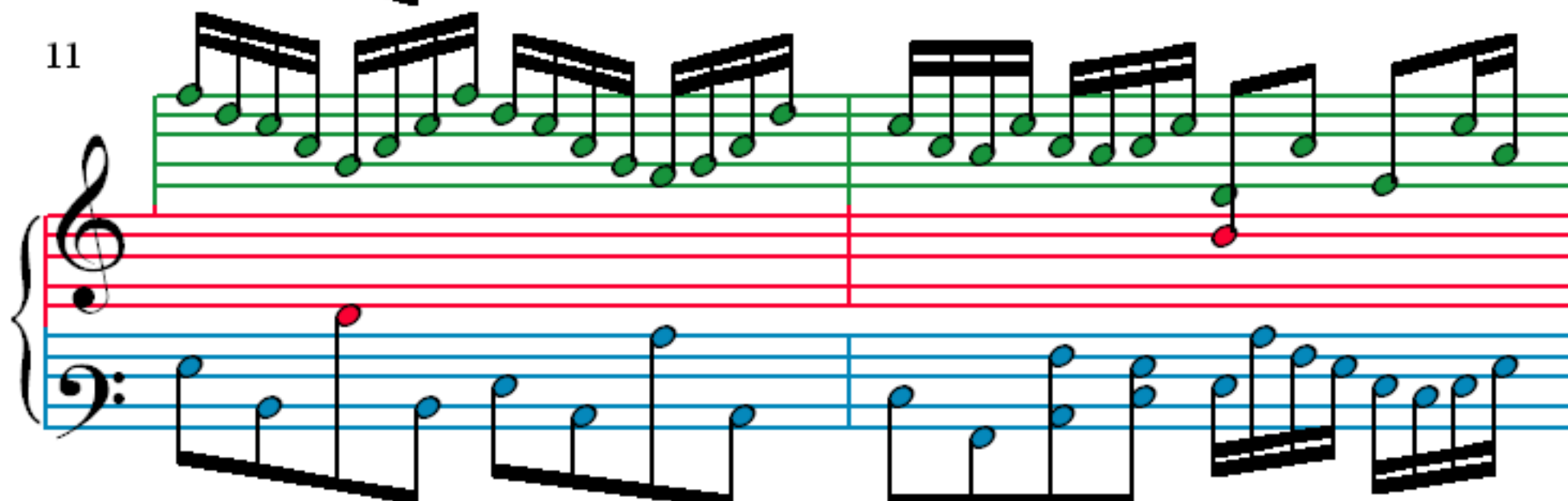
7



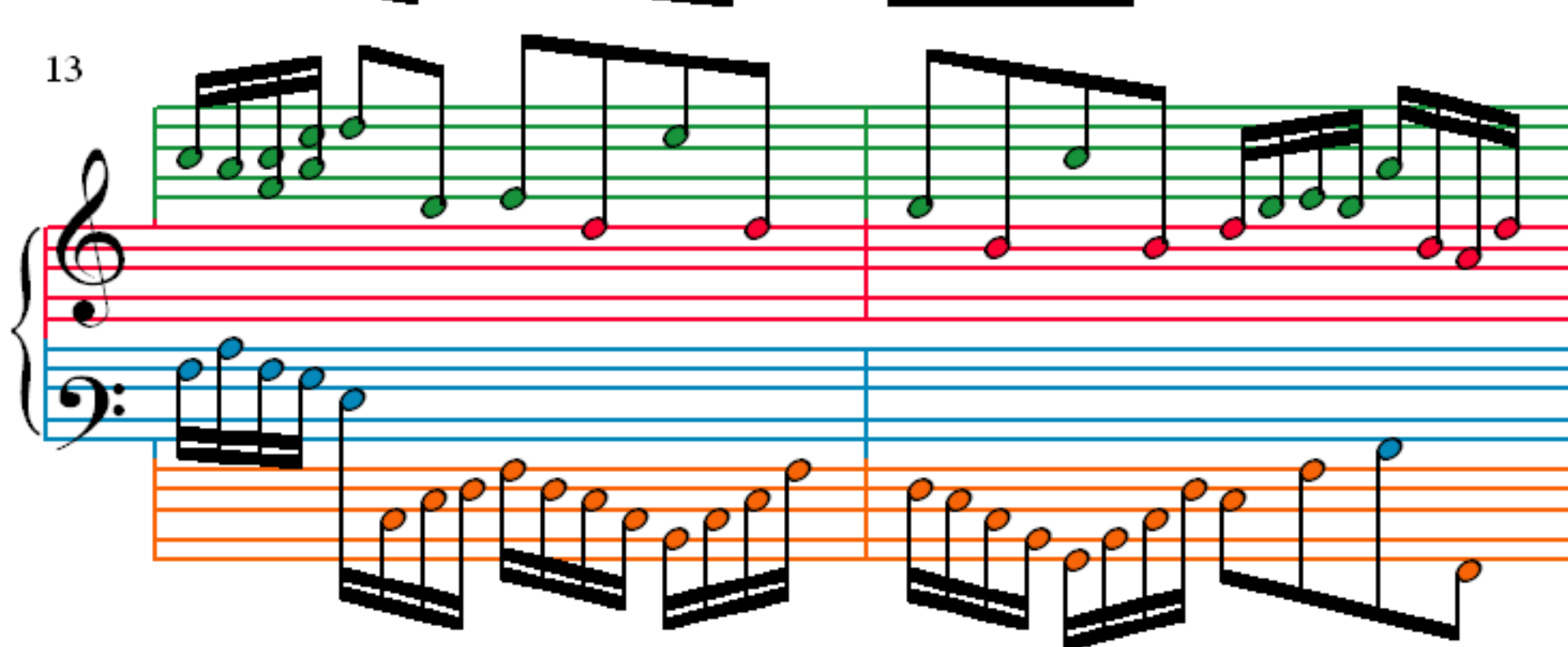
9



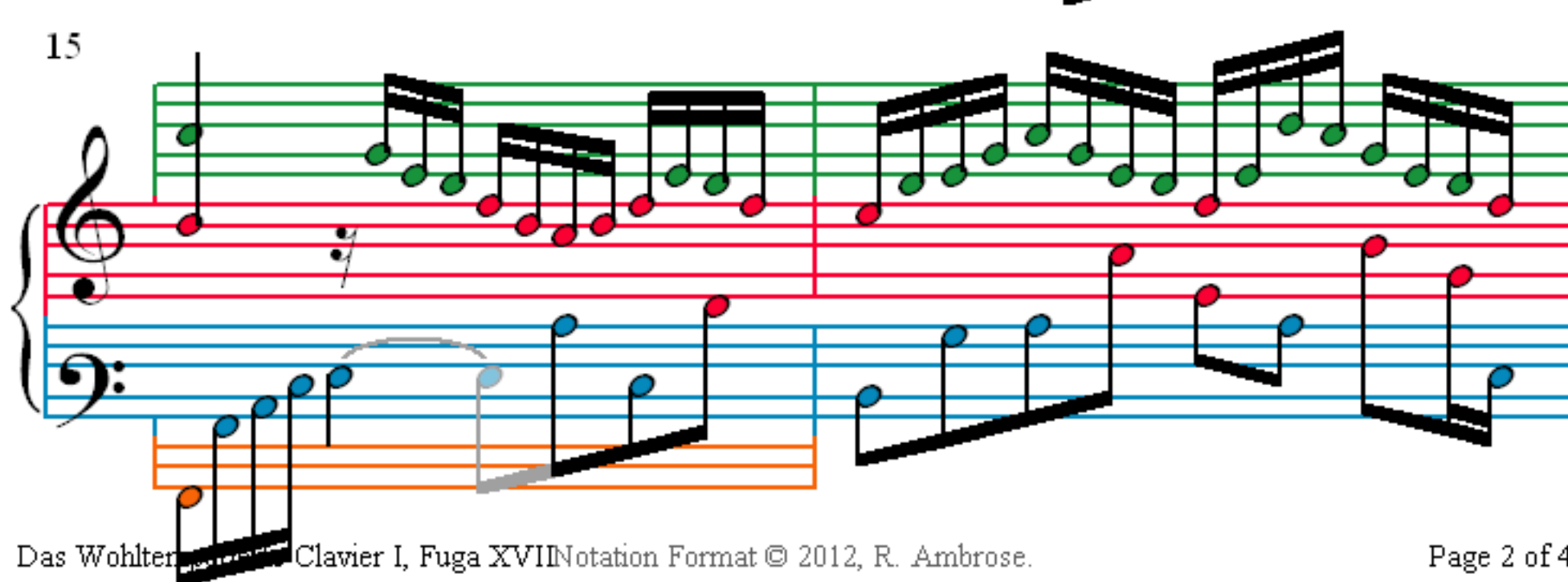
11



13



15



17

Measures 17 and 18 of Fuga XVII. The right hand (treble clef) features a sequence of eighth-note chords, with the first four notes of each chord highlighted in green. The left hand (bass clef) plays a descending eighth-note scale, with the first four notes of each measure highlighted in blue. An orange bracket is placed under the first two measures of the left hand.

19

Measures 19 and 20 of Fuga XVII. The right hand continues with eighth-note chords, with the first four notes of each chord highlighted in green. The left hand plays a descending eighth-note scale, with the first four notes of each measure highlighted in blue. A pink bracket is placed under the first two measures of the right hand.

21

Measures 21 and 22 of Fuga XVII. The right hand continues with eighth-note chords, with the first four notes of each chord highlighted in green. The left hand plays a descending eighth-note scale, with the first four notes of each measure highlighted in blue. An orange bracket is placed under the first two measures of the left hand.

23

Measures 23 and 24 of Fuga XVII. The right hand continues with eighth-note chords, with the first four notes of each chord highlighted in green. The left hand plays a descending eighth-note scale, with the first four notes of each measure highlighted in blue.

25

27

29

32