

Toccata in F Sharp Minor

BWV 910

J. S. Bach (1685–1750)

1

2

4

6

8

11

14

17

20

24

28

32

36

Measures 36-39. Treble clef: green notes. Middle staff: red notes. Bass clef: blue notes. Measure 39 ends with a blue note on the bottom line.

40

Measures 40-43. Treble clef: green notes. Middle staff: red notes. Bass clef: blue notes. Measure 43 ends with an orange note on the bottom line.

44

Measures 44-47. Treble clef: green notes. Middle staff: red notes. Bass clef: blue notes. Measure 47 ends with an orange note on the bottom line.

48

Measures 48-51. Treble clef: green notes. Middle staff: red notes. Bass clef: blue notes. Measure 51 ends with an orange note on the bottom line.

52

56

59

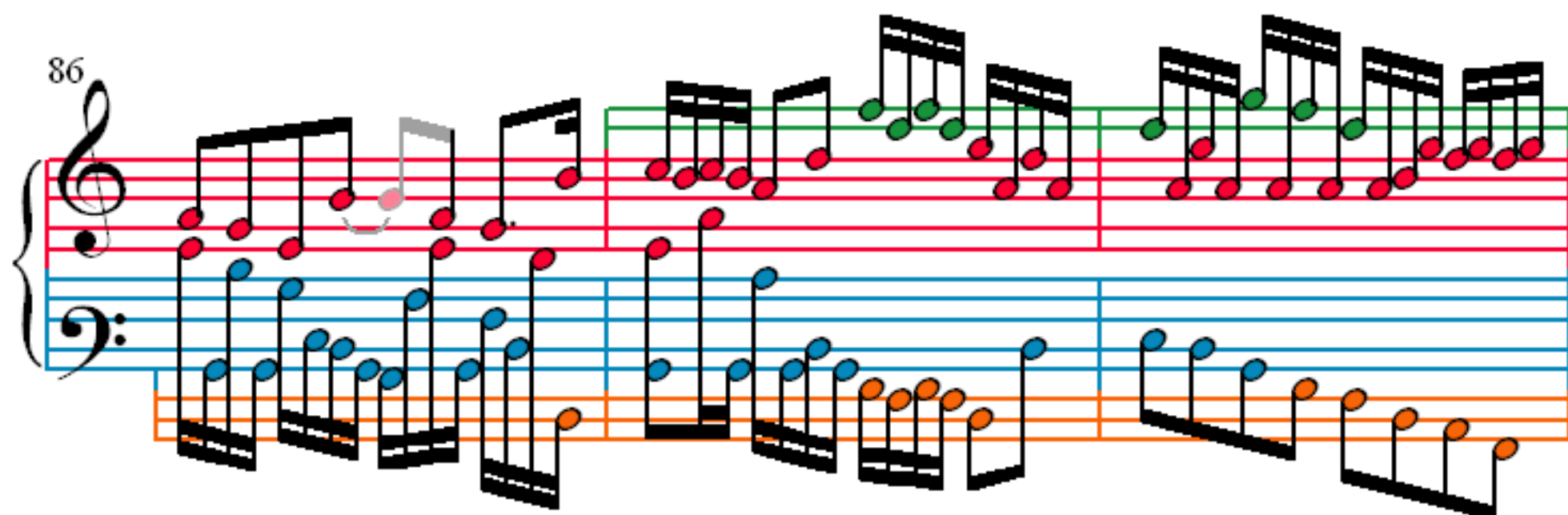
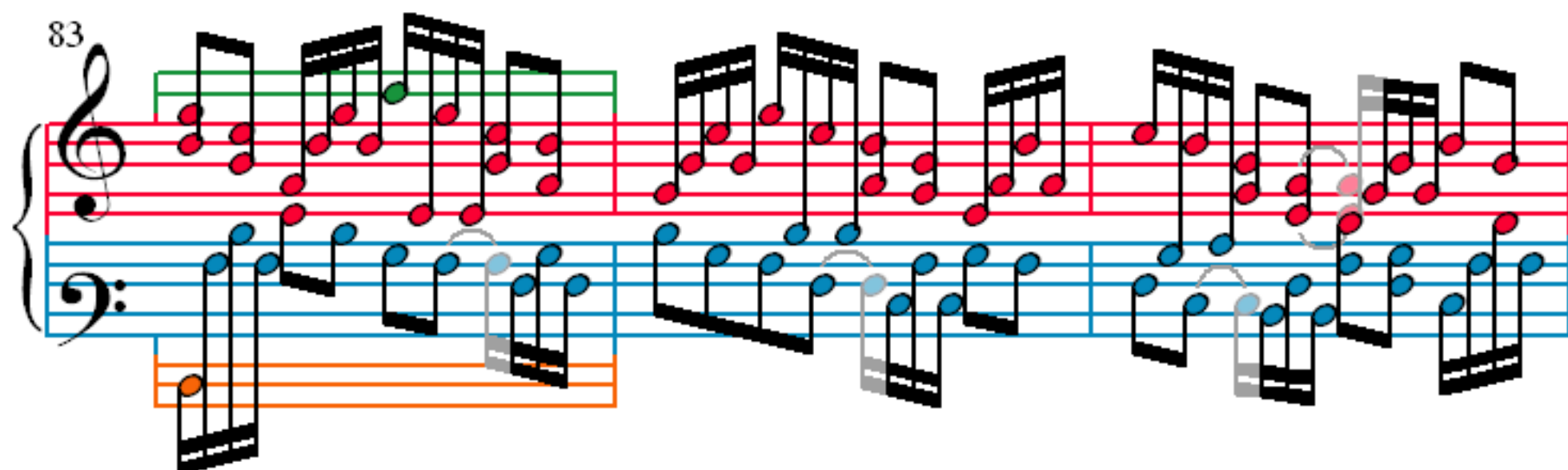
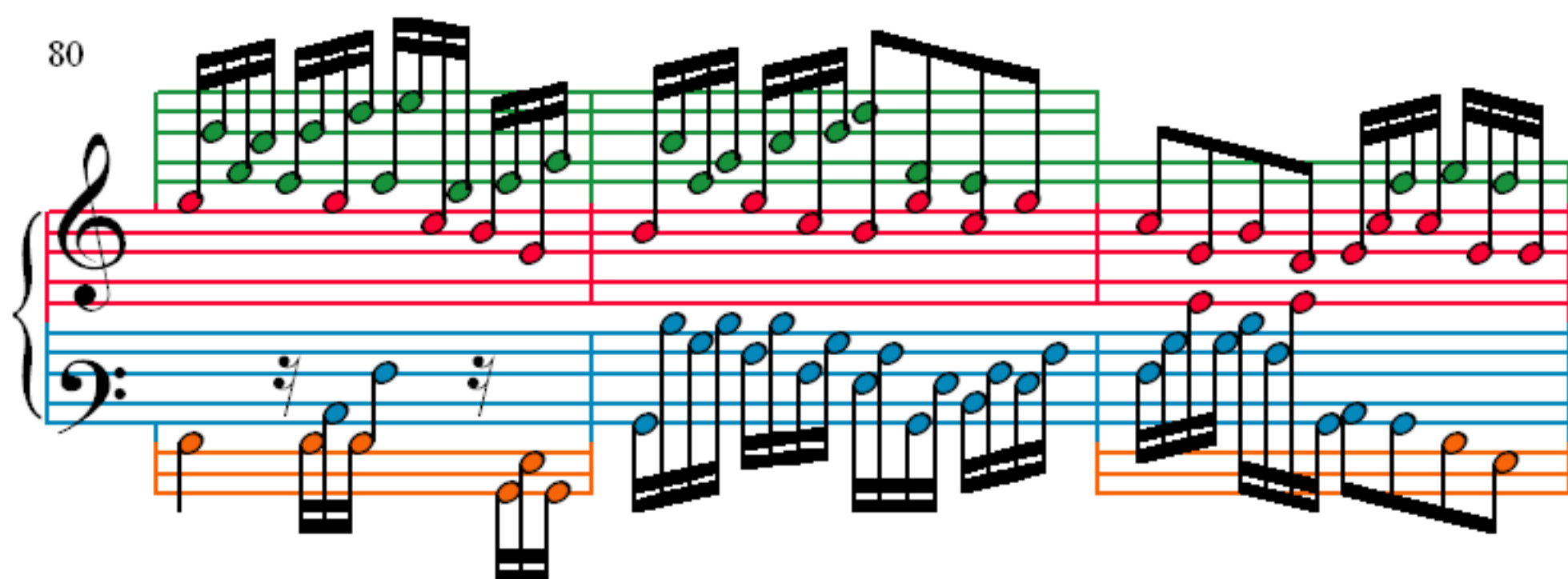
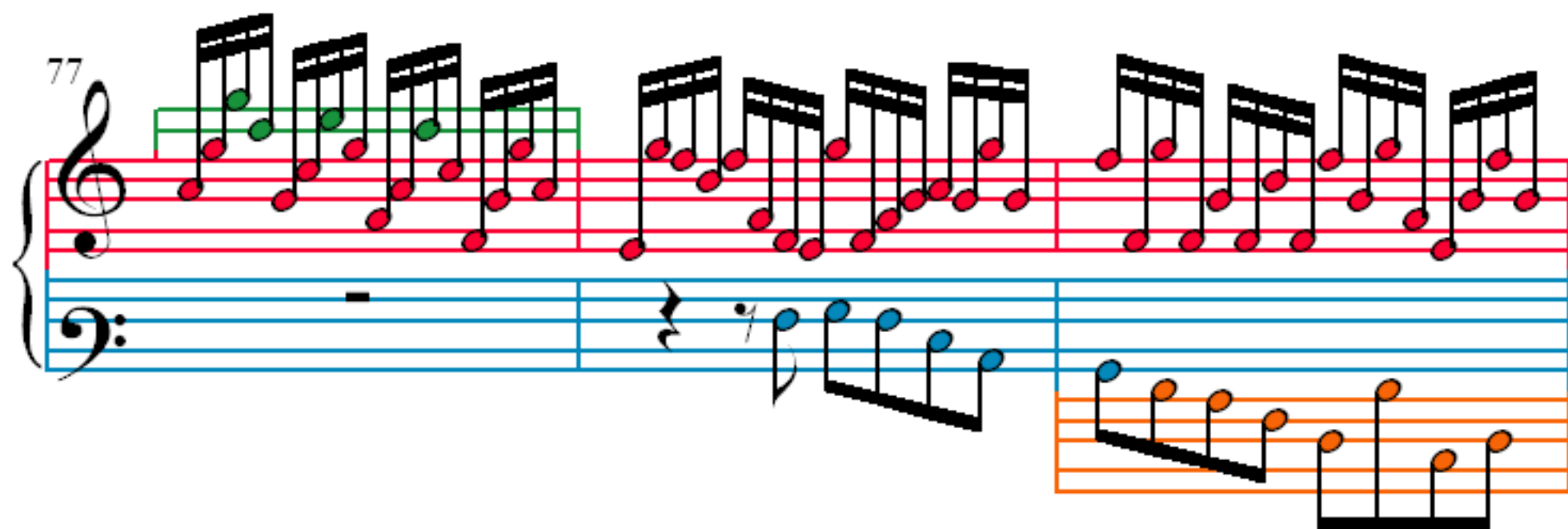
62

65

68

71

74



89

92

95

98

101

Measures 101-103 of the Toccata in F Sharp Minor. The notation is for a grand staff (treble and bass clefs). The treble staff features a complex melodic line with many beamed sixteenth and thirty-second notes, some of which are highlighted in green. The bass staff provides a harmonic accompaniment with blue notes, including some beamed sixteenth notes. A third staff, highlighted in orange, shows a lower register accompaniment with beamed sixteenth notes. A grey bracket in measure 103 groups a sequence of notes in the treble staff.

104

Measures 104-106 of the Toccata in F Sharp Minor. The treble staff continues with rapid, beamed sixteenth-note passages, with some notes in green. The bass staff has blue notes, including a few beamed sixteenth notes. The orange staff continues with a lower register accompaniment of beamed sixteenth notes.

107

Measures 107-109 of the Toccata in F Sharp Minor. The treble staff features rapid, beamed sixteenth-note passages, with some notes in green. The bass staff has blue notes, including a few beamed sixteenth notes. The orange staff continues with a lower register accompaniment of beamed sixteenth notes.

110

Measures 110-112 of the Toccata in F Sharp Minor. The treble staff continues with rapid, beamed sixteenth-note passages, with some notes in green. The bass staff has blue notes, including a few beamed sixteenth notes. The orange staff continues with a lower register accompaniment of beamed sixteenth notes.

113

116

119

122

125

128

131

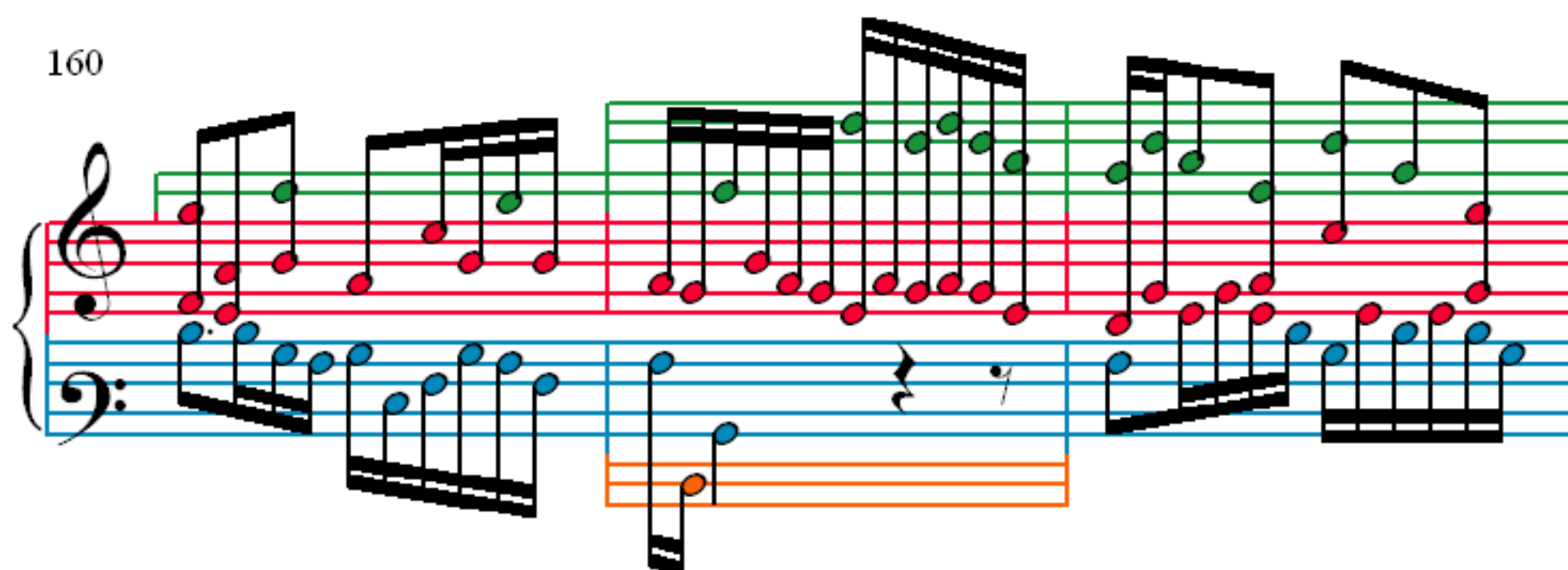
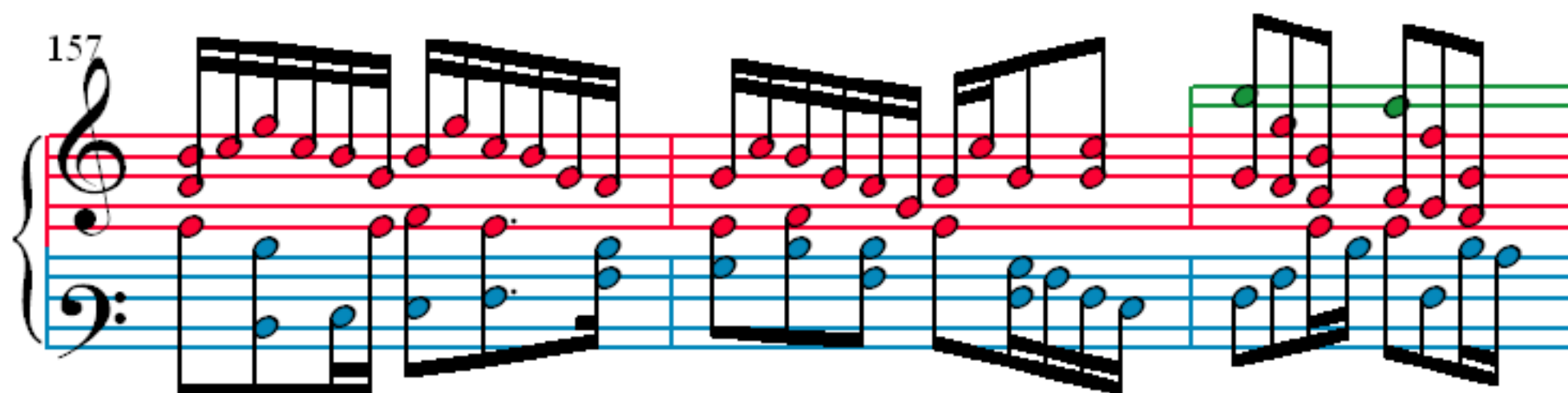
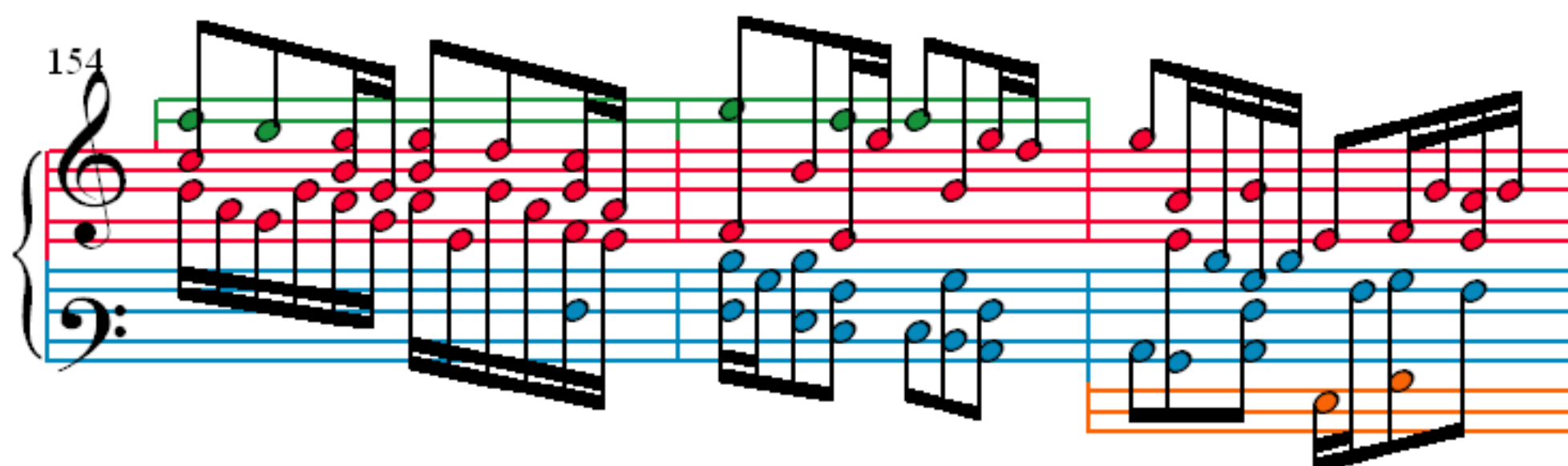
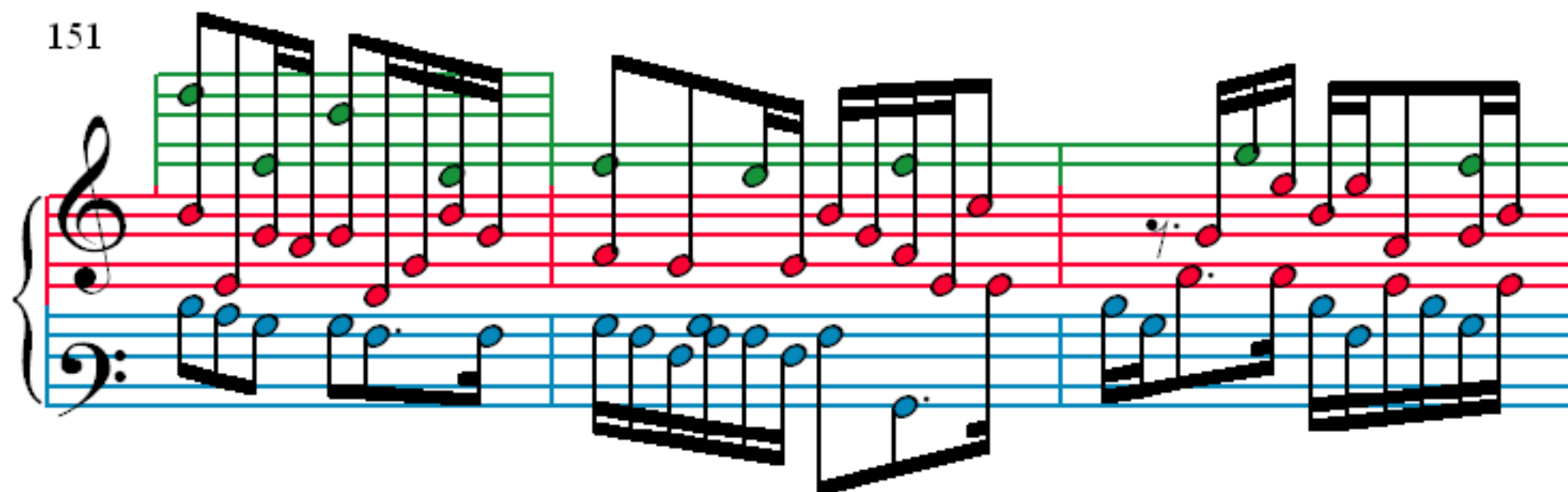
134

138

141

144

147



163

166

169

172

175

178

181

184

187

Measures 187-189. Treble clef: green and red notes. Bass clef: blue and orange notes. Measure 189 has a fermata over the final note.

190

Measures 190-192. Treble clef: red notes and rests. Bass clef: blue and orange notes. Measure 192 has a fermata over the final note.

193

Measures 193-195. Treble clef: red and green notes. Bass clef: blue notes and rests. Measure 195 has a fermata over the final note.

196

Measures 196-198. Treble clef: green and red notes. Bass clef: blue and orange notes. Measure 198 has a fermata over the final note.