

# Fugue in C major

## BWV 952

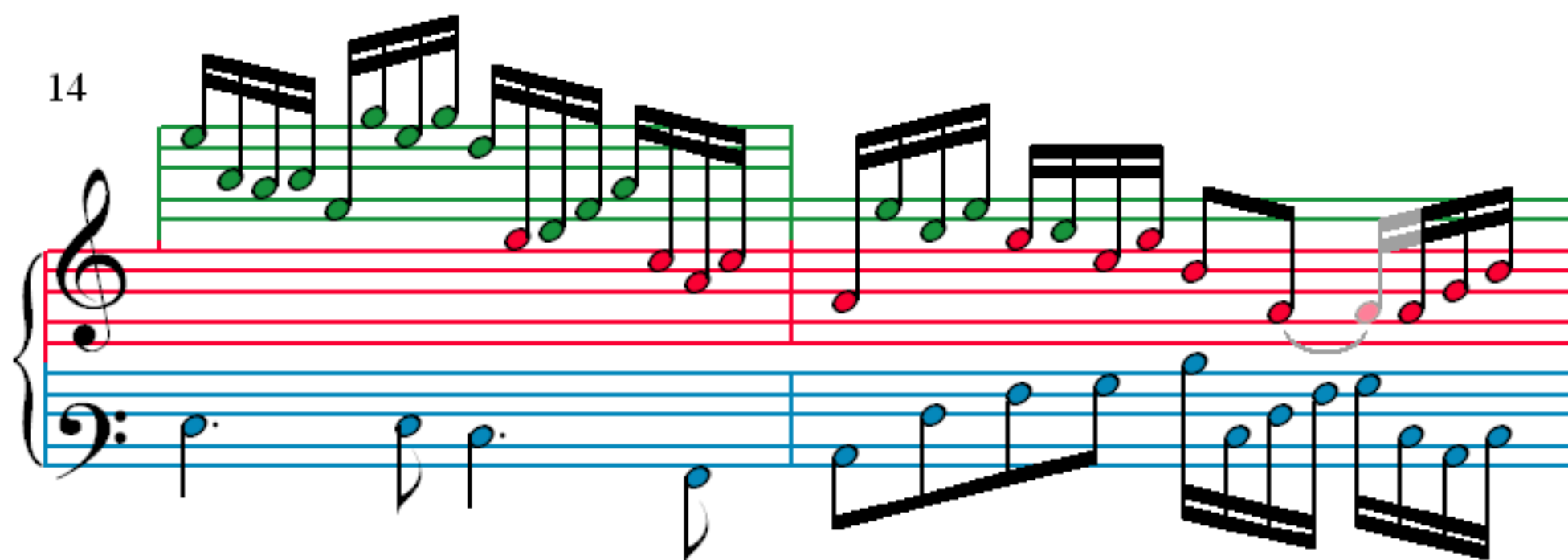
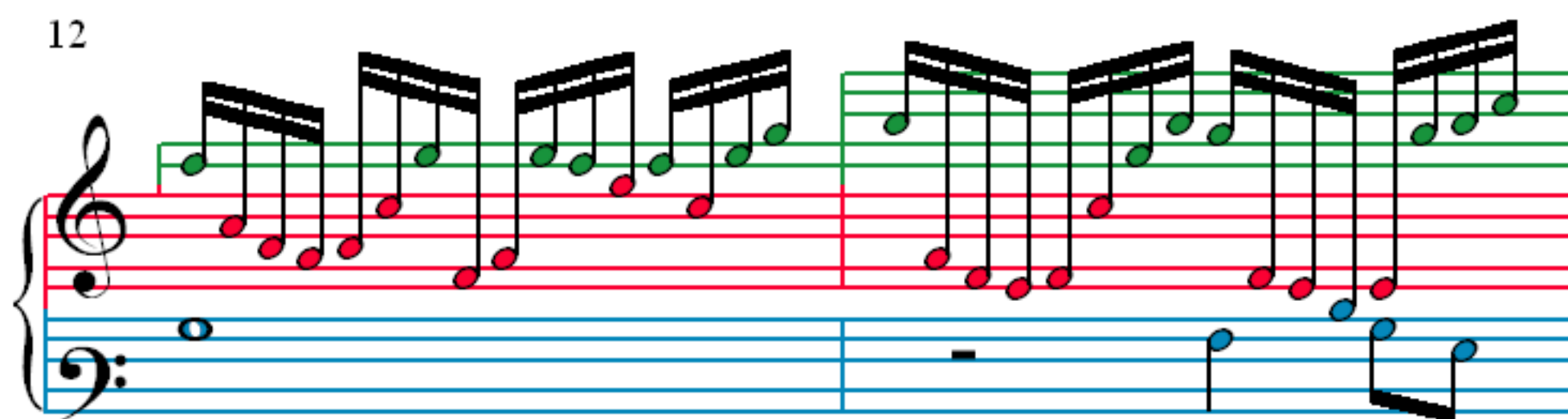
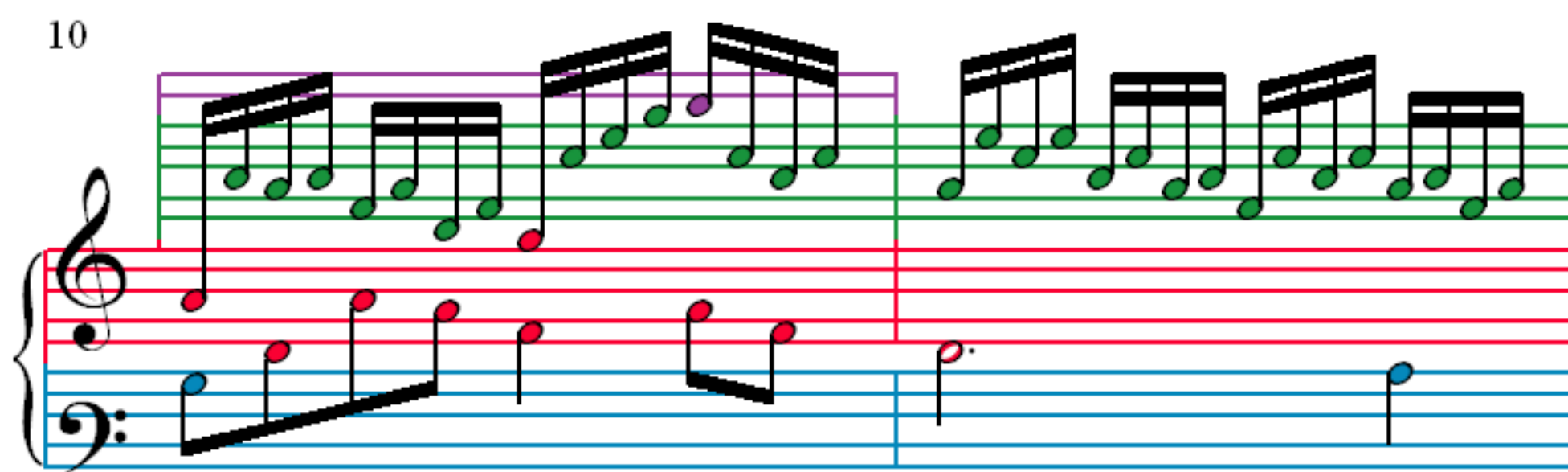
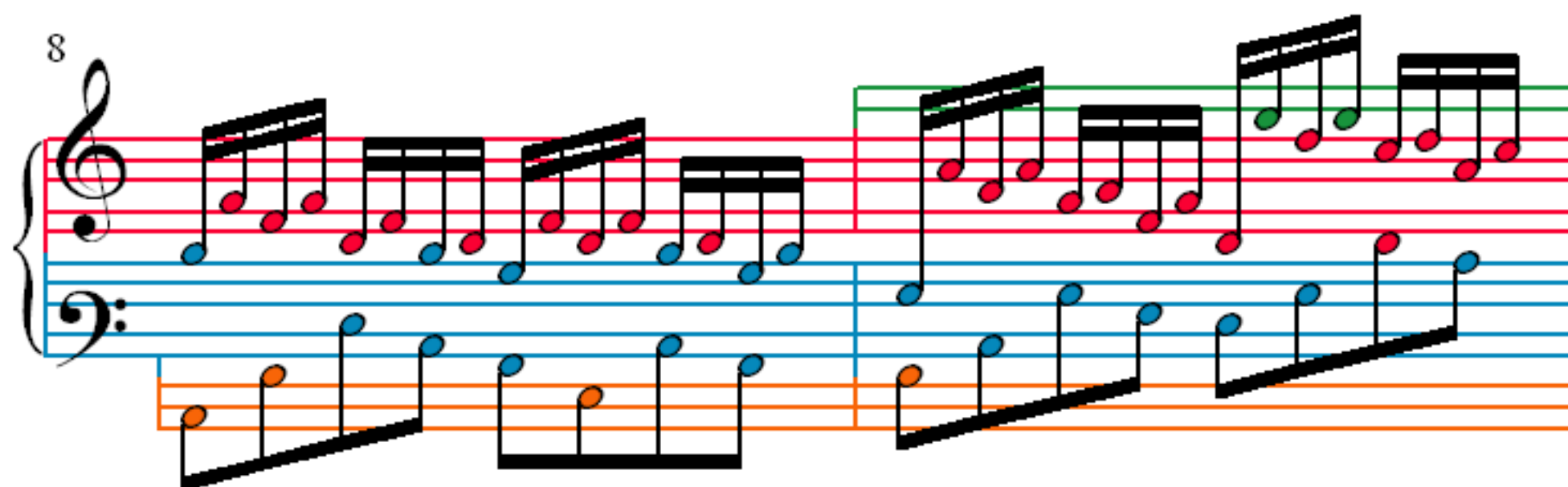
J. S. Bach (1685–1750)

1

2

4

6



16

18

20

22

24

Measures 24 and 25 of a fugue in C major. The notation is presented in two systems. Each system consists of a grand staff with a treble clef (top) and a bass clef (bottom). The treble staff has a red line and a green line. The bass staff has a blue line and an orange line. The notes are color-coded: red for the treble staff and blue for the bass staff. Measure 24 shows a treble staff with a half note G4, a quarter note A4, and a half note B4, followed by a quarter rest. The bass staff has a half note C4, a quarter note D4, and a half note E4, followed by a quarter rest. Measure 25 shows a treble staff with a half note F#4, a quarter note G4, and a half note A4, followed by a quarter rest. The bass staff has a half note B4, a quarter note C5, and a half note D5, followed by a quarter rest.

26

Measures 26 and 27 of a fugue in C major. The notation is presented in two systems. Each system consists of a grand staff with a treble clef (top) and a bass clef (bottom). The treble staff has a red line and a green line. The bass staff has a blue line and an orange line. The notes are color-coded: red for the treble staff and blue for the bass staff. Measure 26 shows a treble staff with a half note E4, a quarter note F#4, and a half note G4, followed by a quarter rest. The bass staff has a half note A4, a quarter note B4, and a half note C5, followed by a quarter rest. Measure 27 shows a treble staff with a half note D5, a quarter note E5, and a half note F#5, followed by a quarter rest. The bass staff has a half note G5, a quarter note A5, and a half note B5, followed by a quarter rest.

28

Measures 28 and 29 of a fugue in C major. The notation is presented in two systems. Each system consists of a grand staff with a treble clef (top) and a bass clef (bottom). The treble staff has a red line and a green line. The bass staff has a blue line and an orange line. The notes are color-coded: red for the treble staff and blue for the bass staff. Measure 28 shows a treble staff with a half note C5, a quarter note D5, and a half note E5, followed by a quarter rest. The bass staff has a half note F#5, a quarter note G5, and a half note A5, followed by a quarter rest. Measure 29 shows a treble staff with a half note B5, a quarter note C6, and a half note D6, followed by a quarter rest. The bass staff has a half note E6, a quarter note F#6, and a half note G6, followed by a quarter rest.

31

Measures 31 and 32 of a fugue in C major. The notation is presented in two systems. Each system consists of a grand staff with a treble clef (top) and a bass clef (bottom). The treble staff has a red line and a green line. The bass staff has a blue line and an orange line. The notes are color-coded: red for the treble staff and blue for the bass staff. Measure 31 shows a treble staff with a half note A4, a quarter note B4, and a half note C5, followed by a quarter rest. The bass staff has a half note D5, a quarter note E5, and a half note F#5, followed by a quarter rest. Measure 32 shows a treble staff with a half note G5, a quarter note A5, and a half note B5, followed by a quarter rest. The bass staff has a half note C6, a quarter note D6, and a half note E6, followed by a quarter rest.