

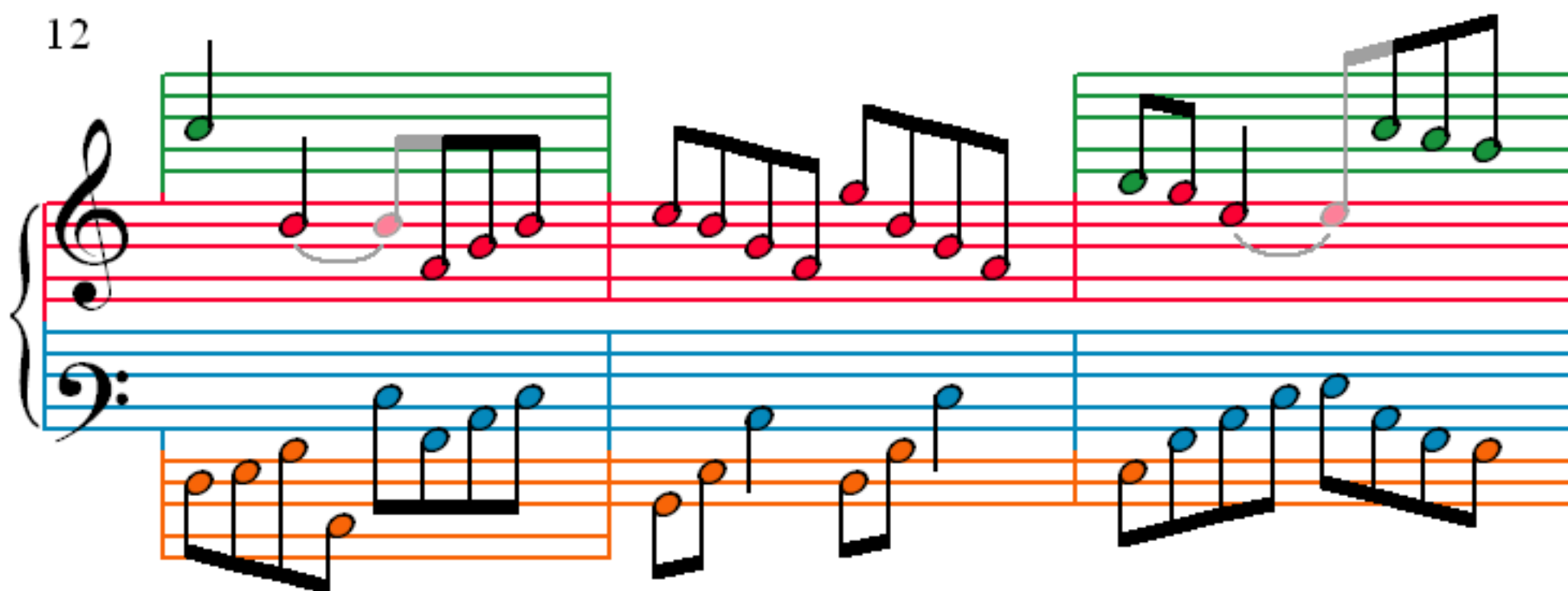
Die Kunst der Fuge

Contrapunctus XIII Canon alla Duodecima BWV 1080

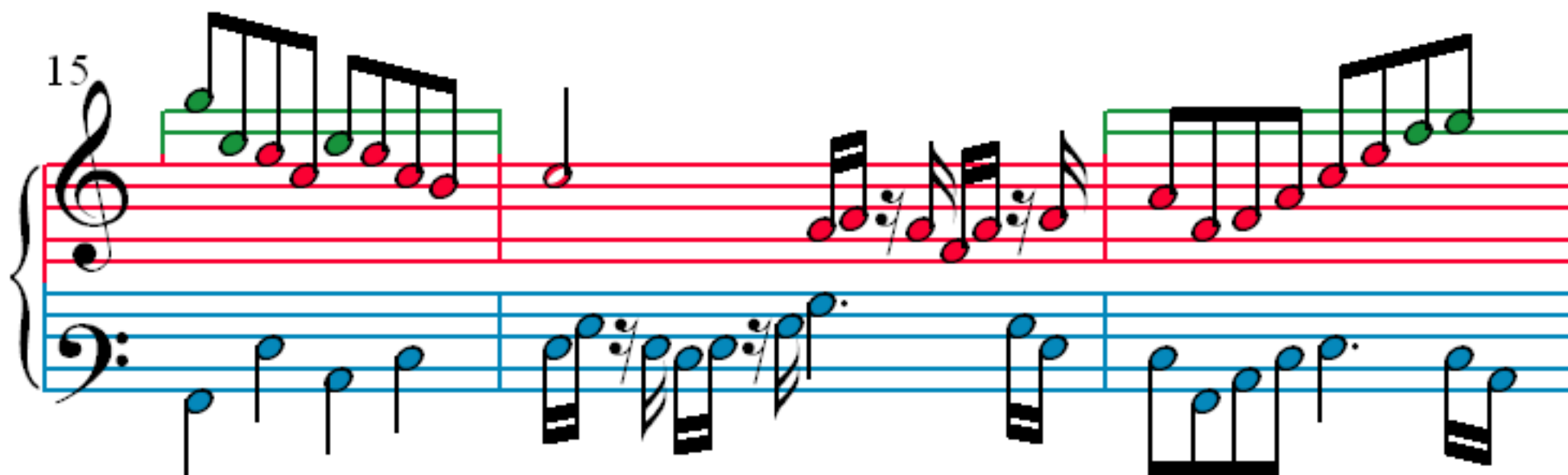
J. S. Bach (1685–1750)

The image displays a musical score for Contrapunctus XIII, Canon alla Duodecima BWV 1080 by J.S. Bach. The score is written for two staves, Treble and Bass, with a 2/2 time signature. The notation is color-coded: blue for the first voice, orange for the second, green for the third, and red for the fourth. The score is divided into four systems, each starting with a measure number (1, 3, 6, 9). The first system (measures 1-3) shows the first voice (blue) and the second voice (orange) entering. The second system (measures 4-6) shows the third voice (green) entering. The third system (measures 7-9) shows the fourth voice (red) entering. The fourth system (measures 10-12) shows the first voice (blue) and the second voice (orange) continuing. The notation includes various musical symbols such as notes, rests, and accidentals.

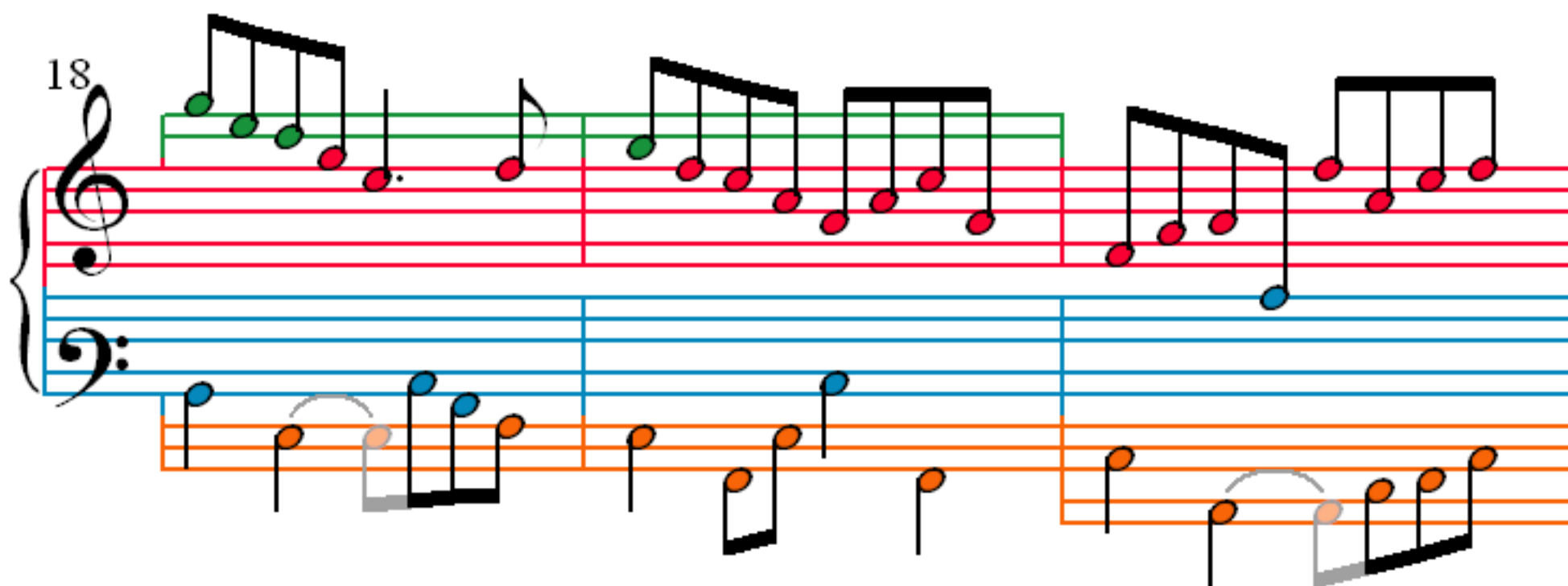
12



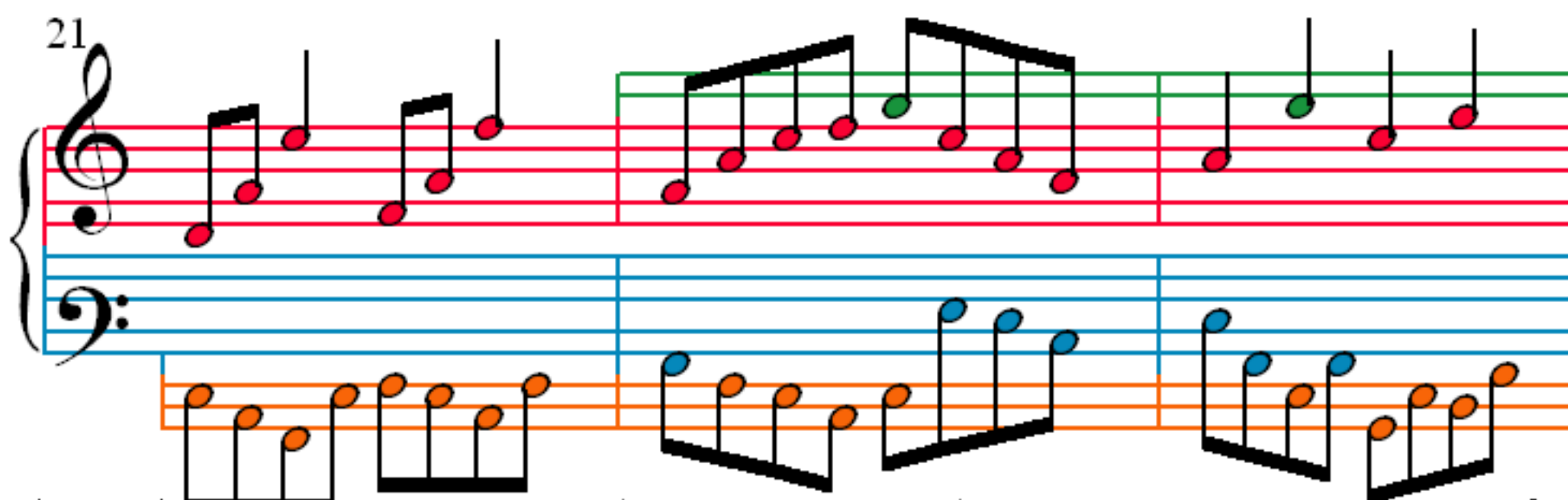
15



18



21



24

27

30

33

36

39

42

45

48

Measures 48-50. Treble clef: green notes. Bass clef: blue notes. Measure 49: orange notes in the bass clef. Measure 50: orange notes in the bass clef.

51

Measures 51-53. Treble clef: red notes. Bass clef: blue notes. Measure 52: orange notes in the bass clef. Measure 53: orange notes in the bass clef.

54

Measures 54-56. Treble clef: red notes. Bass clef: blue notes. Measure 55: orange notes in the bass clef. Measure 56: orange notes in the bass clef.

57

Measures 57-60. Treble clef: green notes. Bass clef: blue notes. Measure 58: orange notes in the bass clef. Measure 59: orange notes in the bass clef. Measure 60: orange notes in the bass clef.

60

Measures 60-62. Treble clef: measure 60 has a green line and red notes; measure 61 has a grey slur over the bass line; measure 62 has a red note. Bass clef: measure 60 has an orange line and blue notes; measure 61 has a grey slur over the bass line; measure 62 has a red note.

63

Measures 63-65. Treble clef: measure 63 has a green line and red notes; measure 64 has a grey slur over the treble line; measure 65 has a red note. Bass clef: measure 63 has an orange line and blue notes; measure 64 has a grey slur over the bass line; measure 65 has a red note.

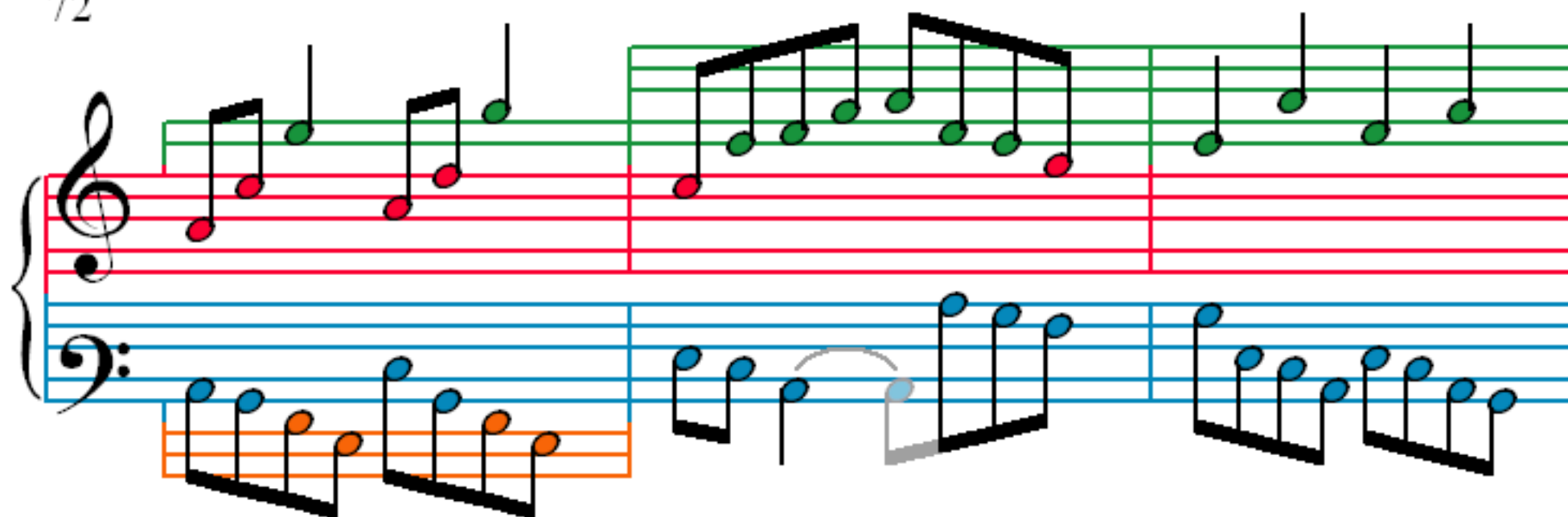
66

Measures 66-68. Treble clef: measure 66 has a green line and red notes; measure 67 has a grey slur over the treble line; measure 68 has a red note. Bass clef: measure 66 has an orange line and blue notes; measure 67 has a grey slur over the bass line; measure 68 has a red note.

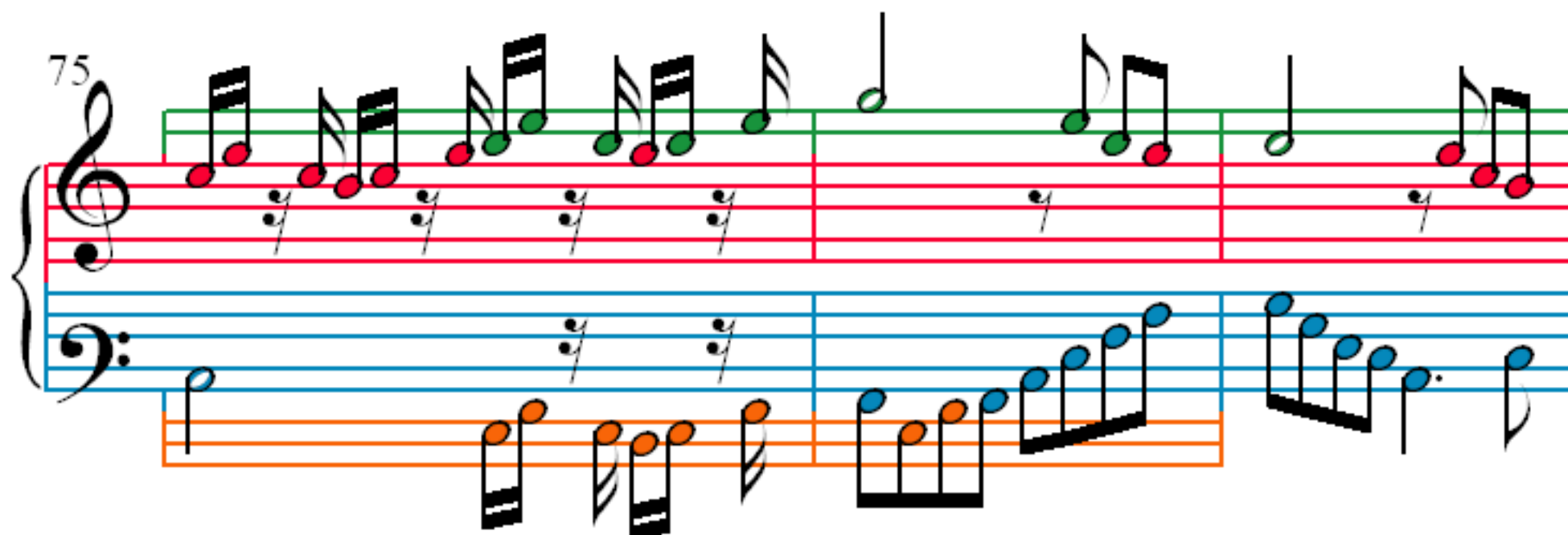
69

Measures 69-71. Treble clef: measure 69 has a green line and red notes; measure 70 has a grey slur over the treble line; measure 71 has a red note. Bass clef: measure 69 has an orange line and blue notes; measure 70 has a grey slur over the bass line; measure 71 has a red note.

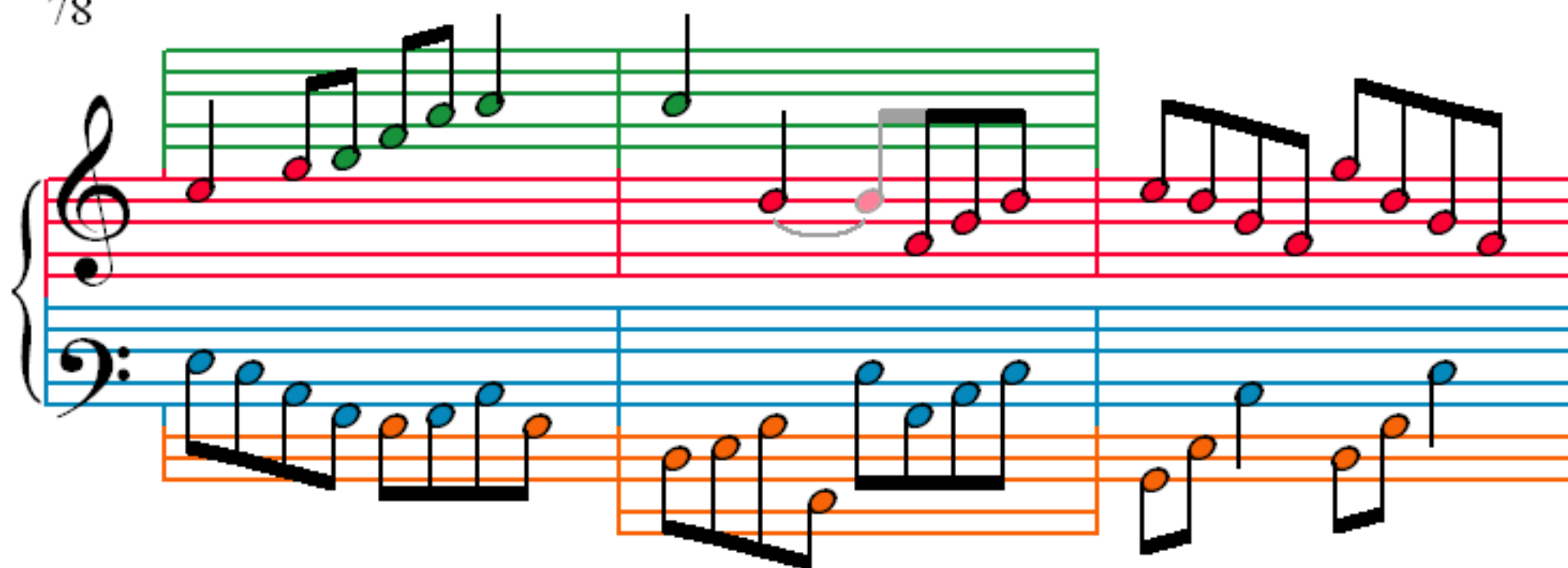
72



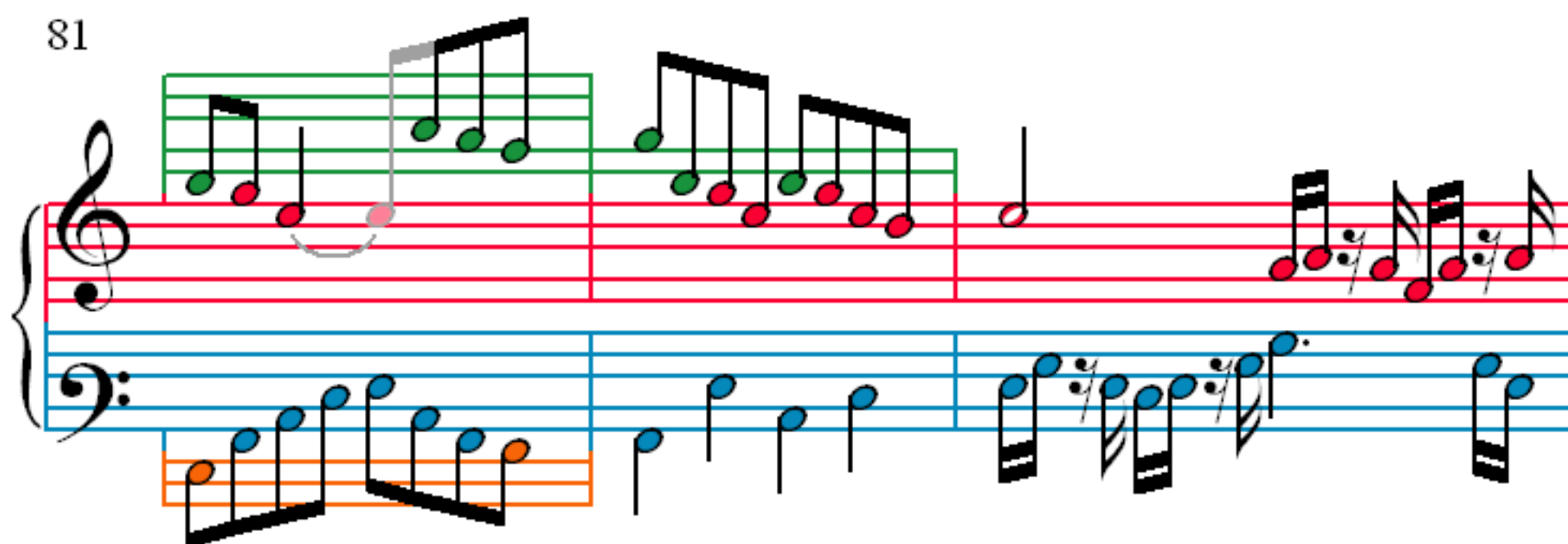
75



78



81



84

Measures 84-86. Treble clef has a green line at the top. Bass clef has an orange line at the bottom. Notes are colored red, blue, green, and orange.

87

Measures 87-89. Treble clef has a green line at the top. Bass clef has an orange line at the bottom. Notes are colored red, blue, green, and orange.

90

Measures 90-92. Treble clef has a green line at the top. Bass clef has an orange line at the bottom. Notes are colored red, blue, green, and orange.

93

Measures 93-95. Treble clef has a green line at the top. Bass clef has an orange line at the bottom. Notes are colored red, blue, green, and orange.

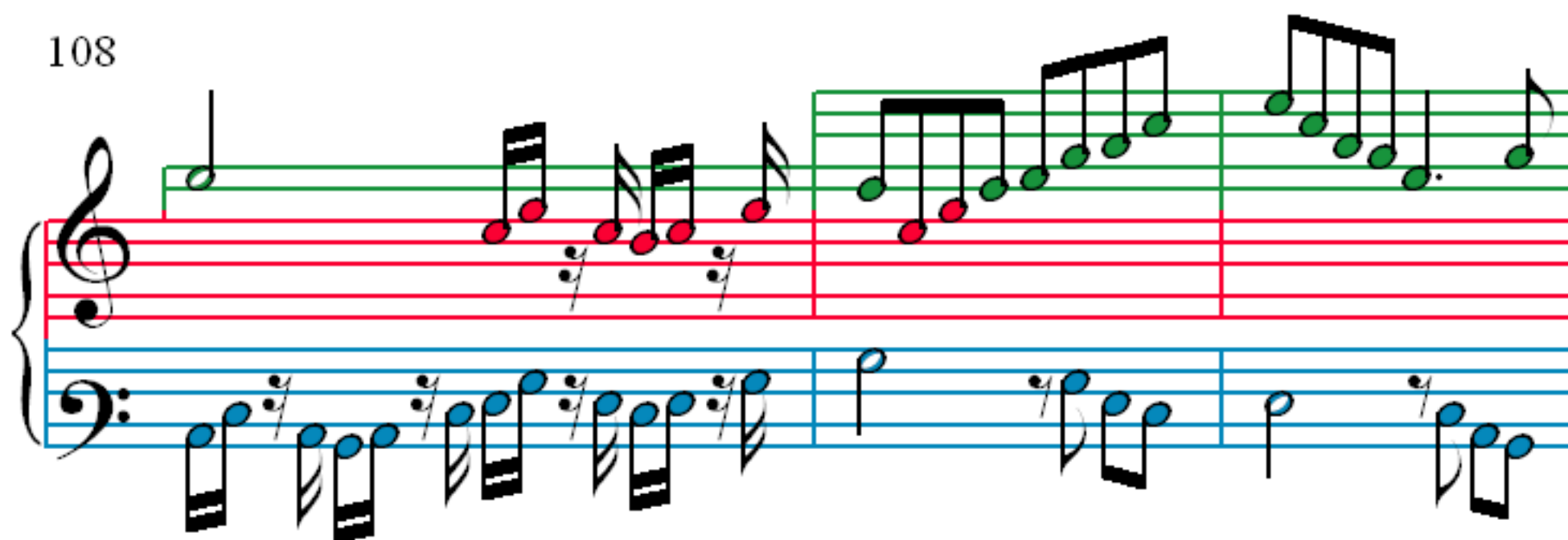
96

99

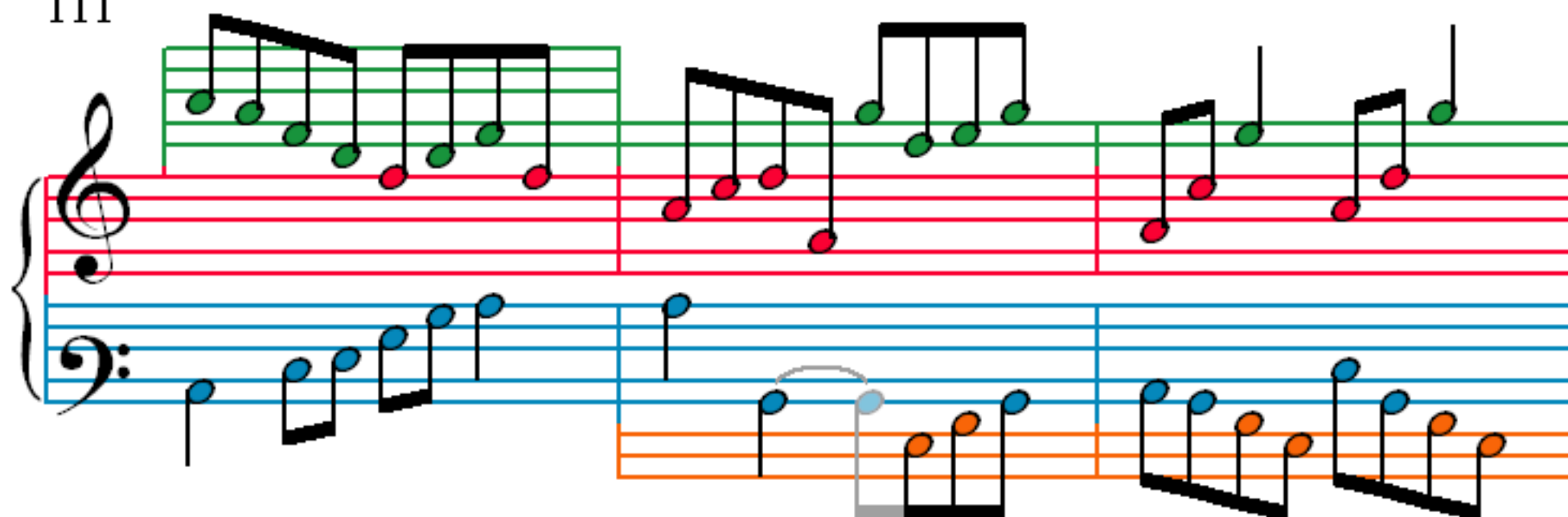
102

105

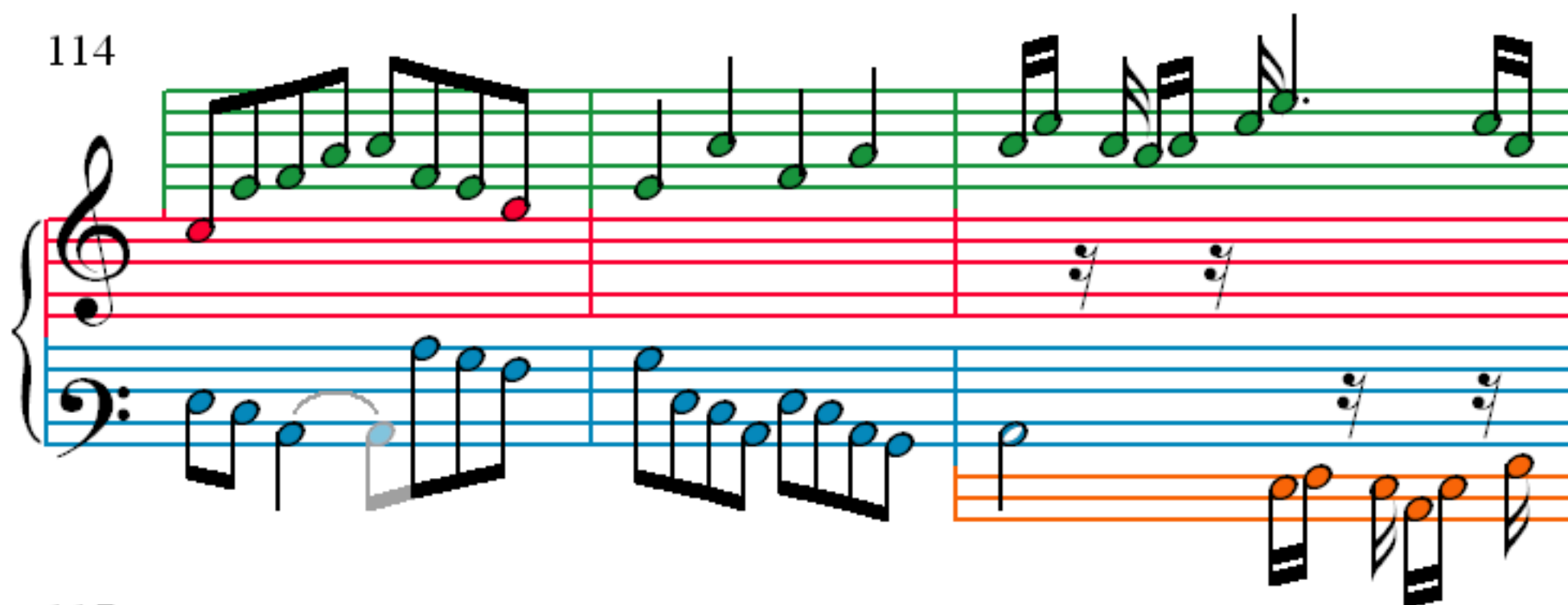
108



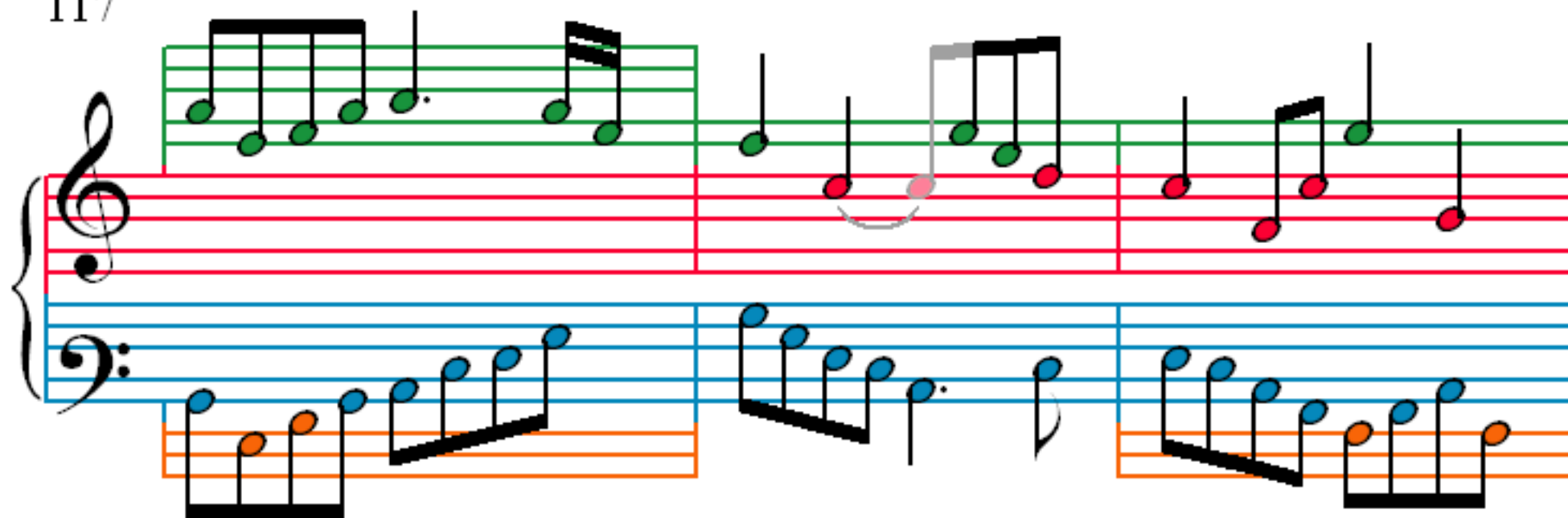
111



114



117



120

Measures 120-122 of a musical score. The system consists of a grand staff with a treble clef and a bass clef. The treble staff has a red line and a green line. The bass staff has a blue line and an orange line. The notes are colored: red for the treble staff and blue for the bass staff. Measure 120 shows a half note in the treble and a half note in the bass. Measure 121 shows a half note in the treble and a half note in the bass. Measure 122 shows a half note in the treble and a half note in the bass.

123

Measures 123-125 of a musical score. The system consists of a grand staff with a treble clef and a bass clef. The treble staff has a red line and a green line. The bass staff has a blue line and an orange line. The notes are colored: red for the treble staff and blue for the bass staff. Measure 123 shows a half note in the treble and a half note in the bass. Measure 124 shows a half note in the treble and a half note in the bass. Measure 125 shows a half note in the treble and a half note in the bass.

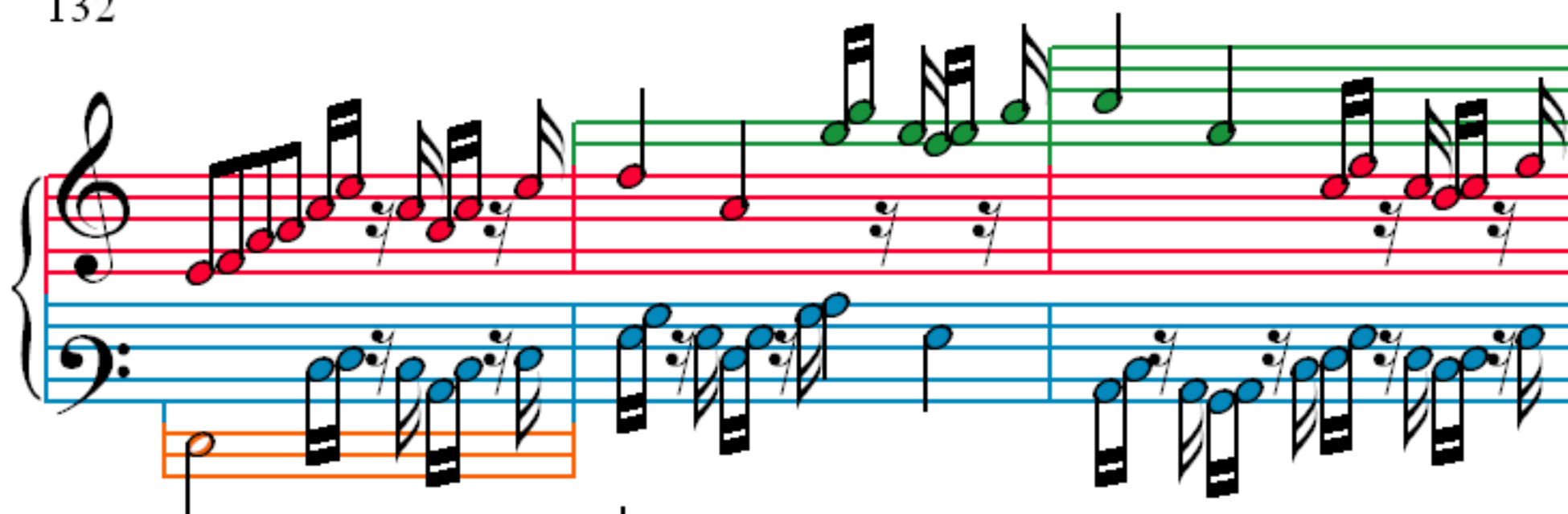
126

Measures 126-128 of a musical score. The system consists of a grand staff with a treble clef and a bass clef. The treble staff has a red line and a green line. The bass staff has a blue line and an orange line. The notes are colored: red for the treble staff and blue for the bass staff. Measure 126 shows a half note in the treble and a half note in the bass. Measure 127 shows a half note in the treble and a half note in the bass. Measure 128 shows a half note in the treble and a half note in the bass.

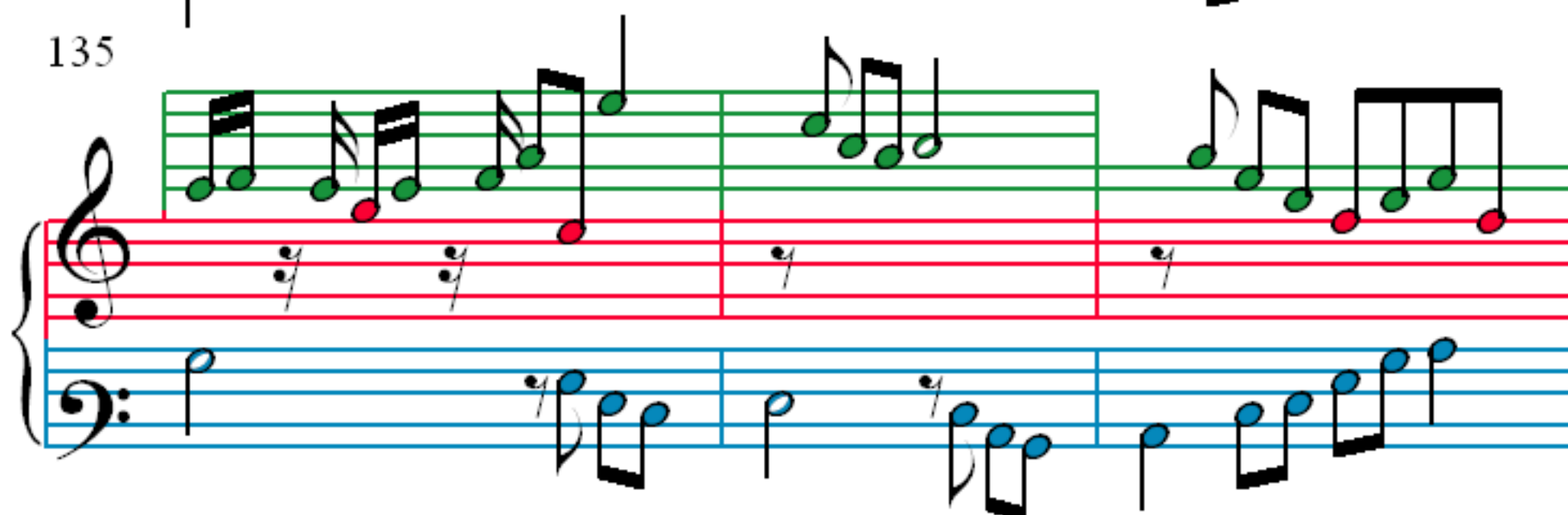
129

Measures 129-131 of a musical score. The system consists of a grand staff with a treble clef and a bass clef. The treble staff has a red line and a green line. The bass staff has a blue line and an orange line. The notes are colored: red for the treble staff and blue for the bass staff. Measure 129 shows a half note in the treble and a half note in the bass. Measure 130 shows a half note in the treble and a half note in the bass. Measure 131 shows a half note in the treble and a half note in the bass.

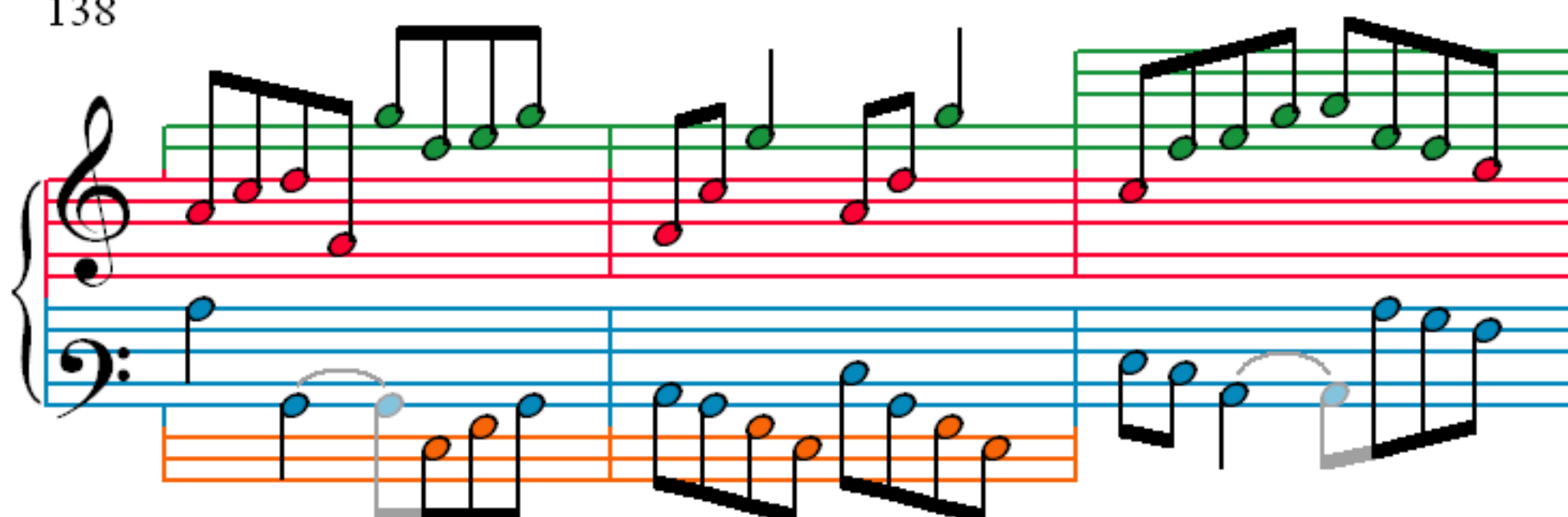
132



135



138



141

