

Violin Sonata No. 9 in A Minor

1st Movement: Adagio sostenuto - Presto - Adagio

L. V. Beethoven (1770–1827)

1

4

7

10

13

16

20

24

Measures 27-30 of the Violin Sonata No. 9 in A Minor. The notation is presented in a grand staff with three systems. The first system (measures 27-28) features a treble clef with a melody of eighth notes and a bass clef with a simple accompaniment. The second system (measures 29-30) continues the melody and accompaniment. The notes are color-coded: red for the main melody, green for the accompaniment, and blue for the bass line. The staves are color-coded: red for the treble, blue for the bass, and orange for the accompaniment.

Measures 31-33 of the Violin Sonata No. 9 in A Minor. The notation is presented in a grand staff with three systems. The first system (measures 31-32) features a treble clef with a melody of eighth notes and a bass clef with a simple accompaniment. The second system (measure 33) continues the melody and accompaniment. The notes are color-coded: red for the main melody, green for the accompaniment, and blue for the bass line. The staves are color-coded: red for the treble, blue for the bass, and orange for the accompaniment.

Measures 34-35 of the Violin Sonata No. 9 in A Minor. The notation is presented in a grand staff with three systems. The first system (measures 34-35) features a treble clef with a melody of eighth notes and a bass clef with a simple accompaniment. The second system (measures 36-37) continues the melody and accompaniment. The notes are color-coded: red for the main melody, green for the accompaniment, and blue for the bass line. The staves are color-coded: red for the treble, blue for the bass, and orange for the accompaniment.

Measures 36-39 of the Violin Sonata No. 9 in A Minor. The notation is presented in a grand staff with three systems. The first system (measures 36-37) features a treble clef with a melody of eighth notes and a bass clef with a simple accompaniment. The second system (measures 38-39) continues the melody and accompaniment. The notes are color-coded: red for the main melody, green for the accompaniment, and blue for the bass line. The staves are color-coded: red for the treble, blue for the bass, and orange for the accompaniment.

[illegible]

50

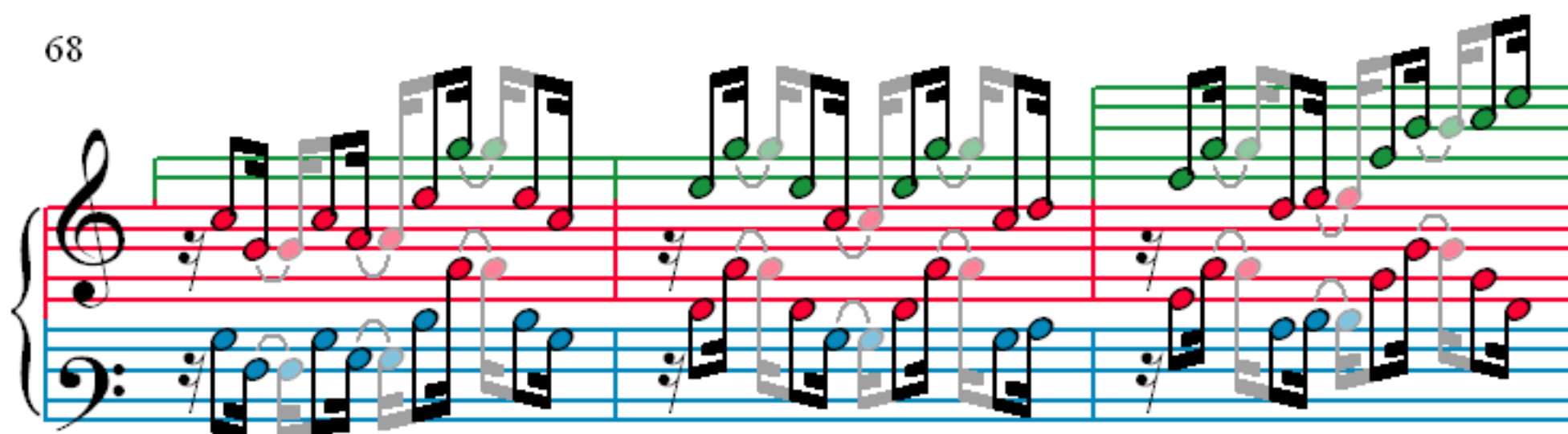
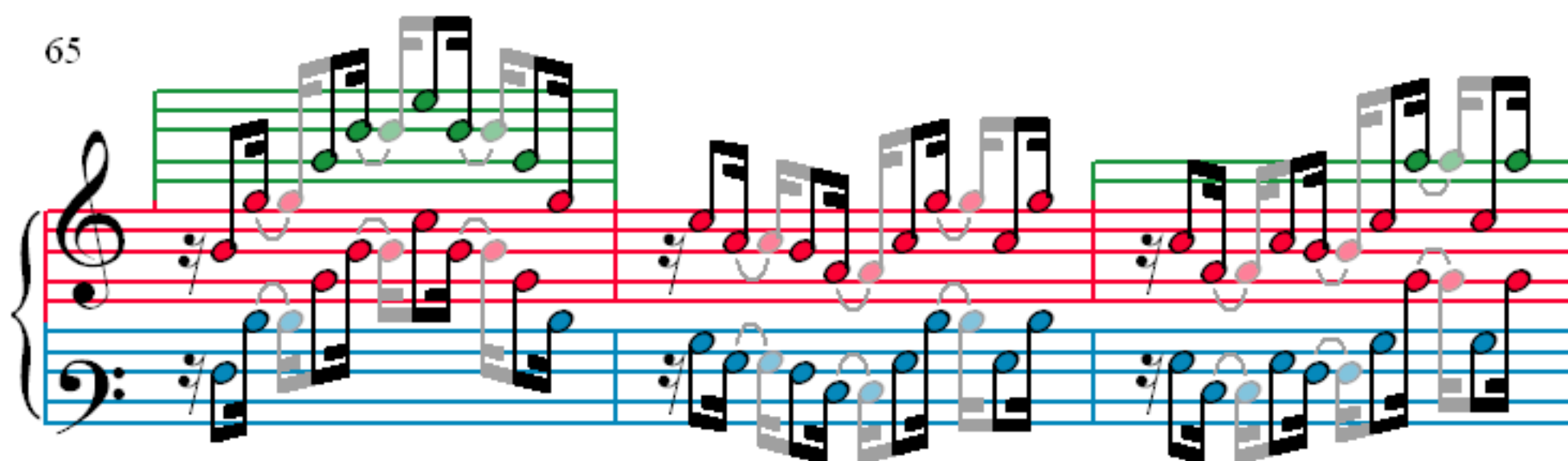
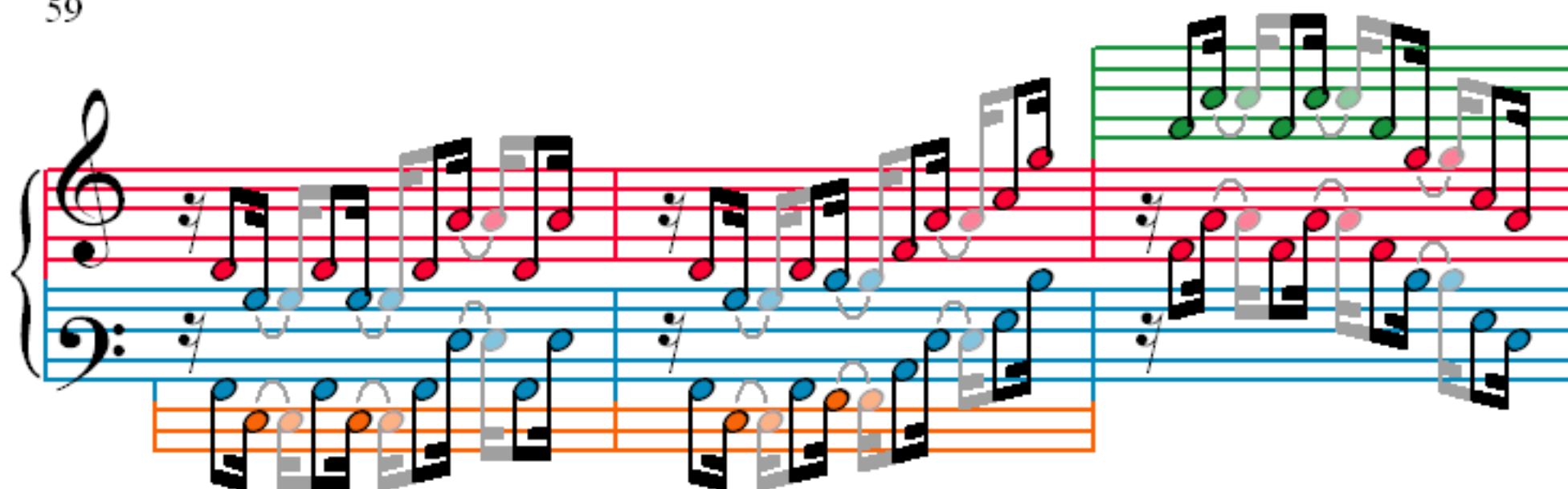
Measures 50-52: This system contains measures 50, 51, and 52. The notation is dense with many beamed eighth and sixteenth notes across all staves. The top staff features purple notes, the middle staff has red notes, and the bottom staff has orange notes. The music is in a minor key, indicated by the flat signs on the notes.

53

Measures 53-55: This system contains measures 53, 54, and 55. The notation continues with complex melodic lines. Measures 53 and 54 show a transition in the top staff, while measure 55 features a more active bass line. The bottom staff continues with its characteristic orange notes and complex rhythms.

56

Measures 56-58: This system contains measures 56, 57, and 58. The notation shows a continuation of the complex melodic lines. Measure 56 has a prominent purple note in the top staff. Measures 57 and 58 show a more active bass line with many beamed notes. The bottom staff continues with its characteristic orange notes and complex rhythms.



71

74

77

80

83

86

89

92

95

99

103

107

111

115

118

120

123

Measures 123-125. The score is written for piano (p) and features a complex texture with multiple staves. The top staff (treble clef) contains a melodic line with many accidentals and ties. The middle staves (treble and bass clefs) contain a dense, rhythmic accompaniment. The bottom staff (bass clef) contains a melodic line with many accidentals and ties. The measures are grouped by vertical bar lines.

126

Measures 126-128. The score continues with the same complex texture. The top staff (treble clef) contains a melodic line with many accidentals and ties. The middle staves (treble and bass clefs) contain a dense, rhythmic accompaniment. The bottom staff (bass clef) contains a melodic line with many accidentals and ties. The measures are grouped by vertical bar lines.

129

Measures 129-131. The score continues with the same complex texture. The top staff (treble clef) contains a melodic line with many accidentals and ties. The middle staves (treble and bass clefs) contain a dense, rhythmic accompaniment. The bottom staff (bass clef) contains a melodic line with many accidentals and ties. The measures are grouped by vertical bar lines.

132

Measures 132-134. The score continues with the same complex texture. The top staff (treble clef) contains a melodic line with many accidentals and ties. The middle staves (treble and bass clefs) contain a dense, rhythmic accompaniment. The bottom staff (bass clef) contains a melodic line with many accidentals and ties. The measures are grouped by vertical bar lines.

135

Measures 135-137 of the Violin Sonata No. 9 in A Minor. The system consists of three staves. The top staff is a single treble clef staff with a purple background. The middle and bottom staves are a grand staff (treble and bass clefs) with a red background. The music features a complex rhythmic pattern with many beamed sixteenth and thirty-second notes. The notes are color-coded: purple for the top staff, red for the middle staff, and blue for the bottom staff. Some notes are highlighted in green or orange.

138

Measures 138-139. The system consists of three staves. The top staff is a single treble clef staff with a green background. The middle and bottom staves are a grand staff with a red background. The music continues with the same complex rhythmic pattern. The notes are color-coded: green for the top staff, red for the middle staff, and blue for the bottom staff. Some notes are highlighted in orange or pink.

140

Measures 140-141. The system consists of three staves. The top staff is a single treble clef staff with a red background. The middle and bottom staves are a grand staff with a blue background. The music continues with the same complex rhythmic pattern. The notes are color-coded: red for the top staff, blue for the middle staff, and orange for the bottom staff. Some notes are highlighted in pink or green.

142

Measures 142-143. The system consists of three staves. The top staff is a single treble clef staff with a green background. The middle and bottom staves are a grand staff with a blue background. The music continues with the same complex rhythmic pattern. The notes are color-coded: green for the top staff, blue for the middle staff, and orange for the bottom staff. Some notes are highlighted in pink or red.

144

Measures 144-146 of the Violin Sonata No. 9 in A Minor. The notation is presented in a system with three staves: a top staff (treble clef), a middle staff (treble clef), and a bottom staff (bass clef). The music features a complex rhythmic pattern with many beamed sixteenth and thirty-second notes. The notes are color-coded: green for the top staff, red for the middle staff, and blue for the bottom staff. The system is divided into three measures by vertical bar lines.

147

Measures 147-149 of the Violin Sonata No. 9 in A Minor. The notation continues on the same three-staff system. The rhythmic complexity is maintained with beamed notes. The color-coding remains consistent: green for the top staff, red for the middle staff, and blue for the bottom staff. The system is divided into three measures.

150

Measures 150-152 of the Violin Sonata No. 9 in A Minor. The notation continues on the same three-staff system. The rhythmic complexity is maintained with beamed notes. The color-coding remains consistent: green for the top staff, red for the middle staff, and blue for the bottom staff. The system is divided into three measures.

153

Measures 153-155 of the Violin Sonata No. 9 in A Minor. The notation continues on the same three-staff system. The rhythmic complexity is maintained with beamed notes. The color-coding remains consistent: green for the top staff, red for the middle staff, and blue for the bottom staff. The system is divided into three measures.

156

159

162

165

168

Measures 168-170 of the Violin Sonata No. 9 in A Minor. The score is written for piano (p) and features a complex texture with multiple staves. The top staff (treble clef) contains a melodic line with eighth and sixteenth notes, often beamed together. The middle staff (treble clef) contains a similar melodic line, sometimes in octaves with the top staff. The bottom staff (bass clef) contains a bass line with eighth and sixteenth notes, often beamed together. The music is in A minor, indicated by the key signature of one flat (B-flat) and the presence of natural signs on the F and C notes in the bass line. The tempo is marked 'Allegretto'.

171

Measures 171-173 of the Violin Sonata No. 9 in A Minor. The score continues the complex texture from the previous measures. The top staff (treble clef) contains a melodic line with eighth and sixteenth notes, often beamed together. The middle staff (treble clef) contains a similar melodic line, sometimes in octaves with the top staff. The bottom staff (bass clef) contains a bass line with eighth and sixteenth notes, often beamed together. The music is in A minor, indicated by the key signature of one flat (B-flat) and the presence of natural signs on the F and C notes in the bass line. The tempo is marked 'Allegretto'.

174

Measures 174-176 of the Violin Sonata No. 9 in A Minor. The score continues the complex texture from the previous measures. The top staff (treble clef) contains a melodic line with eighth and sixteenth notes, often beamed together. The middle staff (treble clef) contains a similar melodic line, sometimes in octaves with the top staff. The bottom staff (bass clef) contains a bass line with eighth and sixteenth notes, often beamed together. The music is in A minor, indicated by the key signature of one flat (B-flat) and the presence of natural signs on the F and C notes in the bass line. The tempo is marked 'Allegretto'.

177

180

184

188

192

195

198

201

204

207

209

211

214

217

220

223

Measures 223-226 of the Violin Sonata No. 9 in A Minor. The score is written for piano (p) and features a treble and bass staff. The treble staff has a green staff line and a red staff line. The bass staff has a blue staff line and an orange staff line. The music consists of a series of eighth notes and quarter notes, with some measures containing rests. The notes are color-coded: green for the treble staff and blue for the bass staff. The first measure of the system (223) shows a treble staff with a quarter note and a bass staff with a quarter note. The second measure (224) shows a treble staff with a quarter note and a bass staff with a quarter note. The third measure (225) shows a treble staff with a quarter note and a bass staff with a quarter note. The fourth measure (226) shows a treble staff with a quarter note and a bass staff with a quarter note.

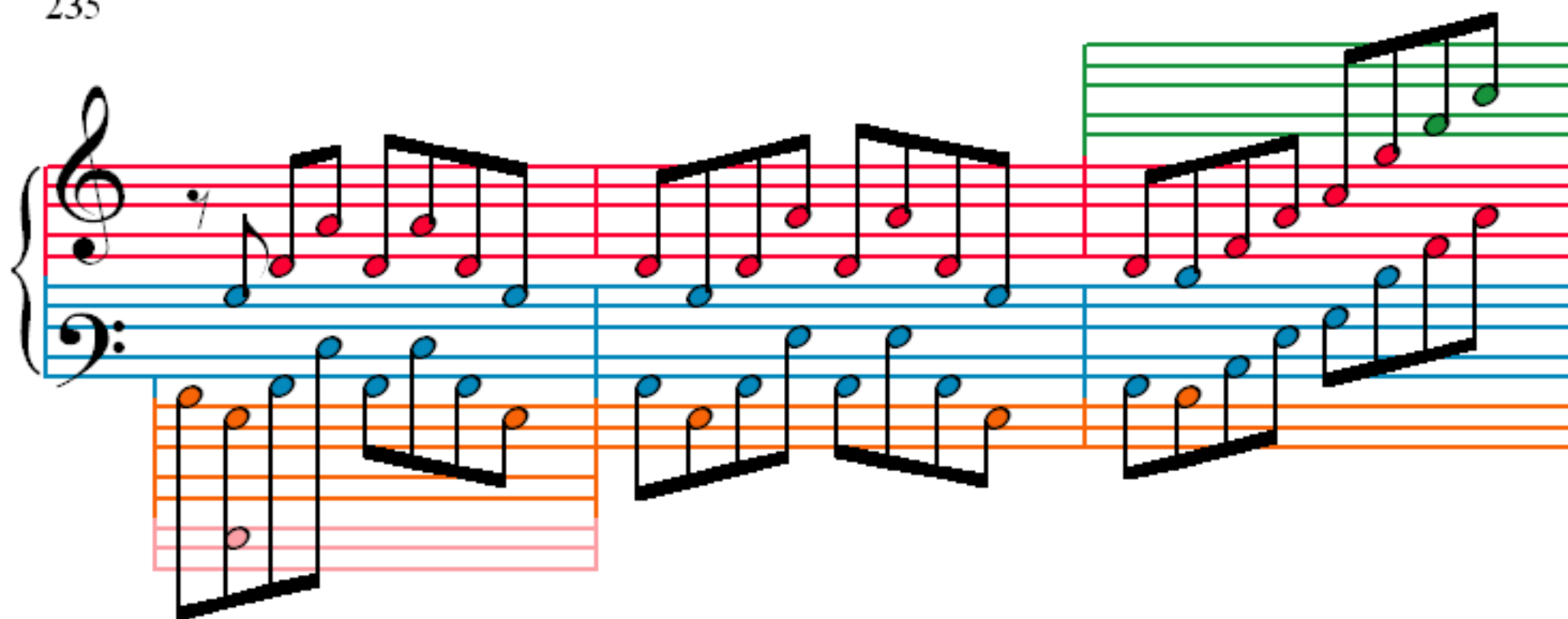
227

Measures 227-230 of the Violin Sonata No. 9 in A Minor. The score is written for piano (p) and features a treble and bass staff. The treble staff has a green staff line and a red staff line. The bass staff has a blue staff line and an orange staff line. The music consists of a series of eighth notes and quarter notes, with some measures containing rests. The notes are color-coded: green for the treble staff and blue for the bass staff. The first measure of the system (227) shows a treble staff with a quarter note and a bass staff with a quarter note. The second measure (228) shows a treble staff with a quarter note and a bass staff with a quarter note. The third measure (229) shows a treble staff with a quarter note and a bass staff with a quarter note. The fourth measure (230) shows a treble staff with a quarter note and a bass staff with a quarter note.

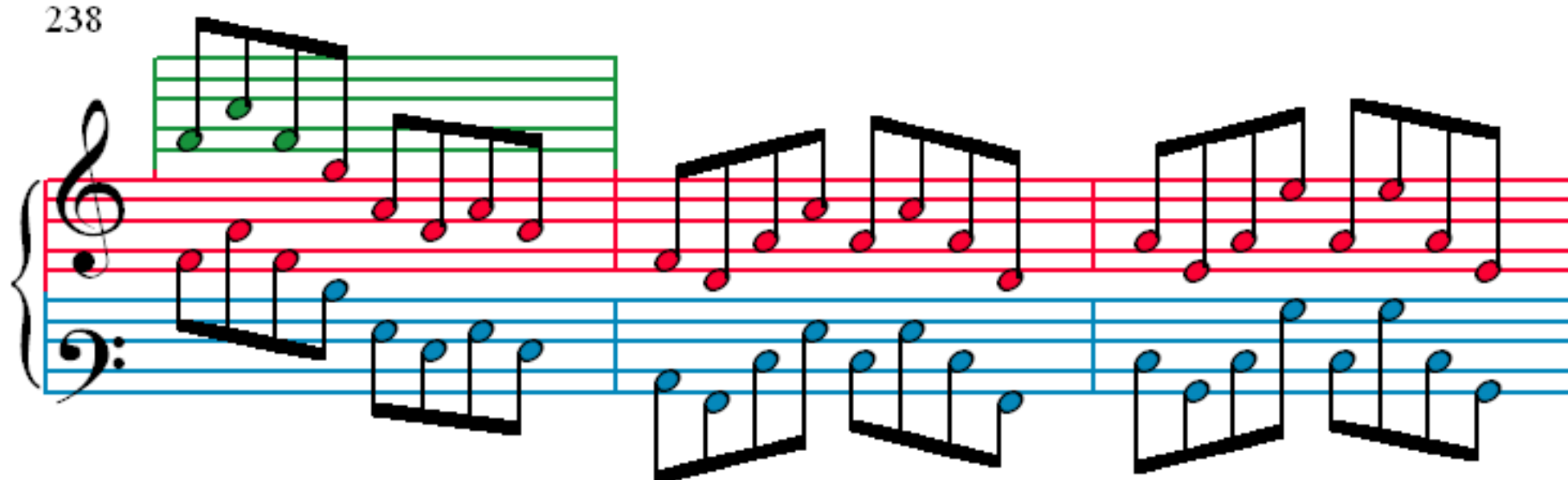
231

Measures 231-234 of the Violin Sonata No. 9 in A Minor. The score is written for piano (p) and features a treble and bass staff. The treble staff has a green staff line and a red staff line. The bass staff has a blue staff line and an orange staff line. The music consists of a series of eighth notes and quarter notes, with some measures containing rests. The notes are color-coded: green for the treble staff and blue for the bass staff. The first measure of the system (231) shows a treble staff with a quarter note and a bass staff with a quarter note. The second measure (232) shows a treble staff with a quarter note and a bass staff with a quarter note. The third measure (233) shows a treble staff with a quarter note and a bass staff with a quarter note. The fourth measure (234) shows a treble staff with a quarter note and a bass staff with a quarter note.

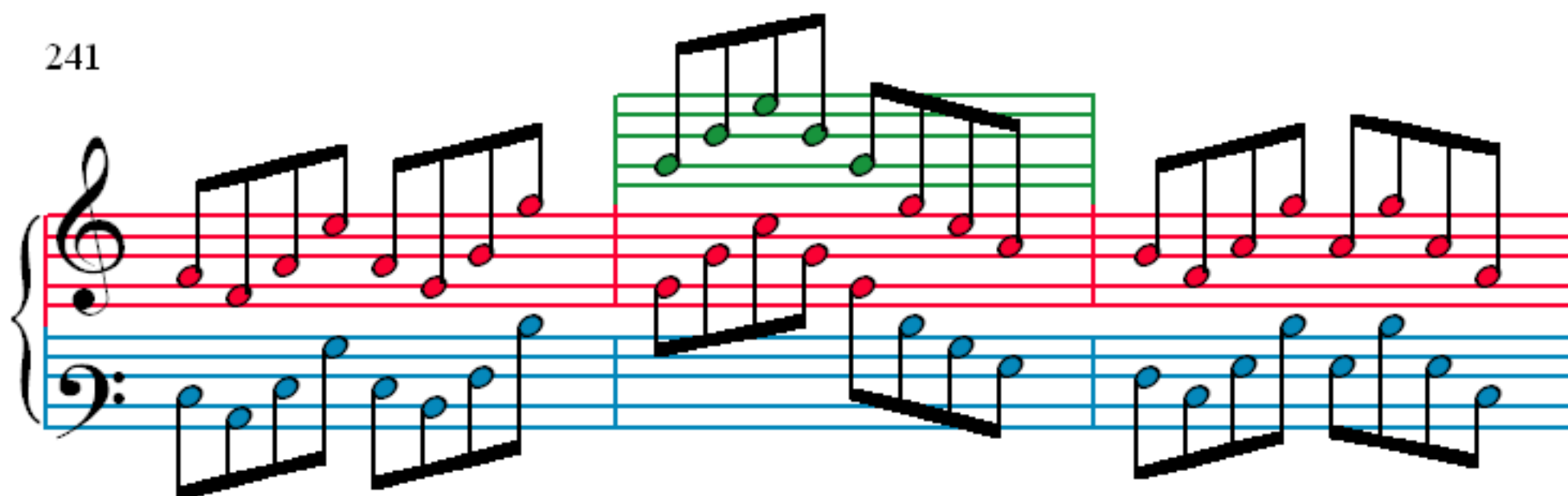
235



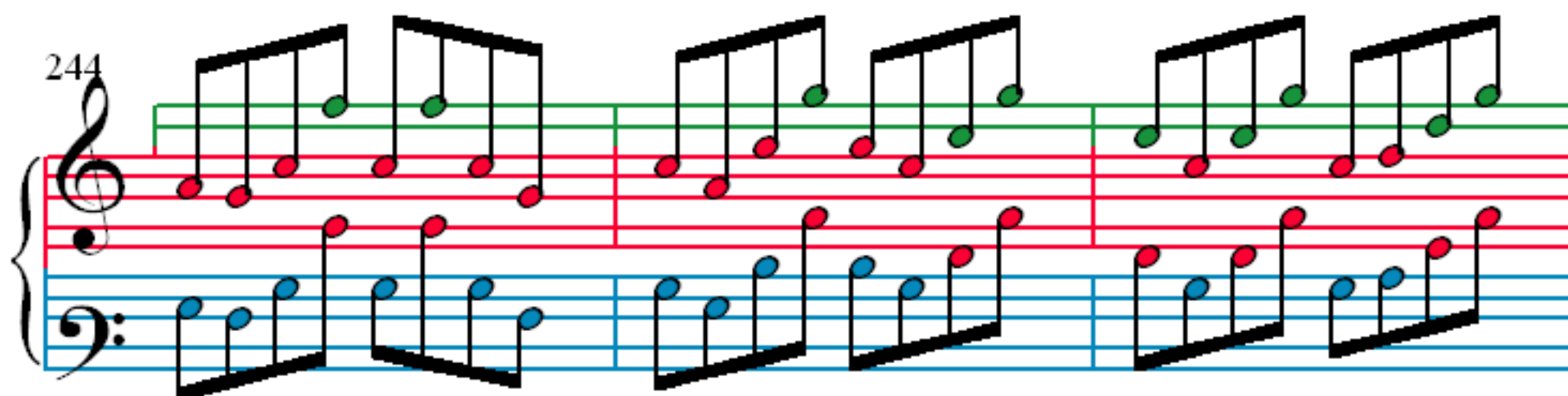
238



241



244



247

Measures 247-249. Measure 247: Treble clef has a green line with eighth notes; Bass clef has blue notes. Measure 248: Treble clef has a green line with eighth notes; Bass clef has blue notes. Measure 249: Treble clef has a green line with eighth notes; Bass clef has blue notes and an orange line with notes.

250

Measures 250-252. Measure 250: Treble clef has a green line with eighth notes; Bass clef has blue notes and an orange line with notes. Measure 251: Treble clef has a green line with eighth notes; Bass clef has blue notes and an orange line with notes. Measure 252: Treble clef has a green line with eighth notes; Bass clef has blue notes and an orange line with notes.

253

Measures 253-255. Measure 253: Treble clef has a green line with eighth notes; Bass clef has blue notes and an orange line with notes. Measure 254: Treble clef has a green line with eighth notes; Bass clef has blue notes and an orange line with notes. Measure 255: Treble clef has a green line with eighth notes; Bass clef has blue notes and an orange line with notes.

256

Measures 256-259. Measure 256: Treble clef has a green line with eighth notes; Bass clef has blue notes and an orange line with notes. Measure 257: Treble clef has a green line with eighth notes; Bass clef has blue notes and an orange line with notes. Measure 258: Treble clef has a green line with eighth notes; Bass clef has blue notes and an orange line with notes. Measure 259: Treble clef has a green line with eighth notes; Bass clef has blue notes and an orange line with notes.

260

Measures 260-262. Measure 260: Treble clef has a whole rest; Bass clef has a whole note chord (F4, A4). Measure 261: Treble clef has a whole rest; Bass clef has a whole note chord (F4, A4). Measure 262: Treble clef has a whole note chord (F4, A4); Bass clef has a whole note chord (F4, A4).

263

Measures 263-265. Measure 263: Treble clef has a whole note chord (F4, A4); Bass clef has a whole note chord (F4, A4). Measure 264: Treble clef has a whole rest; Bass clef has a whole note chord (F4, A4). Measure 265: Treble clef has a whole note chord (F4, A4); Bass clef has a whole note chord (F4, A4).

266

Measures 266-268. Measure 266: Treble clef has a whole note chord (F4, A4); Bass clef has a whole note chord (F4, A4). Measure 267: Treble clef has a whole note chord (F4, A4); Bass clef has a whole note chord (F4, A4). Measure 268: Treble clef has a whole note chord (F4, A4); Bass clef has a whole note chord (F4, A4).

269

Measures 269-271. Measure 269: Treble clef has a whole note chord (F4, A4); Bass clef has a whole note chord (F4, A4). Measure 270: Treble clef has a whole note chord (F4, A4); Bass clef has a whole note chord (F4, A4). Measure 271: Treble clef has a whole note chord (F4, A4); Bass clef has a whole note chord (F4, A4).

272

275

278

281

284

Measures 284-286. Treble clef: Green notes (D4, E4, F4, G4, A4, B4, C5). Bass clef: Blue notes (D3, E3, F3, G3, A3, B3, C4). Red lines connect corresponding notes between staves.

287

Measures 287-289. Treble clef: Green notes (D4, E4, F4, G4, A4, B4, C5). Bass clef: Blue notes (D3, E3, F3, G3, A3, B3, C4). Red lines connect corresponding notes between staves.

290

Measures 290-292. Treble clef: Green notes (D4, E4, F4, G4, A4, B4, C5). Bass clef: Blue notes (D3, E3, F3, G3, A3, B3, C4). Red lines connect corresponding notes between staves.

293

Measures 293-295. Treble clef: Green notes (D4, E4, F4, G4, A4, B4, C5). Bass clef: Blue notes (D3, E3, F3, G3, A3, B3, C4). Red lines connect corresponding notes between staves.

296

Measures 296-299 of the Violin Sonata No. 9 in A Minor. The system consists of a grand staff with a treble and bass clef. The treble staff has a red line and a green line. The bass staff has a blue line and an orange line. The music features a series of eighth-note chords in the treble and a corresponding eighth-note pattern in the bass. The notes are color-coded: red for the treble and blue for the bass. The system is divided into four measures.

300

Measures 300-302 of the Violin Sonata No. 9 in A Minor. The system consists of a grand staff with a treble and bass clef. The treble staff has a red line and a green line. The bass staff has a blue line and an orange line. The music features a series of eighth-note chords in the treble and a corresponding eighth-note pattern in the bass. The notes are color-coded: red for the treble and blue for the bass. The system is divided into three measures.

303

Measures 303-305 of the Violin Sonata No. 9 in A Minor. The system consists of a grand staff with a treble and bass clef. The treble staff has a red line and a green line. The bass staff has a blue line and an orange line. The music features a series of eighth-note chords in the treble and a corresponding eighth-note pattern in the bass. The notes are color-coded: red for the treble and blue for the bass. The system is divided into three measures.

306

Measures 306-308 of the Violin Sonata No. 9 in A Minor. The system consists of a grand staff with a treble and bass clef. The treble staff has a red line and a green line. The bass staff has a blue line and an orange line. The music features a series of eighth-note chords in the treble and a corresponding eighth-note pattern in the bass. The notes are color-coded: red for the treble and blue for the bass. The system is divided into three measures.

321

Measures 321-323. Treble clef: measures 321-322 have a melodic line with slurs and ties, measure 323 has a single note with a slur. Bass clef: measures 321-322 have a supporting line with slurs, measure 323 has a single note with a slur. A third staff at the bottom shows a single note with a slur.

324

Measures 324-326. Treble clef: measures 324-325 have a melodic line with slurs and ties, measure 326 has a single note with a slur. Bass clef: measures 324-325 have a supporting line with slurs, measure 326 has a single note with a slur. A third staff at the bottom shows a single note with a slur.

327

Measures 327-329. Treble clef: measures 327-328 have a melodic line with slurs and ties, measure 329 has a single note with a slur. Bass clef: measures 327-328 have a supporting line with slurs, measure 329 has a single note with a slur. A third staff at the bottom shows a single note with a slur.

330

Measures 330-332. Treble clef: measures 330-331 have a melodic line with slurs and ties, measure 332 has a single note with a slur. Bass clef: measures 330-331 have a supporting line with slurs, measure 332 has a single note with a slur. A third staff at the bottom shows a single note with a slur.

333

336

339

342

345

Measures 345-348 of the Violin Sonata No. 9 in A Minor. The score is written for piano (p) and features a complex texture with multiple staves. The top staff (treble clef) contains a melodic line with green and red notes. The middle staff (treble clef) contains a melodic line with red notes. The bottom staff (bass clef) contains a melodic line with blue notes. The piano part is written on a grand staff (treble and bass clefs) with orange and pink notes. The music is in 4/4 time and features a variety of rhythmic patterns, including eighth and sixteenth notes, and rests.

349

Measures 349-352 of the Violin Sonata No. 9 in A Minor. The score continues the complex texture from the previous system. The top staff (treble clef) contains a melodic line with green and red notes. The middle staff (treble clef) contains a melodic line with red notes. The bottom staff (bass clef) contains a melodic line with blue notes. The piano part is written on a grand staff (treble and bass clefs) with orange and pink notes. The music is in 4/4 time and features a variety of rhythmic patterns, including eighth and sixteenth notes, and rests.

353

Measures 353-356 of the Violin Sonata No. 9 in A Minor. The score continues the complex texture from the previous system. The top staff (treble clef) contains a melodic line with green and red notes. The middle staff (treble clef) contains a melodic line with red notes. The bottom staff (bass clef) contains a melodic line with blue notes. The piano part is written on a grand staff (treble and bass clefs) with orange and pink notes. The music is in 4/4 time and features a variety of rhythmic patterns, including eighth and sixteenth notes, and rests.

357

361

365

System 1 (Measures 369-372): The right hand (treble clef) features a melodic line with eighth and sixteenth notes, accented in measures 369 and 370. The left hand (bass clef) provides a harmonic accompaniment with chords and moving lines. A third staff, highlighted in orange, contains a single note in measures 369 and 370.

373

System 2 (Measures 373-376): The right hand continues the melodic development. The left hand accompaniment becomes more active with sixteenth-note patterns. The orange staff continues with a single note in measures 373 and 374.

377

System 3 (Measures 377-379): The right hand features a series of ascending eighth-note runs. The left hand accompaniment consists of chords and moving lines. The orange staff contains a single note in measures 377 and 378.

380

System 4 (Measures 380-383): The right hand continues with ascending eighth-note runs. The left hand accompaniment is more complex, featuring sixteenth-note patterns. The orange staff contains a single note in measures 380 and 381.

383

387

391

395

398

401

404

407

Measures 407-409 of a musical score. Measure 407 features a treble staff with a sequence of eighth notes (red, green, red, green, red, green, red, green) and a bass staff with a sequence of eighth notes (blue, blue, blue, blue, blue, blue, blue, blue). Measure 408 shows a treble staff with a sequence of eighth notes (green, green, green, green, green, green, green, green) and a bass staff with a sequence of eighth notes (blue, blue, blue, blue, blue, blue, blue, blue). Measure 409 shows a treble staff with a sequence of eighth notes (green, green, green, green, green, green, green, green) and a bass staff with a sequence of eighth notes (blue, blue, blue, blue, blue, blue, blue, blue). The notation is color-coded: red for treble staff notes, blue for bass staff notes, green for treble staff notes, and orange for bass staff notes.

410

Measures 410-412 of a musical score. Measure 410 features a treble staff with a sequence of eighth notes (green, green, green, green, green, green, green, green) and a bass staff with a sequence of eighth notes (blue, blue, blue, blue, blue, blue, blue, blue). Measure 411 shows a treble staff with a sequence of eighth notes (green, green, green, green, green, green, green, green) and a bass staff with a sequence of eighth notes (blue, blue, blue, blue, blue, blue, blue, blue). Measure 412 shows a treble staff with a sequence of eighth notes (green, green, green, green, green, green, green, green) and a bass staff with a sequence of eighth notes (blue, blue, blue, blue, blue, blue, blue, blue). The notation is color-coded: red for treble staff notes, blue for bass staff notes, green for treble staff notes, and orange for bass staff notes.

413

Measures 413-415 of a musical score. Measure 413 features a treble staff with a sequence of eighth notes (red, red, red, red, red, red, red, red) and a bass staff with a sequence of eighth notes (blue, blue, blue, blue, blue, blue, blue, blue). Measure 414 shows a treble staff with a sequence of eighth notes (red, red, red, red, red, red, red, red) and a bass staff with a sequence of eighth notes (blue, blue, blue, blue, blue, blue, blue, blue). Measure 415 shows a treble staff with a sequence of eighth notes (red, red, red, red, red, red, red, red) and a bass staff with a sequence of eighth notes (blue, blue, blue, blue, blue, blue, blue, blue). The notation is color-coded: red for treble staff notes, blue for bass staff notes, green for treble staff notes, and orange for bass staff notes.

416

Measures 416-418 of a musical score. Measure 416 features a treble staff with a sequence of eighth notes (green, green, green, green, green, green, green, green) and a bass staff with a sequence of eighth notes (blue, blue, blue, blue, blue, blue, blue, blue). Measure 417 shows a treble staff with a sequence of eighth notes (green, green, green, green, green, green, green, green) and a bass staff with a sequence of eighth notes (blue, blue, blue, blue, blue, blue, blue, blue). Measure 418 shows a treble staff with a sequence of eighth notes (green, green, green, green, green, green, green, green) and a bass staff with a sequence of eighth notes (blue, blue, blue, blue, blue, blue, blue, blue). The notation is color-coded: red for treble staff notes, blue for bass staff notes, green for treble staff notes, and orange for bass staff notes.

Measures 419-422 of the Violin Sonata No. 9 in A Minor. The notation is presented in a grand staff with treble and bass clefs. The treble staff features a series of eighth notes in the first measure, followed by a half note in the second measure, and a quarter note in the third measure. The bass staff features a series of eighth notes in the first measure, followed by a half note in the second measure, and a quarter note in the third measure. The notation is color-coded: red for the first measure, blue for the second, and green for the third. The fourth measure is a repeat of the first measure.

Measures 423-426 of the Violin Sonata No. 9 in A Minor. The notation is presented in a grand staff with treble and bass clefs. The treble staff features a series of eighth notes in the first measure, followed by a half note in the second measure, and a quarter note in the third measure. The bass staff features a series of eighth notes in the first measure, followed by a half note in the second measure, and a quarter note in the third measure. The notation is color-coded: red for the first measure, blue for the second, and green for the third. The fourth measure is a repeat of the first measure.

Measures 427-430 of the Violin Sonata No. 9 in A Minor. The notation is presented in a grand staff with treble and bass clefs. The treble staff features a series of eighth notes in the first measure, followed by a half note in the second measure, and a quarter note in the third measure. The bass staff features a series of eighth notes in the first measure, followed by a half note in the second measure, and a quarter note in the third measure. The notation is color-coded: red for the first measure, blue for the second, and green for the third. The fourth measure is a repeat of the first measure.

431

434

437

440

443

446

449

452

455

458

461

464

467

470

474

477

Measures 480-482 of a musical score. The system consists of four staves. The top staff (treble clef) has a green background and contains a melodic line with eighth and sixteenth notes, some beamed together. The second staff (treble clef) has a red background and contains a similar melodic line. The third staff (bass clef) has a blue background and contains a bass line with eighth notes and rests. The fourth staff (bass clef) has an orange background and contains a bass line with eighth notes and rests. The measures are separated by vertical bar lines.

Measures 483-484 of a musical score. The system consists of two staves. The top staff (treble clef) has a green background and contains a melodic line with eighth notes. The bottom staff (bass clef) has a blue background and contains a bass line with eighth notes and rests. The measures are separated by vertical bar lines.

Measures 485-486 of a musical score. The system consists of two staves. The top staff (treble clef) has a red background and contains a melodic line with eighth notes. The bottom staff (bass clef) has a blue background and contains a bass line with eighth notes and rests. The measures are separated by vertical bar lines.

Measures 487-489 of a musical score. The system consists of four staves. The top staff (treble clef) has a green background and contains a melodic line with eighth notes. The second staff (treble clef) has a red background and contains a melodic line with eighth notes. The third staff (bass clef) has a blue background and contains a bass line with eighth notes and rests. The fourth staff (bass clef) has an orange background and contains a bass line with eighth notes and rests. The measures are separated by vertical bar lines.

490

494

497

501

504

507

510

514

518

521

524

527

531

Measures 531-534 of the Violin Sonata No. 9 in A Minor. The score is written for piano (p) and features a complex texture with multiple staves. The piano part is in the upper system, with a treble clef staff and a bass clef staff. The violin part is in the lower system, with a treble clef staff and a bass clef staff. The music is in A minor and 3/4 time. The piano part features a series of chords and arpeggios, while the violin part features a series of eighth notes and sixteenth notes. The score is color-coded with green, red, blue, and orange lines.

535

Measures 535-537 of the Violin Sonata No. 9 in A Minor. The score is written for piano (p) and features a complex texture with multiple staves. The piano part is in the upper system, with a treble clef staff and a bass clef staff. The violin part is in the lower system, with a treble clef staff and a bass clef staff. The music is in A minor and 3/4 time. The piano part features a series of chords and arpeggios, while the violin part features a series of eighth notes and sixteenth notes. The score is color-coded with green, red, blue, and orange lines.

538

Measures 538-540 of the Violin Sonata No. 9 in A Minor. The score is written for piano (p) and features a complex texture with multiple staves. The piano part is in the upper system, with a treble clef staff and a bass clef staff. The violin part is in the lower system, with a treble clef staff and a bass clef staff. The music is in A minor and 3/4 time. The piano part features a series of chords and arpeggios, while the violin part features a series of eighth notes and sixteenth notes. The score is color-coded with green, red, blue, and orange lines.

541

Measures 541-544 of the Violin Sonata No. 9 in A Minor. The score is written for piano (p) and features a complex texture with multiple staves. The piano part is in the upper system, with a treble clef staff and a bass clef staff. The violin part is in the lower system, with a treble clef staff and a bass clef staff. The music is in A minor and 3/4 time. The piano part features a series of chords and arpeggios, while the violin part features a series of eighth notes and sixteenth notes. The score is color-coded with green, red, blue, and orange lines.

544

Measures 544-547 of the Violin Sonata No. 9 in A Minor. The score is written for piano (p) and features a complex texture with multiple staves. The right hand (treble clef) plays a series of eighth notes in the upper register, while the left hand (bass clef) plays a series of eighth notes in the lower register. The music is characterized by a high level of chromaticism and a fast tempo.

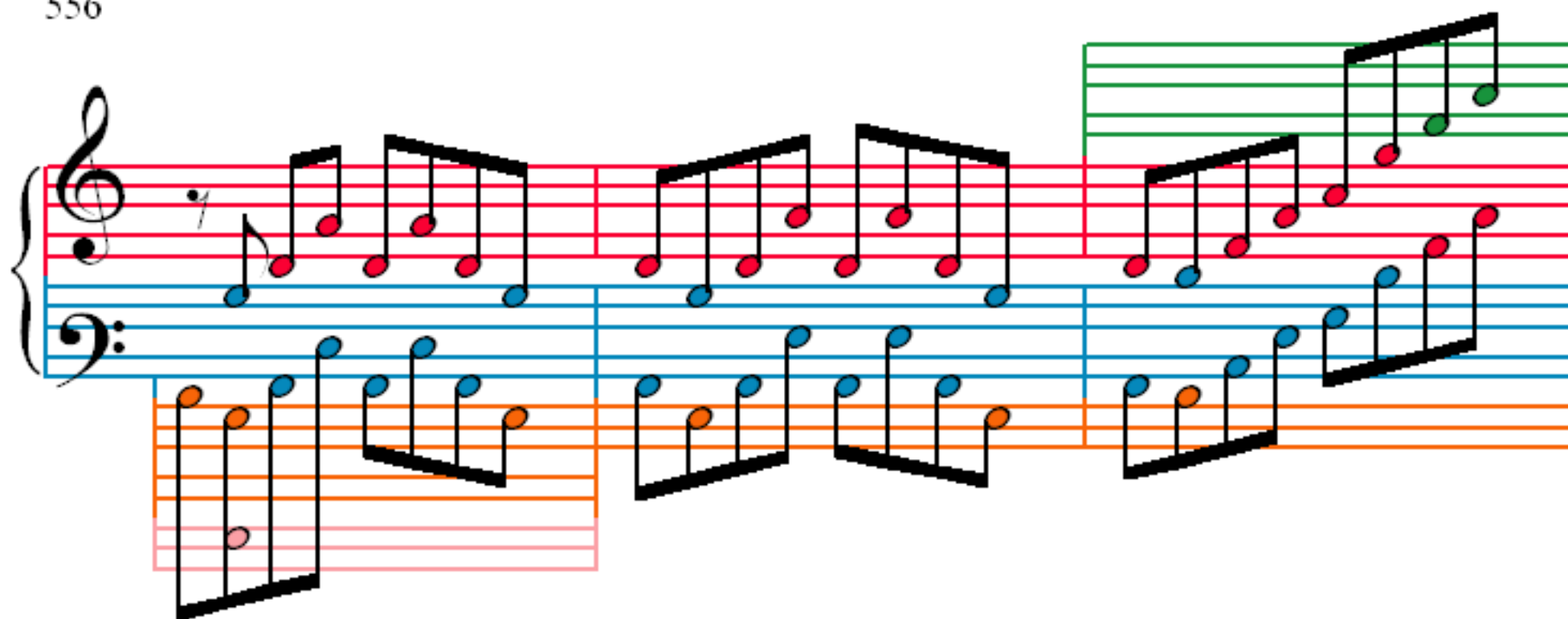
548

Measures 548-551 of the Violin Sonata No. 9 in A Minor. The score continues the complex texture from the previous system. The right hand (treble clef) plays a series of eighth notes in the upper register, while the left hand (bass clef) plays a series of eighth notes in the lower register. The music is characterized by a high level of chromaticism and a fast tempo.

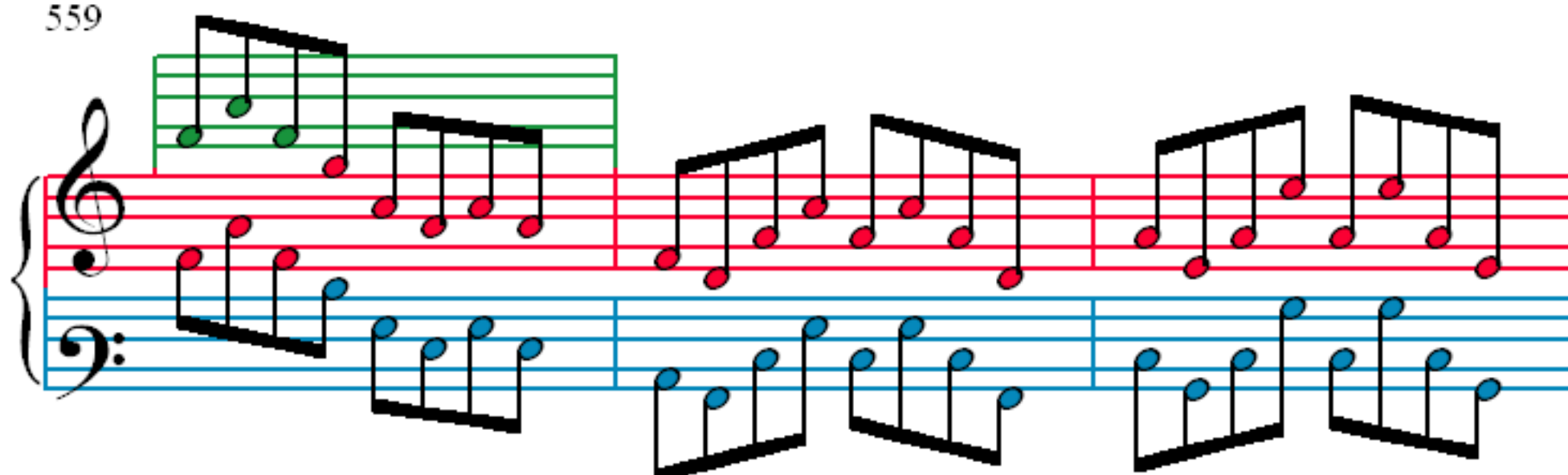
552

Measures 552-555 of the Violin Sonata No. 9 in A Minor. The score continues the complex texture from the previous system. The right hand (treble clef) plays a series of eighth notes in the upper register, while the left hand (bass clef) plays a series of eighth notes in the lower register. The music is characterized by a high level of chromaticism and a fast tempo.

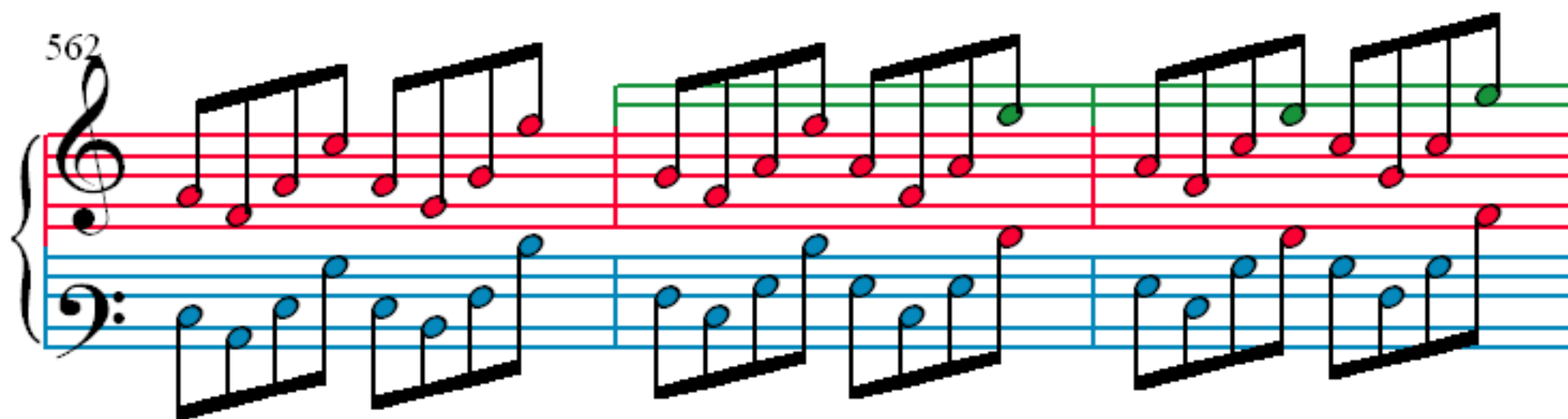
556



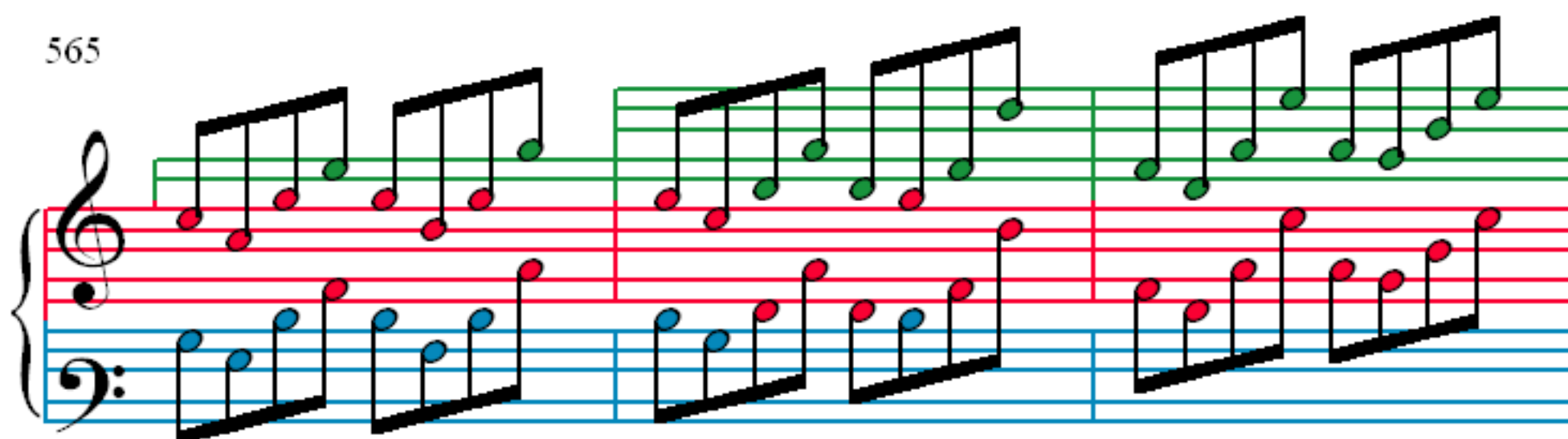
559



562



565



568

571

574

577

581

Measures 581-584. The score is for a piano accompaniment. The right hand (treble clef) has a purple staff with notes and a red staff with rests. The left hand (bass clef) has a blue staff with notes and an orange staff with notes. The notes are colored: purple, green, blue, and orange.

585

Measures 585-588. The score is for a piano accompaniment. The right hand (treble clef) has a purple staff with notes and a red staff with rests. The left hand (bass clef) has a blue staff with notes and an orange staff with notes. The notes are colored: purple, green, blue, and orange.

589

Measures 589-592. The score is for a piano accompaniment. The right hand (treble clef) has a purple staff with notes and a red staff with rests. The left hand (bass clef) has a blue staff with notes and an orange staff with notes. The notes are colored: purple, green, blue, and orange.

593

Measures 593-596. The score is for a piano accompaniment. The right hand (treble clef) has a purple staff with notes and a red staff with rests. The left hand (bass clef) has a blue staff with notes and an orange staff with notes. The notes are colored: purple, green, blue, and orange.

596

600

604

608

612

Measures 612-615 of the Violin Sonata No. 9 in A Minor. The score is written for piano (p) and violin (v). The piano part features a continuous eighth-note accompaniment in the right hand, while the left hand plays a steady eighth-note bass line. The violin part enters in measure 613 with a melodic line, featuring a grace note in measure 614. The key signature is one flat (D minor), and the time signature is 4/4.

616

Measures 616-619 of the Violin Sonata No. 9 in A Minor. The piano accompaniment continues with its eighth-note texture. The violin part continues its melodic development, with a grace note in measure 617. The key signature remains one flat (D minor), and the time signature is 4/4.

620

Measures 620-623 of the Violin Sonata No. 9 in A Minor. The piano accompaniment continues with its eighth-note texture. The violin part continues its melodic development, with a grace note in measure 621. The key signature remains one flat (D minor), and the time signature is 4/4.

624

627

630

633

636

639

642

645

648

651

654

657

660

663

665

667

670

674

678

682

Measures 682-685. The system consists of three staves: a grand staff (treble and bass clefs) and a separate staff below the bass clef. The grand staff has a red line. The separate staff has blue and orange lines. The notation includes chords and single notes, with some notes highlighted in green and purple. The bass clef staff has notes in blue and orange. The separate staff has notes in blue and orange.

686

Measures 686-689. The system consists of three staves: a grand staff (treble and bass clefs) and a separate staff below the bass clef. The grand staff has a red line. The separate staff has blue and orange lines. The notation includes chords and single notes, with some notes highlighted in green and purple. The bass clef staff has notes in blue and orange. The separate staff has notes in blue and orange.

690

Measures 690-693. The system consists of three staves: a grand staff (treble and bass clefs) and a separate staff below the bass clef. The grand staff has a red line. The separate staff has blue and orange lines. The notation includes chords and single notes, with some notes highlighted in green and purple. The bass clef staff has notes in blue and orange. The separate staff has notes in blue and orange.

694

697

700

703

706

709

712

715

Measures 718-720. The system consists of a grand staff with a treble and bass clef. The treble staff has a green staff line and a red staff line. The bass staff has a blue staff line and an orange staff line. The music is written in 4/4 time. Measure 718: Treble staff has a quarter rest, then a quarter note G4, a quarter note A4, and a quarter note B4. Bass staff has a quarter note G2, a quarter note A2, and a quarter note B2. Measure 719: Treble staff has a quarter note G4, a quarter note A4, and a quarter note B4. Bass staff has a quarter note G2, a quarter note A2, and a quarter note B2. Measure 720: Treble staff has a quarter note G4, a quarter note A4, and a quarter note B4. Bass staff has a quarter note G2, a quarter note A2, and a quarter note B2.

721

Measures 721-723. The system consists of a grand staff with a treble and bass clef. The treble staff has a green staff line and a red staff line. The bass staff has a blue staff line and an orange staff line. The music is written in 4/4 time. Measure 721: Treble staff has a quarter note G4, a quarter note A4, and a quarter note B4. Bass staff has a quarter note G2, a quarter note A2, and a quarter note B2. Measure 722: Treble staff has a quarter note G4, a quarter note A4, and a quarter note B4. Bass staff has a quarter note G2, a quarter note A2, and a quarter note B2. Measure 723: Treble staff has a quarter note G4, a quarter note A4, and a quarter note B4. Bass staff has a quarter note G2, a quarter note A2, and a quarter note B2.

724

Measures 724-726. The system consists of a grand staff with a treble and bass clef. The treble staff has a green staff line and a red staff line. The bass staff has a blue staff line and an orange staff line. The music is written in 4/4 time. Measure 724: Treble staff has a quarter note G4, a quarter note A4, and a quarter note B4. Bass staff has a quarter note G2, a quarter note A2, and a quarter note B2. Measure 725: Treble staff has a quarter note G4, a quarter note A4, and a quarter note B4. Bass staff has a quarter note G2, a quarter note A2, and a quarter note B2. Measure 726: Treble staff has a quarter note G4, a quarter note A4, and a quarter note B4. Bass staff has a quarter note G2, a quarter note A2, and a quarter note B2.

727

Measures 727-729. The system consists of a grand staff with a treble and bass clef. The treble staff has a green staff line and a red staff line. The bass staff has a blue staff line and an orange staff line. The music is written in 4/4 time. Measure 727: Treble staff has a quarter note G4, a quarter note A4, and a quarter note B4. Bass staff has a quarter note G2, a quarter note A2, and a quarter note B2. Measure 728: Treble staff has a quarter note G4, a quarter note A4, and a quarter note B4. Bass staff has a quarter note G2, a quarter note A2, and a quarter note B2. Measure 729: Treble staff has a quarter note G4, a quarter note A4, and a quarter note B4. Bass staff has a quarter note G2, a quarter note A2, and a quarter note B2.

730

734

738

742

745

748

751

754

758

761

764

766

768

770

772