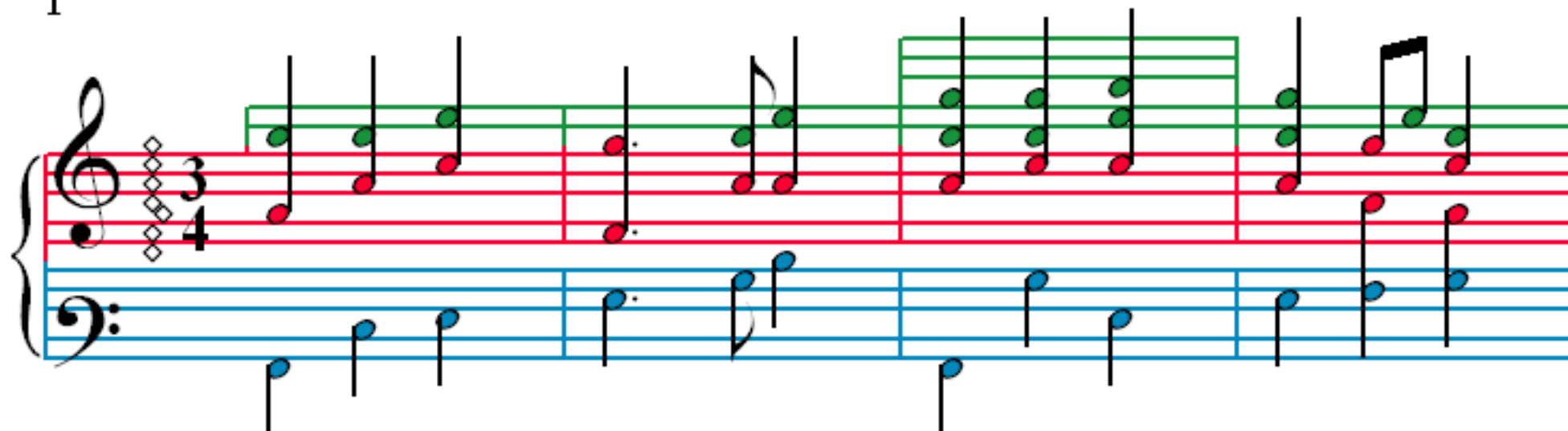


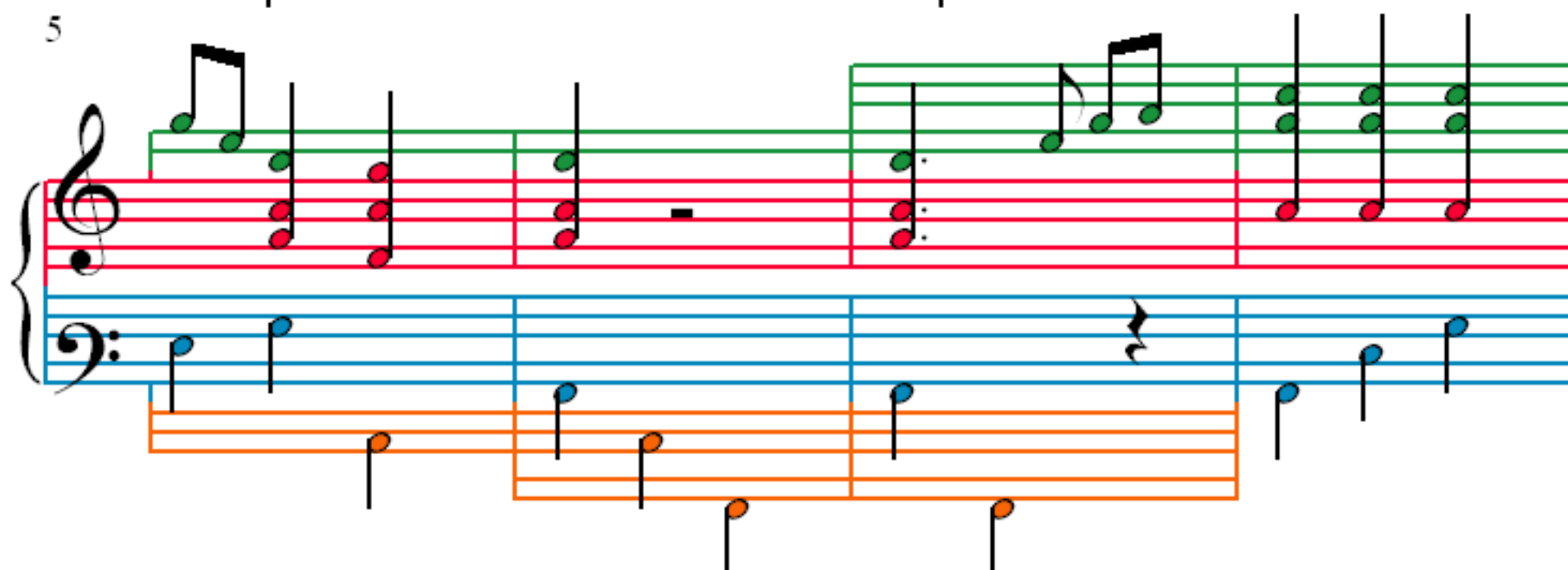
Seven Variations - Opus WoO 78

L. V. Beethoven (1770–1827)

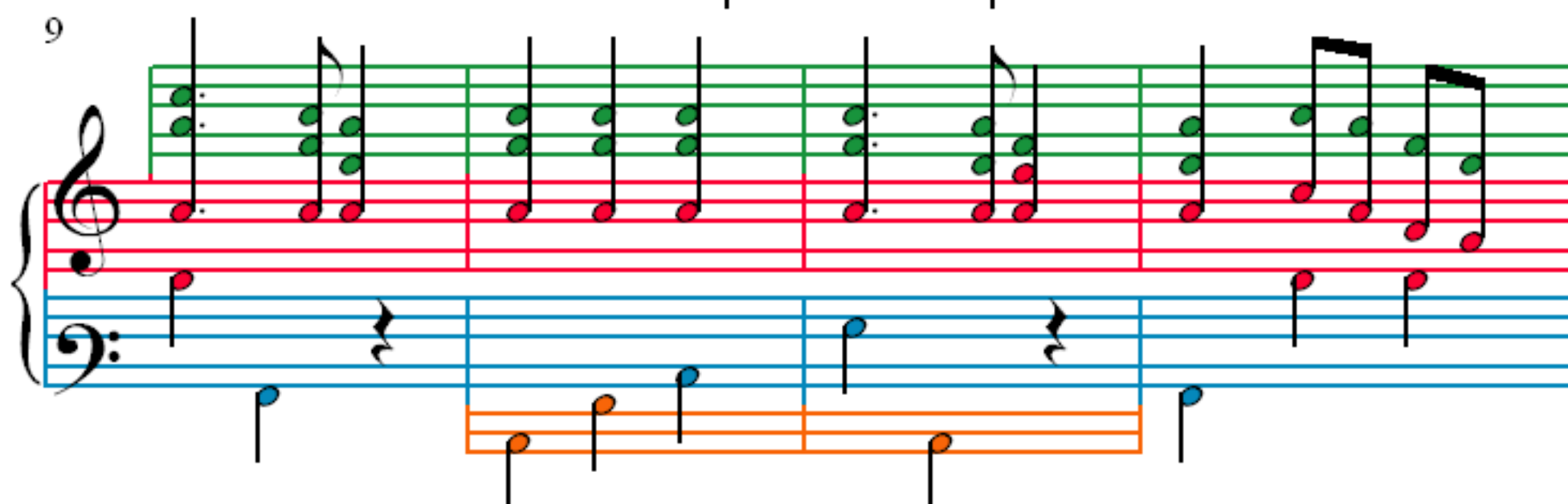
1



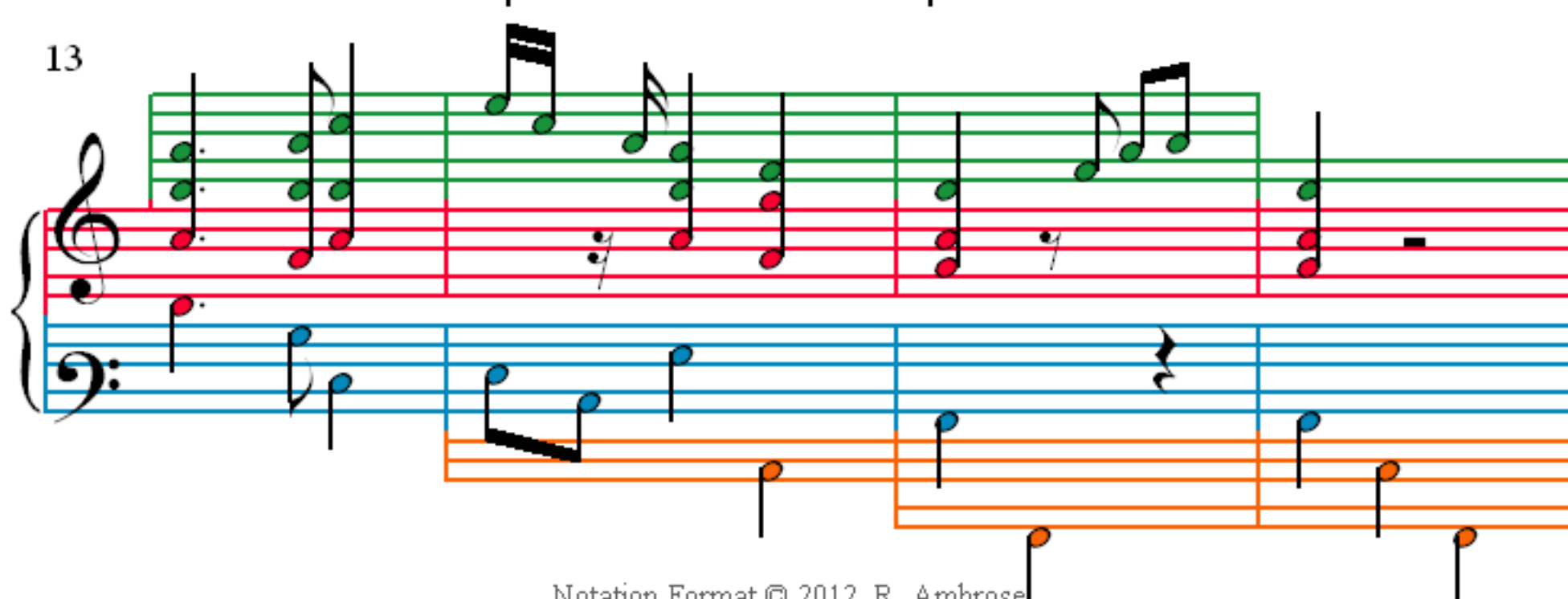
5



9



13



17

Measures 17-20. Treble clef has a green line at the top. Bass clef has a blue line at the bottom. Red lines connect notes between staves. Measure 19 has a greyed-out measure with a 7 below it.

21

Measures 21-24. Treble clef has a green line at the top. Bass clef has a blue line at the bottom. Red lines connect notes between staves. Measure 23 has a greyed-out measure with a 7 below it.

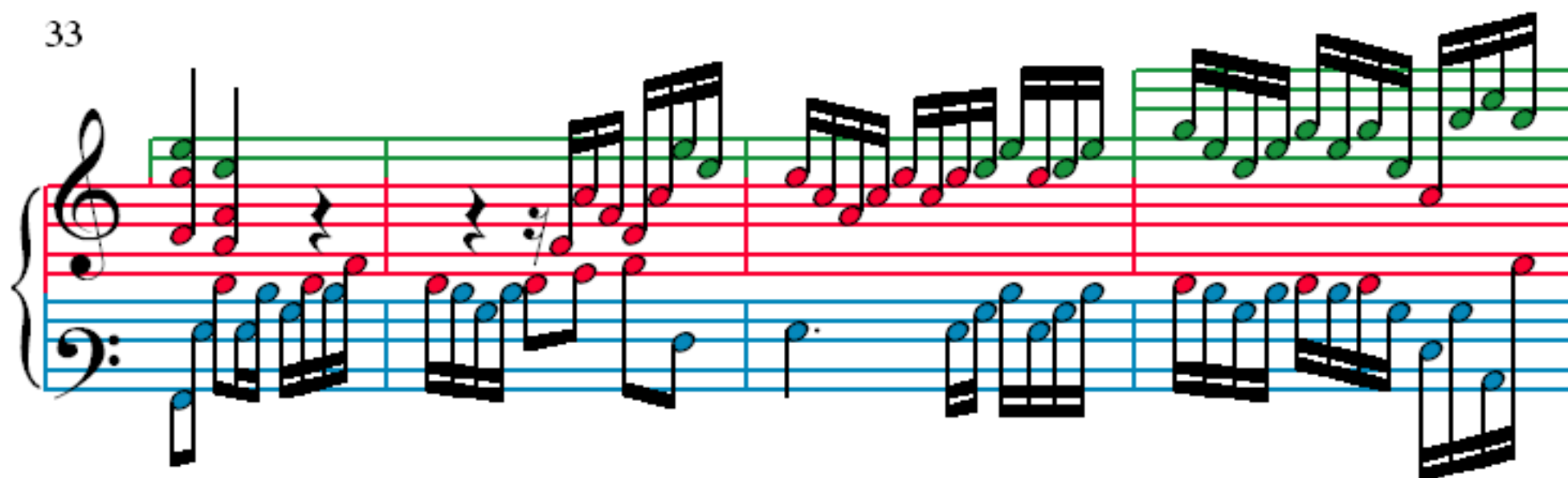
25

Measures 25-28. Treble clef has a green line at the top. Bass clef has a blue line at the bottom. Red lines connect notes between staves.

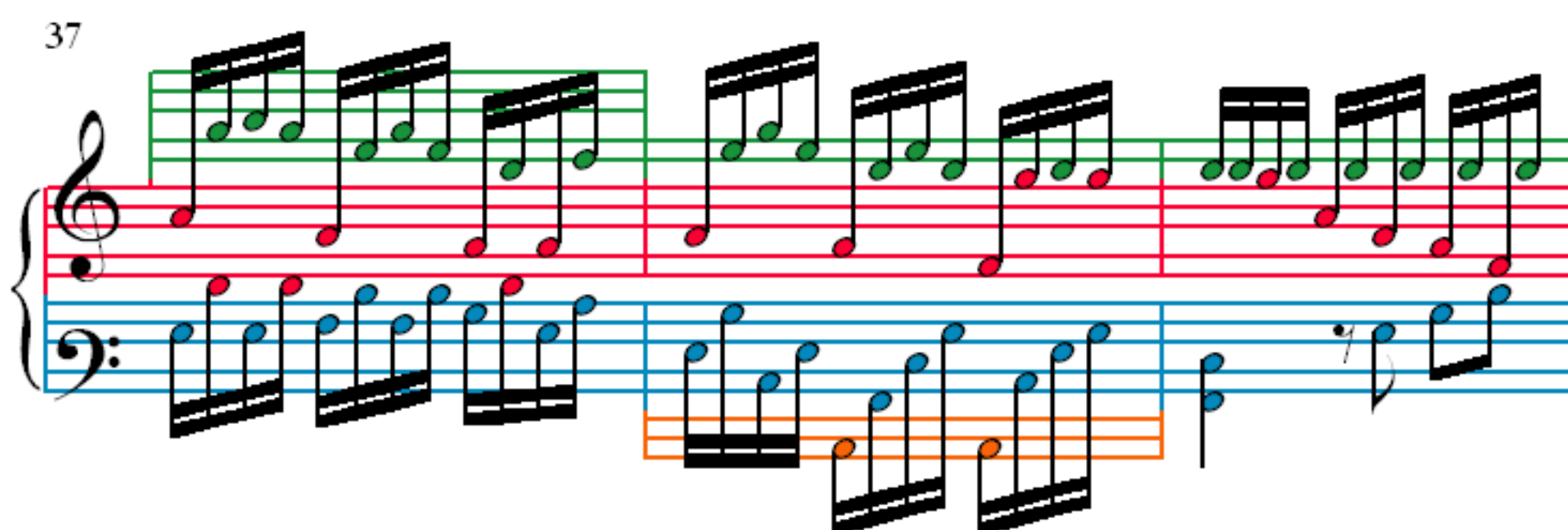
29

Measures 29-32. Treble clef has a green line at the top. Bass clef has a blue line at the bottom. Red lines connect notes between staves. Measure 30 has a greyed-out measure with a 7 below it. Measure 31 has a greyed-out measure with a 7 below it. Measure 32 has a greyed-out measure with a 7 below it. An orange line is at the bottom of the bass clef staff.

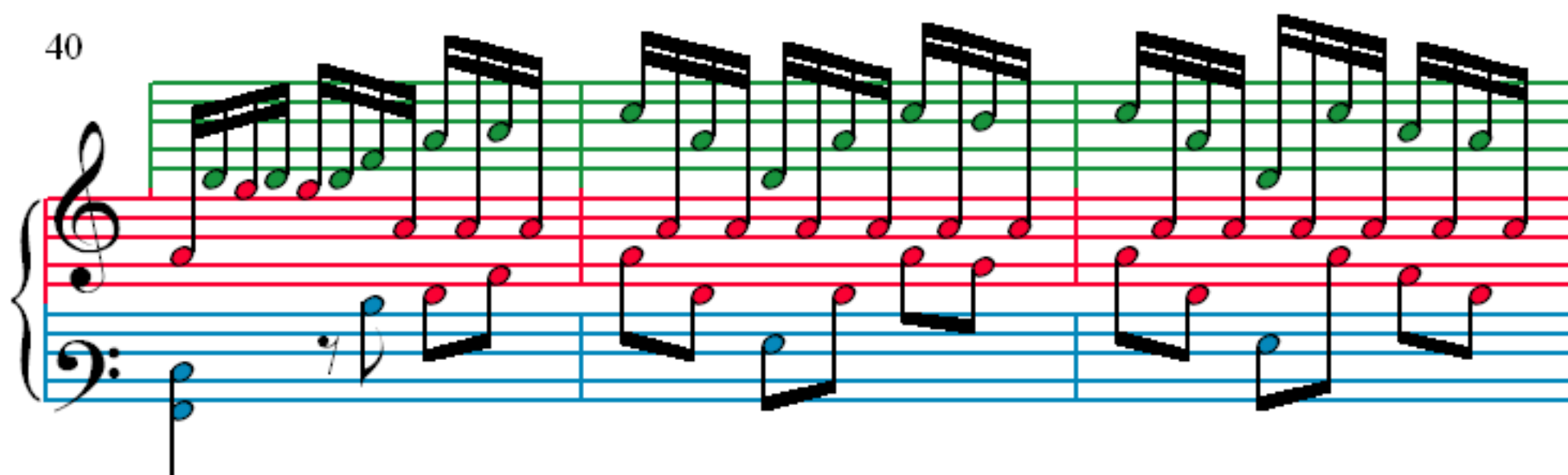
33



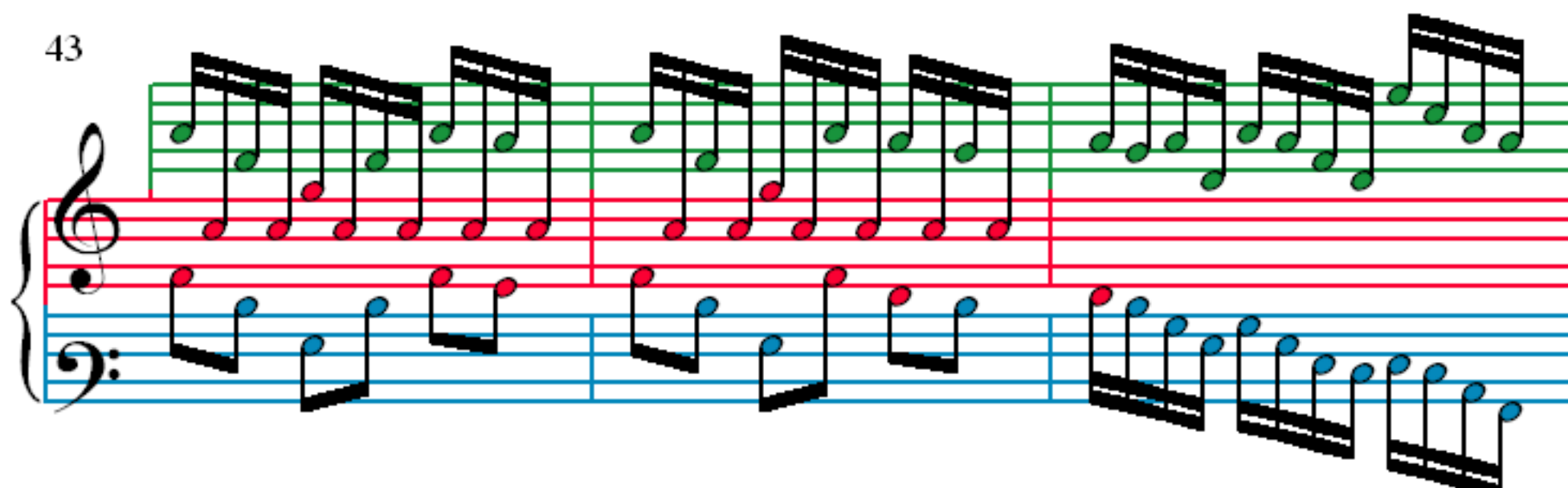
37



40



43



46

Measures 46-48. Treble clef: purple and green notes. Bass clef: blue and red notes. Measure 48 has a red note in the treble.

49

Measures 49-51. Treble clef: green and red notes. Bass clef: blue and red notes. Measure 51 has an orange note in the bass.

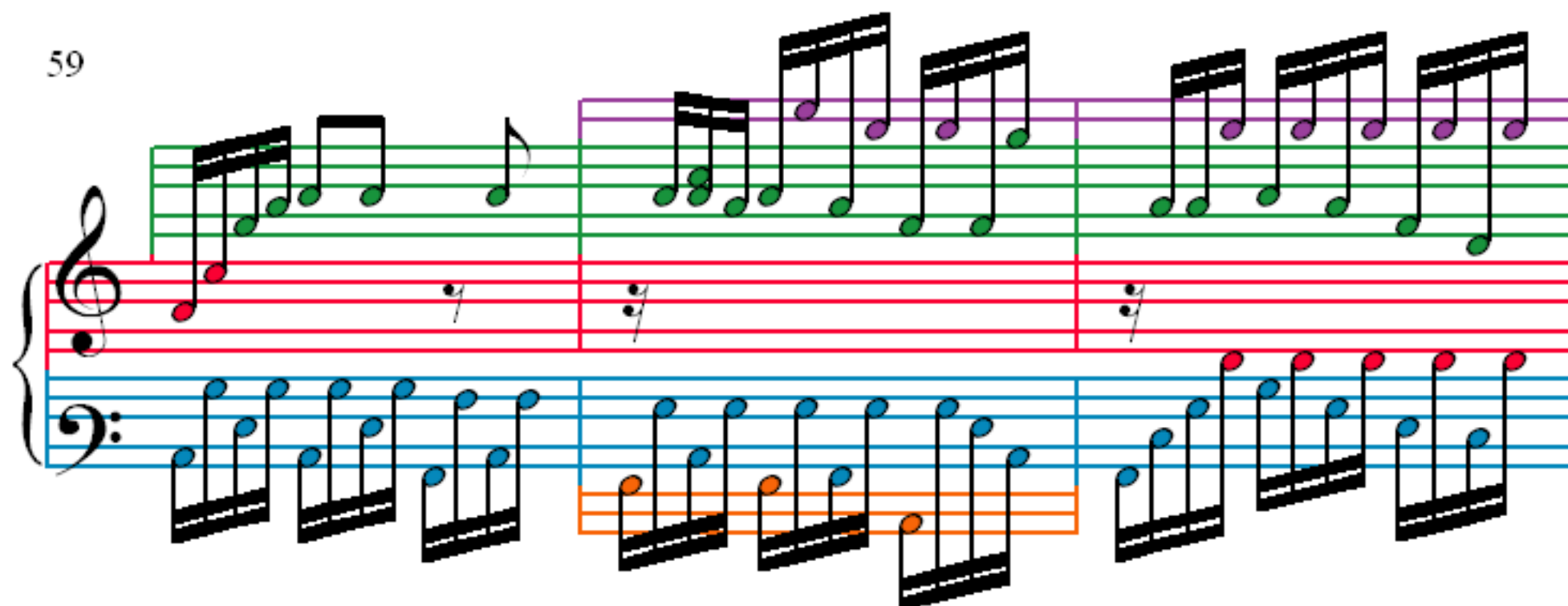
52

Measures 52-54. Treble clef: purple and green notes. Bass clef: blue and red notes. Measure 54 has a red note in the treble.

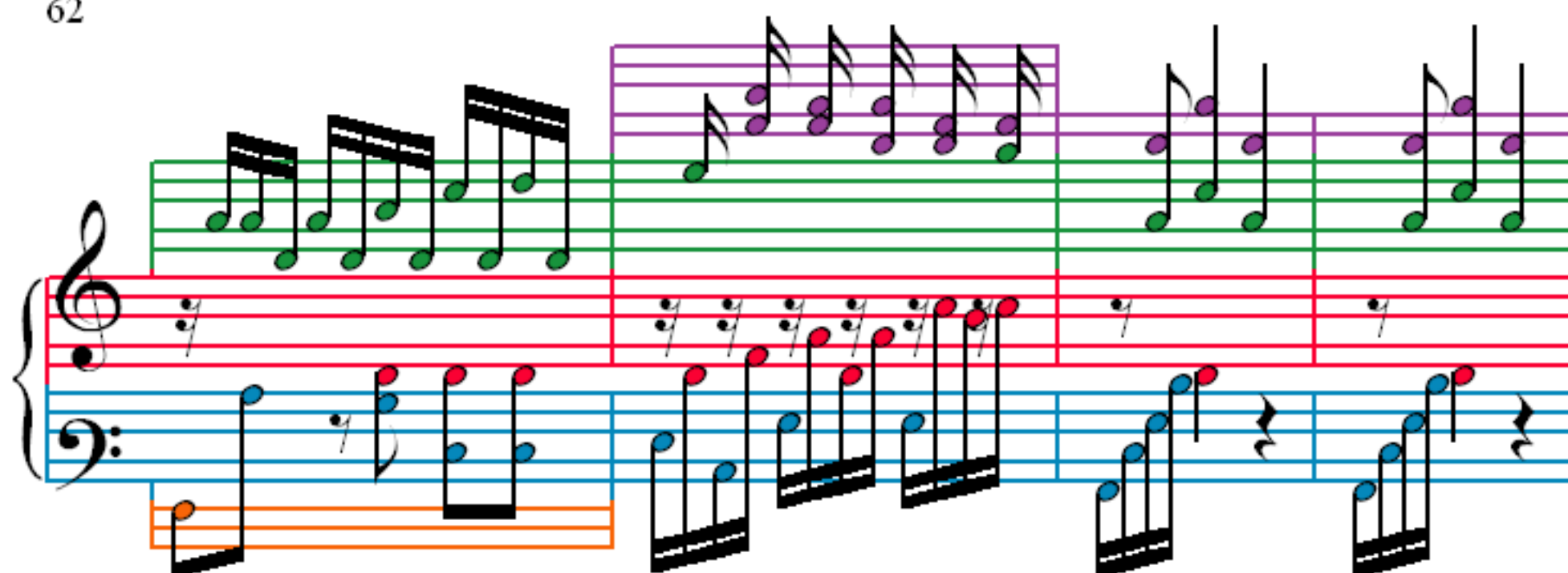
55

Measures 55-58. Treble clef: purple and green notes. Bass clef: blue and red notes. Measure 58 has an orange note in the bass.

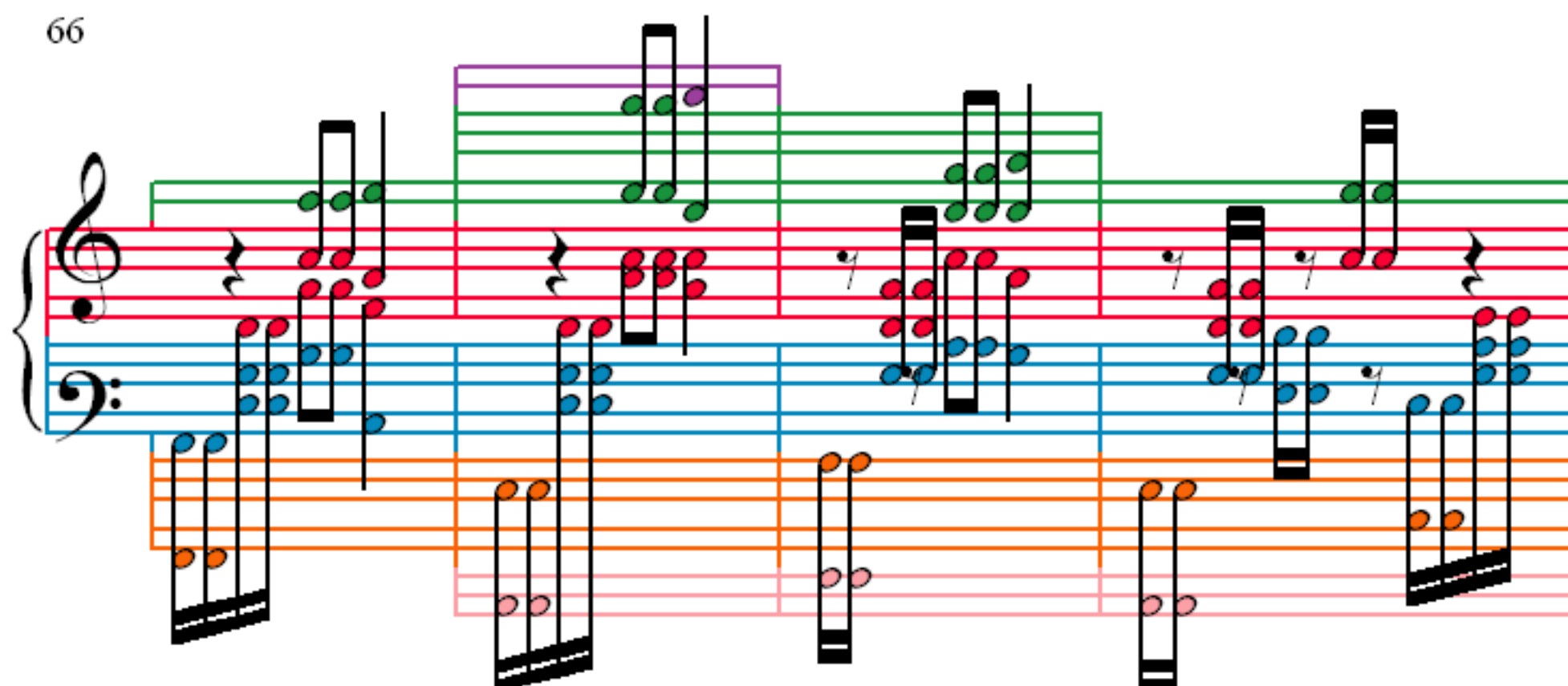
59



62



66



70

Measures 70-73 of the piece. The notation is for a piano (p) and features a complex, multi-layered texture. The right hand (RH) plays a series of chords and single notes, while the left hand (LH) plays a series of chords and single notes. The notes are color-coded: red for the RH, blue for the LH, and green for the RH. The RH notes are often beamed together in groups of four or five, suggesting a rapid, rhythmic pattern. The LH notes are often beamed together in groups of four or five, suggesting a rapid, rhythmic pattern. The notes are often beamed together in groups of four or five, suggesting a rapid, rhythmic pattern.

74

Measures 74-77 of the piece. The notation is for a piano (p) and features a complex, multi-layered texture. The right hand (RH) plays a series of chords and single notes, while the left hand (LH) plays a series of chords and single notes. The notes are color-coded: red for the RH, blue for the LH, and green for the RH. The RH notes are often beamed together in groups of four or five, suggesting a rapid, rhythmic pattern. The LH notes are often beamed together in groups of four or five, suggesting a rapid, rhythmic pattern. The notes are often beamed together in groups of four or five, suggesting a rapid, rhythmic pattern.

78

Measures 78-81 of the piece. The notation is for a piano (p) and features a complex, multi-layered texture. The right hand (RH) plays a series of chords and single notes, while the left hand (LH) plays a series of chords and single notes. The notes are color-coded: red for the RH, blue for the LH, and green for the RH. The RH notes are often beamed together in groups of four or five, suggesting a rapid, rhythmic pattern. The LH notes are often beamed together in groups of four or five, suggesting a rapid, rhythmic pattern. The notes are often beamed together in groups of four or five, suggesting a rapid, rhythmic pattern.

82



85



88



91



94

97

100

103

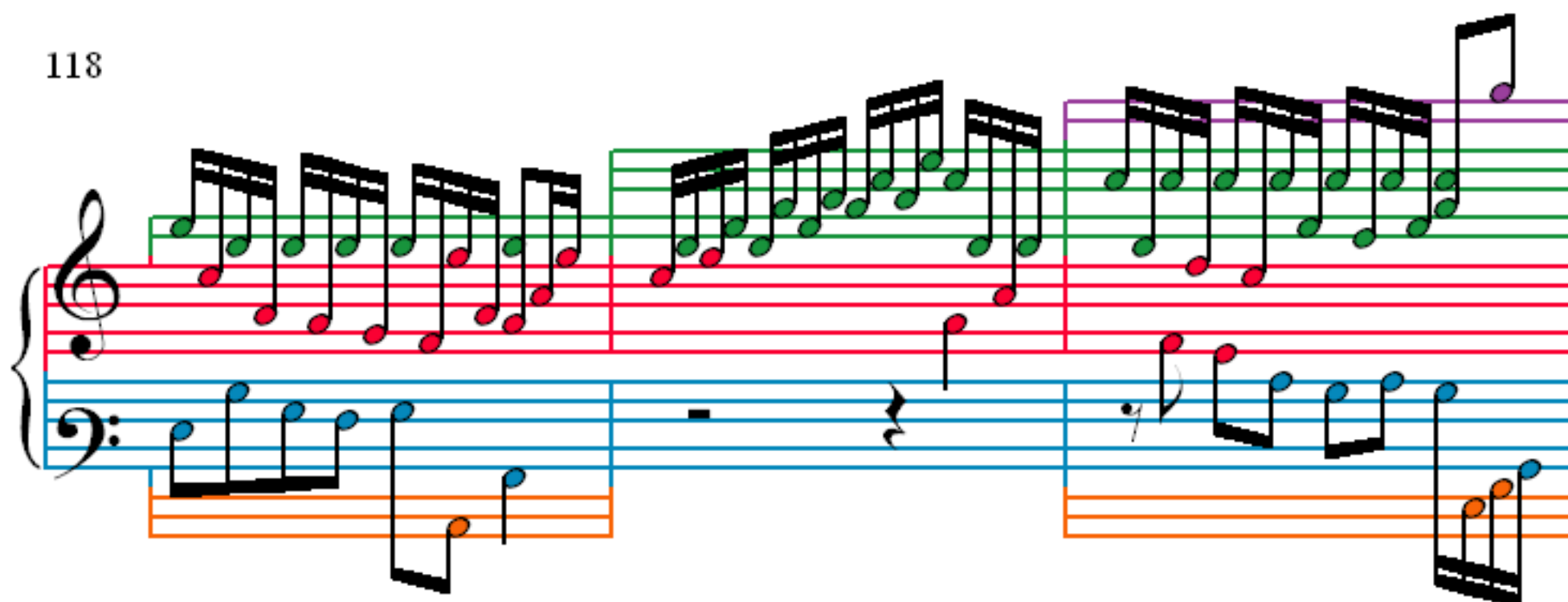
106

109

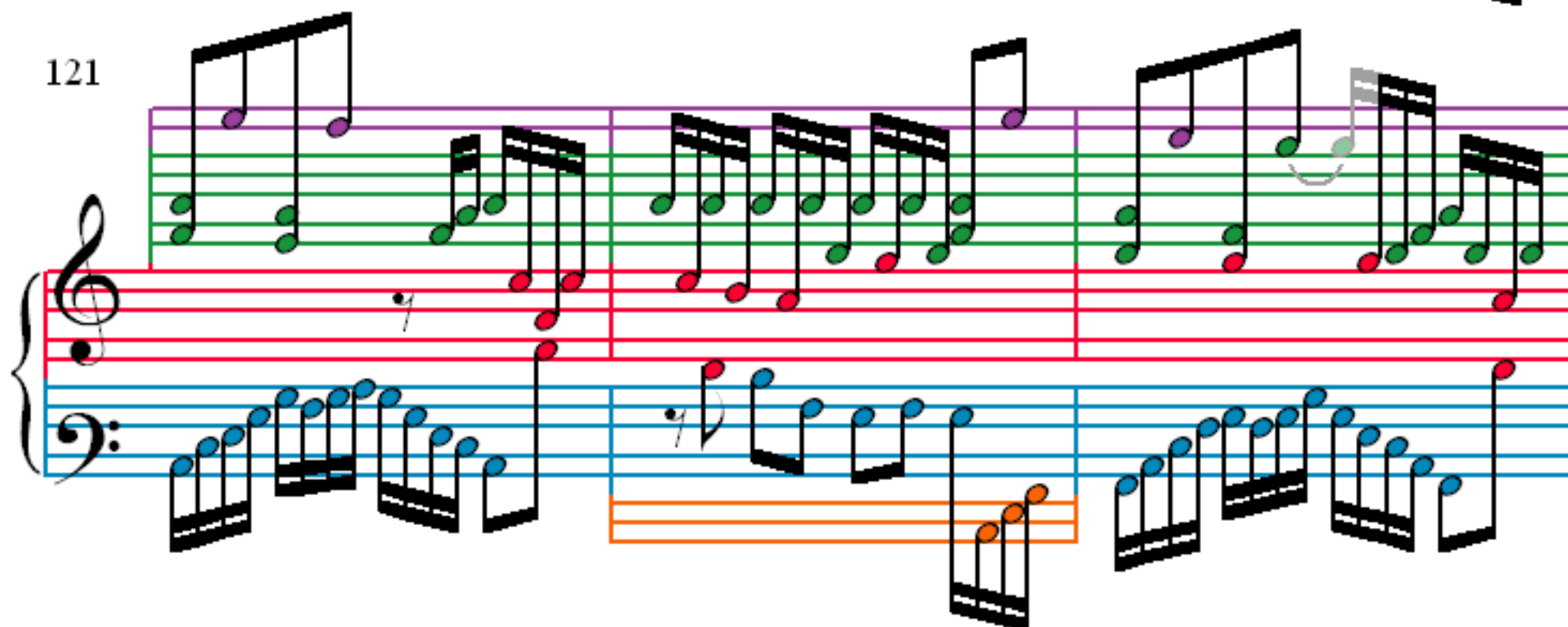
112

115

118



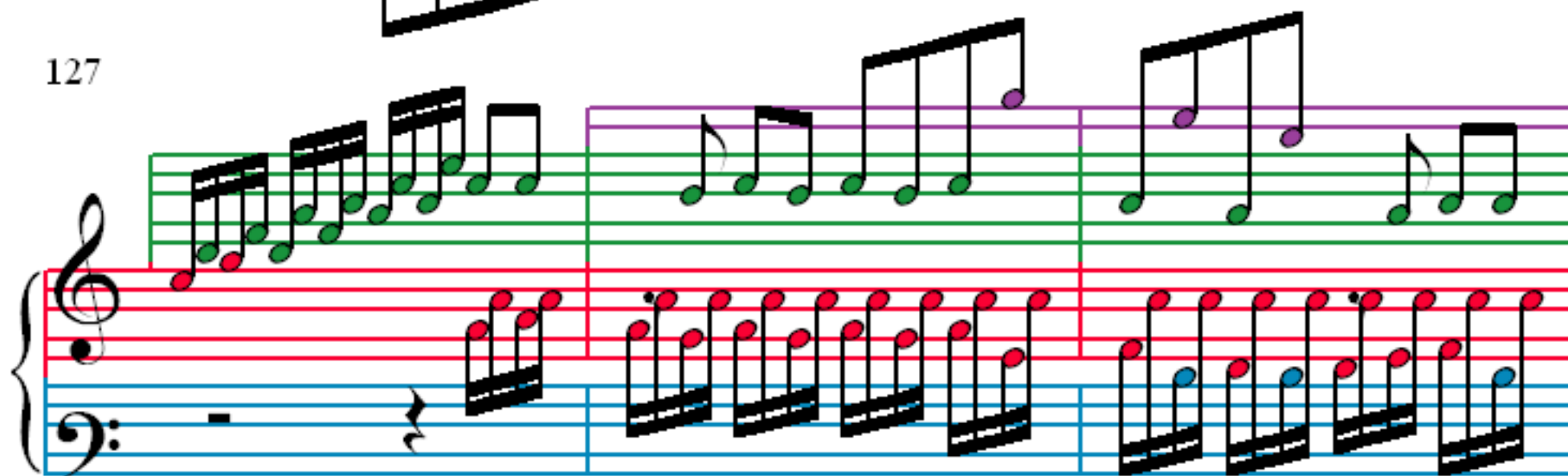
121



124



127



130

133

136

139

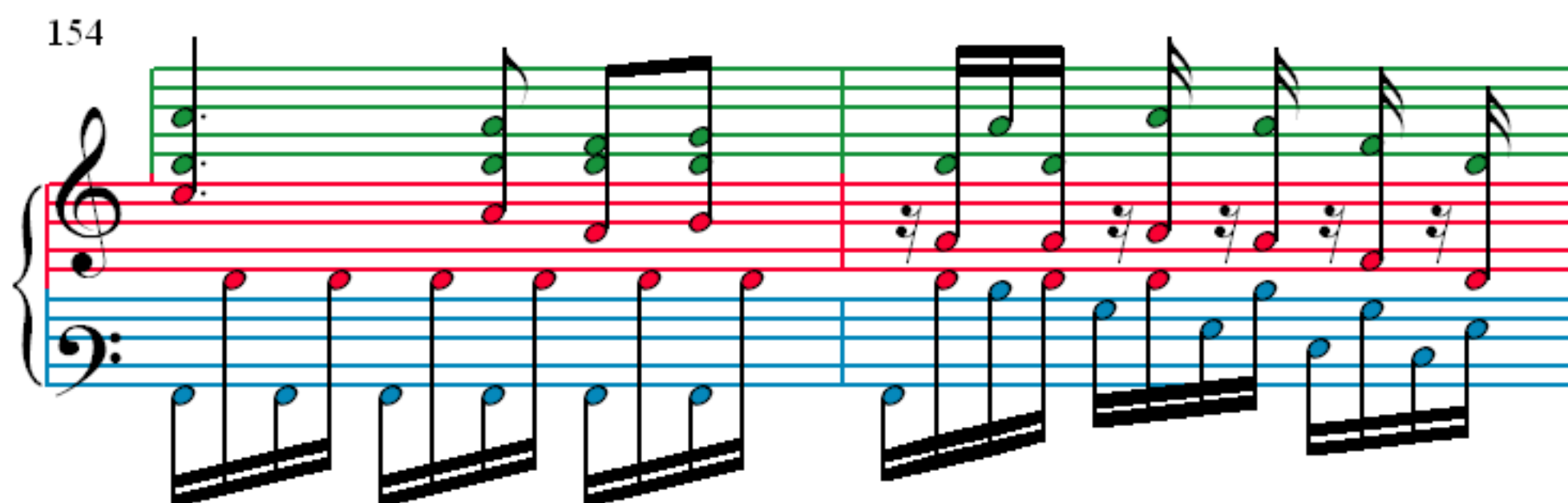
143

146

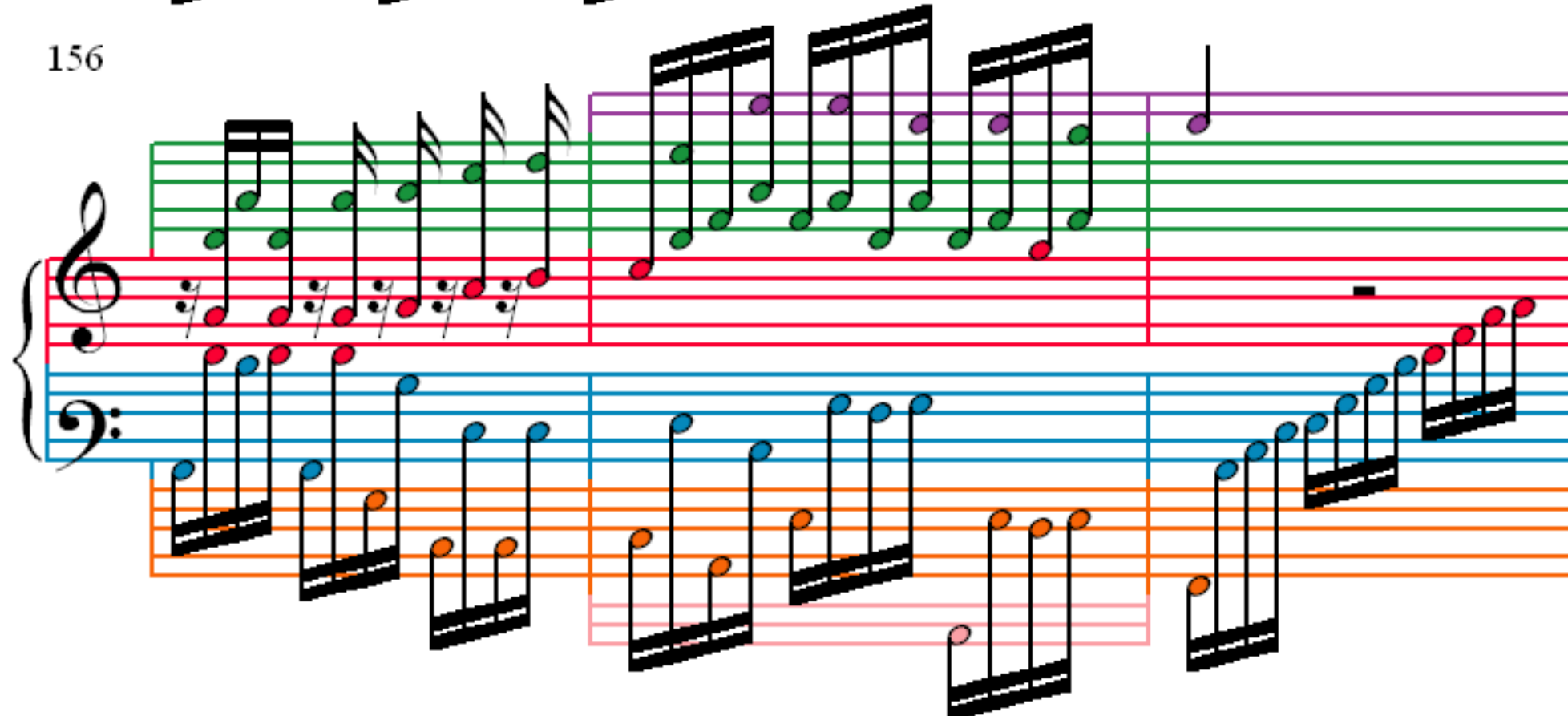
148

150

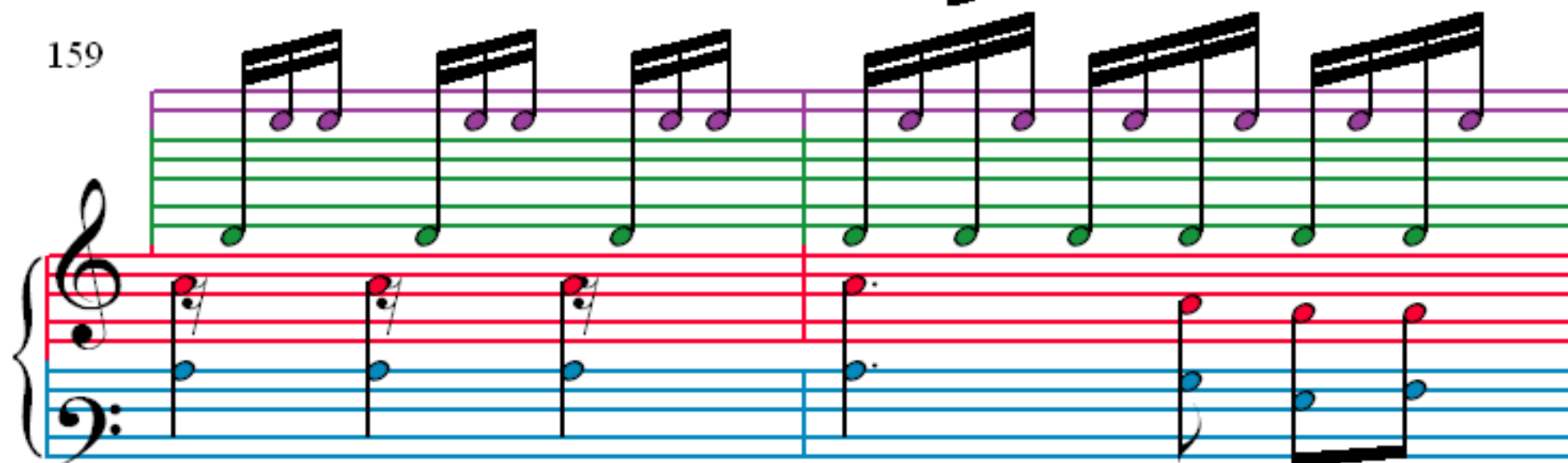
154



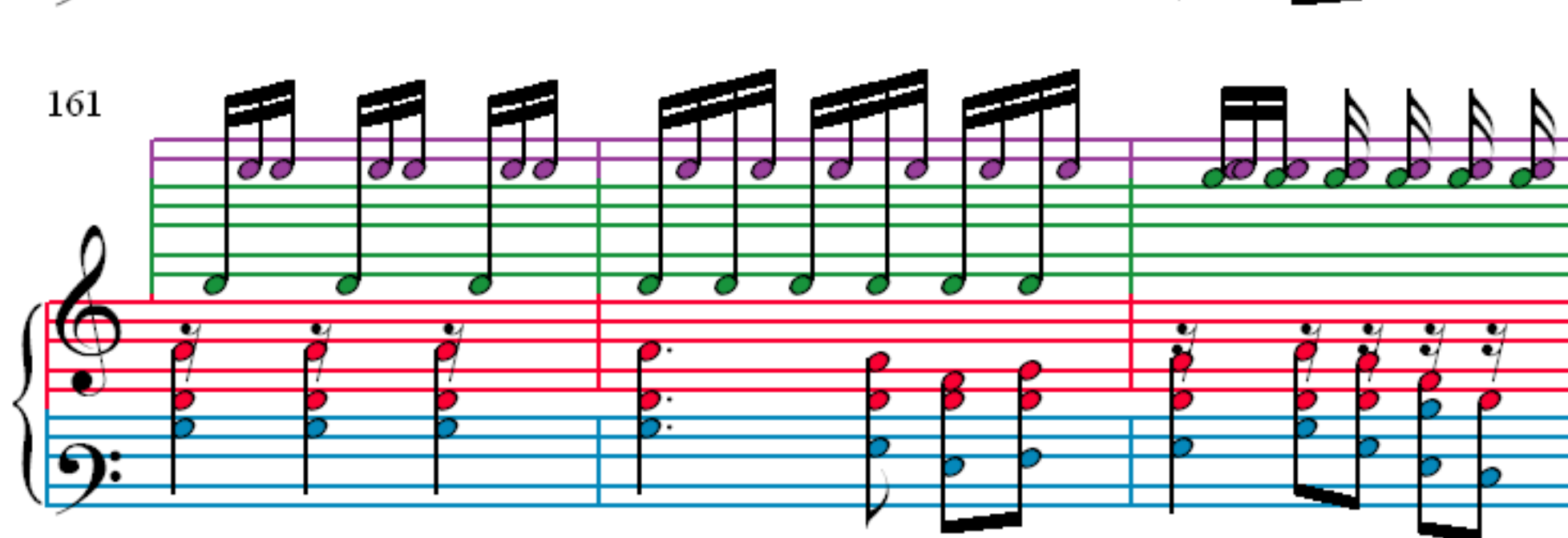
156



159



161



164

166

168

170