

Entr'acte

G. Bizet (1838–1875)

1

Measures 1-4 of the piece. The music is in 2/4 time with a key signature of one flat (B-flat). The right hand (treble clef) features a melodic line with eighth and sixteenth notes, some beamed together. The left hand (bass clef) provides a harmonic accompaniment with chords and single notes. A green bracket highlights the first measure of the right hand. The bottom staff shows a simplified version of the bass line with orange notes and stems.

5

Measures 5-8. The melodic line in the right hand continues with similar rhythmic patterns. The left hand accompaniment remains consistent. The simplified bass line is shown in orange at the bottom.

9

Measures 9-12. The right hand melody shows some variation in note values. The left hand accompaniment continues. The simplified bass line is shown in orange at the bottom.

13

Measures 13-16. The right hand melody concludes with a final note. The left hand accompaniment continues. The simplified bass line is shown in orange at the bottom.

17

Measures 17-20. Treble clef: red notes. Bass clef: blue notes. An orange staff is positioned below the bass staff.

21

Measures 21-24. Treble clef: red notes. Bass clef: blue notes. An orange staff is positioned below the bass staff.

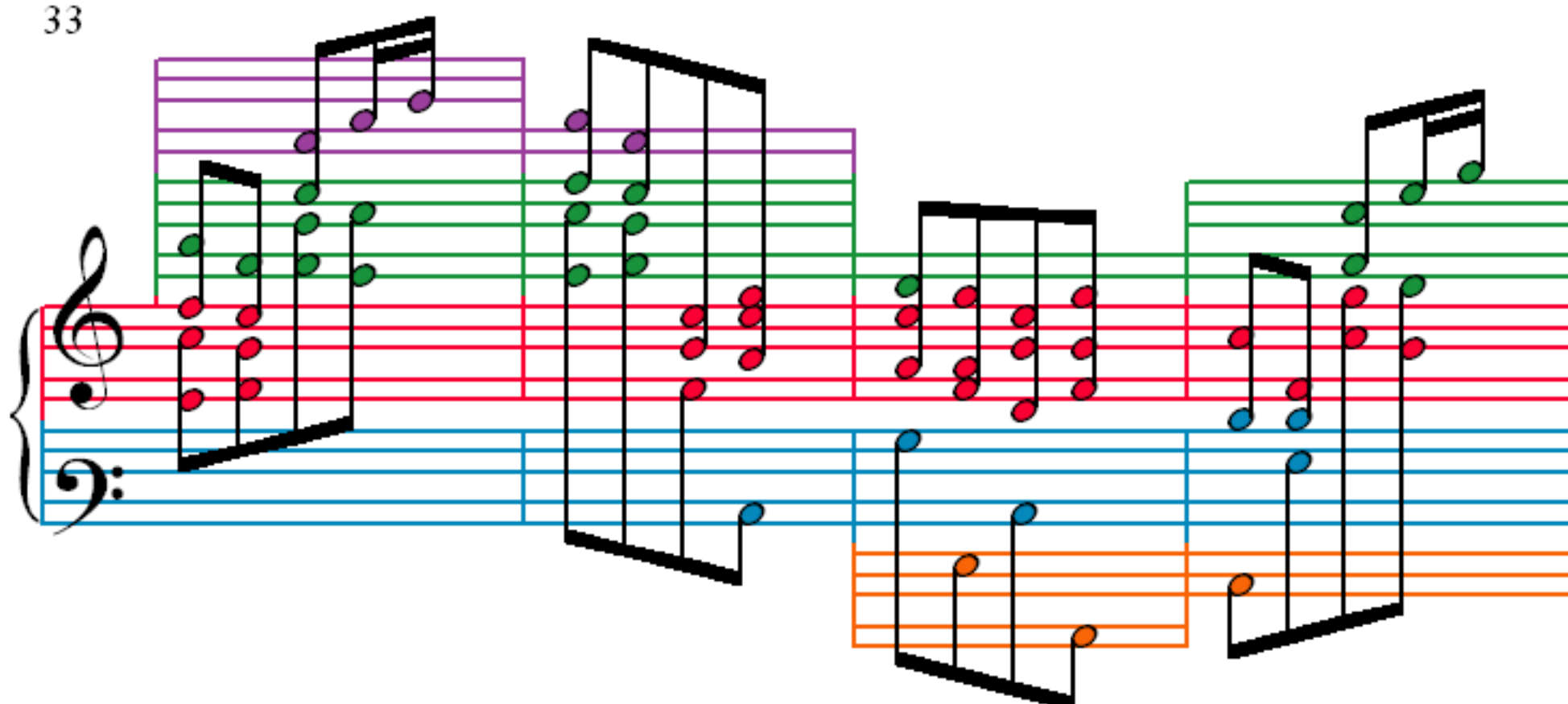
25

Measures 25-28. Treble clef: red notes. Bass clef: blue notes. An orange staff is positioned below the bass staff.

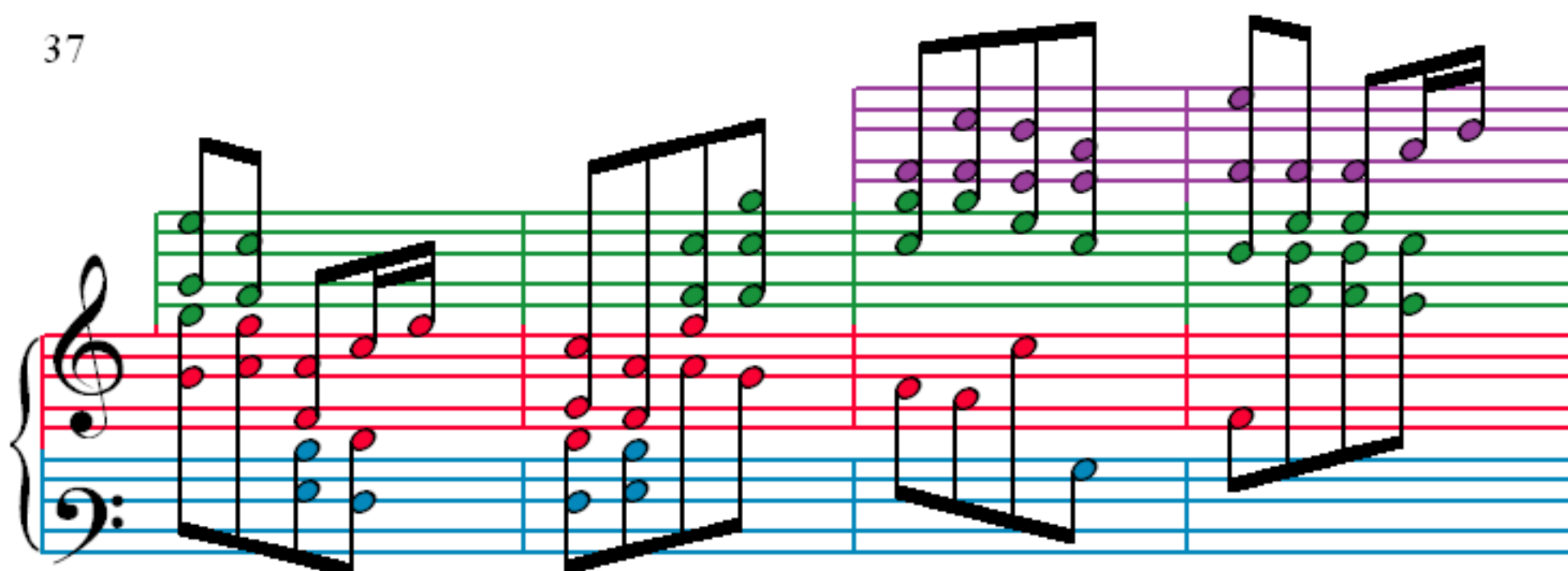
29

Measures 29-32. Treble clef: green notes. Bass clef: blue notes. An orange staff is positioned below the bass staff.

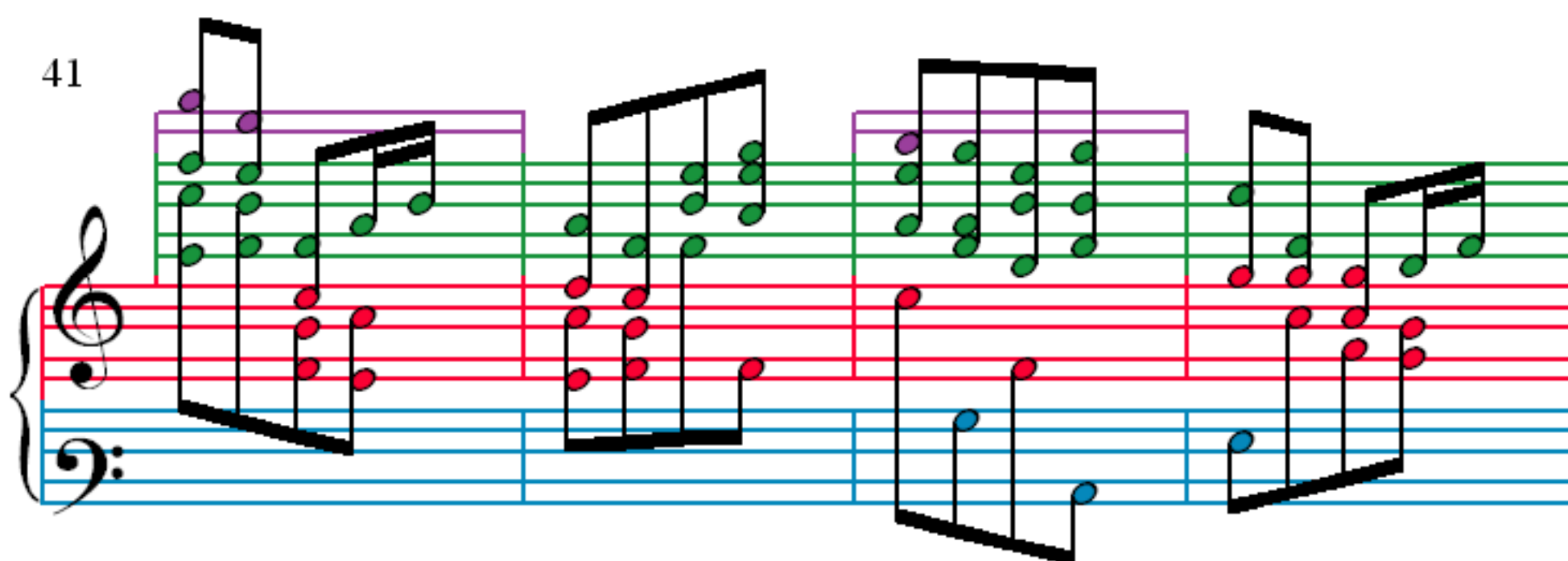
33



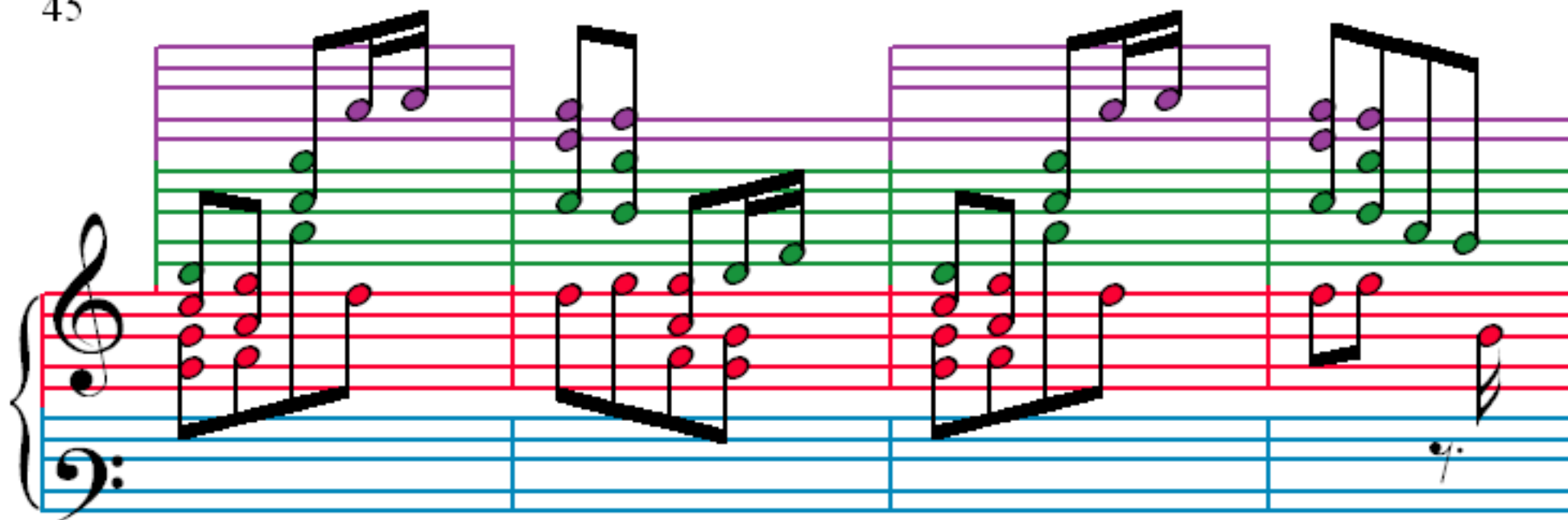
37



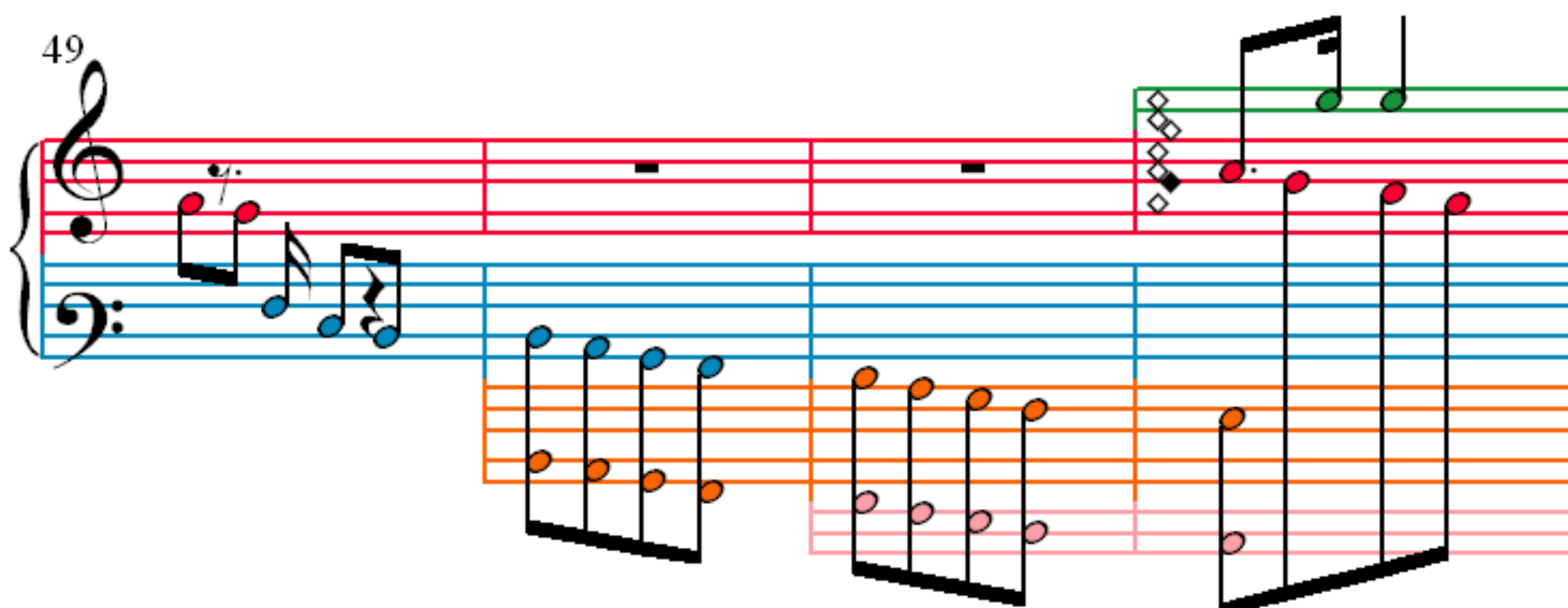
41



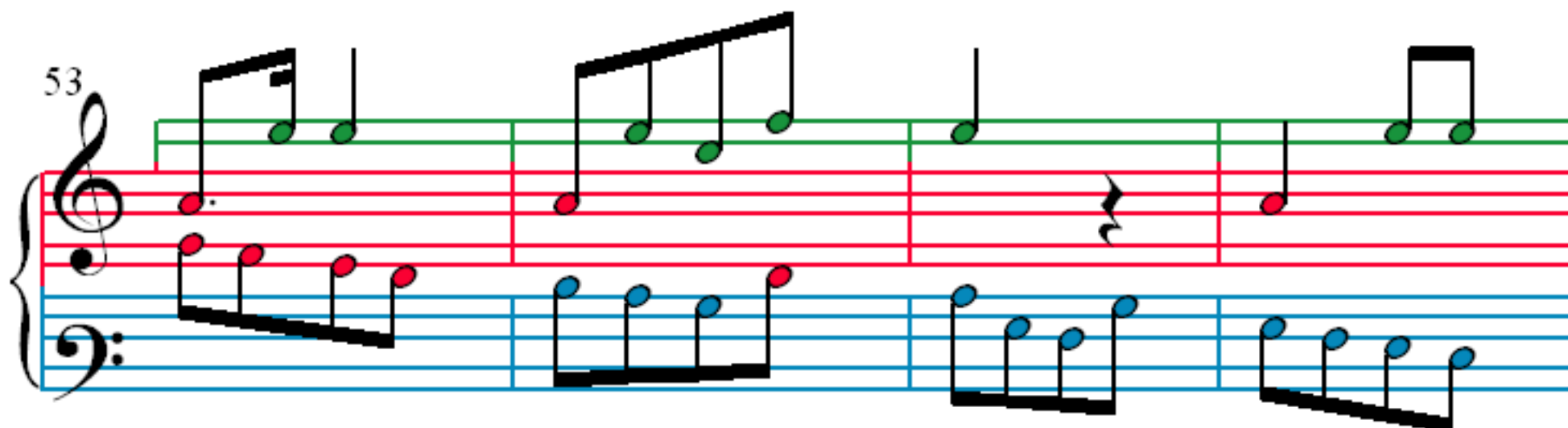
45



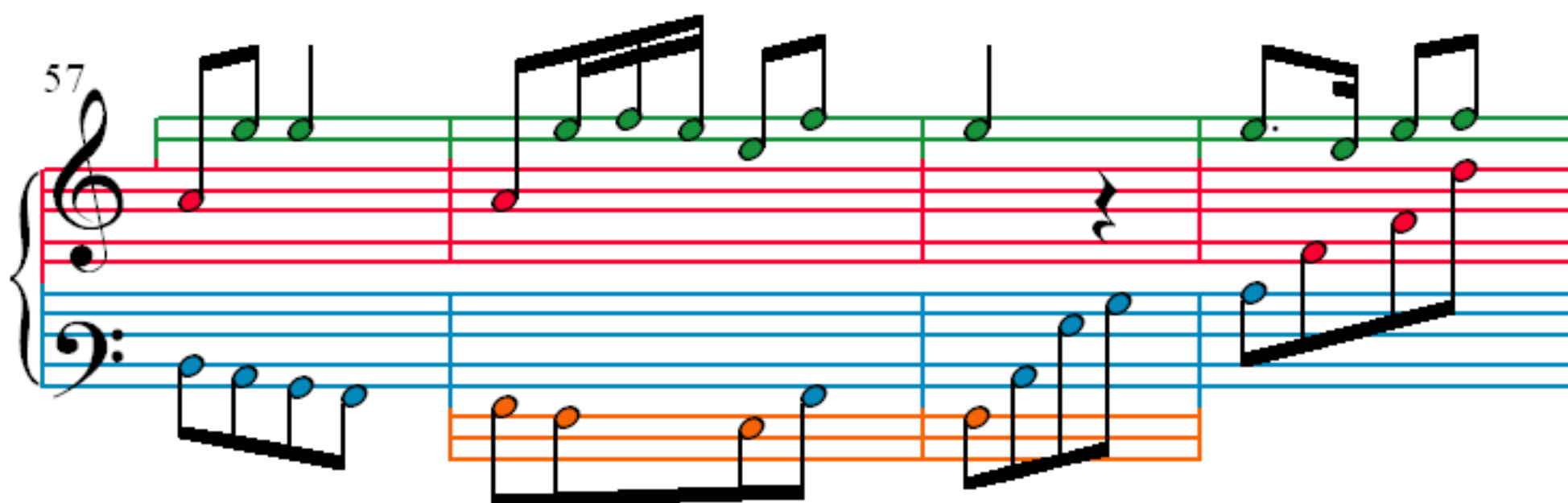
49



53



57



61

65

69

73

77

Measures 77-79 of a musical score. The system consists of a grand staff with a treble and bass clef, and a separate orange staff below. The treble staff has a green staff line above it. The bass staff has a blue staff line below it. The orange staff has an orange staff line above it. The notation includes various notes, rests, and slurs across these staves.

80

Measures 80-82 of a musical score. The system consists of a grand staff with a treble and bass clef, and a separate orange staff below. The treble staff has a green staff line above it. The bass staff has a blue staff line below it. The orange staff has an orange staff line above it. The notation includes various notes, rests, and slurs across these staves.

83

Measures 83-85 of a musical score. The system consists of a grand staff with a treble and bass clef, and a separate orange staff below. The treble staff has a green staff line above it. The bass staff has a blue staff line below it. The orange staff has an orange staff line above it. The notation includes various notes, rests, and slurs across these staves.

86

Measures 86-89 of a musical score. The system consists of a grand staff with a treble and bass clef, and a separate orange staff below. The treble staff has a green staff line above it. The bass staff has a blue staff line below it. The orange staff has an orange staff line above it. The notation includes various notes, rests, and slurs across these staves.