

# La Chasse

J. F. F. Burgmüller (1806–1874)

1

Measures 1-3 of the piece. The treble clef staff has a key signature of two sharps (F# and C#) and a time signature of 6/8. The bass clef staff contains a continuous eighth-note accompaniment pattern. Measures 1 and 2 are whole rests in the treble. Measure 3 begins with a quarter rest followed by a half note G4.

3

Measures 4-6. The treble staff has a half rest in measure 4, followed by eighth-note patterns in measures 5 and 6. The bass staff continues the eighth-note accompaniment with a half note G4 in measure 4, and eighth-note patterns in measures 5 and 6.

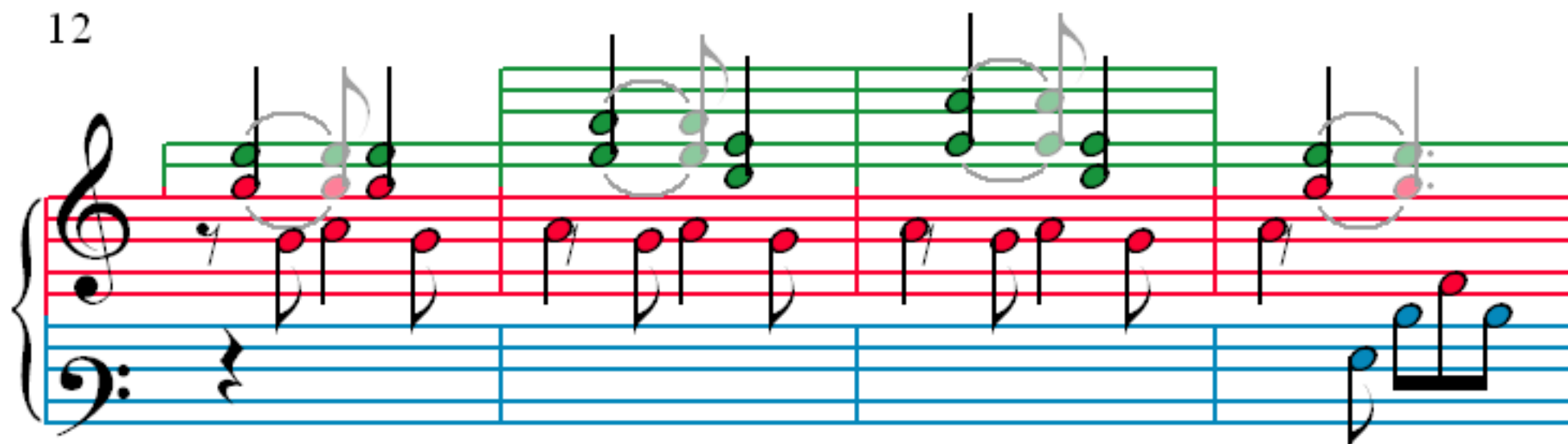
6

Measures 7-9. The treble staff continues with eighth-note patterns. The bass staff continues the eighth-note accompaniment with a half note G4 in measure 7, and eighth-note patterns in measures 8 and 9.

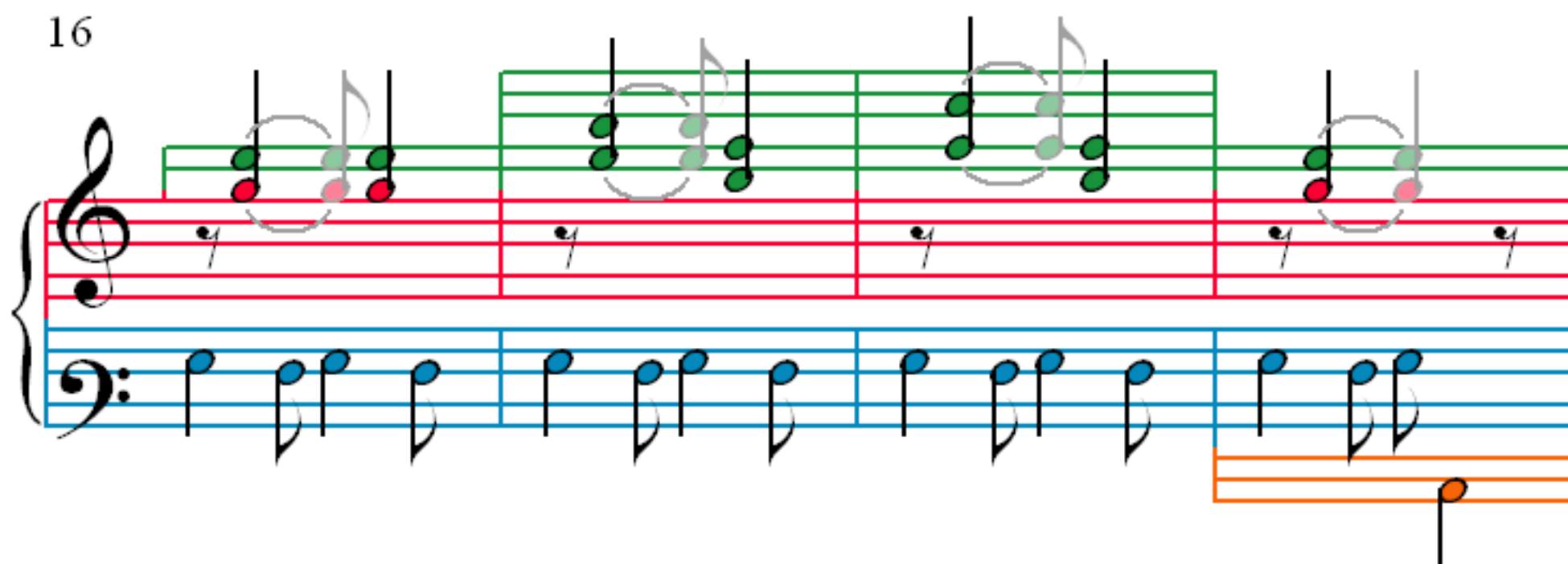
9

Measures 10-12. The treble staff continues with eighth-note patterns. The bass staff continues the eighth-note accompaniment with a half note G4 in measure 10, and eighth-note patterns in measures 11 and 12.

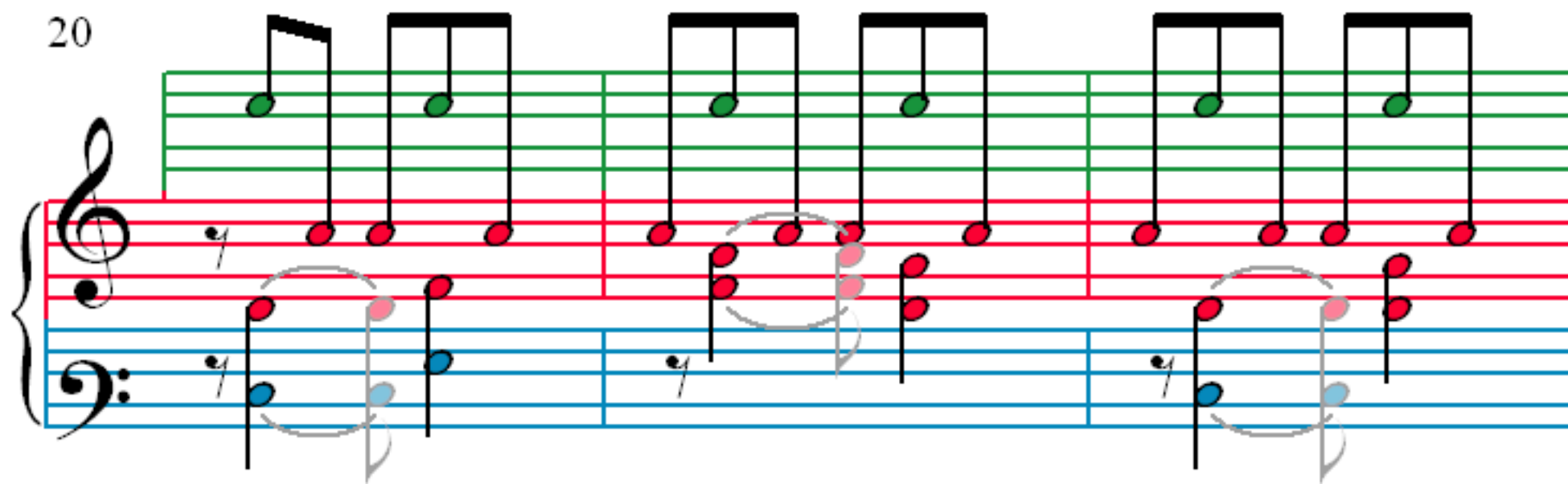
12



16



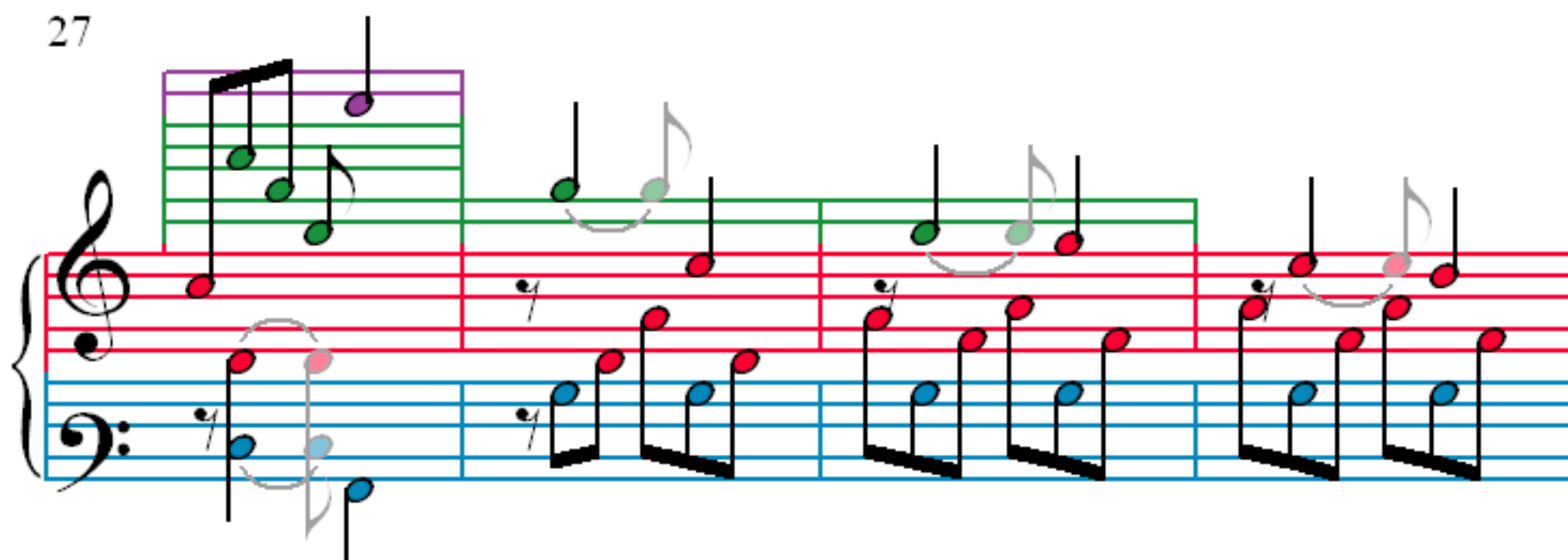
20



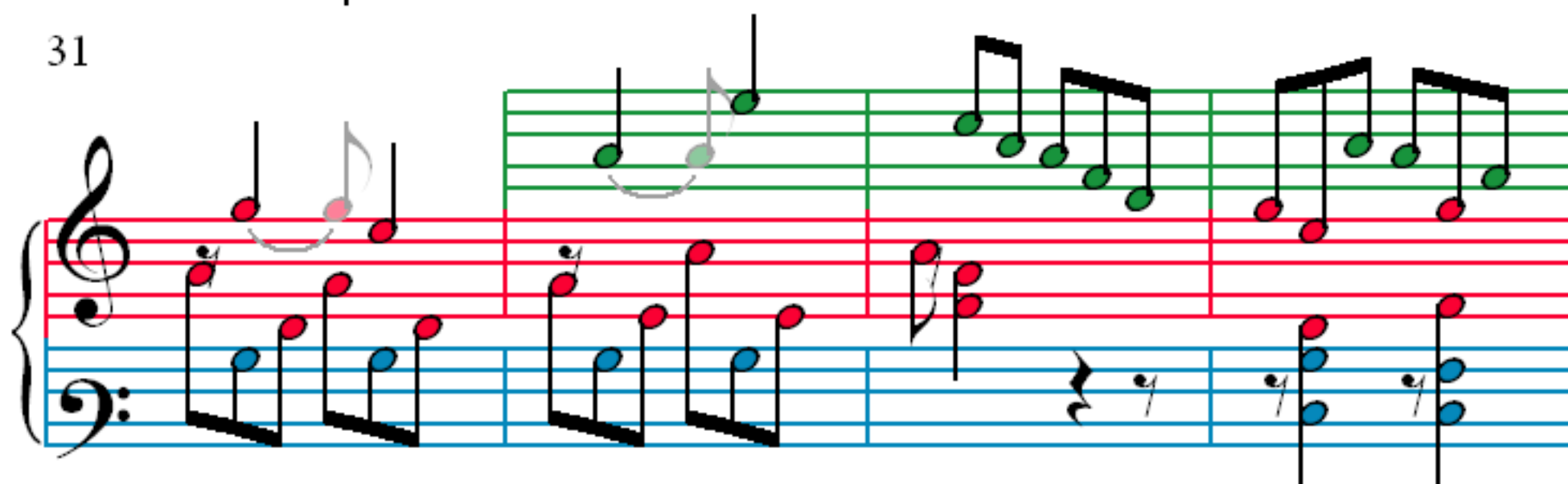
23



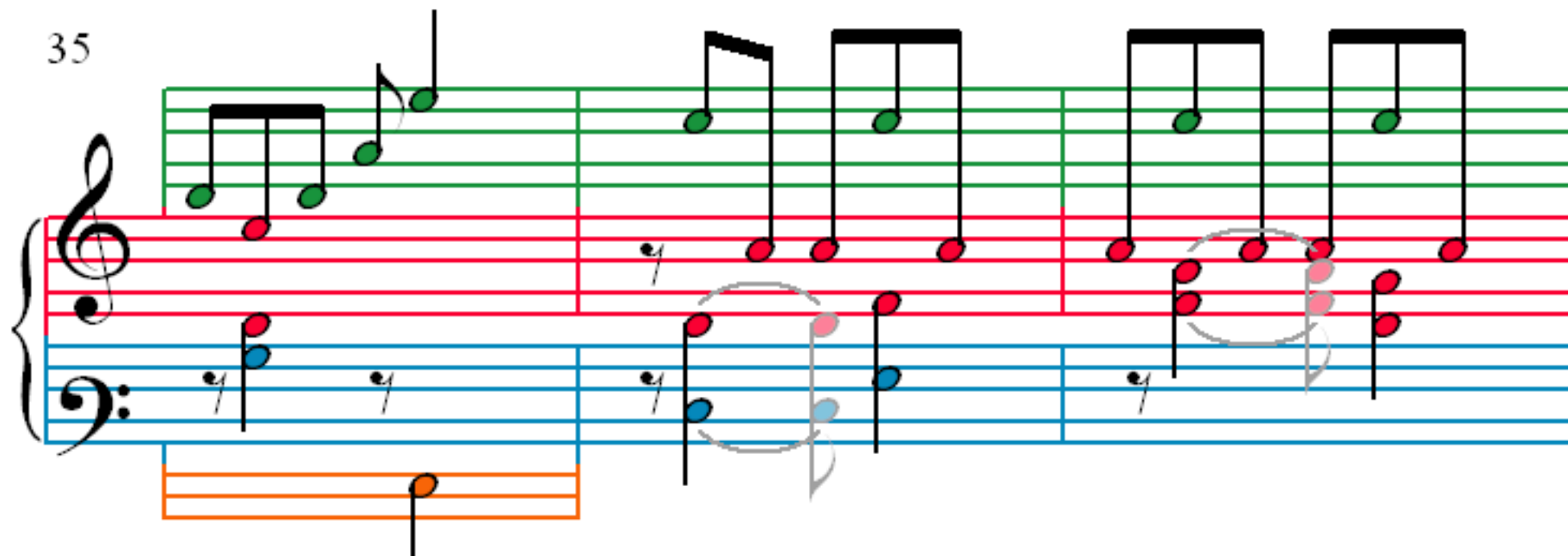
27



31



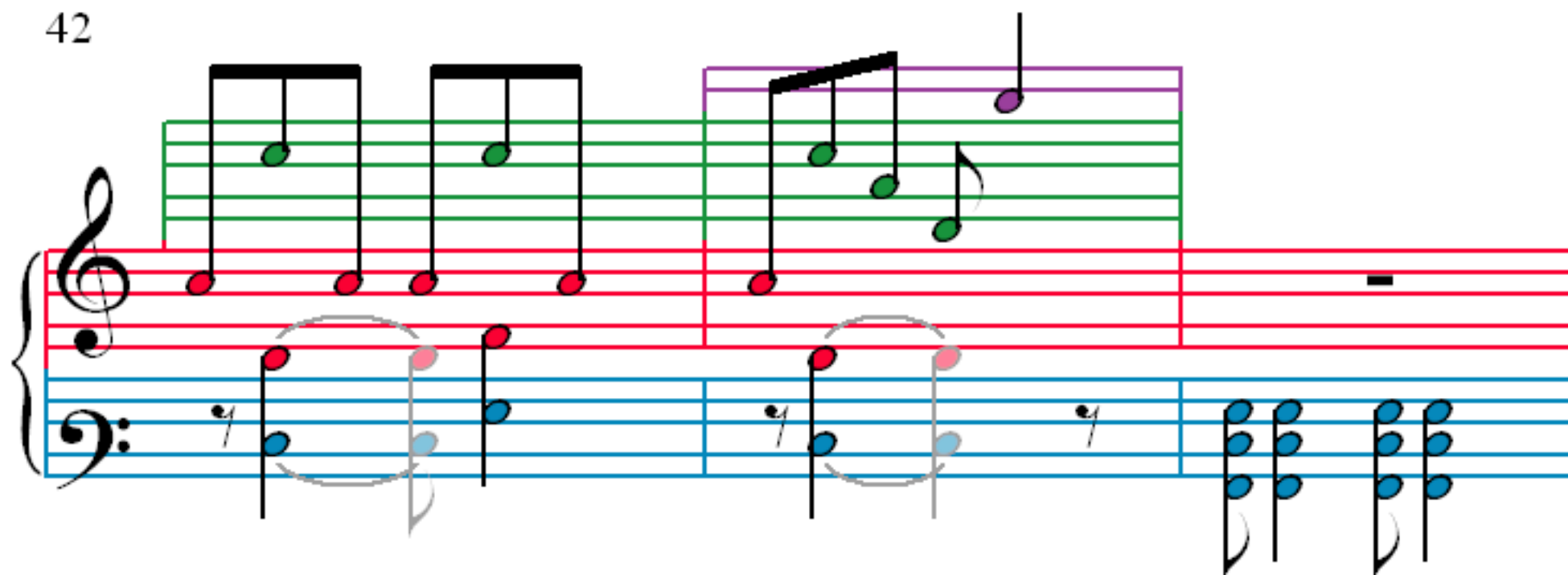
35



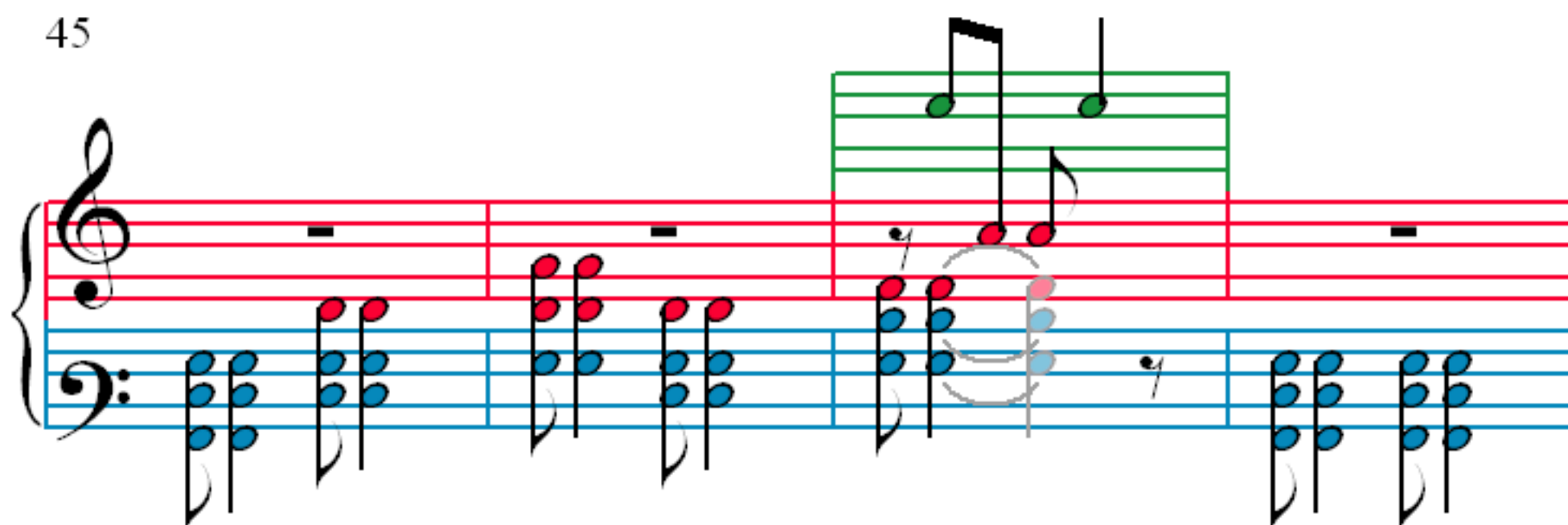
38



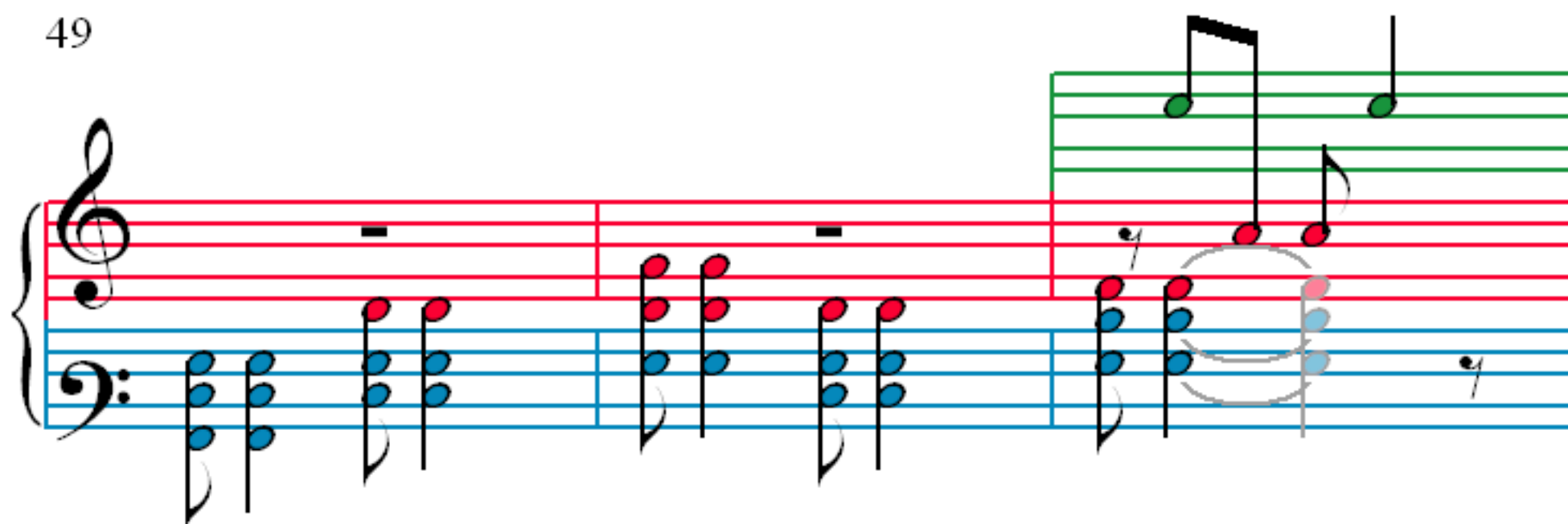
42



45



49



52

