

EL PERDÓN DE PLOËRMEL

J. F. F. Burgmüller (1806–1874)

1

4

7

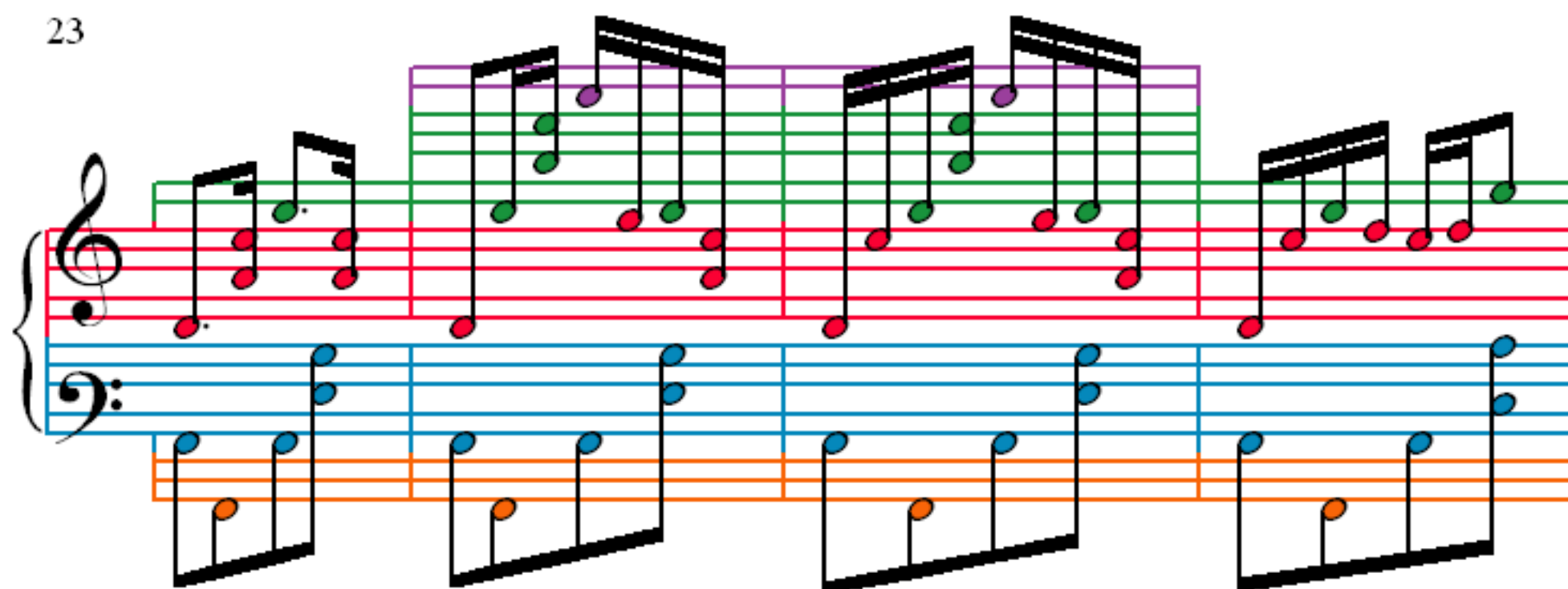
10

13

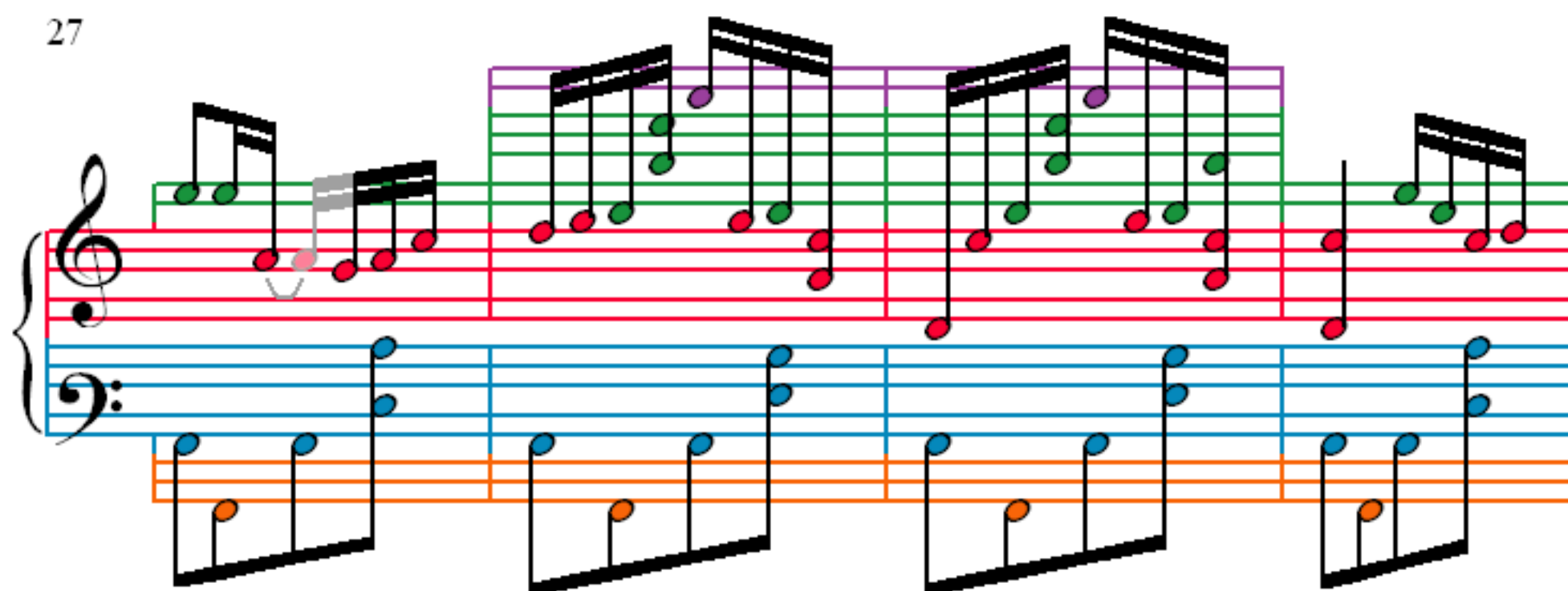
16

19

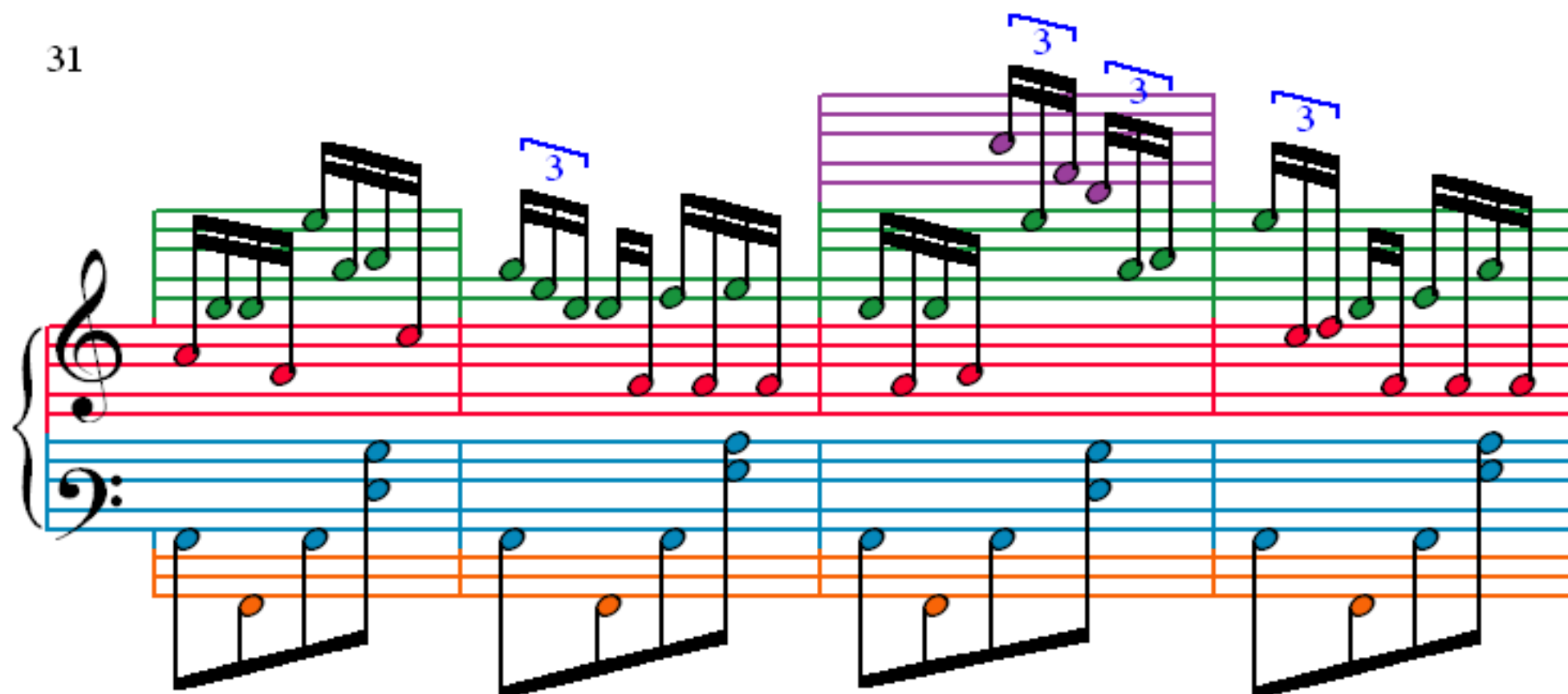
23



27



31



35

39

43

46

50

54

58

Measures 58-61 of the musical score. The system consists of three staves: a top staff with a treble clef and a purple line, and two lower staves (treble and bass clefs) with red and blue lines. The music features various note values, including eighth and sixteenth notes, and rests. The notation is color-coded: purple for the top staff, red for the middle staff, and blue for the bottom staff. Some notes are highlighted with colored dots (purple, red, blue, green, orange) and some are connected by curved lines.

62

Measures 62-64 of the musical score. The system consists of three staves: a top staff with a treble clef and a green line, and two lower staves (treble and bass clefs) with red and blue lines. The music features various note values, including eighth and sixteenth notes, and rests. The notation is color-coded: green for the top staff, red for the middle staff, and blue for the bottom staff. Some notes are highlighted with colored dots (green, red, blue, purple, orange) and some are connected by curved lines.

65

Measures 65-67 of the musical score. The system consists of three staves: a top staff with a treble clef and a green line, and two lower staves (treble and bass clefs) with red and blue lines. The music features various note values, including eighth and sixteenth notes, and rests. The notation is color-coded: green for the top staff, red for the middle staff, and blue for the bottom staff. Some notes are highlighted with colored dots (green, red, blue, purple, orange) and some are connected by curved lines.

68

Measures 68-71 of the musical score. The system consists of three staves: a top staff with a treble clef and a green line, and two lower staves (treble and bass clefs) with red and blue lines. The music features various note values, including eighth and sixteenth notes, and rests. The notation is color-coded: green for the top staff, red for the middle staff, and blue for the bottom staff. Some notes are highlighted with colored dots (green, red, blue, purple, orange) and some are connected by curved lines.

71

Measures 71-73 of the musical score. The system consists of three staves: a top staff with a treble clef, a middle staff with a bass clef, and a bottom staff with a bass clef. The music is written in a key with one flat (B-flat). The top staff features a melody with notes colored purple, green, and yellow, some with slurs. The middle staff has a bass line with notes colored red, pink, and blue, also with slurs. The bottom staff has a bass line with notes colored blue and grey, with slurs. Measure 72 is highlighted with a yellow box.

74

Measures 74-76 of the musical score. The system consists of three staves: a top staff with a treble clef, a middle staff with a bass clef, and a bottom staff with a bass clef. The music is written in a key with one flat (B-flat). The top staff features a melody with notes colored purple, green, and yellow, some with slurs. The middle staff has a bass line with notes colored red, pink, and blue, also with slurs. The bottom staff has a bass line with notes colored blue and grey, with slurs. Measure 75 is highlighted with a yellow box.

77

Measures 77-79 of the musical score. The system consists of three staves: a top staff with a treble clef, a middle staff with a bass clef, and a bottom staff with a bass clef. The music is written in a key with one flat (B-flat). The top staff features a melody with notes colored purple, green, and yellow, some with slurs. The middle staff has a bass line with notes colored red, pink, and blue, also with slurs. The bottom staff has a bass line with notes colored blue and grey, with slurs. Measure 78 is highlighted with a yellow box.

79

Measures 79-81 of the musical score. The system consists of three staves: a top staff with a treble clef, a middle staff with a bass clef, and a bottom staff with a bass clef. The music is written in a key with one flat (B-flat). The top staff features a melody with notes colored green, yellow, and red, some with slurs. The middle staff has a bass line with notes colored red, pink, and blue, also with slurs. The bottom staff has a bass line with notes colored blue and grey, with slurs. Measure 80 is highlighted with a yellow box.

82

Measures 82-85 of the musical score. The system consists of three staves: a top staff with a purple background, a middle staff with a red background, and a bottom staff with a blue background. The top staff contains a melody with eighth and sixteenth notes. The middle staff contains a bass line with eighth notes. The bottom staff contains a bass line with eighth notes and chords. The notation is color-coded to match the staff background.

86

Measures 86-89 of the musical score. The system consists of three staves: a top staff with a purple background, a middle staff with a red background, and a bottom staff with a blue background. The top staff contains a melody with eighth and sixteenth notes. The middle staff contains a bass line with eighth notes. The bottom staff contains a bass line with eighth notes and chords. The notation is color-coded to match the staff background.

90

Measures 90-93 of the musical score. The system consists of three staves: a top staff with a purple background, a middle staff with a red background, and a bottom staff with a blue background. The top staff contains a melody with eighth and sixteenth notes. The middle staff contains a bass line with eighth notes. The bottom staff contains a bass line with eighth notes and chords. The notation is color-coded to match the staff background.

94

98

102

106

Measures 106-108. Measure 106 features a green staff with two notes. Measures 107 and 108 show a treble and bass staff with various notes and rests, and an additional orange staff below the bass staff.

109

Measures 109-111. Measures 109 and 110 show a treble and bass staff with various notes and rests, and an additional orange staff below the bass staff. Measure 111 shows a treble and bass staff with various notes and rests, and an additional orange staff below the bass staff.

112

Measures 112-114. Measures 112 and 113 show a treble and bass staff with various notes and rests, and an additional orange staff below the bass staff. Measure 114 shows a treble and bass staff with various notes and rests, and an additional orange staff below the bass staff.

115

Measures 115-117. Measures 115 and 116 show a treble and bass staff with various notes and rests, and an additional orange staff below the bass staff. Measure 117 shows a treble and bass staff with various notes and rests, and an additional orange staff below the bass staff.

118

Measures 118-121. Treble clef: Melody with red and pink notes. Bass clef: Bass line with blue and orange notes. A green staff is present above the treble clef.

122

Measures 122-125. Treble clef: Melody with red and pink notes. Bass clef: Bass line with blue and orange notes. A green staff is present above the treble clef.

126

Measures 126-129. Treble clef: Melody with red and pink notes. Bass clef: Bass line with blue and orange notes. A green staff is present above the treble clef.

130

Measures 130-133. Treble clef: Melody with red and pink notes. Bass clef: Bass line with blue and orange notes. A green staff is present above the treble clef.

134

138

142

146

150

154

157

160

163

166

169

172

175

Measures 175-178. The score is written for piano with three staves: Treble, Bass, and a lower Bass staff. The Treble staff has a green staff line above it. The Bass staff has a blue staff line above it. The lower Bass staff has an orange staff line above it. The music features various note values, including eighth and sixteenth notes, and rests. The notes are color-coded: red, blue, green, and purple. The Treble staff has a red staff line below it. The Bass staff has a blue staff line below it. The lower Bass staff has an orange staff line below it.

179

Measures 179-182. The score continues with the same three-staff system. The Treble staff has a green staff line above it. The Bass staff has a blue staff line above it. The lower Bass staff has an orange staff line above it. The music features various note values, including eighth and sixteenth notes, and rests. The notes are color-coded: red, blue, green, and purple. The Treble staff has a red staff line below it. The Bass staff has a blue staff line below it. The lower Bass staff has an orange staff line below it.

183

Measures 183-186. The score continues with the same three-staff system. The Treble staff has a green staff line above it. The Bass staff has a blue staff line above it. The lower Bass staff has an orange staff line above it. The music features various note values, including eighth and sixteenth notes, and rests. The notes are color-coded: red, blue, green, and purple. The Treble staff has a red staff line below it. The Bass staff has a blue staff line below it. The lower Bass staff has an orange staff line below it.

187

190

193

196

199

Measures 199-202 of a musical score. The score is written for piano (p) and features a treble and bass staff. The treble staff has a green line and a red line. The bass staff has a blue line and an orange line. The music is in 4/4 time and consists of eighth and sixteenth notes, with some chords and rests. The notation is color-coded: green for the treble staff, blue for the bass staff, and red for the right hand. The notes are connected by slurs and ties.

203

Measures 203-206 of a musical score. The score is written for piano (p) and features a treble and bass staff. The treble staff has a green line and a red line. The bass staff has a blue line and an orange line. The music is in 4/4 time and consists of eighth and sixteenth notes, with some chords and rests. The notation is color-coded: green for the treble staff, blue for the bass staff, and red for the right hand. The notes are connected by slurs and ties.

207

Measures 207-210 of a musical score. The score is written for piano (p) and features a treble and bass staff. The treble staff has a green line and a red line. The bass staff has a blue line and an orange line. The music is in 4/4 time and consists of eighth and sixteenth notes, with some chords and rests. The notation is color-coded: green for the treble staff, blue for the bass staff, and red for the right hand. The notes are connected by slurs and ties.

211

Measures 211-214 of a musical score. The score is written for piano (p) and features a treble and bass staff. The treble staff has a green line and a red line. The bass staff has a blue line and an orange line. The music is in 4/4 time and consists of eighth and sixteenth notes, with some chords and rests. The notation is color-coded: green for the treble staff, blue for the bass staff, and red for the right hand. The notes are connected by slurs and ties.

214

217

220

223

226

Measures 226-228 of a musical score. The system consists of a grand staff (treble and bass clefs) and a separate staff below. The grand staff has a red line and a blue line. The separate staff has a blue line and an orange line. The notation includes various notes, rests, and accidentals, with some notes highlighted in green, red, and blue.

229

Measures 229-231 of a musical score. The system consists of a grand staff (treble and bass clefs) and a separate staff below. The grand staff has a red line and a blue line. The separate staff has a blue line and an orange line. The notation includes various notes, rests, and accidentals, with some notes highlighted in green, red, and blue.

232

Measures 232-234 of a musical score. The system consists of a grand staff (treble and bass clefs) and a separate staff below. The grand staff has a red line and a blue line. The separate staff has a blue line and an orange line. The notation includes various notes, rests, and accidentals, with some notes highlighted in green, red, and blue.

235

Measures 235-237 of a musical score. The system consists of a grand staff (treble and bass clefs) and a separate staff below. The grand staff has a red line and a blue line. The separate staff has a blue line and an orange line. The notation includes various notes, rests, and accidentals, with some notes highlighted in green, red, and blue.

238

Measures 238-241 of the musical score. The system consists of three staves: a top staff with a purple line, a middle staff with a red line, and a bottom staff with a blue line. The music is written in a treble clef. The melody in the top staff features a series of eighth and sixteenth notes, with some notes tied across measures. The accompaniment in the middle and bottom staves consists of chords and single notes, with some notes tied across measures. The bottom staff has an orange line at the end of the system.

242

Measures 242-245 of the musical score. The system consists of three staves: a top staff with a purple line, a middle staff with a red line, and a bottom staff with a blue line. The music is written in a treble clef. The melody in the top staff features a series of eighth and sixteenth notes, with some notes tied across measures. The accompaniment in the middle and bottom staves consists of chords and single notes, with some notes tied across measures. The bottom staff has an orange line at the end of the system.

246

Measures 246-249 of the musical score. The system consists of three staves: a top staff with a purple line, a middle staff with a red line, and a bottom staff with a blue line. The music is written in a treble clef. The melody in the top staff features a series of eighth and sixteenth notes, with some notes tied across measures. The accompaniment in the middle and bottom staves consists of chords and single notes, with some notes tied across measures. The bottom staff has an orange line at the end of the system.

250

253

256

259

262

265

268

271

274

277

280

283

286

288

291

294

297

Measures 297-298. The system consists of three staves. The top staff is a single melodic line with notes colored yellow, purple, and green. The middle and bottom staves are a grand staff (treble and bass clef) with red and blue notes respectively, featuring complex chordal textures and some ledger lines.

299

Measures 299-300. The system consists of three staves. The top staff continues the melodic line with purple and green notes. The grand staff below continues the complex harmonic accompaniment with red and blue notes.

301

Measures 301-303. The system consists of three staves. The top staff features a melodic line with purple and green notes. The grand staff below provides a dense harmonic accompaniment with red and blue notes.

304

Measures 304-306. The system consists of three staves. The top staff shows a melodic line with purple and green notes. The grand staff below continues the accompaniment, with some measures featuring rests in the bass line.

307

309

311

313

316

Measures 316-318 of a musical score. The system consists of a grand staff with a treble clef and a bass clef. The treble staff has a red line and a green line. The bass staff has a blue line and an orange line. The music is written in a 4/4 time signature. Measures 316 and 317 show a sequence of chords in the treble staff, with the bass staff providing a harmonic accompaniment. Measure 318 shows a continuation of the sequence, with the bass staff featuring a more complex accompaniment.

319

Measures 319-321 of a musical score. The system consists of a grand staff with a treble clef and a bass clef. The treble staff has a red line and a green line. The bass staff has a blue line and an orange line. The music is written in a 4/4 time signature. Measures 319 and 320 show a sequence of chords in the treble staff, with the bass staff providing a harmonic accompaniment. Measure 321 shows a continuation of the sequence, with the bass staff featuring a more complex accompaniment.

322

Measures 322-324 of a musical score. The system consists of a grand staff with a treble clef and a bass clef. The treble staff has a red line and a green line. The bass staff has a blue line and an orange line. The music is written in a 4/4 time signature. Measures 322 and 323 show a sequence of chords in the treble staff, with the bass staff providing a harmonic accompaniment. Measure 324 shows a continuation of the sequence, with the bass staff featuring a more complex accompaniment.

325

328

331