

# Nocturne No. 1 in B-flat minor

Op. 9, No. 1

F. F. Chopin (1810–1849)

1

3

6

9

Measures 9-11 of the piece. The notation is for a piano, with a treble and bass staff. The treble staff has a key signature of two flats (B-flat and E-flat) and a common time signature. The bass staff has a key signature of two flats (B-flat and E-flat) and a common time signature. The music is written in a 3/4 time signature. The notes are colored: green for the treble staff, blue for the bass staff, and orange for the bass staff. The notes are: 9: Treble (G4, A4, B4, C5), Bass (F3, G3, A3, B3); 10: Treble (D5, C5, B4, A4), Bass (C4, D4, E4, F4); 11: Treble (G4, A4, B4, C5), Bass (F3, G3, A3, B3).

12

Measures 12-14 of the piece. The notation is for a piano, with a treble and bass staff. The treble staff has a key signature of two flats (B-flat and E-flat) and a common time signature. The bass staff has a key signature of two flats (B-flat and E-flat) and a common time signature. The music is written in a 3/4 time signature. The notes are colored: green for the treble staff, blue for the bass staff, and orange for the bass staff. The notes are: 12: Treble (G4, A4, B4, C5), Bass (F3, G3, A3, B3); 13: Treble (D5, C5, B4, A4), Bass (C4, D4, E4, F4); 14: Treble (G4, A4, B4, C5), Bass (F3, G3, A3, B3).

15

Measures 15-17 of the piece. The notation is for a piano, with a treble and bass staff. The treble staff has a key signature of two flats (B-flat and E-flat) and a common time signature. The bass staff has a key signature of two flats (B-flat and E-flat) and a common time signature. The music is written in a 3/4 time signature. The notes are colored: green for the treble staff, blue for the bass staff, and orange for the bass staff. The notes are: 15: Treble (G4, A4, B4, C5), Bass (F3, G3, A3, B3); 16: Treble (D5, C5, B4, A4), Bass (C4, D4, E4, F4); 17: Treble (G4, A4, B4, C5), Bass (F3, G3, A3, B3).

18

Measures 18-20 of the piece. The notation is presented in three systems, each with a grand staff (treble and bass clefs). The notes are color-coded: green for the right hand (treble clef), blue for the left hand (bass clef), and orange for the pedal point (a single note in the bass clef). The music features a steady eighth-note accompaniment in the left hand and a melody in the right hand.

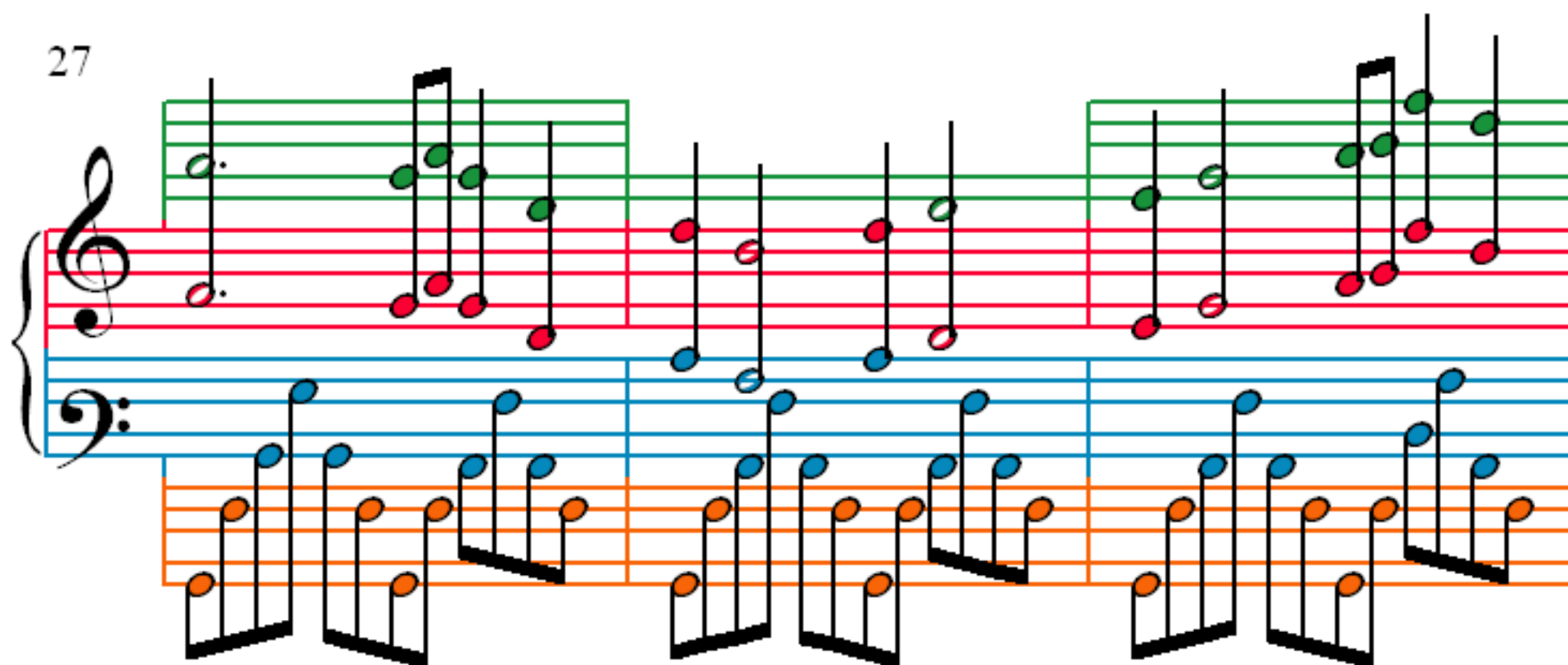
21

Measures 21-23 of the piece. The notation continues in three systems with a grand staff. The color-coding remains consistent: green for the right hand, blue for the left hand, and orange for the pedal point. The melodic line in the right hand shows some chromatic movement.

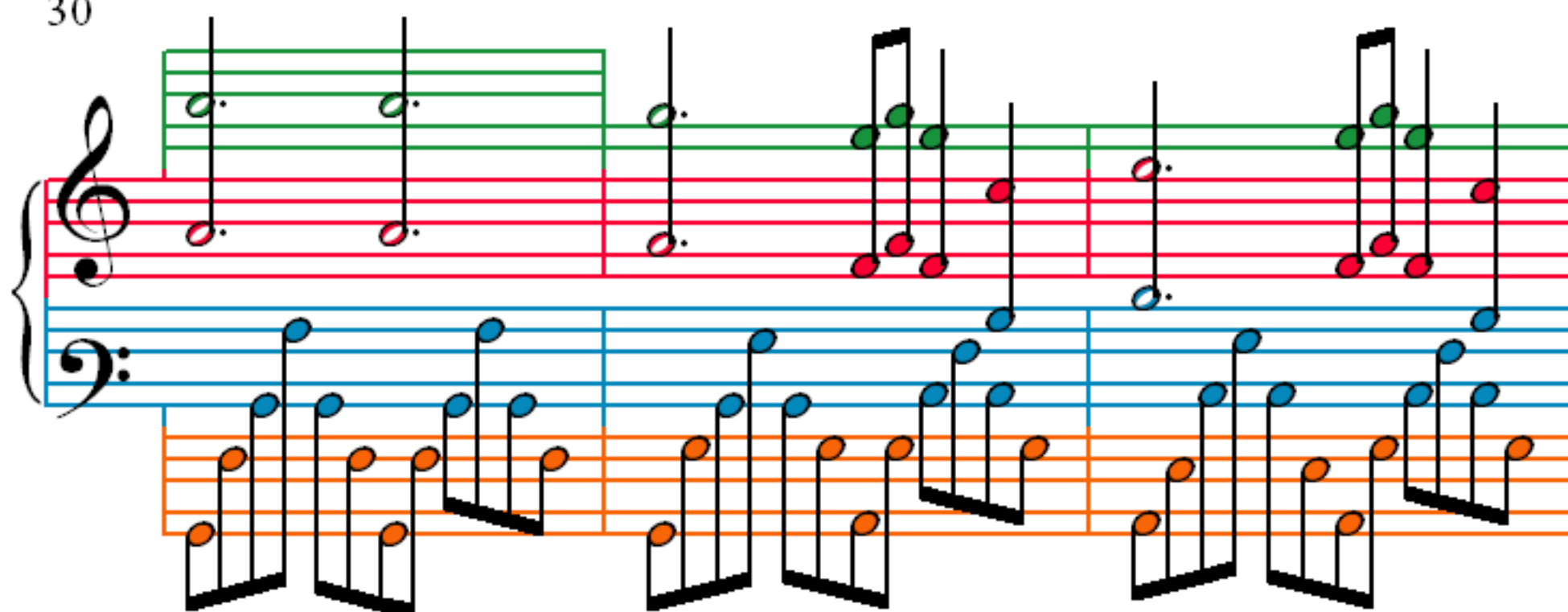
24

Measures 24-26 of the piece. The notation continues in three systems with a grand staff. The color-coding remains consistent: green for the right hand, blue for the left hand, and orange for the pedal point. The piece concludes with a final chord in measure 26.

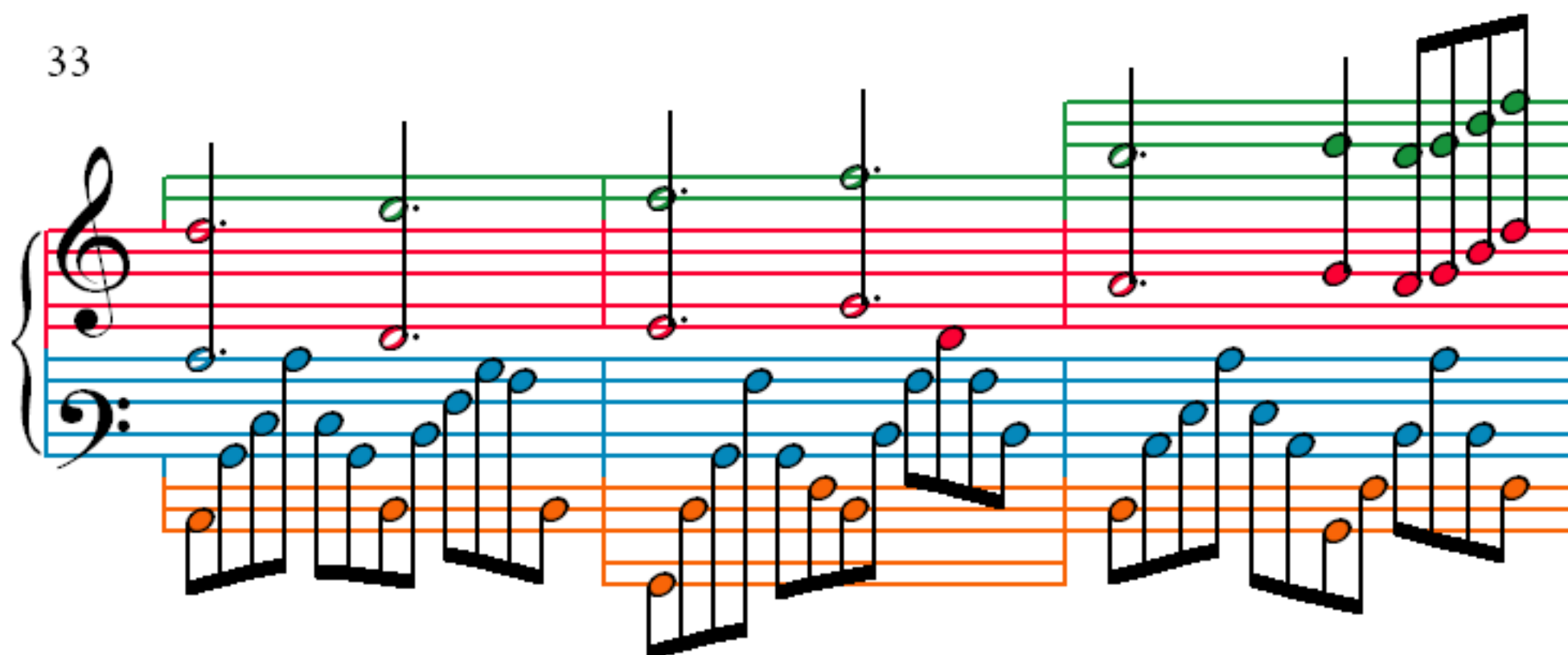
27



30



33



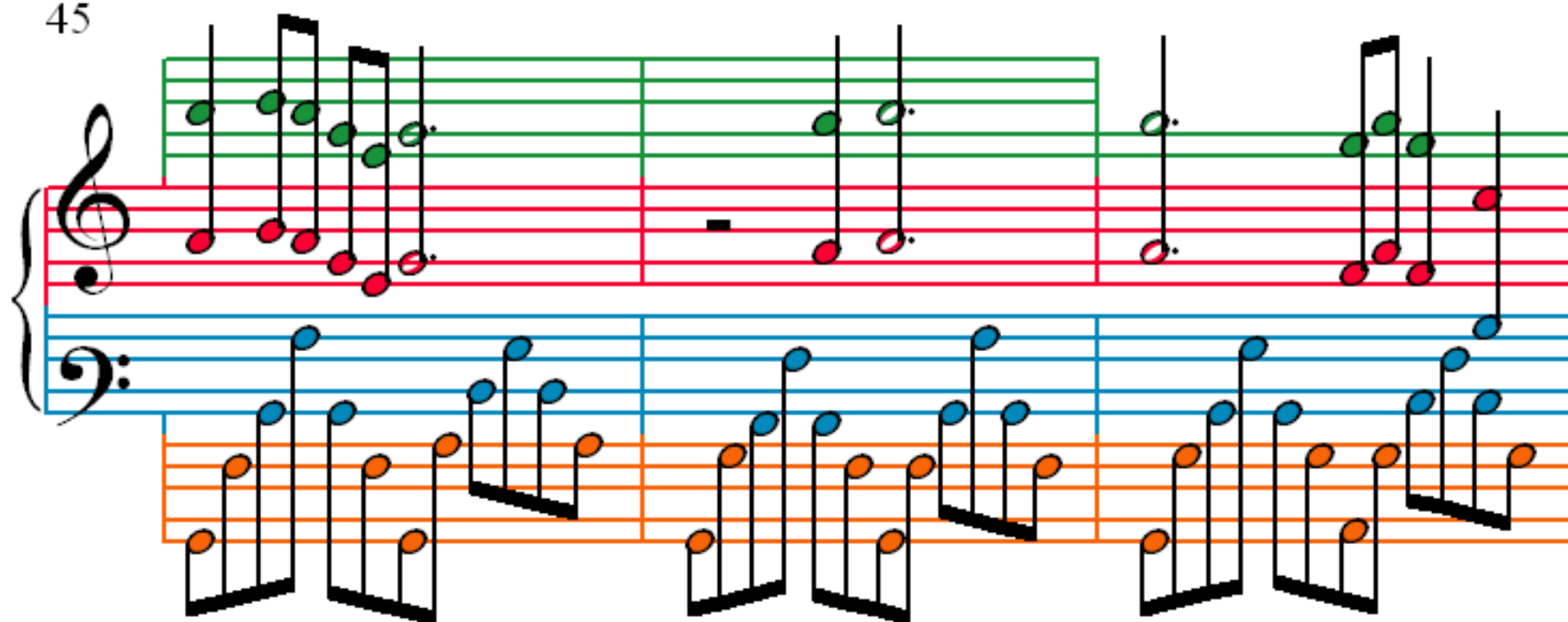
36

39

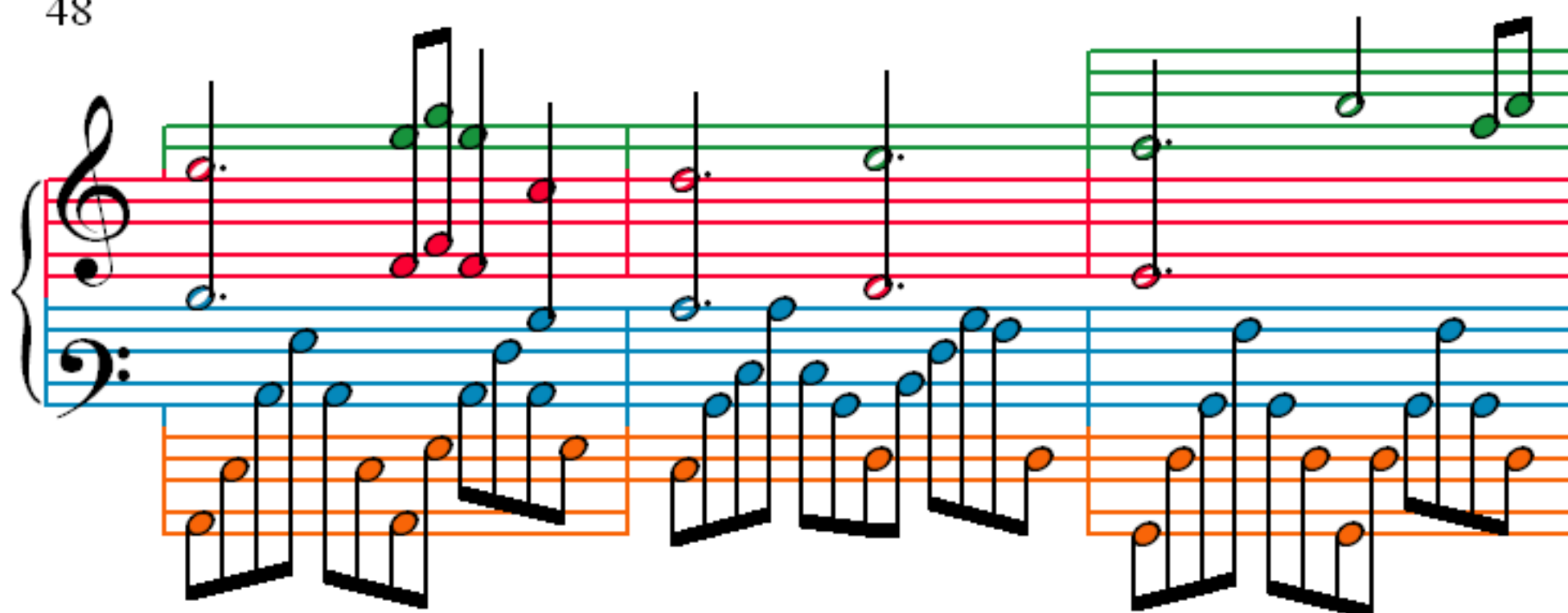
42



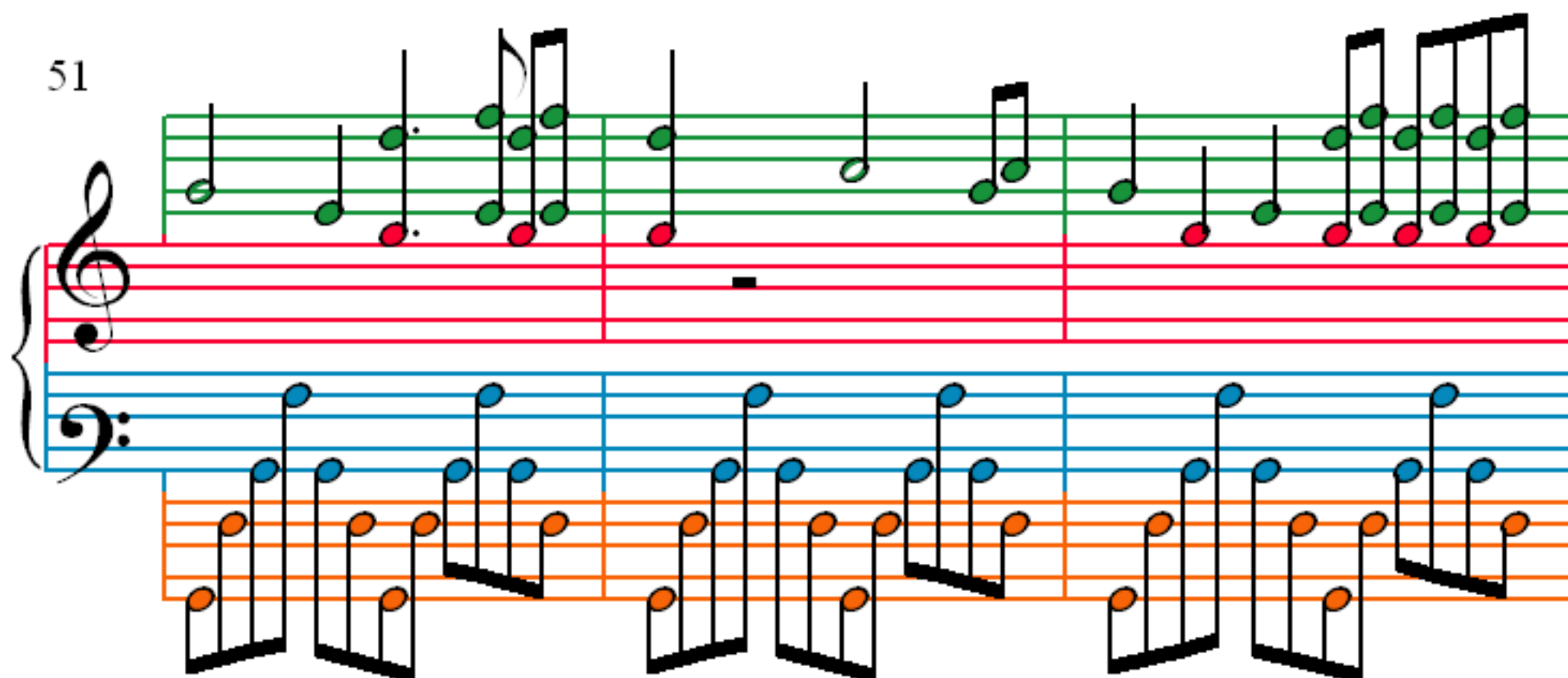
45



48



51



54

Measures 54-56 of the piece. The right hand (treble clef) features a melody with purple and green notes, while the left hand (bass clef) plays a continuous pattern of blue and orange notes. The notation is color-coded: purple for the first staff, green for the second, and red for the third.

57

Measures 57-59 of the piece. The right hand (treble clef) features a melody with red notes, while the left hand (bass clef) plays a continuous pattern of blue and orange notes. The notation is color-coded: red for the first staff, blue for the second, and orange for the third.

60

Measures 60-62 of the piece. The right hand (treble clef) features a melody with green notes, while the left hand (bass clef) plays a continuous pattern of blue and orange notes. The notation is color-coded: green for the first staff, red for the second, and blue for the third.

63

Measures 63-65 of the piece. The right hand (treble clef) features a melodic line with green notes, including a triplet of eighth notes in measure 63. The left hand (bass clef) has a steady eighth-note accompaniment with blue notes, and an orange note on the bottom line of the staff. A purple box highlights a chord in the right hand at the start of measure 64.

66

Measures 66-68. The right hand has a few green notes in measure 66, followed by rests in measures 67 and 68. The left hand continues with the eighth-note accompaniment pattern.

69

Measures 69-71. The right hand has a melodic line with green notes, including a triplet of eighth notes in measure 69. The left hand continues with the eighth-note accompaniment pattern. A purple box highlights a chord in the right hand at the start of measure 70.



72

Measures 72 and 73 of the piece. The notation is presented in three systems. The first system (measures 72-73) features a treble staff with a melodic line in purple and green, and a bass staff with a supporting line in blue and orange. The second system (measures 74-75) continues the melodic line in purple and green, with the bass staff in blue and orange. The third system (measures 76-77) shows the melodic line in purple and green, and the bass staff in blue and orange. The notation includes various note values, rests, and dynamic markings.

74

Measures 74 and 75 of the piece. The notation is presented in two systems. The first system (measures 74-75) features a treble staff with a melodic line in purple and green, and a bass staff with a supporting line in blue and orange. The second system (measures 76-77) continues the melodic line in purple and green, with the bass staff in blue and orange. The notation includes various note values, rests, and dynamic markings.

76

Measures 76 and 77 of the piece. The notation is presented in two systems. The first system (measures 76-77) features a treble staff with a melodic line in purple and green, and a bass staff with a supporting line in blue and orange. The second system (measures 78-79) continues the melodic line in purple and green, with the bass staff in blue and orange. The notation includes various note values, rests, and dynamic markings.

78

Measures 78 and 79 of the musical score. The score is written for piano, with a treble and bass staff. The treble staff features a melody with notes in green, purple, and red, and rests in grey. The bass staff features a melody with notes in blue and orange, and rests in black. The notes are connected by stems and beams, indicating a continuous melodic line. The background is divided into two systems, each with a yellow, purple, and green staff above the main piano staff.

80

Measures 80 and 81 of the musical score. The score is written for piano, with a treble and bass staff. The treble staff features a melody with notes in green, purple, and red, and rests in grey. The bass staff features a melody with notes in blue and orange, and rests in black. The notes are connected by stems and beams, indicating a continuous melodic line. The background is divided into two systems, each with a yellow, purple, and green staff above the main piano staff.

82

Measures 82 and 83 of the musical score. The score is written for piano, with a treble and bass staff. The treble staff features a melody with notes in green, purple, and red, and rests in grey. The bass staff features a melody with notes in blue and orange, and rests in black. The notes are connected by stems and beams, indicating a continuous melodic line. The background is divided into two systems, each with a yellow, purple, and green staff above the main piano staff.