

Nocturne 8 in Db Major

F. F. Chopin (1810–1849)

1

4

7

The image displays the first nine measures of Nocturne 8 in Db Major by Frédéric Chopin. The notation is presented in three systems, each corresponding to a measure number (1, 4, and 7) indicated on the left. Each system consists of a grand staff with a treble and bass clef. The right hand (treble clef) features a melody with dotted rhythms and eighth-note patterns, while the left hand (bass clef) plays a steady eighth-note accompaniment. The key signature of two flats (Bb and Eb) is shown at the beginning of the first system. The notation is color-coded: notes in the right hand are green, notes in the left hand are blue, and the bass line is highlighted with orange lines. The measures are grouped by vertical lines, and the systems are separated by measure numbers 1, 4, and 7.

10

13

16

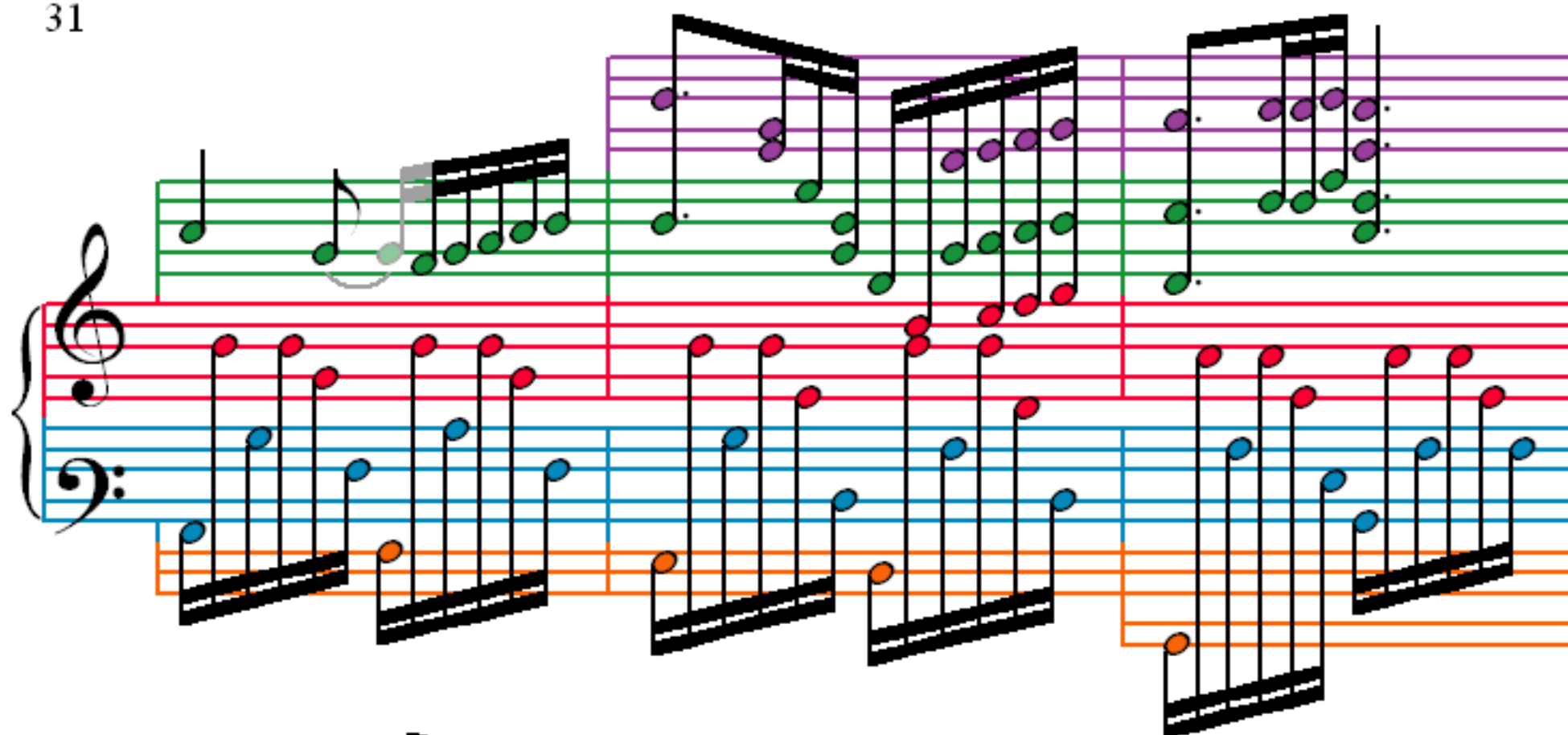
19

22

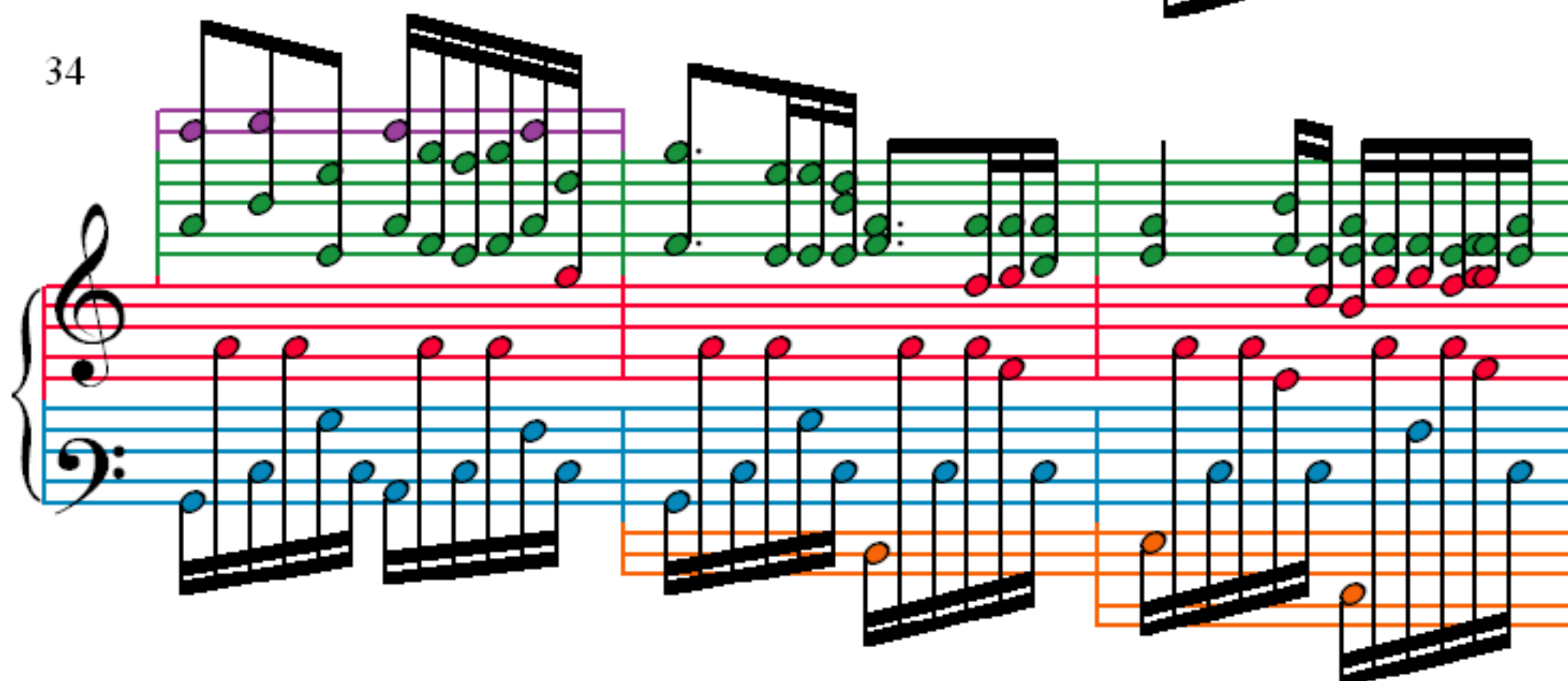
25

28

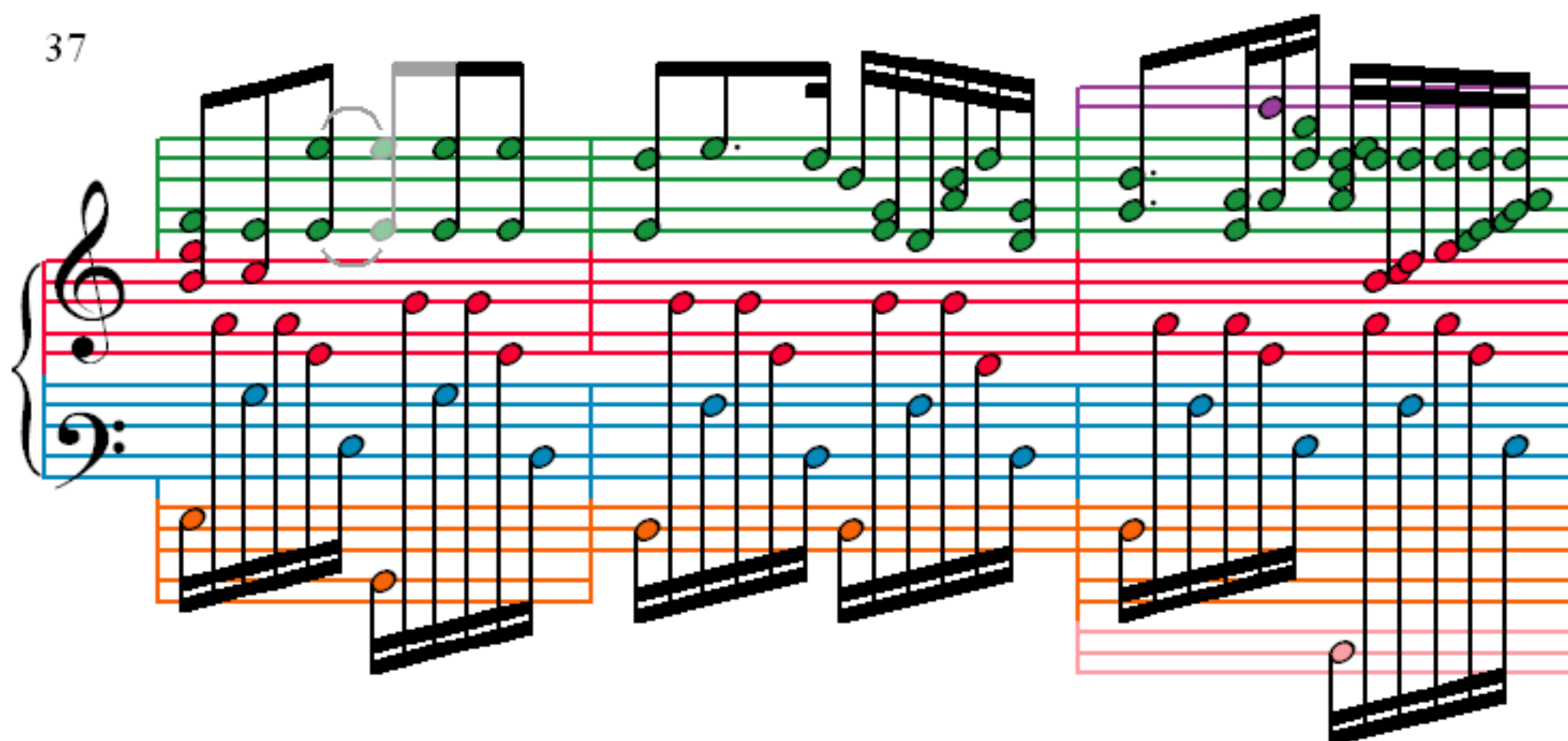
31



34



37



40

Measures 40-42 of Nocturne 8 in Db Major. The notation is presented in three systems. Each system consists of three staves: a top staff with a treble clef and a purple key signature, a middle staff with a red key signature, and a bottom staff with a blue key signature. The music features complex rhythmic patterns, including sixteenth and thirty-second notes, and rests. The notation is color-coded to match the staves: purple notes on the top staff, red notes on the middle staff, and blue notes on the bottom staff. The measures are grouped by vertical bar lines.

43

Measures 43-45 of Nocturne 8 in Db Major. The notation is presented in three systems. Each system consists of three staves: a top staff with a treble clef and a purple key signature, a middle staff with a red key signature, and a bottom staff with a blue key signature. The music features complex rhythmic patterns, including sixteenth and thirty-second notes, and rests. The notation is color-coded to match the staves: purple notes on the top staff, red notes on the middle staff, and blue notes on the bottom staff. The measures are grouped by vertical bar lines.

46

Measures 46-48 of Nocturne 8 in Db Major. The notation is presented in three systems. Each system consists of three staves: a top staff with a treble clef and a purple key signature, a middle staff with a red key signature, and a bottom staff with a blue key signature. The music features complex rhythmic patterns, including sixteenth and thirty-second notes, and rests. The notation is color-coded to match the staves: purple notes on the top staff, red notes on the middle staff, and blue notes on the bottom staff. The measures are grouped by vertical bar lines.

49

Measures 49-51 of Nocturne 8 in Db Major. The notation is presented in three systems. Each system consists of a grand staff (treble and bass clefs) and a separate staff below the bass clef. The grand staff has a red line for the treble clef and a blue line for the bass clef. The separate staff has an orange line. The notes are color-coded: red for the treble clef, blue for the bass clef, and orange for the separate staff. The notes are arranged in a sequence of eighth and sixteenth notes, with some measures featuring a 3/4 time signature change.

52

Measures 52-54 of Nocturne 8 in Db Major. The notation is presented in three systems. Each system consists of a grand staff (treble and bass clefs) and a separate staff below the bass clef. The grand staff has a red line for the treble clef and a blue line for the bass clef. The separate staff has an orange line. The notes are color-coded: red for the treble clef, blue for the bass clef, and orange for the separate staff. The notes are arranged in a sequence of eighth and sixteenth notes, with some measures featuring a 3/4 time signature change.

55

Measures 55-57 of Nocturne 8 in Db Major. The notation is presented in three systems. Each system consists of a grand staff (treble and bass clefs) and a separate staff below the bass clef. The grand staff has a red line for the treble clef and a blue line for the bass clef. The separate staff has an orange line. The notes are color-coded: red for the treble clef, blue for the bass clef, and orange for the separate staff. The notes are arranged in a sequence of eighth and sixteenth notes, with some measures featuring a 3/4 time signature change.

58

Measures 58-60 of Nocturne 8 in Db Major. The notation is presented in a system with three staves. The top staff is a single treble clef staff with green notes. The middle staff is a grand staff (treble and bass clefs) with red notes. The bottom staff is a single bass clef staff with blue notes. The notes are grouped into measures, with some measures containing multiple notes. The notation is color-coded: green for the top staff, red for the middle staff, and blue for the bottom staff. The notes are connected by stems, and some measures contain multiple notes.

61

Measures 61-63 of Nocturne 8 in Db Major. The notation is presented in a system with three staves. The top staff is a single treble clef staff with green notes. The middle staff is a grand staff (treble and bass clefs) with red notes. The bottom staff is a single bass clef staff with blue notes. The notes are grouped into measures, with some measures containing multiple notes. The notation is color-coded: green for the top staff, red for the middle staff, and blue for the bottom staff. The notes are connected by stems, and some measures contain multiple notes.

64

Measures 64-66 of Nocturne 8 in Db Major. The notation is presented in a system with three staves. The top staff is a single treble clef staff with green notes. The middle staff is a grand staff (treble and bass clefs) with red notes. The bottom staff is a single bass clef staff with blue notes. The notes are grouped into measures, with some measures containing multiple notes. The notation is color-coded: green for the top staff, red for the middle staff, and blue for the bottom staff. The notes are connected by stems, and some measures contain multiple notes.

68

Measures 68-70 of the piece. Measure 68 features a treble clef staff with a half note G4 (green), a quarter note A4 (purple), and a half note Bb4 (green), with a grey oval highlighting the A4 and Bb4. The bass clef staff has a half note G3 (blue), a quarter note A3 (blue), and a half note Bb3 (blue). Measure 69 has a treble clef staff with a half note G4 (green), a quarter note A4 (green), and a half note Bb4 (green), and a bass clef staff with a half note G3 (blue), a quarter note A3 (blue), and a half note Bb3 (blue). Measure 70 has a treble clef staff with a half note G4 (green), a quarter note A4 (green), and a half note Bb4 (green), and a bass clef staff with a half note G3 (blue), a quarter note A3 (blue), and a half note Bb3 (blue).

71

Measures 71-73 of the piece. Measure 71 features a treble clef staff with a half note G4 (green), a quarter note A4 (green), and a half note Bb4 (green), and a bass clef staff with a half note G3 (blue), a quarter note A3 (blue), and a half note Bb3 (blue). Measure 72 has a treble clef staff with a half note G4 (green), a quarter note A4 (green), and a half note Bb4 (green), and a bass clef staff with a half note G3 (blue), a quarter note A3 (blue), and a half note Bb3 (blue). Measure 73 has a treble clef staff with a half note G4 (green), a quarter note A4 (green), and a half note Bb4 (green), and a bass clef staff with a half note G3 (blue), a quarter note A3 (blue), and a half note Bb3 (blue).

74

Measures 74-76 of the piece. Measure 74 features a treble clef staff with a half note G4 (green), a quarter note A4 (green), and a half note Bb4 (green), and a bass clef staff with a half note G3 (blue), a quarter note A3 (blue), and a half note Bb3 (blue). Measure 75 has a treble clef staff with a half note G4 (green), a quarter note A4 (green), and a half note Bb4 (green), and a bass clef staff with a half note G3 (blue), a quarter note A3 (blue), and a half note Bb3 (blue). Measure 76 has a treble clef staff with a half note G4 (green), a quarter note A4 (green), and a half note Bb4 (green), and a bass clef staff with a half note G3 (blue), a quarter note A3 (blue), and a half note Bb3 (blue).