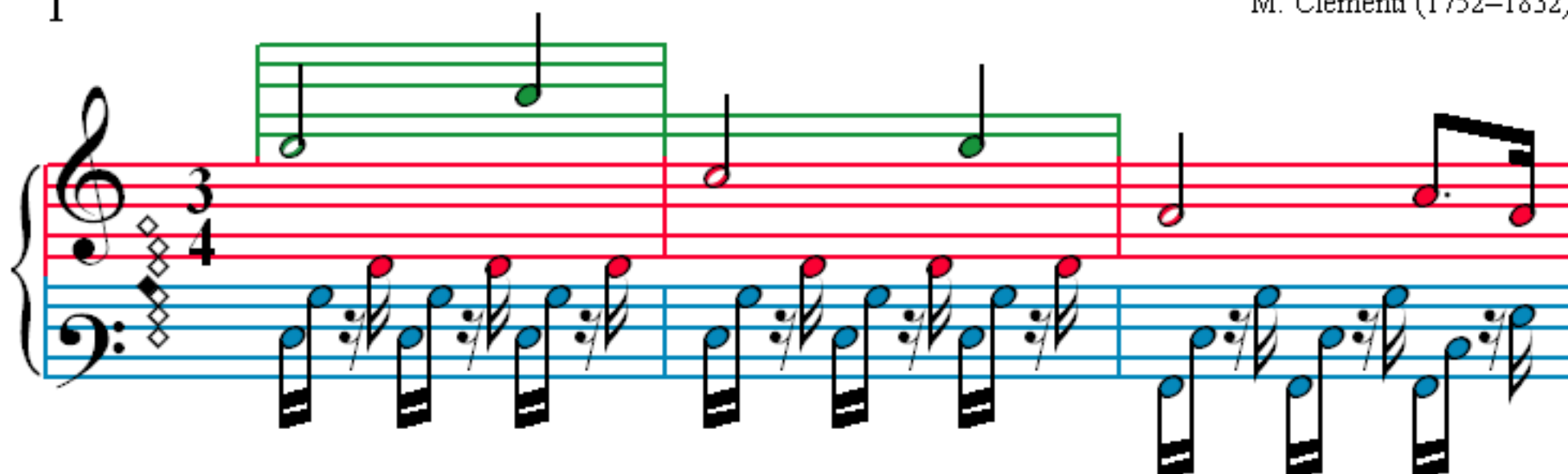


# Sonatina-1-1

M. Clementi (1752–1832)

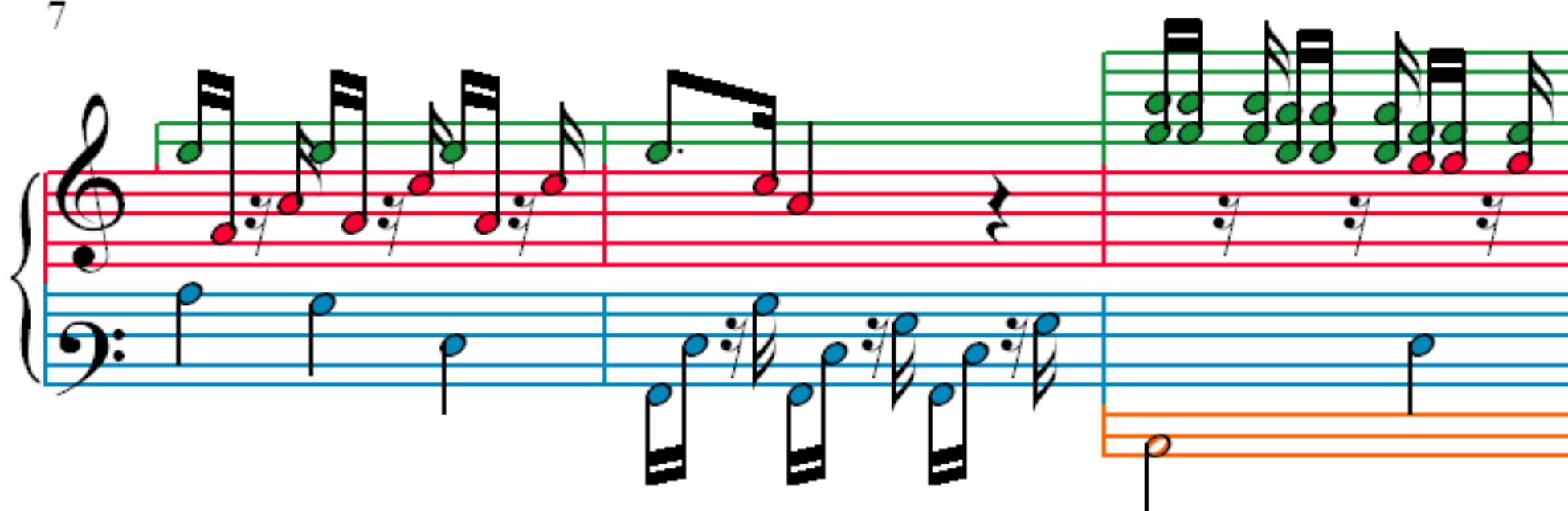
1



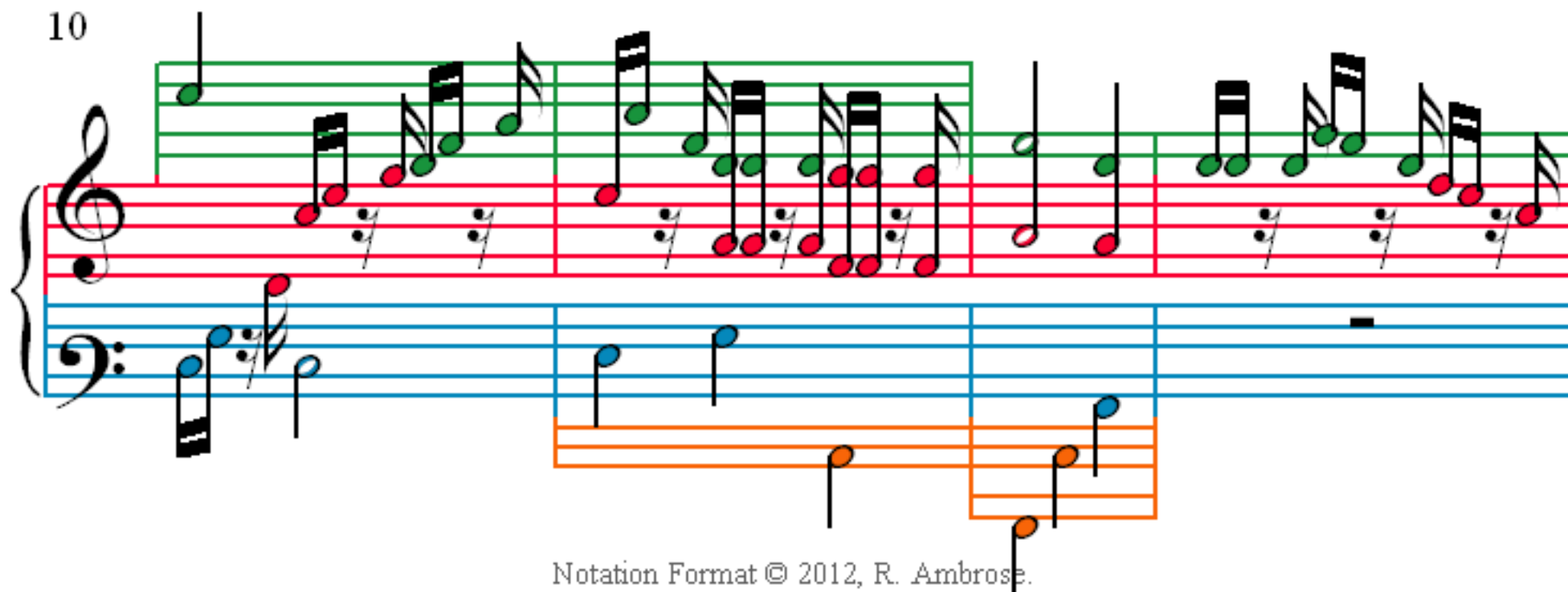
4



7



10



14

The musical score for Example 14 consists of two staves. The upper staff is in treble clef and contains a sequence of notes and rests, with some notes marked with a green dot. The lower staff is in bass clef and contains a sequence of notes and rests, with some notes marked with a blue dot. The score is divided into measures by vertical bar lines.

17

The musical score for Example 17 consists of two staves. The top staff is in treble clef and the bottom staff is in bass clef. The music is written in a key with one sharp (F#) and a 3/4 time signature. The top staff features a series of eighth and sixteenth notes, with some notes marked with a green dot. The bottom staff features a series of eighth and sixteenth notes, with some notes marked with a blue dot. The score is divided into measures by vertical bar lines.

A musical score for the song 'The Rose Tree'. The score is written for a piano, with a treble clef on the upper staff and a bass clef on the lower staff. The key signature is one flat (B-flat), and the time signature is 4/4. The melody is written in the treble staff, and the accompaniment is written in the bass staff. The melody consists of a series of eighth and sixteenth notes, with a final measure containing a quarter note and a half note. The accompaniment consists of a steady eighth-note pattern in the left hand, with a final measure containing a quarter note and a half note. The score is numbered 20 in the top left corner.

23

The musical score for Example 23 consists of two staves. The treble staff (top) features a melody with a green box highlighting a section from measure 2 to measure 4. The bass staff (bottom) features an accompaniment with a blue box highlighting a section from measure 2 to measure 4. The notation includes various note values, rests, and dynamic markings.