

# Dussek Op46 5

Six sonates faciles pour le Piano Forte (V)

J. L. Dussek (1760–1812)

1

4

7

10

The image displays the first four systems of musical notation for Dussek's Op. 46, No. 5. Each system consists of a grand staff with a treble and bass clef. The notation is color-coded: red for the right hand (treble clef) and blue for the left hand (bass clef). The first system (measures 1-3) features a treble staff with a key signature of one sharp (F#) and a 3/4 time signature. The second system (measures 4-6) shows a treble staff with a key signature of one sharp and a 3/4 time signature. The third system (measures 7-9) shows a treble staff with a key signature of one sharp and a 3/4 time signature. The fourth system (measures 10-12) shows a treble staff with a key signature of one sharp and a 3/4 time signature. The notation includes various musical symbols such as notes, rests, and accidentals, with some notes highlighted in green or purple. The systems are numbered 1, 4, 7, and 10 at the beginning of each system.

13

16

19

22

25

28

31

34

37

Measures 37-39. Treble clef: G4 (half), A4 (quarter), B4 (half). Bass clef: G3 (half), A3 (quarter), B3 (half). A half note G3 is written below the bass staff.

40

Measures 40-42. Treble clef: G4 (half), A4 (quarter), B4 (half). Bass clef: G3 (half), A3 (quarter), B3 (half). A half note G3 is written below the bass staff.

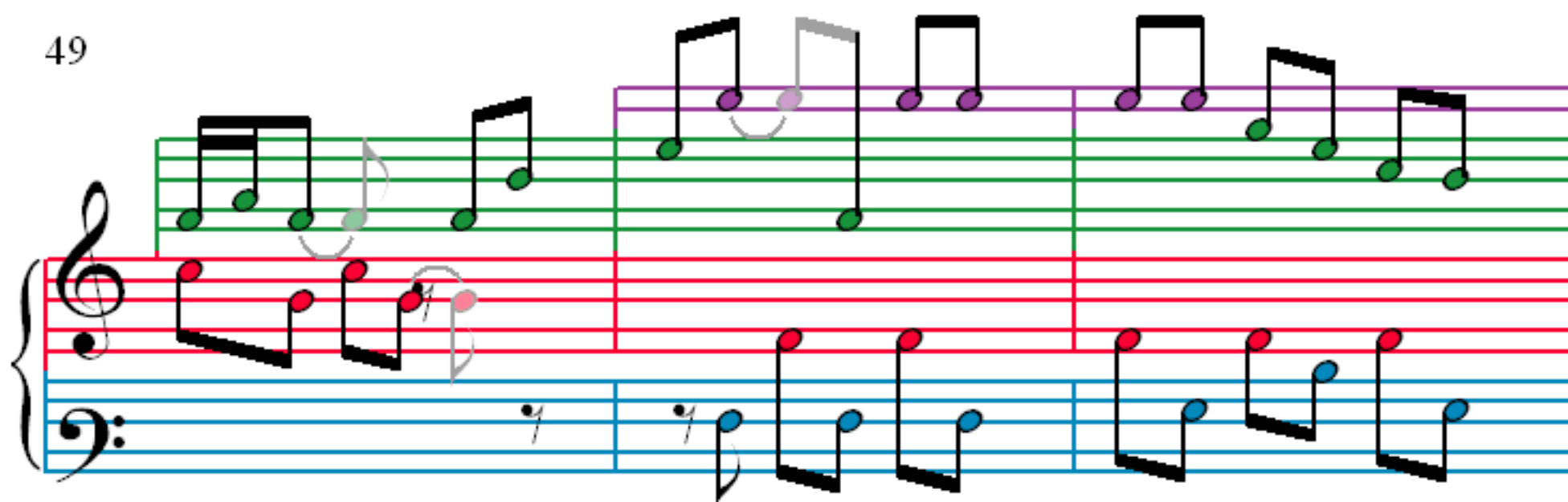
43

Measures 43-45. Treble clef: G4 (half), A4 (quarter), B4 (half). Bass clef: G3 (half), A3 (quarter), B3 (half). A half note G3 is written below the bass staff.

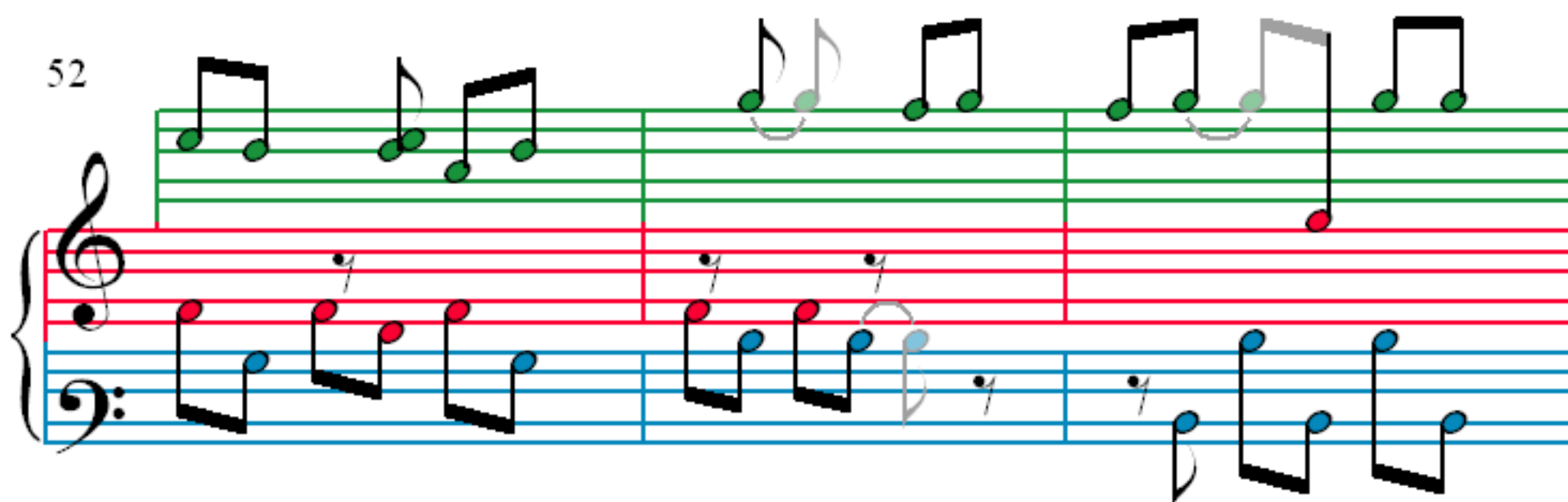
46

Measures 46-48. Treble clef: G4 (half), A4 (quarter), B4 (half). Bass clef: G3 (half), A3 (quarter), B3 (half). A half note G3 is written below the bass staff.

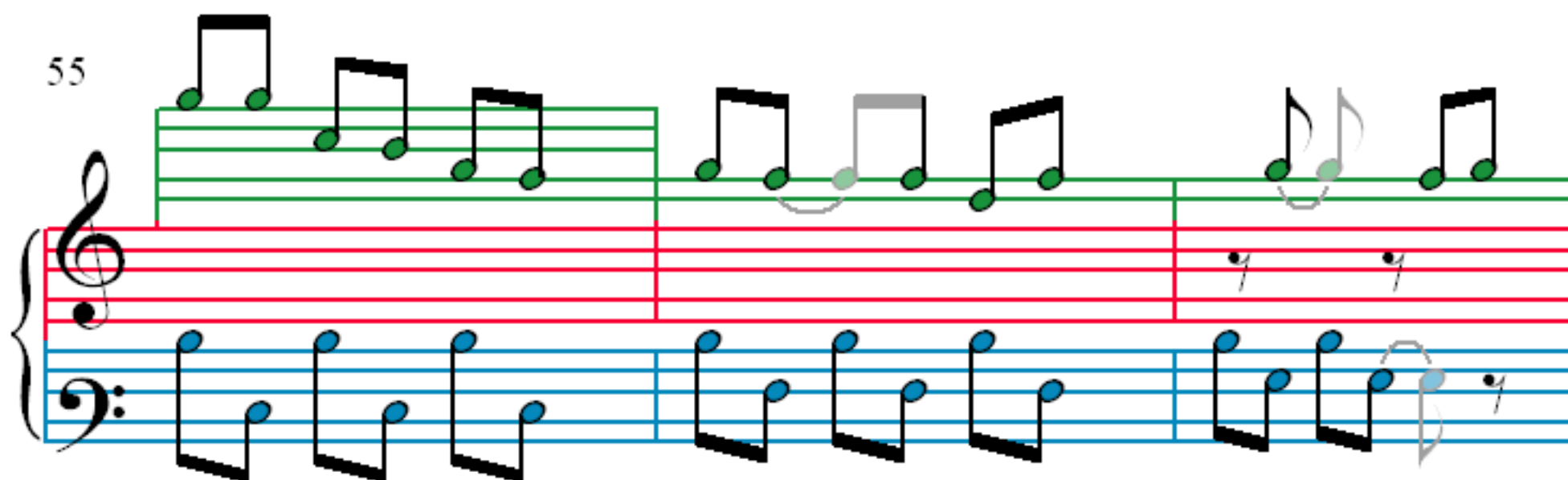
49



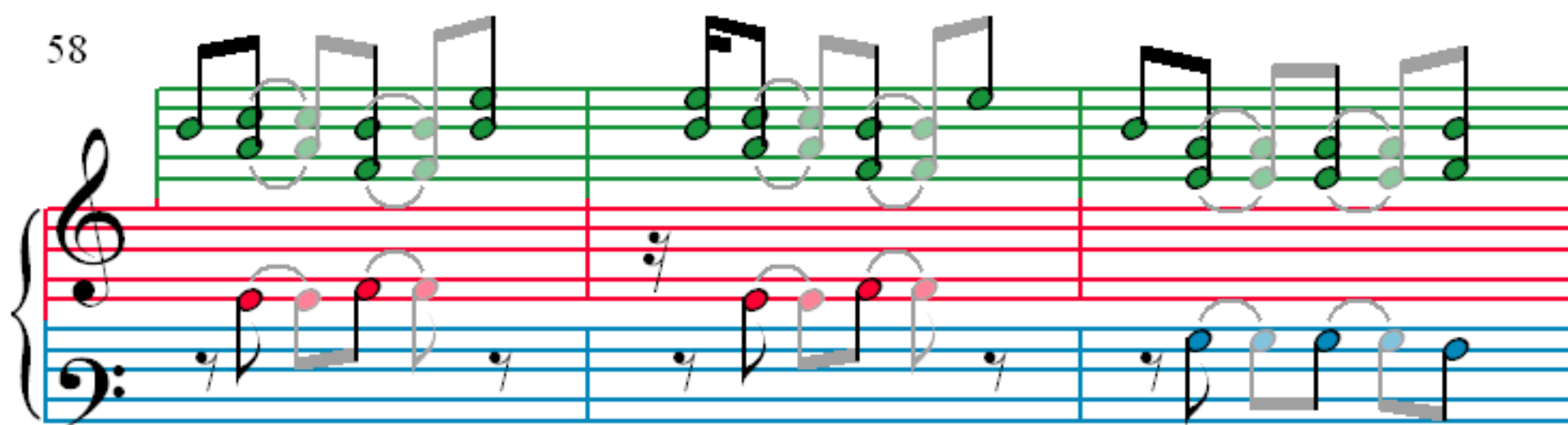
52



55



58



61

64

67

70



73

76

79

82

85

Measures 85-86. Treble clef: G4 (green), A4 (green), B4 (green), C5 (green), D5 (purple), E5 (purple), F5 (green), G5 (green), A5 (green), B5 (green), C6 (green), D6 (green). Bass clef: G2 (blue), F2 (blue), E2 (blue), D2 (blue), C2 (blue), B1 (blue), A1 (blue), G1 (blue), F1 (blue), E1 (blue), D1 (blue), C1 (blue).

87

Measures 87-88. Treble clef: G4 (green), A4 (green), B4 (green), C5 (green), D5 (purple), E5 (purple), F5 (green), G5 (green), A5 (green), B5 (green), C6 (green), D6 (green). Bass clef: G2 (blue), F2 (blue), E2 (blue), D2 (blue), C2 (blue), B1 (blue), A1 (blue), G1 (blue), F1 (blue), E1 (blue), D1 (blue), C1 (blue).

89

Measures 89-90. Treble clef: G4 (green), A4 (green), B4 (green), C5 (green), D5 (purple), E5 (purple), F5 (green), G5 (green), A5 (green), B5 (green), C6 (green), D6 (green). Bass clef: G2 (blue), F2 (blue), E2 (blue), D2 (blue), C2 (blue), B1 (blue), A1 (blue), G1 (blue), F1 (blue), E1 (blue), D1 (blue), C1 (blue).

91

Measures 91-92. Treble clef: G4 (green), A4 (green), B4 (green), C5 (green), D5 (purple), E5 (purple), F5 (green), G5 (green), A5 (green), B5 (green), C6 (green), D6 (green). Bass clef: G2 (blue), F2 (blue), E2 (blue), D2 (blue), C2 (blue), B1 (blue), A1 (blue), G1 (blue), F1 (blue), E1 (blue), D1 (blue), C1 (blue).