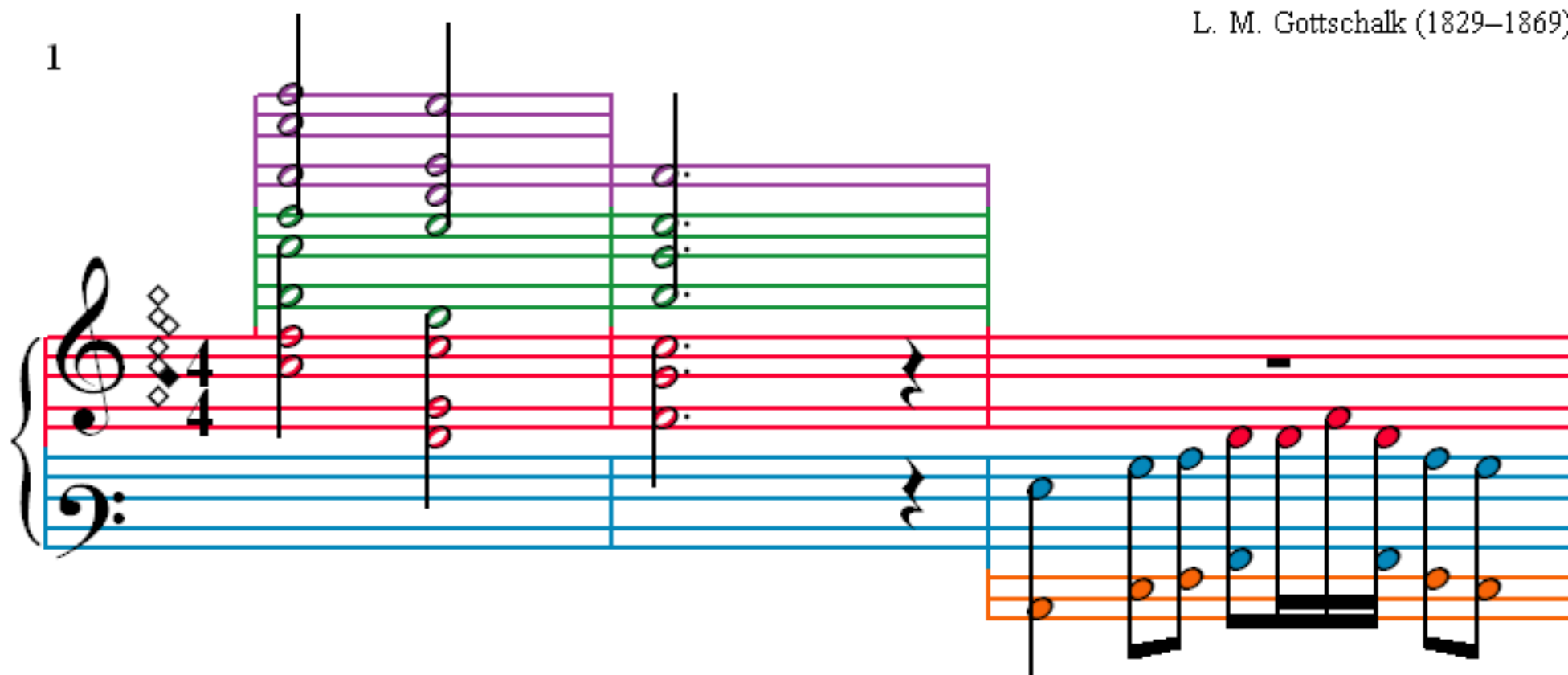


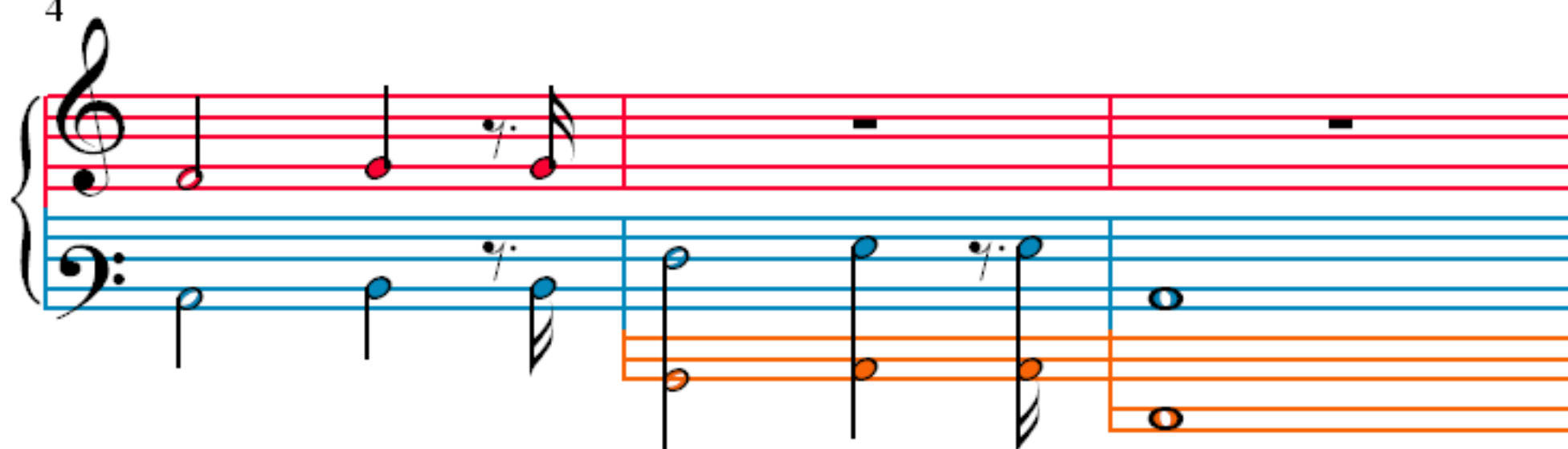
The Dying Swan

L. M. Gottschalk (1829–1869)

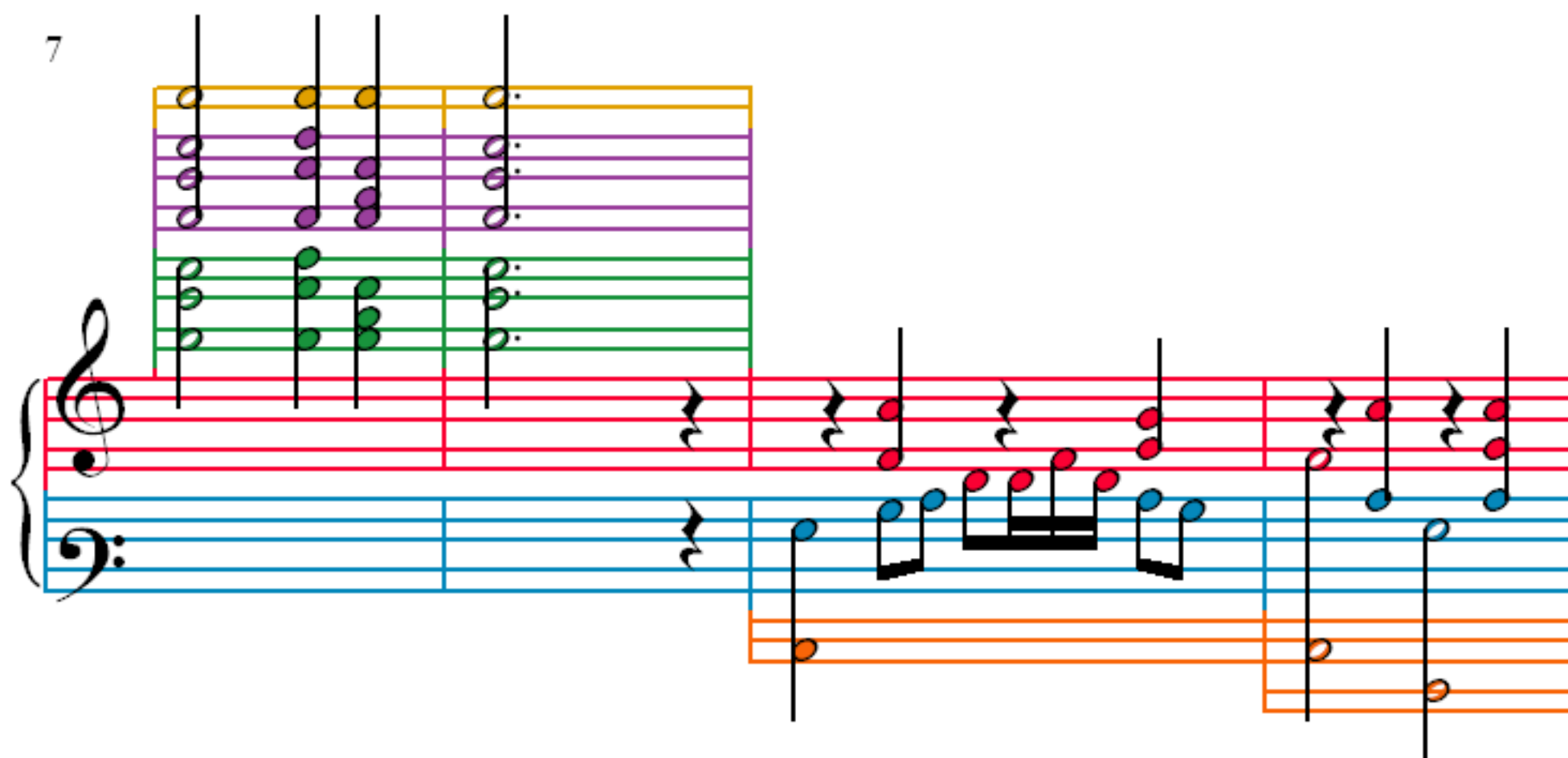
1



4



7



11

Measures 11-13 of the musical score. Measure 11 features a treble clef with a whole note chord (F4, A4) and a bass clef with a whole note chord (C3, E2). Measure 12 features a treble clef with a whole note chord (F4, A4) and a bass clef with a whole note chord (C3, E2). Measure 13 features a treble clef with a whole note chord (F4, A4) and a bass clef with a whole note chord (C3, E2). A green staff with a treble clef is positioned above the main staff, containing a whole note chord (F4, A4). An orange staff with a bass clef is positioned below the main staff, containing a whole note chord (C3, E2).

14

Measures 14-16 of the musical score. Measure 14 features a treble clef with a whole note chord (F4, A4) and a bass clef with a whole note chord (C3, E2). Measure 15 features a treble clef with a whole note chord (F4, A4) and a bass clef with a whole note chord (C3, E2). Measure 16 features a treble clef with a whole note chord (F4, A4) and a bass clef with a whole note chord (C3, E2). A green staff with a treble clef is positioned above the main staff, containing a whole note chord (F4, A4). An orange staff with a bass clef is positioned below the main staff, containing a whole note chord (C3, E2).

17

Measures 17-19 of the musical score. Measure 17 features a treble clef with a whole note chord (F4, A4) and a bass clef with a whole note chord (C3, E2). Measure 18 features a treble clef with a whole note chord (F4, A4) and a bass clef with a whole note chord (C3, E2). Measure 19 features a treble clef with a whole note chord (F4, A4) and a bass clef with a whole note chord (C3, E2). A green staff with a treble clef is positioned above the main staff, containing a whole note chord (F4, A4). An orange staff with a bass clef is positioned below the main staff, containing a whole note chord (C3, E2).

20

Measures 20-22 of the musical score. The system features a grand staff with a treble and bass clef, and a lower system with two staves. The treble staff has a red staff line and a blue staff line. The bass staff has a blue staff line and a red staff line. The lower system has an orange staff line and a pink staff line. The notation includes various note values, rests, and accidentals. A 3/4 time signature is present at the beginning of measure 21. A 3/4 time signature is also present at the beginning of measure 22. A 3/4 time signature is also present at the beginning of measure 23.

23

Measures 23-25 of the musical score. The system features a grand staff with a treble and bass clef, and a lower system with two staves. The treble staff has a red staff line and a blue staff line. The bass staff has a blue staff line and a red staff line. The lower system has an orange staff line and a pink staff line. The notation includes various note values, rests, and accidentals. A 3/4 time signature is present at the beginning of measure 23. A 3/4 time signature is also present at the beginning of measure 24. A 3/4 time signature is also present at the beginning of measure 25.

26

Measures 26-28 of the musical score. The system features a grand staff with a treble and bass clef, and a lower system with two staves. The treble staff has a red staff line and a blue staff line. The bass staff has a blue staff line and a red staff line. The lower system has an orange staff line and a pink staff line. The notation includes various note values, rests, and accidentals. A 3/4 time signature is present at the beginning of measure 26. A 3/4 time signature is also present at the beginning of measure 27. A 3/4 time signature is also present at the beginning of measure 28.

29

Measures 29-31 of the musical score. The notation is presented in three systems. The first system (measures 29-30) features a treble staff with green notes, a middle staff with red notes, and a bass staff with blue notes. The second system (measure 31) continues this pattern. The third system (measures 32-33) shows a continuation of the melody in the treble staff, with the middle and bass staves providing harmonic support. The notes are color-coded: green for the treble staff, red for the middle staff, and blue for the bass staff. The notation includes various note values, rests, and accidentals.

32

Measures 32-34 of the musical score. The notation is presented in three systems. The first system (measures 32-33) features a treble staff with purple notes, a middle staff with green notes, and a bass staff with blue notes. The second system (measure 34) continues this pattern. The third system (measures 35-36) shows a continuation of the melody in the treble staff, with the middle and bass staves providing harmonic support. The notes are color-coded: purple for the treble staff, green for the middle staff, and blue for the bass staff. The notation includes various note values, rests, and accidentals.

35

Measures 35-37 of the musical score. The system features three staves: a top staff with purple and green notes, a middle grand staff (treble and bass clefs) with red and blue notes, and a bottom staff with orange notes. Measure 35 shows a series of chords in the top staff and a descending eighth-note pattern in the bass. Measure 36 includes a fermata on a note in the treble and a triplet of eighth notes in the bass. Measure 37 features a melodic line in the treble and a single note in the bass.

38

Measures 38-40 of the musical score. Measure 38 shows a melodic line in the treble and a single note in the bass. Measure 39 includes a 4/4 time signature change and a triplet of eighth notes in the bass. Measure 40 features a melodic line in the treble and a single note in the bass.

41

Measures 41-43 of the musical score. Measure 41 shows a melodic line in the treble and a single note in the bass. Measure 42 features a melodic line in the treble and a single note in the bass. Measure 43 shows a melodic line in the treble and a single note in the bass.

45

Measures 45-47 of the musical score. The system consists of three staves: a top staff with purple and green notes, a middle staff with red notes, and a bottom staff with blue and orange notes. The notation includes various musical symbols such as treble and bass clefs, stems, beams, and rests. The measures are grouped by vertical bar lines.

48

Measures 48-50 of the musical score. The system consists of three staves: a top staff with purple and green notes, a middle staff with red notes, and a bottom staff with blue and orange notes. The notation includes various musical symbols such as treble and bass clefs, stems, beams, and rests. The measures are grouped by vertical bar lines.

51

Measures 51-53 of the musical score. The system consists of three staves: a top staff with purple and green notes, a middle staff with red notes, and a bottom staff with blue and orange notes. The notation includes various musical symbols such as treble and bass clefs, stems, beams, and rests. The measures are grouped by vertical bar lines.

54

Measures 54-56 of the musical score. The system consists of three staves: a top staff with a treble clef, a middle staff with a treble clef, and a bottom staff with a bass clef. The top staff features a series of chords in purple and green. The middle staff has a treble clef and contains a sequence of eighth notes in red. The bottom staff has a bass clef and contains a sequence of eighth notes in blue. A 3/4 time signature is present in the middle staff at measure 55.

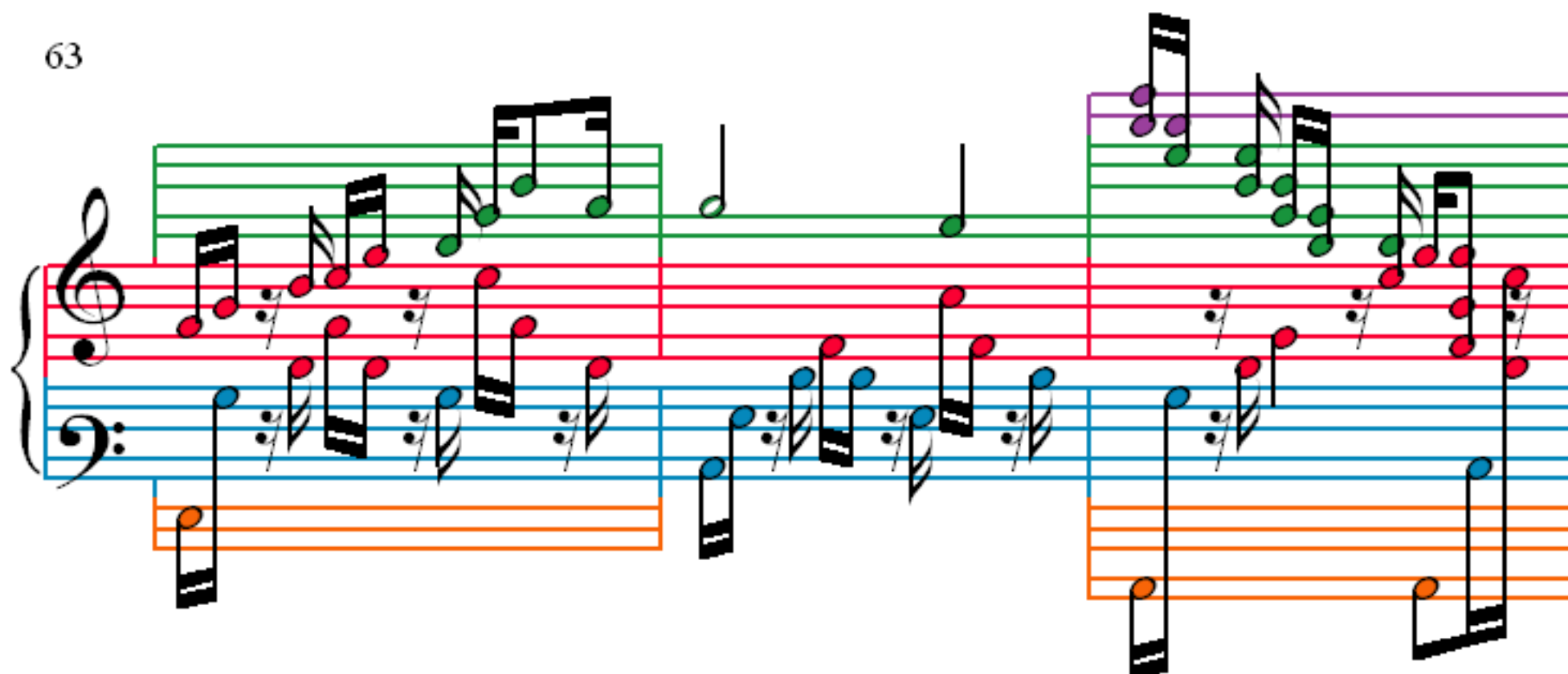
57

Measures 57-59 of the musical score. The system consists of three staves: a top staff with a treble clef, a middle staff with a treble clef, and a bottom staff with a bass clef. The top staff features a series of chords in purple and green. The middle staff has a treble clef and contains a sequence of eighth notes in red. The bottom staff has a bass clef and contains a sequence of eighth notes in blue.

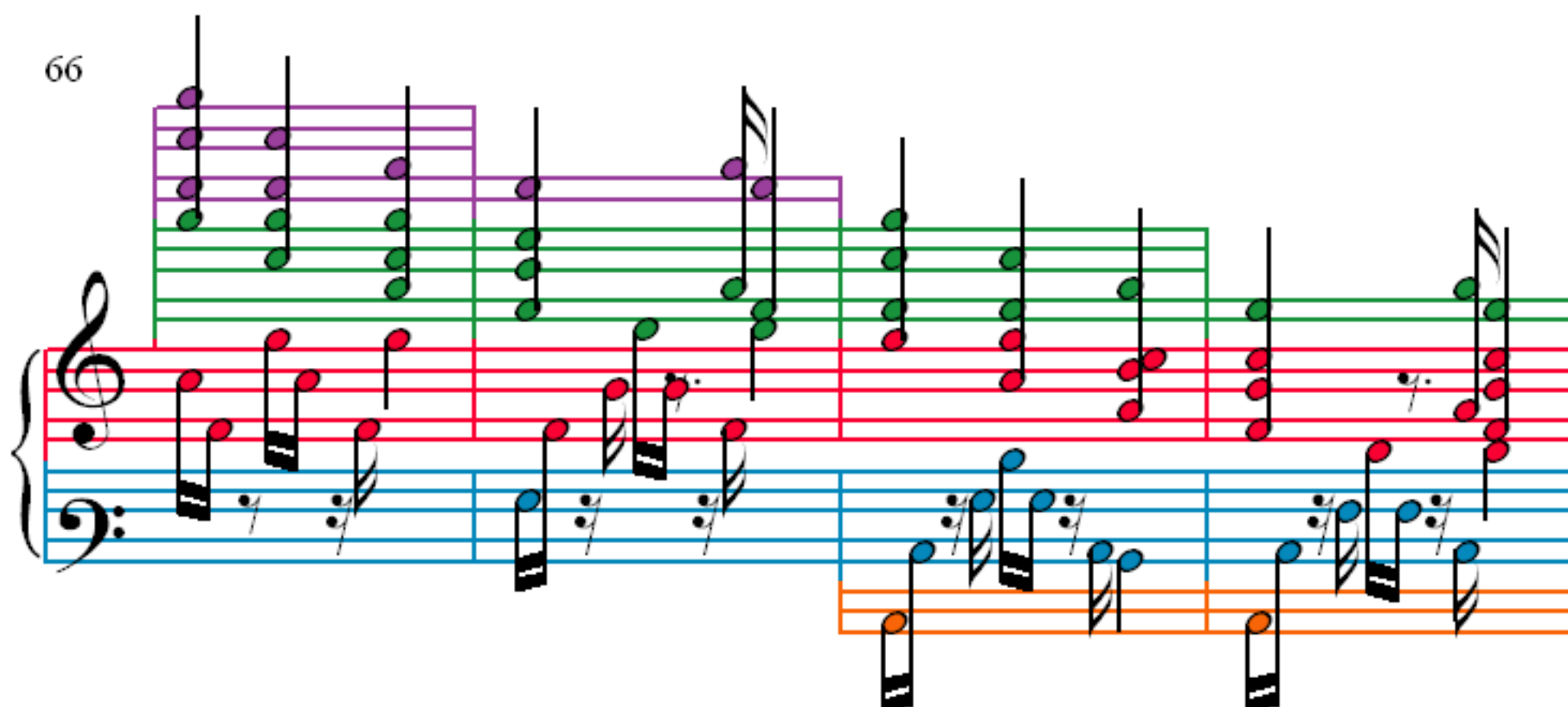
60

Measures 60-62 of the musical score. The system consists of three staves: a top staff with a treble clef, a middle staff with a treble clef, and a bottom staff with a bass clef. The top staff features a series of chords in purple and green. The middle staff has a treble clef and contains a sequence of eighth notes in red. The bottom staff has a bass clef and contains a sequence of eighth notes in blue.

63



66



70

