

Wedding-day at Trolldhaugen

E. Grieg (1843–1907)

1

Measures 1-3 of the piece. The music is in 4/4 time and E-flat major. The right hand (treble clef) features a melody with a triplet of eighth notes in measure 3. The left hand (bass clef) provides a harmonic accompaniment with chords and single notes. The bottom staff shows a simplified version of the accompaniment with colored dots (orange and pink) indicating fingerings.

4

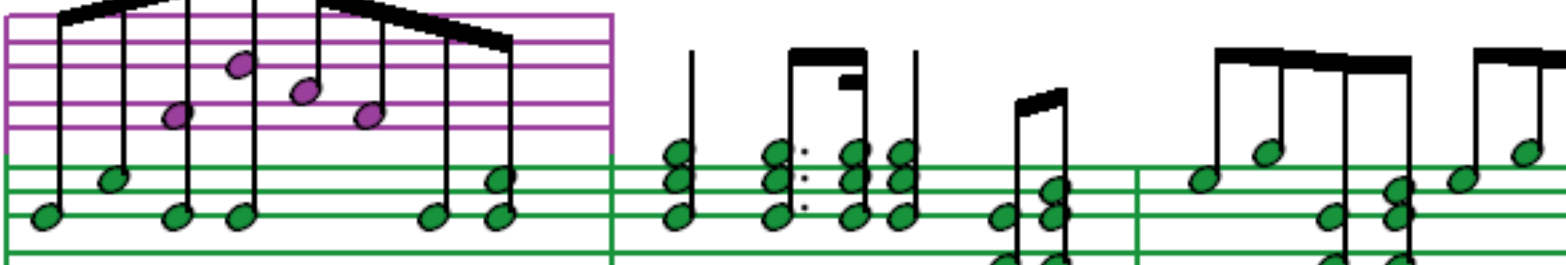
Measures 4-6 of the piece. The right hand continues the melody with a triplet of eighth notes in measure 6. The left hand accompaniment includes chords and single notes. The bottom staff shows a simplified version of the accompaniment with colored dots (orange and pink) indicating fingerings.

7

Measures 7-9 of the piece. The right hand features a more complex melody with slurs and ties. The left hand accompaniment includes chords and single notes. The bottom staff shows a simplified version of the accompaniment with colored dots (orange and pink) indicating fingerings.

[illegible]

13



The musical score for Example 13 consists of four staves. The top staff is purple and contains a melodic line with eighth and sixteenth notes. The second staff is green and contains a series of chords, some with dots indicating sustained notes. The third staff is red and contains a series of chords. The bottom staff is blue and contains a series of chords. The music is written in a style that suggests a piano accompaniment for a vocal or instrumental melody.

16

The musical score for Example 16 is presented on four staves. The top two staves are for the right hand, using a treble clef, and the bottom two staves are for the left hand, using a bass clef. The right hand part consists of a melody with eighth and sixteenth notes, frequently beamed together, and includes a triplet of eighth notes. The left hand part provides a harmonic accompaniment with chords and single notes. The score is divided into measures by vertical bar lines.

19

22

25

28

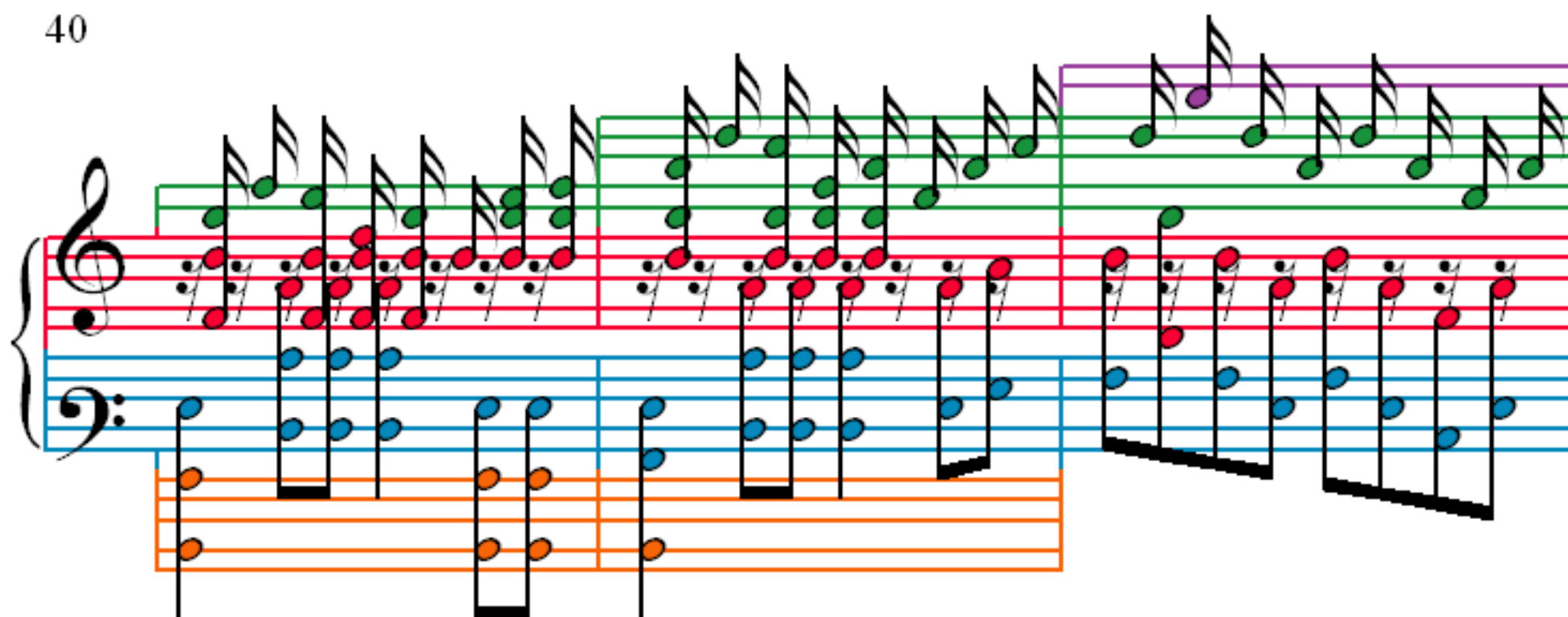
31

34

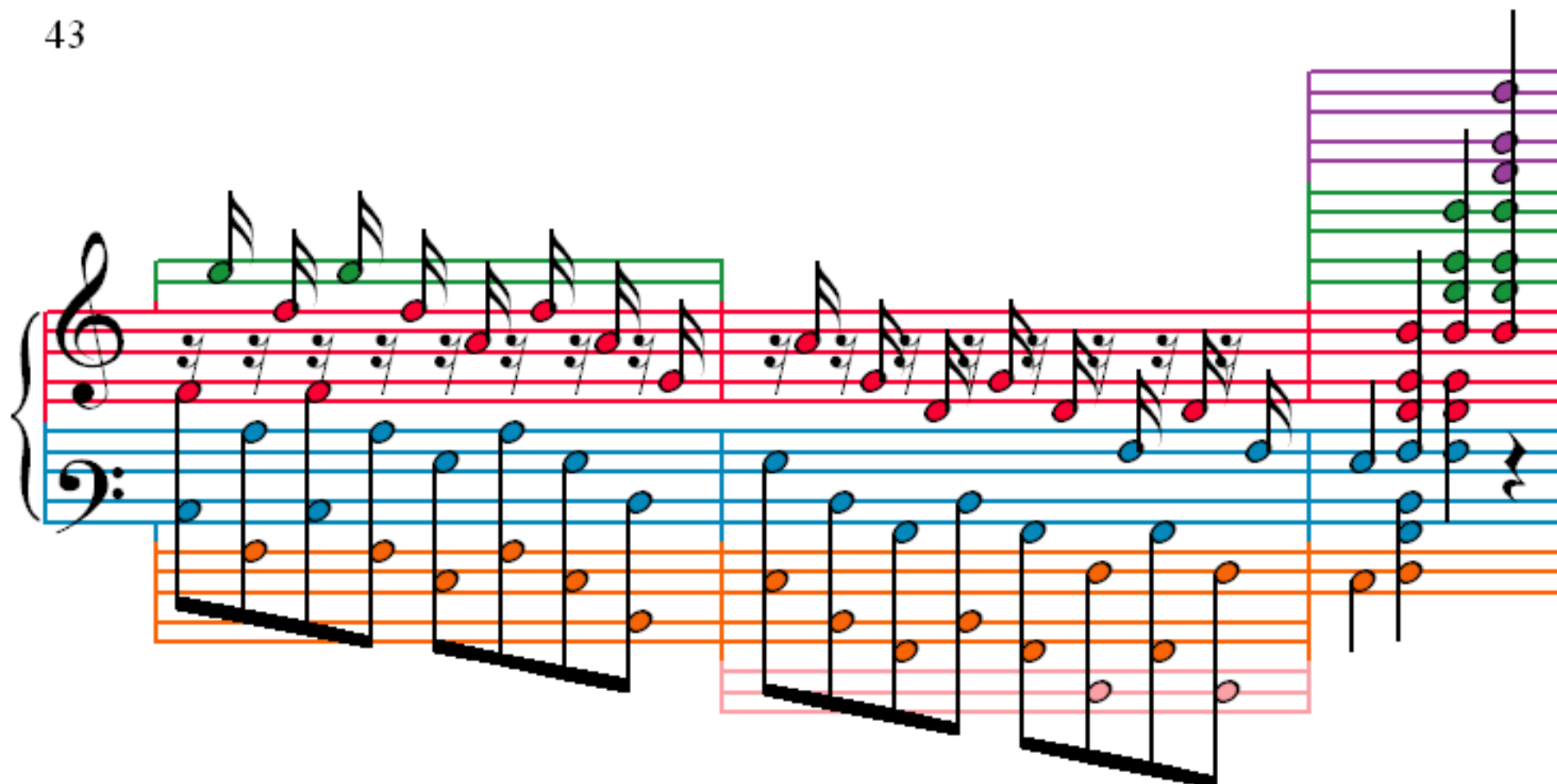
37

Wedding-day at Trolldhaugen

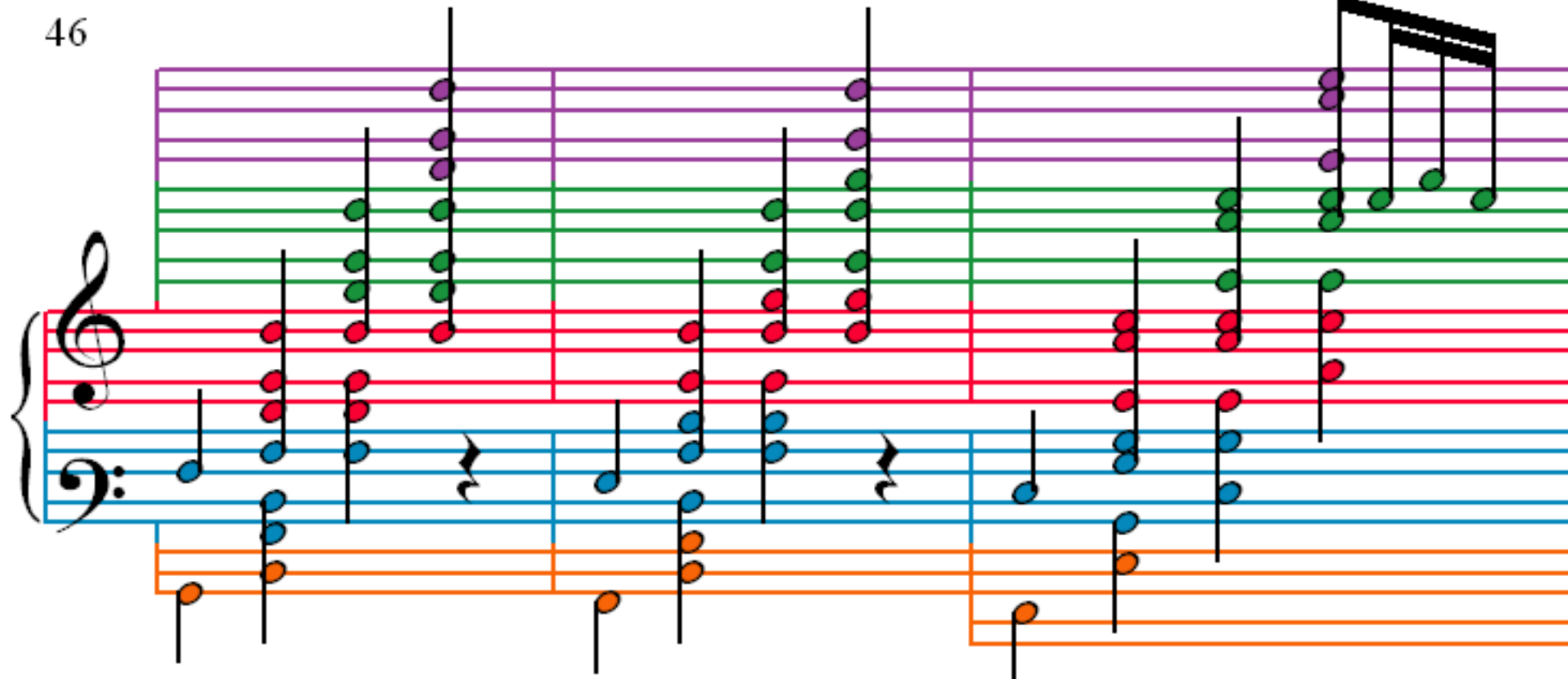
40



43



46



49

Measures 49-51 of the piece. The notation is for a piano accompaniment with three staves: a grand staff (treble and bass clefs) and a separate bass staff. The grand staff has a red line, and the bass staff has a blue line. The music features a mix of green, purple, and red notes. A blue bracket with the number '3' indicates a triplet in the bass staff at measure 51. A grey oval highlights a group of notes in the grand staff at measure 50.

52

Measures 52-54 of the piece. The notation continues with the same three-staff format. A blue bracket with the number '3' indicates a triplet in the grand staff at measure 52. A grey oval highlights a group of notes in the grand staff at measure 54. A blue bracket with the number '3' indicates a triplet in the bass staff at measure 54.

55

Measures 55-57 of the piece. The notation continues with the same three-staff format. A blue bracket with the number '3' indicates a triplet in the bass staff at measure 55. A 2/4 time signature is present at measure 56. A grey oval highlights a group of notes in the grand staff at measure 57.

58

62

66

70

74

79

84

89

94

98

102

106

110

115

120

125

130

Measures 130-133 of the musical score. The system features a grand staff with treble and bass clefs, and a lower staff with orange and pink lines. The treble staff contains red and green notes, with a green staff above it. The bass staff contains blue and red notes. The lower staff contains orange and pink notes. The notation includes various musical symbols such as notes, rests, and beams.

134

Measures 134-137 of the musical score. The system features a grand staff with treble and bass clefs, and a lower staff with orange and pink lines. The treble staff contains red and green notes, with a green staff above it. The bass staff contains blue and red notes. The lower staff contains orange and pink notes. The notation includes various musical symbols such as notes, rests, and beams.

138

Measures 138-141 of the musical score. The system features a grand staff with treble and bass clefs, and a lower staff with orange and pink lines. The treble staff contains red and green notes, with a green staff above it. The bass staff contains blue and red notes. The lower staff contains orange and pink notes. The notation includes various musical symbols such as notes, rests, and beams.

142

Measures 142-145 of the musical score. The system features a grand staff with treble and bass clefs, and a lower staff with orange and pink lines. The treble staff contains red and green notes, with a green staff above it. The bass staff contains blue and red notes. The lower staff contains orange and pink notes. The notation includes various musical symbols such as notes, rests, and beams.

145

148

151

154

155

156

157

158

157

Measures 157-159 of a piano piece. The score is written for three systems of staves. Each system consists of a grand staff (treble and bass clef) and a separate staff below. The grand staves have red lines, and the lower staves have blue lines. The notes are color-coded: purple for the right hand, green for the left hand, and blue for the lower staff. Measure 157 shows a complex right-hand passage with many beamed notes. Measure 158 continues this passage. Measure 159 shows a right-hand rest and a left-hand triplet of eighth notes. A blue bracket with the number '3' is above the triplet in measure 159.

160

Measures 160-162 of a piano piece. The score is written for three systems of staves. Each system consists of a grand staff (treble and bass clef) and a separate staff below. The grand staves have red lines, and the lower staves have blue lines. The notes are color-coded: purple for the right hand, green for the left hand, and blue for the lower staff. Measure 160 shows a right-hand rest and a left-hand triplet of eighth notes. A blue bracket with the number '3' is above the triplet in measure 160. Measure 161 continues the left-hand triplet. Measure 162 shows a right-hand triplet of eighth notes and a left-hand rest.

163

Measures 163-165 of a piano piece. The score is written for three systems of staves. Each system consists of a grand staff (treble and bass clef) and a separate staff below. The grand staves have red lines, and the lower staves have blue lines. The notes are color-coded: purple for the right hand, green for the left hand, and blue for the lower staff. Measure 163 shows a right-hand triplet of eighth notes and a left-hand triplet of eighth notes. A blue bracket with the number '3' is above the triplet in measure 163. Measure 164 continues the right-hand triplet and the left-hand triplet. Measure 165 shows a right-hand triplet of eighth notes and a left-hand triplet of eighth notes. A blue bracket with the number '3' is above the triplet in measure 165.

166

169

171

173

175

177

179

182

184

Measures 184-186 of the piece. The notation is presented in three systems. Each system consists of a grand staff (treble and bass clefs) and a separate orange staff below. The treble staff features chords of purple, green, and red notes. The bass staff contains blue notes, some with slurs. The orange staff has orange notes, some with slurs. The measures are separated by vertical bar lines.

187

Measures 187-189 of the piece. The notation is presented in three systems. Each system consists of a grand staff (treble and bass clefs) and a separate orange staff below. The treble staff features chords of purple, green, and red notes. The bass staff contains blue notes, some with slurs. The orange staff has orange notes, some with slurs. The measures are separated by vertical bar lines.

190

Measures 190-192 of the piece. The notation is presented in three systems. Each system consists of a grand staff (treble and bass clefs) and a separate orange staff below. The treble staff features chords of purple, green, and red notes. The bass staff contains blue notes, some with slurs. The orange staff has orange notes, some with slurs. The measures are separated by vertical bar lines.

193

Measures 193-195 of the musical score. The system consists of three staves. The top staff (purple) features a melody with eighth and sixteenth notes, including a triplet of eighth notes in measure 195. The middle staff (red) contains a treble clef and a series of chords and single notes. The bottom staff (blue) contains a bass clef and a series of chords and single notes. A third staff (orange) is positioned below the blue staff, containing a series of eighth notes.

196

Measures 196-198 of the musical score. The system consists of three staves. The top staff (purple) features a melody with eighth and sixteenth notes, including a triplet of eighth notes in measure 197. The middle staff (red) contains a treble clef and a series of chords and single notes. The bottom staff (blue) contains a bass clef and a series of chords and single notes. A third staff (orange) is positioned below the blue staff, containing a series of eighth notes.

199

Measures 199-201 of the musical score. The system consists of three staves. The top staff (purple) features a melody with eighth and sixteenth notes, including a triplet of eighth notes in measure 199. The middle staff (red) contains a treble clef and a series of chords and single notes. The bottom staff (blue) contains a bass clef and a series of chords and single notes. A third staff (orange) is positioned below the blue staff, containing a series of eighth notes.

202

Measures 202-204. The system includes a grand staff with treble and bass clefs, and a lower system with two staves. The treble staff has red notes, the bass staff has blue notes, and the lower system has orange notes. The notation includes various note values, rests, and accidentals.

205

Measures 205-207. The system includes a grand staff with treble and bass clefs, and a lower system with two staves. The treble staff has red notes, the bass staff has blue notes, and the lower system has orange notes. The notation includes various note values, rests, and accidentals.

208

Measures 208-211. The system includes a grand staff with treble and bass clefs, and a lower system with two staves. The treble staff has red notes, the bass staff has blue notes, and the lower system has orange notes. The notation includes various note values, rests, and accidentals.