

# Sonate I, II - Menuetto

F. J. Haydn (1732–1809)

1

Measures 1-3 of the Minuet. The piece is in 3/4 time and G major. The right hand features a melody of eighth and sixteenth notes, while the left hand provides a simple accompaniment of quarter notes. A repeat sign is present at the end of measure 3.

4

Measures 4-6 of the Minuet. The right hand continues the melodic line, and the left hand adds some eighth-note accompaniment. A repeat sign is present at the end of measure 6.

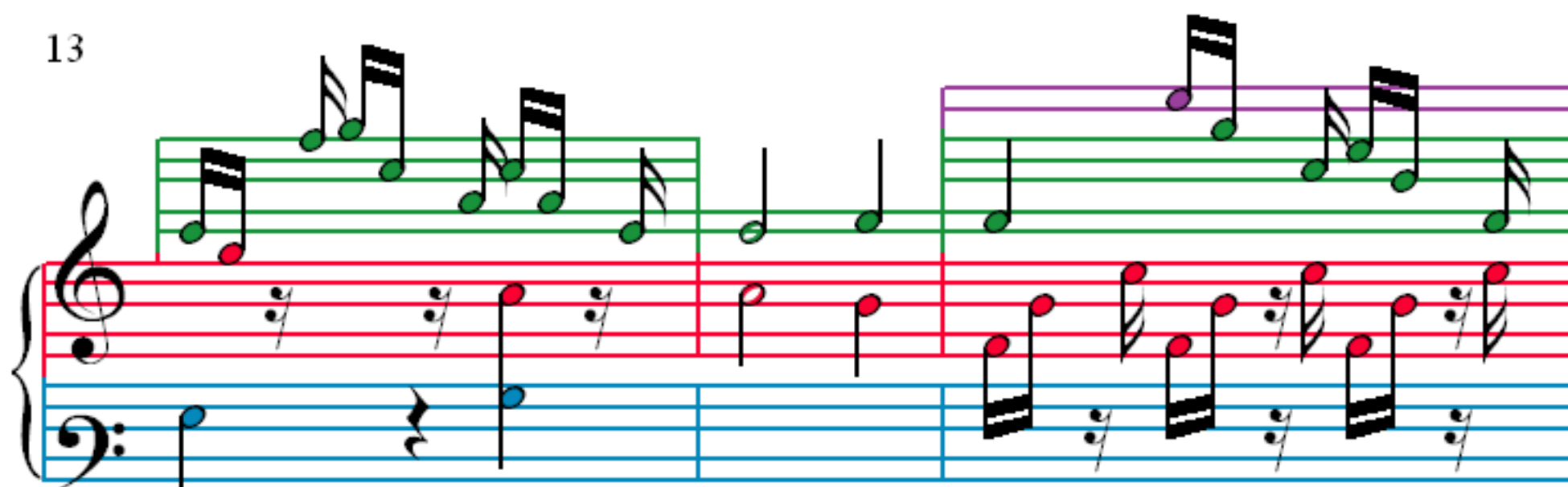
7

Measures 7-9 of the Minuet. The right hand has a more active melody with many sixteenth notes. The left hand has rests in measures 7 and 8, then joins in measure 9.

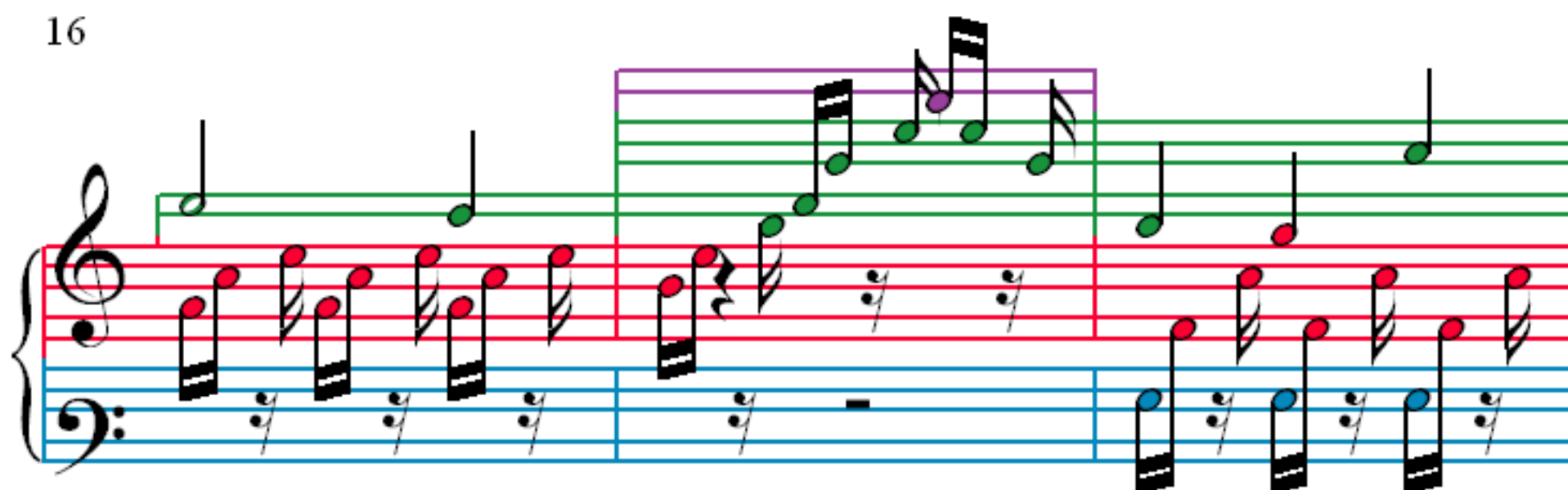
10

Measures 10-12 of the Minuet. The right hand continues with a melodic line, and the left hand provides a steady accompaniment of quarter notes.

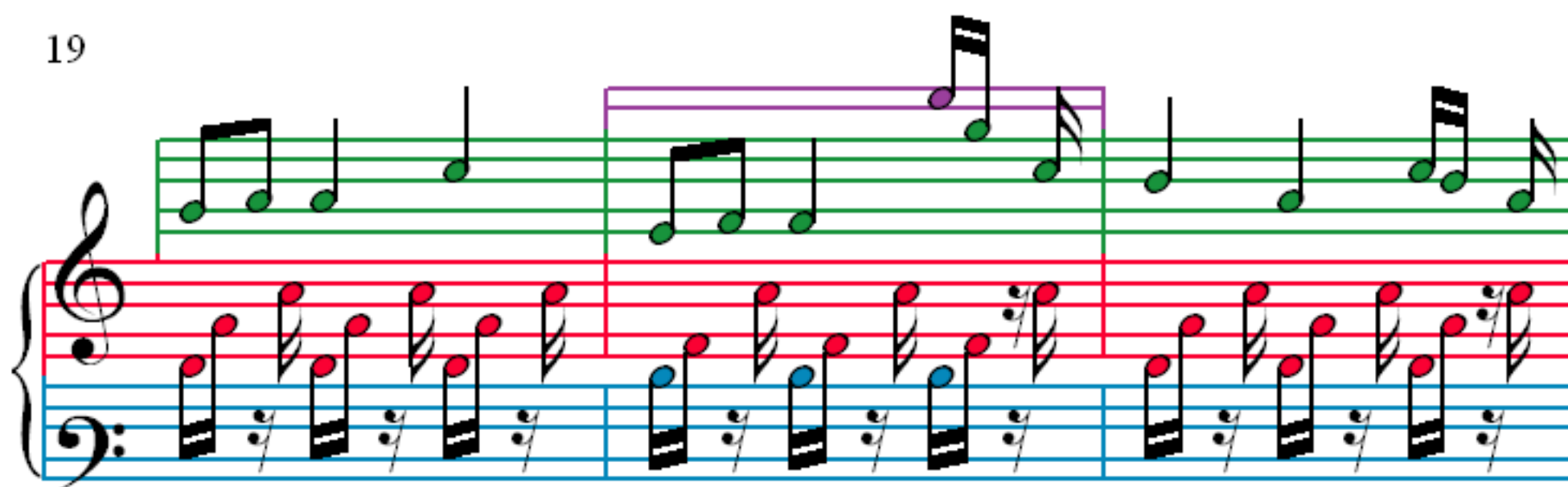
13



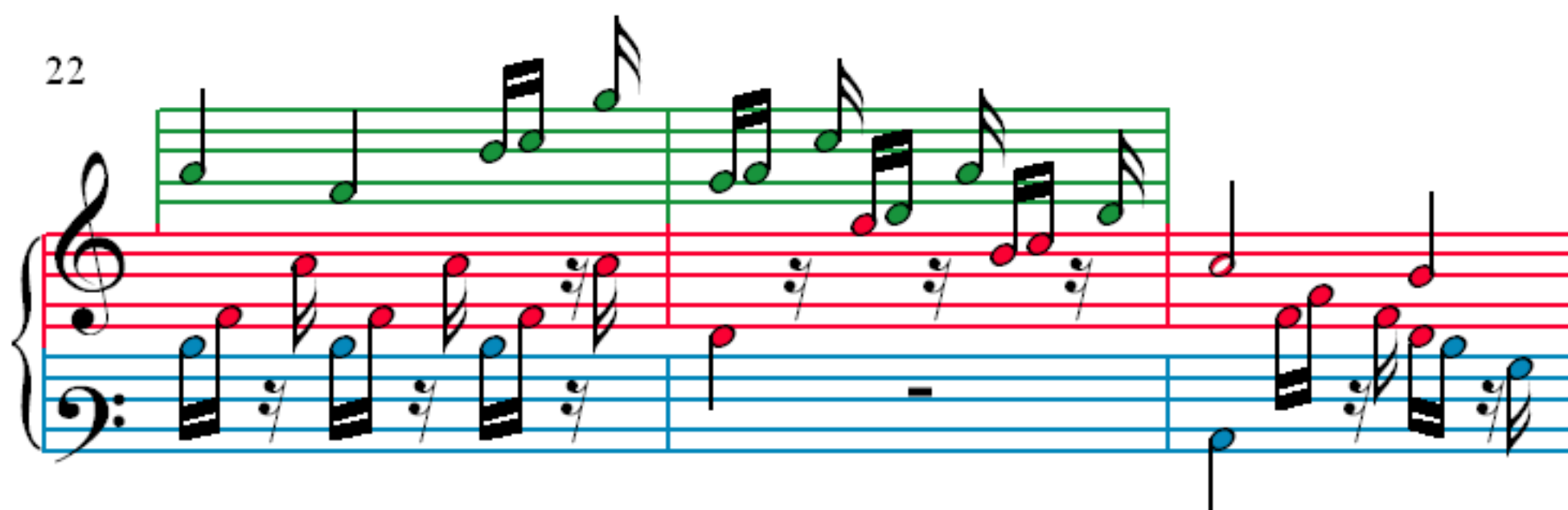
16



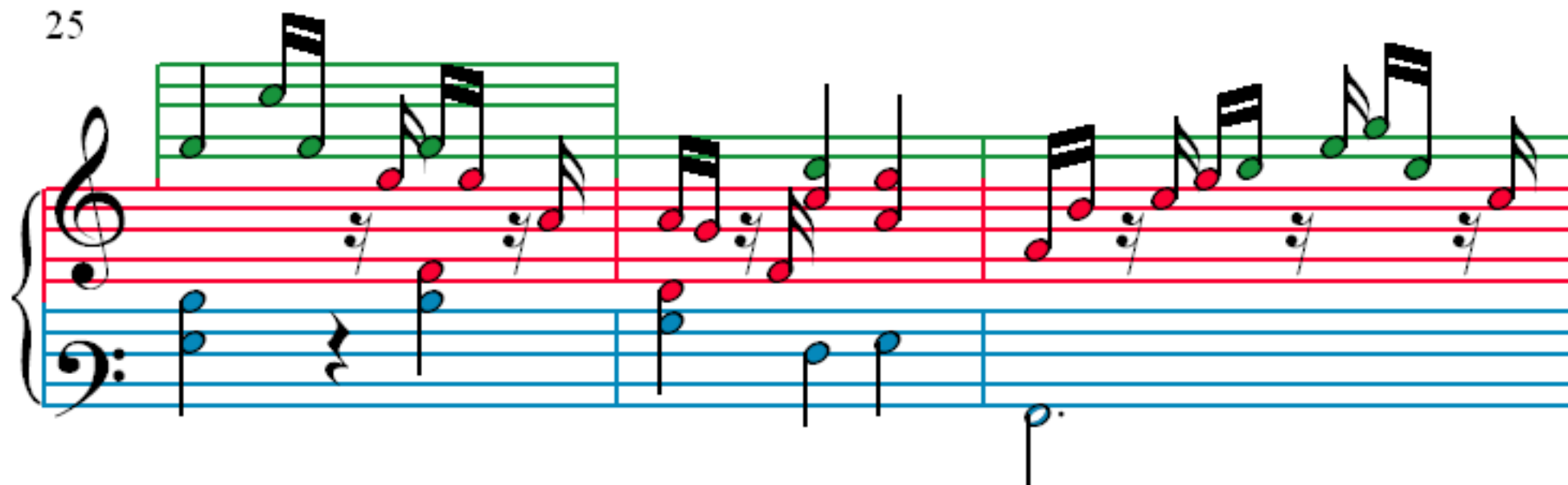
19



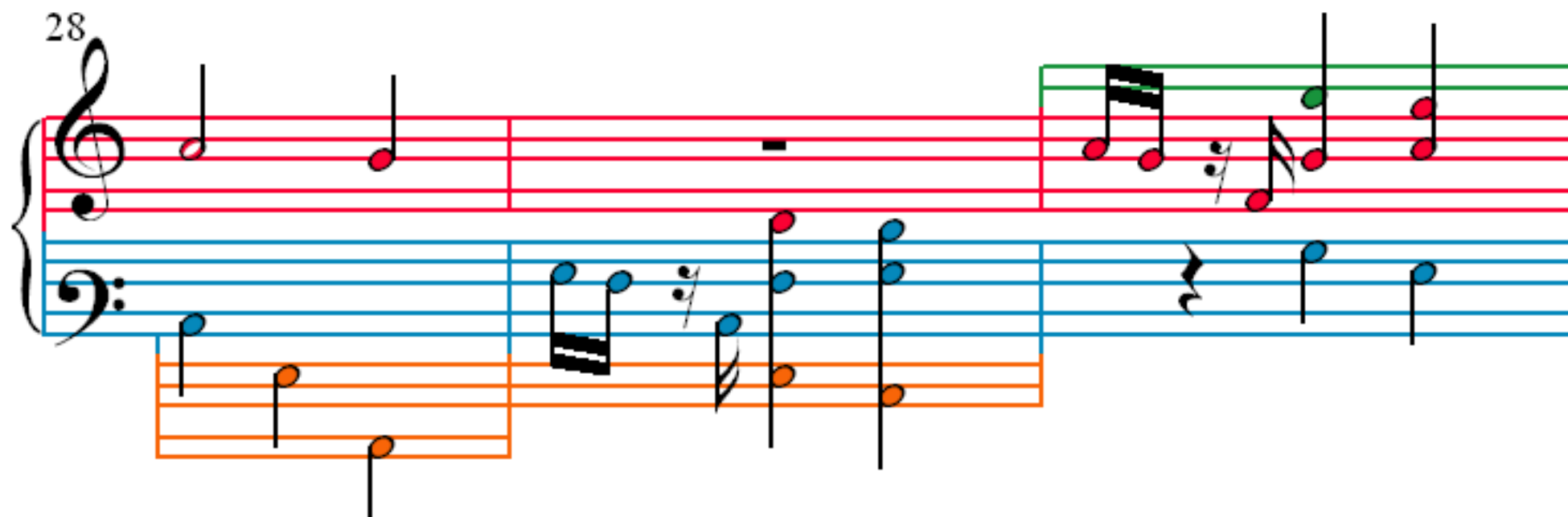
22



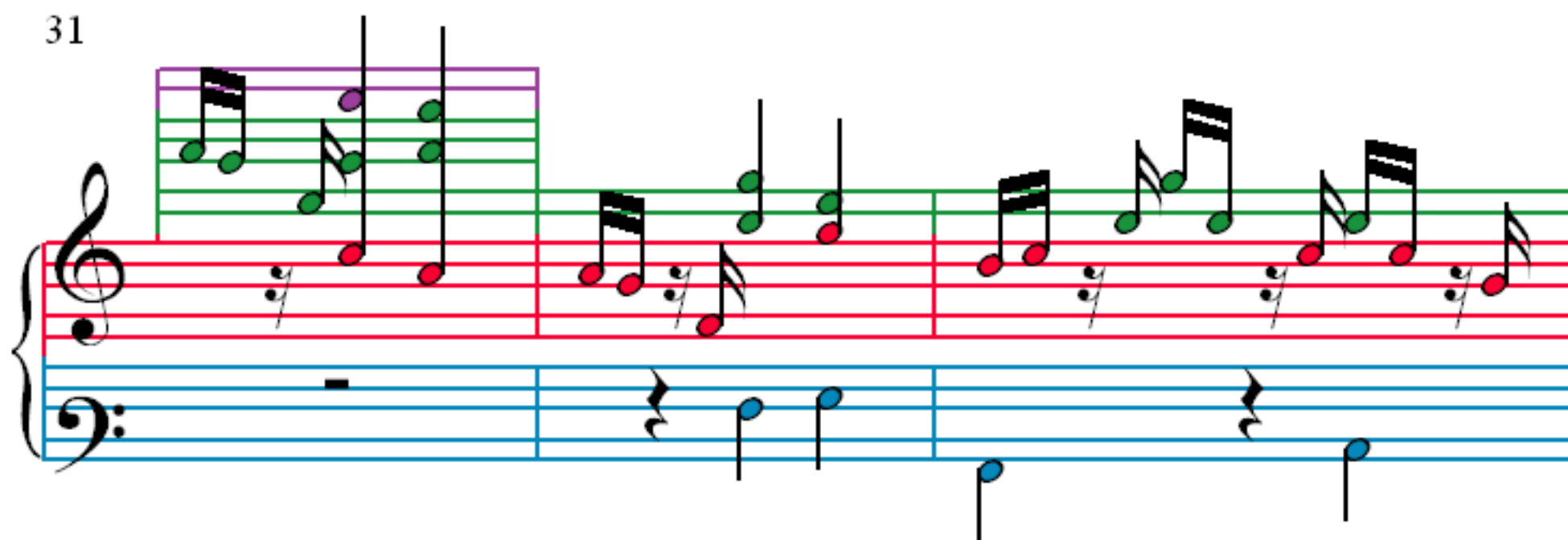
25



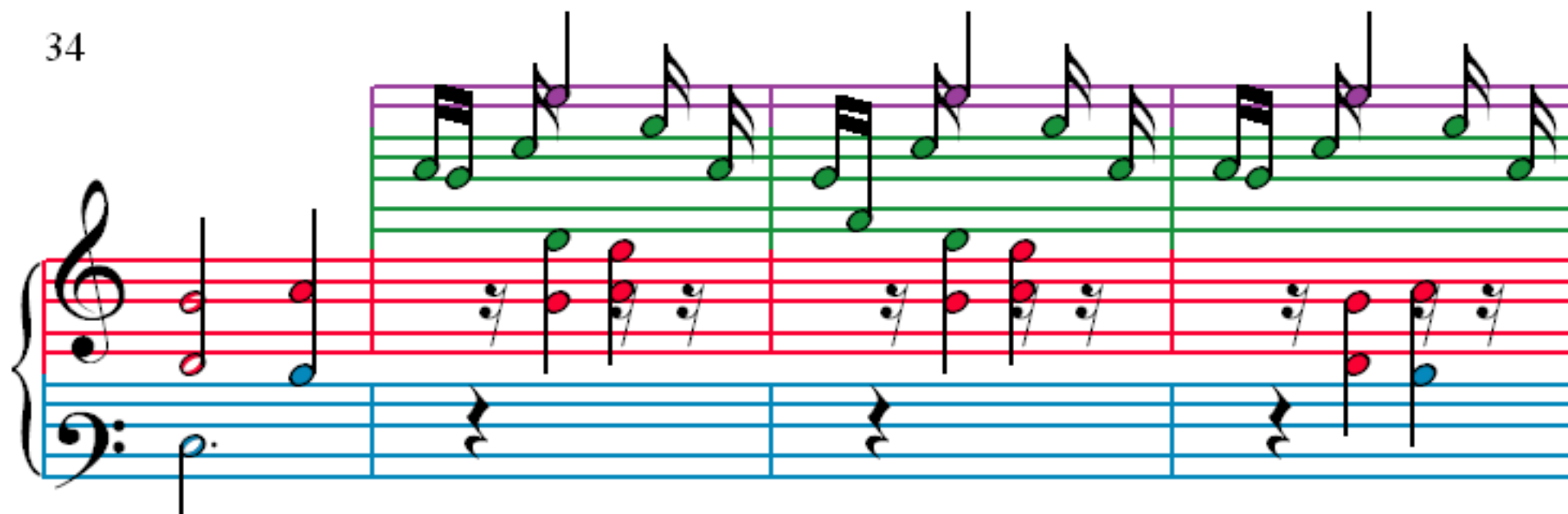
28



31



34



38

41

45

49

53

Measures 53-55. The treble clef staff has a green line and a red line. The bass clef staff has a blue line and an orange line. The music consists of eighth and sixteenth notes in the treble and bass staves, with some rests.

56

Measures 56-58. The treble clef staff has a green line and a red line. The bass clef staff has a blue line and an orange line. The music consists of eighth and sixteenth notes in the treble and bass staves, with some rests.

59

Measures 59-62. The treble clef staff has a green line and a red line. The bass clef staff has a blue line and an orange line. The music consists of eighth and sixteenth notes in the treble and bass staves, with some rests.

63

Measures 63-66. The treble clef staff has a green line and a red line. The bass clef staff has a blue line and an orange line. The music consists of eighth and sixteenth notes in the treble and bass staves, with some rests.