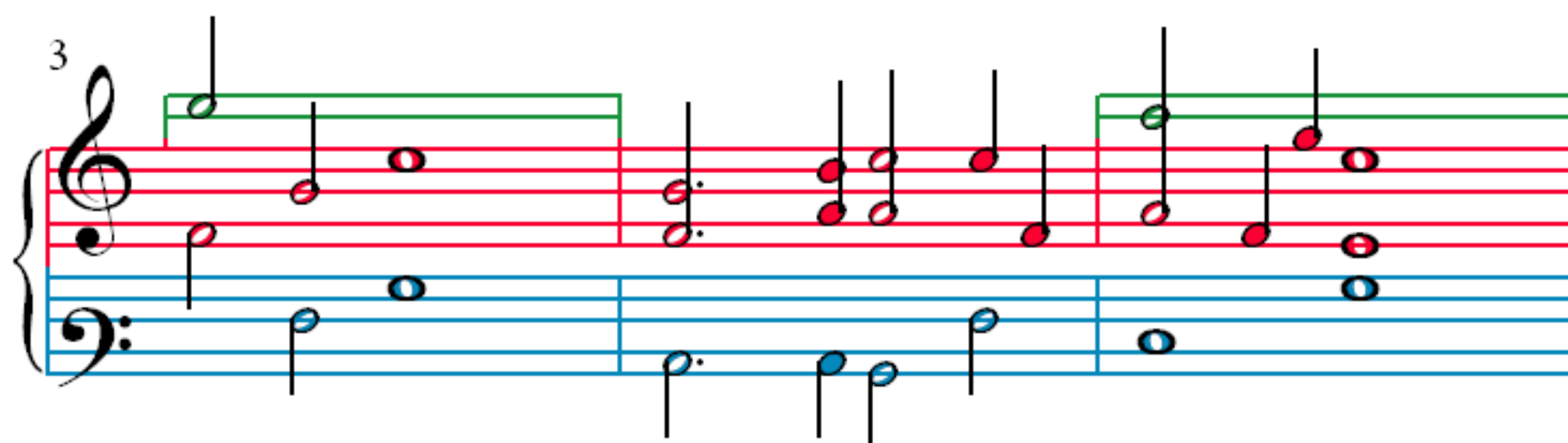
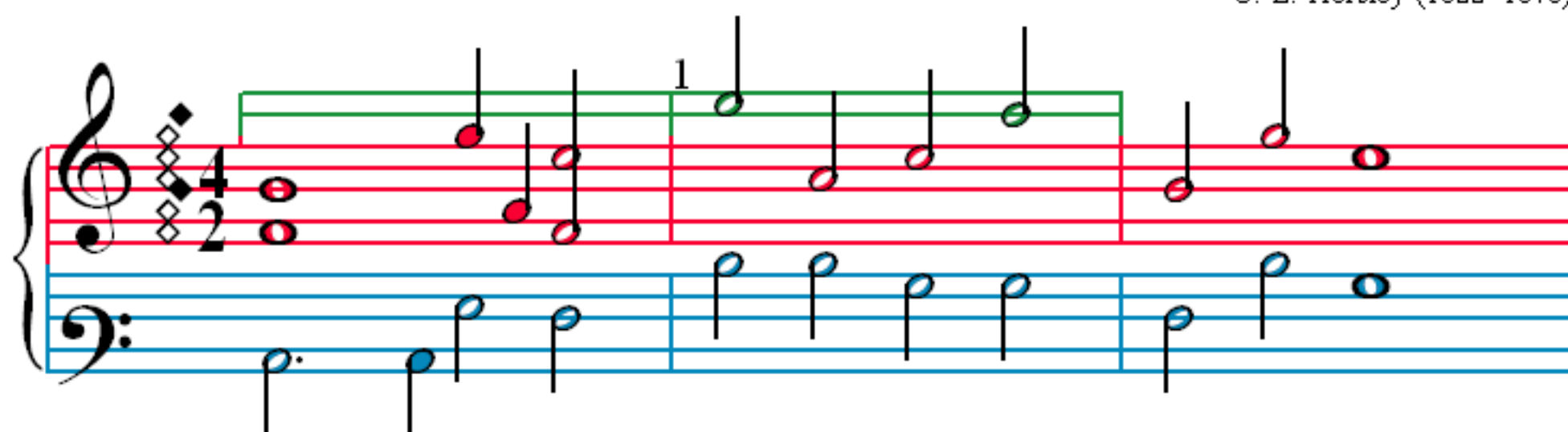


All My Heart This Night Rejoices

C. E. Horsley (1822–1876)



13

Measures 13-16: Treble clef (G4), Bass clef (G3), Red line (G4), Orange line (G3).

17

Measures 17-20: Treble clef (G4), Bass clef (G3), Red line (G4), Orange line (G3).

21

Measures 21-24: Treble clef (G4), Bass clef (G3), Red line (G4), Orange line (G3).

25

Measures 25-28: Treble clef (G4), Bass clef (G3), Red line (G4), Orange line (G3).

