

Sonatine I - Rondo

F. Kuhlau (1786–1832)

1

Measures 1-3 of the Sonatine I - Rondo. The piece is in 2/4 time, indicated by the treble clef and the 2/4 time signature. The key signature has one sharp (F#). The notation is for a piano (p) and features a melody in the treble clef and a bass line in the bass clef. The melody consists of eighth and sixteenth notes, often beamed together. The bass line consists of quarter and eighth notes. The first measure has a treble clef and a 2/4 time signature. The second and third measures have a treble clef and a 2/4 time signature. The first measure has a treble clef and a 2/4 time signature. The second and third measures have a treble clef and a 2/4 time signature.

4

Measures 4-6 of the Sonatine I - Rondo. The notation continues from the previous system. The melody in the treble clef continues with eighth and sixteenth notes. The bass line in the bass clef continues with quarter and eighth notes. The first measure has a treble clef and a 2/4 time signature. The second and third measures have a treble clef and a 2/4 time signature. The first measure has a treble clef and a 2/4 time signature. The second and third measures have a treble clef and a 2/4 time signature.

7

Measures 7-9 of the Sonatine I - Rondo. The notation continues from the previous system. The melody in the treble clef continues with eighth and sixteenth notes. The bass line in the bass clef continues with quarter and eighth notes. The first measure has a treble clef and a 2/4 time signature. The second and third measures have a treble clef and a 2/4 time signature. The first measure has a treble clef and a 2/4 time signature. The second and third measures have a treble clef and a 2/4 time signature.

10

Measures 10-12 of the Sonatine I - Rondo. The notation continues from the previous system. The melody in the treble clef continues with eighth and sixteenth notes. The bass line in the bass clef continues with quarter and eighth notes. The first measure has a treble clef and a 2/4 time signature. The second and third measures have a treble clef and a 2/4 time signature. The first measure has a treble clef and a 2/4 time signature. The second and third measures have a treble clef and a 2/4 time signature.

13

Measures 13-15. Treble clef: Measure 13 has two eighth-note chords (F4-A4, G4-B4) and a half-note chord (F4-A4). Measure 14 has two eighth-note chords (G4-B4, A4-C5) and a half-note chord (G4-B4). Measure 15 has a half-note chord (F4-A4) and a quarter-note chord (G4-B4). Bass clef: Measure 13 has two eighth-note chords (F3-A3, G3-B3) and a half-note chord (F3-A3). Measure 14 has two eighth-note chords (G3-B3, A3-C4) and a half-note chord (G3-B3). Measure 15 has a half-note chord (F3-A3) and a quarter-note chord (G3-B3). A red line is under the first staff, and a blue line is under the second staff.

16

Measures 16-18. Treble clef: Measure 16 has two eighth-note chords (F4-A4, G4-B4) and a half-note chord (F4-A4). Measure 17 has two eighth-note chords (G4-B4, A4-C5) and a half-note chord (G4-B4). Measure 18 has a half-note chord (F4-A4) and a quarter-note chord (G4-B4). Bass clef: Measure 16 has two eighth-note chords (F3-A3, G3-B3) and a half-note chord (F3-A3). Measure 17 has two eighth-note chords (G3-B3, A3-C4) and a half-note chord (G3-B3). Measure 18 has a half-note chord (F3-A3) and a quarter-note chord (G3-B3). A red line is under the first staff, and a blue line is under the second staff.

19

Measures 19-22. Treble clef: Measure 19 has two eighth-note chords (F4-A4, G4-B4) and a half-note chord (F4-A4). Measure 20 has two eighth-note chords (G4-B4, A4-C5) and a half-note chord (G4-B4). Measure 21 has a half-note chord (F4-A4) and a quarter-note chord (G4-B4). Measure 22 has two eighth-note chords (F4-A4, G4-B4) and a half-note chord (F4-A4). Bass clef: Measure 19 has two eighth-note chords (F3-A3, G3-B3) and a half-note chord (F3-A3). Measure 20 has two eighth-note chords (G3-B3, A3-C4) and a half-note chord (G3-B3). Measure 21 has a half-note chord (F3-A3) and a quarter-note chord (G3-B3). Measure 22 has two eighth-note chords (F3-A3, G3-B3) and a half-note chord (F3-A3). A red line is under the first staff, and a blue line is under the second staff.

23

Measures 23-26. Treble clef: Measure 23 has two eighth-note chords (F4-A4, G4-B4) and a half-note chord (F4-A4). Measure 24 has two eighth-note chords (G4-B4, A4-C5) and a half-note chord (G4-B4). Measure 25 has a half-note chord (F4-A4) and a quarter-note chord (G4-B4). Measure 26 has two eighth-note chords (F4-A4, G4-B4) and a half-note chord (F4-A4). Bass clef: Measure 23 has two eighth-note chords (F3-A3, G3-B3) and a half-note chord (F3-A3). Measure 24 has two eighth-note chords (G3-B3, A3-C4) and a half-note chord (G3-B3). Measure 25 has a half-note chord (F3-A3) and a quarter-note chord (G3-B3). Measure 26 has two eighth-note chords (F3-A3, G3-B3) and a half-note chord (F3-A3). A red line is under the first staff, and a blue line is under the second staff.

27

30

33

37

40

Measures 40-42. Treble clef: Measure 40 has two eighth-note chords (F4-A4, G4-B4). Measure 41 has two eighth-note chords (F4-A4, G4-B4). Measure 42 has two eighth-note chords (F4-A4, G4-B4). Bass clef: Measure 40 has a quarter note (F3) and a quarter note (A3). Measure 41 has a quarter note (F3) and a quarter note (A3). Measure 42 has a half note (F3).

43

Measures 43-45. Treble clef: Measure 43 has two eighth-note chords (F4-A4, G4-B4). Measure 44 has two eighth-note chords (F4-A4, G4-B4). Measure 45 has two eighth-note chords (F4-A4, G4-B4). Bass clef: Measure 43 has two eighth-note chords (F3-A3, G3-B3). Measure 44 has two eighth-note chords (F3-A3, G3-B3). Measure 45 has two eighth-note chords (F3-A3, G3-B3).

46

Measures 46-48. Treble clef: Measure 46 has two eighth-note chords (F4-A4, G4-B4). Measure 47 has two eighth-note chords (F4-A4, G4-B4). Measure 48 has two eighth-note chords (F4-A4, G4-B4). Bass clef: Measure 46 has two eighth-note chords (F3-A3, G3-B3). Measure 47 has two eighth-note chords (F3-A3, G3-B3). Measure 48 has two eighth-note chords (F3-A3, G3-B3).

49

Measures 49-51. Treble clef: Measure 49 has two eighth-note chords (F4-A4, G4-B4). Measure 50 has two eighth-note chords (F4-A4, G4-B4). Measure 51 has two eighth-note chords (F4-A4, G4-B4). Bass clef: Measure 49 has two eighth-note chords (F3-A3, G3-B3). Measure 50 has two eighth-note chords (F3-A3, G3-B3). Measure 51 has two eighth-note chords (F3-A3, G3-B3).

52

55

58

61

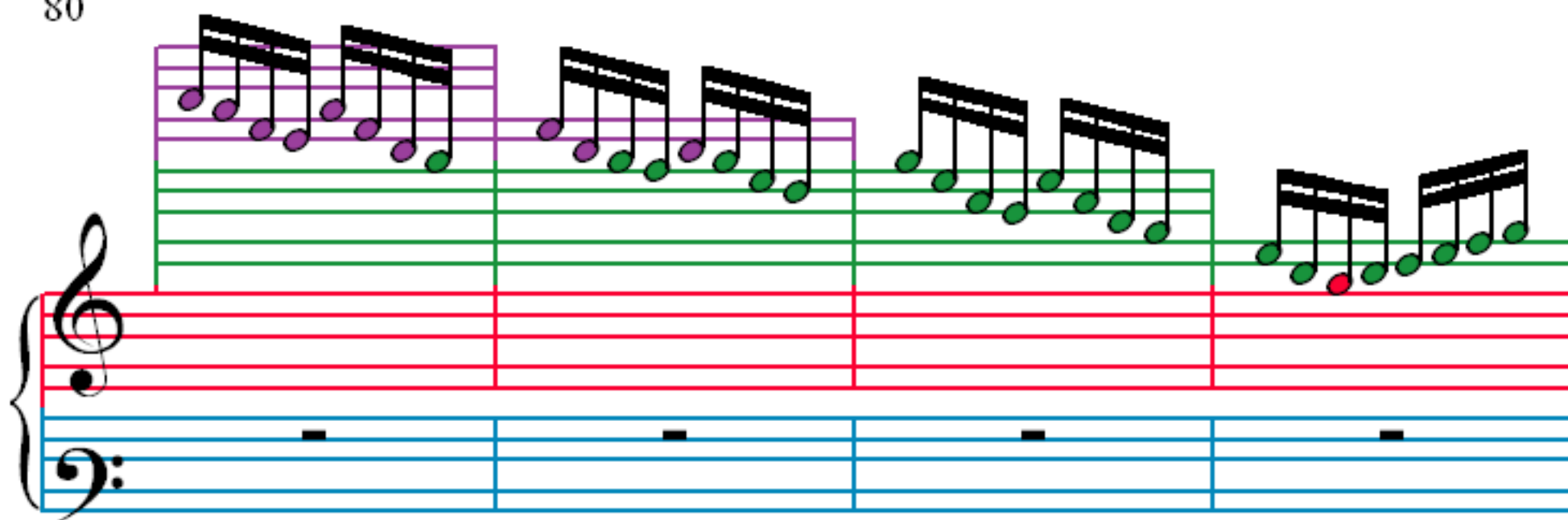
65

69

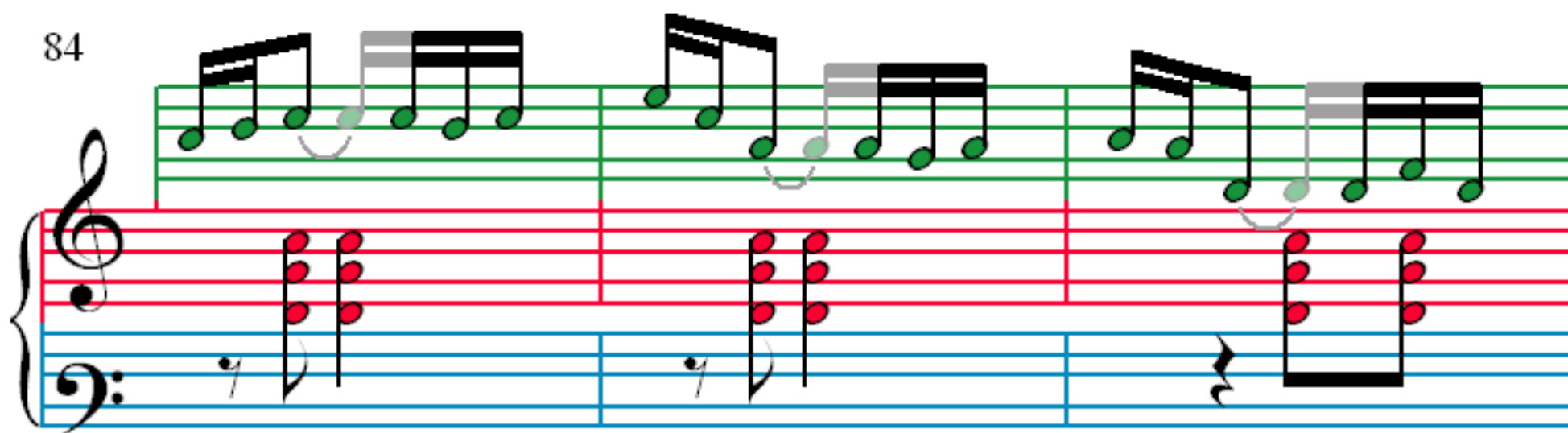
72

76

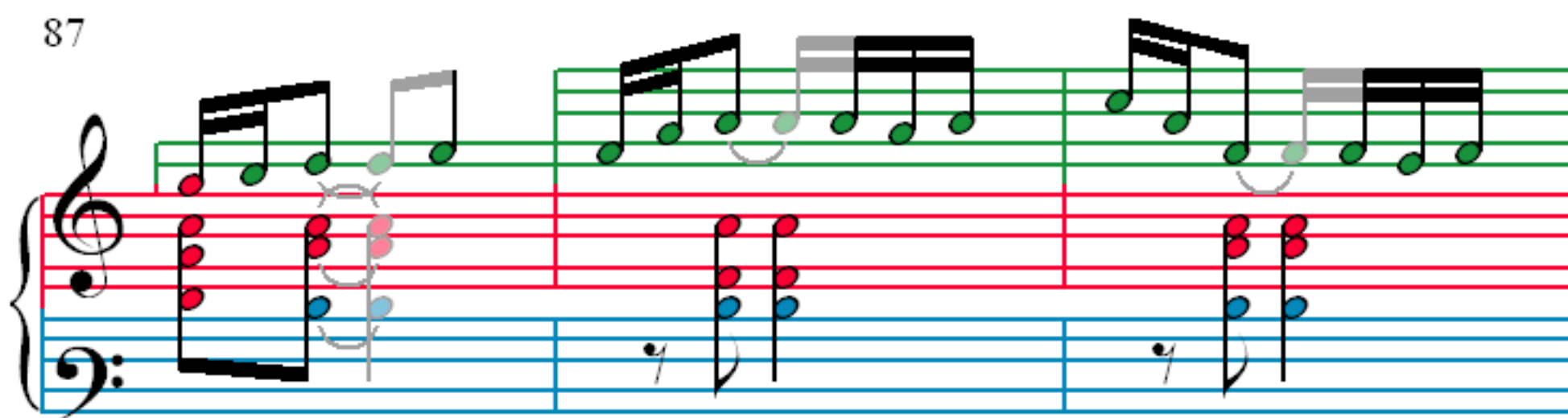
80



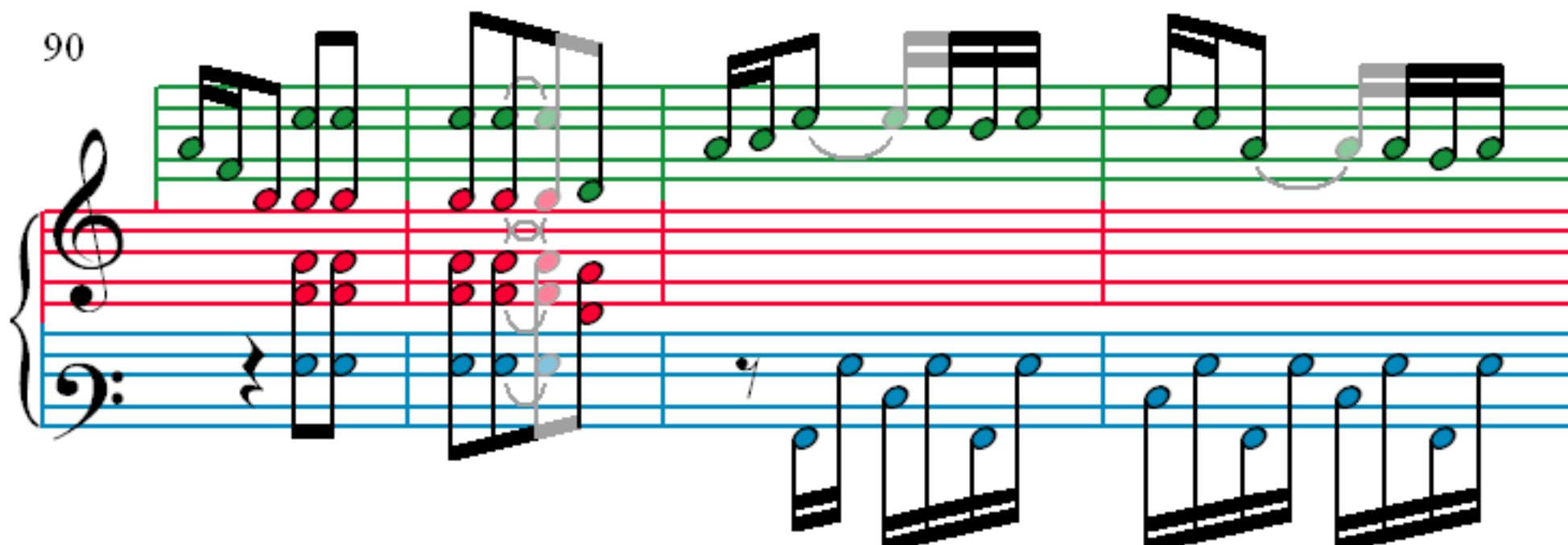
84



87



90



94

Measures 94-96. Treble clef: eighth-note chords, half-note. Bass clef: eighth-note chords, half-note. Measure 95 has an orange line under the bass staff.

97

Measures 97-99. Treble clef: eighth-note chords, half-note. Bass clef: eighth-note chords, half-note. Measure 99 has a fermata over the treble staff.

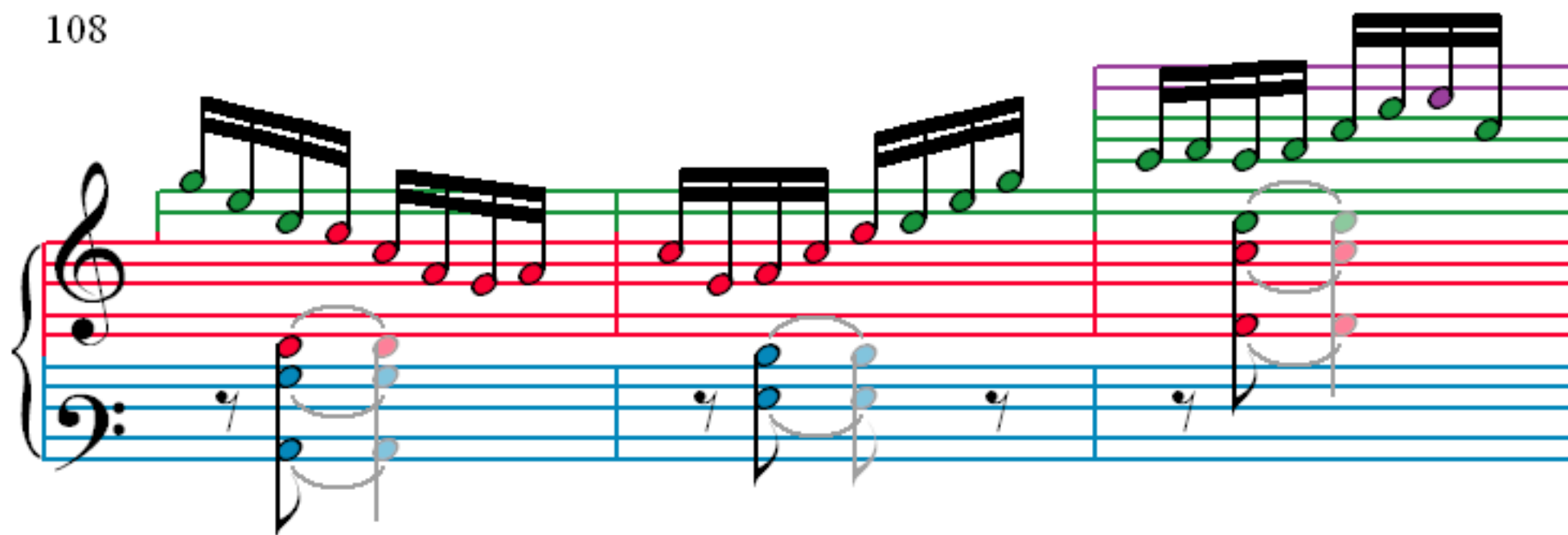
100

Measures 100-103. Treble clef: eighth-note chords, half-note. Bass clef: eighth-note chords, half-note. Measure 103 has a fermata over the treble staff.

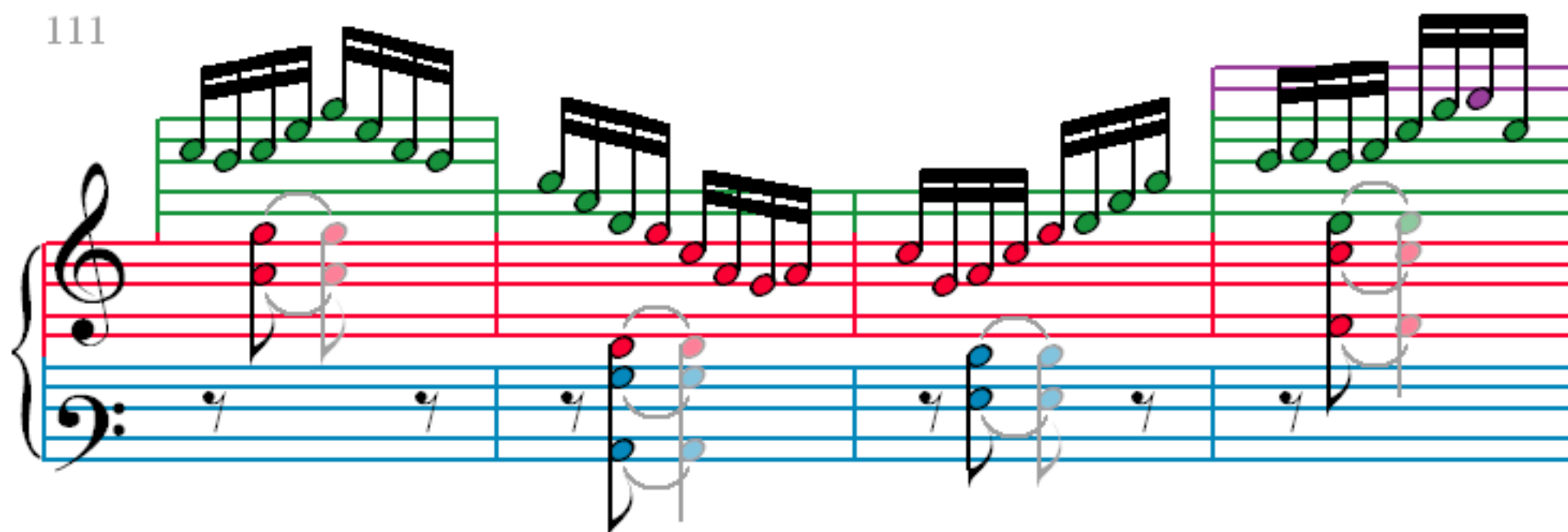
104

Measures 104-107. Treble clef: eighth-note chords, half-note. Bass clef: eighth-note chords, half-note. Measure 107 has a fermata over the treble staff.

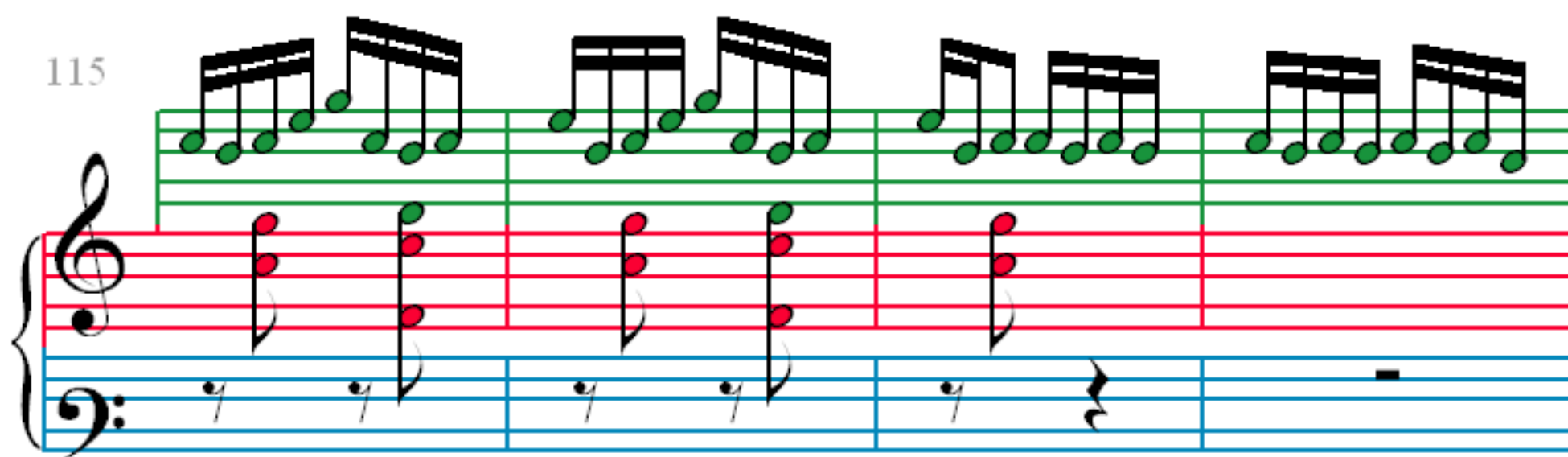
108



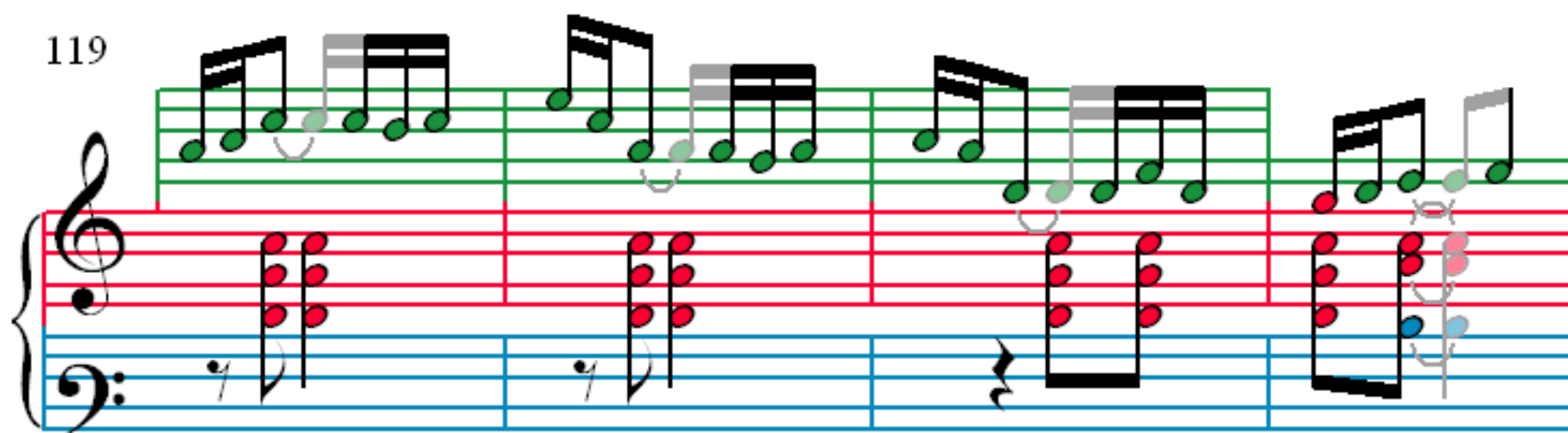
111



115



119



123

Measures 123-125. Treble clef: eighth-note chords. Bass clef: quarter notes.

126

Measures 126-131. Treble clef: eighth-note chords. Bass clef: eighth-note chords.

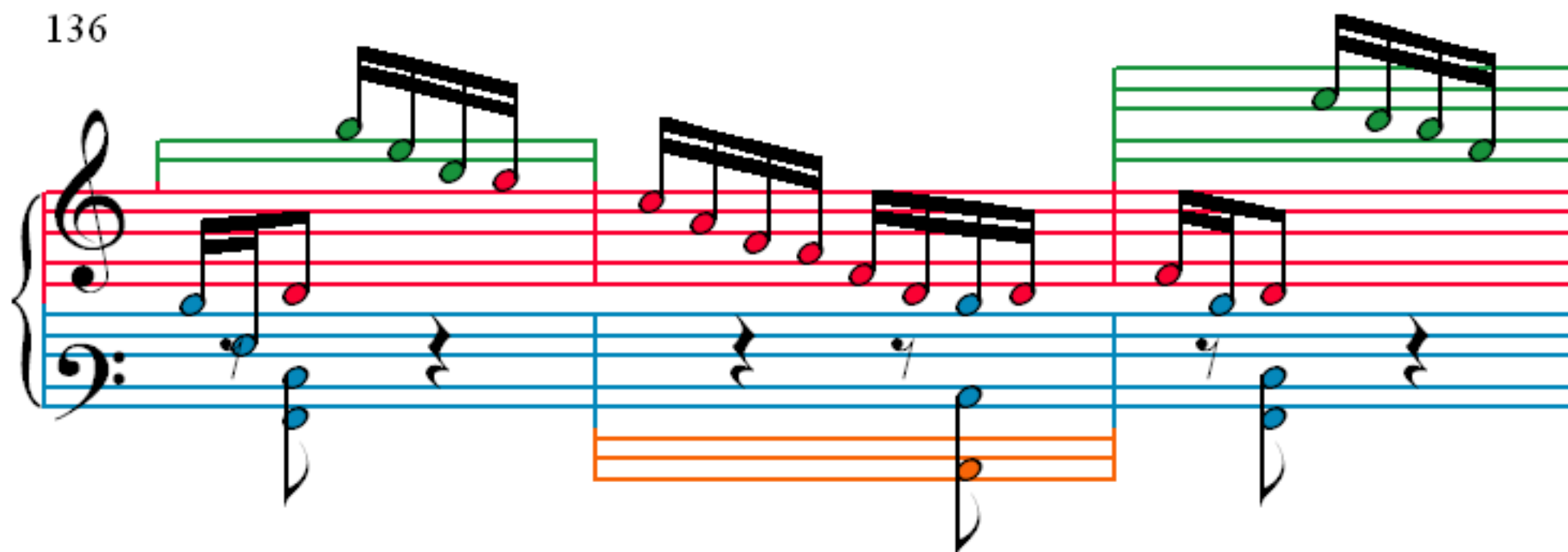
129

Measures 129-131. Treble clef: eighth-note chords. Bass clef: eighth-note chords.

132

Measures 132-135. Treble clef: eighth-note chords. Bass clef: eighth-note chords.

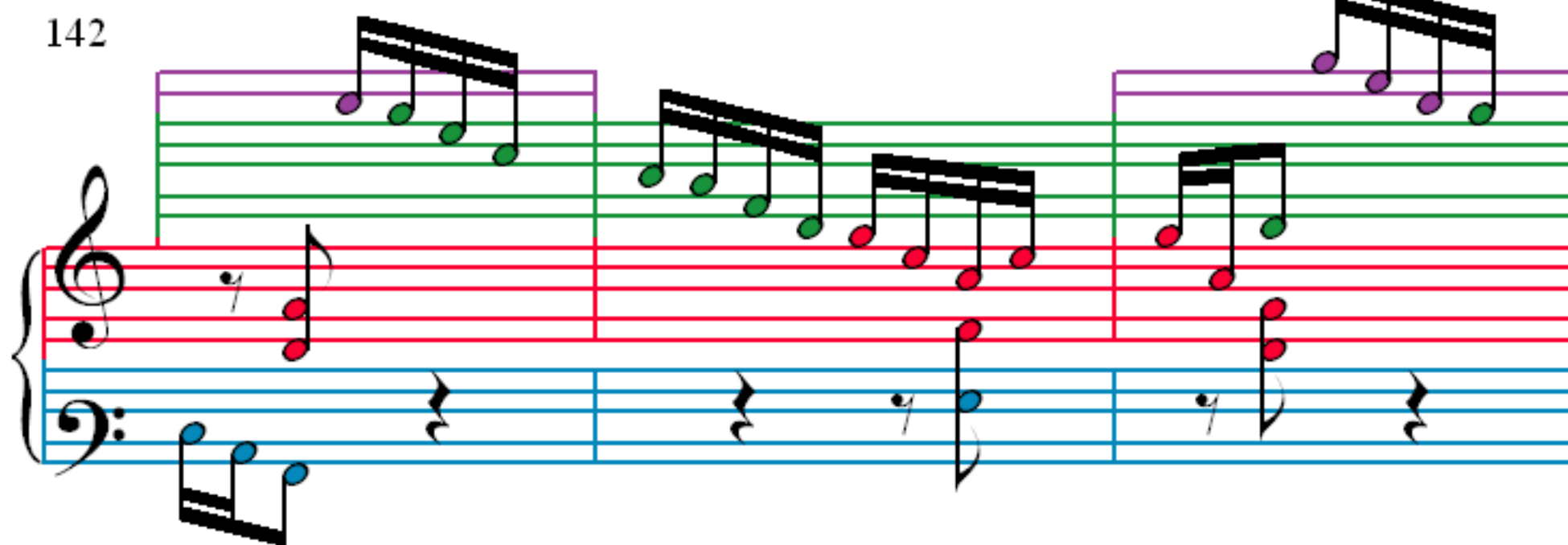
136



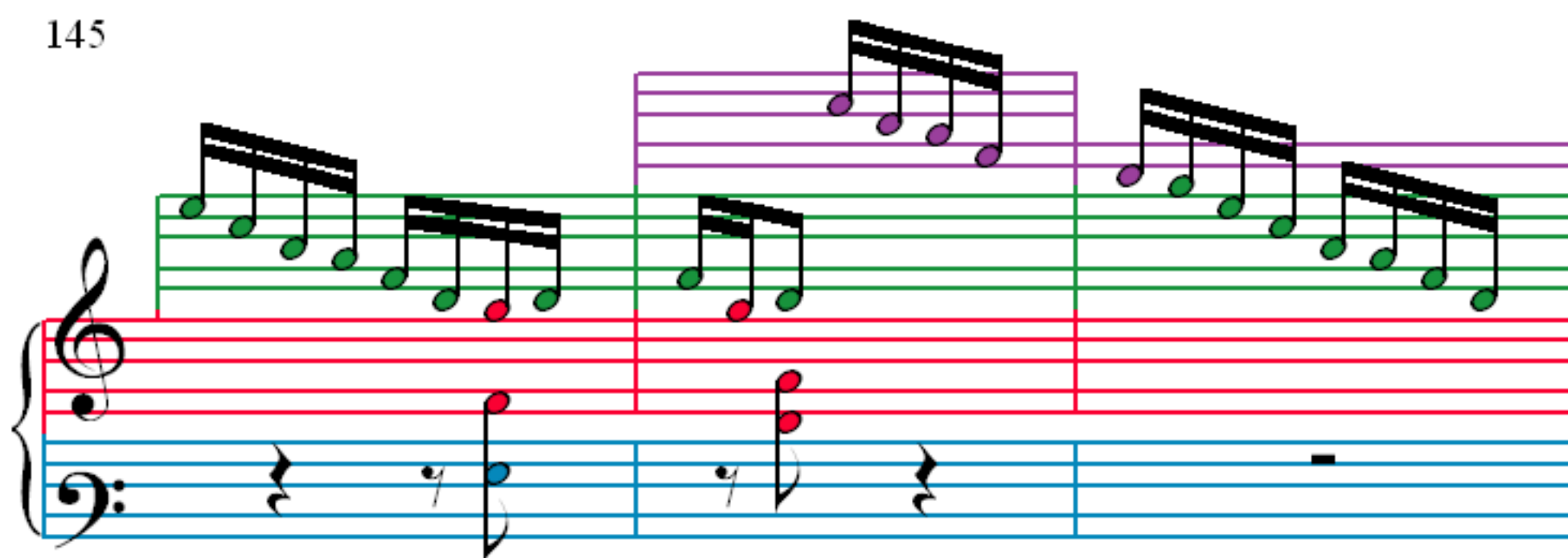
139



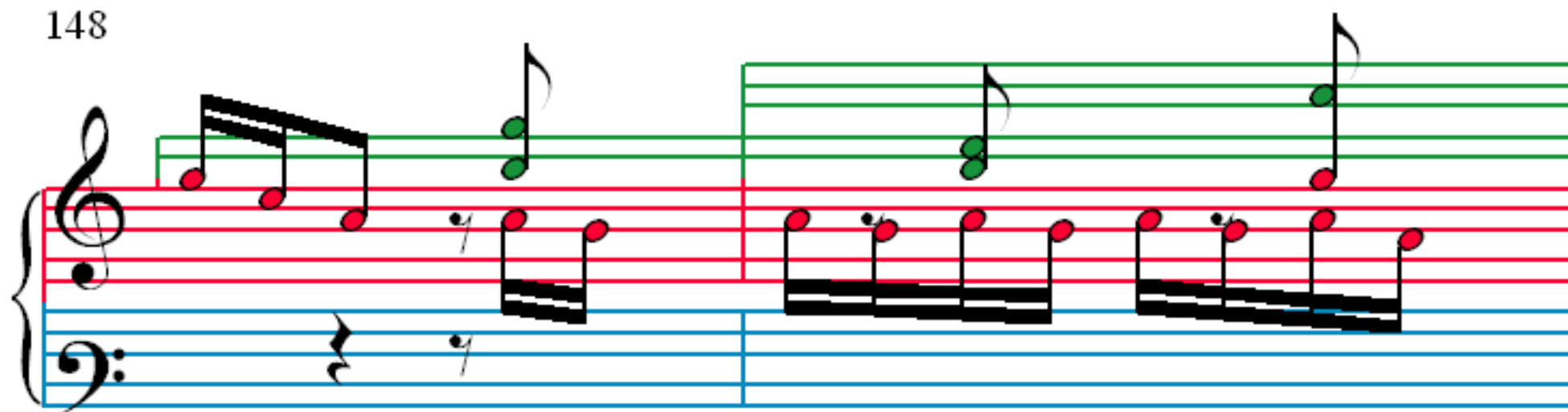
142



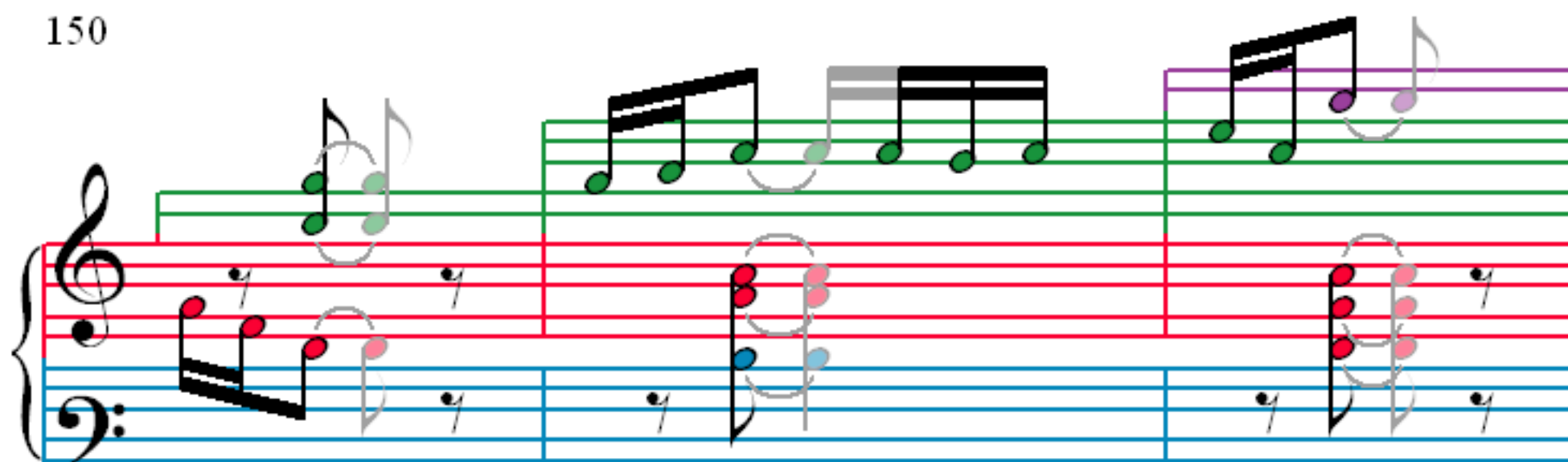
145



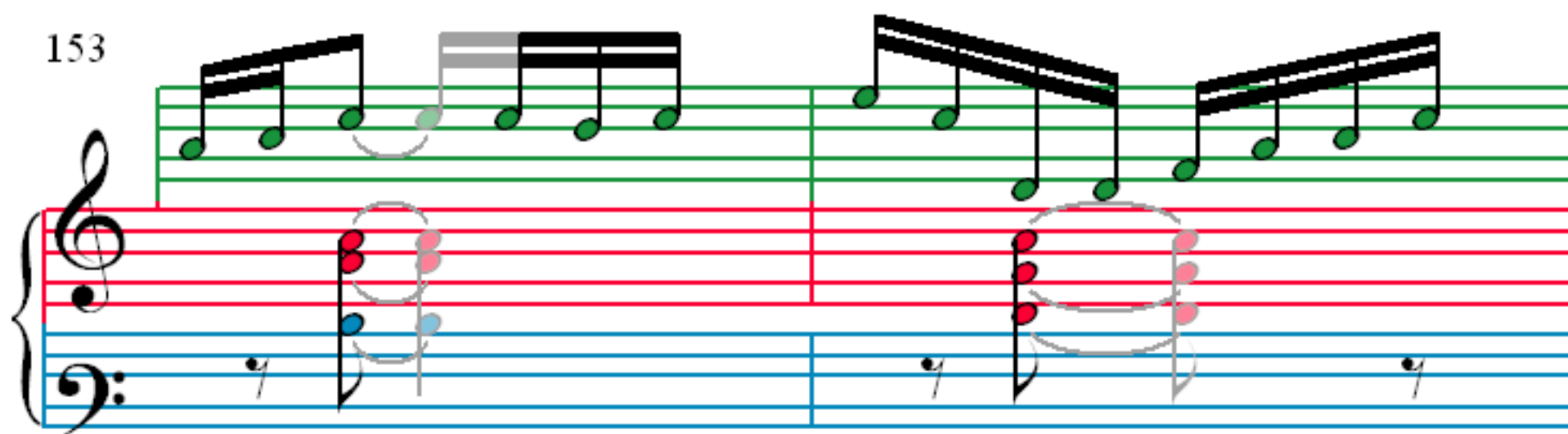
148



150



153



155

