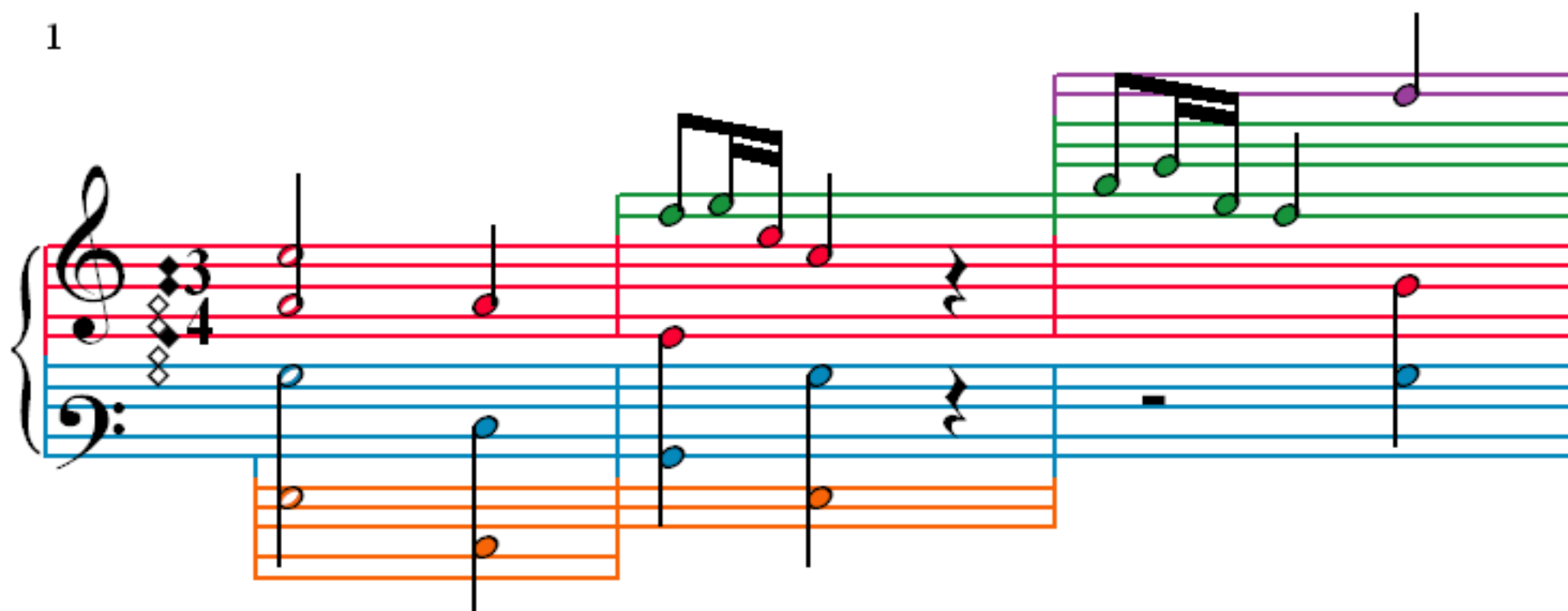


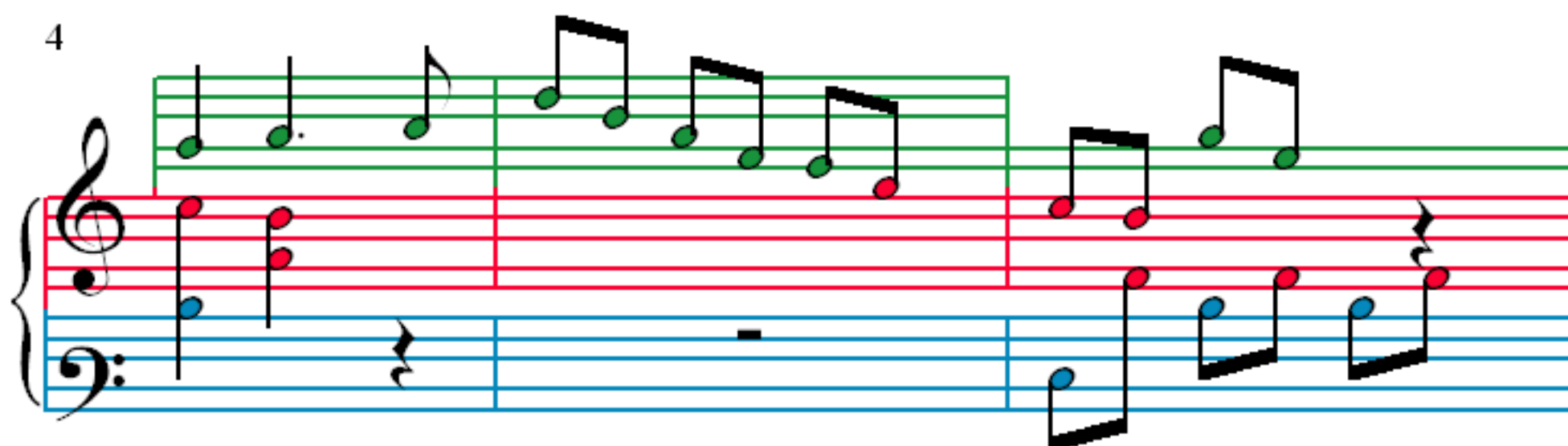
Sonate Opus KV 331 - Menuetto

W. A. Mozart (1756–1791)

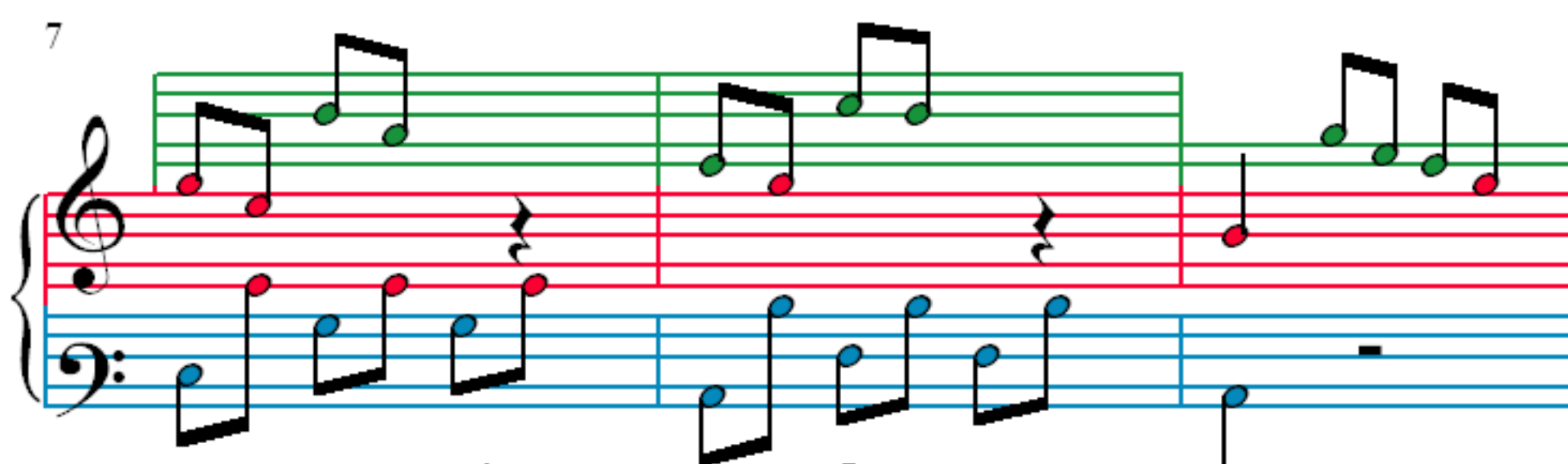
1



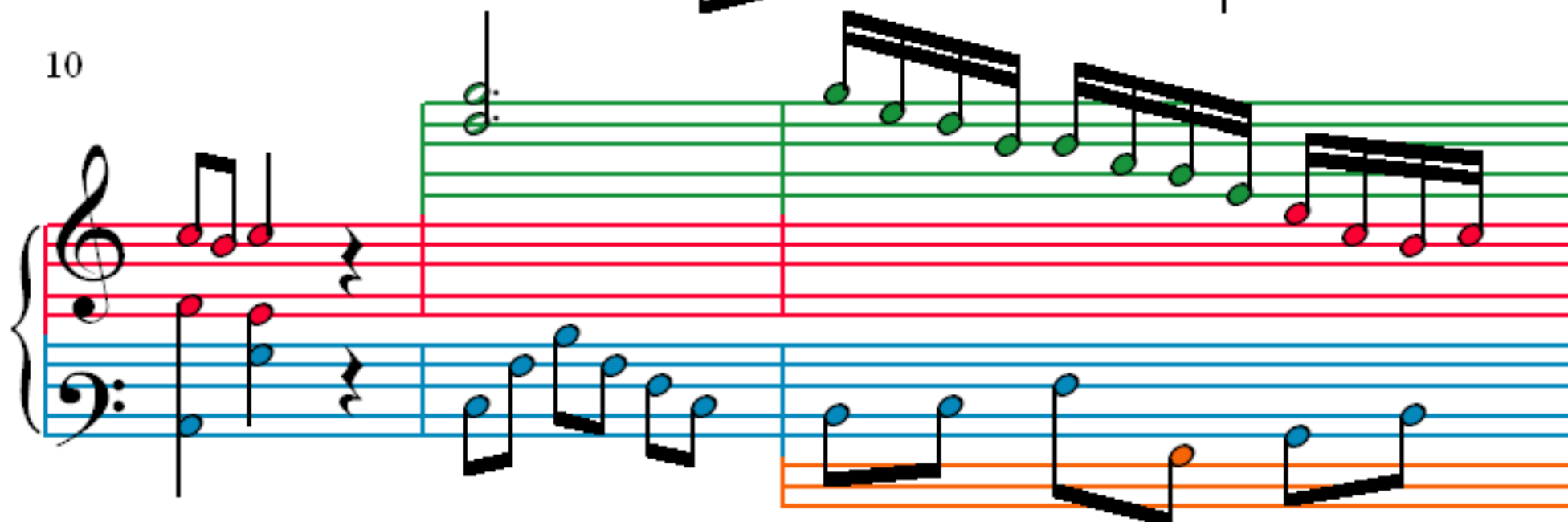
4



7



10



13

16

19

22

25

28

31

34

37

40

43

46

49

Measures 49-51 of a minuet. The notation is in treble and bass clefs. The treble staff has a red line and a green line. The bass staff has a blue line and an orange line. The music features a sequence of eighth and sixteenth notes, with a final measure containing a whole note and a half note.

52

Measures 52-54 of a minuet. The notation is in treble and bass clefs. The treble staff has a red line and a green line. The bass staff has a blue line and an orange line. The music features a sequence of eighth and sixteenth notes, with a final measure containing a whole note and a half note.

55

Measures 55-57 of a minuet. The notation is in treble and bass clefs. The treble staff has a red line and a green line. The bass staff has a blue line and an orange line. The music features a sequence of eighth and sixteenth notes, with a final measure containing a whole note and a half note.

58

Measures 58-60 of a minuet. The notation is in treble and bass clefs. The treble staff has a red line and a green line. The bass staff has a blue line and an orange line. The music features a sequence of eighth and sixteenth notes, with a final measure containing a whole note and a half note.

61

Measures 61-63. Treble clef staff: measure 61 (purple), measure 62 (green), measure 63 (red). Bass clef staff: measure 61 (blue), measure 62 (blue), measure 63 (red).

64

Measures 64-66. Treble clef staff: measure 64 (purple), measure 65 (green), measure 66 (red). Bass clef staff: measure 64 (blue), measure 65 (blue), measure 66 (red). An orange box is present at the bottom right of the bass clef staff.

67

Measures 67-69. Treble clef staff: measure 67 (green), measure 68 (green), measure 69 (red). Bass clef staff: measure 67 (blue), measure 68 (blue), measure 69 (red).

70

Measures 70-72. Treble clef staff: measure 70 (green), measure 71 (green), measure 72 (red). Bass clef staff: measure 70 (blue), measure 71 (blue), measure 72 (red).

73

Measures 73-76 of the Minuet in G major, K. 331. The notation is in treble and bass clefs. The right hand (treble) features a melody with eighth and sixteenth notes, while the left hand (bass) provides a rhythmic accompaniment with eighth notes. The key signature is one sharp (F#). The notation is color-coded: red for the main melody, blue for the accompaniment, and green for the final melodic phrase. A purple box highlights the first measure of the system.

77

Measures 77-80 of the Minuet in G major, K. 331. The notation continues the melody and accompaniment. The right hand features a melodic phrase with a trill in measure 79. The left hand continues the rhythmic accompaniment. The notation is color-coded: red for the main melody, blue for the accompaniment, and green for the final melodic phrase. A purple box highlights the first measure of the system.

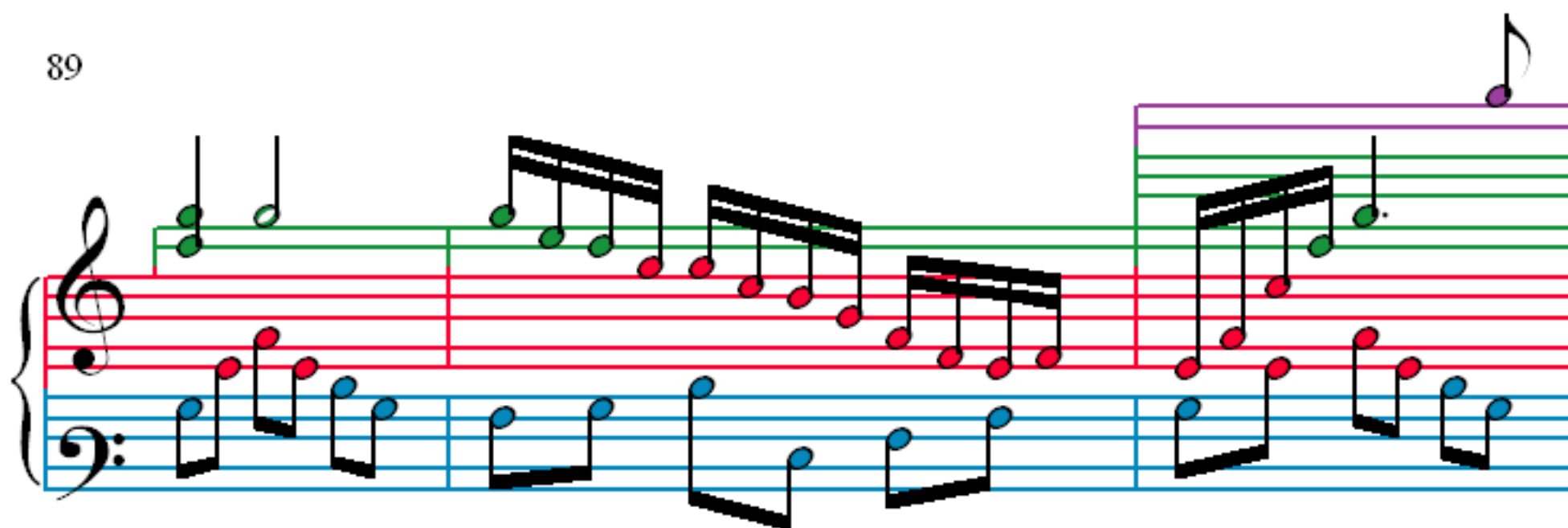
81

Measures 81-84 of the Minuet in G major, K. 331. The notation continues the melody and accompaniment. The right hand features a melodic phrase with a trill in measure 83. The left hand continues the rhythmic accompaniment. The notation is color-coded: red for the main melody, blue for the accompaniment, and green for the final melodic phrase. A purple box highlights the first measure of the system.

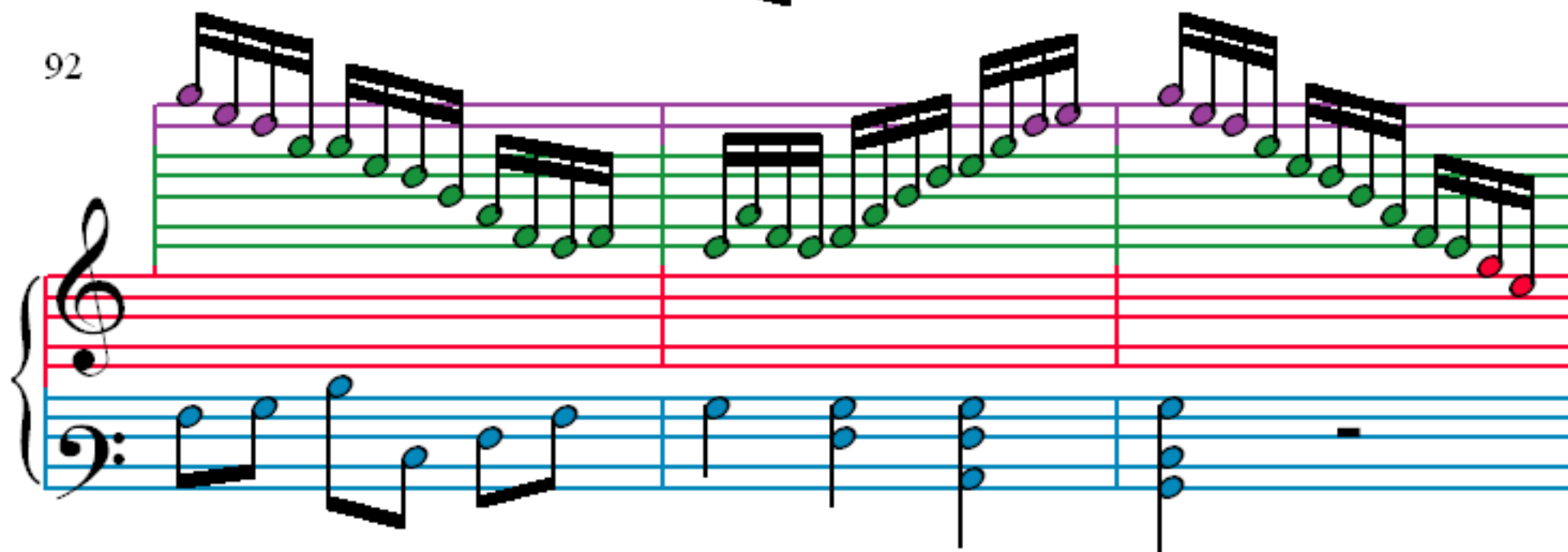
85

Measures 85-88 of the Minuet in G major, K. 331. The notation continues the melody and accompaniment. The right hand features a melodic phrase with a trill in measure 87. The left hand continues the rhythmic accompaniment. The notation is color-coded: red for the main melody, blue for the accompaniment, and green for the final melodic phrase. A purple box highlights the first measure of the system.

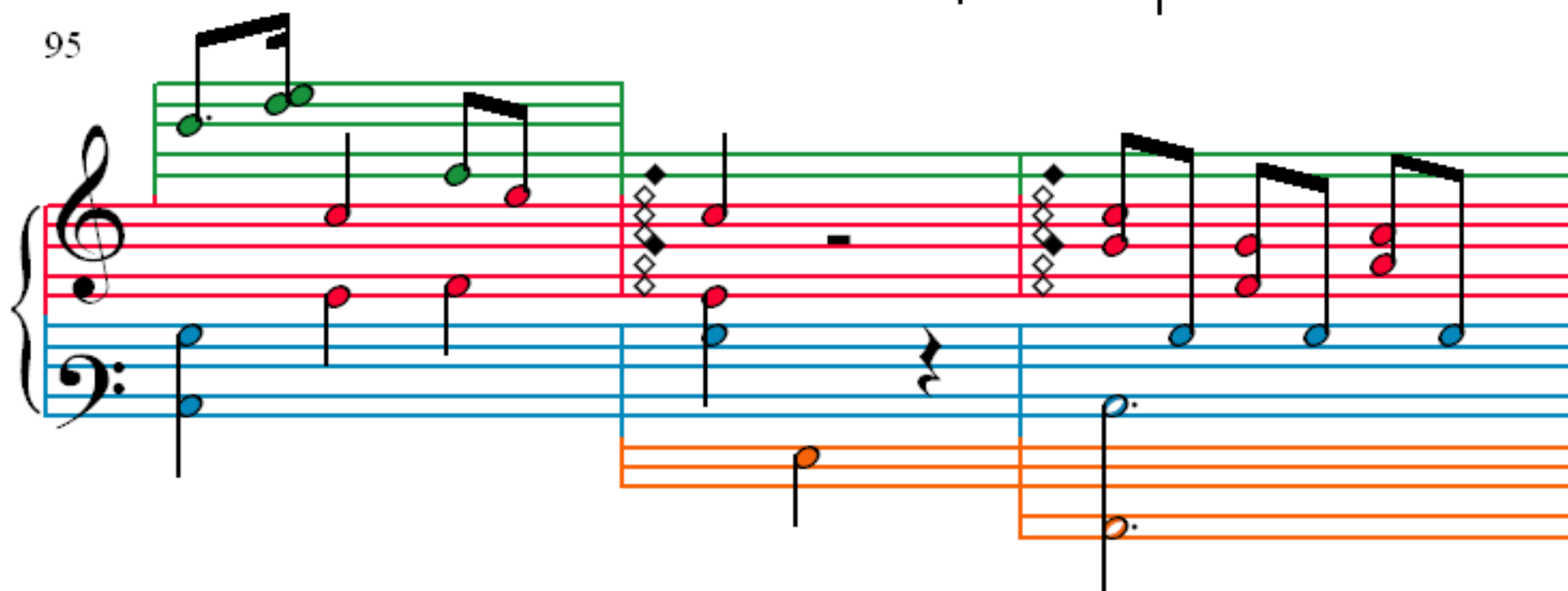
89



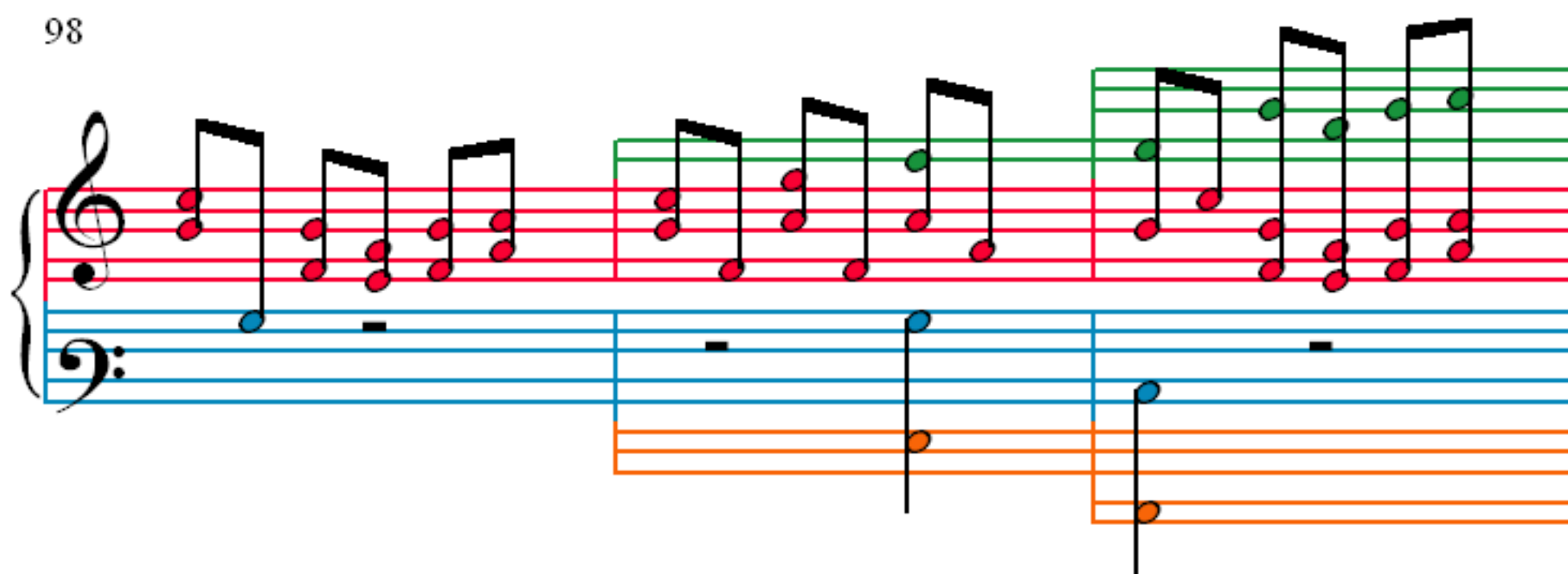
92



95



98



101

Measures 101-103. Treble clef: Measure 101 has three eighth notes (G4, A4, B4) with green heads. Measure 102 has four eighth notes (C5, B4, A4, G4) with green heads. Measure 103 has four eighth notes (F4, E4, D4, C4) with green heads. Bass clef: Measure 101 has a whole rest. Measure 102 has a whole rest. Measure 103 has a half note (C3) with a blue head, followed by a half note (D3) with a blue head, and a half note (E3) with an orange head.

104

Measures 104-106. Treble clef: Measure 104 has four eighth notes (G4, A4, B4, C5) with green heads. Measure 105 has four eighth notes (B4, A4, G4, F4) with green heads. Measure 106 has four eighth notes (E4, D4, C4, B3) with green heads. Bass clef: Measure 104 has a half note (C3) with a blue head, followed by a half note (D3) with a blue head, and a half note (E3) with an orange head. Measure 105 has a whole rest. Measure 106 has a whole rest.

107

Measures 107-109. Treble clef: Measure 107 has four eighth notes (G4, A4, B4, C5) with green heads. Measure 108 has four eighth notes (B4, A4, G4, F4) with green heads. Measure 109 has four eighth notes (E4, D4, C4, B3) with green heads. Bass clef: Measure 107 has a half note (C3) with a blue head, followed by a half note (D3) with a blue head, and a half note (E3) with an orange head. Measure 108 has a whole rest. Measure 109 has a whole rest.

110

Measures 110-112. Treble clef: Measure 110 has four eighth notes (G4, A4, B4, C5) with green heads. Measure 111 has four eighth notes (B4, A4, G4, F4) with green heads. Measure 112 has four eighth notes (E4, D4, C4, B3) with green heads. Bass clef: Measure 110 has a half note (C3) with a blue head, followed by a half note (D3) with a blue head, and a half note (E3) with an orange head. Measure 111 has a whole rest. Measure 112 has a whole rest.

113

116

119

122

125

128

130

133

136

Measures 136-138 of the Minuet in G major. Measure 136: Treble clef has a half note G4, quarter note A4, quarter note B4, quarter note C5. Bass clef has a whole rest. Measure 137: Treble clef has a half note D5, quarter note C5, quarter note B4, quarter note A4. Bass clef has a half note G3, quarter note A3, quarter note B3, quarter note C4. Measure 138: Treble clef has a half note D5, quarter note C5, quarter note B4, quarter note A4. Bass clef has a half note G3, quarter note A3, quarter note B3, quarter note C4. A purple box highlights the treble clef staff in measures 137 and 138.

139

Measures 139-141 of the Minuet in G major. Measure 139: Treble clef has a half note D5, quarter note C5, quarter note B4, quarter note A4. Bass clef has a half note G3, quarter note A3, quarter note B3, quarter note C4. Measure 140: Treble clef has a half note D5, quarter note C5, quarter note B4, quarter note A4. Bass clef has a half note G3, quarter note A3, quarter note B3, quarter note C4. Measure 141: Treble clef has a half note D5, quarter note C5, quarter note B4, quarter note A4. Bass clef has a half note G3, quarter note A3, quarter note B3, quarter note C4. A purple box highlights the treble clef staff in measures 139 and 140.

142

Measures 142-144 of the Minuet in G major. Measure 142: Treble clef has a half note D5, quarter note C5, quarter note B4, quarter note A4. Bass clef has a half note G3, quarter note A3, quarter note B3, quarter note C4. Measure 143: Treble clef has a half note D5, quarter note C5, quarter note B4, quarter note A4. Bass clef has a half note G3, quarter note A3, quarter note B3, quarter note C4. Measure 144: Treble clef has a half note D5, quarter note C5, quarter note B4, quarter note A4. Bass clef has a half note G3, quarter note A3, quarter note B3, quarter note C4. A purple box highlights the treble clef staff in measure 142.

145

Measures 145-147 of the Minuet in G major. Measure 145: Treble clef has a half note D5, quarter note C5, quarter note B4, quarter note A4. Bass clef has a half note G3, quarter note A3, quarter note B3, quarter note C4. Measure 146: Treble clef has a half note D5, quarter note C5, quarter note B4, quarter note A4. Bass clef has a half note G3, quarter note A3, quarter note B3, quarter note C4. Measure 147: Treble clef has a half note D5, quarter note C5, quarter note B4, quarter note A4. Bass clef has a half note G3, quarter note A3, quarter note B3, quarter note C4.

148

Measures 148-150. Treble clef: eighth notes. Bass clef: whole notes. An orange staff below shows a single note.

151

Measures 151-153. Treble clef: eighth notes. Bass clef: whole notes. An orange staff below shows a three-note pattern.

154

Measures 154-156. Treble clef: eighth notes. Bass clef: whole notes. An orange staff below shows a three-note pattern.

157

Measures 157-159. Treble clef: eighth notes. Bass clef: eighth notes. An orange staff below shows a single note.

160

163

166

169

172

Measures 172-174 of the Minuet in G major. Measure 172 features a treble staff with a quarter note G4, an eighth note A4, and a quarter note B4, followed by a half note G4. The bass staff has a whole rest. Measure 173 shows a treble staff with a quarter note G4, a quarter note A4, and a quarter note B4, followed by a half note G4. The bass staff has a quarter note G3, a quarter note A3, and a quarter note B3, followed by a half note G3. Measure 174 shows a treble staff with a quarter note G4, a quarter note A4, and a quarter note B4, followed by a half note G4. The bass staff has a quarter note G3, a quarter note A3, and a quarter note B3, followed by a half note G3. A fourth staff with an orange background and a single note G3 is shown below the bass staff.

175

Measures 175-177 of the Minuet in G major. Measure 175 features a treble staff with a quarter note G4, a quarter note A4, and a quarter note B4, followed by a half note G4. The bass staff has a quarter note G3, a quarter note A3, and a quarter note B3, followed by a half note G3. Measure 176 shows a treble staff with a quarter note G4, a quarter note A4, and a quarter note B4, followed by a half note G4. The bass staff has a quarter note G3, a quarter note A3, and a quarter note B3, followed by a half note G3. Measure 177 shows a treble staff with a quarter note G4, a quarter note A4, and a quarter note B4, followed by a half note G4. The bass staff has a quarter note G3, a quarter note A3, and a quarter note B3, followed by a half note G3.

178

Measures 178-180 of the Minuet in G major. Measure 178 features a treble staff with a quarter note G4, a quarter note A4, and a quarter note B4, followed by a half note G4. The bass staff has a quarter note G3, a quarter note A3, and a quarter note B3, followed by a half note G3. Measure 179 shows a treble staff with a quarter note G4, a quarter note A4, and a quarter note B4, followed by a half note G4. The bass staff has a quarter note G3, a quarter note A3, and a quarter note B3, followed by a half note G3. Measure 180 shows a treble staff with a quarter note G4, a quarter note A4, and a quarter note B4, followed by a half note G4. The bass staff has a quarter note G3, a quarter note A3, and a quarter note B3, followed by a half note G3.

181

Measures 181-183 of the Minuet in G major. Measure 181 features a treble staff with a quarter note G4, a quarter note A4, and a quarter note B4, followed by a half note G4. The bass staff has a quarter note G3, a quarter note A3, and a quarter note B3, followed by a half note G3. Measure 182 shows a treble staff with a quarter note G4, a quarter note A4, and a quarter note B4, followed by a half note G4. The bass staff has a quarter note G3, a quarter note A3, and a quarter note B3, followed by a half note G3. Measure 183 shows a treble staff with a quarter note G4, a quarter note A4, and a quarter note B4, followed by a half note G4. The bass staff has a quarter note G3, a quarter note A3, and a quarter note B3, followed by a half note G3.

184

Measures 184-186. Treble clef: eighth notes. Bass clef: whole notes. A blue staff with a whole note is shown below the bass staff.

187

Measures 187-189. Treble clef: eighth notes. Bass clef: whole notes. A blue staff with a whole note is shown below the bass staff.

190

Measures 190-192. Treble clef: eighth notes. Bass clef: whole notes. A blue staff with a whole note is shown below the bass staff.

193

Measures 193-195. Treble clef: eighth notes. Bass clef: eighth notes. A blue staff with a whole note is shown below the bass staff.

196

199

202

205

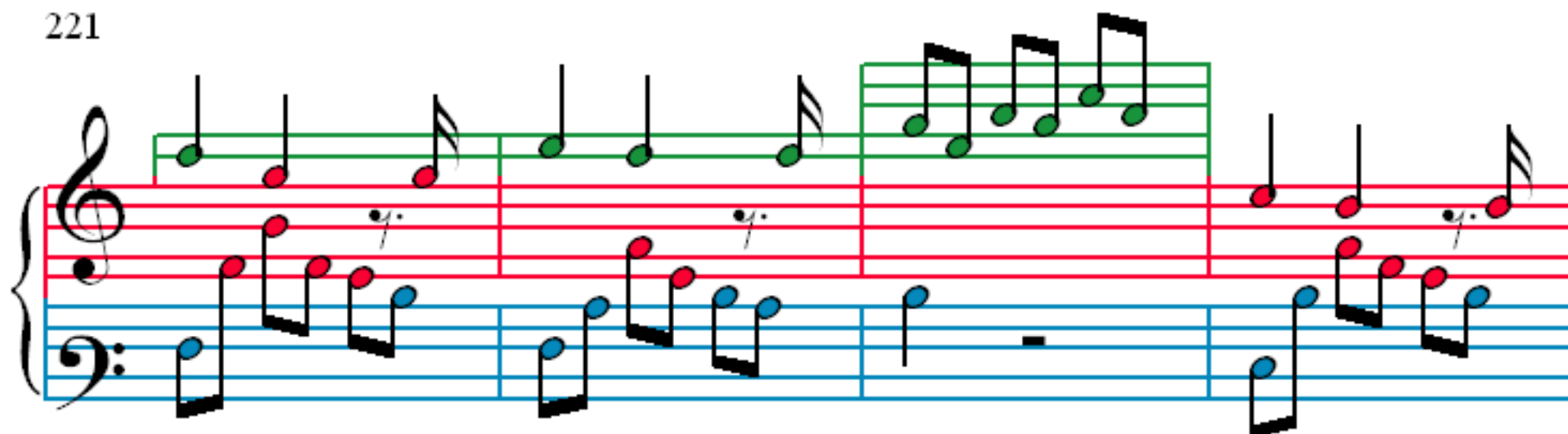
208

211

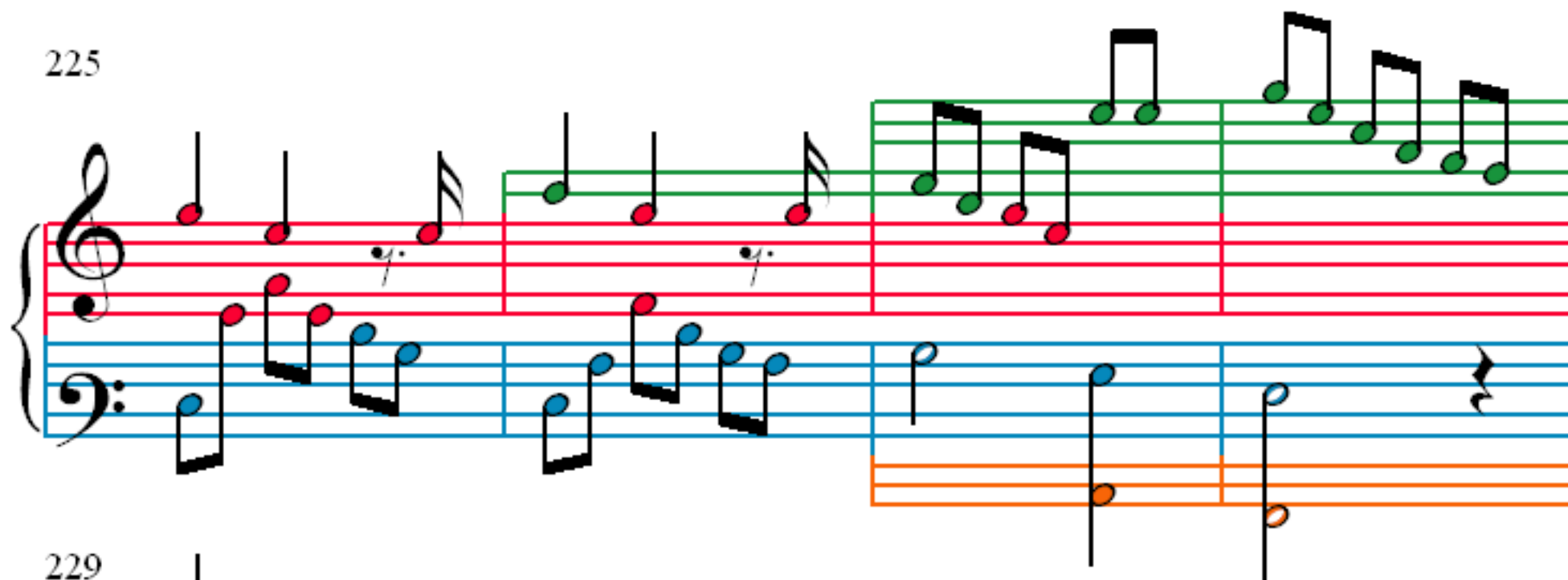
214

217

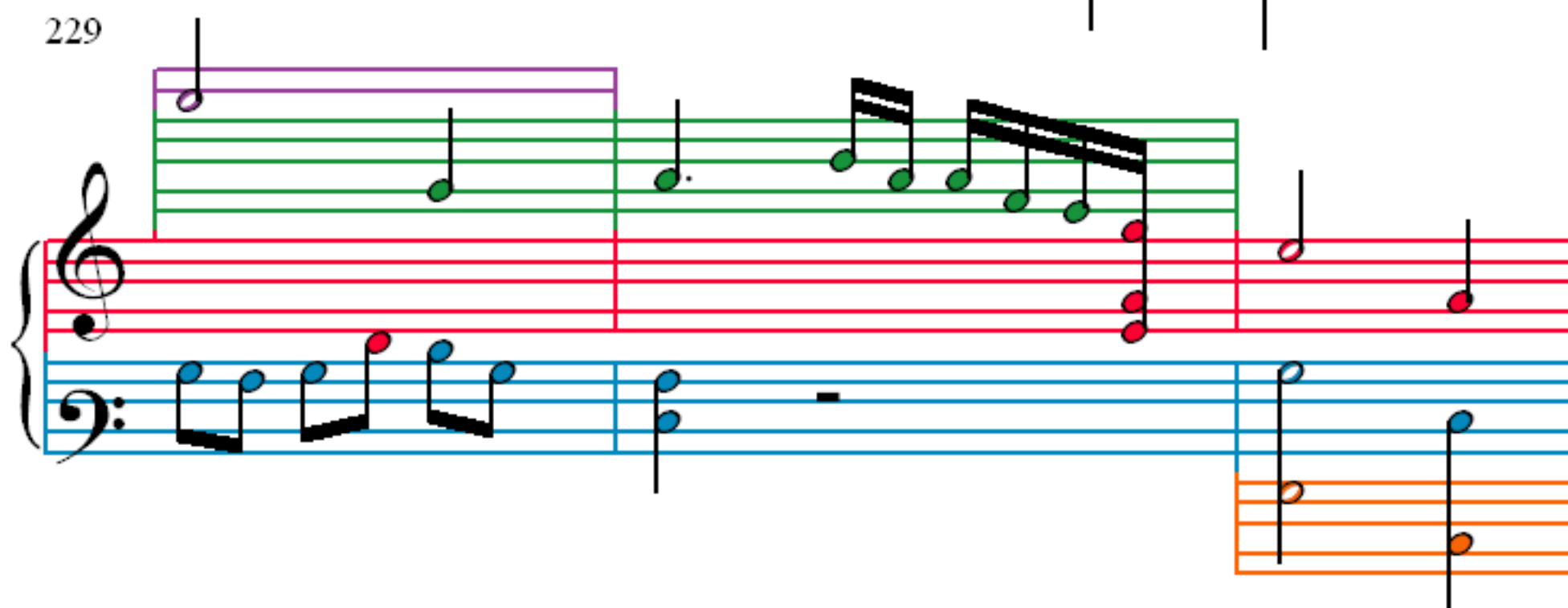
221



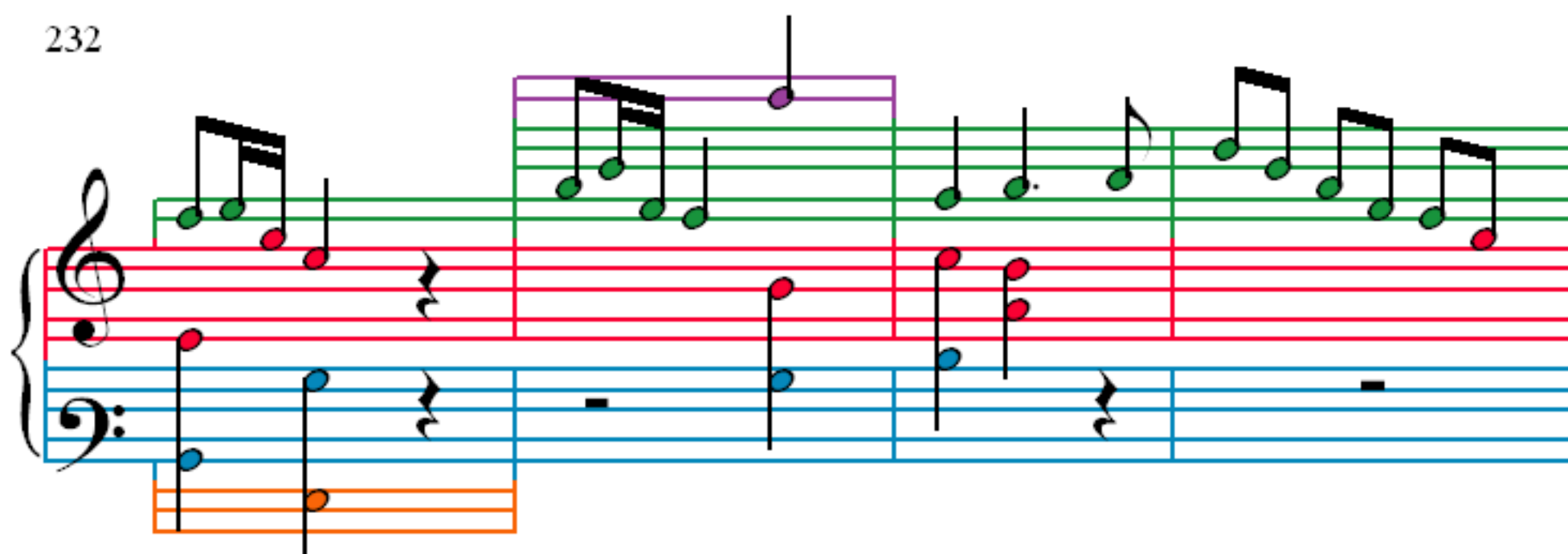
225



229



232



236

240

243

246