

# Sonata No. 18

## 3rd Movement: Allegro assai

W. A. Mozart (1756–1791)

1

6

11

16

The image displays the first 20 measures of the 3rd movement of Sonata No. 18 by Wolfgang Amadeus Mozart. The notation is presented in a system of four staves, each corresponding to a measure number (1, 6, 11, 16). Each staff consists of a grand staff (treble and bass clefs) with a red line for the treble staff and a blue line for the bass staff. The music is in 3/4 time and G major. The notation is color-coded: green for the right hand (treble staff), red for the left hand (bass staff), and blue for the right hand (treble staff). The first measure (1) shows a treble staff with a G4 quarter note, an F#4 quarter note, and an E4 quarter note, and a bass staff with a G2 half note. The second measure (6) shows a treble staff with a G4 quarter note, an F#4 quarter note, and an E4 quarter note, and a bass staff with a G2 half note. The third measure (11) shows a treble staff with a G4 quarter note, an F#4 quarter note, and an E4 quarter note, and a bass staff with a G2 half note. The fourth measure (16) shows a treble staff with a G4 quarter note, an F#4 quarter note, and an E4 quarter note, and a bass staff with a G2 half note. The notation is color-coded: green for the right hand (treble staff), red for the left hand (bass staff), and blue for the right hand (treble staff).

20

24

28

32

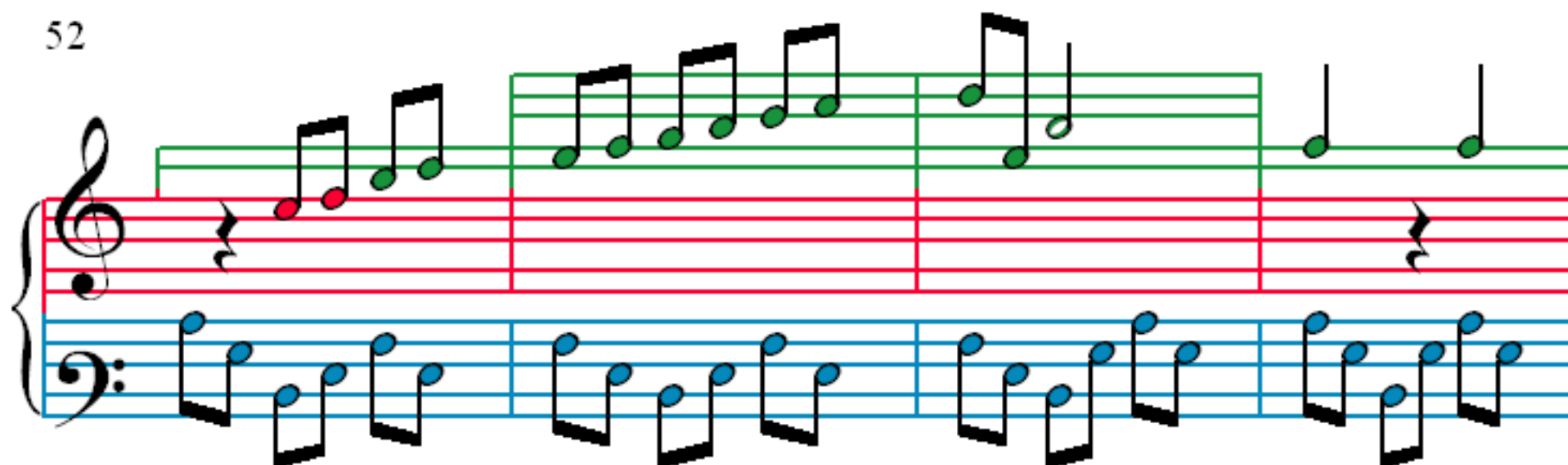
Measures 35-38 of Sonata No. 18. The notation is presented in a grand staff with three systems. The first system (measures 35-36) features a treble staff with green notes, a red staff with red notes, and a blue bass staff with blue notes. The second system (measures 37-38) continues this pattern, with the red staff showing a whole rest in measure 38. A purple staff is visible in the background of the first system.

Measures 39-43 of Sonata No. 18. The notation is presented in a grand staff with two systems. The first system (measures 39-41) shows the treble staff with a whole rest in measure 39, followed by green notes in measure 40 and red notes in measure 41. The second system (measures 42-43) continues with red notes in the treble staff and blue notes in the bass staff.

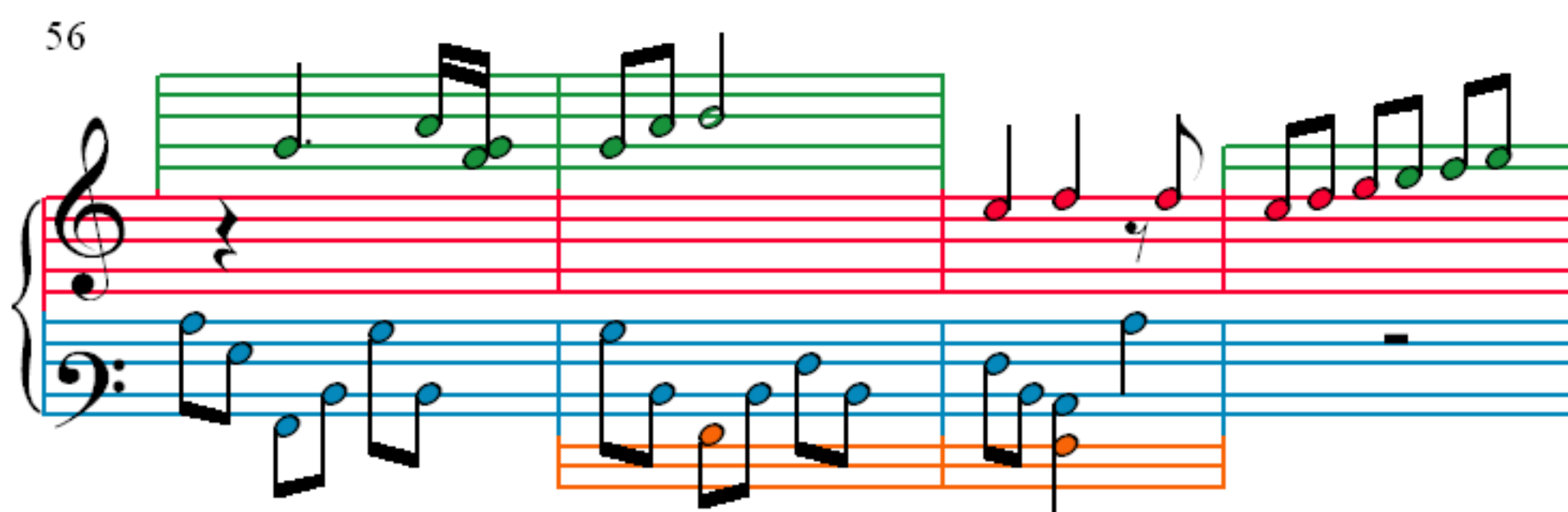
Measures 44-47 of Sonata No. 18. The notation is presented in a grand staff with two systems. The first system (measures 44-45) shows the treble staff with red notes and the bass staff with blue notes. The second system (measures 46-47) continues with red notes in the treble staff and blue notes in the bass staff.

Measures 48-51 of Sonata No. 18. The notation is presented in a grand staff with two systems. The first system (measures 48-49) shows the treble staff with green notes and the bass staff with blue notes. The second system (measures 50-51) continues with green notes in the treble staff and blue notes in the bass staff.

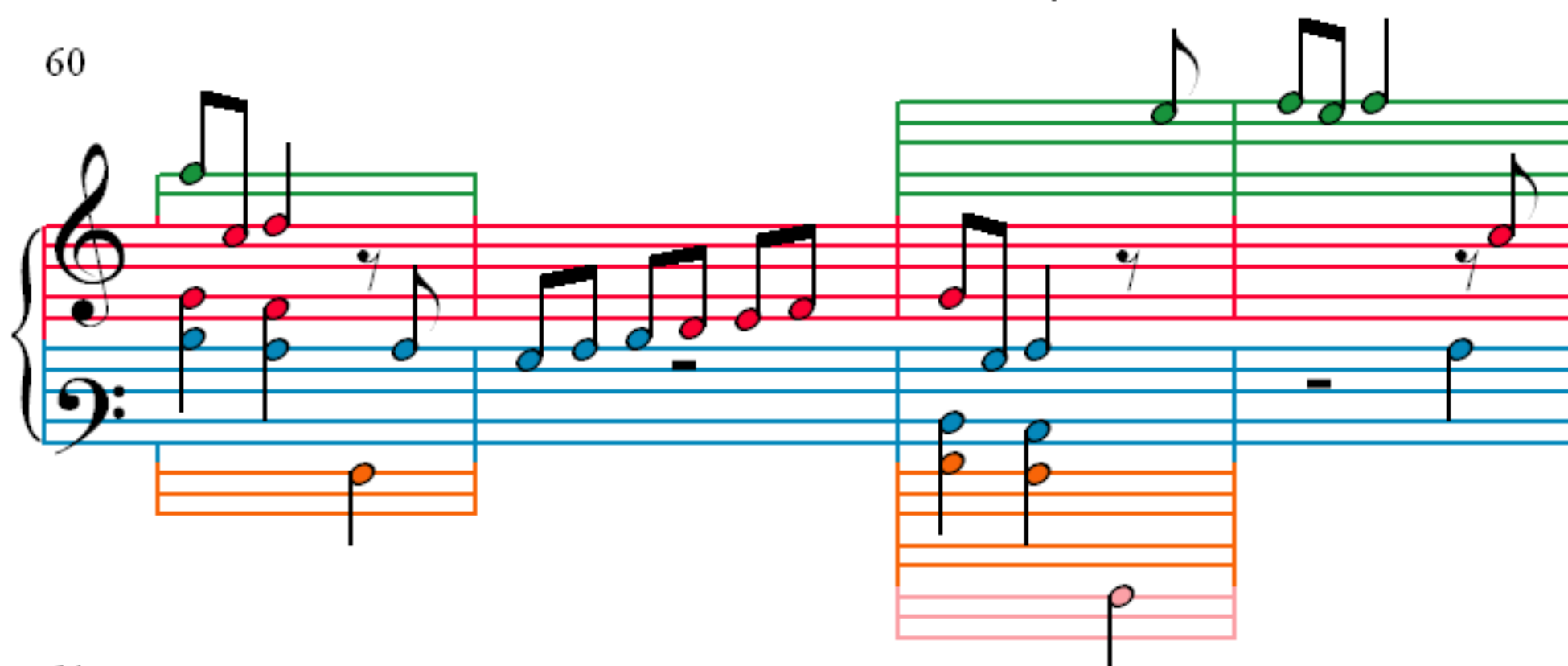
52



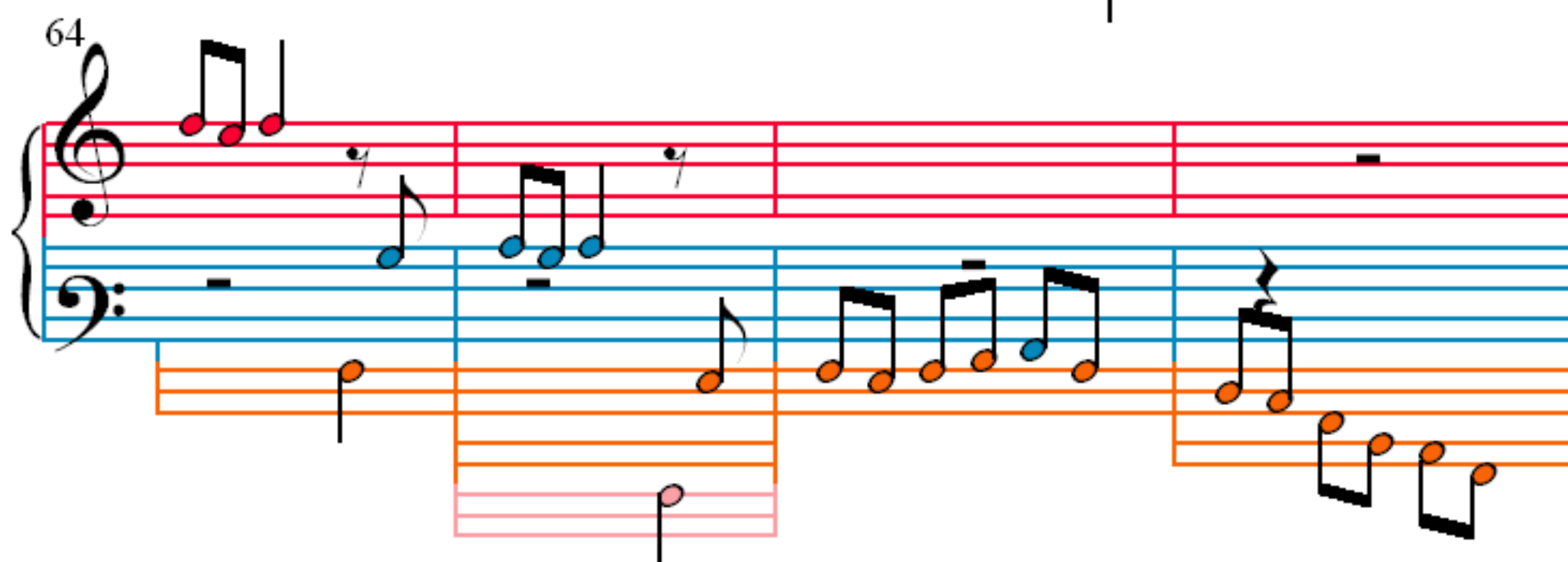
56



60



64



68

Measures 68-71 of the musical score. Measure 68 features a whole rest in the treble and a half note in the bass. Measures 69-71 show a complex texture with multiple staves. The treble staff has a half note in measure 69, a half note in measure 70, and a half note in measure 71. The bass staff has a half note in measure 69, a half note in measure 70, and a half note in measure 71. A third staff, highlighted in orange, contains a half note in measure 69, a half note in measure 70, and a half note in measure 71. A fourth staff, highlighted in pink, contains a half note in measure 69, a half note in measure 70, and a half note in measure 71.

72

Measures 72-75 of the musical score. Measure 72 features a half note in the treble and a half note in the bass. Measures 73-75 show a complex texture with multiple staves. The treble staff has a half note in measure 72, a half note in measure 73, a half note in measure 74, and a half note in measure 75. The bass staff has a half note in measure 72, a half note in measure 73, a half note in measure 74, and a half note in measure 75.

76

Measures 76-78 of the musical score. Measure 76 features a half note in the treble and a half note in the bass. Measures 77-78 show a complex texture with multiple staves. The treble staff has a half note in measure 76, a half note in measure 77, and a half note in measure 78. The bass staff has a half note in measure 76, a half note in measure 77, and a half note in measure 78.

79

Measures 79-82 of the musical score. Measure 79 features a half note in the treble and a half note in the bass. Measures 80-82 show a complex texture with multiple staves. The treble staff has a half note in measure 79, a half note in measure 80, a half note in measure 81, and a half note in measure 82. The bass staff has a half note in measure 79, a half note in measure 80, a half note in measure 81, and a half note in measure 82.

83

Measures 83-86. Treble clef: red notes. Bass clef: blue notes. Measure 86 includes an orange note on a lower staff.

87

Measures 87-90. Treble clef: red notes. Bass clef: blue notes. Measure 90 includes an orange note on a lower staff.

91

Measures 91-94. Treble clef: red notes. Bass clef: blue notes. Measure 94 includes an orange note on a lower staff.

95

Measures 95-98. Treble clef: red notes. Bass clef: blue notes. Measure 98 includes an orange note on a lower staff.

Measures 99-102. The system consists of a grand staff with a treble and bass clef. The treble staff has a red line and a green line. The bass staff has a blue line and an orange line. The notation includes various note values and rests, with some notes highlighted in green and others in red. A purple box highlights a group of notes in the treble staff across measures 99 and 100.

Measures 103-107. The system consists of a grand staff with a treble and bass clef. The treble staff has a red line and a green line. The bass staff has a blue line and an orange line. The notation includes various note values and rests, with some notes highlighted in green and others in red.

Measures 108-112. The system consists of a grand staff with a treble and bass clef. The treble staff has a red line and a green line. The bass staff has a blue line and an orange line. The notation includes various note values and rests, with some notes highlighted in green and others in red. A purple box highlights a group of notes in the treble staff across measures 108 and 109.

Measures 113-117. The system consists of a grand staff with a treble and bass clef. The treble staff has a red line and a green line. The bass staff has a blue line and an orange line. The notation includes various note values and rests, with some notes highlighted in green and others in red. A purple box highlights a group of notes in the treble staff across measures 113 and 114.



118

Measures 118-121. Treble clef: Measure 118 has red notes (F4, G4, A4, B4); measure 119 has red notes (C5, B4, A4, G4); measure 120 has green notes (F4, G4, A4, B4) with a blacked-out staff; measure 121 has green notes (C5, B4, A4, G4). Bass clef: Measure 118 has blue notes (F3, G3, A3, B3); measure 119 has blue notes (C4, B3, A3, G3); measure 120 has blue notes (F3, G3, A3, B3); measure 121 has blue notes (C4, B3, A3, G3). An orange box highlights the bass line in measure 119.

122

Measures 122-124. Treble clef: Measure 122 has green notes (F4, G4, A4, B4) with a blacked-out staff; measure 123 has green notes (C5, B4, A4, G4); measure 124 has green notes (F4, G4, A4, B4) with a blacked-out staff. Bass clef: Measure 122 has blue notes (F3, G3, A3, B3); measure 123 has blue notes (C4, B3, A3, G3); measure 124 has blue notes (F3, G3, A3, B3). An orange box highlights the bass line in measure 124.

125

Measures 125-128. Treble clef: Measure 125 has green notes (F4, G4, A4, B4); measure 126 has green notes (C5, B4, A4, G4); measure 127 has green notes (F4, G4, A4, B4); measure 128 has green notes (C5, B4, A4, G4) with a purple box. Bass clef: Measure 125 has blue notes (F3, G3, A3, B3); measure 126 has blue notes (C4, B3, A3, G3); measure 127 has blue notes (F3, G3, A3, B3); measure 128 has blue notes (C4, B3, A3, G3). An orange box highlights the bass line in measure 125.

129

Measures 129-132. Treble clef: Measure 129 has a green note (F4) with a green box; measure 130 has red notes (F4, G4, A4, B4); measure 131 has red notes (C5, B4, A4, G4); measure 132 has red notes (F4, G4, A4, B4). Bass clef: Measure 129 has a blue note (F3) with a blue box; measure 130 has blue notes (C4, B3, A3, G3); measure 131 has blue notes (F3, G3, A3, B3); measure 132 has blue notes (C4, B3, A3, G3).



133

Measures 133-136 of the musical score. The system features a grand staff with treble and bass clefs. The right hand (treble clef) contains green notes, while the left hand (bass clef) contains blue notes. Red notes are present in the right hand in measures 133, 134, 135, and 136. A small orange staff with a single note is positioned below the bass staff in measure 133. Slurs and ties are used to connect notes across measures.

137

Measures 137-140 of the musical score. The system features a grand staff with treble and bass clefs. The right hand (treble clef) contains green notes, while the left hand (bass clef) contains blue notes. Red notes are present in the right hand in measures 137, 138, 139, and 140. A small orange staff with a single note is positioned below the bass staff in measure 137. Slurs and ties are used to connect notes across measures.

141

Measures 141-144 of the musical score. The system features a grand staff with treble and bass clefs. The right hand (treble clef) contains green notes, while the left hand (bass clef) contains blue notes. Red notes are present in the right hand in measures 141, 142, 143, and 144. A small orange staff with a single note is positioned below the bass staff in measure 141. Slurs and ties are used to connect notes across measures.

145

Measures 145-148 of the musical score. The system features a grand staff with treble and bass clefs. The right hand (treble clef) contains green notes, while the left hand (bass clef) contains blue notes. Red notes are present in the right hand in measures 145, 146, 147, and 148. A small orange staff with a single note is positioned below the bass staff in measure 145. Slurs and ties are used to connect notes across measures.

150

Measures 150-154. The right hand (treble clef) features a melody with green notes and purple accents, while the left hand (bass clef) plays a steady eighth-note accompaniment with blue notes. Measure 151 includes a red '7' marking. Measure 153 has a purple box highlighting the final two notes of the right-hand phrase.

155

Measures 155-159. The right hand has rests in measures 155-157, with a purple box in measure 155 highlighting a chord. In measure 159, the right hand plays a single green note. The left hand continues its eighth-note accompaniment with blue notes. Measure 155 includes an orange box highlighting a chord in the left hand.

160

Measures 160-164. The right hand melody (green notes) resumes in measure 160. Measures 162 and 164 include red '7' markings. A purple box in measure 164 highlights the final two notes of the right-hand phrase. The left hand accompaniment (blue notes) continues throughout.

165

Measures 165-169. The right hand features a melody with green notes and red accents. The left hand plays a more active eighth-note accompaniment with blue notes. Measure 165 includes a red '7' marking.

170

174

178

182

186

190

194

198

202

201

Measures 201-204. The system consists of a grand staff with a treble and bass clef, and a separate orange staff below the bass staff. The treble staff has a purple highlight over measures 201-202. The bass staff has a blue highlight over measures 201-202. The orange staff has a blue highlight over measures 201-202.

205

Measures 205-207. The system consists of a grand staff with a treble and bass clef, and a separate orange staff below the bass staff. The treble staff has a green highlight over measures 205-206. The bass staff has a blue highlight over measures 205-207. The orange staff has a blue highlight over measures 205-207.

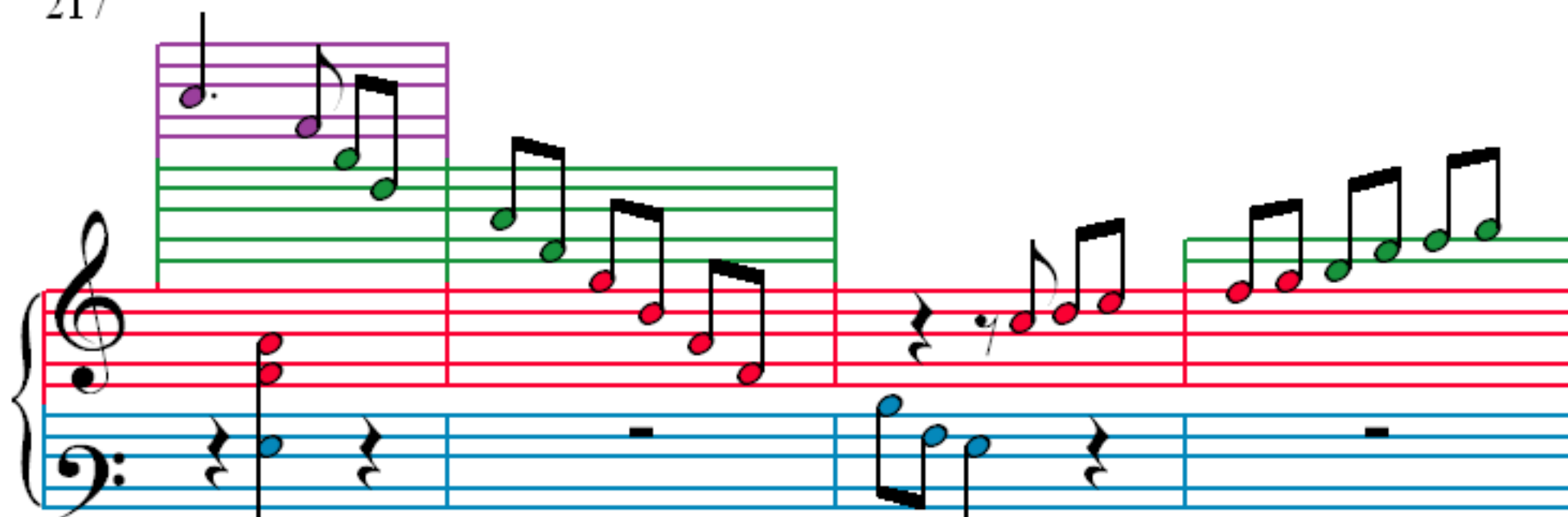
208

Measures 208-210. The system consists of a grand staff with a treble and bass clef, and a separate orange staff below the bass staff. The treble staff has a green highlight over measures 208-210. The bass staff has a blue highlight over measures 208-210. The orange staff has a blue highlight over measures 208-210.

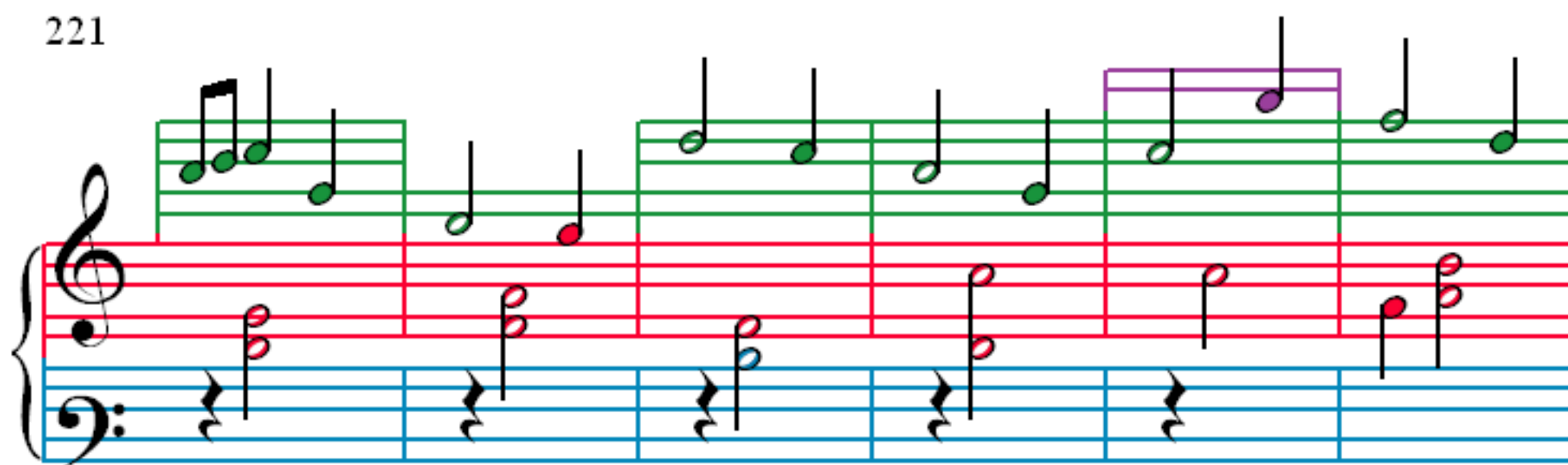
211

Measures 211-214. The system consists of a grand staff with a treble and bass clef, and a separate orange staff below the bass staff. The treble staff has a green highlight over measures 211-214. The bass staff has a blue highlight over measures 211-214. The orange staff has a blue highlight over measures 211-214.

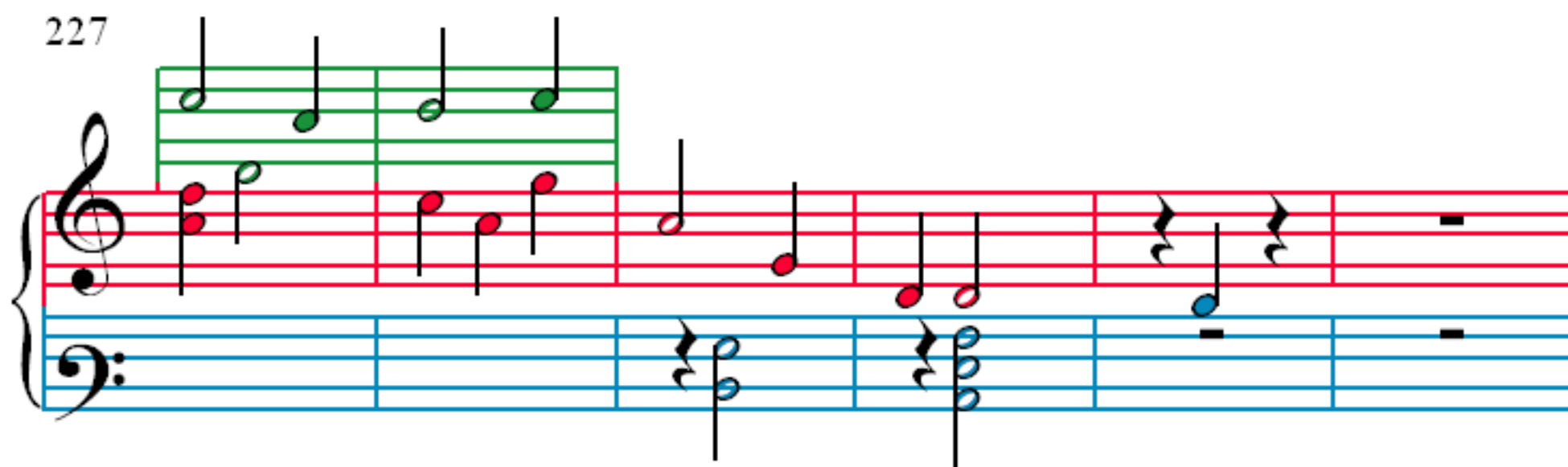
217



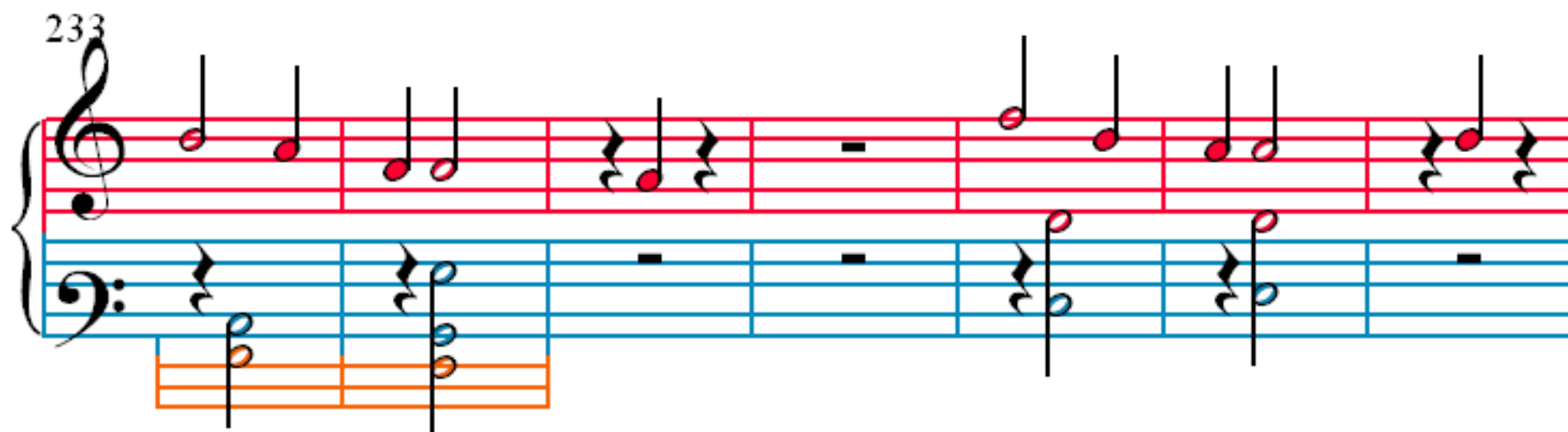
221



227



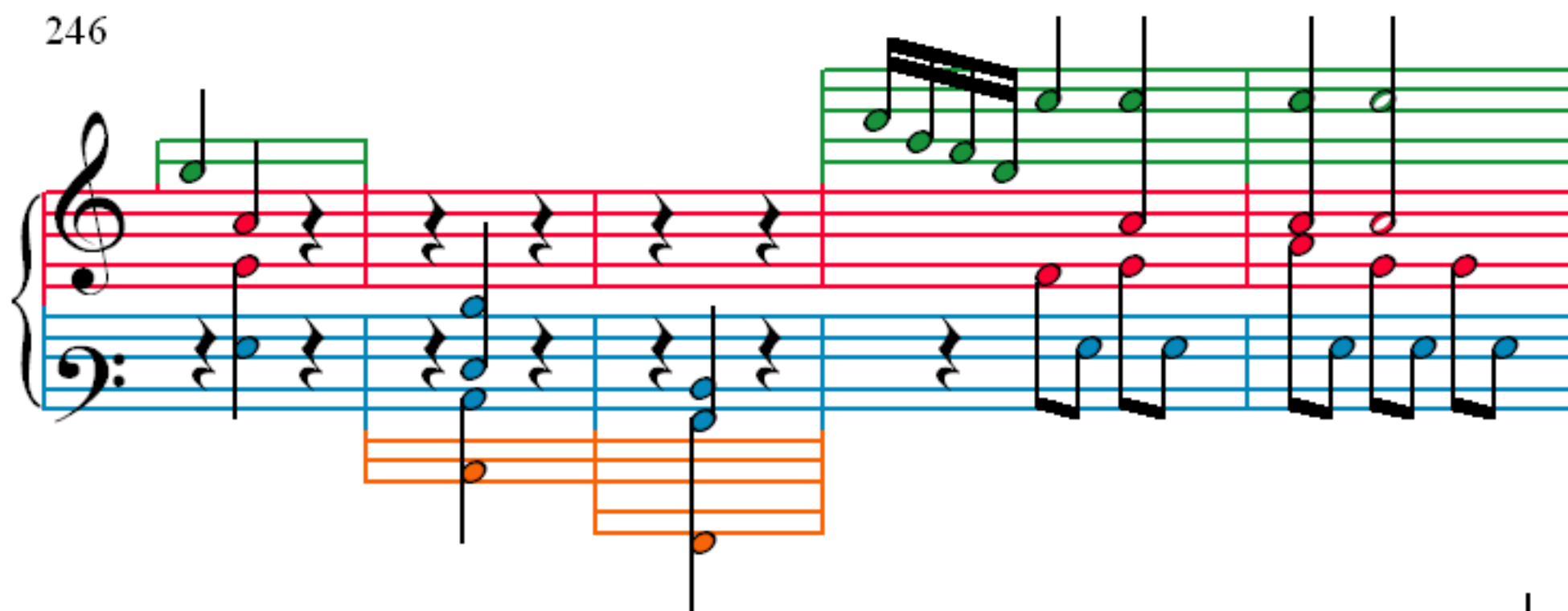
233



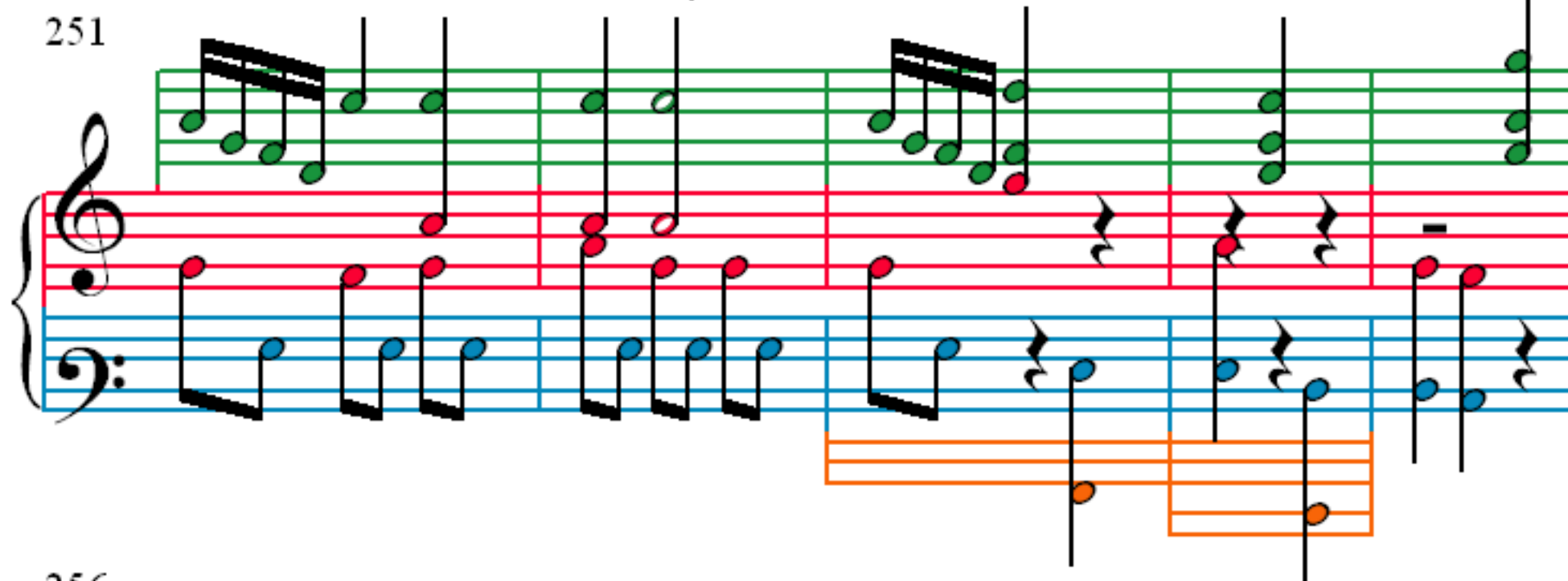
240



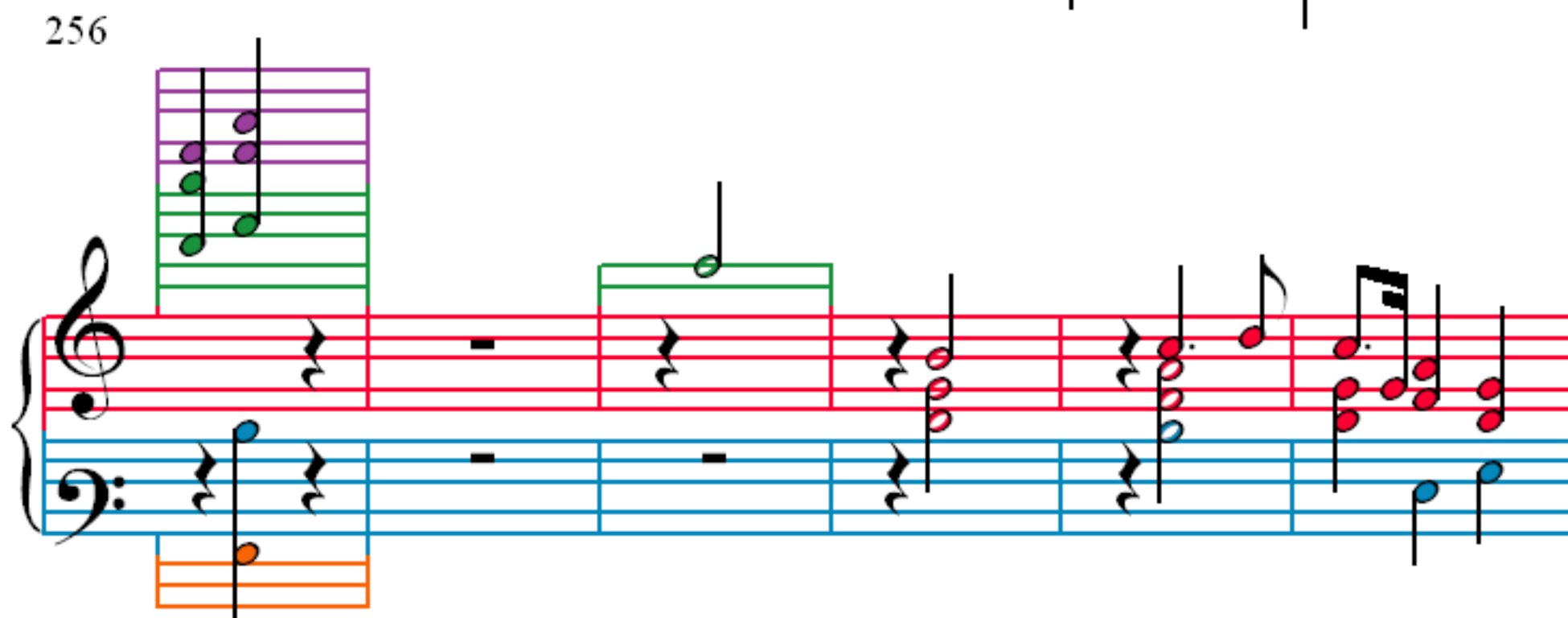
246



251



256





262

Measures 262-265. The system consists of a grand staff with a treble and bass clef. The treble staff has a green staff line above it. The bass staff has a blue staff line below it. The music is written in a key with one flat. The notes are colored: green for the treble staff, red for the upper voice of the grand staff, and blue for the lower voice. There are some blacked-out notes in measures 262 and 265. An orange staff line is visible below the bass staff in measure 262.

266

Measures 266-269. The system continues with the same grand staff and color coding. The treble staff has a green staff line above it. The bass staff has a blue staff line below it. The music is written in a key with one flat. The notes are colored: green for the treble staff, red for the upper voice of the grand staff, and blue for the lower voice. There are some blacked-out notes in measures 266 and 269. An orange staff line is visible below the bass staff in measures 266 and 269.

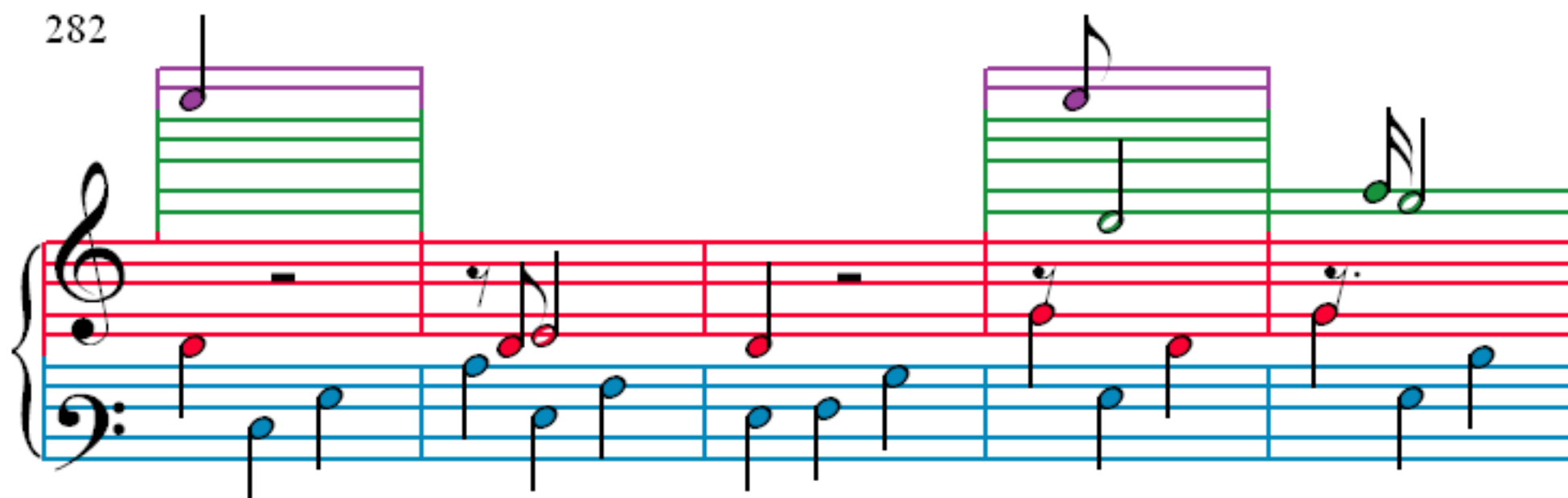
270

Measures 270-275. The system continues with the same grand staff and color coding. The treble staff has a green staff line above it. The bass staff has a blue staff line below it. The music is written in a key with one flat. The notes are colored: green for the treble staff, red for the upper voice of the grand staff, and blue for the lower voice. There are some blacked-out notes in measures 270 and 275. An orange staff line is visible below the bass staff in measures 270 and 275.

276

Measures 276-281. The system continues with the same grand staff and color coding. The treble staff has a green staff line above it. The bass staff has a blue staff line below it. The music is written in a key with one flat. The notes are colored: green for the treble staff, red for the upper voice of the grand staff, and blue for the lower voice. There are some blacked-out notes in measures 276 and 281. A purple staff line is visible above the treble staff in measure 281.

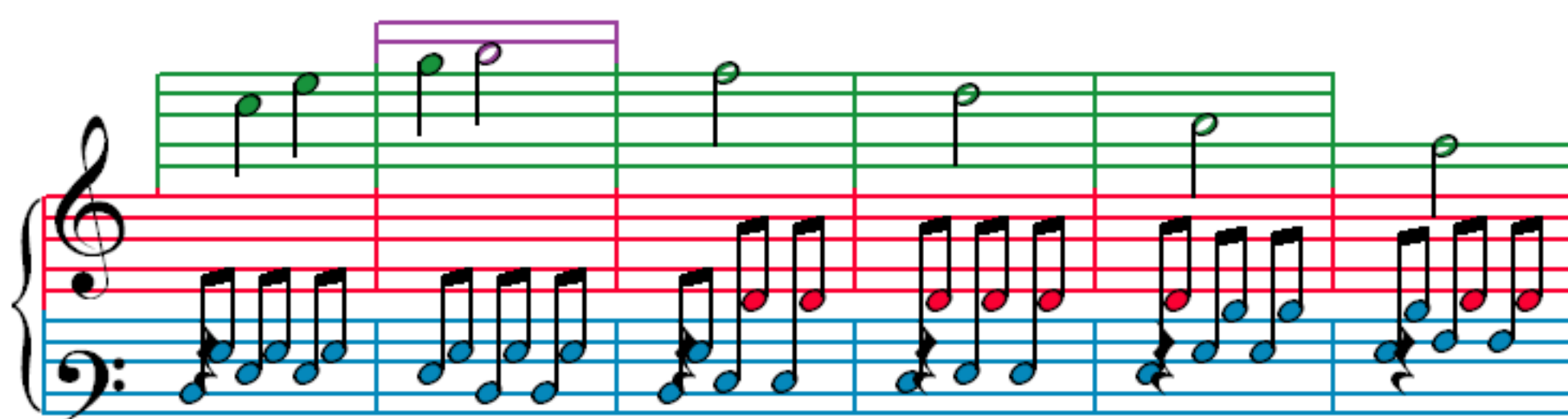
282



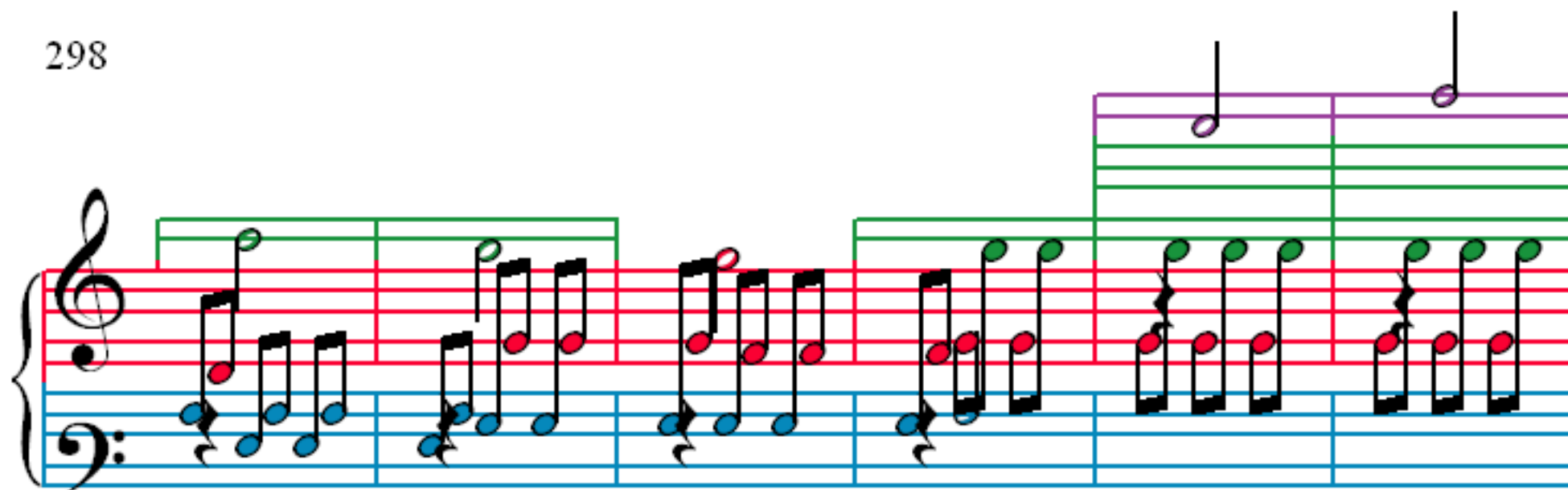
287



292



298



304

308

312

316

320