

# Das Lied der Trennung

W. A. Mozart (1756–1791)

This image displays the first ten measures of a musical score for 'Das Lied der Trennung' by Wolfgang Amadeus Mozart. The score is written for piano and features a treble and bass staff joined by a brace. The key signature is one flat (B-flat major or D minor), and the time signature is 2/4. The notation includes various musical symbols such as notes, rests, and accidentals. The notes are color-coded: red for the melody, blue for the bass line, and orange for the piano accompaniment. The score is divided into four systems, with measure numbers 1, 4, 7, and 10 indicated at the beginning of each system. The first system (measures 1-3) shows a melody in the treble staff and a bass line in the bass staff. The second system (measures 4-6) continues the melody and bass line. The third system (measures 7-9) shows a more complex texture with multiple voices in the treble staff and a bass line. The fourth system (measures 10-12) concludes the excerpt with a final chord in the treble staff and a bass line. The score is presented in a clear, legible format with a white background and black notation.

13

Measures 13-15 of the piece. Measure 13 features a treble staff with a quarter note G4 and a half note A4, and a bass staff with a quarter note G2 and a half note A2. Measure 14 continues with a quarter note B4 and a half note C5 in the treble, and a quarter note B1 and a half note C2 in the bass. Measure 15 shows a quarter note D5 and a half note E5 in the treble, and a quarter note D2 and a half note E2 in the bass. The notation includes various accidentals and ties.

16

Measures 16-18 of the piece. Measure 16 features a treble staff with a quarter note F#4 and a half note G4, and a bass staff with a quarter note F#2 and a half note G2. Measure 17 continues with a quarter note A4 and a half note B4 in the treble, and a quarter note A2 and a half note B2 in the bass. Measure 18 shows a quarter note C5 and a half note D5 in the treble, and a quarter note C2 and a half note D2 in the bass. The notation includes various accidentals and ties.

19

Measures 19-21 of the piece. Measure 19 features a treble staff with a quarter note E4 and a half note F4, and a bass staff with a quarter note E2 and a half note F2. Measure 20 continues with a quarter note G4 and a half note A4 in the treble, and a quarter note G2 and a half note A2 in the bass. Measure 21 shows a quarter note B4 and a half note C5 in the treble, and a quarter note B2 and a half note C3 in the bass. The notation includes various accidentals and ties.

22

Measures 22-24 of the piece. Measure 22 features a treble staff with a quarter note D4 and a half note E4, and a bass staff with a quarter note D2 and a half note E2. Measure 23 continues with a quarter note F4 and a half note G4 in the treble, and a quarter note F2 and a half note G2 in the bass. Measure 24 shows a quarter note A4 and a half note B4 in the treble, and a quarter note A2 and a half note B2 in the bass. The notation includes various accidentals and ties.

25

Measures 25-27. Treble clef: eighth notes, slurs. Bass clef: quarter notes, slurs. Third staff: orange and pink notes, slurs.

28

Measures 28-30. Treble clef: eighth notes, slurs. Bass clef: quarter notes, slurs. Third staff: orange and pink notes, slurs.

31

Measures 31-33. Treble clef: eighth notes, slurs. Bass clef: quarter notes, slurs. Third staff: orange and pink notes, slurs.

34

Measures 34-36. Treble clef: eighth notes, slurs. Bass clef: quarter notes, slurs. Third staff: orange and pink notes, slurs.

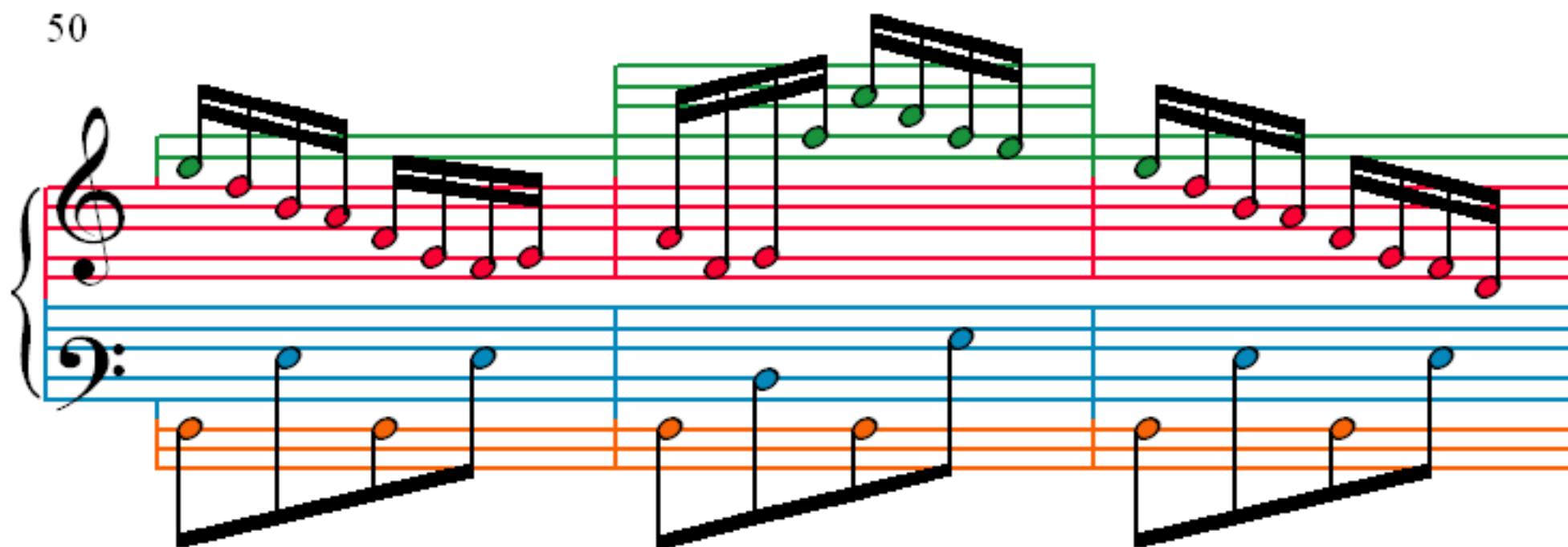
37

40

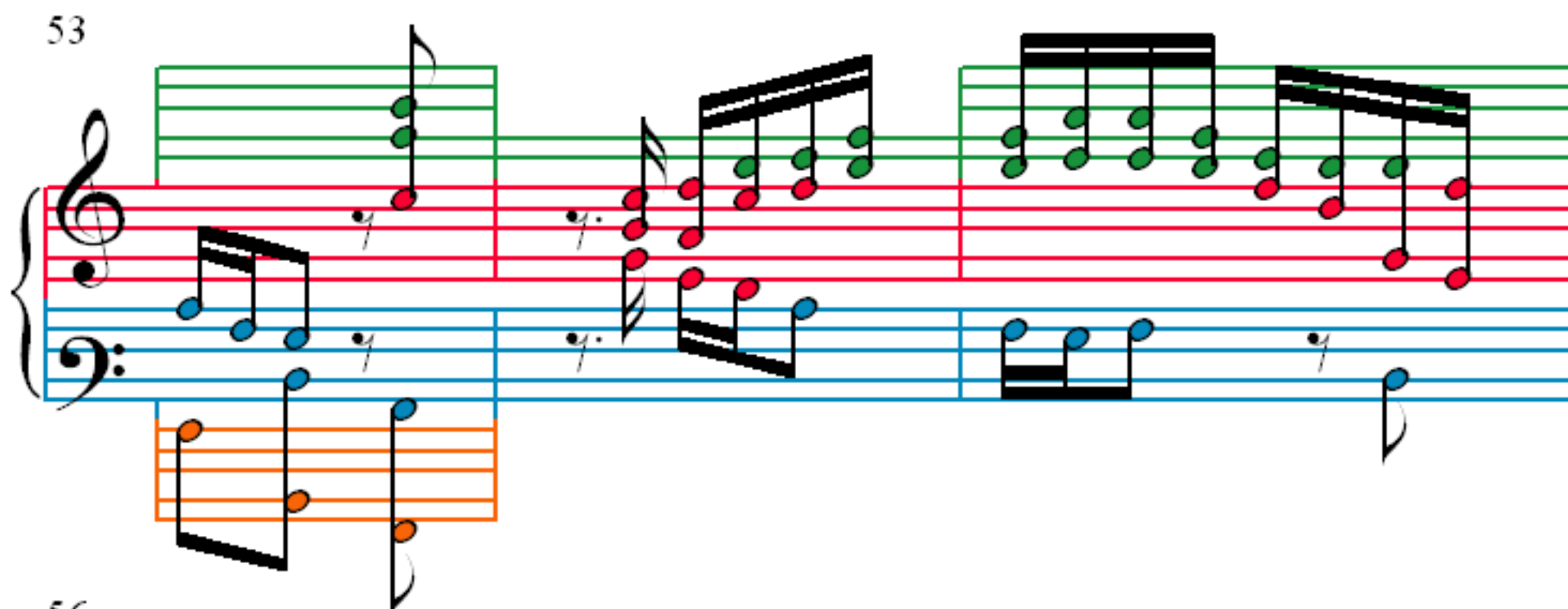
43

46

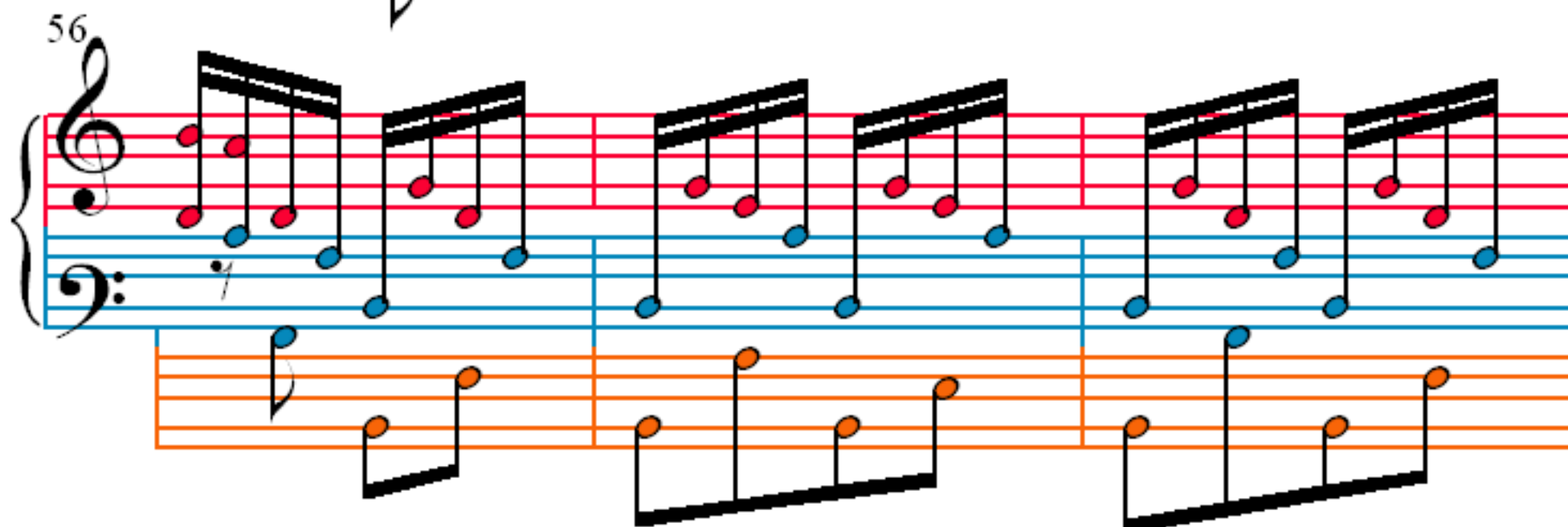
50



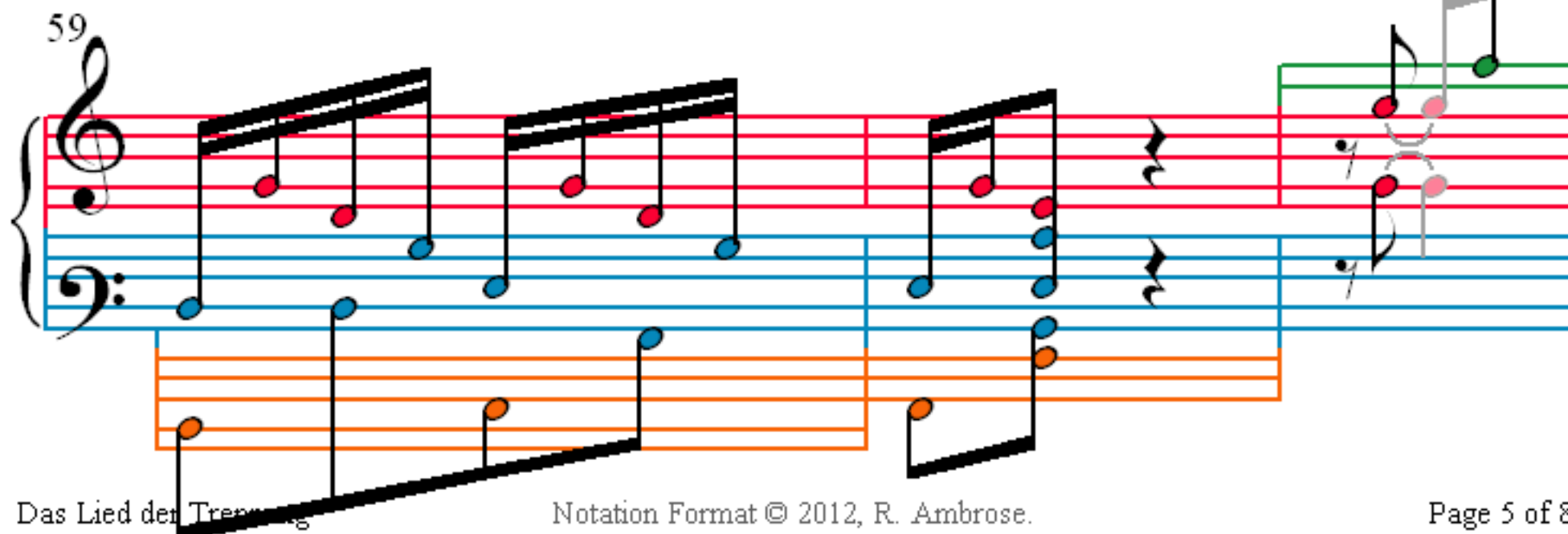
53



56



59



62

Measures 62-65. Treble clef has red notes, bass clef has blue notes. Measures 63-64 have green staves above the treble clef. Measure 65 has an orange staff below the bass clef.

66

Measures 66-68. Treble clef has red notes, bass clef has blue notes. Measure 68 has an orange staff below the bass clef.

69

Measures 69-72. Treble clef has red notes, bass clef has blue notes. Measures 70-71 have green staves above the treble clef. Measure 72 has an orange staff below the bass clef.

73

Measures 73-76. Treble clef has red notes, bass clef has blue notes. Measure 73 has a green staff above the treble clef. Measure 76 has an orange staff below the bass clef.



76

Measures 76-78. Treble clef: eighth-note chords. Bass clef: eighth-note accompaniment. A third staff below shows a single-note bass line.

79

Measures 79-81. Treble clef: eighth-note chords. Bass clef: eighth-note accompaniment. A third staff below shows a single-note bass line with some ties.

82

Measures 82-85. Treble clef: chords with some green highlights. Bass clef: eighth-note accompaniment. A third staff below shows a single-note bass line.

86

Measures 86-89. Treble clef: chords with some green highlights. Bass clef: eighth-note accompaniment. A third staff below shows a single-note bass line.

90

93

96

100