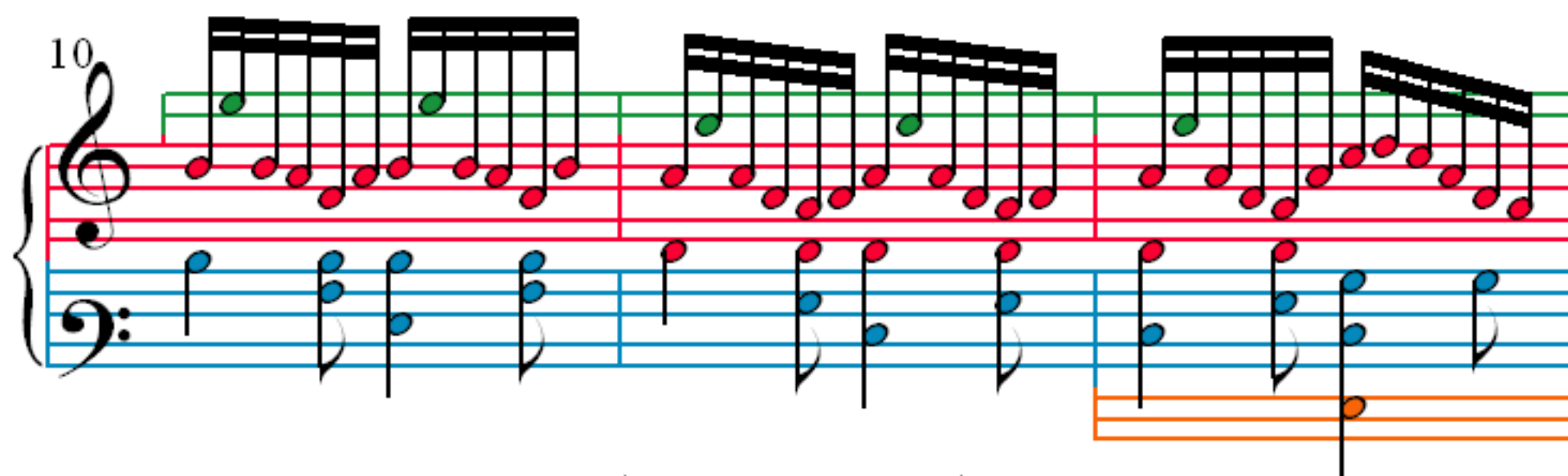
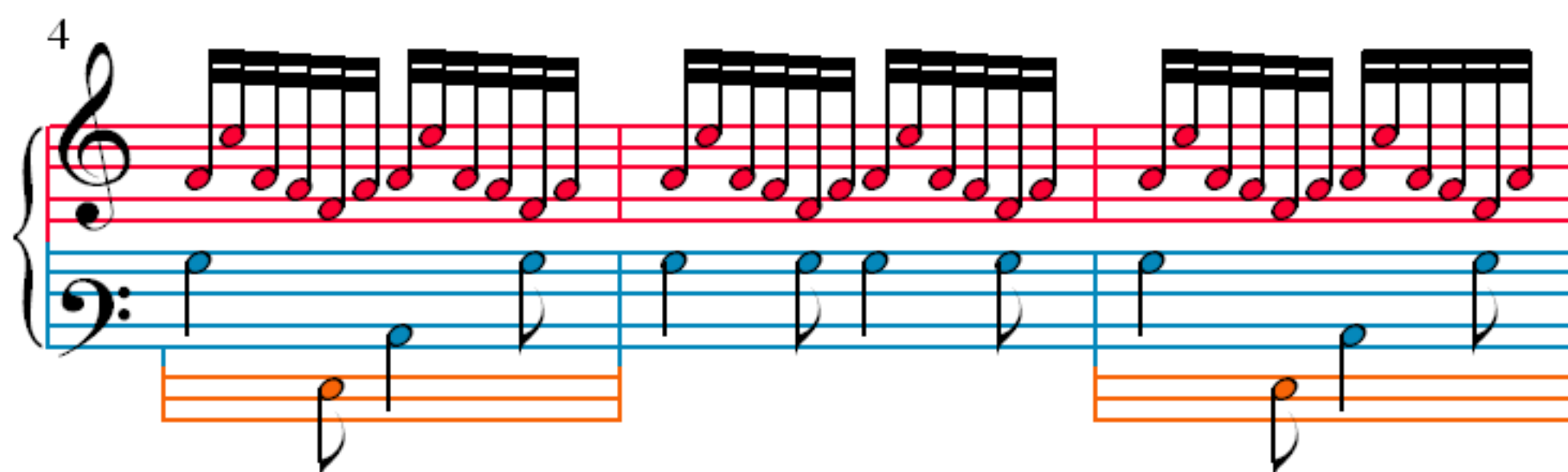
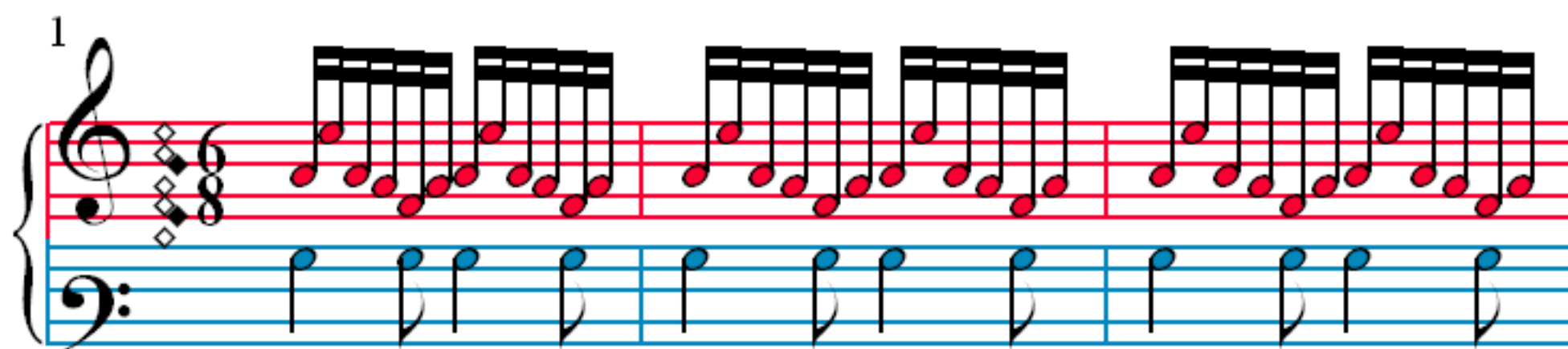
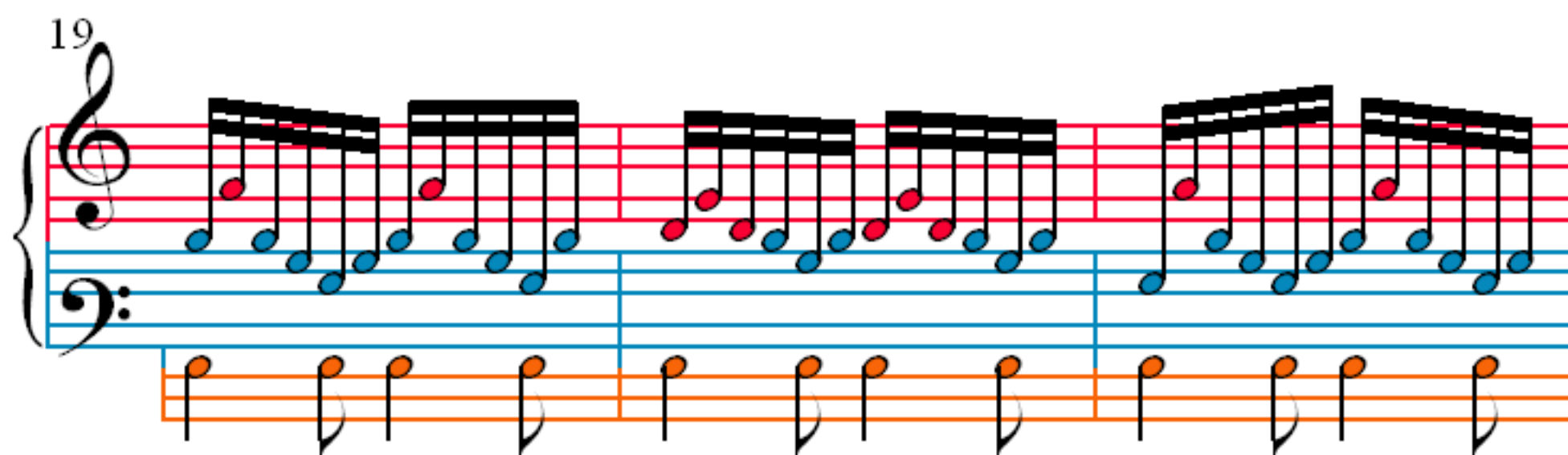
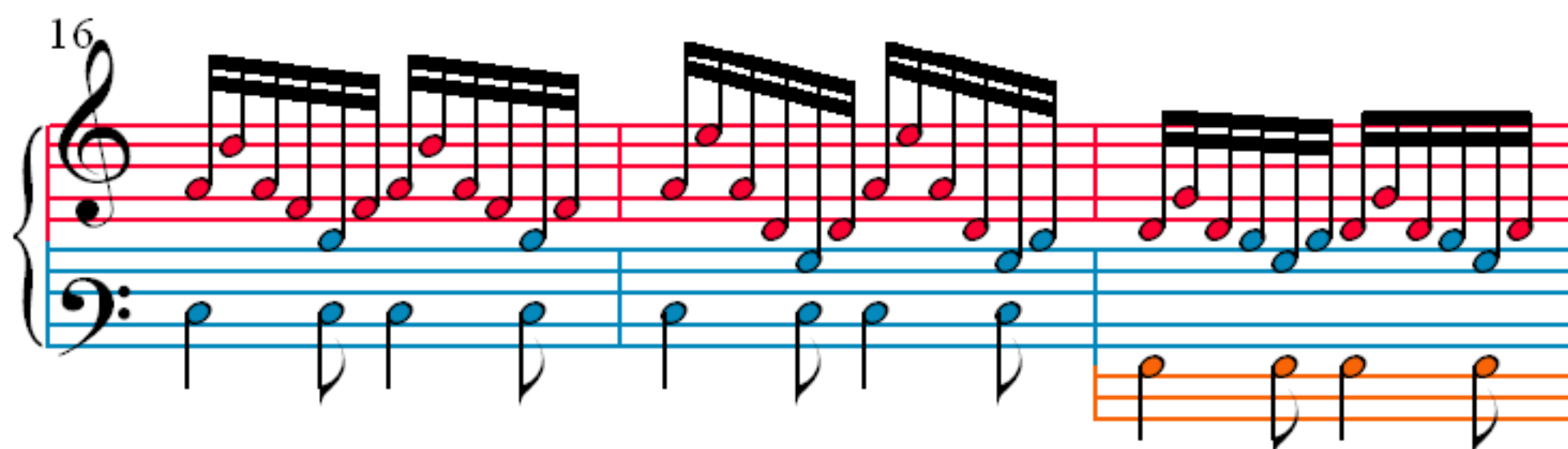
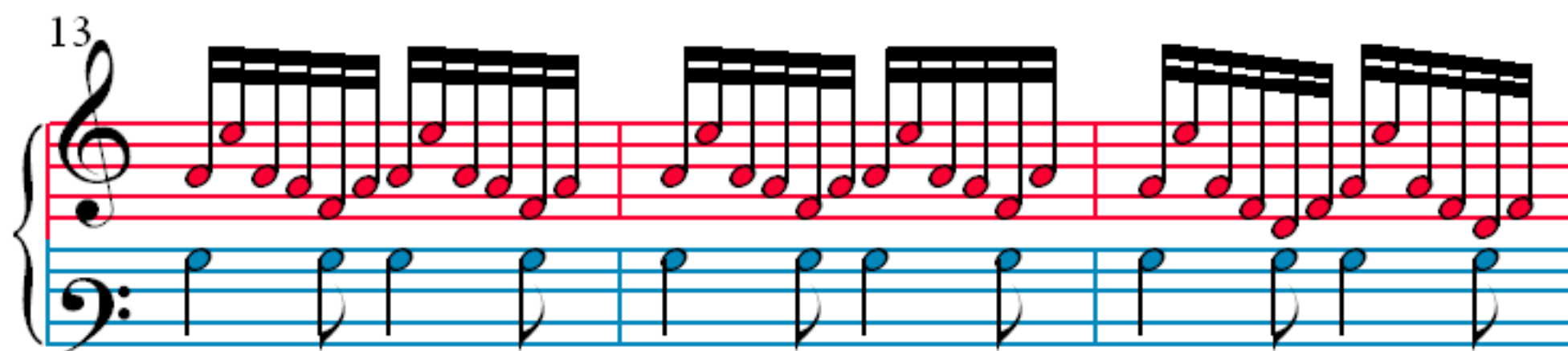


Gretchen am Spinnrade

F. Schubert (1797–1828)





25

28

31

34

37

Measures 37-39: Treble clef staff features a green line and red lines. The bass clef staff has blue lines. The music consists of eighth notes and sixteenth notes.

40

Measures 40-42: Treble clef staff features a green line and red lines. The bass clef staff has blue lines. The music consists of eighth notes and sixteenth notes. An orange box highlights the bass clef staff in measure 41.

43

Measures 43-45: Treble clef staff features a green line and red lines. The bass clef staff has blue lines. The music consists of eighth notes and sixteenth notes.

46

Measures 46-48: Treble clef staff features a green line and red lines. The bass clef staff has blue lines. The music consists of eighth notes and sixteenth notes.

49

52

55

58

61

64

67

70

73

Measures 73-75. Treble clef staff: red line, sixteenth-note runs. Bass clef staff: blue line, eighth-note chords. An orange line is present below the bass staff in the final measure.

76

Measures 76-78. Treble clef staff: red line, sixteenth-note runs. Bass clef staff: blue line, eighth-note chords. A green line is present above the treble staff in the final measure.

79

Measures 79-81. Treble clef staff: red line, sixteenth-note runs. Bass clef staff: blue line, eighth-note chords. A green line is present above the treble staff in the first measure.

82

Measures 82-84. Treble clef staff: red line, sixteenth-note runs. Bass clef staff: blue line, eighth-note chords. A green line is present above the treble staff in the first measure. An orange line is present below the bass staff in the final measure.

85

Measures 85-87. Treble clef: Sixteenth-note runs with green accents on measures 85, 86, and 87. Bass clef: Chords and a low note on measure 85.

88

Measures 88-90. Treble clef: Sixteenth-note runs with green accents on measures 88, 89, and 90. Bass clef: Chords and a low note on measure 88.

91

Measures 91-93. Treble clef: Sixteenth-note runs with green accents on measures 91, 92, and 93. Bass clef: Chords and a low note on measure 91.

94

Measures 94-96. Treble clef: Sixteenth-note runs with green accents on measures 94, 95, and 96. Bass clef: Chords and a low note on measure 94.

97

Measures 97-99: Treble staff features eighth-note patterns. Bass staff features quarter notes. A green line is present in the treble staff.

100

Measures 100-102: Treble staff features eighth-note patterns. Bass staff features quarter notes. A green line is present in the treble staff.

103

Measures 103-105: Treble staff features eighth-note patterns. Bass staff features quarter notes.

106

Measures 106-108: Treble staff features eighth-note patterns. Bass staff features quarter notes.

109

Measures 109-111: The right hand plays a continuous eighth-note pattern. The left hand plays a steady eighth-note accompaniment. An orange line indicates a pedal point in the bass register.

112

Measures 112-114: The right hand continues the eighth-note pattern. The left hand has a brief rest in measure 112 before resuming the eighth-note accompaniment. An orange line indicates a pedal point in the bass register.

115

Measures 115-117: The right hand continues the eighth-note pattern. The left hand plays a steady eighth-note accompaniment. An orange line indicates a pedal point in the bass register.

118

Measures 118-120: The right hand continues the eighth-note pattern. The left hand plays a steady eighth-note accompaniment. An orange line indicates a pedal point in the bass register.