

Im Frühling

F. Schubert (1797–1828)

The image displays the first 13 measures of the piano introduction to Franz Schubert's 'Im Frühling' (D. 157). The score is written for piano in 4/4 time, featuring a treble and bass staff joined by a brace. The music is characterized by a simple, folk-like melody in the treble and a steady, rhythmic accompaniment in the bass. The notes are color-coded: red for the melody, blue for the bass line, and orange for the bass line's accompaniment. The first measure is marked with a '1' above the treble staff. The second measure has a '5' above the treble staff. The third measure has a '9' above the treble staff. The fourth measure has a '13' above the treble staff. The score is presented in a clean, modern notation format with a white background and black staff lines.

17

System 1 (measures 17-19) features a treble and bass staff. The treble staff has a green line and a red line. The bass staff has a blue line and an orange line. The music consists of eighth notes and sixteenth notes, with some notes beamed together. The notes are colored green, red, blue, and orange.

20

System 2 (measures 20-22) continues the musical notation. The treble staff has a green line and a red line. The bass staff has a blue line and an orange line. The music consists of eighth notes and sixteenth notes, with some notes beamed together. The notes are colored green, red, blue, and orange.

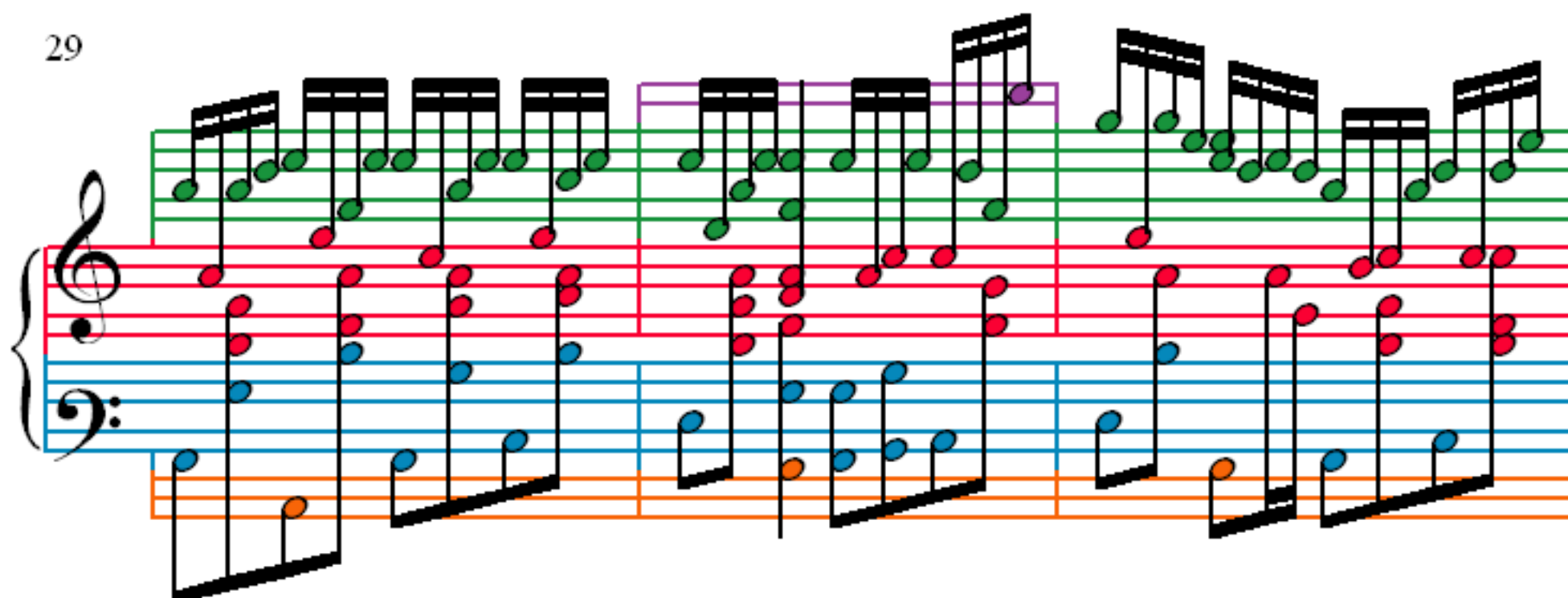
23

System 3 (measures 23-25) continues the musical notation. The treble staff has a green line and a red line. The bass staff has a blue line and an orange line. The music consists of eighth notes and sixteenth notes, with some notes beamed together. The notes are colored green, red, blue, and orange.

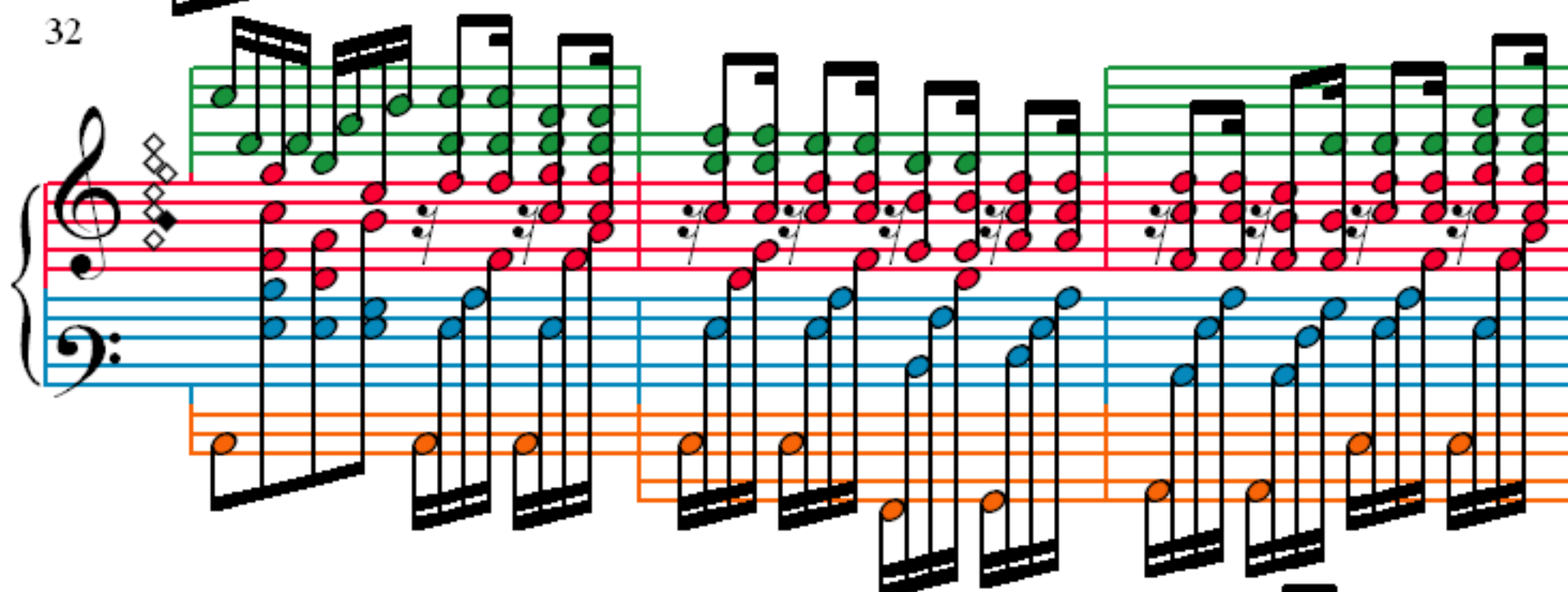
26

System 4 (measures 26-28) continues the musical notation. The treble staff has a green line and a red line. The bass staff has a blue line and an orange line. The music consists of eighth notes and sixteenth notes, with some notes beamed together. The notes are colored green, red, blue, and orange.

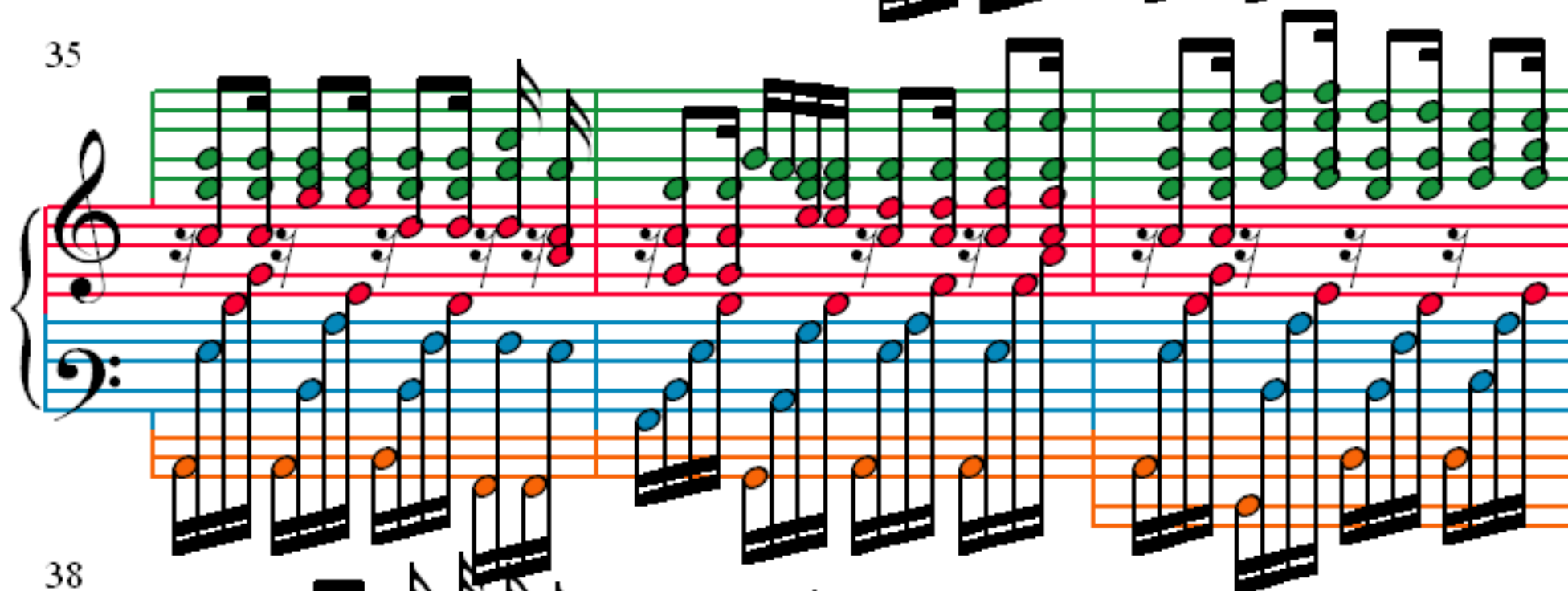
29



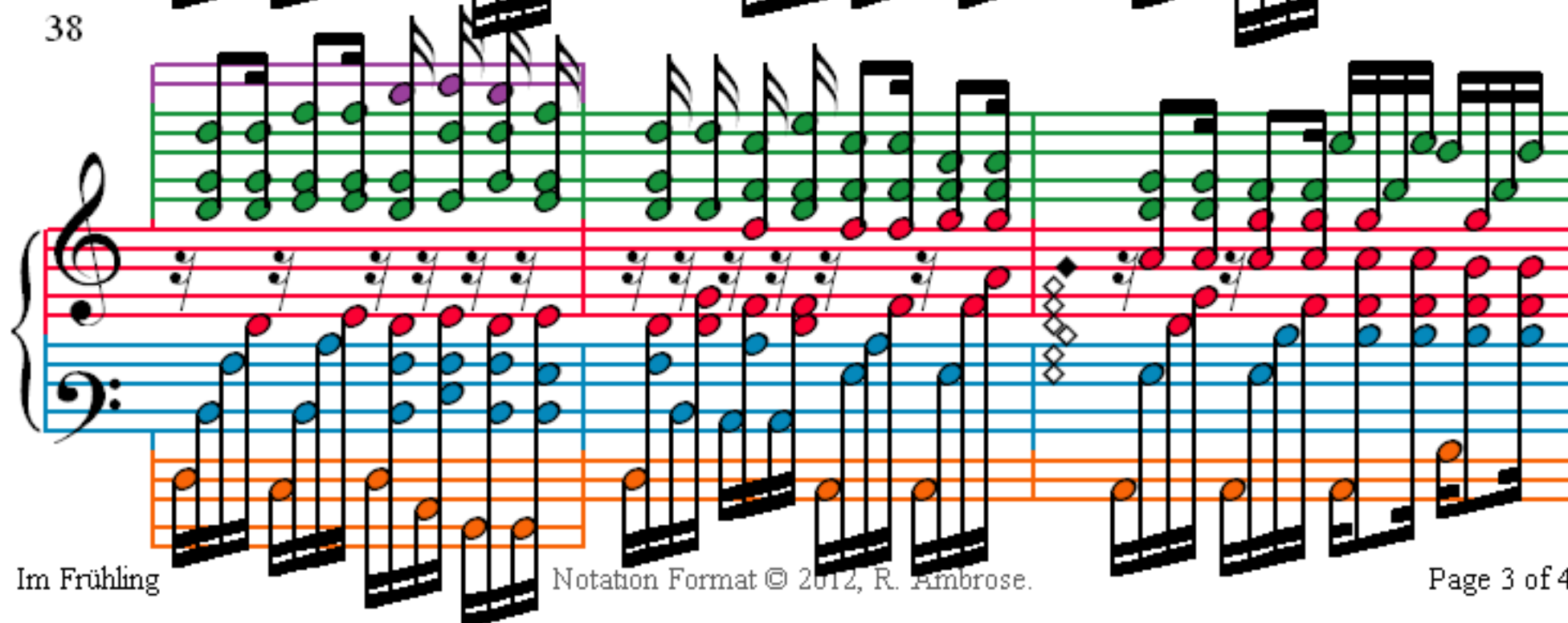
32



35



38



41

43

45

48