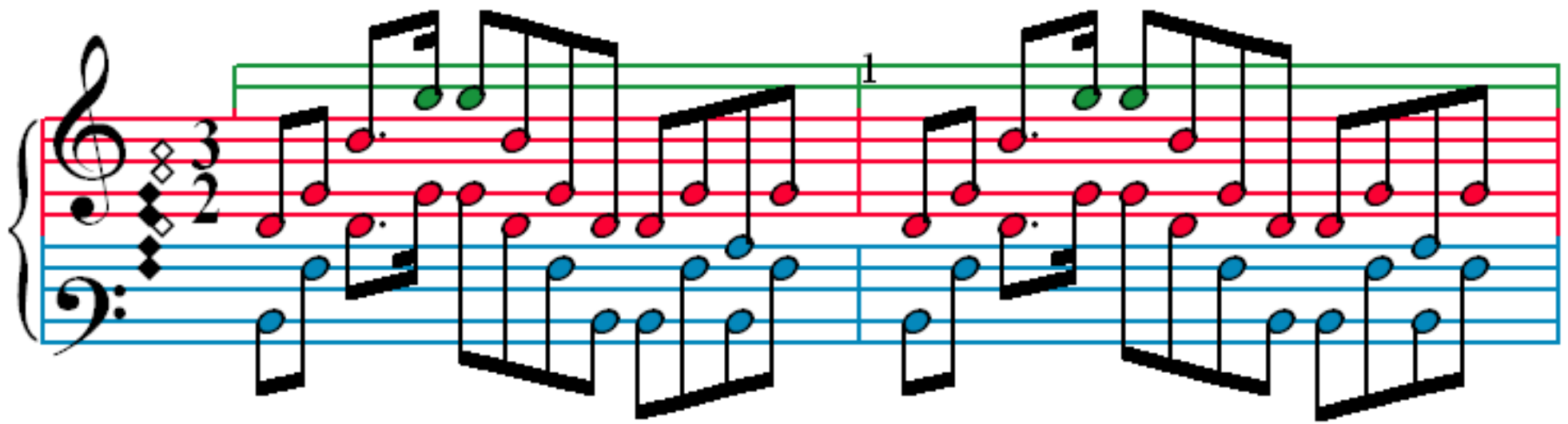
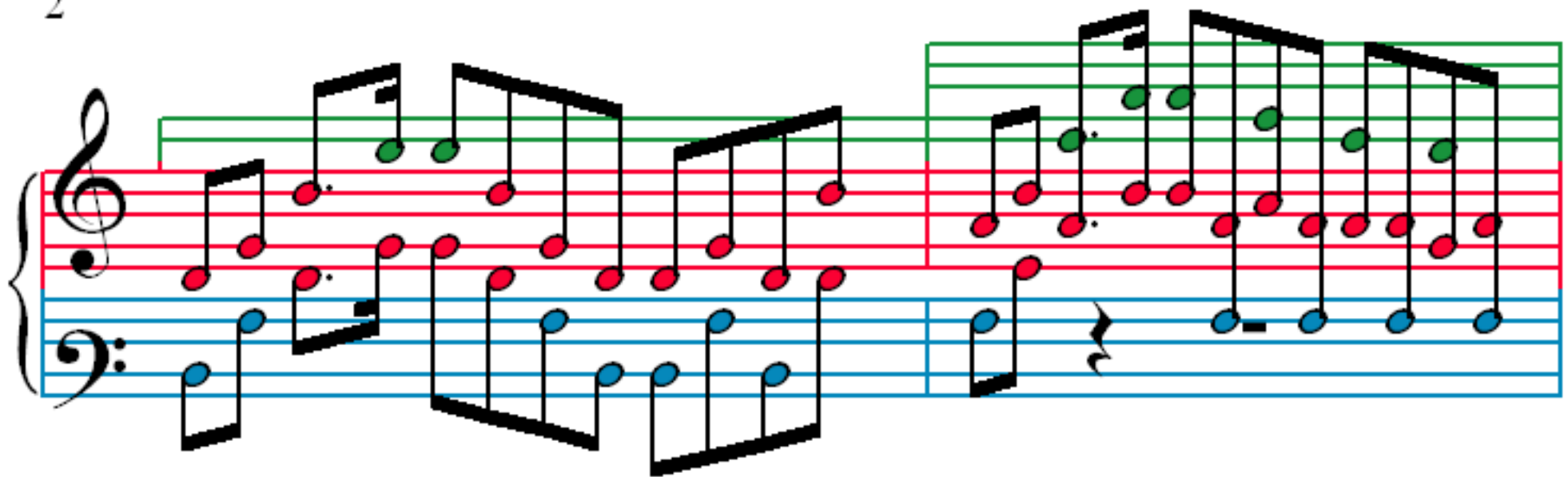


Widmung

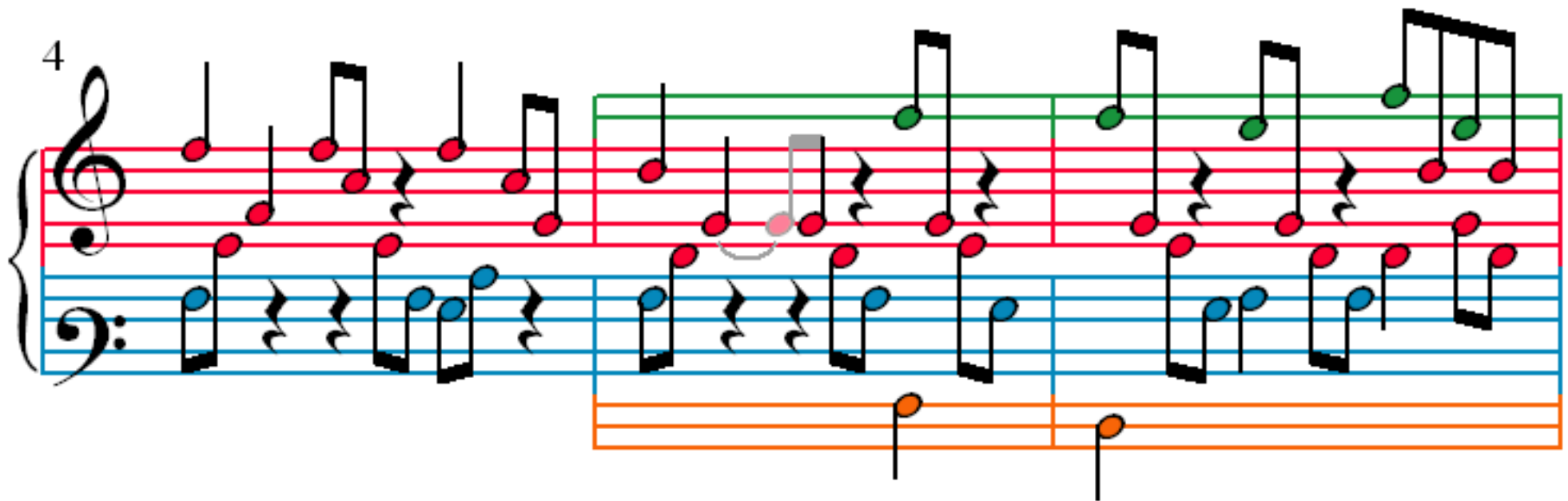
R. Schumann (1810–1856)



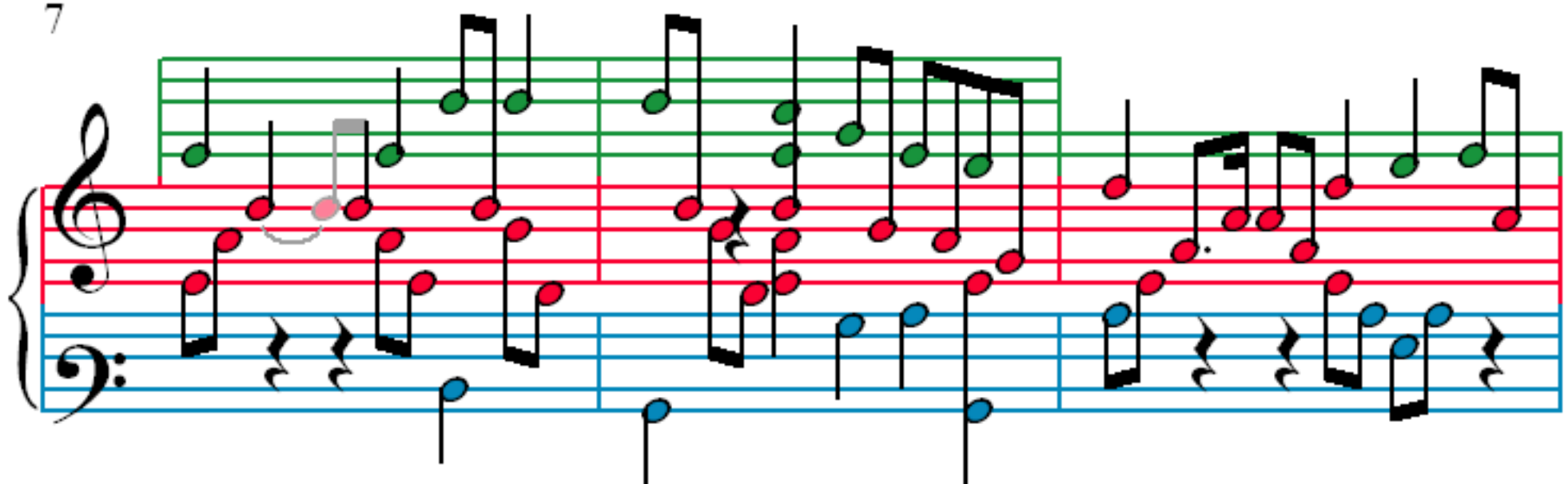
2



4



7



10

Measures 10-12. Treble clef has a green line above the staff. Bass clef has a blue line below the staff. Notes are colored red and blue.

13

Measures 13-15. Treble clef has a green line above the staff. Bass clef has a blue line below the staff. Notes are colored red and blue.

16

Measures 16-18. Treble clef has a green line above the staff. Bass clef has a blue line below the staff. Notes are colored red and blue.

19

Measures 19-21. Treble clef has a green line above the staff. Bass clef has a blue line below the staff. Notes are colored red and blue.

22

25

28

31

34

Measures 34-35. Treble clef has a green line above it. Red notes are in the treble staff, blue notes in the bass staff. An orange staff is below the bass staff.

36

Measures 36-38. Treble clef has a green line above it. Red notes are in the treble staff, blue notes in the bass staff. An orange staff is below the bass staff.

39

Measures 39-40. Treble clef has a green line above it. Red notes are in the treble staff, blue notes in the bass staff.

41

Measures 41-43. Treble clef has a green line above it. Red notes are in the treble staff, blue notes in the bass staff. An orange staff is below the bass staff.