

25. Echos du Théâtre

Album pour la jeunesse

R. Schumann (1810–1856)

1

4

7

10

The image displays the first 12 measures of the piece 'Echos du Théâtre' from Schumann's 'Album pour la jeunesse'. The notation is presented in four systems, each corresponding to a measure number (1, 4, 7, 10) indicated on the left. Each system consists of a grand staff with a treble and bass clef. The music is in 2/4 time, as indicated by the time signature in the first system. The notes are color-coded: green for the right hand (treble clef) and blue for the left hand (bass clef). Red dots are placed on the notes to indicate fingerings. Some notes are circled in grey, likely indicating specific fingering or articulation points. The piece features a simple, rhythmic melody in the right hand and a supporting bass line in the left hand.

13

Measures 13-15. Treble clef: Green notes on a green staff. Bass clef: Blue notes on a blue staff. Red lines connect corresponding notes between the two staves.

16

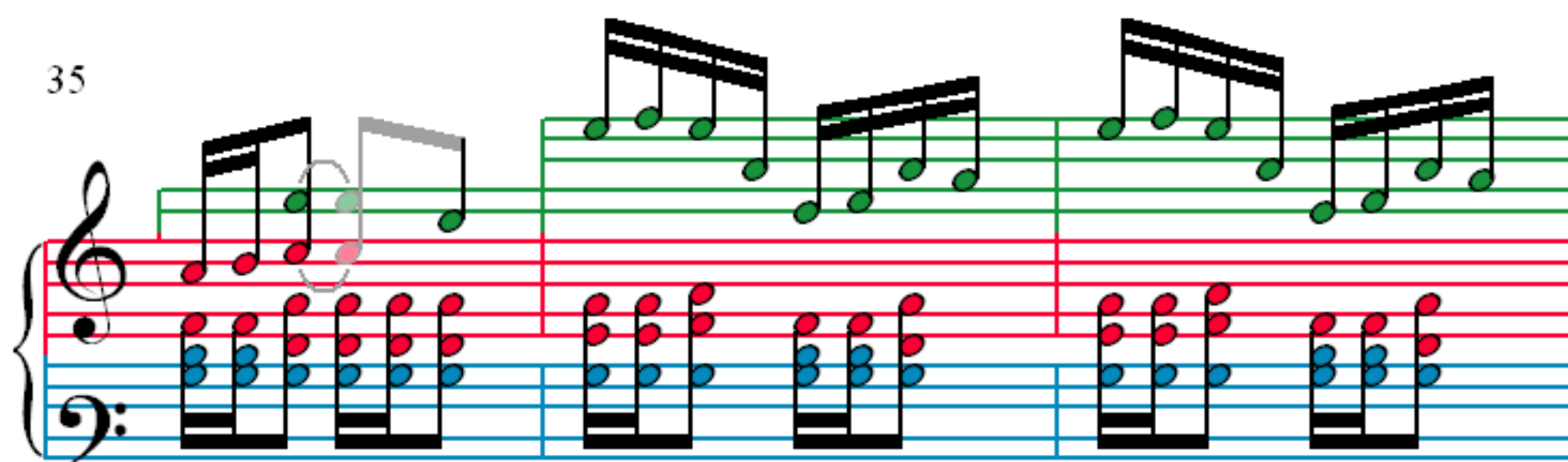
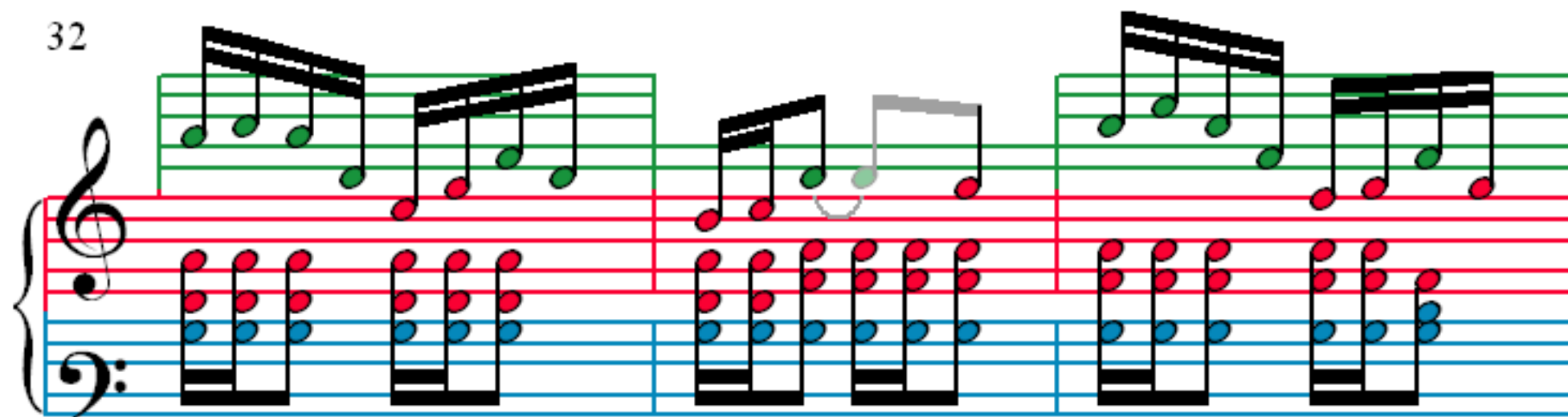
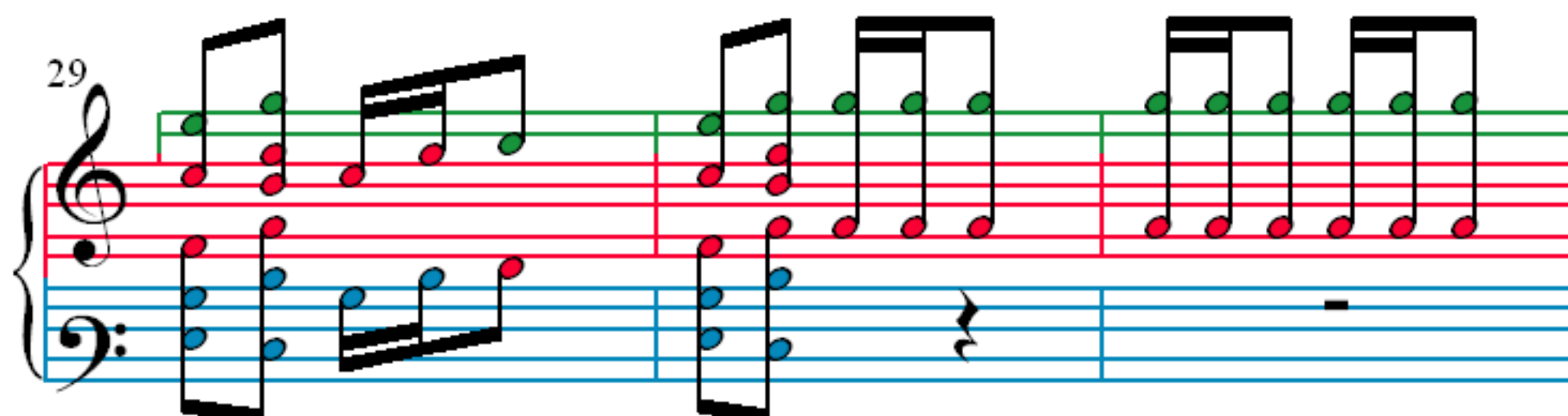
Measures 16-19. Treble clef: Green notes on a green staff. Bass clef: Blue notes on a blue staff. Red lines connect corresponding notes between the two staves. An orange staff is introduced below the bass staff in measure 17.

20

Measures 20-22. Treble clef: Green notes on a green staff. Bass clef: Blue notes on a blue staff. Red lines connect corresponding notes between the two staves. An orange staff is introduced below the bass staff in measure 20.

23

Measures 23-25. Treble clef: Green notes on a green staff. Bass clef: Blue notes on a blue staff. Red lines connect corresponding notes between the two staves. An orange staff is introduced below the bass staff in measure 23.



38

41

45

48

