

# Hands Across the Sea

J. P. Sousa (1854–1932)

1

Measures 1-3 of the piece. The music is in 2/2 time, indicated by the '2' over the bass staff. The key signature has one sharp (F#), indicated by the sharp sign on the F line of the treble staff. The notation is color-coded: the treble staff has green notes, the middle red staff has red notes, the blue bass staff has blue notes, and an additional orange staff at the bottom has orange notes. Measure 1 features a treble staff with a descending eighth-note scale and a bass staff with a descending eighth-note scale. Measure 2 has chords in the treble and bass staves. Measure 3 continues the chordal texture.

4

Measures 4-6. Measure 4 shows chords in the treble and bass staves. Measure 5 has a treble staff with a descending eighth-note scale and a bass staff with a descending eighth-note scale. Measure 6 continues the chordal texture.

7

Measures 7-9. Measure 7 has a treble staff with a descending eighth-note scale and a bass staff with a descending eighth-note scale. Measure 8 has a treble staff with a descending eighth-note scale and a bass staff with a descending eighth-note scale. Measure 9 continues the chordal texture.

10

Measures 10-12. Measure 10 has a treble staff with a descending eighth-note scale and a bass staff with a descending eighth-note scale. Measure 11 has a treble staff with a descending eighth-note scale and a bass staff with a descending eighth-note scale. Measure 12 continues the chordal texture.

13

16

19

22

26

Measures 26-29 of the piece. The notation is presented in three systems. Each system consists of three staves: a top staff (purple), a middle staff (green), and a bottom staff (blue). The bottom staff is further divided into two sub-staves (orange and red). The music is written in a treble clef. Measure 26 shows a sequence of notes in the top and middle staves, with a whole note in the bottom staff. Measure 27 continues the sequence. Measure 28 features a whole note in the top staff and a whole note in the bottom staff. Measure 29 shows a whole note in the top staff and a whole note in the bottom staff.

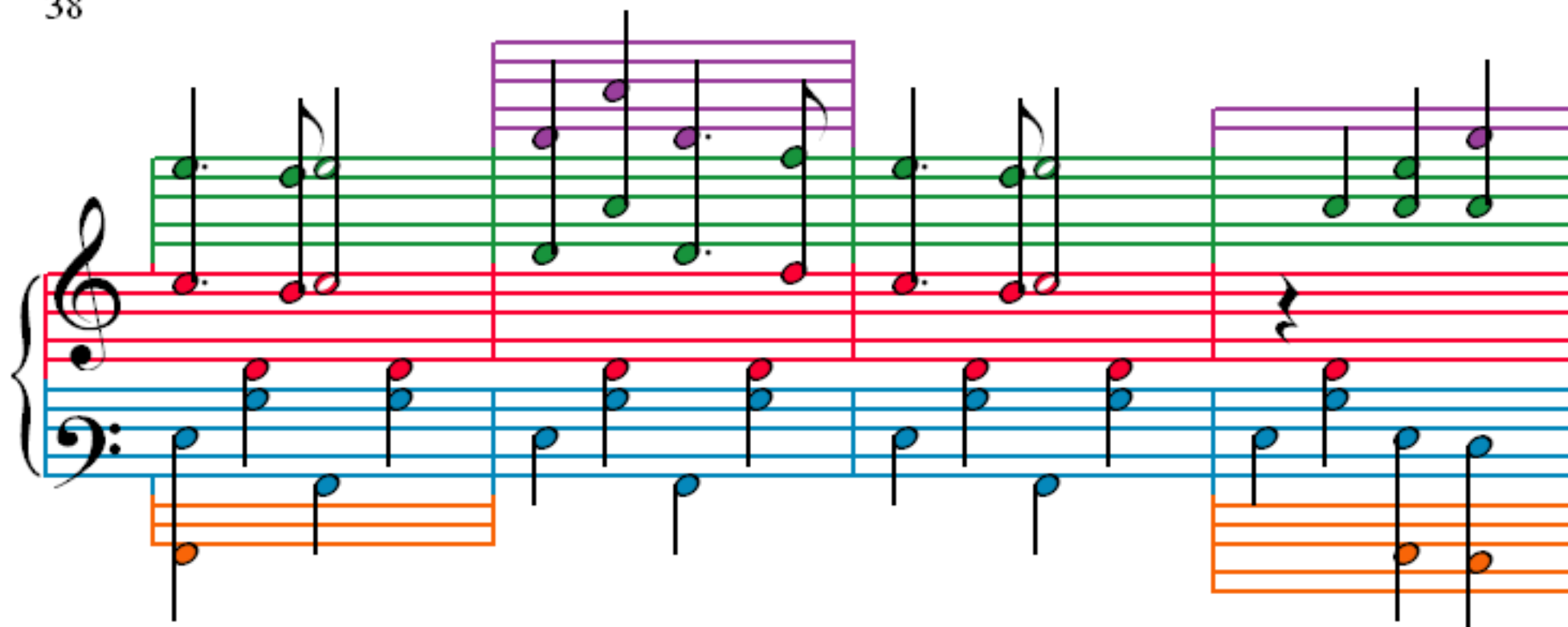
30

Measures 30-33 of the piece. The notation is presented in three systems. Each system consists of three staves: a top staff (purple), a middle staff (green), and a bottom staff (blue). The bottom staff is further divided into two sub-staves (orange and red). The music is written in a treble clef. Measure 30 shows a sequence of notes in the top and middle staves, with a whole note in the bottom staff. Measure 31 continues the sequence. Measure 32 features a whole note in the top staff and a whole note in the bottom staff. Measure 33 shows a whole note in the top staff and a whole note in the bottom staff.

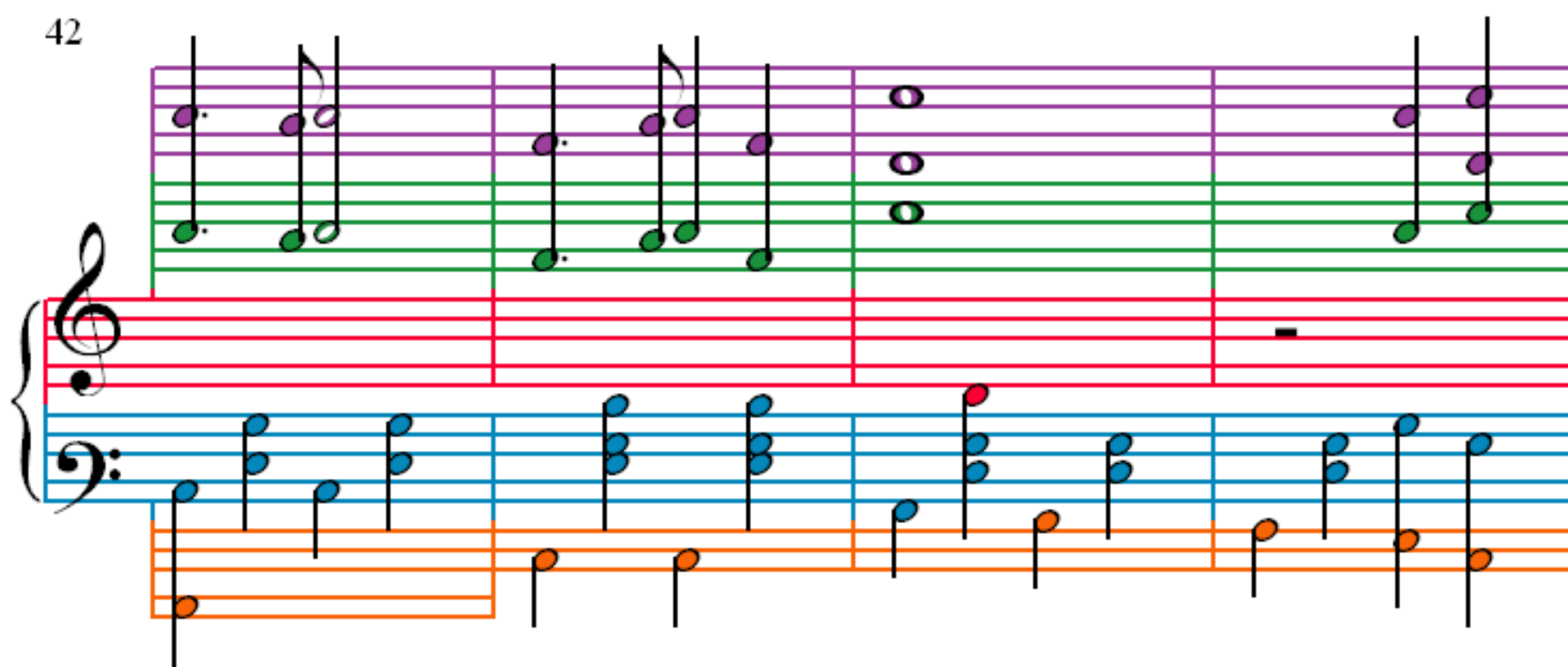
34

Measures 34-37 of the piece. The notation is presented in three systems. Each system consists of three staves: a top staff (purple), a middle staff (green), and a bottom staff (blue). The bottom staff is further divided into two sub-staves (orange and red). The music is written in a treble clef. Measure 34 shows a sequence of notes in the top and middle staves, with a whole note in the bottom staff. Measure 35 continues the sequence. Measure 36 features a whole note in the top staff and a whole note in the bottom staff. Measure 37 shows a whole note in the top staff and a whole note in the bottom staff.

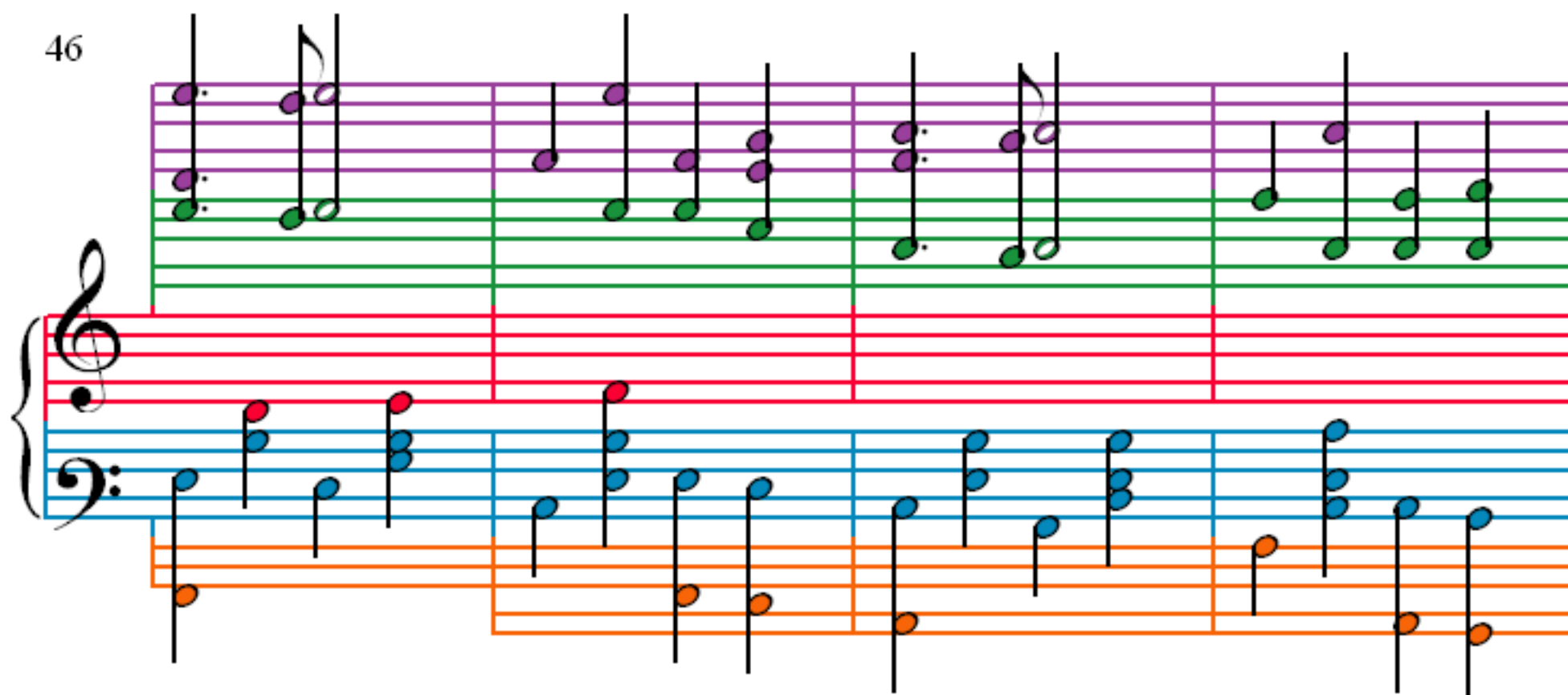
38



42



46



50

Measures 50-53 of the piece. The notation is presented in a system with four staves. The top staff is a treble clef with a purple key signature. The second staff is a red treble clef. The third staff is a blue bass clef. The fourth staff is an orange bass clef. The music consists of eighth and sixteenth notes, with some measures containing beamed sixteenth notes. The notes are colored to match the staff they are on: purple, red, blue, and orange.

54

Measures 54-57 of the piece. The notation is presented in a system with four staves. The top staff is a treble clef with a purple key signature. The second staff is a red treble clef. The third staff is a blue bass clef. The fourth staff is an orange bass clef. The music consists of eighth and sixteenth notes, with some measures containing beamed sixteenth notes. The notes are colored to match the staff they are on: purple, red, blue, and orange.

58

Measures 58-61 of the piece. The notation is presented in a system with four staves. The top staff is a treble clef with a purple key signature. The second staff is a red treble clef. The third staff is a blue bass clef. The fourth staff is an orange bass clef. The music consists of eighth and sixteenth notes, with some measures containing beamed sixteenth notes. The notes are colored to match the staff they are on: purple, red, blue, and orange.

62

Measures 62-65 of the piece. The notation is presented in a system with four staves. The top staff is a treble clef with a purple key signature. The second staff is a red treble clef. The third staff is a blue bass clef. The fourth staff is an orange bass clef. The music consists of eighth and sixteenth notes, with some measures containing beamed sixteenth notes. The notes are colored to match the staff they are on: purple, red, blue, and orange.

66

70

73

76

79

82

85

88

91

94

97

100

103

106

109

112

115

118

121

124

127

130

133

136

139

142

145

148

151

154

157

160

163

166

169

172

175

178

181

184

187

190

193

196

199

202

205

208

211

214

217

220

223

226

229

79

Measures 79-81. Treble clef: Green notes. Bass clef: Blue notes. An orange staff is at the bottom.

82

Measures 82-85. Treble clef: Green notes. Bass clef: Blue notes. An orange staff is at the bottom.

86

Measures 86-88. Treble clef: Green notes. Bass clef: Blue notes. An orange staff is at the bottom.

89

Measures 89-91. Treble clef: Green notes. Bass clef: Blue notes. An orange staff is at the bottom.



92

Handwritten musical notation for measures 92-95. The system consists of three staves: a top green staff, a middle red staff, and a bottom blue staff. The top staff has purple notes on measures 92-93 and 94-95. The middle staff has whole rests on measures 92-95. The bottom staff has blue notes on measures 92-93 and 94-95. The bottom staff is further divided into two sub-staves: an orange staff with orange notes and a pink staff with pink notes.

96

Handwritten musical notation for measures 96-99. The system consists of three staves: a top green staff, a middle red staff, and a bottom blue staff. The top staff has purple notes on measures 96-97 and 98-99. The middle staff has whole rests on measures 96-99. The bottom staff has blue notes on measures 96-97 and 98-99. The bottom staff is further divided into two sub-staves: an orange staff with orange notes and a pink staff with pink notes.

100

Handwritten musical notation for measures 100-103. The system consists of three staves: a top green staff, a middle red staff, and a bottom blue staff. The top staff has purple notes on measures 100-101 and 102-103. The middle staff has red notes on measures 100-103. The bottom staff has blue notes on measures 100-101 and 102-103. The bottom staff is further divided into two sub-staves: an orange staff with orange notes and a pink staff with pink notes.



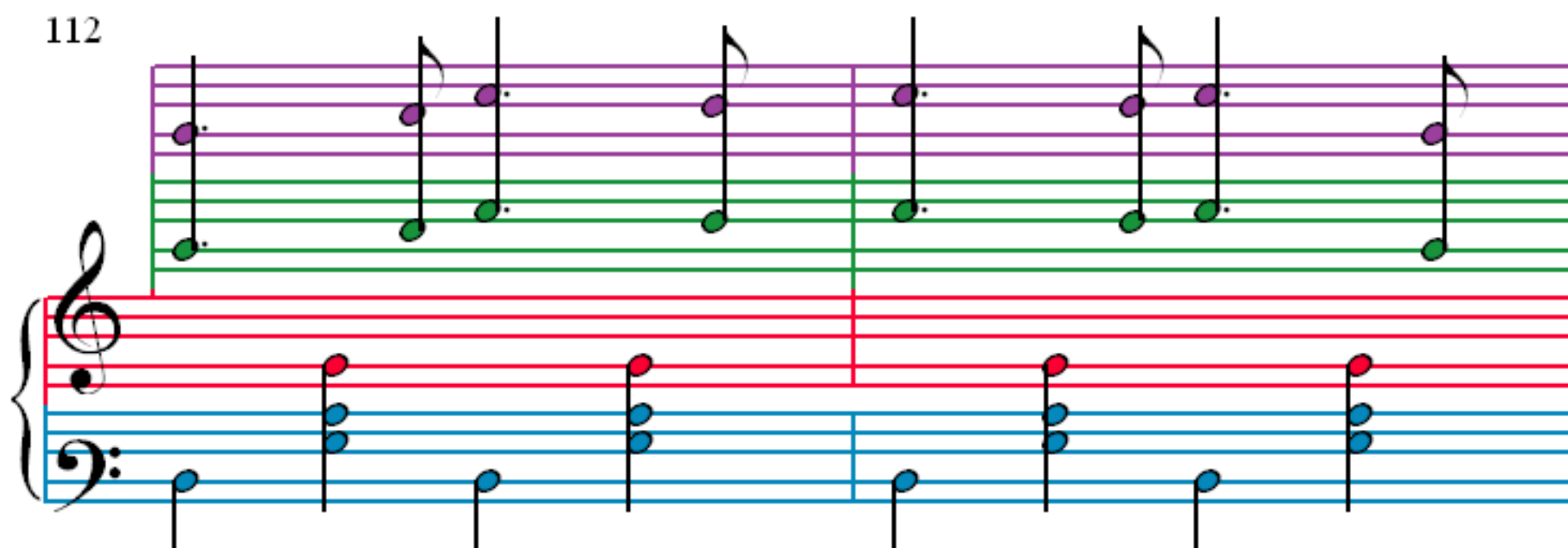
104

106

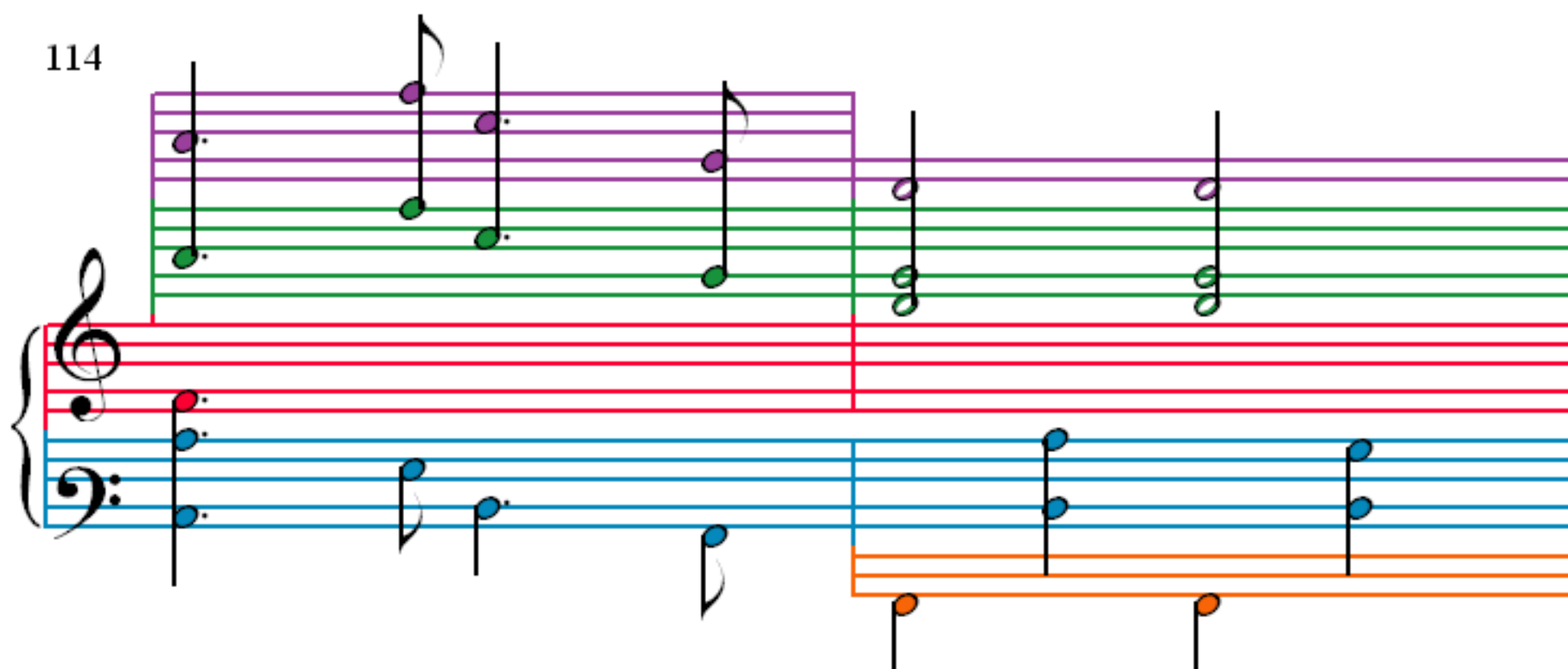
108

110

112



114



116

