

La Traviata - N6 Scena ed aria

G. Verdi (1813–1901)

1

Measure 1 of the scene and aria. The treble clef staff contains a melodic line starting on a green note (G4), moving up to a red note (A4), and then down to a red note (G4). The bass clef staff contains a whole rest. The time signature is 4/4.

2

Measure 2 of the scene and aria. The treble clef staff contains a melodic line starting on a green note (G4), moving up to a red note (A4), and then down to a red note (G4). The bass clef staff contains a whole rest. The time signature is 4/4.

4

Measure 4 of the scene and aria. The treble clef staff contains a melodic line starting on a green note (G4), moving up to a red note (A4), and then down to a red note (G4). The bass clef staff contains a whole rest. The time signature is 4/4.

6

Measure 6 of the scene and aria. The treble clef staff contains a melodic line starting on a green note (G4), moving up to a red note (A4), and then down to a red note (G4). The bass clef staff contains a whole rest. The time signature is 4/4.

8

Measures 8-10 of the score. The system consists of a vocal line (treble clef) and a piano accompaniment (grand staff). The vocal line features a melody with eighth and sixteenth notes, primarily in green and red. The piano accompaniment has a rhythmic pattern of eighth notes in the left hand and chords in the right hand, with notes in blue and red. A purple staff with notes is visible in the upper right corner, likely representing a continuation or a different part of the score.

11

Measures 11-13 of the score. The vocal line continues with a melody in green and red. The piano accompaniment features a rhythmic pattern of eighth notes in the left hand and chords in the right hand, with notes in blue and red. A purple staff with notes is visible in the upper left corner, likely representing a continuation or a different part of the score.

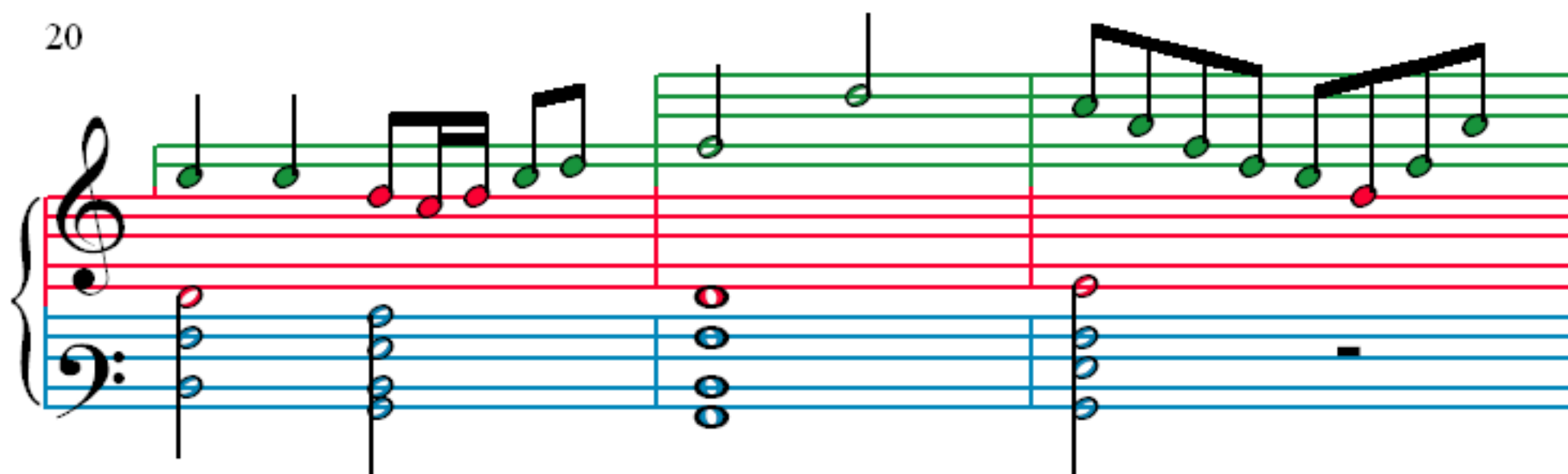
14

Measures 14-16 of the score. The vocal line continues with a melody in green and red. The piano accompaniment features a rhythmic pattern of eighth notes in the left hand and chords in the right hand, with notes in blue and red. A purple staff with notes is visible in the upper left corner, likely representing a continuation or a different part of the score.

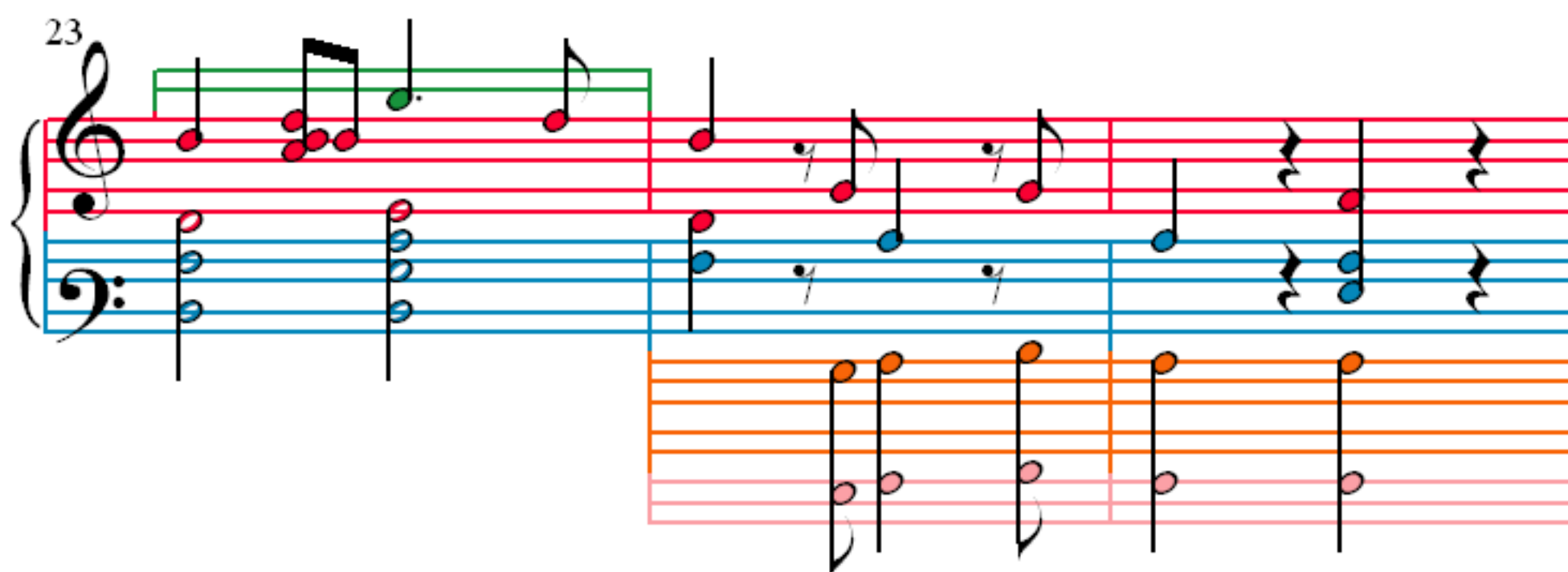
17

Measures 17-19 of the score. The vocal line continues with a melody in green and red. The piano accompaniment features a rhythmic pattern of eighth notes in the left hand and chords in the right hand, with notes in blue and red. A purple staff with notes is visible in the upper left corner, likely representing a continuation or a different part of the score.

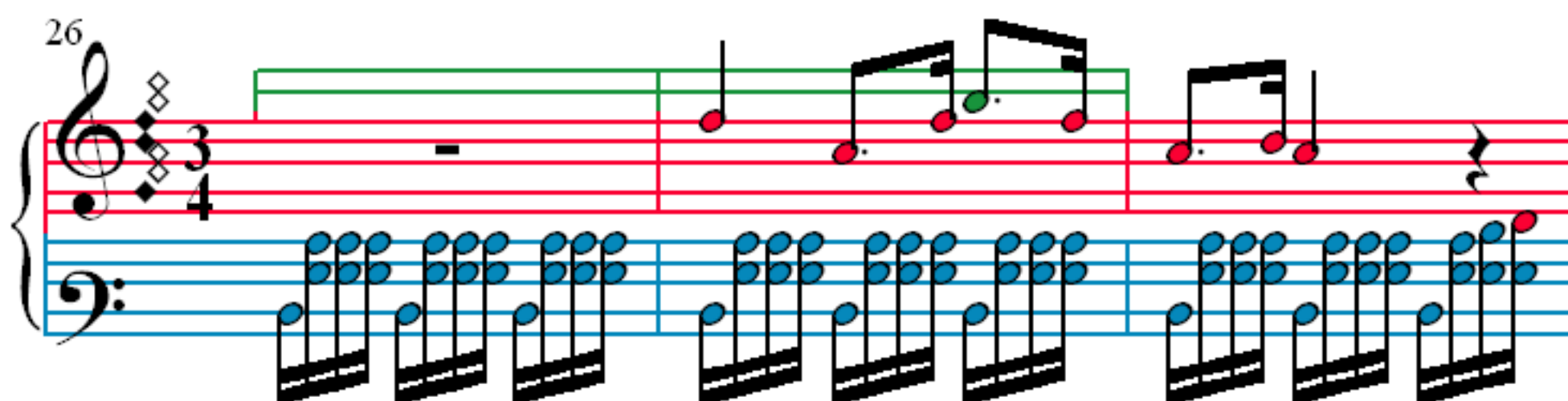
20



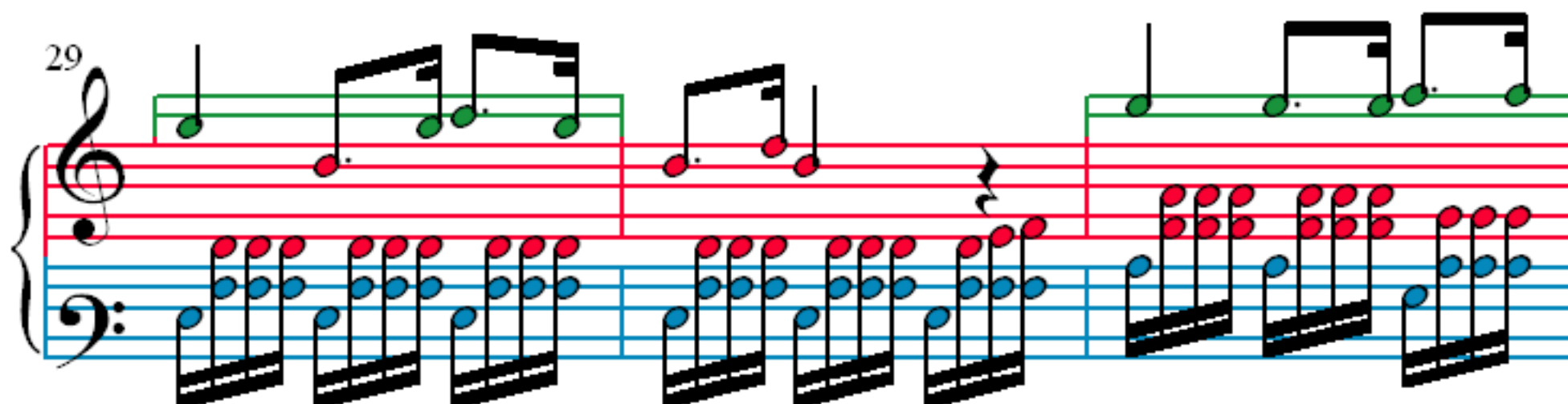
23



26



29



32

35

38

41

44

47

50

53

56

59

62

65

68

71

74

77

80

Measures 80-82 of the score. The system consists of a grand staff (treble and bass clefs) and a separate staff below. The grand staff has a red treble staff and a blue bass staff. The separate staff has an orange line. The music features complex rhythmic patterns with many beamed notes and slurs. The notes are colored: red in the treble, blue in the bass, and orange in the separate staff. The background is divided into three measures by vertical lines.

83

Measures 83-85 of the score. The system consists of a grand staff (treble and bass clefs) and a separate staff below. The grand staff has a red treble staff and a blue bass staff. The separate staff has an orange line. The music features complex rhythmic patterns with many beamed notes and slurs. The notes are colored: red in the treble, blue in the bass, and orange in the separate staff. The background is divided into three measures by vertical lines.

86

Measures 86-88 of the score. The system consists of a grand staff (treble and bass clefs) and a separate staff below. The grand staff has a red treble staff and a blue bass staff. The separate staff has an orange line. The music features complex rhythmic patterns with many beamed notes and slurs. The notes are colored: red in the treble, blue in the bass, and orange in the separate staff. The background is divided into three measures by vertical lines.

89

Measures 89-91 of the score. The system consists of a grand staff (treble and bass clefs) and a separate staff below. The grand staff has a red treble staff and a blue bass staff. The separate staff has an orange line. The music features complex rhythmic patterns with many beamed notes and slurs. The notes are colored: red in the treble, blue in the bass, and orange in the separate staff. The background is divided into three measures by vertical lines.

92

95

98

101

104

107

110

113

116

118

120

122

124

Measures 124-125 of the musical score. The system consists of three staves: a single treble staff at the top and a grand staff (treble and bass) below. The treble staff has a green line. The grand staff has red and blue lines. The music features a melody in the treble staff and a complex accompaniment in the grand staff. The accompaniment includes a series of chords in the right hand and a more active line in the left hand. The notation is in black ink on a white background.

126

Measures 126-127 of the musical score. The system consists of three staves: a single treble staff at the top and a grand staff (treble and bass) below. The treble staff has a green line. The grand staff has red and blue lines. The music features a melody in the treble staff and a complex accompaniment in the grand staff. The accompaniment includes a series of chords in the right hand and a more active line in the left hand. The notation is in black ink on a white background.

128

Measures 128-129 of the musical score. The system consists of three staves: a single treble staff at the top and a grand staff (treble and bass) below. The treble staff has a green line. The grand staff has red and blue lines. The music features a melody in the treble staff and a complex accompaniment in the grand staff. The accompaniment includes a series of chords in the right hand and a more active line in the left hand. The notation is in black ink on a white background.

130

Measures 130-131 of the musical score. The system consists of three staves: a single treble staff at the top and a grand staff (treble and bass) below. The treble staff has a green line. The grand staff has red and blue lines. The music features a melody in the treble staff and a complex accompaniment in the grand staff. The accompaniment includes a series of chords in the right hand and a more active line in the left hand. The notation is in black ink on a white background.

132

Measures 132-133 of the score. The system consists of three staves: a vocal staff in treble clef with a green line, and a piano accompaniment in grand staff (treble and bass clefs) with red and blue lines. The vocal line features a melodic phrase starting on a half note and moving to a quarter note. The piano accompaniment has a complex rhythmic pattern with many beamed notes. A repeat sign is present at the end of measure 133.

134

Measures 134-135 of the score. The system continues with the same three-staff layout. The vocal line has a melodic phrase. The piano accompaniment continues with its complex rhythmic pattern. A repeat sign is present at the end of measure 135.

136

Measures 136-137 of the score. The system continues with the same three-staff layout. The vocal line has a melodic phrase. The piano accompaniment continues with its complex rhythmic pattern. A repeat sign is present at the end of measure 137.

138

Measures 138-139 of the score. The system continues with the same three-staff layout. The vocal line has a melodic phrase. The piano accompaniment continues with its complex rhythmic pattern. A repeat sign is present at the end of measure 139.

140

142

144

147

150

Measures 150-152 of a musical score. The system consists of three staves: a vocal staff (treble clef, red lines) and a piano accompaniment (grand staff, blue and orange lines). The vocal line features a melodic phrase starting on a whole note, followed by eighth notes, and then a series of beamed sixteenth notes. The piano accompaniment includes a bass line with a whole note rest followed by eighth notes, and a right-hand line with a series of beamed sixteenth notes. Measure 152 contains a single eighth note in the vocal staff.

153

Measures 153-155 of a musical score. The system consists of three staves: a vocal staff (treble clef, red lines) and a piano accompaniment (grand staff, blue and orange lines). The vocal line features a melodic phrase starting on a whole note, followed by eighth notes, and then a series of beamed sixteenth notes. The piano accompaniment includes a bass line with a series of beamed sixteenth notes, and a right-hand line with a series of beamed sixteenth notes. Measure 155 contains a single eighth note in the vocal staff.

156

Measures 156-158 of a musical score. The system consists of three staves: a vocal staff (treble clef, red lines) and a piano accompaniment (grand staff, blue and orange lines). The vocal line features a melodic phrase starting on a whole note, followed by eighth notes, and then a series of beamed sixteenth notes. The piano accompaniment includes a bass line with a series of beamed sixteenth notes, and a right-hand line with a series of beamed sixteenth notes. Measure 158 contains a single eighth note in the vocal staff.

159

Measures 159-161 of the musical score. The system consists of three staves: a vocal staff (top) and a piano accompaniment (bottom). The vocal staff has a purple background and contains a melody with notes colored purple, green, and red. The piano accompaniment has a blue background and contains chords with notes colored blue, red, and orange. The piano part features a steady eighth-note accompaniment in the right hand and a more complex, arpeggiated pattern in the left hand.

162

Measures 162-164 of the musical score. The system consists of three staves: a vocal staff (top) and a piano accompaniment (bottom). The vocal staff has a purple background and contains a melody with notes colored purple, green, and red. The piano accompaniment has a blue background and contains chords with notes colored blue, red, and orange. The piano part continues with a steady eighth-note accompaniment in the right hand and a more complex, arpeggiated pattern in the left hand.

165

Measures 165-168 of the musical score. The system consists of three staves: a vocal staff (top) and a piano accompaniment (bottom). The vocal staff has a purple background and contains a melody with notes colored purple, green, and red. The piano accompaniment has a blue background and contains chords with notes colored blue, red, and orange. The piano part continues with a steady eighth-note accompaniment in the right hand and a more complex, arpeggiated pattern in the left hand.