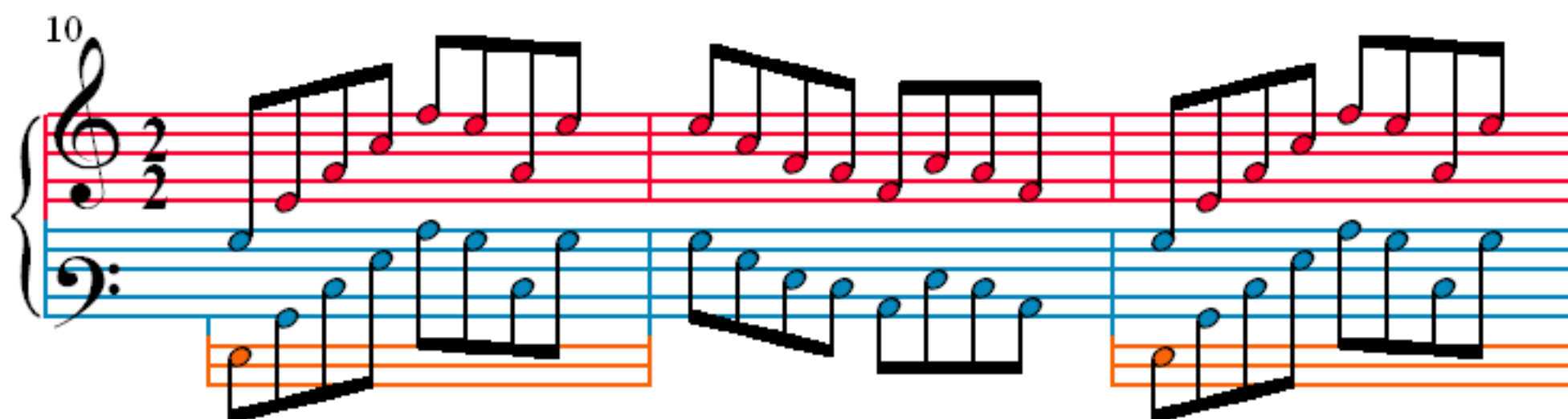
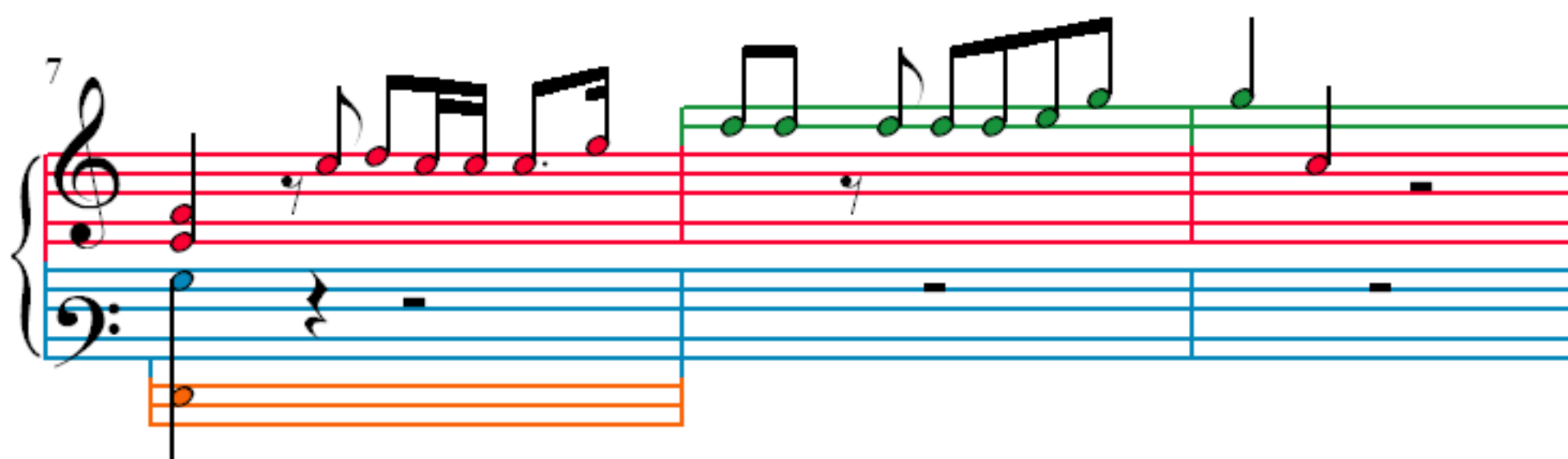
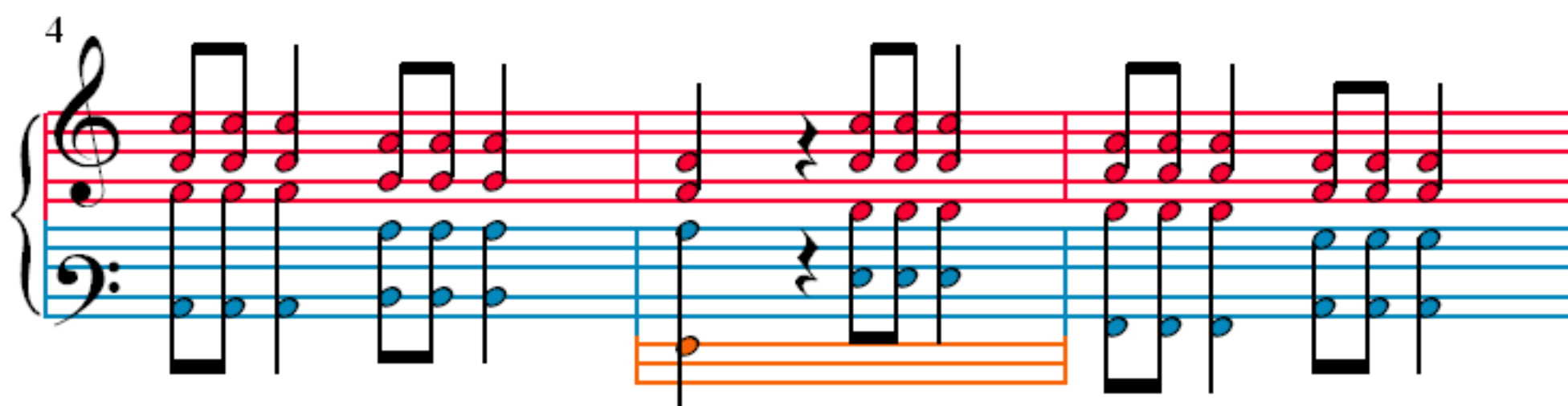
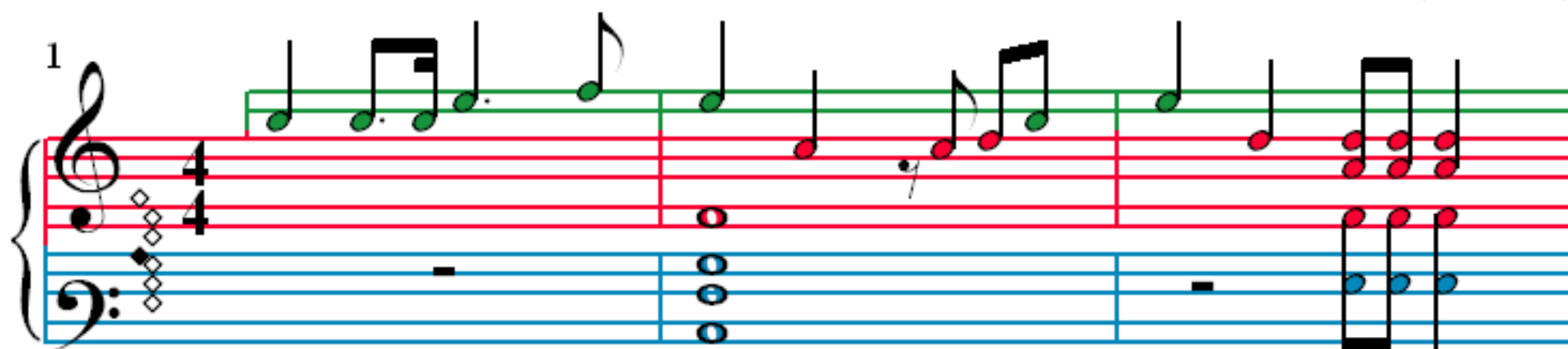


La Traviata - N9 Scena ed aria

G. Verdi (1813–1901)



13

16

19

22

25

Measures 25-28. The system includes a grand staff with treble and bass clefs, and two additional staves below. The treble staff has a green bracket over measures 25-26. The bass staff has blue notes. The two lower staves have orange and pink notes.

29

Measures 29-32. The system includes a grand staff with treble and bass clefs, and two additional staves below. The treble staff has a green bracket over measures 31-32. The bass staff has blue notes. The two lower staves have orange and pink notes.

33

Measures 33-35. The system includes a grand staff with treble and bass clefs, and two additional staves below. The treble staff has a green bracket over measure 33. The bass staff has blue notes. The two lower staves have orange and pink notes.

36

Measures 36-39. The system includes a grand staff with treble and bass clefs, and two additional staves below. The treble staff has a green bracket over measures 37-38. The bass staff has blue notes. The two lower staves have orange and pink notes.

39

42

45

48

51

54

57

60

63

66

69

72

75

Measures 75-77 of the score. Measure 75 features a treble staff with a melodic line of eighth notes and a bass staff with a rhythmic accompaniment of eighth notes. Measure 76 continues the melodic line in the treble and the accompaniment in the bass. Measure 77 shows a continuation of the melodic line in the treble, with a final measure of the system.

78

Measures 78-80 of the score. Measure 78 features a treble staff with a melodic line of eighth notes and a bass staff with a rhythmic accompaniment of eighth notes. Measure 79 continues the melodic line in the treble and the accompaniment in the bass. Measure 80 shows a continuation of the melodic line in the treble, with a final measure of the system.

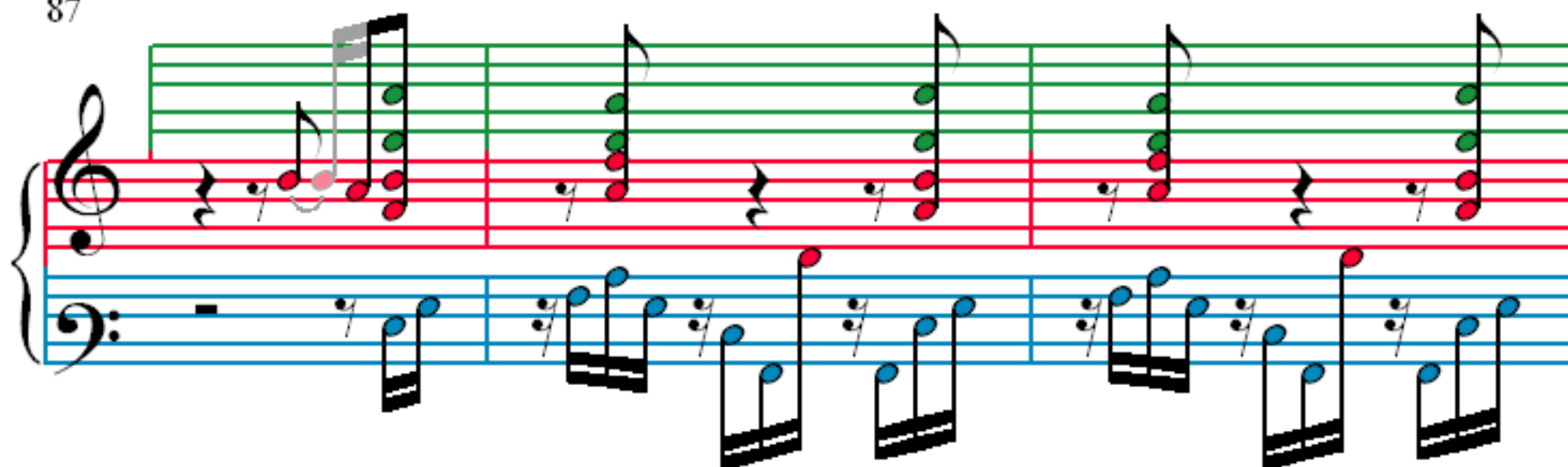
81

Measures 81-83 of the score. Measure 81 features a treble staff with a melodic line of eighth notes and a bass staff with a rhythmic accompaniment of eighth notes. Measure 82 continues the melodic line in the treble and the accompaniment in the bass. Measure 83 shows a continuation of the melodic line in the treble, with a final measure of the system.

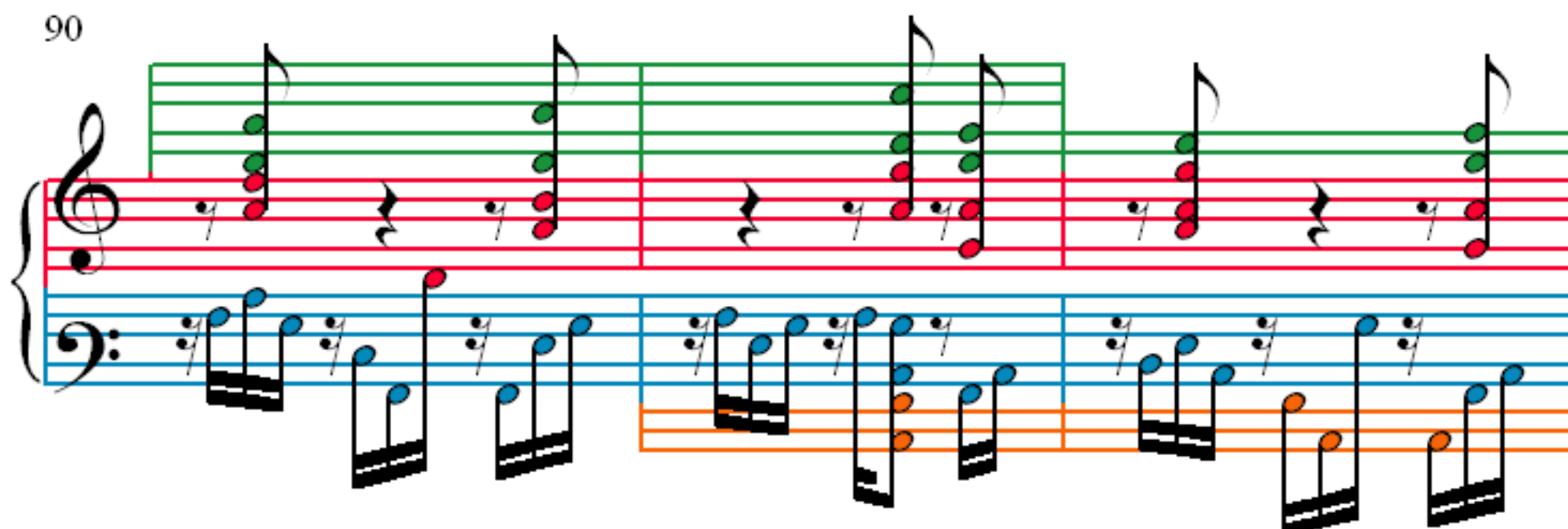
84

Measures 84-86 of the score. Measure 84 features a treble staff with a melodic line of eighth notes and a bass staff with a rhythmic accompaniment of eighth notes. Measure 85 continues the melodic line in the treble and the accompaniment in the bass. Measure 86 shows a continuation of the melodic line in the treble, with a final measure of the system.

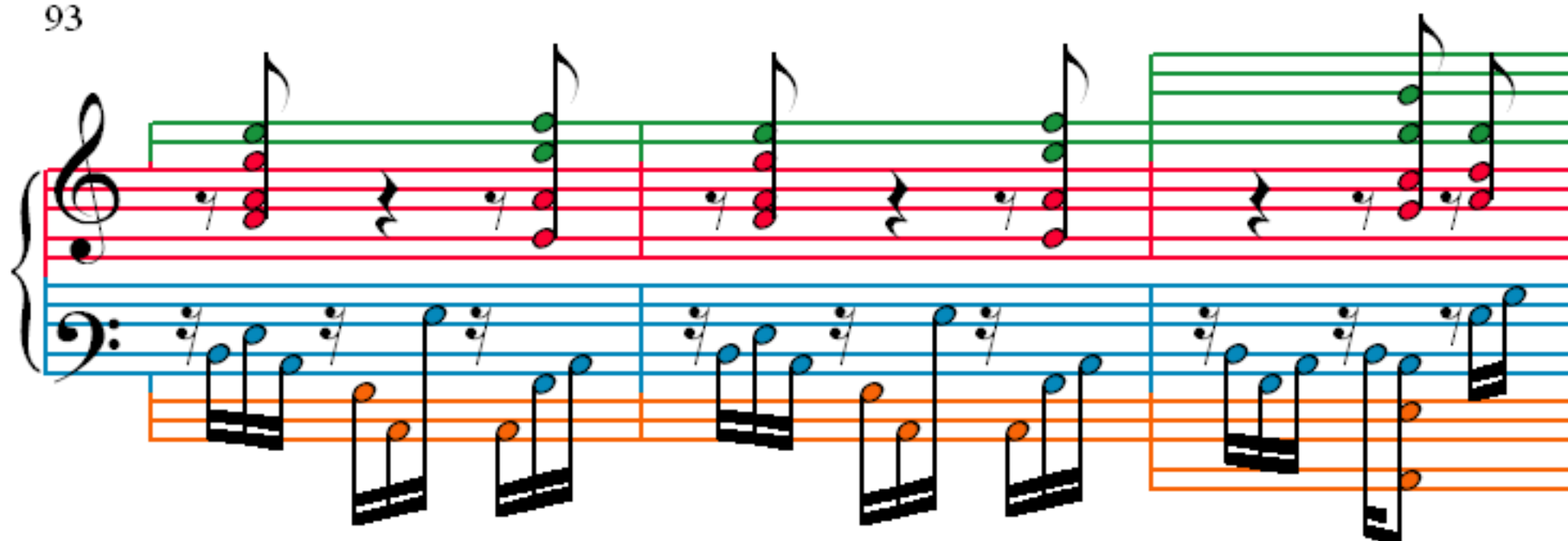
87



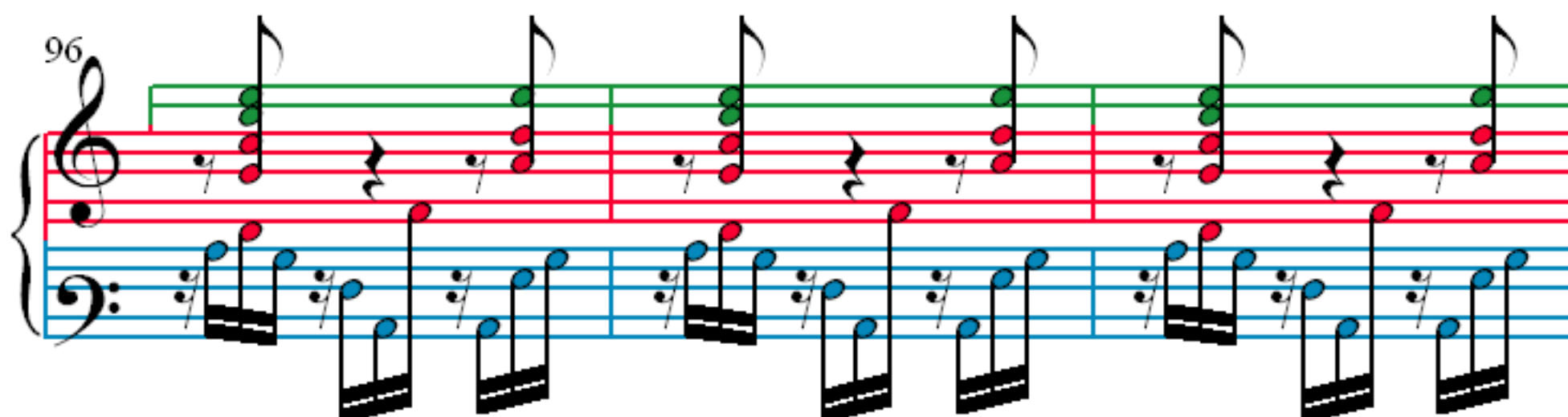
90



93



96



99

102

106

109

112

115

118

121

124

Measures 124-125. The system shows a grand staff with treble and bass clefs. The treble staff has a key signature of one flat and a 7/8 time signature. The melody in the treble staff features a sequence of eighth and sixteenth notes, with some notes highlighted in green and others in red. The bass staff provides a harmonic accompaniment with chords and single notes, some of which are highlighted in blue. An orange staff is visible below the bass staff, containing a single note.

126

Measures 126-127. The system continues the musical notation. The treble staff shows a continuation of the melodic line with some notes in green and others in red. The bass staff continues the accompaniment with chords and single notes, some highlighted in blue. An orange staff is visible below the bass staff, containing a single note.

128

Measures 128-129. The system continues the musical notation. The treble staff shows a continuation of the melodic line with some notes in green and others in red. The bass staff continues the accompaniment with chords and single notes, some highlighted in blue. An orange staff is visible below the bass staff, containing a single note.

130

Measures 130-131. The system continues the musical notation. The treble staff shows a continuation of the melodic line with some notes in green and others in red. The bass staff continues the accompaniment with chords and single notes, some highlighted in blue. An orange staff is visible below the bass staff, containing a single note.

132

134

136

138

140

142

144

146

148

Measures 148-150 of a musical score. The score is written for a grand staff (treble and bass clefs) and includes a third staff below the bass clef. The music is in 4/4 time. The melody is in the treble clef, and the bass line is in the bass clef. The third staff contains a single note, likely a pedal point. The notes are color-coded: red for the melody, blue for the bass line, and orange for the third staff. The treble clef staff has a green line above it, and the bass clef staff has a blue line below it. The third staff has an orange line above it.

151

Measures 151-153 of a musical score. The score is written for a grand staff (treble and bass clefs) and includes a third staff below the bass clef. The music is in 4/4 time. The melody is in the treble clef, and the bass line is in the bass clef. The third staff contains a single note, likely a pedal point. The notes are color-coded: red for the melody, blue for the bass line, and orange for the third staff. The treble clef staff has a green line above it, and the bass clef staff has a blue line below it. The third staff has an orange line above it.

154

Measures 154-156 of a musical score. The score is written for a grand staff (treble and bass clefs) and includes a third staff below the bass clef. The music is in 4/4 time. The melody is in the treble clef, and the bass line is in the bass clef. The third staff contains a single note, likely a pedal point. The notes are color-coded: red for the melody, blue for the bass line, and orange for the third staff. The treble clef staff has a green line above it, and the bass clef staff has a blue line below it. The third staff has an orange line above it.

157

159

161

163

165

167

169

173