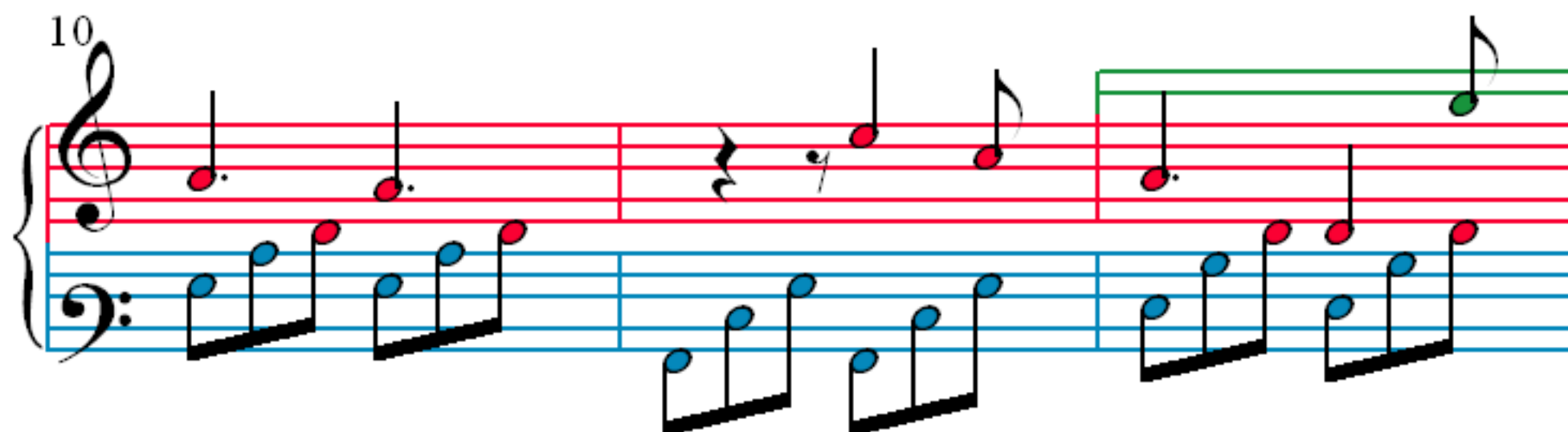
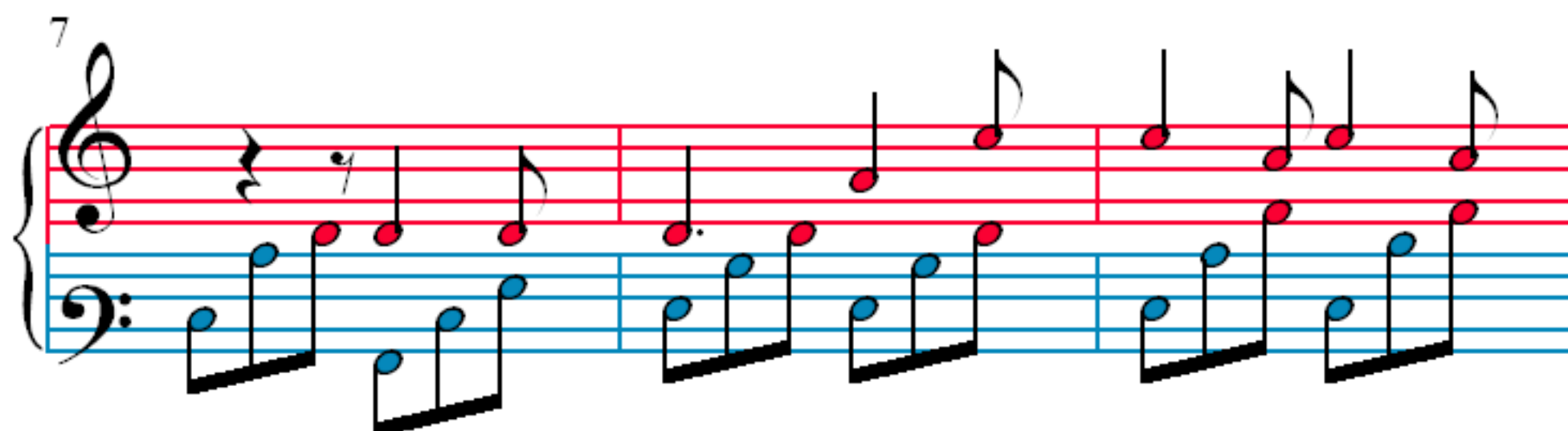
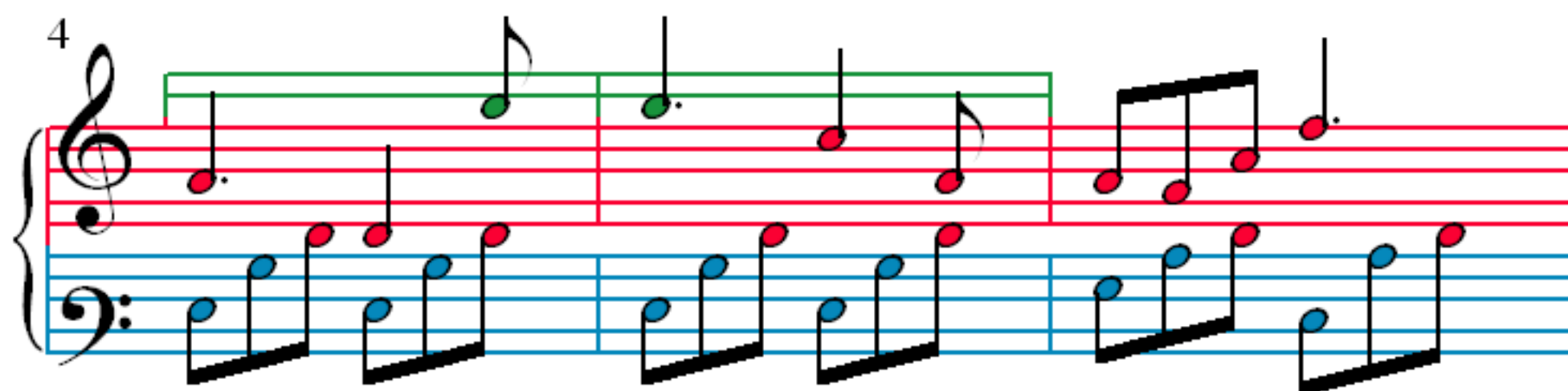
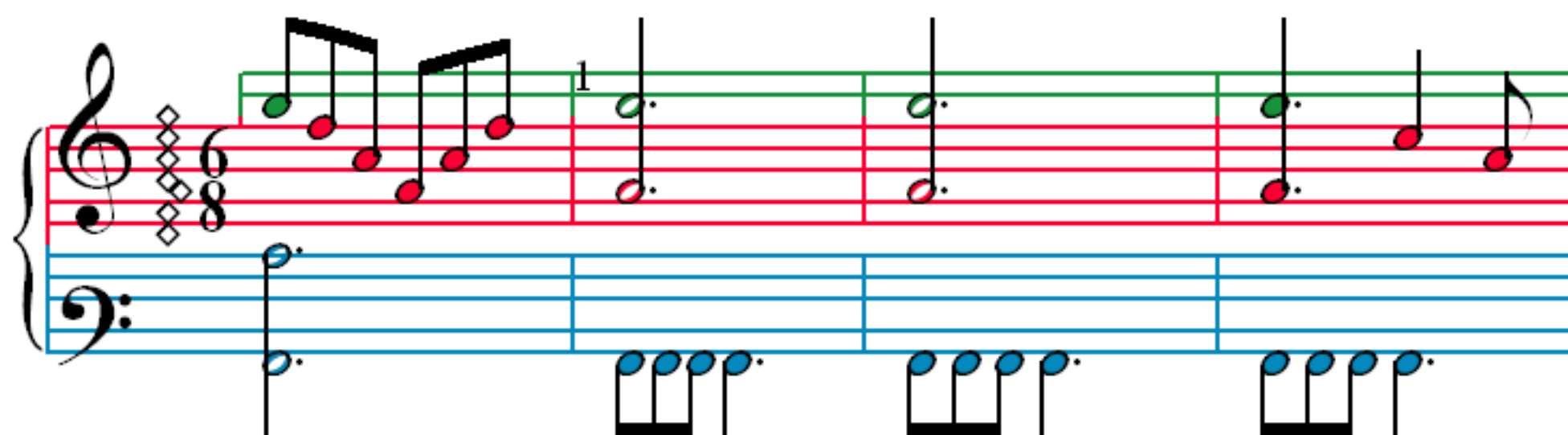


# Prisoner's Chorus from Nabucco



13

Measures 13-15. Treble clef has a green line above the staff. Bass clef has a blue line below the staff. Notes are red in treble and blue in bass.

16

Measures 16-19. Treble clef has a green line above the staff. Bass clef has a blue line below the staff. Notes are red in treble and blue in bass. An orange line is below the bass staff in measures 16-17.

20

Measures 20-23. Treble clef has a green line above the staff. Bass clef has a blue line below the staff. Notes are red in treble and blue in bass.

24

Measures 24-27. Treble clef has a red line above the staff. Bass clef has a blue line below the staff. Notes are red in treble and blue in bass. An orange line is below the bass staff in measures 25-26.

28

32

36

40

44

47

51

55