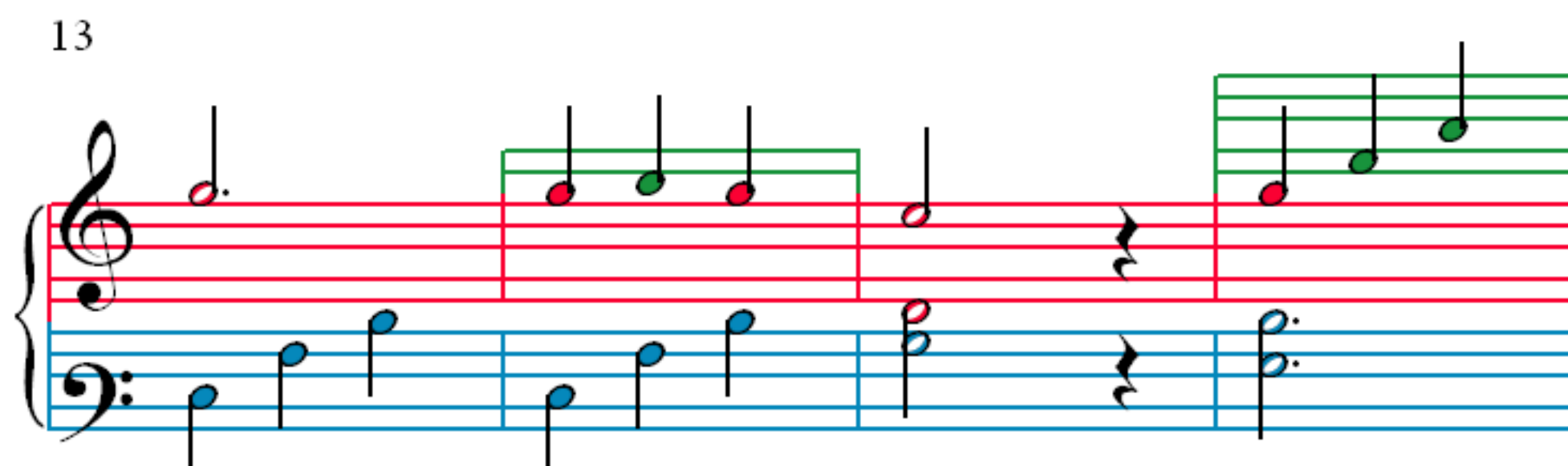
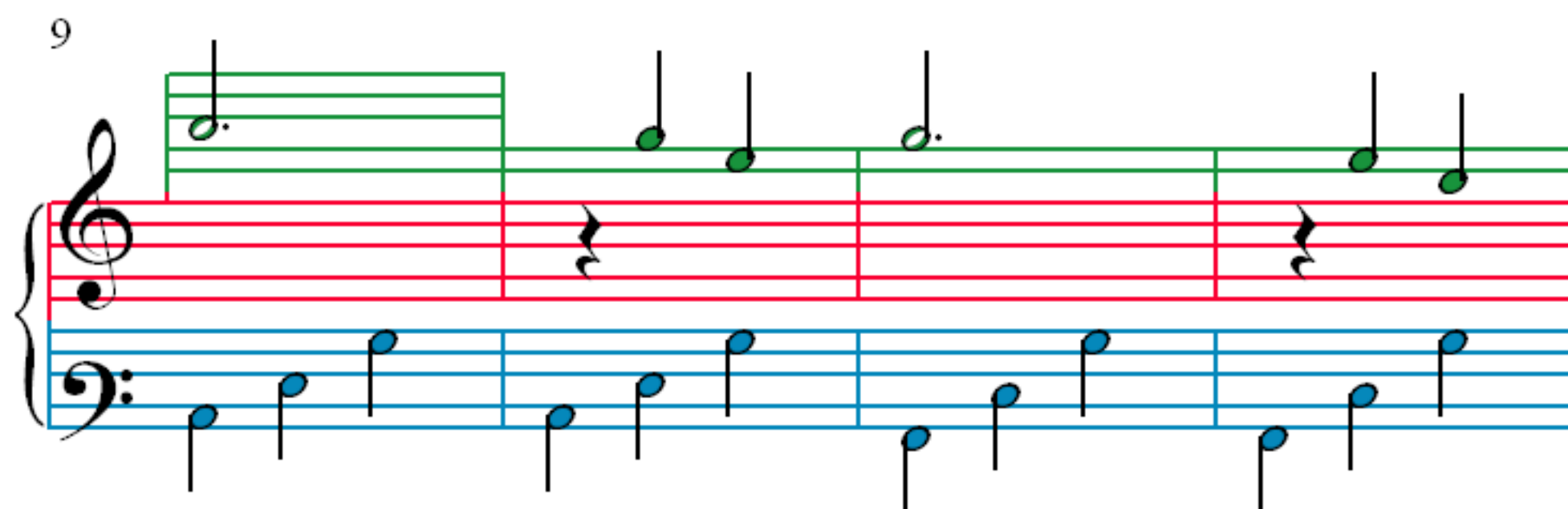
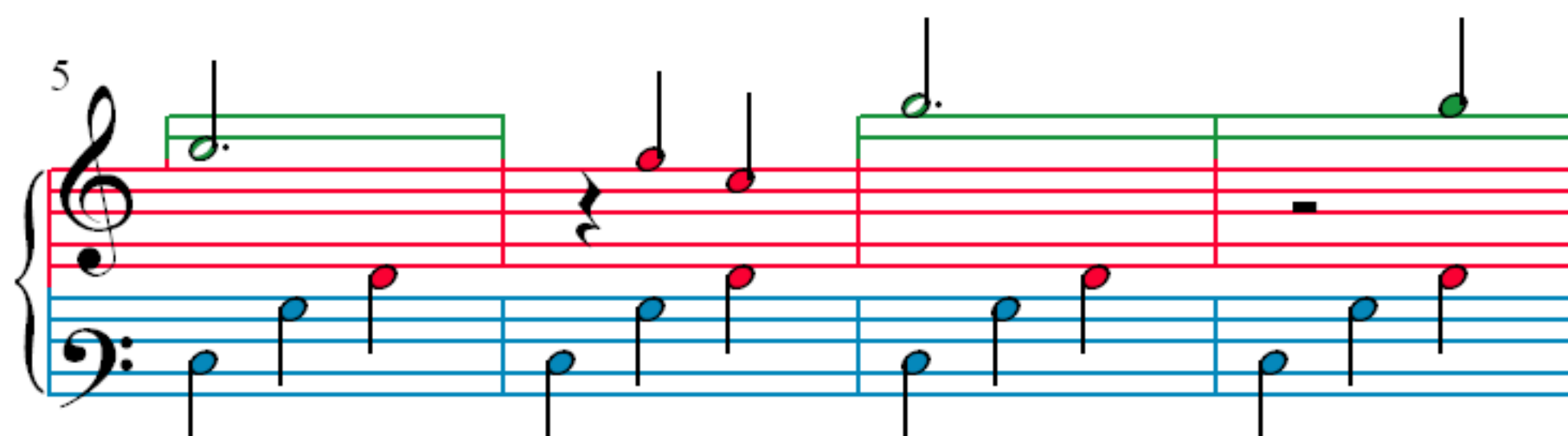
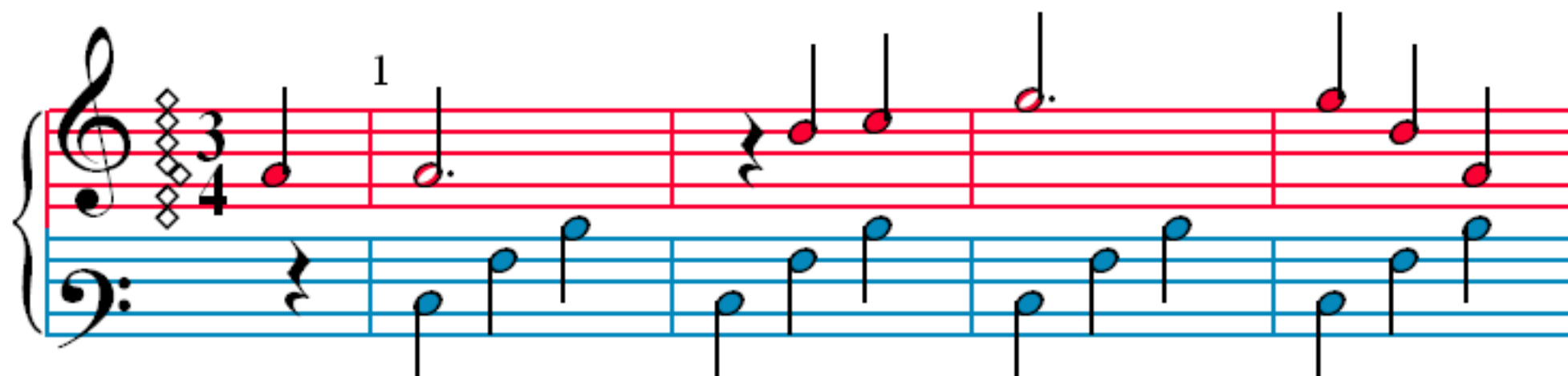


Waves of the Danube



17

Measures 17-20. Treble clef: four measures of green notes on a high staff. Bass clef: four measures of blue notes on a low staff. Measure 18 has an orange box around the first blue note.

21

Measures 21-24. Treble clef: four measures of green notes on a high staff. Bass clef: four measures of blue notes on a low staff. Measure 22 has an orange box around the first blue note.

25

Measures 25-28. Treble clef: four measures of green notes on a high staff. Bass clef: four measures of blue notes on a low staff. Measure 28 has a green note on a high staff.

29

Measures 29-32. Treble clef: four measures of green notes on a high staff. Bass clef: four measures of blue notes on a low staff. Measure 32 has an orange box around the first blue note.