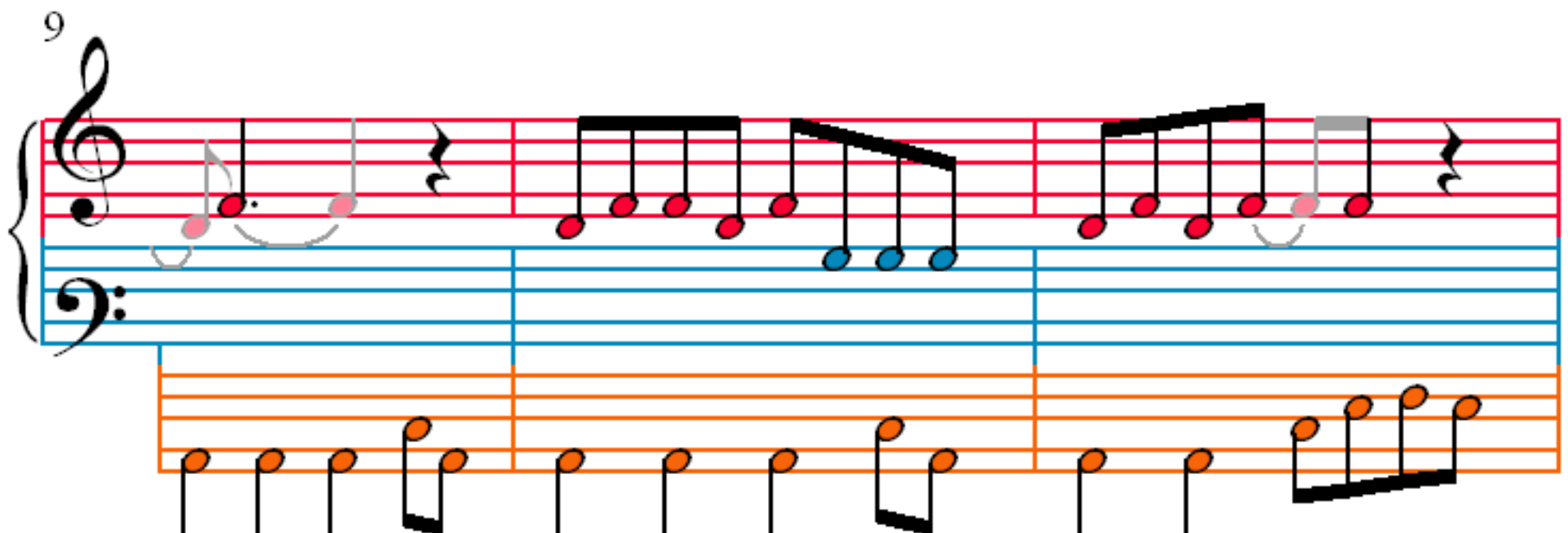
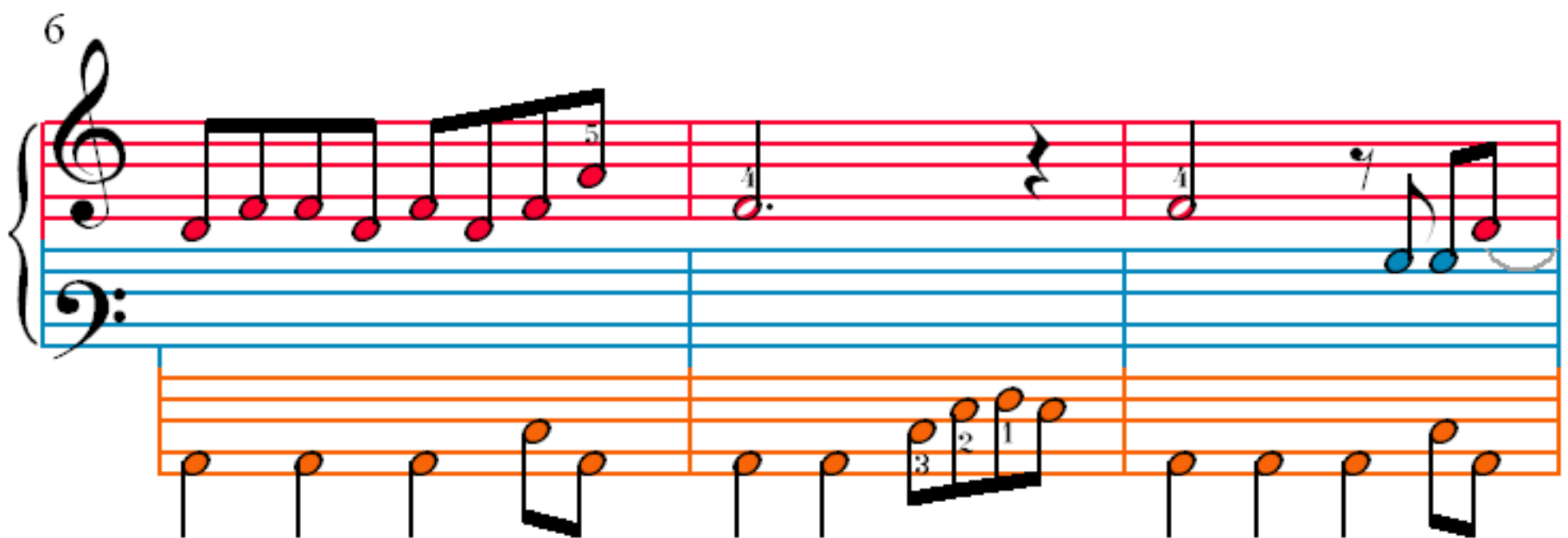
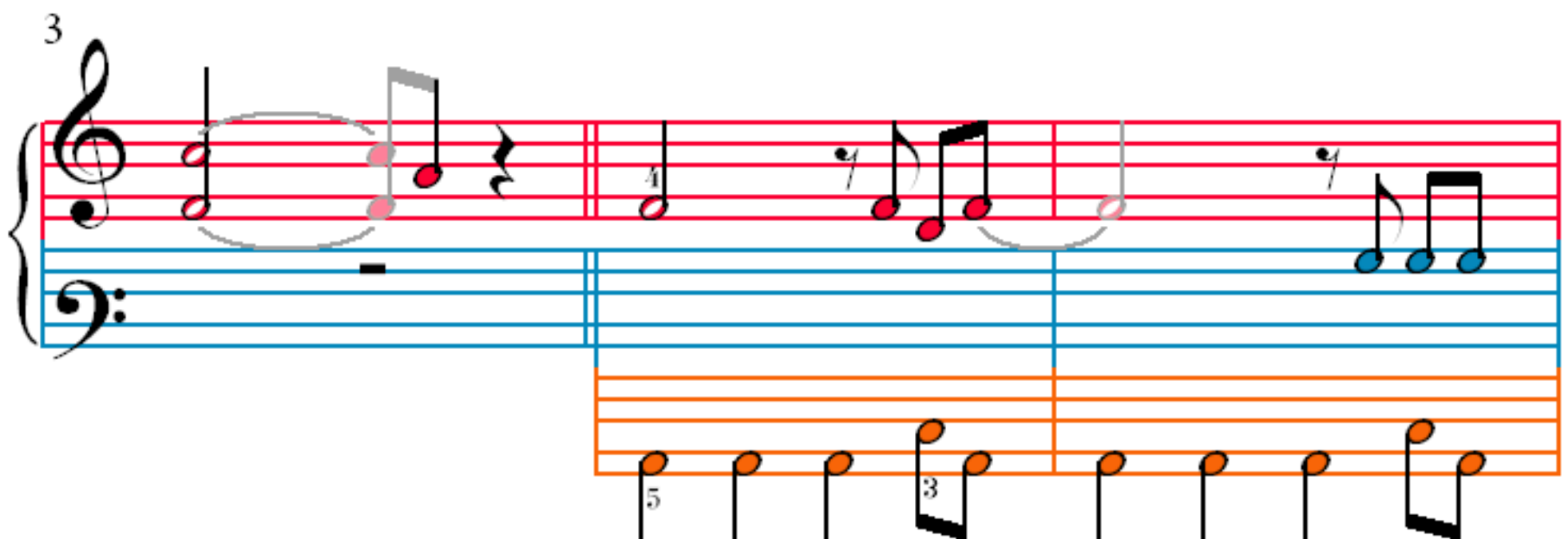
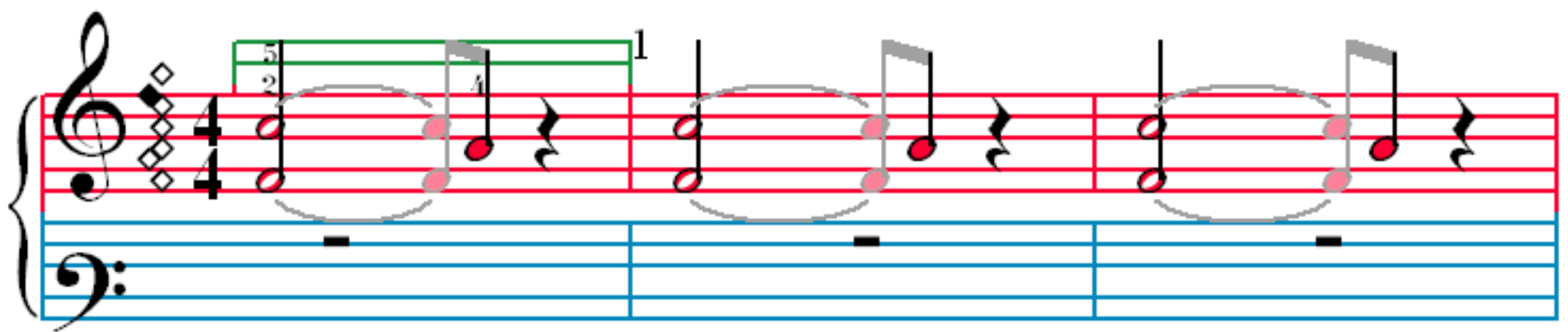


Rumour Has It

Ryan Tedder & Adele Adkins



12

Measures 12-14. Treble clef: Measure 12 has a quarter note G4, eighth notes A4-B4, quarter note C5, eighth notes B4-A4, quarter note G4. Measure 13 has a half note G4, quarter note A4, quarter note B4, quarter note C5. Measure 14 has a triplet of eighth notes G4-A4-B4, quarter note C5, quarter note B4, quarter note A4, quarter note G4. Bass clef: Measure 12 has a quarter note G2, eighth notes A2-B2, quarter note C3, eighth notes B2-A2, quarter note G2. Measure 13 has a half note G2, quarter note A2, quarter note B2, quarter note C3. Measure 14 has a quarter note G2, eighth notes A2-B2, quarter note C3, eighth notes B2-A2, quarter note G2. A third system of staves is shown below.

15

Measures 15-17. Treble clef: Measure 15 has a quarter note G4, eighth notes A4-B4, quarter note C5, eighth notes B4-A4, quarter note G4. Measure 16 has a quarter rest, quarter note A4, quarter note B4, quarter note C5. Measure 17 has a quarter note G4, eighth notes A4-B4, quarter note C5, eighth notes B4-A4, quarter note G4. Bass clef: Measure 15 has a quarter note G2, eighth notes A2-B2, quarter note C3, eighth notes B2-A2, quarter note G2. Measure 16 has a half note G2, quarter note A2, quarter note B2, quarter note C3. Measure 17 has a quarter note G2, eighth notes A2-B2, quarter note C3, eighth notes B2-A2, quarter note G2. A third system of staves is shown below.

18

Measures 18-20. Treble clef: Measure 18 has a quarter note G4, eighth notes A4-B4, quarter note C5, eighth notes B4-A4, quarter note G4. Measure 19 has a half note G4, quarter note A4, quarter note B4, quarter note C5. Measure 20 has a triplet of eighth notes G4-A4-B4, quarter note C5, quarter note B4, quarter note A4, quarter note G4. Bass clef: Measure 18 has a quarter note G2, eighth notes A2-B2, quarter note C3, eighth notes B2-A2, quarter note G2. Measure 19 has a half note G2, quarter note A2, quarter note B2, quarter note C3. Measure 20 has a quarter note G2, eighth notes A2-B2, quarter note C3, eighth notes B2-A2, quarter note G2. A third system of staves is shown below.

21

Measures 21-23. Treble clef: Measure 21 has a quarter note G4, eighth notes A4-B4, quarter note C5, eighth notes B4-A4, quarter note G4. Measure 22 has a half note G4, quarter note A4, quarter note B4, quarter note C5. Measure 23 has a triplet of eighth notes G4-A4-B4, quarter note C5, quarter note B4, quarter note A4, quarter note G4. Bass clef: Measure 21 has a quarter note G2, eighth notes A2-B2, quarter note C3, eighth notes B2-A2, quarter note G2. Measure 22 has a half note G2, quarter note A2, quarter note B2, quarter note C3. Measure 23 has a quarter note G2, eighth notes A2-B2, quarter note C3, eighth notes B2-A2, quarter note G2. A third system of staves is shown below.

A musical score for the song "The Rose Tree". The score is written for a piano, with a treble clef on the top staff and a bass clef on the bottom staff. The key signature is one flat (B-flat), and the time signature is 3/4. The score is divided into three measures by vertical bar lines. The first measure contains a treble staff with a melody starting on a G4 (labeled '5') and a bass staff with a melody starting on a G2 (labeled '1'). The second measure contains a treble staff with a melody starting on a G4 (labeled '3') and a bass staff with a melody starting on a G2 (labeled '1'). The third measure contains a treble staff with a melody starting on a G4 (labeled '2') and a bass staff with a melody starting on a G2 (labeled '1'). The score is labeled with the number '24' in the top left corner.

A musical score for the song 'The Rose Tree'. The score is written for a piano, with a treble clef on the top staff and a bass clef on the bottom staff. The key signature is one flat (B-flat), and the time signature is 4/4. The score is divided into three measures. The first measure contains a whole note chord of F4 and Bb4 in the treble, and a whole note chord of F3 and Bb2 in the bass. The second measure contains a whole note chord of F4 and Bb4 in the treble, and a whole note chord of F3 and Bb2 in the bass. The third measure contains a whole note chord of F4 and Bb4 in the treble, and a whole note chord of F3 and Bb2 in the bass. The notes are color-coded: red for the treble and blue for the bass. The notes are also connected by lines, indicating they are part of the same chord. The score is labeled with the number 30 in the top left corner.

[illegible]