

# Menuett by J.Krieger

J.Krieger

$\text{♩} = 120$

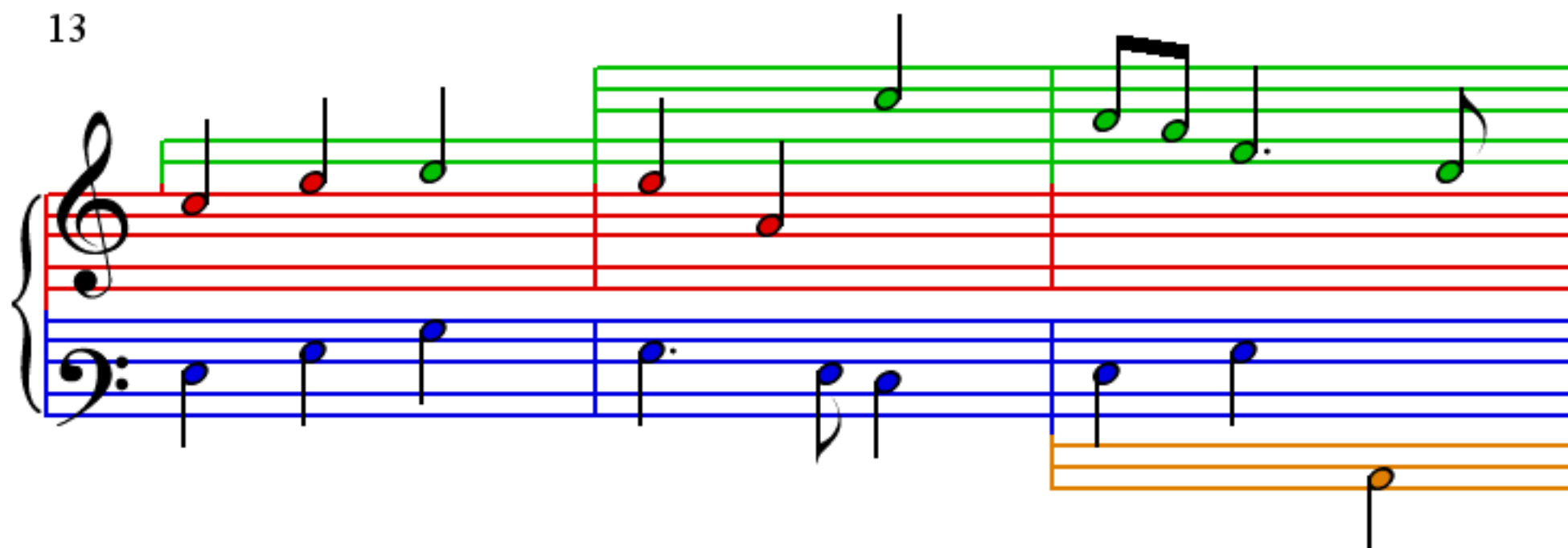
Measures 1-3 of the Minuet by J. Krieger. The piece is in 3/4 time. The treble clef staff (red lines) contains a melody with a green line above it. The bass clef staff (blue lines) contains a bass line. The key signature is one flat (B-flat).

Measures 4-6 of the Minuet by J. Krieger. The treble clef staff (red lines) contains a melody with a green line above it. The bass clef staff (blue lines) contains a bass line. The key signature is one flat (B-flat).

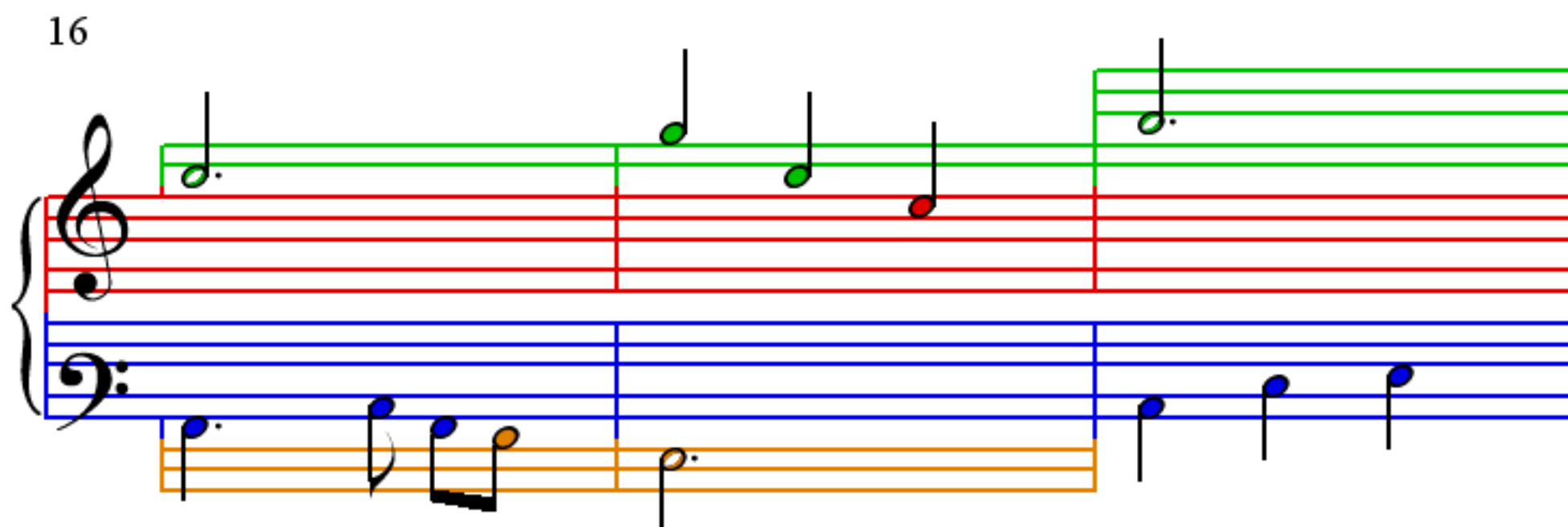
Measures 7-9 of the Minuet by J. Krieger. The treble clef staff (red lines) contains a melody with a green line above it. The bass clef staff (blue lines) contains a bass line. The key signature is one flat (B-flat). A repeat sign is present at the end of measure 9.

Measures 10-12 of the Minuet by J. Krieger. The treble clef staff (red lines) contains a melody with a green line above it. The bass clef staff (blue lines) contains a bass line. The key signature is one flat (B-flat).

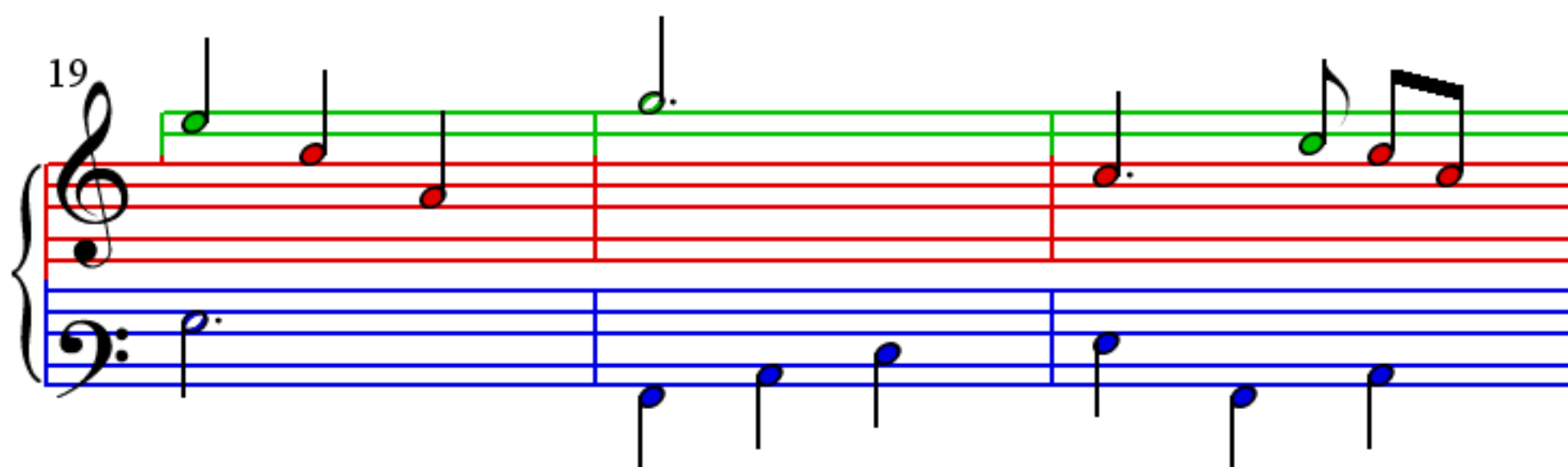
13



16



19



22

