

Latomas-Vision

Sz. Majkapar

1. = 120

Measures 1-3 of the piece. The music is in 3/8 time. The treble clef staff has a key signature of three sharps (F#, C#, G#). The melody consists of eighth notes: G4 (green), A4 (green), B4 (green) in measure 1; A4 (green), G4 (green), F#4 (green) in measure 2; and G4 (green), A4 (green), B4 (green) in measure 3. The bass clef staff has whole rests in all three measures.

4

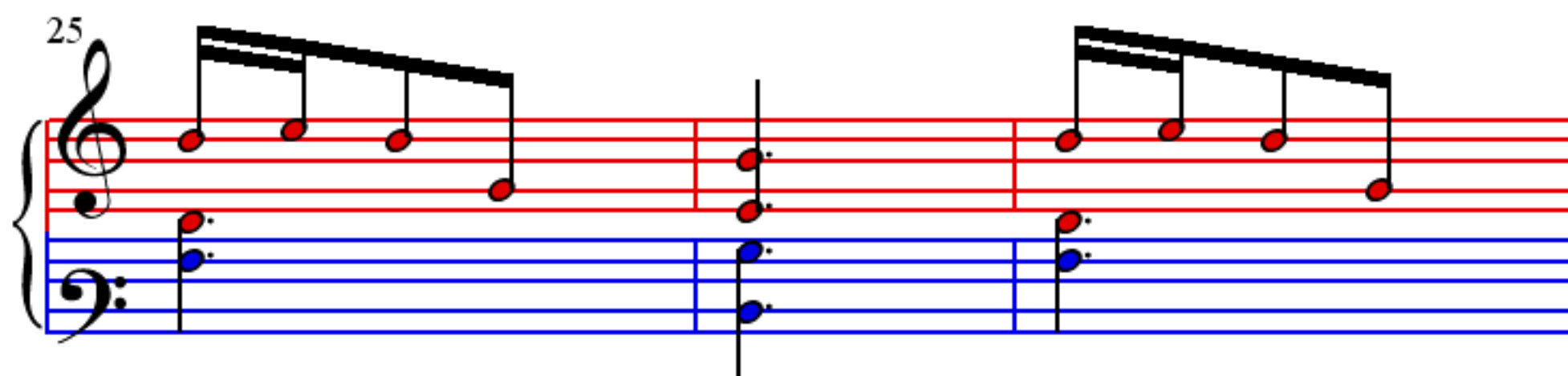
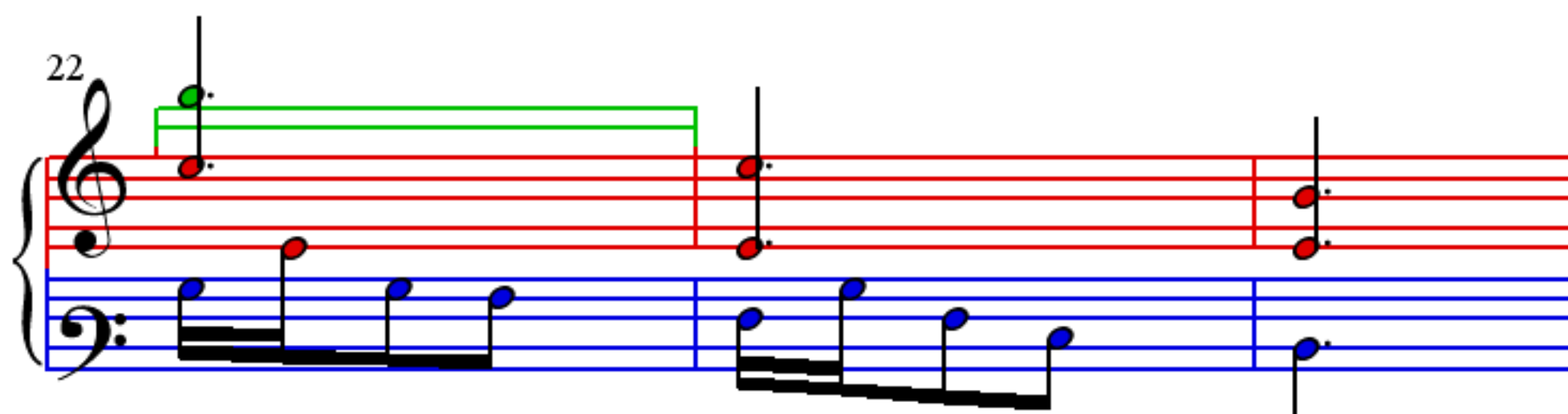
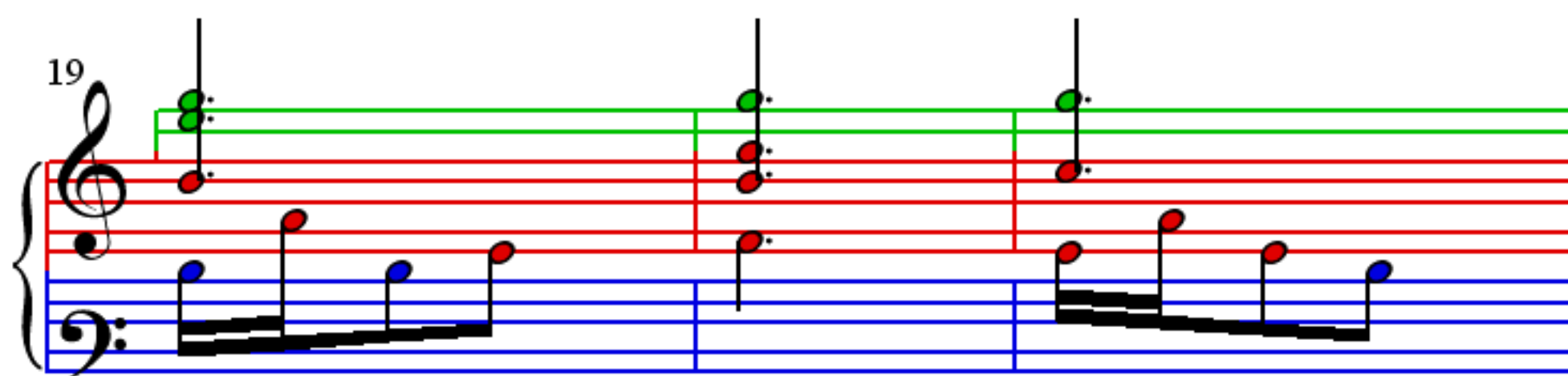
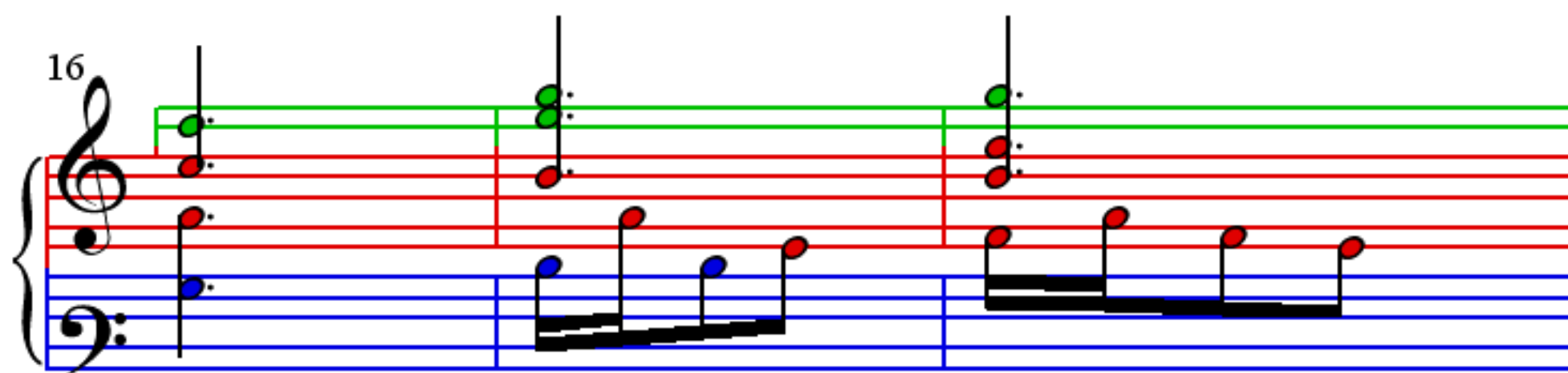
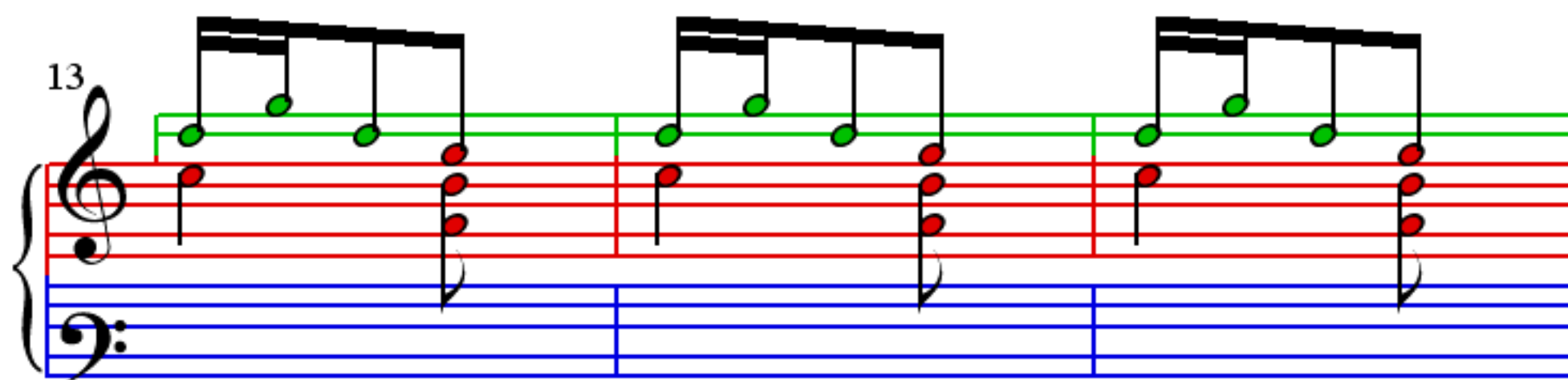
Measures 4-6 of the piece. The treble clef staff has a key signature of three sharps (F#, C#, G#). The melody consists of eighth notes: G4 (green), A4 (green), B4 (green) in measure 4; A4 (green), G4 (green), F#4 (green) in measure 5; and G4 (green), A4 (green), B4 (green) in measure 6. The bass clef staff has whole rests in all three measures.

7

Measures 7-9 of the piece. The treble clef staff has a key signature of three sharps (F#, C#, G#). The melody consists of eighth notes: G4 (green), A4 (green), B4 (green) in measure 7; A4 (green), G4 (green), F#4 (green) in measure 8; and G4 (green), A4 (green), B4 (green) in measure 9. The bass clef staff has whole rests in all three measures.

10

Measures 10-12 of the piece. The treble clef staff has a key signature of three sharps (F#, C#, G#). The melody consists of eighth notes: G4 (green), A4 (green), B4 (green) in measure 10; A4 (green), G4 (green), F#4 (green) in measure 11; and G4 (green), A4 (green), B4 (green) in measure 12. The bass clef staff has whole rests in all three measures.



28

31

34

37