

In Men, Who Feel Love

Mozart

$1. = 120$

Measures 1-3 of the piece. The music is in 6/8 time. The right hand (treble clef) features a melody with eighth and sixteenth notes, while the left hand (bass clef) provides a simple harmonic accompaniment with quarter notes. The notes are color-coded: green for the right hand and blue for the left hand.

4

Measures 4-6. The melody continues with similar rhythmic patterns. The accompaniment in the left hand consists of quarter notes and rests.

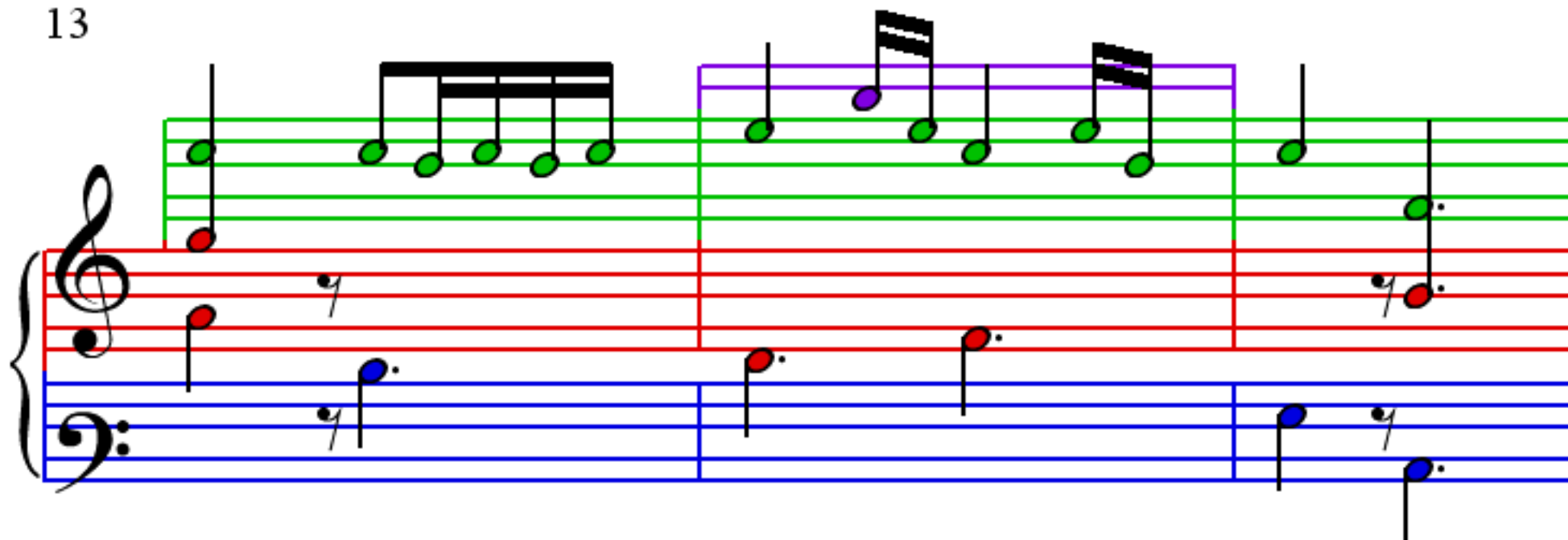
7

Measures 7-9. The right hand melody includes some dotted rhythms. The left hand accompaniment continues with quarter notes.

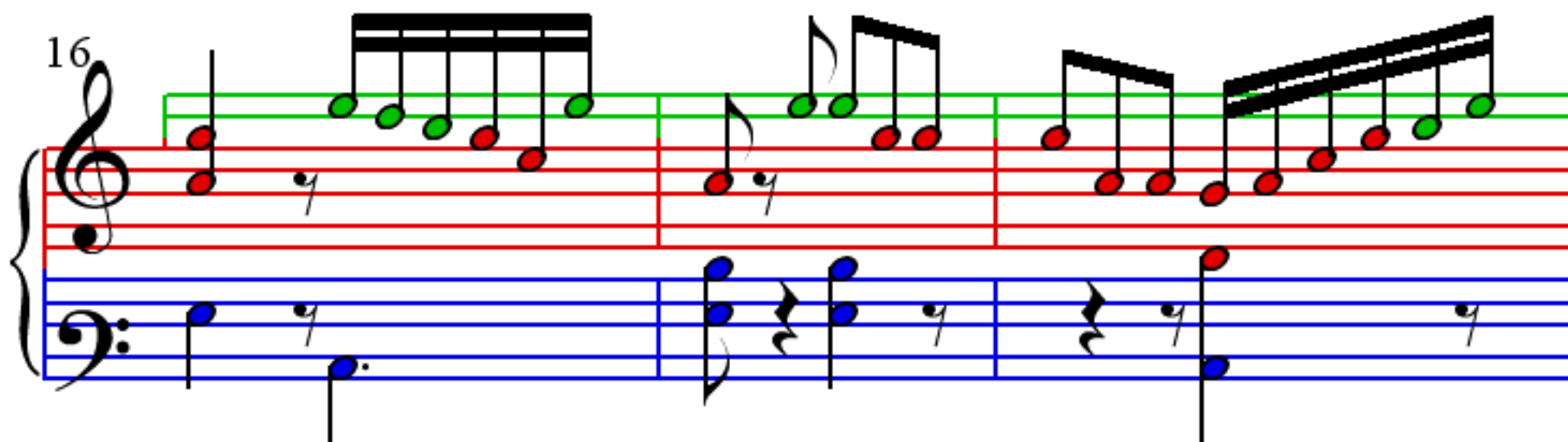
10

Measures 10-12. The piece concludes with a final cadence. The right hand melody ends with a half note, and the left hand accompaniment ends with a half note.

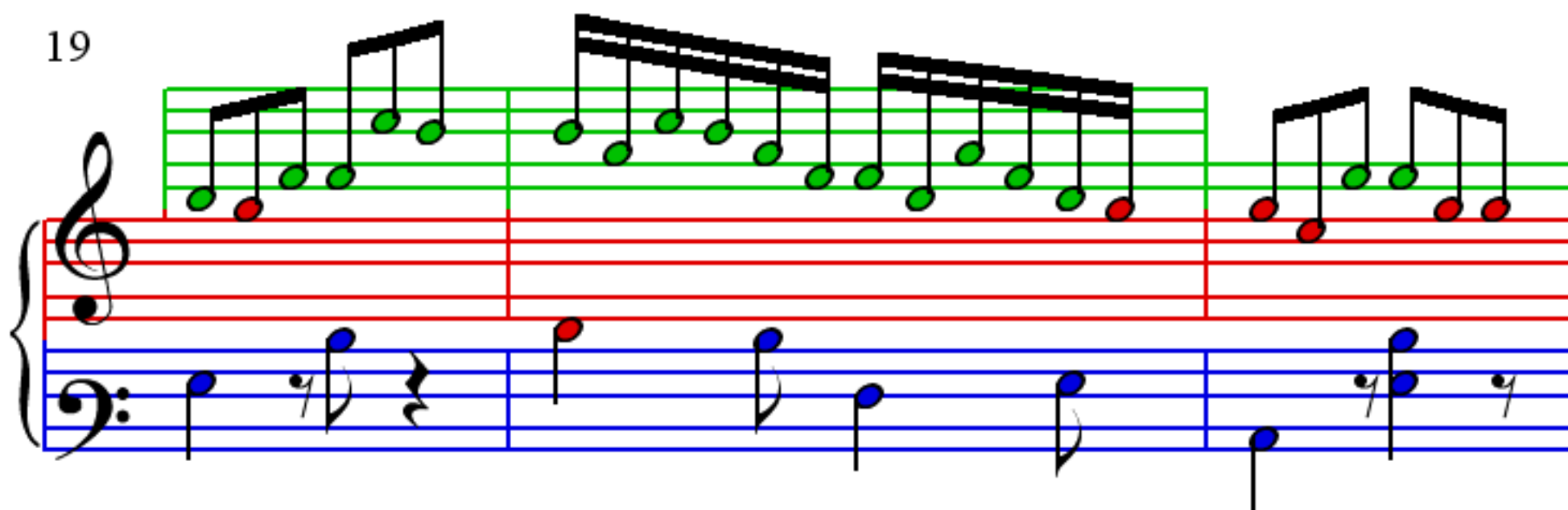
13



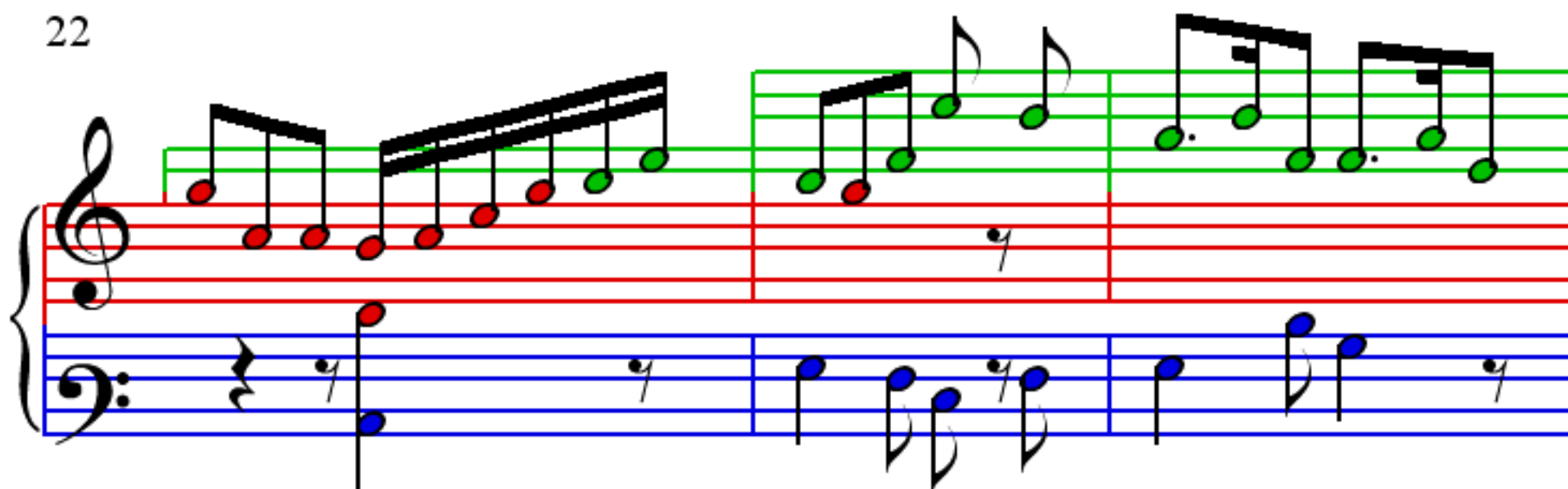
16



19



22



25

29

32

36