

Canon in D

♩ = 132

Pashabel

1

Measures 1-4 of the Canon in D. The music is in D major and 4/4 time. The first staff (treble clef) contains a whole note chord of D4, F#4, and A4 in measures 1-3, and a whole note D5 in measure 4. The second staff (bass clef) contains a whole note chord of D3, F#3, and A3 in measures 1-3, and a whole note D4 in measure 4. The third staff (bass clef) contains a whole note D2 in measures 1-3, and a whole note D3 in measure 4.

5

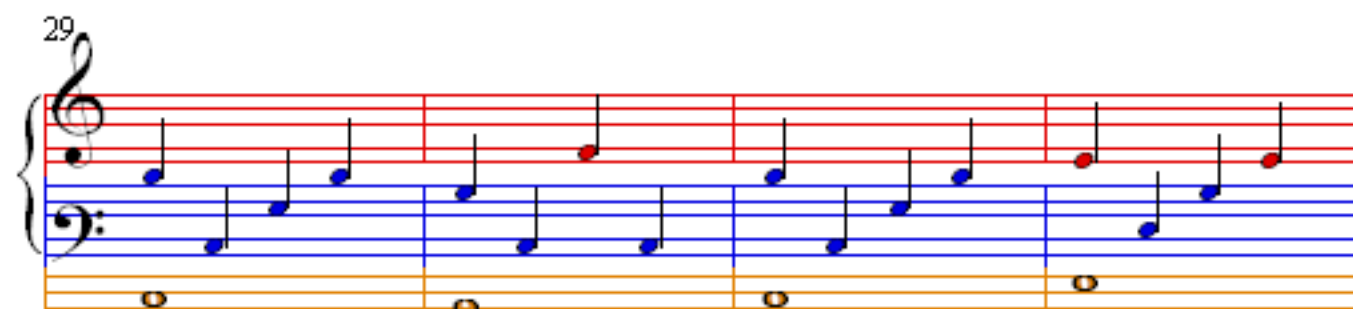
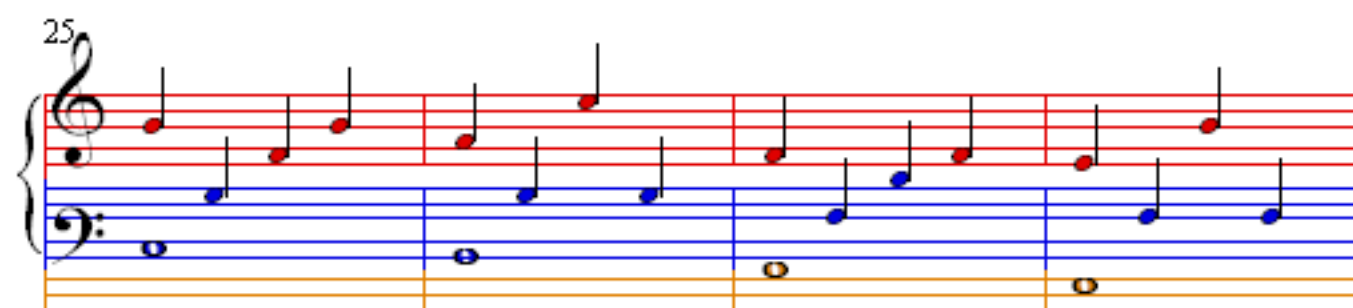
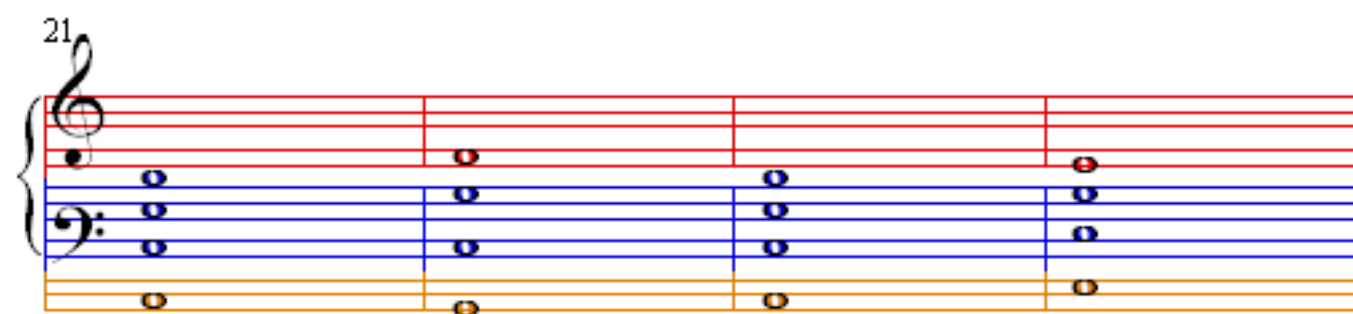
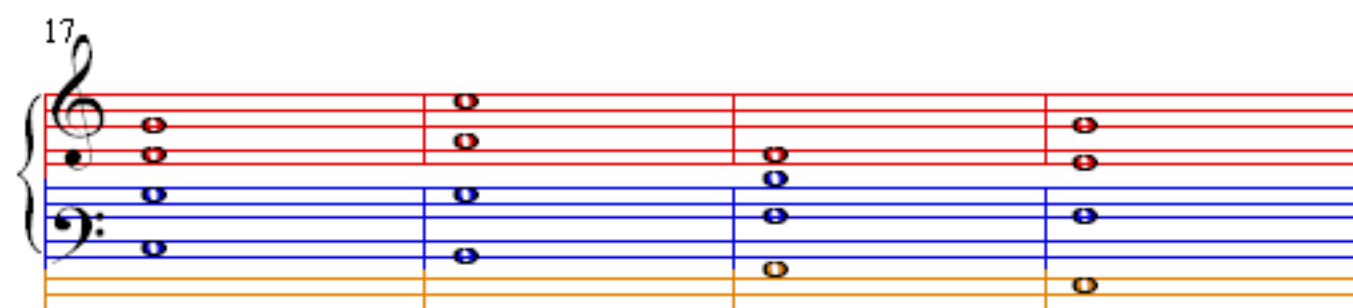
Measures 5-8 of the Canon in D. The first staff (treble clef) is empty in measures 5-7, and contains a whole note D5 in measure 8. The second staff (bass clef) contains a whole note chord of D3, F#3, and A3 in measures 5-7, and a whole note D4 in measure 8. The third staff (bass clef) contains a whole note D2 in measures 5-7, and a whole note D3 in measure 8.

9

Measures 9-12 of the Canon in D. The first staff (treble clef) contains a quarter note D4 in measures 9-10, and a quarter note D5 in measures 11-12. The second staff (bass clef) contains a quarter note D3 in measures 9-10, and a quarter note D4 in measures 11-12. The third staff (bass clef) contains a whole note D2 in measures 9-10, and a whole note D3 in measures 11-12.

13

Measures 13-16 of the Canon in D. The first staff (treble clef) contains a quarter note D4 in measures 13-14, and a quarter note D5 in measures 15-16. The second staff (bass clef) contains a quarter note D3 in measures 13-14, and a quarter note D4 in measures 15-16. The third staff (bass clef) contains a whole note D2 in measures 13-14, and a whole note D3 in measures 15-16.



33

System 33: Treble clef with two whole notes (F4, C5) and two whole notes (F4, C5). Bass clef with two whole notes (F3, C4) and two whole notes (F3, C4). The system is divided into four measures. The first two measures have a whole note in the treble and a whole note in the bass. The last two measures have a whole note in the treble and a whole note in the bass. The notes are colored red in the treble and blue in the bass.

37

System 37: Treble clef with two whole notes (F4, C5) and two whole notes (F4, C5). Bass clef with two whole notes (F3, C4) and two whole notes (F3, C4). The system is divided into four measures. The first two measures have a whole note in the treble and a whole note in the bass. The last two measures have a whole note in the treble and a whole note in the bass. The notes are colored red in the treble and blue in the bass.

41

System 41: Treble clef with a sequence of eighth notes (F4, G4, A4, B4, C5, B4, A4, G4, F4). Bass clef with a sequence of eighth notes (F3, G3, A3, B3, C4, B3, A3, G3, F3). The system is divided into four measures. The first two measures have a sequence of eighth notes in the treble and a sequence of eighth notes in the bass. The last two measures have a sequence of eighth notes in the treble and a sequence of eighth notes in the bass. The notes are colored red in the treble and blue in the bass.

45

System 45: Treble clef with a sequence of eighth notes (F4, G4, A4, B4, C5, B4, A4, G4, F4). Bass clef with a sequence of eighth notes (F3, G3, A3, B3, C4, B3, A3, G3, F3). The system is divided into four measures. The first two measures have a sequence of eighth notes in the treble and a sequence of eighth notes in the bass. The last two measures have a sequence of eighth notes in the treble and a sequence of eighth notes in the bass. The notes are colored red in the treble and blue in the bass.

49

53

57

61