

I Don't Want to Miss a Thing

Masics Diase Warrea

$\bullet = 62$

A musical score for the song 'The Rose Tree'. The score is written for a piano, with a treble clef on the top staff and a bass clef on the bottom staff. The top staff is red and contains the melody, while the bottom staff is blue and contains the accompaniment. The melody is written in a key with one flat (B-flat) and a 4/4 time signature. The accompaniment is written in a key with one flat (B-flat) and a 4/4 time signature. The score is divided into two systems by a vertical line. The first system contains the first two measures of the melody and the first two measures of the accompaniment. The second system contains the next two measures of the melody and the next two measures of the accompaniment. The melody is written in a key with one flat (B-flat) and a 4/4 time signature. The accompaniment is written in a key with one flat (B-flat) and a 4/4 time signature. The score is divided into two systems by a vertical line. The first system contains the first two measures of the melody and the first two measures of the accompaniment. The second system contains the next two measures of the melody and the next two measures of the accompaniment.

A musical score for the song 'The Rose Tree'. The score is written for a piano, with a treble clef on the top staff and a bass clef on the bottom staff. The top staff contains the melody, which is written in a key with one flat (B-flat major or D minor). The melody is composed of eighth and sixteenth notes, with some notes beamed together. The bottom staff contains the accompaniment, which is written in a key with one flat (B-flat major or D minor). The accompaniment is composed of chords and single notes, with some notes beamed together. The score is divided into three measures by vertical bar lines. The first measure contains the first two lines of the melody and the first two lines of the accompaniment. The second measure contains the next two lines of the melody and the next two lines of the accompaniment. The third measure contains the final line of the melody and the final line of the accompaniment. The score is written in a standard musical notation style, with notes and rests clearly visible. The background is white, and the staff lines are black. The notes are colored in various shades of blue and green. The score is titled 'The Rose Tree' in a large, bold, black font at the top left. The lyrics 'The Rose Tree' are written in a smaller, black font below the title. The lyrics are written in a simple, sans-serif font. The lyrics are written in a single line, with the words 'The', 'Rose', 'Tree' on the first line, 'The', 'Rose', 'Tree' on the second line, and 'The', 'Rose', 'Tree' on the third line. The lyrics are written in a single line, with the words 'The', 'Rose', 'Tree' on the first line, 'The', 'Rose', 'Tree' on the second line, and 'The', 'Rose', 'Tree' on the third line. The lyrics are written in a single line, with the words 'The', 'Rose', 'Tree' on the first line, 'The', 'Rose', 'Tree' on the second line, and 'The', 'Rose', 'Tree' on the third line.

10

The musical score for Example 10 is presented in a piano arrangement. It consists of a treble staff and a bass staff. The treble staff is divided into two sections: the first section has a green staff line and a red staff line, and the second section has a green staff line and a red staff line. The bass staff is divided into two sections: the first section has a blue staff line and a red staff line, and the second section has a blue staff line and a red staff line. The music is in 4/4 time and features a sequence of chords and melodic lines. The first section of the treble staff contains a sequence of chords, while the second section contains a sequence of melodic lines. The bass staff contains a sequence of chords throughout.

13

Measures 13-15. Treble clef has a green line. Bass clef has blue lines. Notes are red and blue.

16

Measures 16-18. Treble clef has a green line. Bass clef has blue lines. Notes are red and blue.

19

Measures 19-21. Treble clef has a green line. Bass clef has blue lines. Notes are red and blue.

22

Measures 22-24. Treble clef has a green line. Bass clef has blue lines. Notes are red and blue.

25

Measures 25-27. Treble clef has green notes, bass clef has blue notes. Measure 25 has a grey note in the treble. Measure 27 has a fermata in the bass.

28

Measures 28-30. Treble clef has green notes, bass clef has blue notes. Measure 28 has a fermata in the bass.

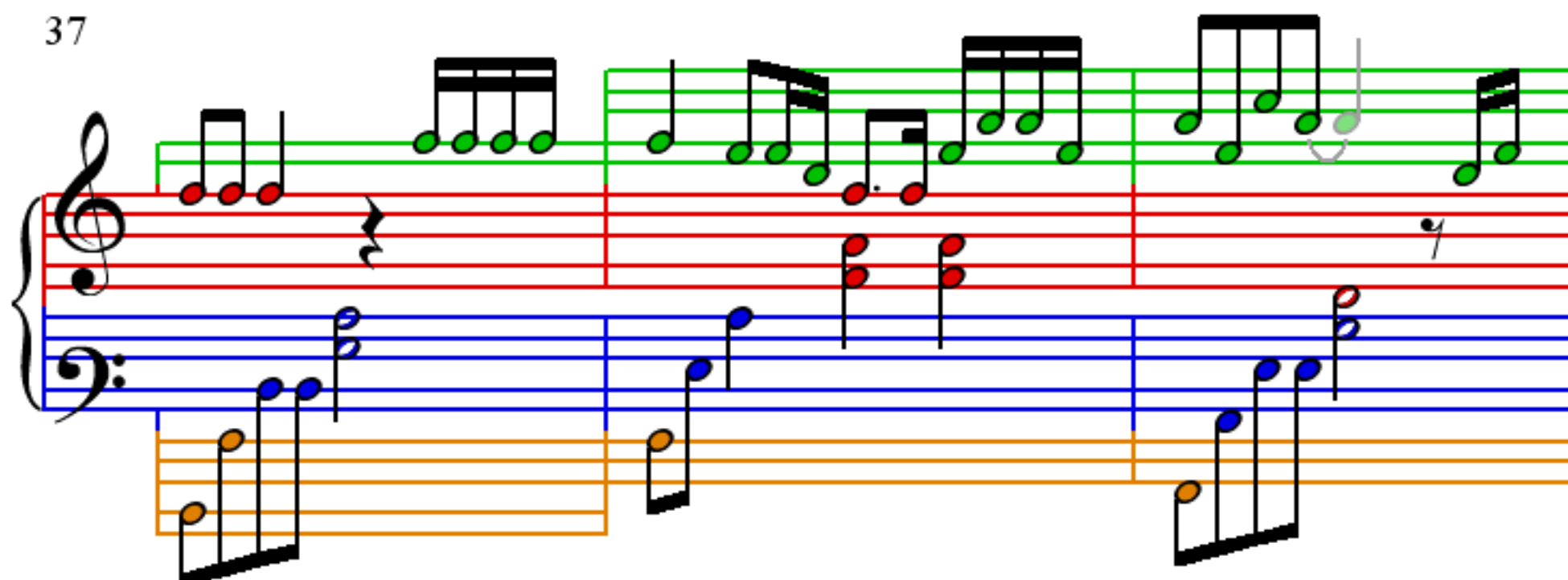
31

Measures 31-33. Treble clef has green notes, bass clef has blue notes. Measure 31 has a fermata in the bass. Measure 33 has a 2/4 time signature change.

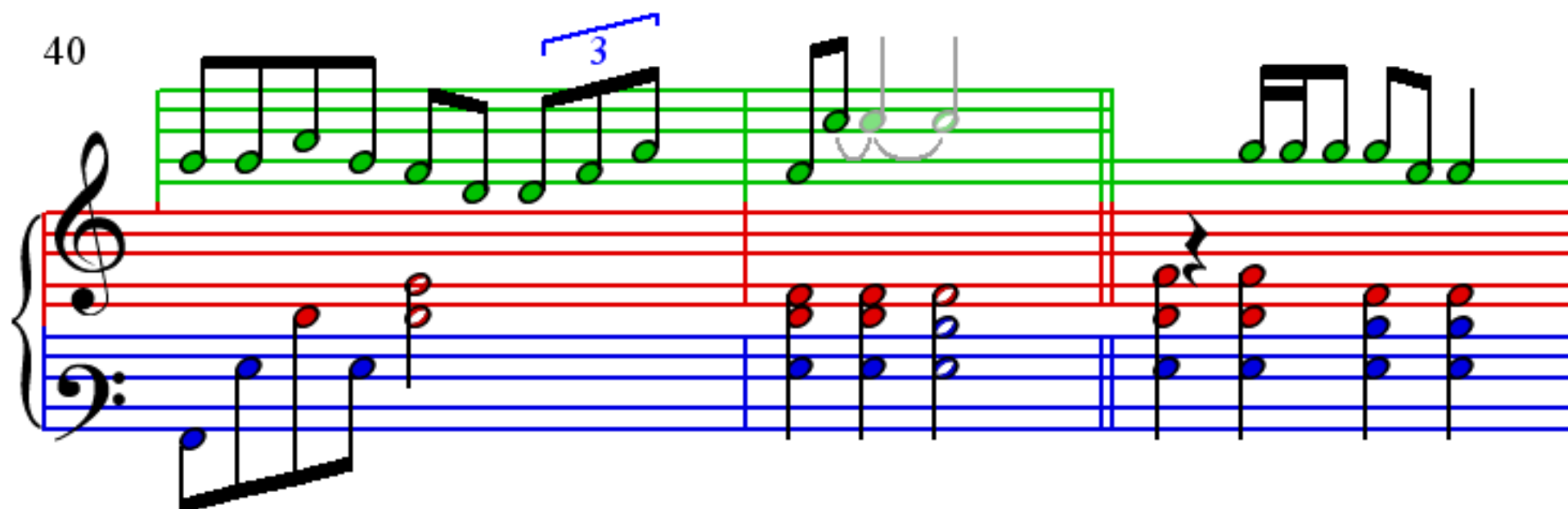
34

Measures 34-36. Treble clef has green notes, bass clef has blue notes. Measure 34 has a 4/4 time signature change. Measure 36 has an orange note in the bass.

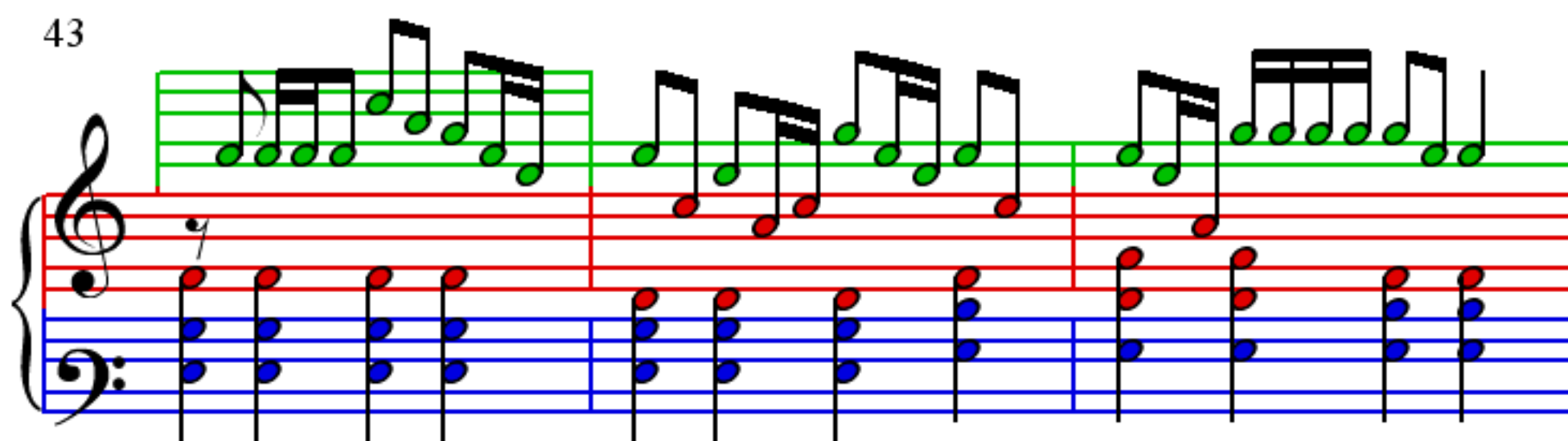
37



40



43



46

