

# Maple Leaf Rag

Scott Joplin

♩ = 280

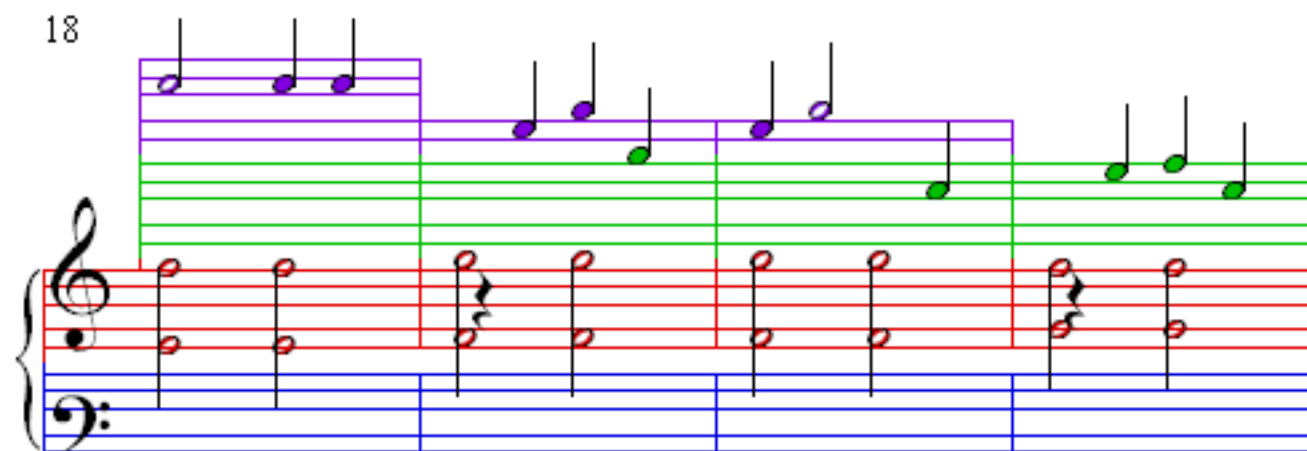
The image displays the first 14 measures of the piano introduction to 'Maple Leaf Rag' by Scott Joplin. The music is written in 4/4 time with a tempo of 280 beats per minute. The score is presented in four systems, each with a grand staff (treble and bass clefs). The first three systems (measures 1-10) feature a treble staff with a green staff line and a bass staff with a blue staff line. The fourth system (measures 11-14) features a treble staff with a purple staff line and a bass staff with a blue staff line. The melody in the treble staff is primarily composed of eighth and sixteenth notes, with some rests. The bass staff provides a steady accompaniment of eighth notes. The key signature is one sharp (F#), and the time signature is 4/4.

6

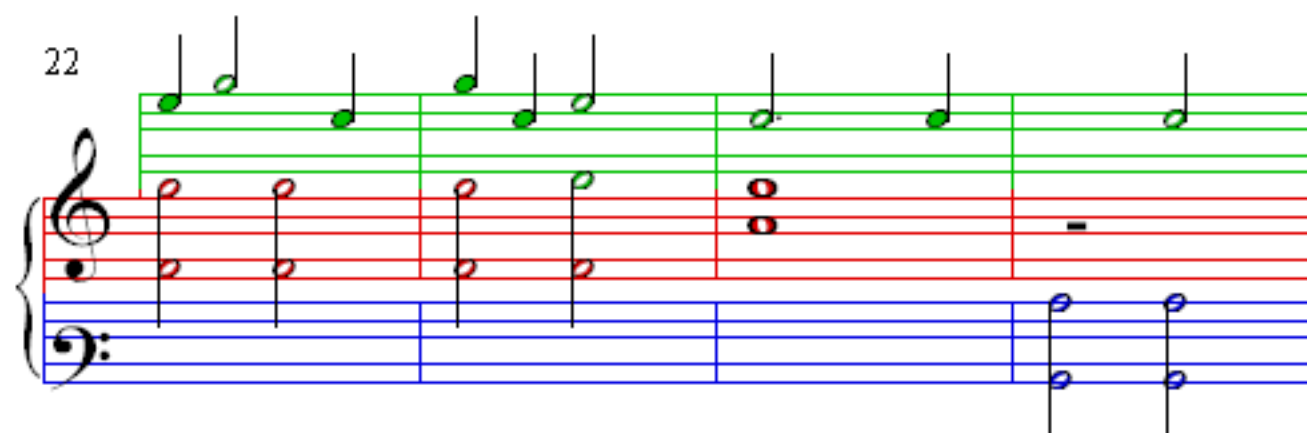
10

14

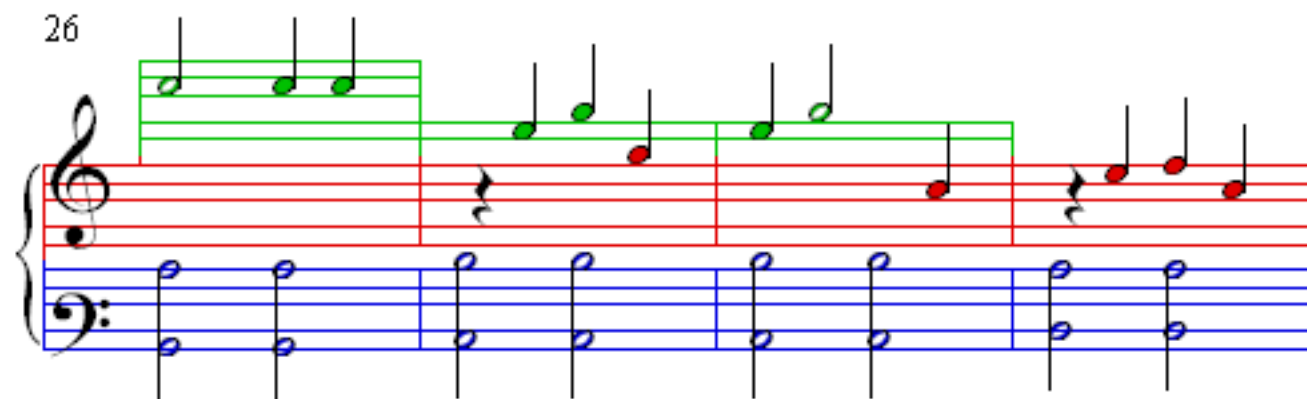
18



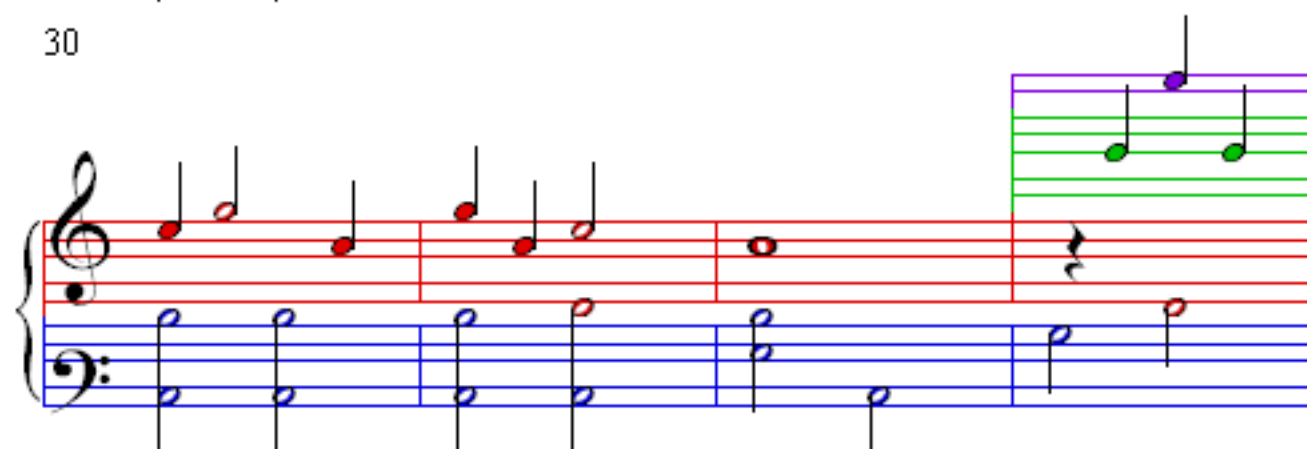
22



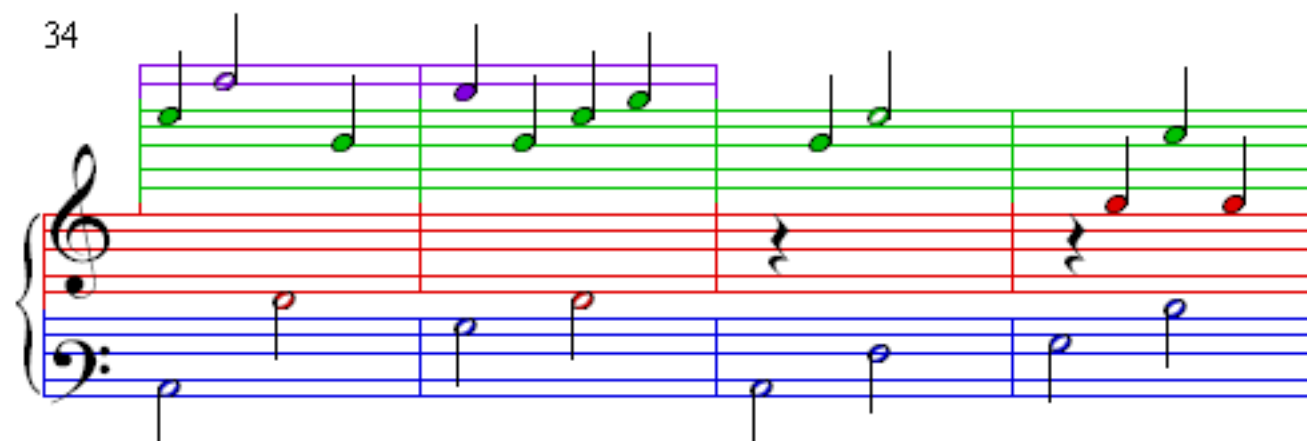
26



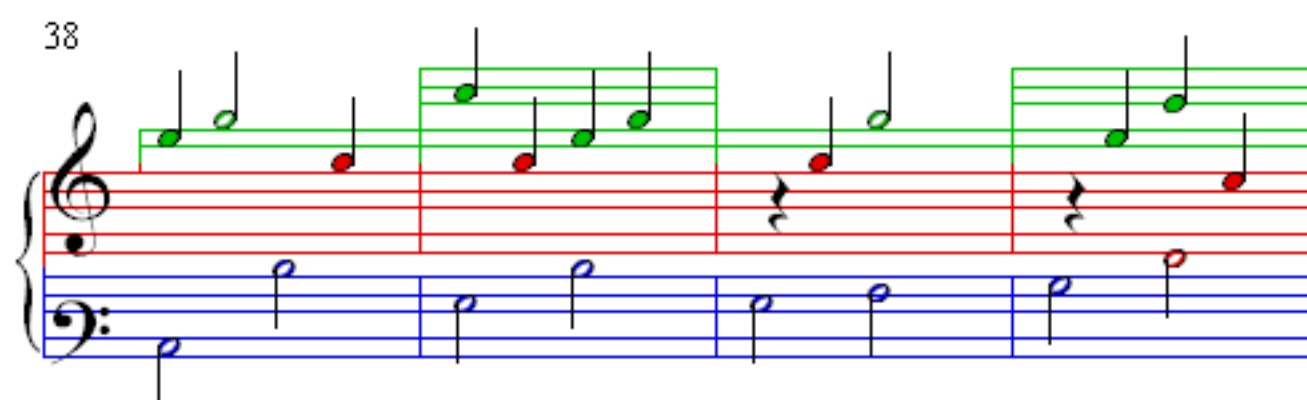
30



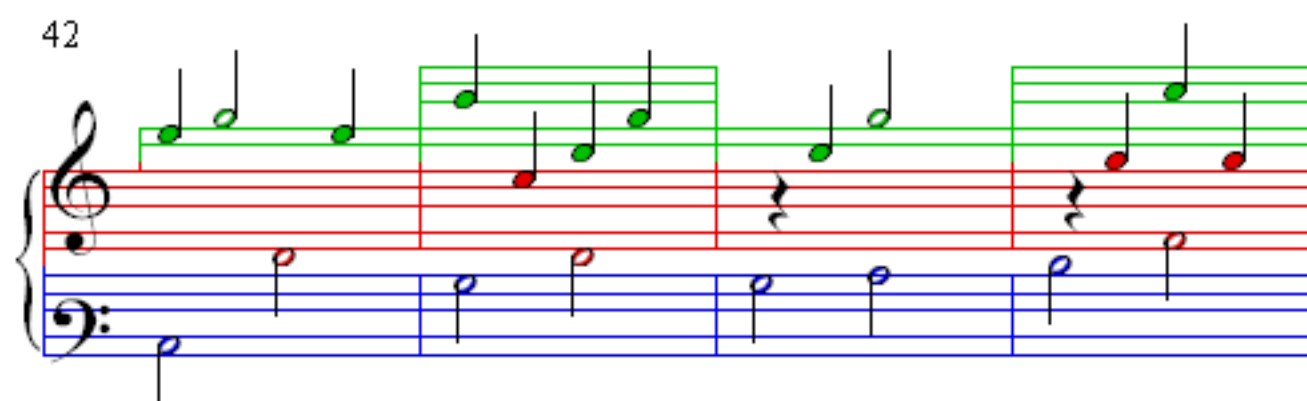
34



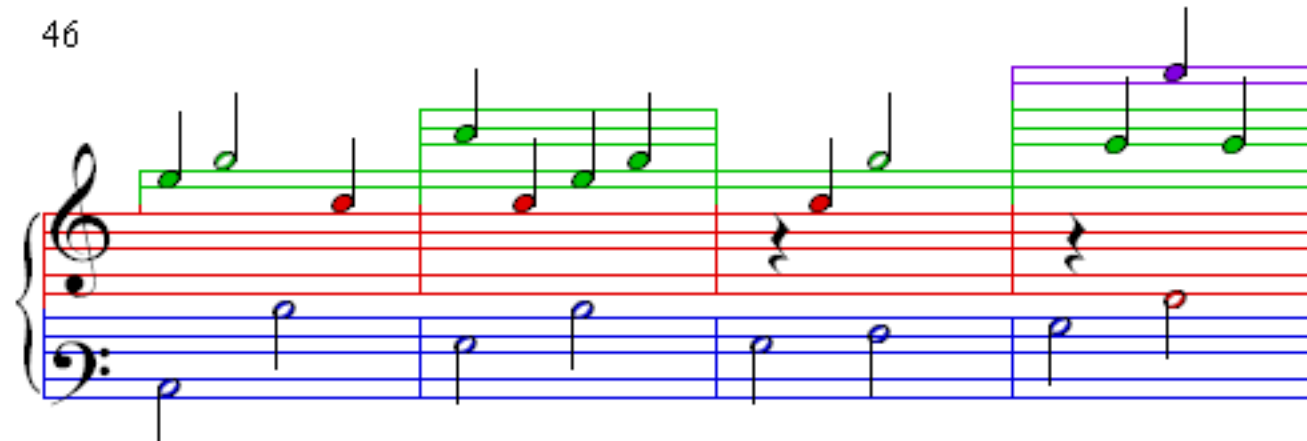
38



42



46



50

Measures 50-53 of the Maple Leaf Rag. The right hand (treble clef) features a melody with green and red notes, while the left hand (bass clef) provides a bass line with blue notes. The music is in 2/4 time and includes rests in the right hand for measures 52 and 53.

54

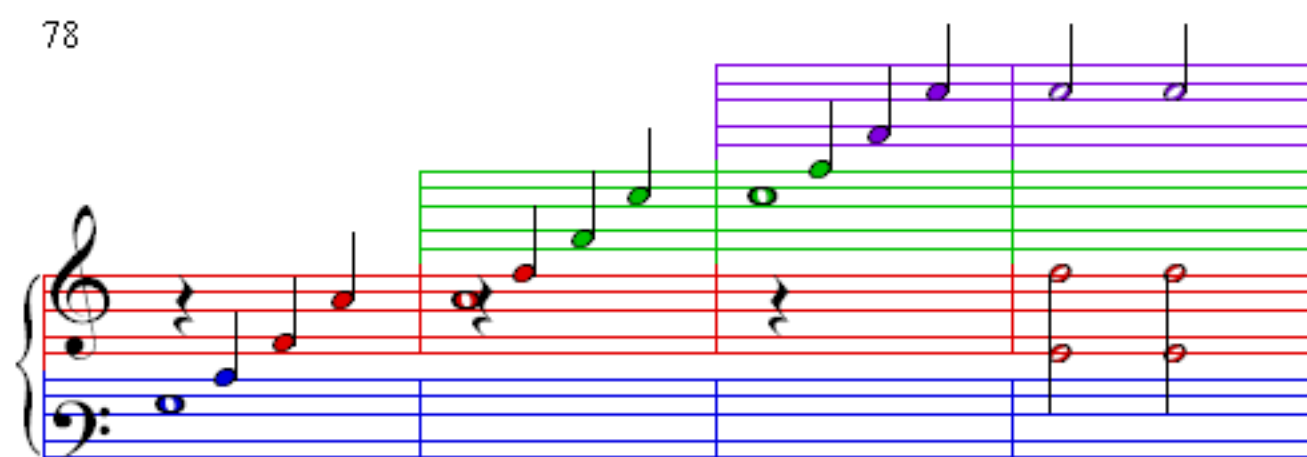
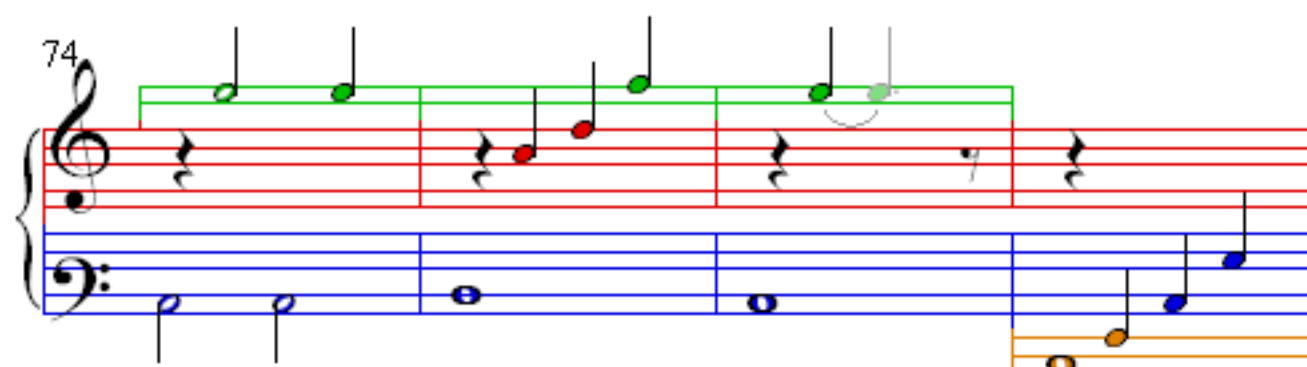
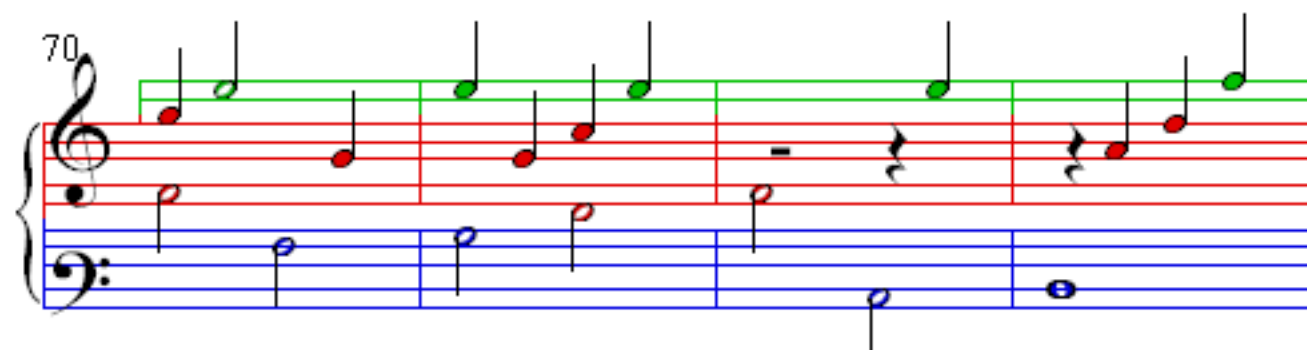
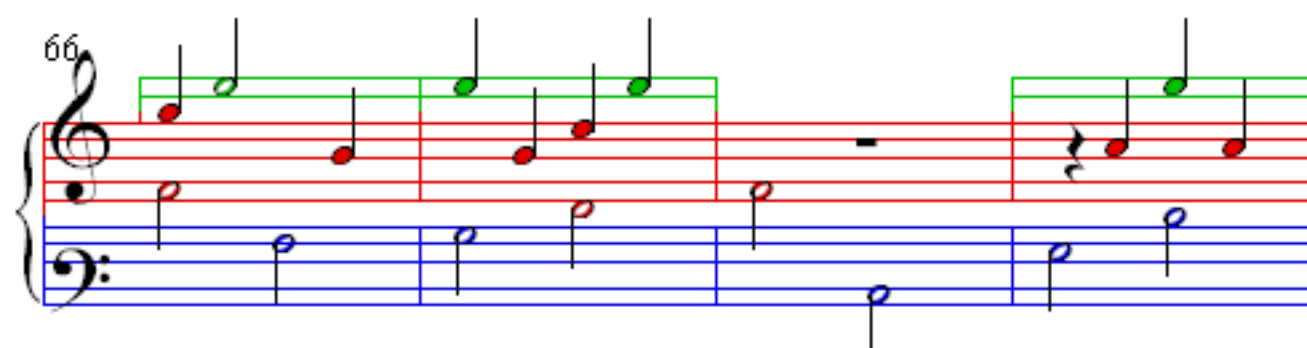
Measures 54-57 of the Maple Leaf Rag. The right hand (treble clef) continues the melody with green and red notes, and the left hand (bass clef) continues the bass line with blue notes. The music is in 2/4 time and includes rests in the right hand for measures 56 and 57.

58

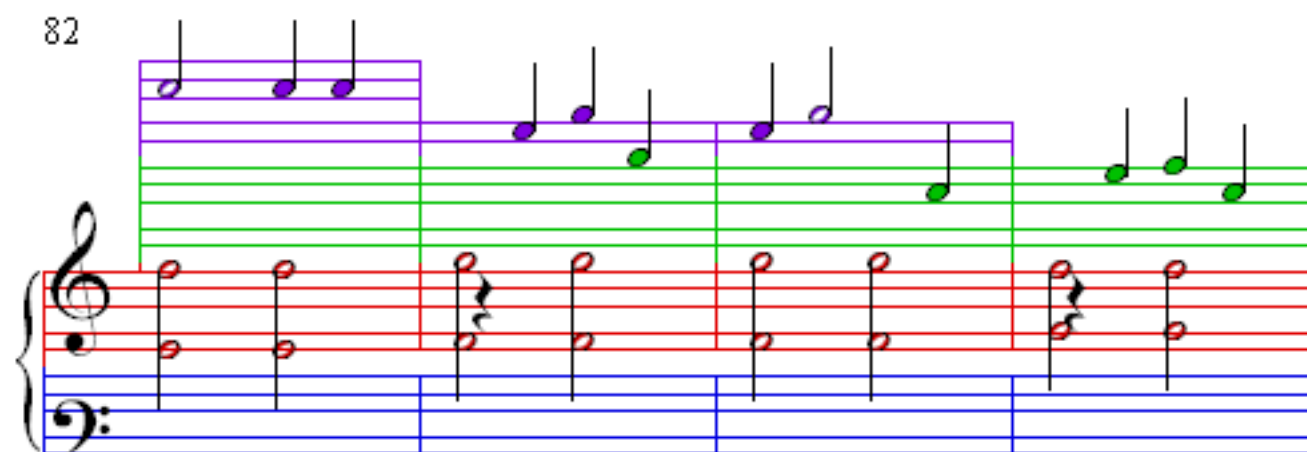
Measures 58-61 of the Maple Leaf Rag. The right hand (treble clef) continues the melody with green and red notes, and the left hand (bass clef) continues the bass line with blue notes. The music is in 2/4 time and includes rests in the right hand for measures 59 and 60.

62

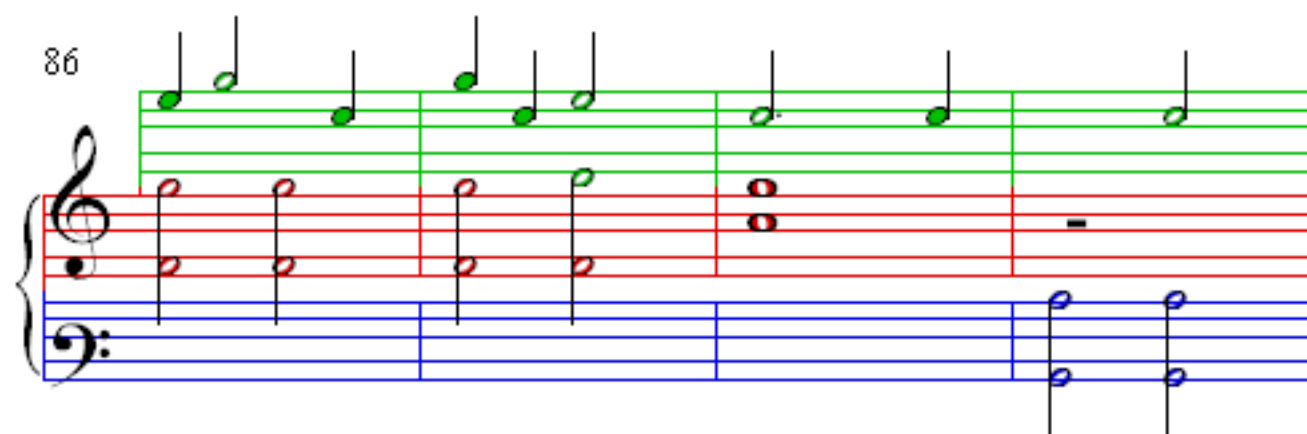
Measures 62-65 of the Maple Leaf Rag. The right hand (treble clef) continues the melody with green and red notes, and the left hand (bass clef) continues the bass line with blue notes. The music is in 2/4 time and includes rests in the right hand for measures 63 and 64. A double bar line is present at the end of measure 65.



82



86



90

