

Pierre's Lullaby

Brad White & Pierre Grill

$\text{♩} = 70$

1

Measures 1 and 2 of the piece. The treble clef staff has a key signature of one flat (B-flat) and a 4/4 time signature. The melody consists of quarter and eighth notes, with some notes highlighted in green. The bass clef staff features a simple bass line with blue notes. The staves are color-coded with green, red, and blue lines.

3

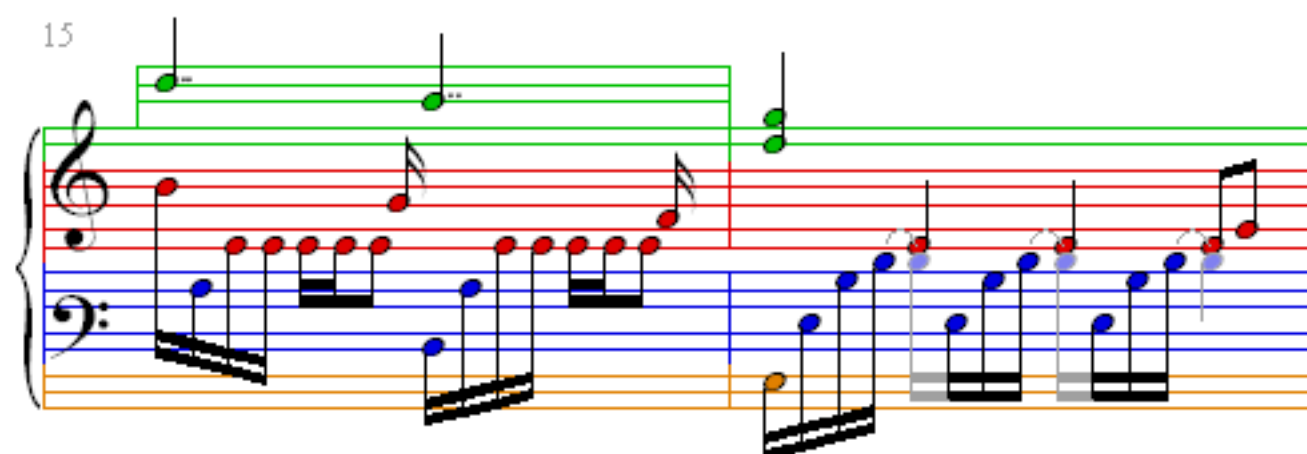
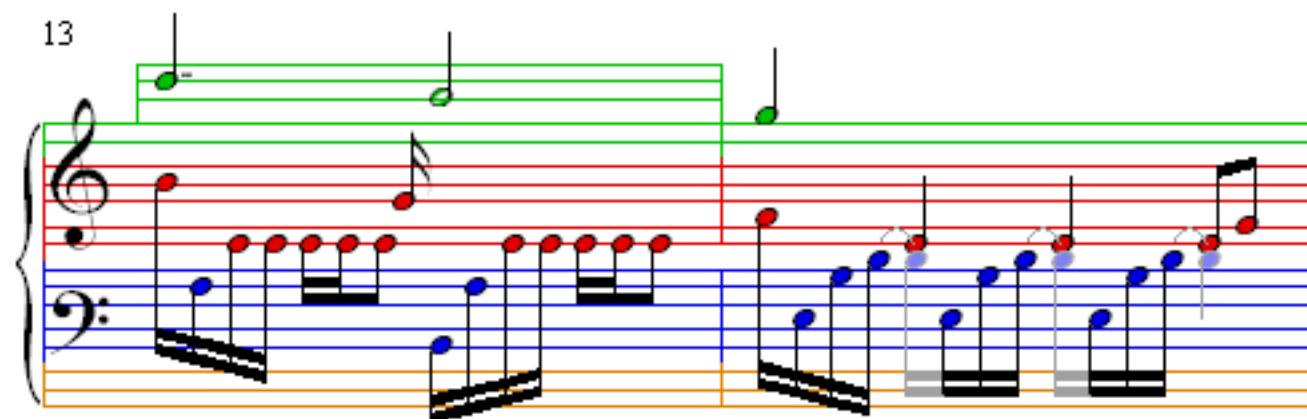
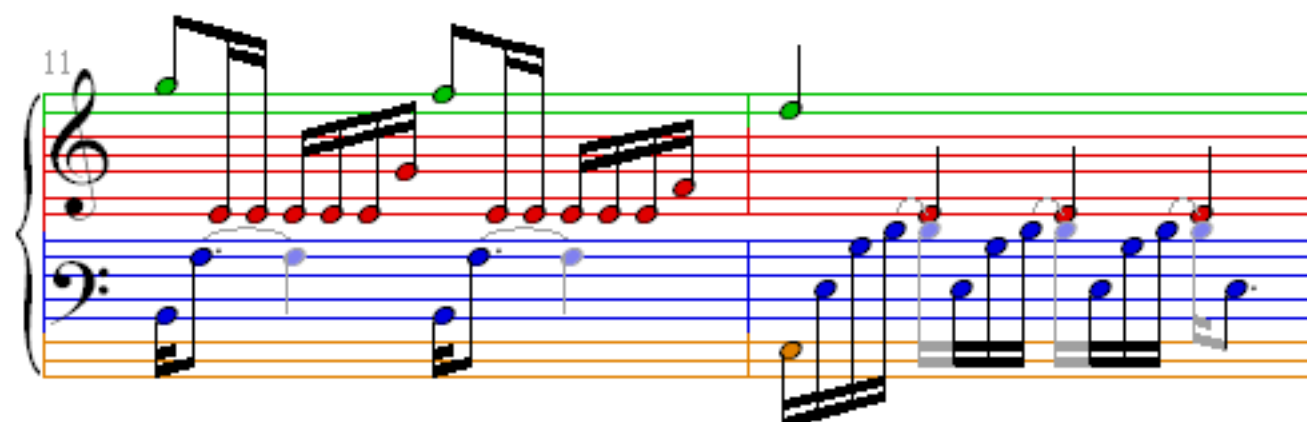
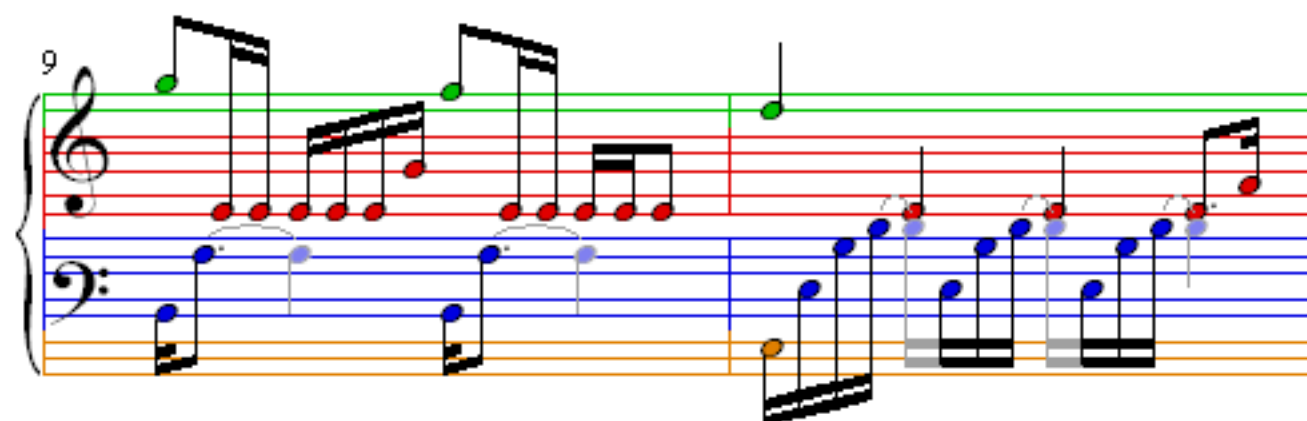
Measures 3 and 4. Measure 3 continues the melody from measure 2. Measure 4 features a more complex bass line with blue notes and some notes highlighted in orange. The staves are color-coded with green, red, and blue lines.

5

Measures 5 and 6. Measure 5 continues the melody from measure 4. Measure 6 features a more complex bass line with blue notes and some notes highlighted in orange. The staves are color-coded with green, red, and blue lines.

7

Measures 7 and 8. Measure 7 continues the melody from measure 6. Measure 8 features a more complex bass line with blue notes and some notes highlighted in orange. The staves are color-coded with green, red, and blue lines.



17

Measures 17 and 18 of the piece. The right hand (treble clef) features a melody with eighth and sixteenth notes, accented with a black wedge. The left hand (bass clef) provides a bass line with eighth and sixteenth notes. The music is color-coded: purple for the right hand melody, green for the right hand accompaniment, red for the left hand melody, blue for the left hand accompaniment, and orange for the bass line. The background is divided into horizontal bands of purple, green, red, blue, and orange.

19

Measures 19 and 20 of the piece. The right hand (treble clef) continues the melody with eighth and sixteenth notes, accented with a black wedge. The left hand (bass clef) provides a bass line with eighth and sixteenth notes. The music is color-coded: purple for the right hand melody, green for the right hand accompaniment, red for the left hand melody, blue for the left hand accompaniment, and orange for the bass line. The background is divided into horizontal bands of purple, green, red, blue, and orange.

21

Measures 21 and 22 of the piece. The right hand (treble clef) continues the melody with eighth and sixteenth notes, accented with a black wedge. The left hand (bass clef) provides a bass line with eighth and sixteenth notes. The music is color-coded: purple for the right hand melody, green for the right hand accompaniment, red for the left hand melody, blue for the left hand accompaniment, and orange for the bass line. The background is divided into horizontal bands of purple, green, red, blue, and orange.

23

Handwritten musical notation for measures 23 and 24. The score is written on a grand staff with treble and bass clefs. The treble staff has a purple key signature and contains eighth and sixteenth notes, some with beams. The bass staff contains eighth and sixteenth notes, some with beams. The notes are color-coded: purple, green, red, blue, and orange. The background is divided into four horizontal bands: purple (top), green, red, and orange (bottom).

25

Handwritten musical notation for measures 25 and 26. The score is written on a grand staff with treble and bass clefs. The treble staff has a purple key signature and contains eighth and sixteenth notes, some with beams. The bass staff contains eighth and sixteenth notes, some with beams. The notes are color-coded: purple, green, red, blue, and orange. The background is divided into four horizontal bands: purple (top), green, red, and orange (bottom).

27

Handwritten musical notation for measures 27 and 28. The score is written on a grand staff with treble and bass clefs. The treble staff has a purple key signature and contains eighth and sixteenth notes, some with beams. The bass staff contains eighth and sixteenth notes, some with beams. The notes are color-coded: purple, green, red, blue, and orange. The background is divided into four horizontal bands: purple (top), green, red, and orange (bottom).

29

Handwritten musical notation for measures 29 and 30. The system consists of a grand staff with a treble clef and a bass clef. The treble staff has a green background and contains a series of eighth and sixteenth notes, some with purple and green dots. The bass staff has a blue background and contains a series of eighth and sixteenth notes, some with blue and orange dots. The notes are connected by stems and beams, indicating a continuous melodic line.

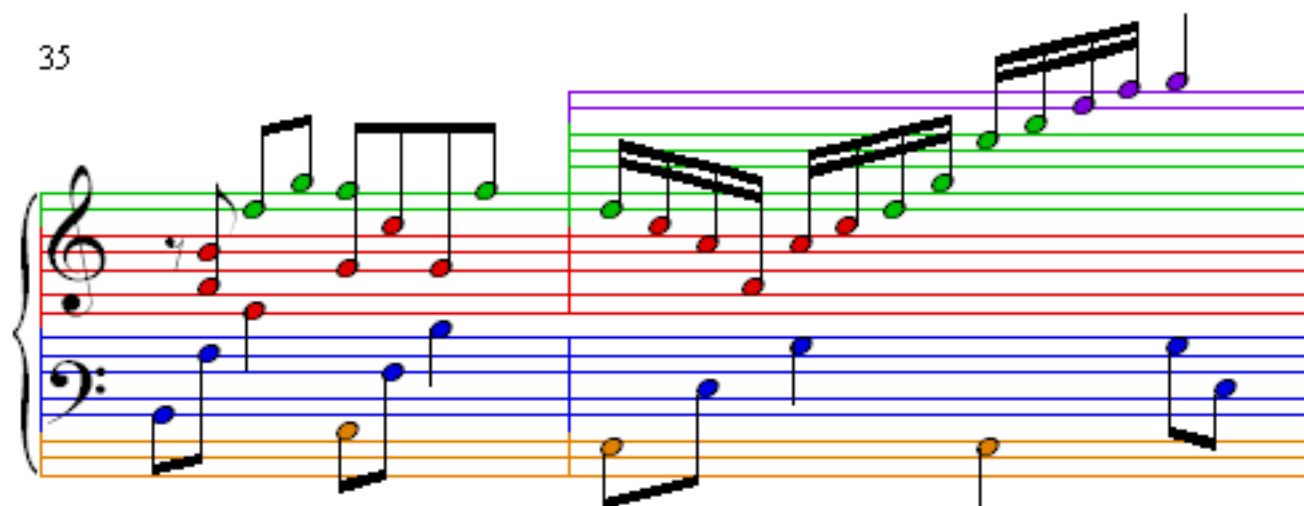
31

Handwritten musical notation for measures 31 and 32. The system consists of a grand staff with a treble clef and a bass clef. The treble staff has a green background and contains a series of eighth and sixteenth notes, some with green and red dots. The bass staff has a blue background and contains a series of eighth and sixteenth notes, some with blue and orange dots. A slur is present over the bass staff in measure 32, indicating a phrase.

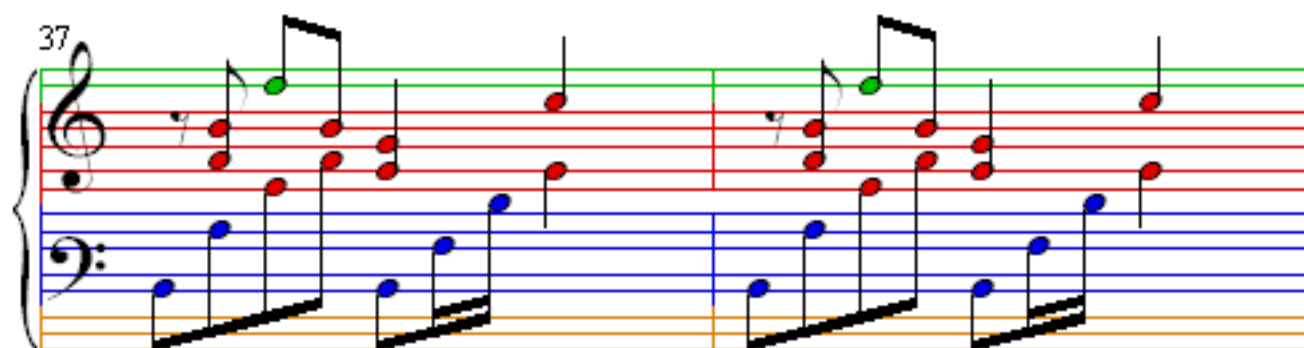
33

Handwritten musical notation for measures 33 and 34. The system consists of a grand staff with a treble clef and a bass clef. The treble staff has a green background and contains a series of eighth and sixteenth notes, some with green and red dots. The bass staff has a blue background and contains a series of eighth and sixteenth notes, some with blue and orange dots. The notes are connected by stems and beams, indicating a continuous melodic line.

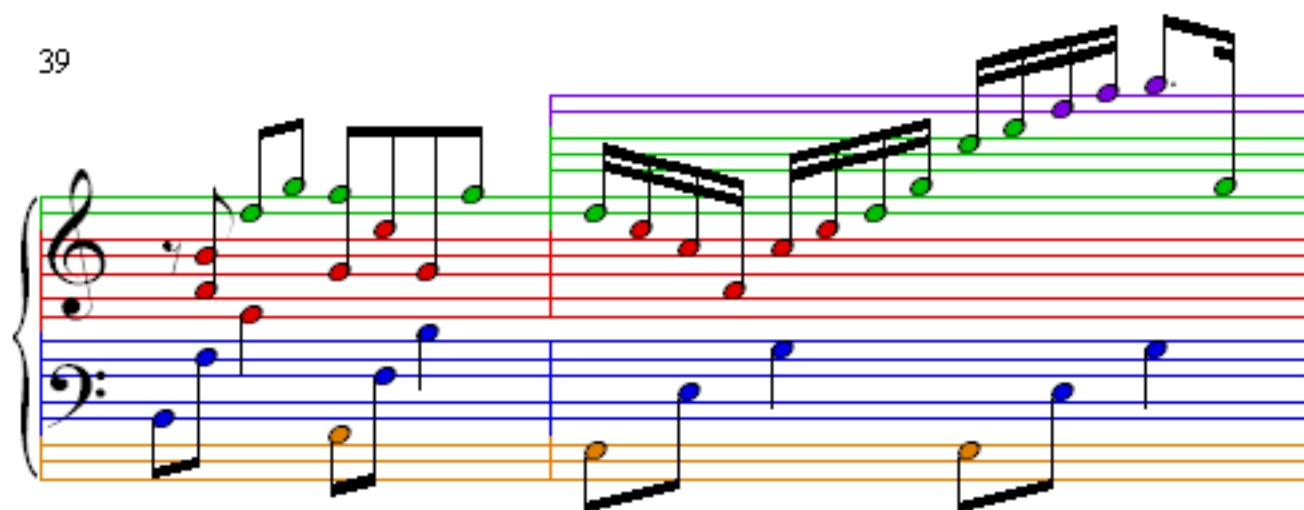
35



37



39



41

Measures 41 and 42 of the musical score. The score is written for piano with a treble and bass staff. The treble staff has a purple key signature and a green treble clef. The bass staff has a blue key signature and a blue bass clef. The music features a series of eighth and sixteenth notes, with some measures containing beamed sixteenth notes. The notes are color-coded: purple for the treble staff and blue for the bass staff. The background of the staves is divided into colored sections: purple for the first staff, green for the second, red for the third, blue for the fourth, and orange for the fifth.

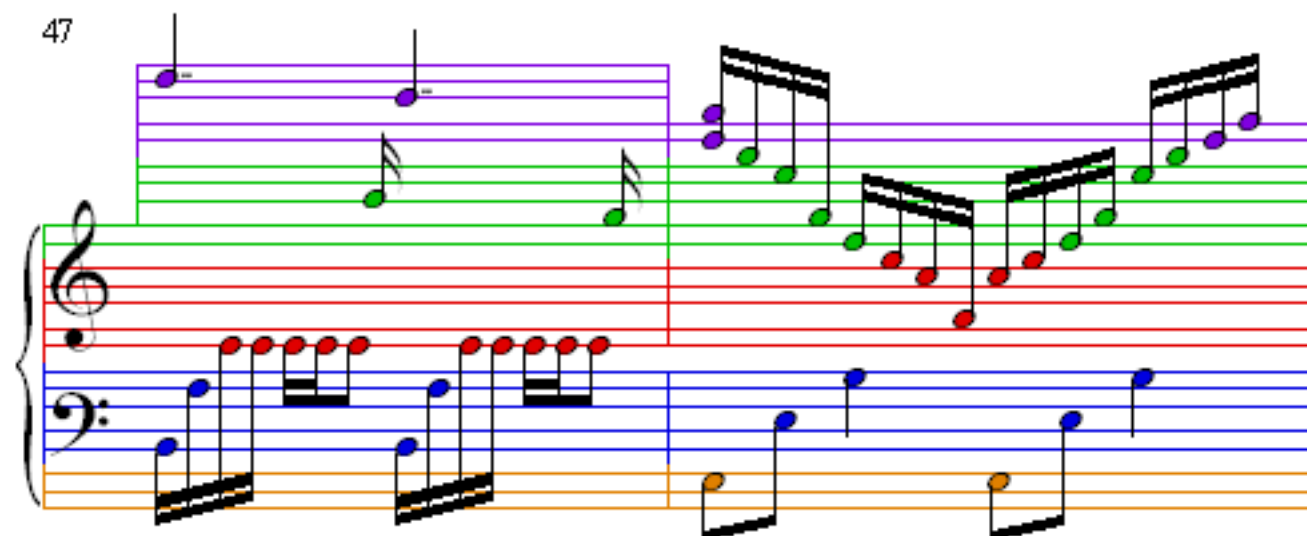
43

Measures 43 and 44 of the musical score. The score is written for piano with a treble and bass staff. The treble staff has a purple key signature and a green treble clef. The bass staff has a blue key signature and a blue bass clef. The music features a series of eighth and sixteenth notes, with some measures containing beamed sixteenth notes. The notes are color-coded: purple for the treble staff and blue for the bass staff. The background of the staves is divided into colored sections: purple for the first staff, green for the second, red for the third, blue for the fourth, and orange for the fifth.

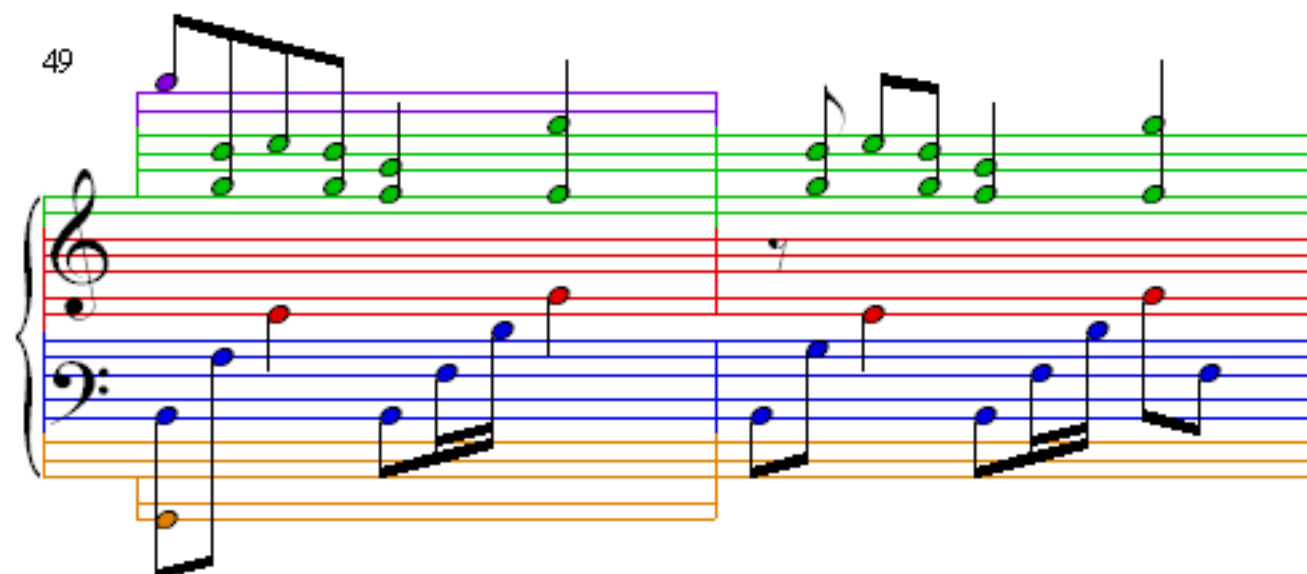
45

Measures 45 and 46 of the musical score. The score is written for piano with a treble and bass staff. The treble staff has a purple key signature and a green treble clef. The bass staff has a blue key signature and a blue bass clef. The music features a series of eighth and sixteenth notes, with some measures containing beamed sixteenth notes. The notes are color-coded: purple for the treble staff and blue for the bass staff. The background of the staves is divided into colored sections: purple for the first staff, green for the second, red for the third, blue for the fourth, and orange for the fifth.

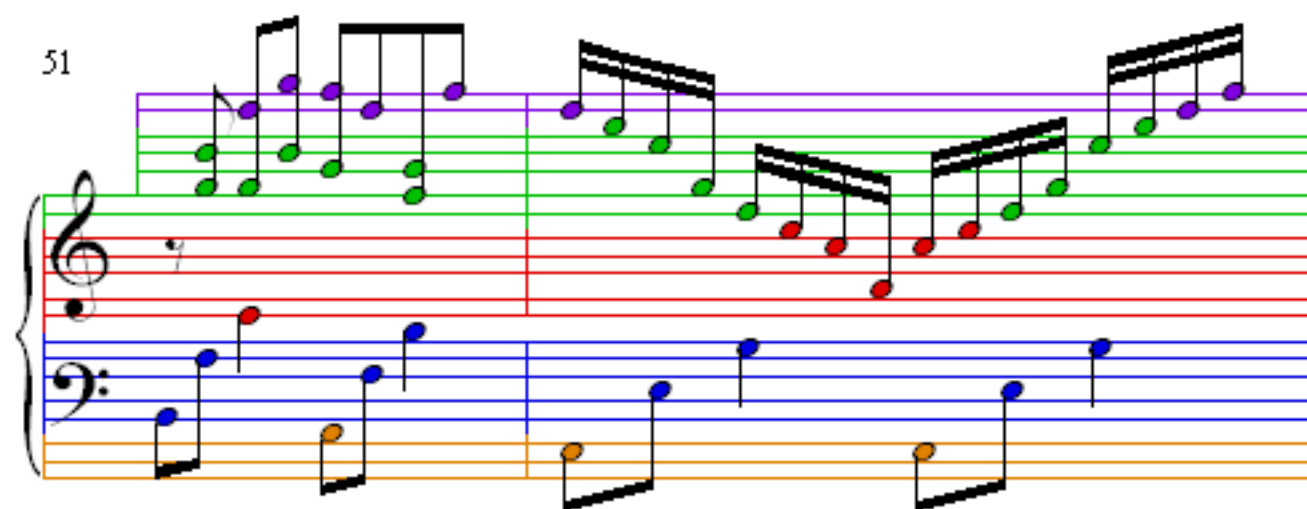
47



49



51



53

Measures 53 and 54 of the piece. Measure 53 features a treble clef staff with a descending eighth-note scale (purple, green, green, green, green) and a bass clef staff with a descending eighth-note scale (blue, blue, blue, blue, blue). Measure 54 continues the treble clef staff with a descending eighth-note scale (purple, green, green, green, green) and a bass clef staff with a descending eighth-note scale (blue, blue, blue, blue, blue). The staves are color-coded: purple for the treble clef, green for the bass clef, and blue for the bass clef.

55

Measures 55 and 56 of the piece. Measure 55 features a treble clef staff with a descending eighth-note scale (purple, green, green, green, green) and a bass clef staff with a descending eighth-note scale (blue, blue, blue, blue, blue). Measure 56 continues the treble clef staff with a descending eighth-note scale (purple, green, green, green, green) and a bass clef staff with a descending eighth-note scale (blue, blue, blue, blue, blue). The staves are color-coded: purple for the treble clef, green for the bass clef, and blue for the bass clef.

57

Measure 57 of the piece. The treble clef staff contains a whole note chord (green, green) and the bass clef staff contains a whole note chord (blue, blue). The staves are color-coded: purple for the treble clef, green for the bass clef, and blue for the bass clef.