

Triste Coeur

Paul de Senneville

1

5 2 3 5

2 3

5

5

9

13

17

This system contains measures 17 through 20. The treble clef staff (top) has a green staff line and a red staff line. The bass clef staff (bottom) has a blue staff line and an orange staff line. The music features a melody in the treble clef staff and a bass line in the bass clef staff. The melody consists of eighth and sixteenth notes, with some notes highlighted in green. The bass line consists of quarter and eighth notes, with some notes highlighted in blue and orange.

21

This system contains measures 21 through 24. The treble clef staff (top) has a green staff line and a red staff line. The bass clef staff (bottom) has a blue staff line and an orange staff line. The music features a melody in the treble clef staff and a bass line in the bass clef staff. The melody consists of eighth and sixteenth notes, with some notes highlighted in green. The bass line consists of quarter and eighth notes, with some notes highlighted in blue and orange.

25

This system contains measures 25 through 28. The treble clef staff (top) has a green staff line and a red staff line. The bass clef staff (bottom) has a blue staff line and an orange staff line. The music features a melody in the treble clef staff and a bass line in the bass clef staff. The melody consists of eighth and sixteenth notes, with some notes highlighted in green. The bass line consists of quarter and eighth notes, with some notes highlighted in blue and orange.

29

This system contains measures 29 through 32. The treble clef staff (top) has a green staff line and a red staff line. The bass clef staff (bottom) has a blue staff line and an orange staff line. The music features a melody in the treble clef staff and a bass line in the bass clef staff. The melody consists of eighth and sixteenth notes, with some notes highlighted in green. The bass line consists of quarter and eighth notes, with some notes highlighted in blue and orange.

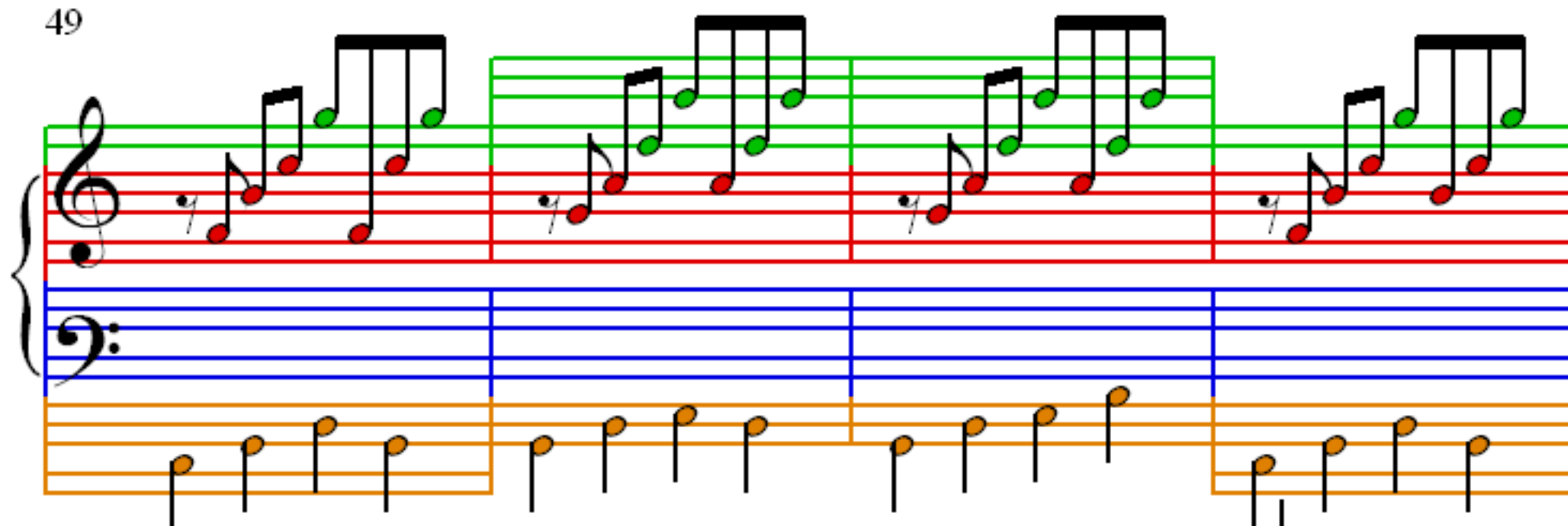
33

37

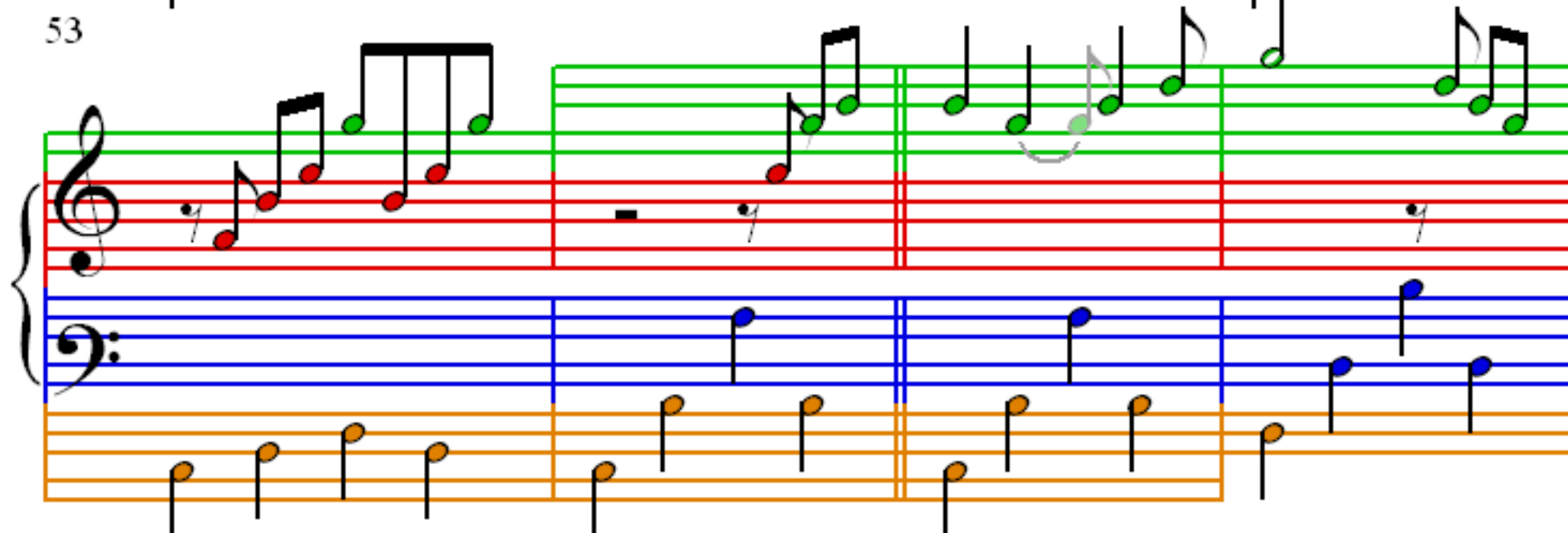
41

45

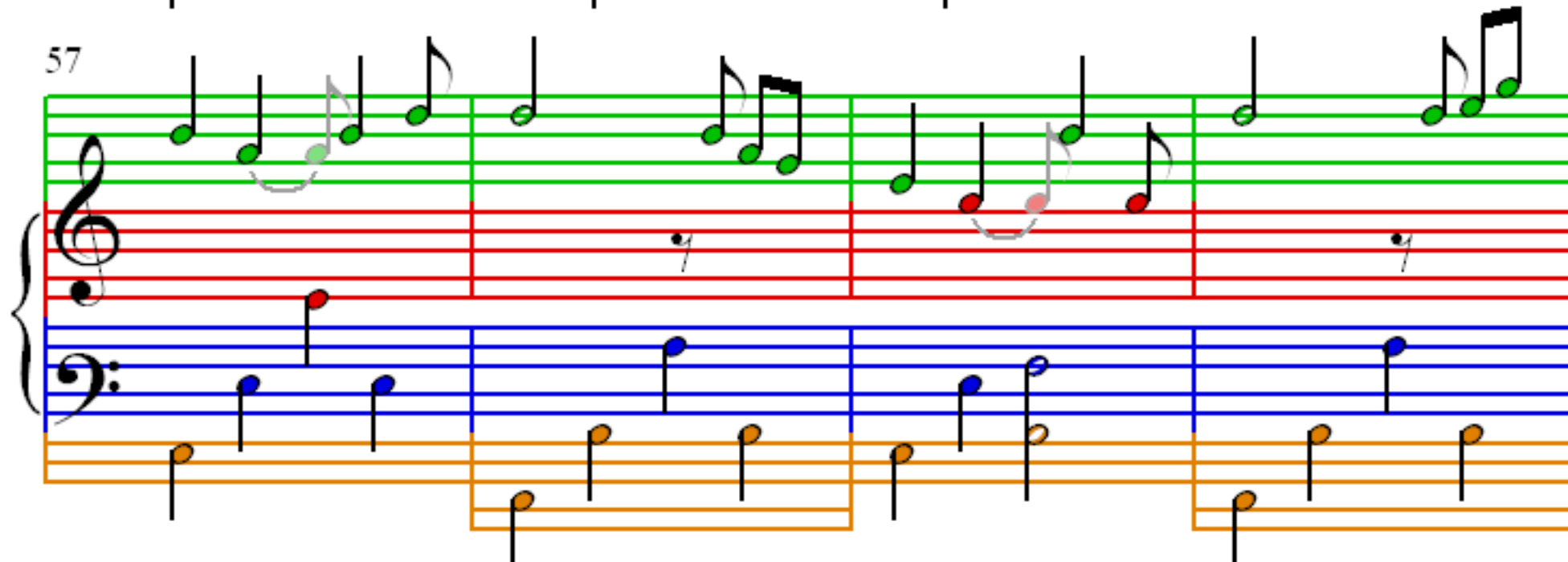
49



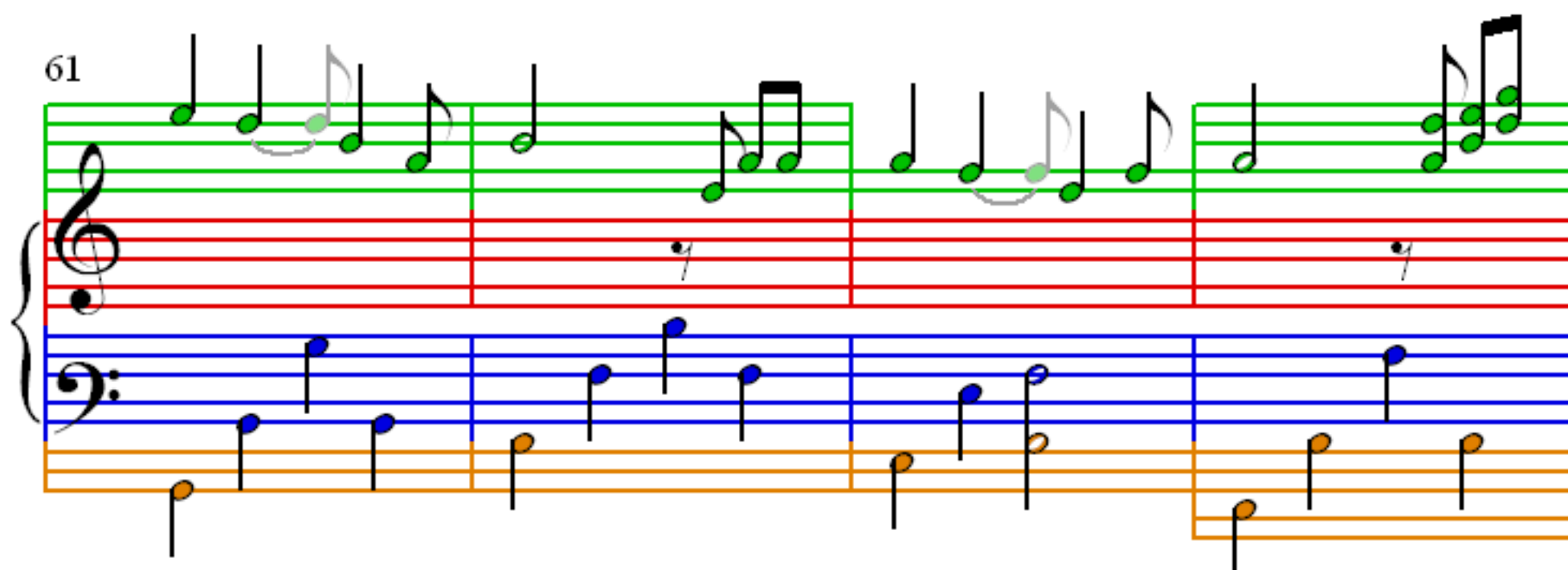
53



57



61



65

7

69

7

73

7

76

76

80

80

84

84