

Le Cygne (The Swan)

Camille Saint-Saens

$\text{♩} = 60$

A musical score for the song 'The Rose Tree'. The score is written for a piano and voice. The piano part is in 3/4 time and consists of a melody in the right hand and a bass line in the left hand. The melody is written on a five-line staff with a treble clef, and the bass line is written on a five-line staff with a bass clef. The melody is in G major and consists of a series of eighth and sixteenth notes. The bass line is in G major and consists of a series of eighth and sixteenth notes. The voice part is written on a five-line staff with a soprano clef. The lyrics are written below the voice staff. The score is divided into two systems. The first system contains the first two measures of the music, and the second system contains the next two measures. The music is in 3/4 time and consists of a series of eighth and sixteenth notes. The melody is in G major and the bass line is in G major. The voice part is in G major and consists of a series of eighth and sixteenth notes. The lyrics are written below the voice staff.

5

The musical score for Example 1 consists of two staves. The upper staff is in treble clef and contains a vocal melody. The lower staff is in bass clef and contains a piano accompaniment. The piano part features a sequence of chords and single notes, while the vocal part has a melody with a repeat sign.

7

Measures 7 and 8 of the piano accompaniment for 'Le Cygne'. The score is written for a grand piano with treble and bass staves. The treble staff has a green background, and the bass staff has a blue background. The right hand plays a melody with notes colored green and purple, with fingerings 4, 5, 5, 4, 5, 4, 5, 4 indicated above. The left hand plays a bass line with notes colored blue and orange, with fingerings 1, 2, 3, 1, 2, 1, 2, 1 indicated below. The music is in 4/4 time.

9

Measures 9 and 10 of the piano accompaniment for 'Le Cygne'. The treble staff has a purple background, and the bass staff has a blue background. The right hand plays a melody with notes colored purple and green, with fingerings 1, 2, 1, 2, 1, 2, 1, 2 indicated above. The left hand plays a bass line with notes colored blue and orange, with fingerings 1, 2, 3, 1, 2, 1, 2, 1 indicated below. The music is in 4/4 time.

11

Measures 11 and 12 of the piano accompaniment for 'Le Cygne'. The treble staff has a purple background, and the bass staff has a blue background. The right hand plays a melody with notes colored purple and green, with fingerings 1, 2, 1, 2, 1, 2, 1, 2 indicated above. The left hand plays a bass line with notes colored blue and orange, with fingerings 1, 2, 3, 1, 2, 1, 2, 1 indicated below. The music is in 4/4 time.

13

Measures 13 and 14 of the piano accompaniment for 'Le Cygne'. The system consists of a grand staff with a treble clef and a bass clef. The treble staff has a green staff line and a red staff line. The bass staff has a blue staff line and an orange staff line. The right hand (treble) plays a melody of quarter notes: G4, A4, B4, C5, D5, E5, F5, G5. The left hand (bass) plays a melody of quarter notes: C3, D3, E3, F3, G3, A3, B3, C4. The notes are color-coded: G (green), A (red), B (blue), C (orange), D (green), E (red), F (blue), G (orange). The right hand has a purple dot above the G5 note in measure 14. The left hand has a purple dot above the C4 note in measure 14.

15

Measures 15 and 16 of the piano accompaniment for 'Le Cygne'. The system consists of a grand staff with a treble clef and a bass clef. The treble staff has a green staff line and a red staff line. The bass staff has a blue staff line and an orange staff line. The right hand (treble) plays a melody of quarter notes: G4, A4, B4, C5, D5, E5, F5, G5. The left hand (bass) plays a melody of quarter notes: C3, D3, E3, F3, G3, A3, B3, C4. The notes are color-coded: G (green), A (red), B (blue), C (orange), D (green), E (red), F (blue), G (orange). The right hand has a purple dot above the G5 note in measure 16. The left hand has a purple dot above the C4 note in measure 16.

17

Measures 17 and 18 of the piano accompaniment for 'Le Cygne'. The system consists of a grand staff with a treble clef and a bass clef. The treble staff has a green staff line and a red staff line. The bass staff has a blue staff line and an orange staff line. The right hand (treble) plays a melody of quarter notes: G4, A4, B4, C5, D5, E5, F5, G5. The left hand (bass) plays a melody of quarter notes: C3, D3, E3, F3, G3, A3, B3, C4. The notes are color-coded: G (green), A (red), B (blue), C (orange), D (green), E (red), F (blue), G (orange). The right hand has a purple dot above the G5 note in measure 18. The left hand has a purple dot above the C4 note in measure 18.

19

Handwritten musical notation for measures 19 and 20. The system consists of three staves: a single treble staff at the top and a grand staff (treble and bass) below. The treble staff has a yellow line and a purple line. The grand staff has a red line, a green line, a blue line, and an orange line. The notation includes various notes, rests, and fingerings (1, 2, 4) in the bass staff. The right hand plays a simple melody in the treble staff.

21

Handwritten musical notation for measures 21 and 22. The system consists of three staves: a single treble staff at the top and a grand staff (treble and bass) below. The treble staff has a yellow line and a purple line. The grand staff has a red line, a green line, a blue line, and an orange line. The notation includes various notes, rests, and fingerings (1, 2, 4) in the bass staff. The right hand plays a simple melody in the treble staff.

23

Handwritten musical notation for measures 23 and 24. The system consists of three staves: a single treble staff at the top and a grand staff (treble and bass) below. The treble staff has a yellow line and a purple line. The grand staff has a red line, a green line, a blue line, and an orange line. The notation includes various notes, rests, and fingerings (1, 2, 3, 4) in the bass staff. The right hand plays a simple melody in the treble staff.

25

Measures 25 and 26 of the piece. The right hand (treble clef) plays a melody on a purple staff, with notes colored green and red. The left hand (bass clef) plays a complex accompaniment on a blue staff, with notes colored blue and orange. The accompaniment features a series of eighth notes and a triplet of eighth notes in measure 25, and a triplet of eighth notes in measure 26. The piece is in 3/4 time, indicated by a '4' over the first measure of measure 25.

27

Measures 27 and 28 of the piece. The right hand (treble clef) plays a melody on a purple staff, with notes colored green and red. The left hand (bass clef) plays a complex accompaniment on a blue staff, with notes colored blue and orange. The accompaniment features a series of eighth notes and a triplet of eighth notes in measure 27, and a triplet of eighth notes in measure 28. The piece is in 3/4 time, indicated by a '4' over the first measure of measure 27.

29

Measures 29 and 30 of the piece. The right hand (treble clef) plays a melody on a purple staff, with notes colored green and red. The left hand (bass clef) plays a complex accompaniment on a blue staff, with notes colored blue and orange. The accompaniment features a series of eighth notes and a triplet of eighth notes in measure 29, and a triplet of eighth notes in measure 30. The piece is in 3/4 time, indicated by a '4' over the first measure of measure 29.

37

Measures 37 and 38 of the piece. The right hand (treble clef) plays a simple melody with half notes. The left hand (bass clef) plays a more complex accompaniment with eighth and sixteenth notes, including some beamed sixteenth notes. The notes are color-coded: purple for the right hand and various colors (green, red, blue, orange) for the left hand.

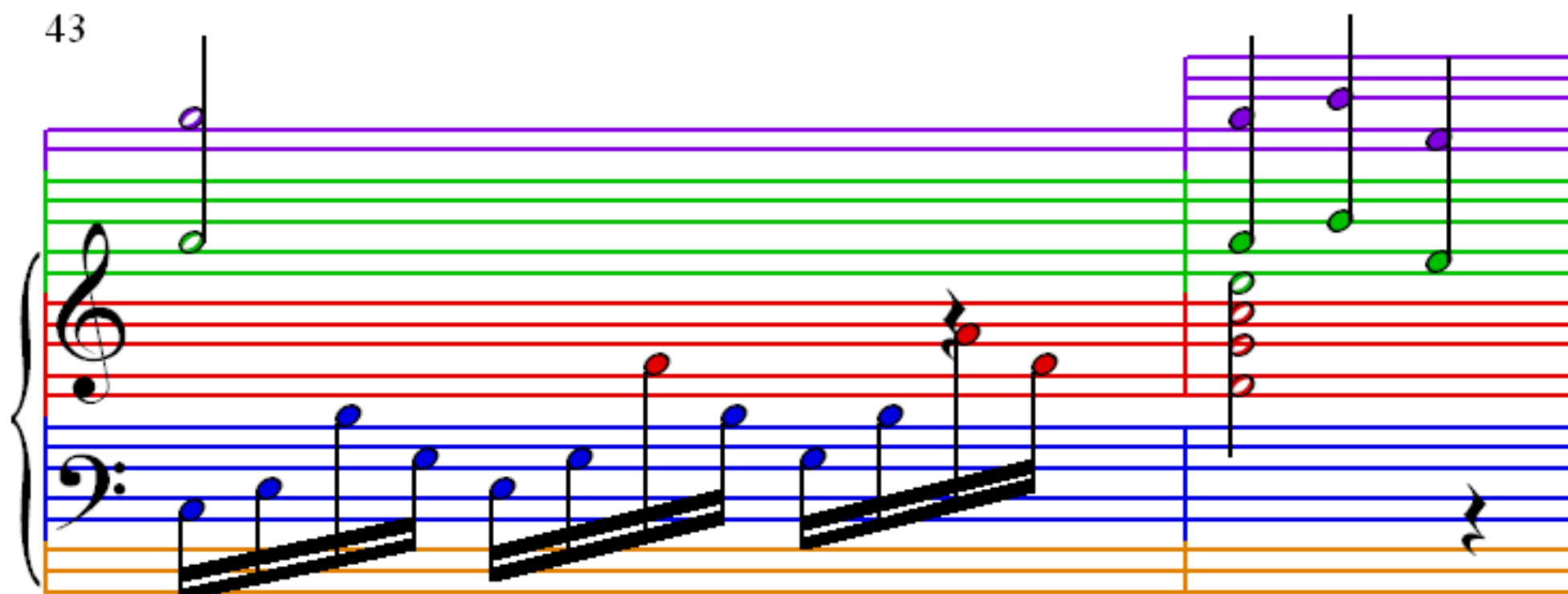
39

Measures 39 and 40. Measure 39 continues the pattern from the previous system. Measure 40 shows a change in the right hand melody, with notes moving to higher positions on the staff. The left hand continues with its rhythmic accompaniment.

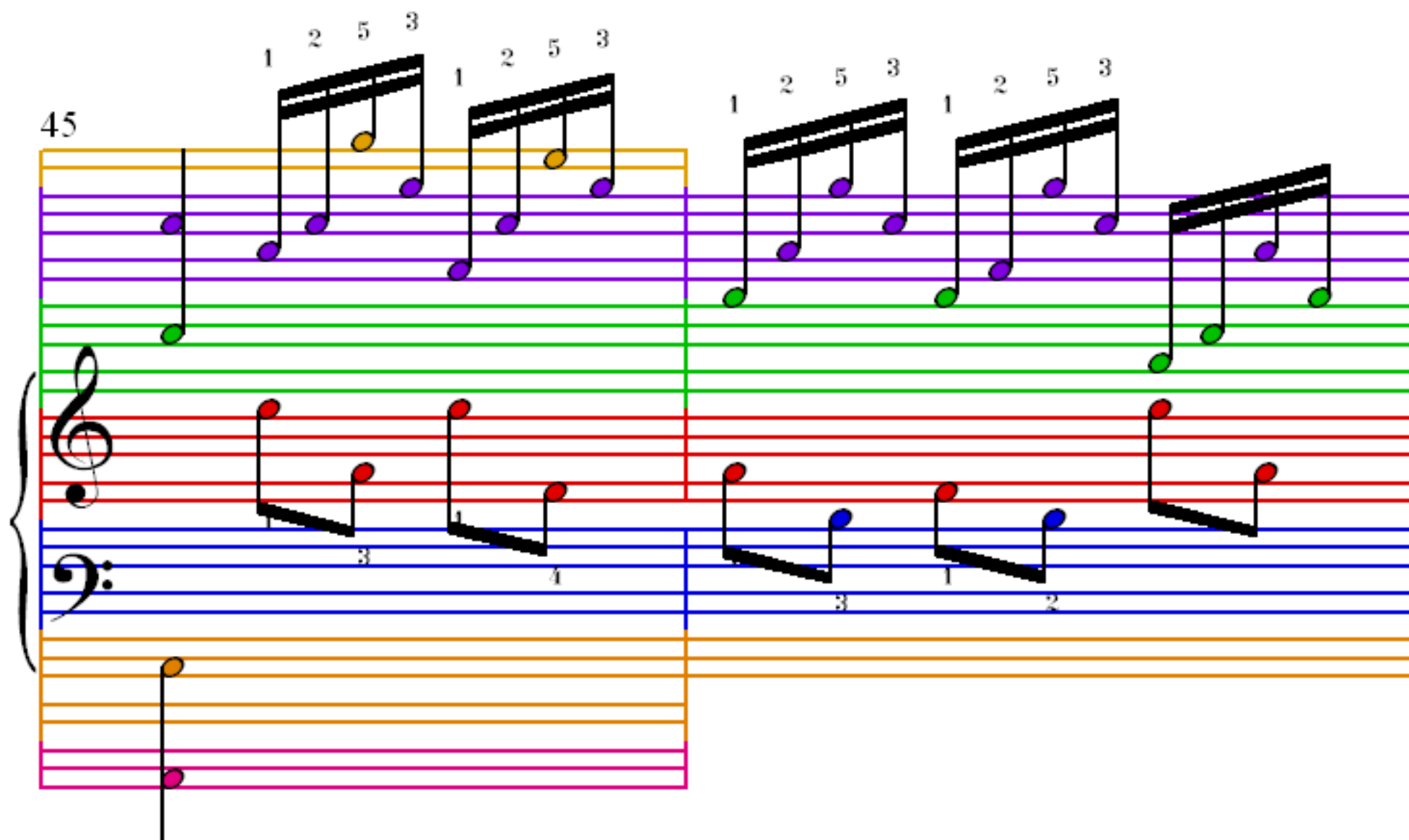
41

Measures 41 and 42. Measure 41 features a more active right hand melody with eighth notes. Measure 42 shows a final change in the right hand, with notes moving to higher positions. The left hand continues with its accompaniment.

43



45



47

