

Circle Dance

N. Von Wim

♩ = 100

1

Measures 1-3 of the piece. The treble clef staff has a key signature of one flat (B-flat) and a 3/4 time signature. The bass clef staff has a key signature of one flat (B-flat). The music is written in a grand staff format. The first measure starts with a treble clef, a key signature of one flat, and a 3/4 time signature. The melody in the treble clef starts on a G4 (green dot) and moves up stepwise. The bass clef has a whole rest in the first measure, followed by a half note G3 (blue dot) and a quarter note F3 (blue dot) in the second measure. The third measure has a whole rest in the bass clef.

4

Measures 4-6 of the piece. The treble clef staff continues the melody from measure 3. The bass clef staff has a whole rest in measure 4, followed by a half note G3 (blue dot) and a quarter note F3 (blue dot) in measure 5. The sixth measure has a whole rest in the bass clef.

7

Measures 7-9 of the piece. The treble clef staff continues the melody. The bass clef staff has a whole rest in measure 7, followed by a half note G3 (blue dot) and a quarter note F3 (blue dot) in measure 8. The ninth measure has a whole rest in the bass clef.

10

Measures 10-12 of the piece. The treble clef staff continues the melody. The bass clef staff has a whole rest in measure 10, followed by a half note G3 (blue dot) and a quarter note F3 (blue dot) in measure 11. The twelfth measure has a whole rest in the bass clef.

13

Measures 13-15. Treble clef: Measure 13 has four eighth notes (G4, A4, B4, C5). Measure 14 has four eighth notes (D5, C5, B4, A4). Measure 15 has a dotted quarter note (G4), an eighth note (F4), and a quarter note (E4). Bass clef: Measure 13 has two quarter notes (C3, E2). Measure 14 has two quarter notes (D3, F2). Measure 15 has a quarter note (G2) and a dotted half note (C3).

16

Measures 16-18. Treble clef: Measure 16 has a dotted quarter note (D5) and an eighth note (C5). Measure 17 has a dotted quarter note (B4) and an eighth note (A4). Measure 18 has a dotted quarter note (G4) and an eighth note (F4). Bass clef: Measure 16 has a quarter note (D3) and a dotted half note (C3). Measure 17 has a quarter note (E3) and a dotted half note (D3). Measure 18 has a quarter note (F3) and a dotted half note (E3).

19

Measures 19-21. Treble clef: Measure 19 has a dotted quarter note (E4) and an eighth note (D4). Measure 20 has a dotted quarter note (C4) and an eighth note (B3). Measure 21 has a dotted quarter note (A3) and an eighth note (G3). Bass clef: Measure 19 has a quarter note (G2) and a dotted half note (F2). Measure 20 has a quarter note (A2) and a dotted half note (G2). Measure 21 has a quarter note (B2) and a dotted half note (A2).

22

Measures 22-24. Treble clef: Measure 22 has a dotted quarter note (F4) and an eighth note (E4). Measure 23 has a dotted quarter note (D4) and an eighth note (C4). Measure 24 has a dotted quarter note (B3) and an eighth note (A3). Bass clef: Measure 22 has a quarter note (C3) and a dotted half note (B2). Measure 23 has a quarter note (D3) and a dotted half note (C3). Measure 24 has a quarter note (E3) and a dotted half note (D3).

25

Measures 25-27. Treble clef: eighth notes (green, red, red, green, red, red). Bass clef: quarter notes (blue, blue, blue, blue, blue, blue).

28

Measures 28-30. Treble clef: eighth notes (green, red, red, green, red, red). Bass clef: quarter notes (blue, blue, blue, blue, blue, blue).

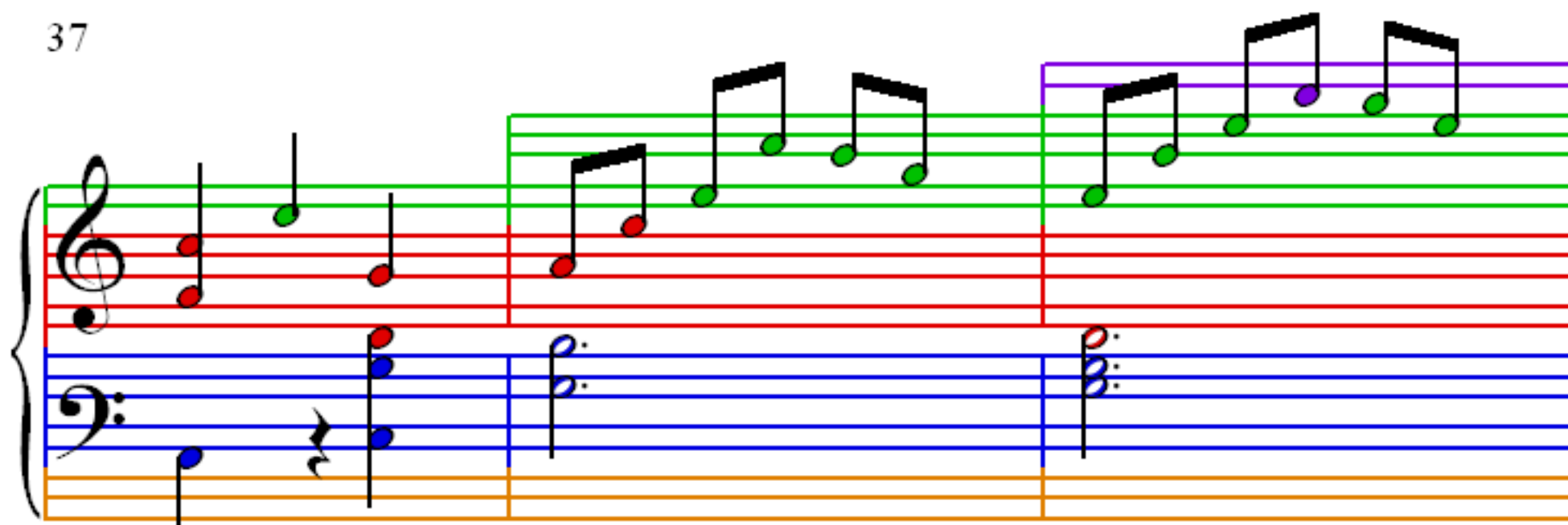
31

Measures 31-33. Treble clef: eighth notes (green, red, red, green, red, red). Bass clef: quarter notes (blue, blue, blue, blue, blue, blue).

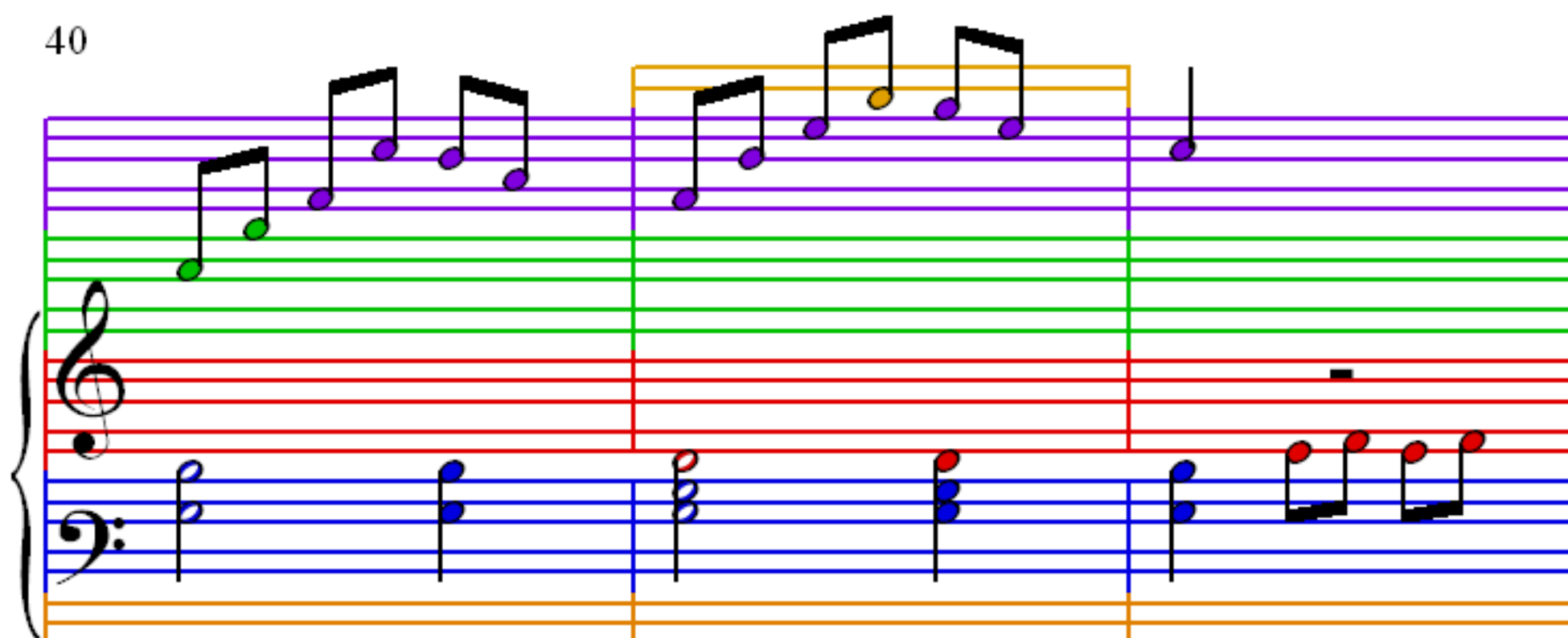
34

Measures 34-36. Treble clef: eighth notes (green, red, red, green, red, red). Bass clef: quarter notes (blue, blue, blue, blue, blue, blue).

37



40



43

