

Rondo

C. P. E. Bach (1714–1788)

1 = 66

1 = 66

5

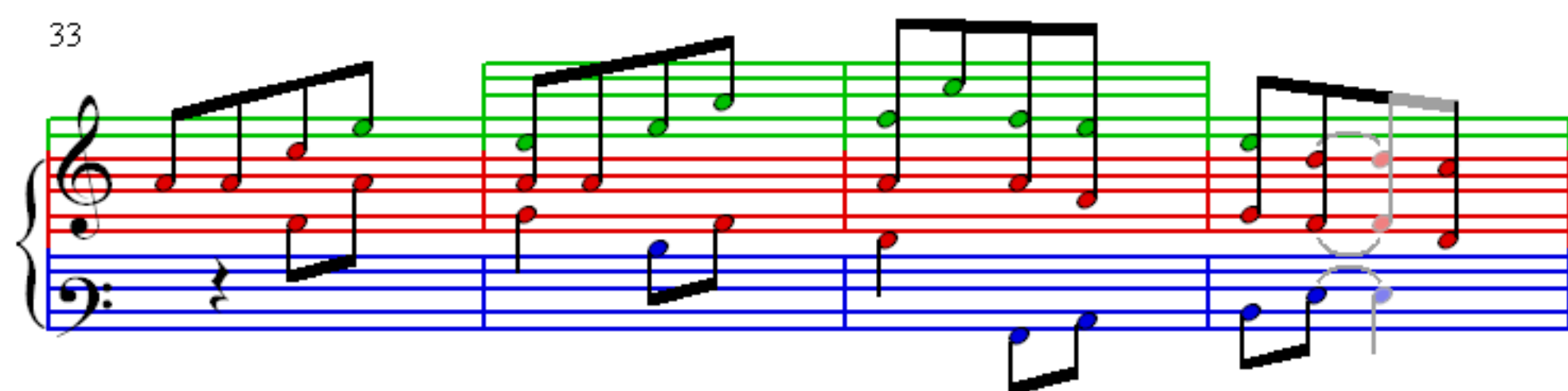
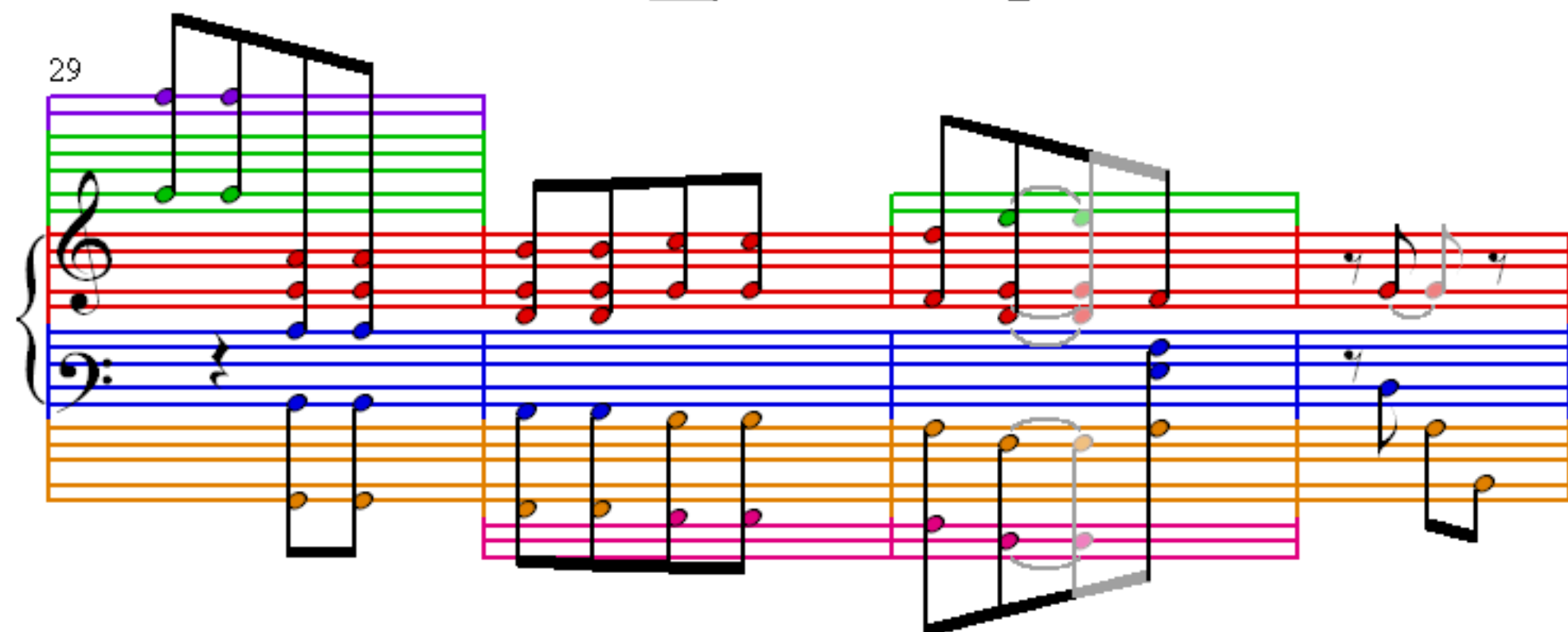
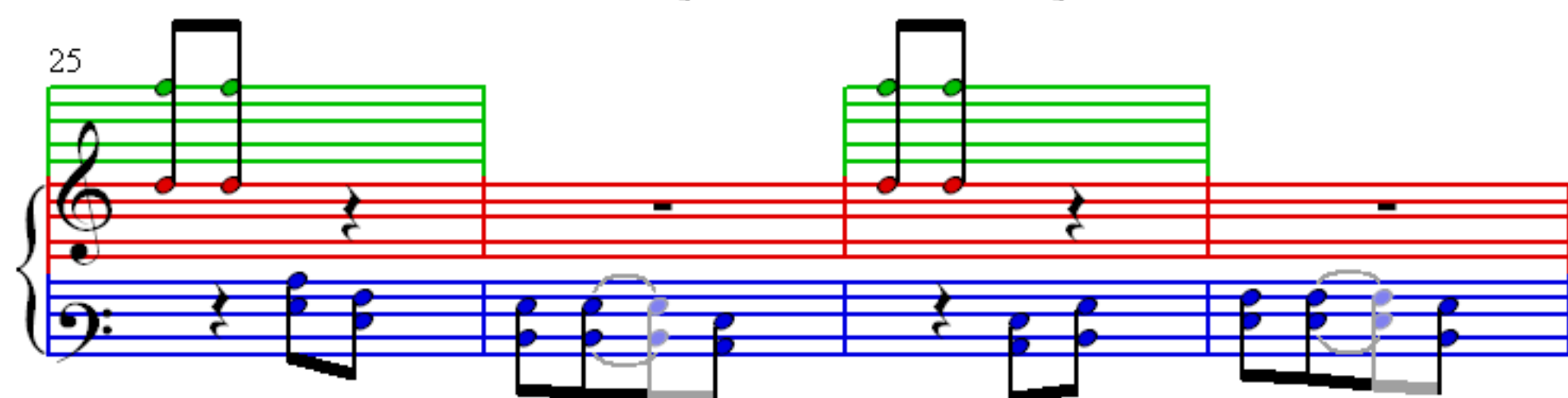
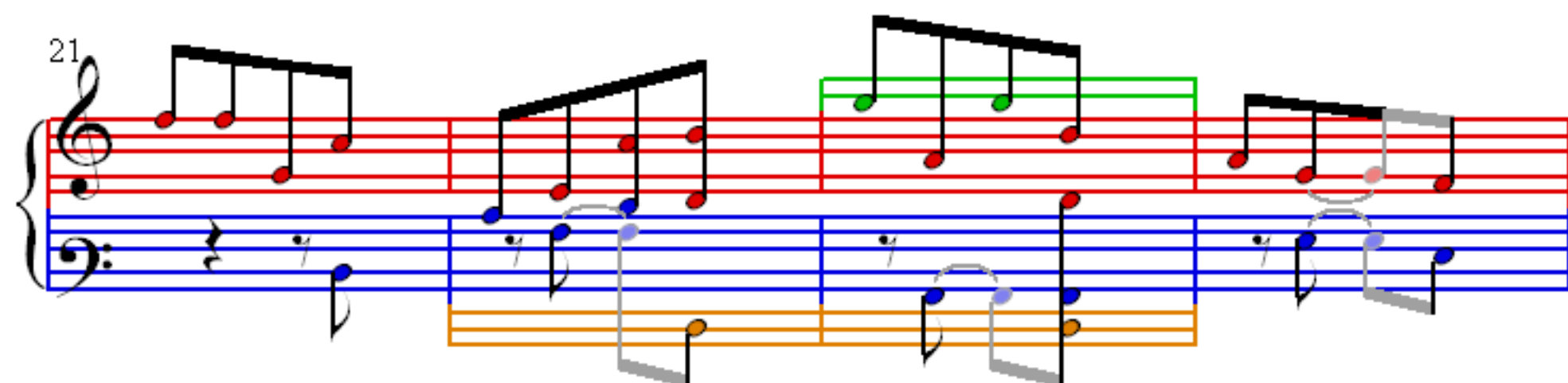
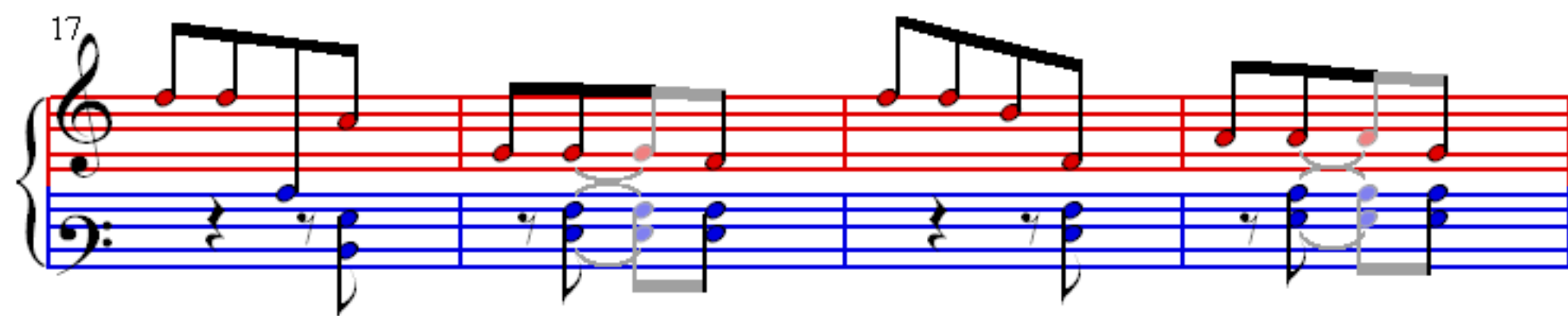
5

9

9

13

13



37

41

45

49

53

57

61

65

69

73

77

81

85

89

93

Rondo

This image shows the musical score for measures 97 through 113 of the piece 'The Rose Tree' in G major. The score is written for piano and includes a vocal line. The piano accompaniment features a repeating eighth-note pattern in the right hand and a bass line in the left hand. The vocal line is a simple melody. The score is color-coded: red for the vocal line, blue for the piano right hand, and orange for the piano left hand. The measures are numbered 97, 101, 105, 109, and 113. The key signature is one sharp (F#), and the time signature is 4/4.

117


117

121

The image shows a musical score for the song 'The Rose Tree'. It consists of two systems of music. The first system starts at measure 117 and the second at measure 121. The score is written for a piano, with a treble and bass staff. The melody is in the treble staff, and the accompaniment is in the bass staff. The music is in 3/4 time. The key signature has one flat (B-flat). The melody is a simple, folk-like tune. The accompaniment consists of a steady bass line. The score is color-coded: the treble staff is red, the bass staff is blue, and the piano part is orange. The melody is written in black ink, and the accompaniment is written in blue ink. The notes are colored to match the staff: red for the treble, blue for the bass, and orange for the piano part. The notes are connected by stems, and there are some ties. The score is divided into measures by vertical bar lines. The first system has four measures, and the second system has four measures. The music is a simple, folk-like tune. The accompaniment consists of a steady bass line. The score is color-coded: the treble staff is red, the bass staff is blue, and the piano part is orange. The melody is written in black ink, and the accompaniment is written in blue ink. The notes are colored to match the staff: red for the treble, blue for the bass, and orange for the piano part. The notes are connected by stems, and there are some ties. The score is divided into measures by vertical bar lines. The first system has four measures, and the second system has four measures.

121

121




125

A musical score for the song 'The Rose Tree'. The score is written for a piano, with a treble clef on the top staff and a bass clef on the bottom staff. The music is in 4/4 time. The melody is in the treble staff, and the accompaniment is in the bass staff. The melody consists of a series of eighth and sixteenth notes, with a final measure containing a whole note. The accompaniment consists of a series of eighth and sixteenth notes, with a final measure containing a whole note. The score is written in black ink on a white background.

129

129

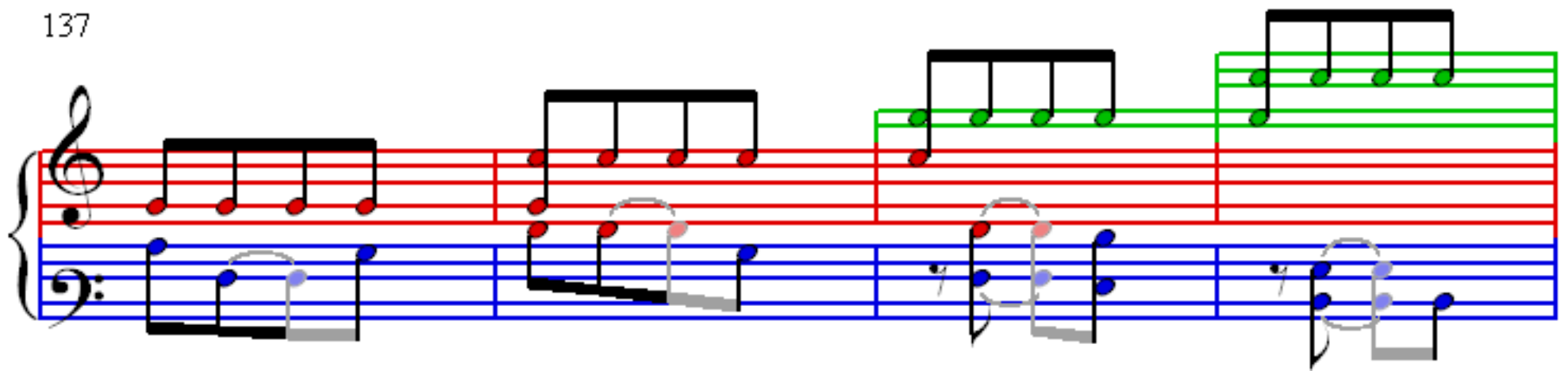


133

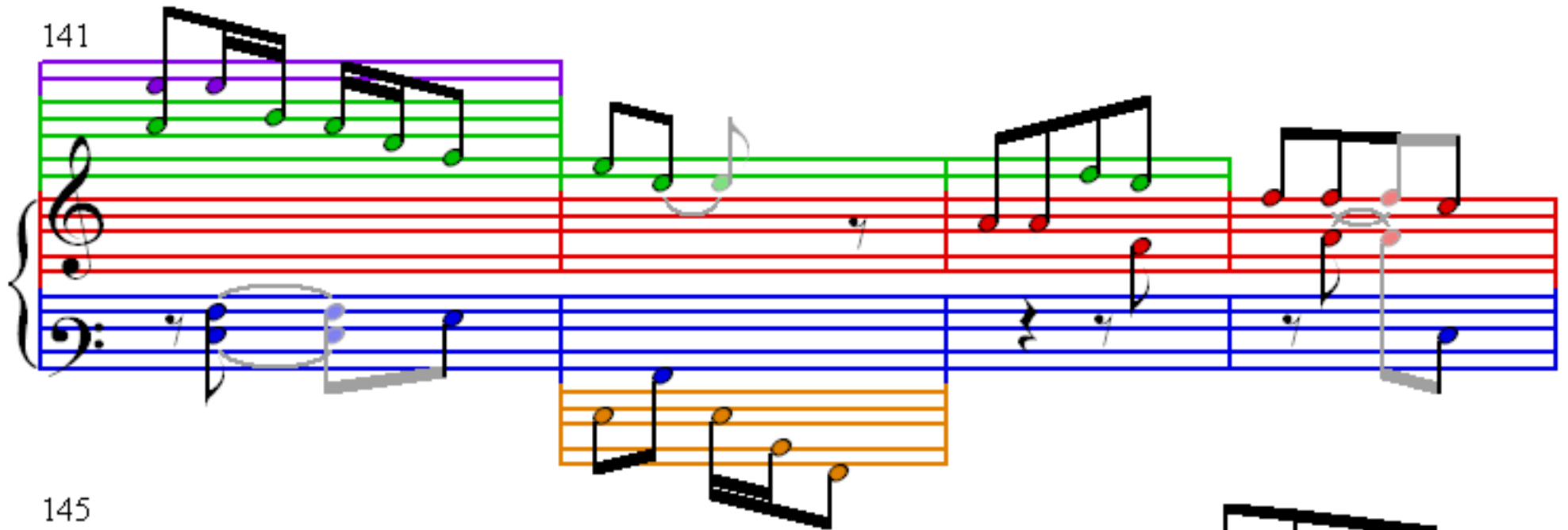
133

The musical score for Example 133 consists of three staves. The top staff has a green background and contains two eighth notes on the first line. The middle staff has a red background and contains four whole rests. The bottom staff has a blue background and contains several measures of music, including eighth and sixteenth notes, some of which are circled or grouped.

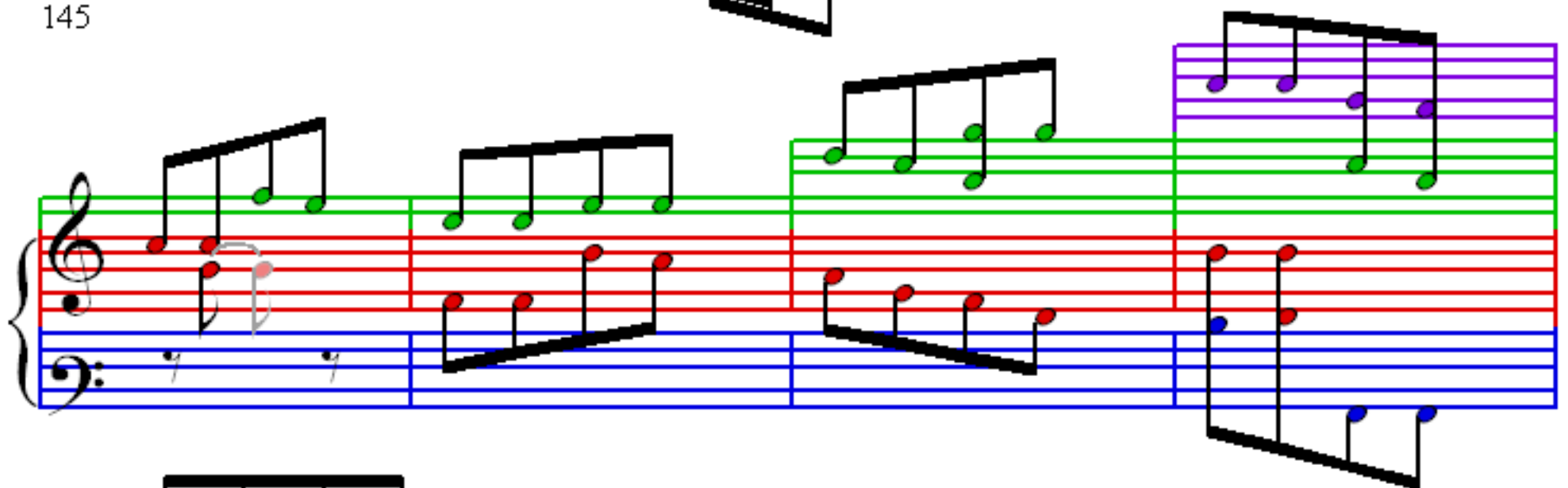
137



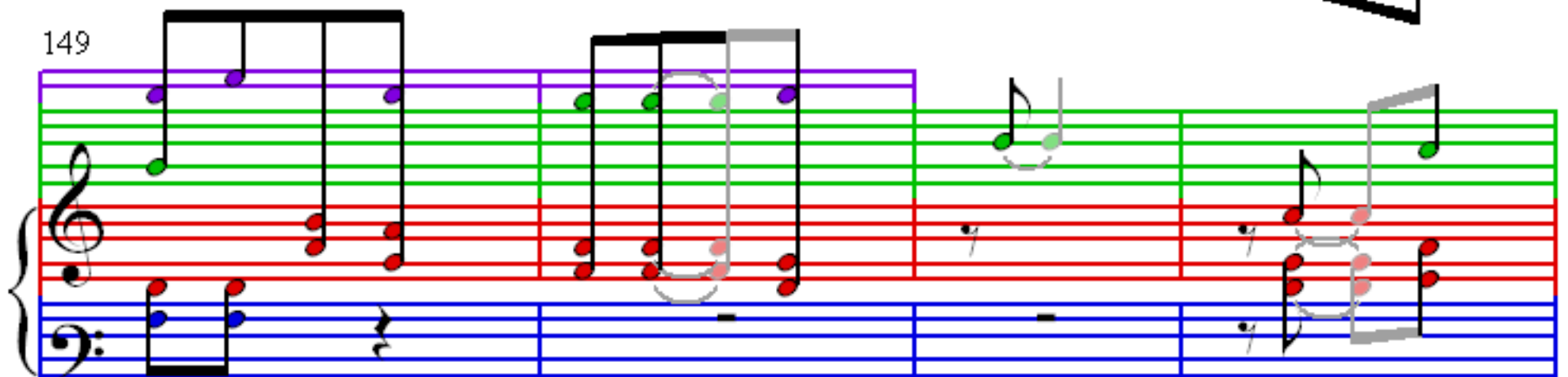
141



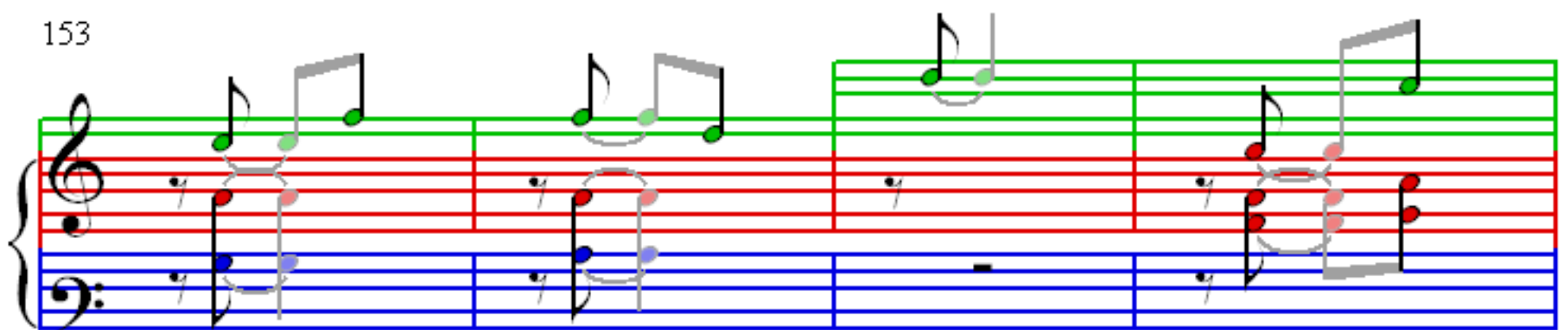
145



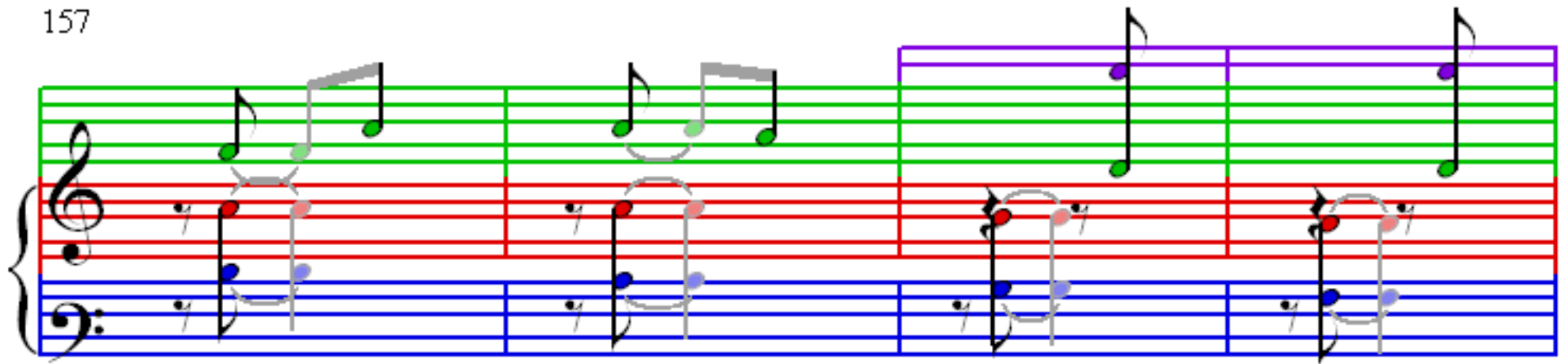
149



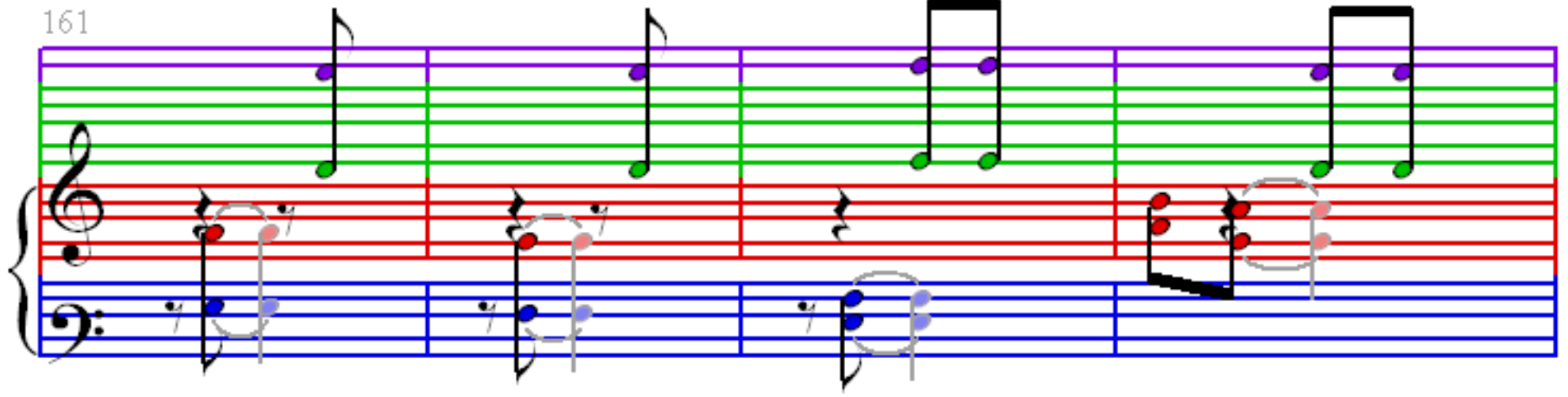
153



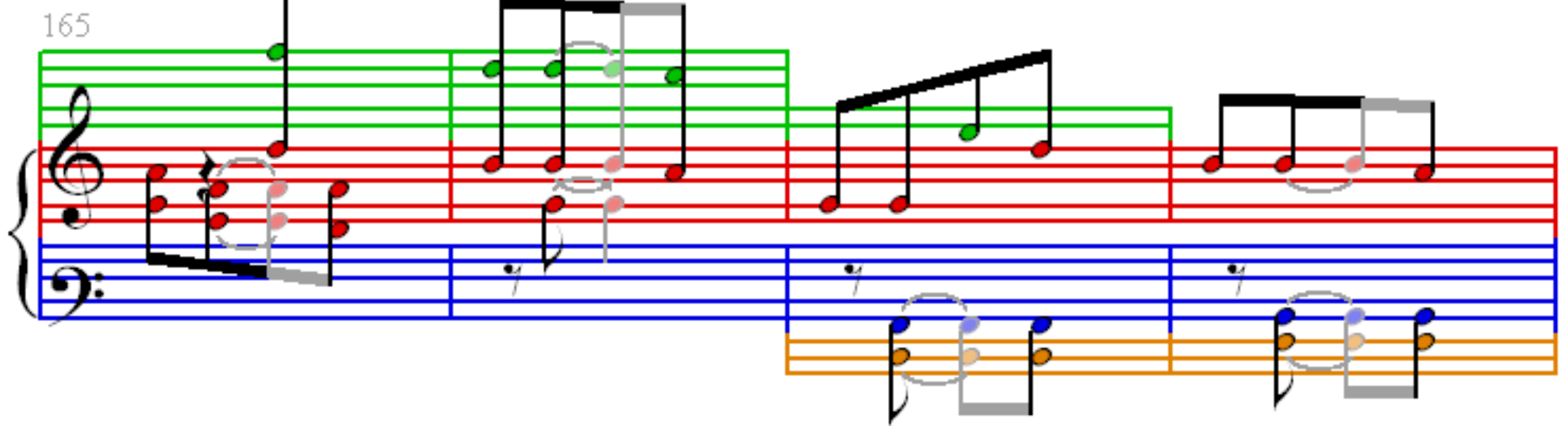
157



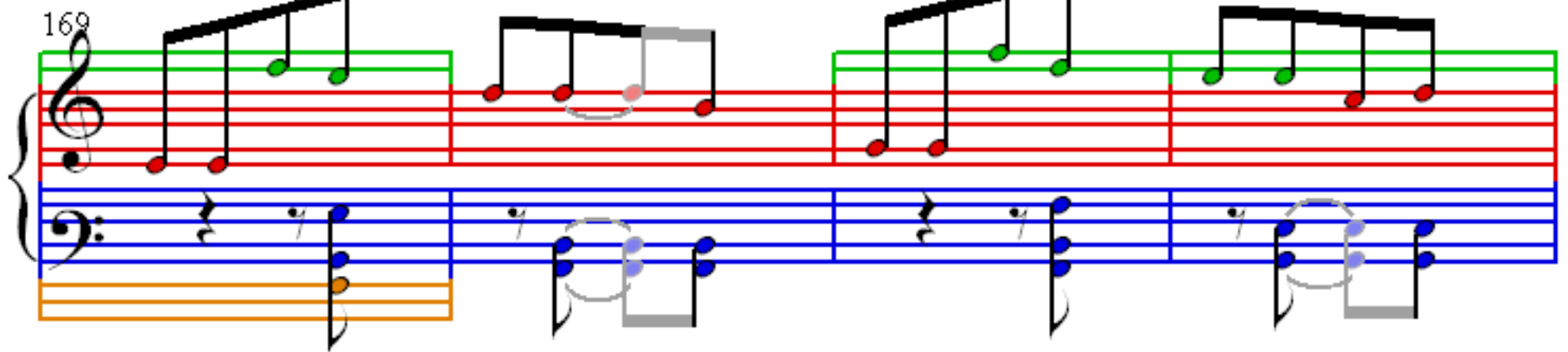
161



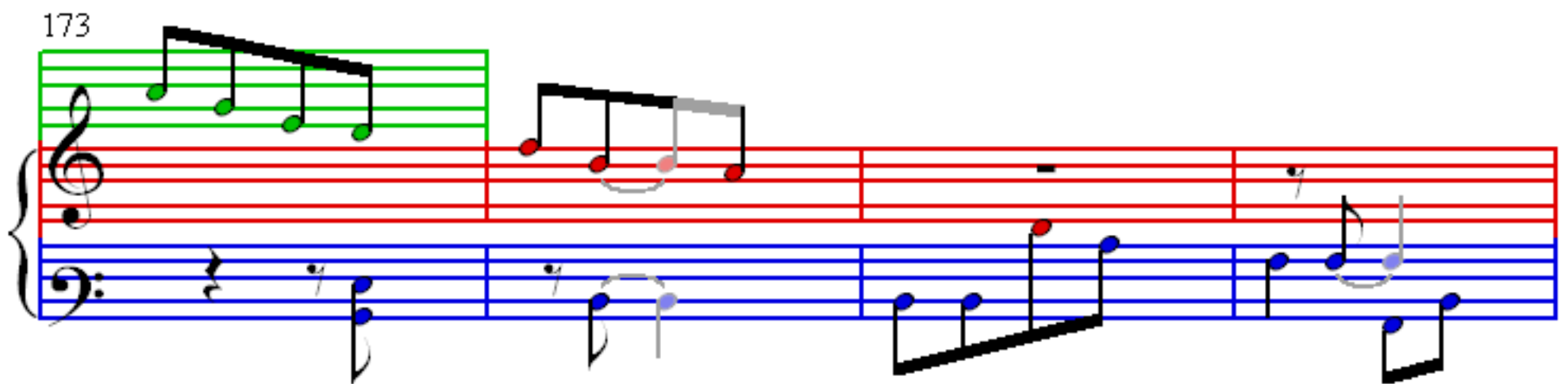
165

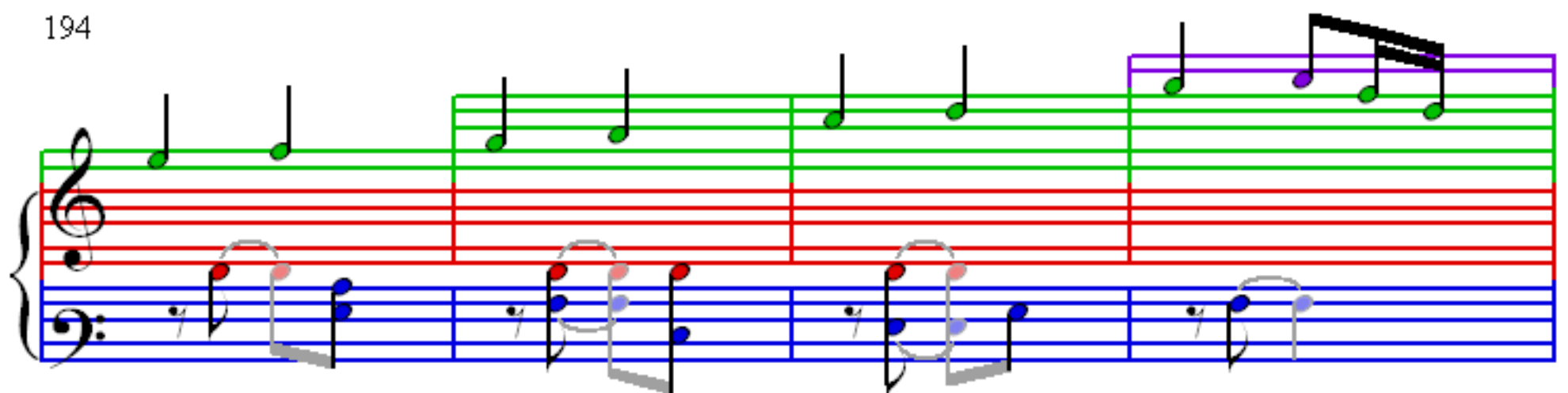
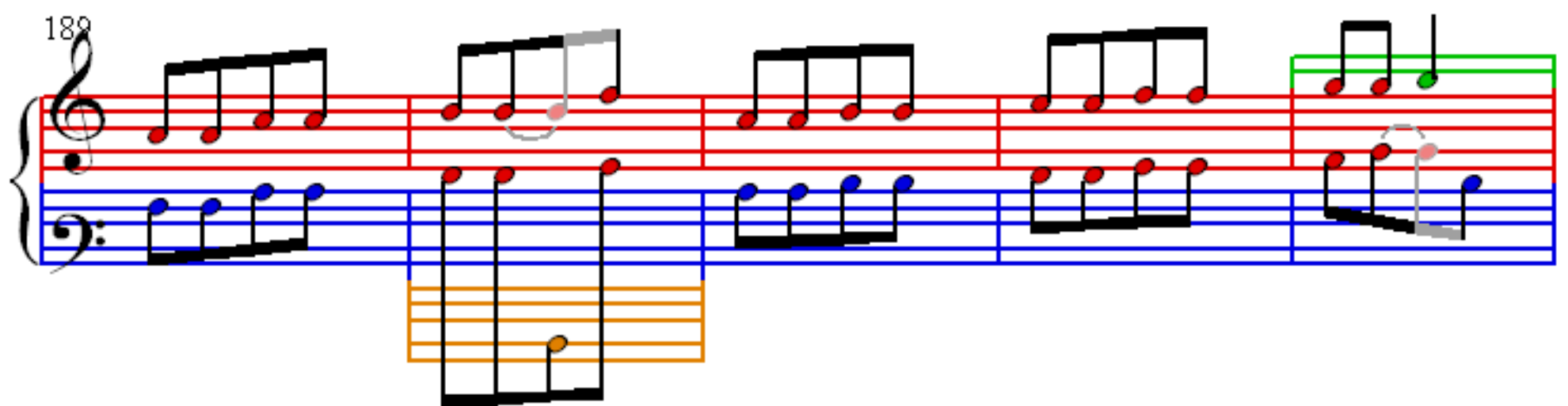
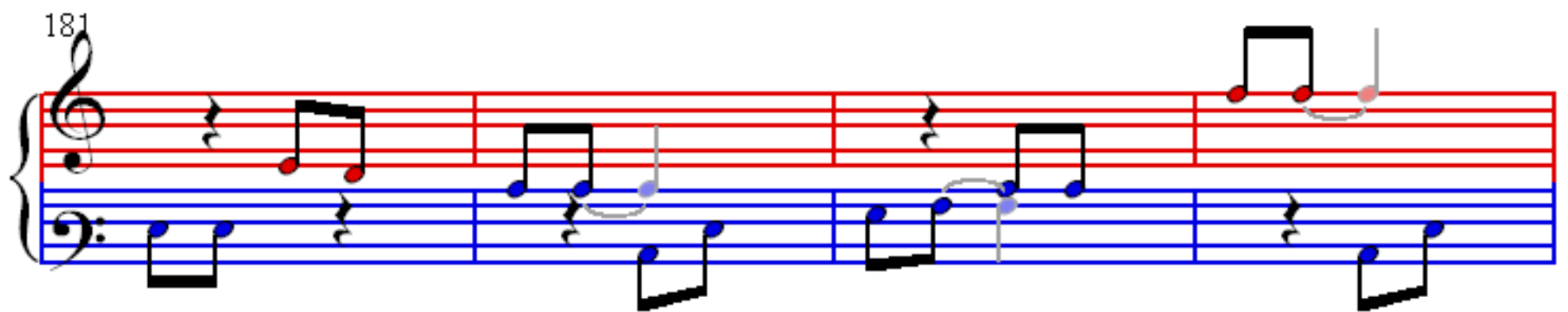
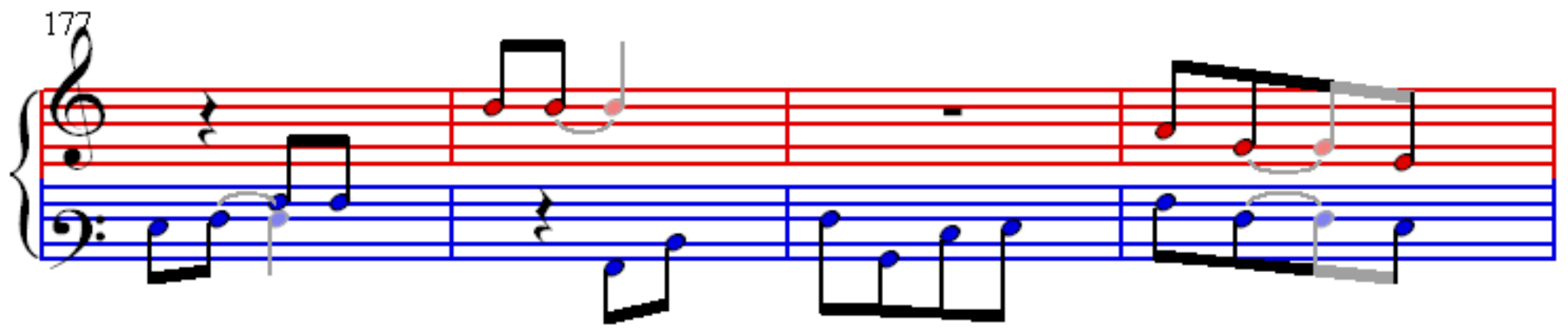


169

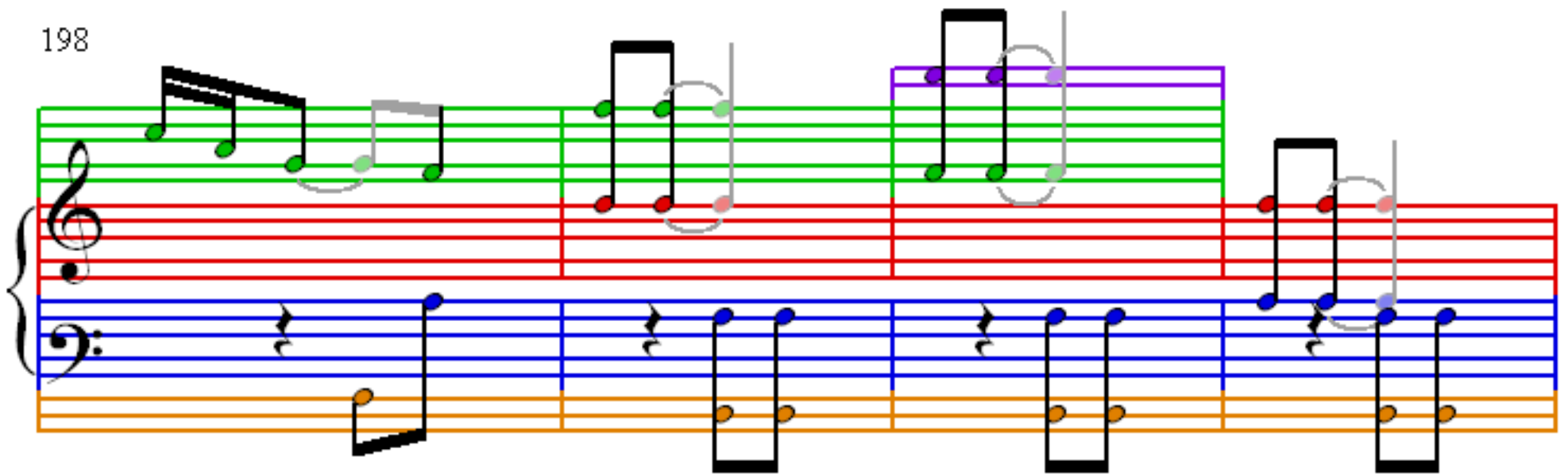


173

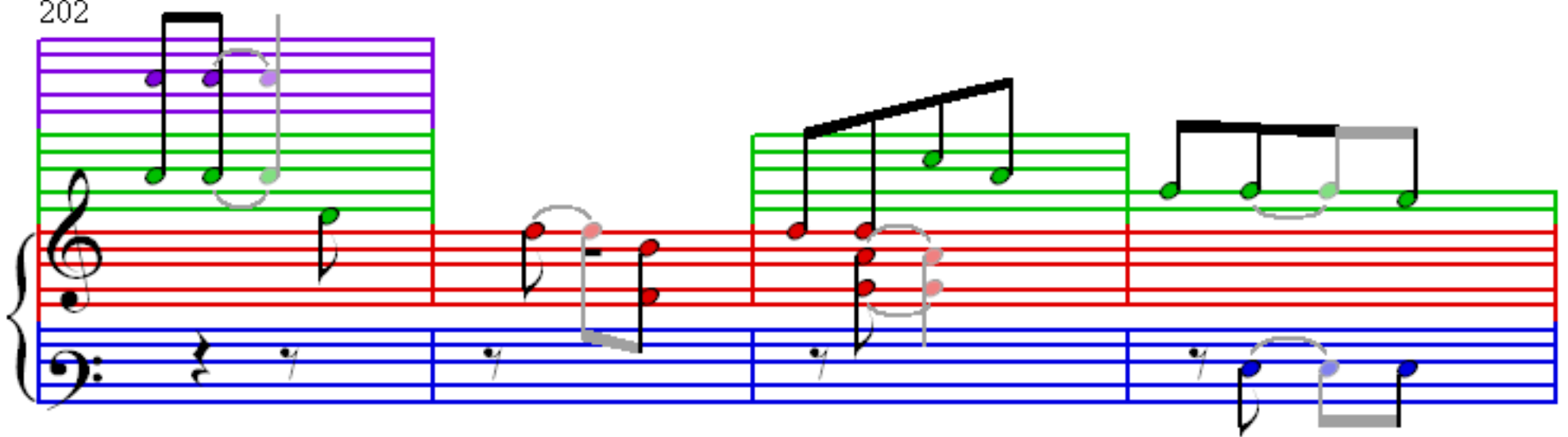




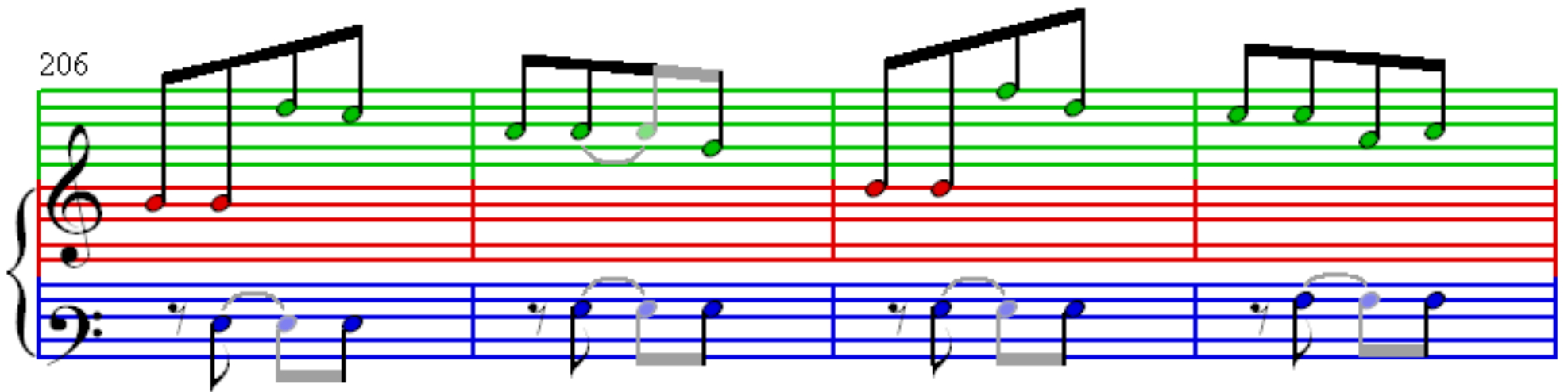
198



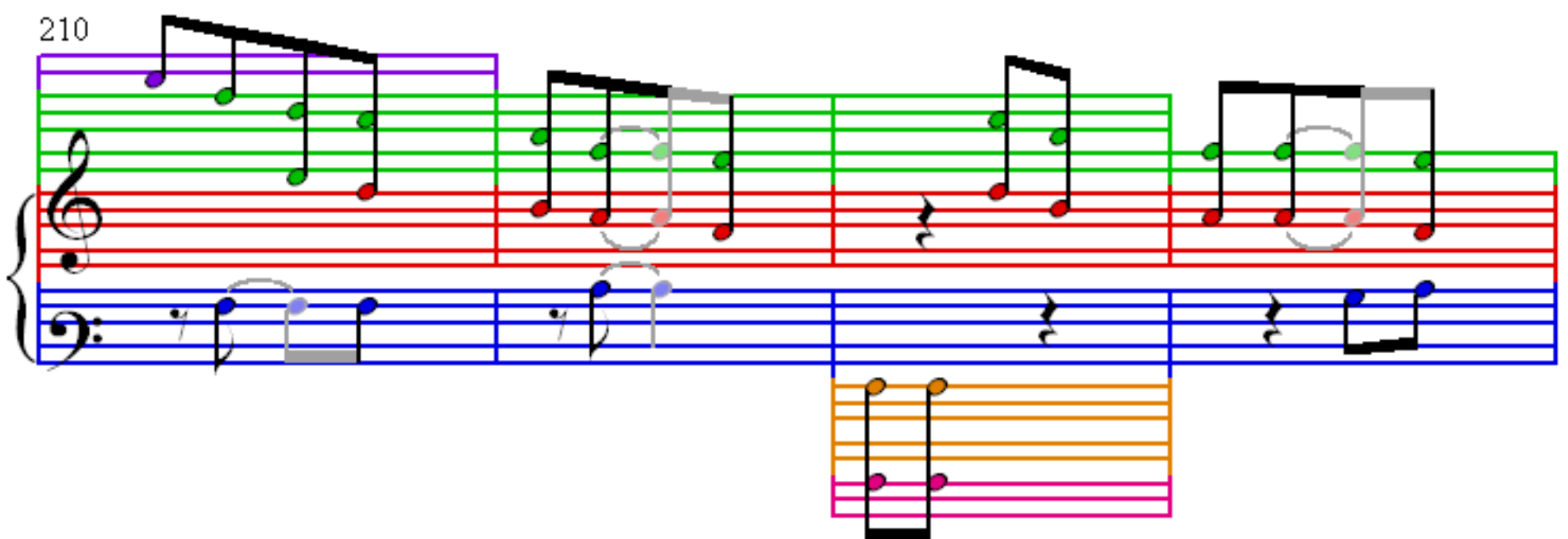
202



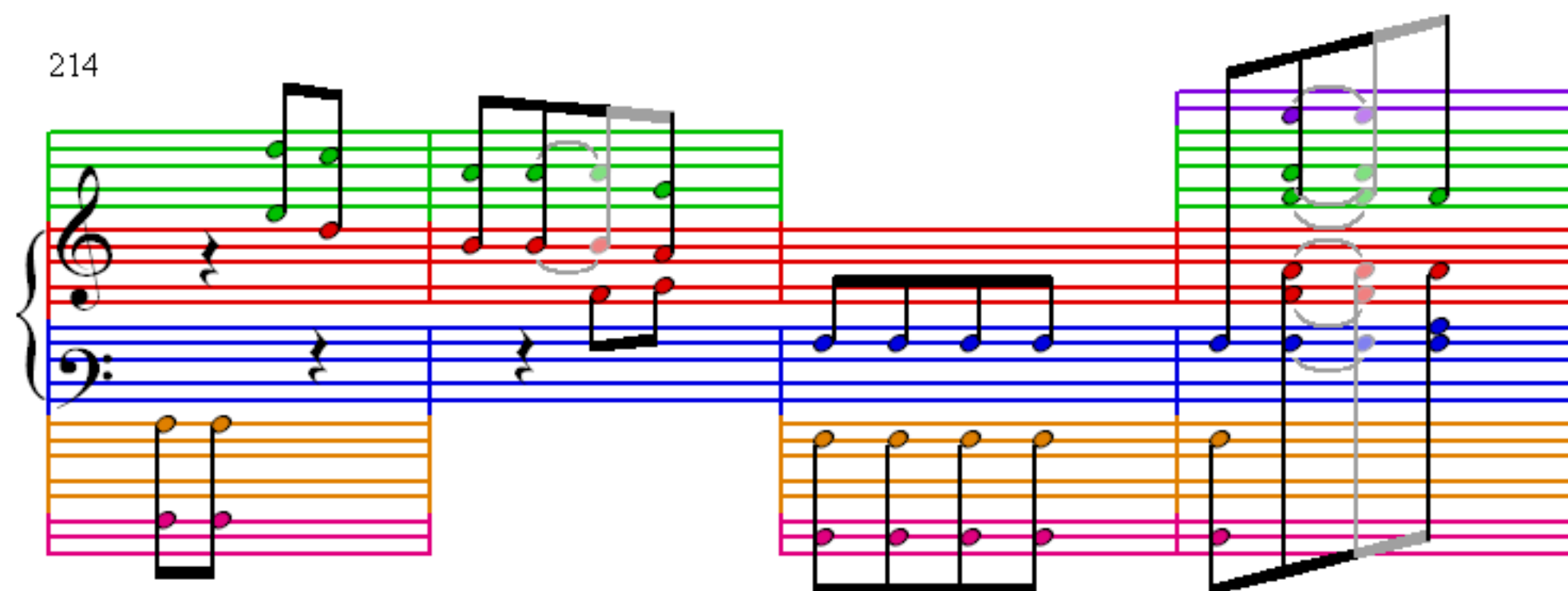
206



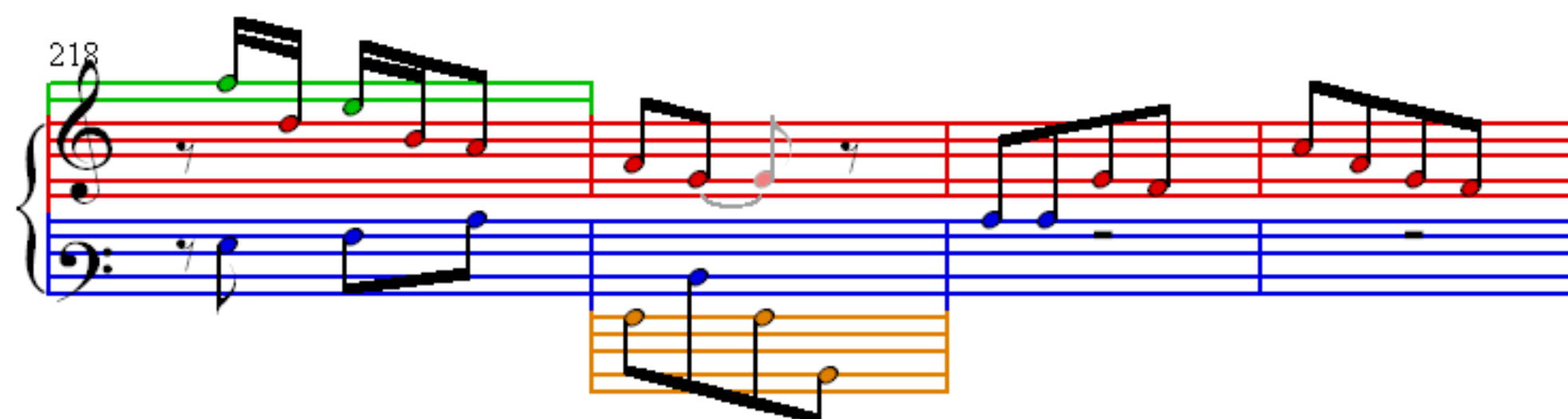
210



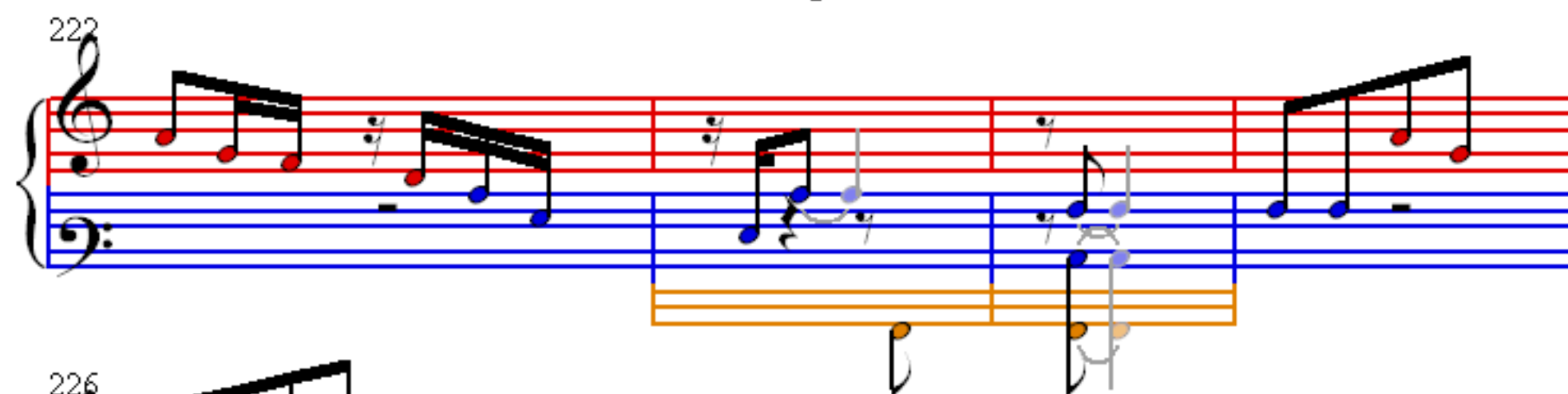
214



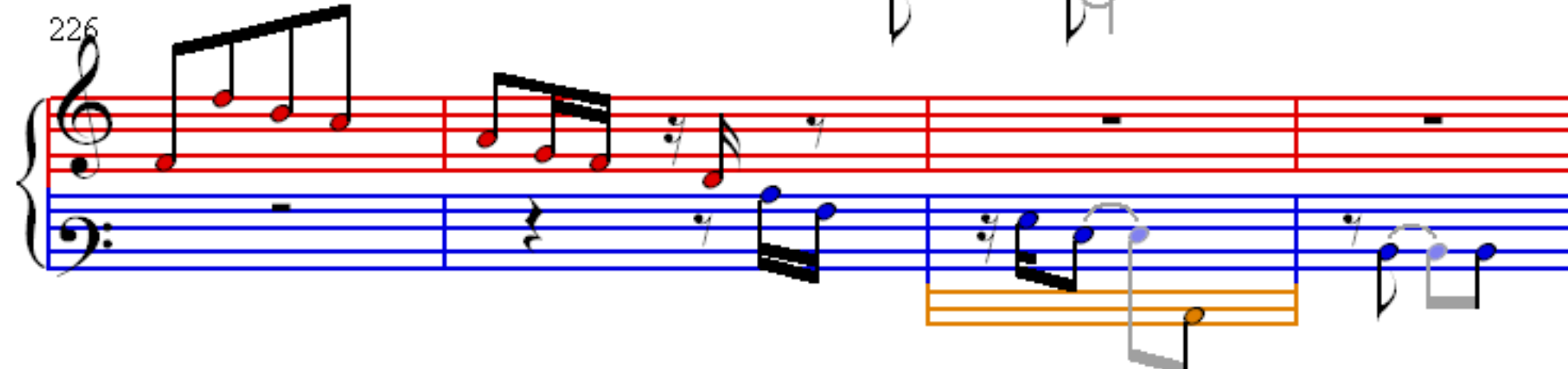
218



222



226



230

