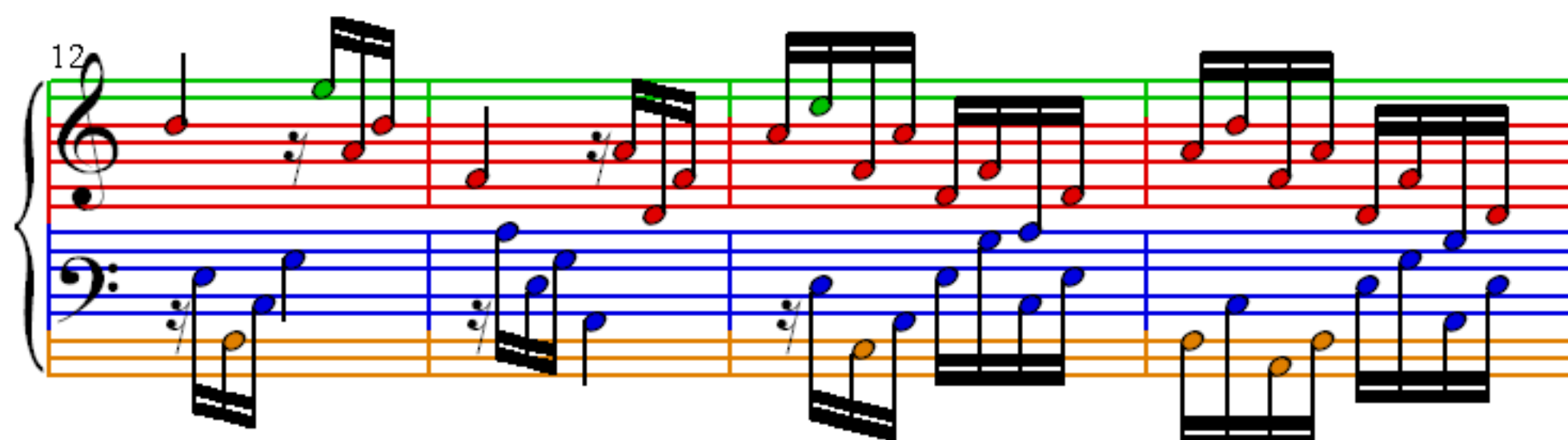
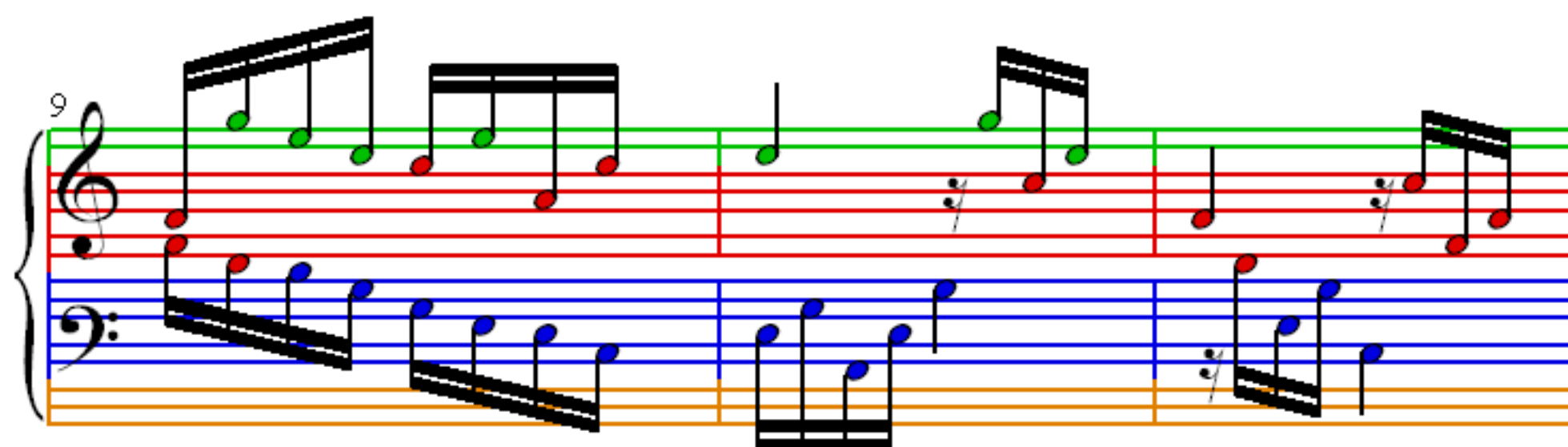
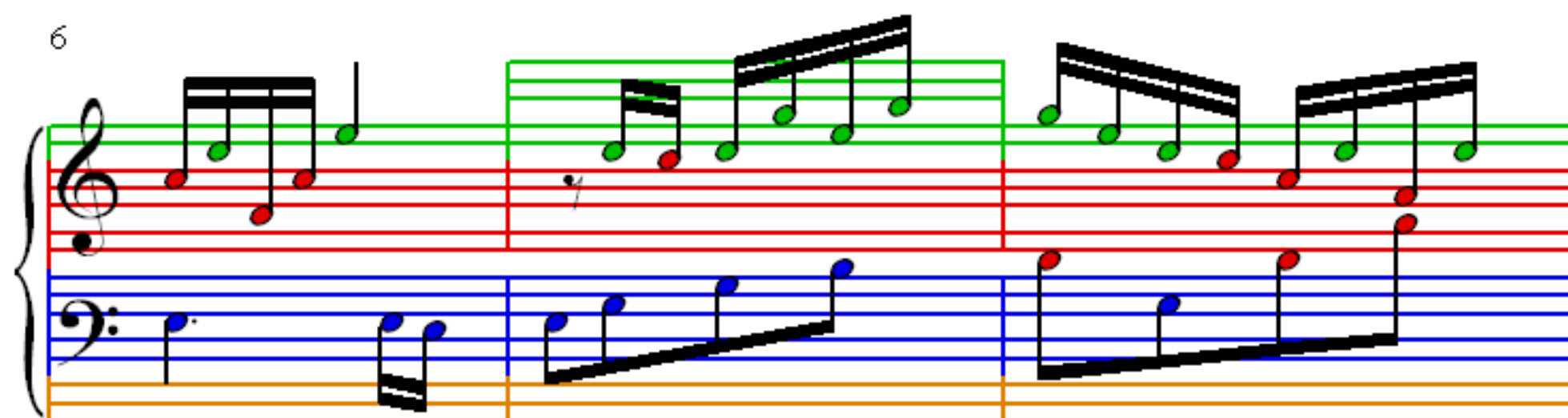
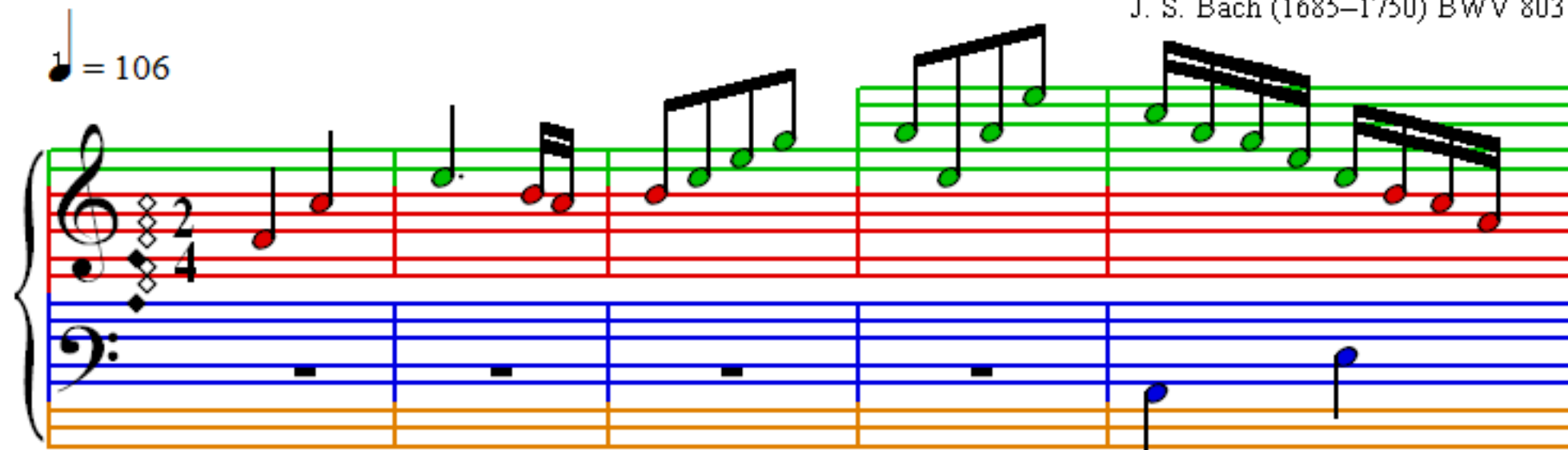
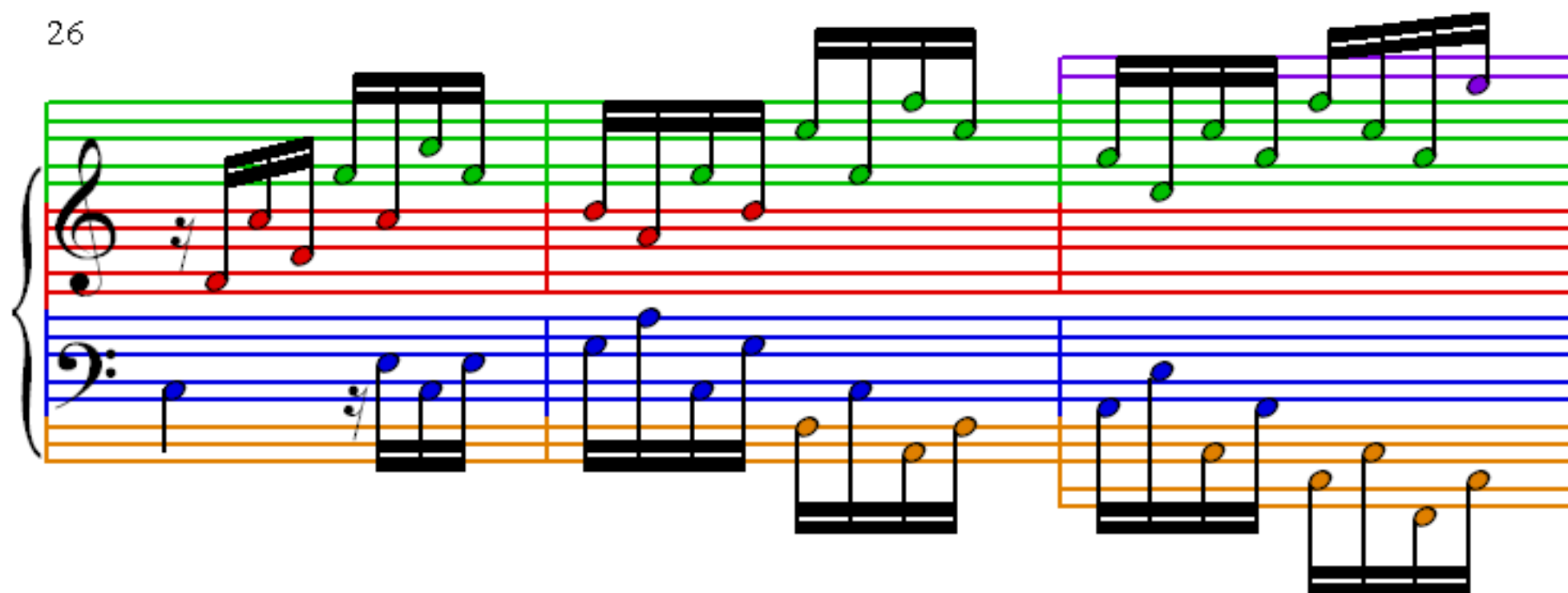
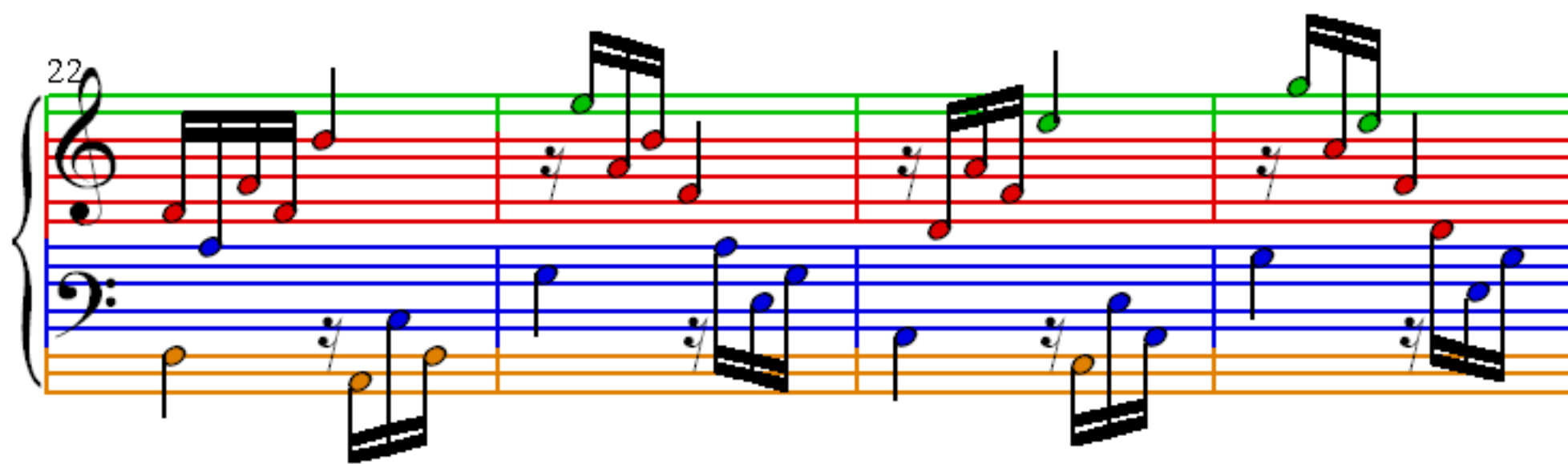
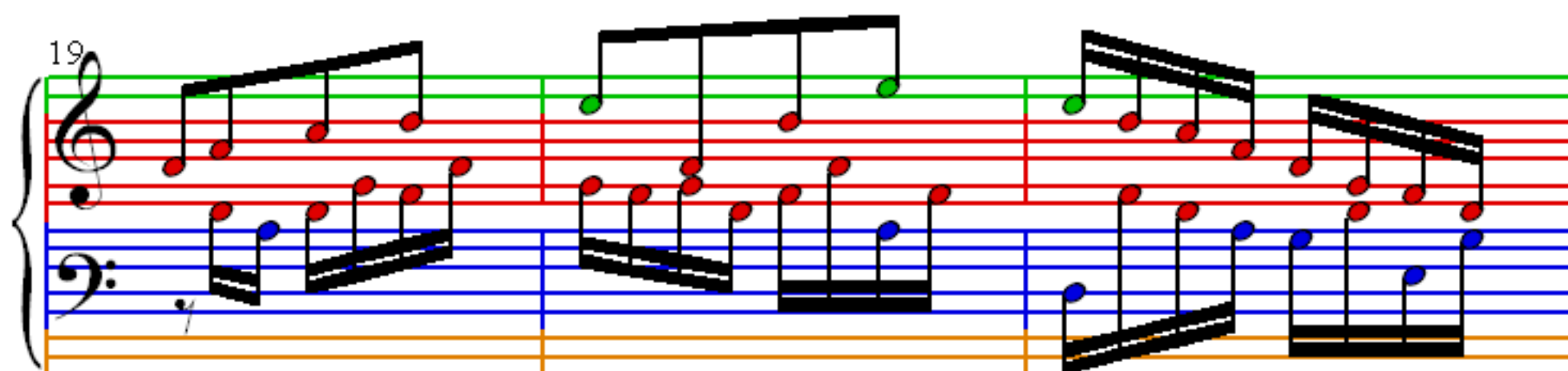
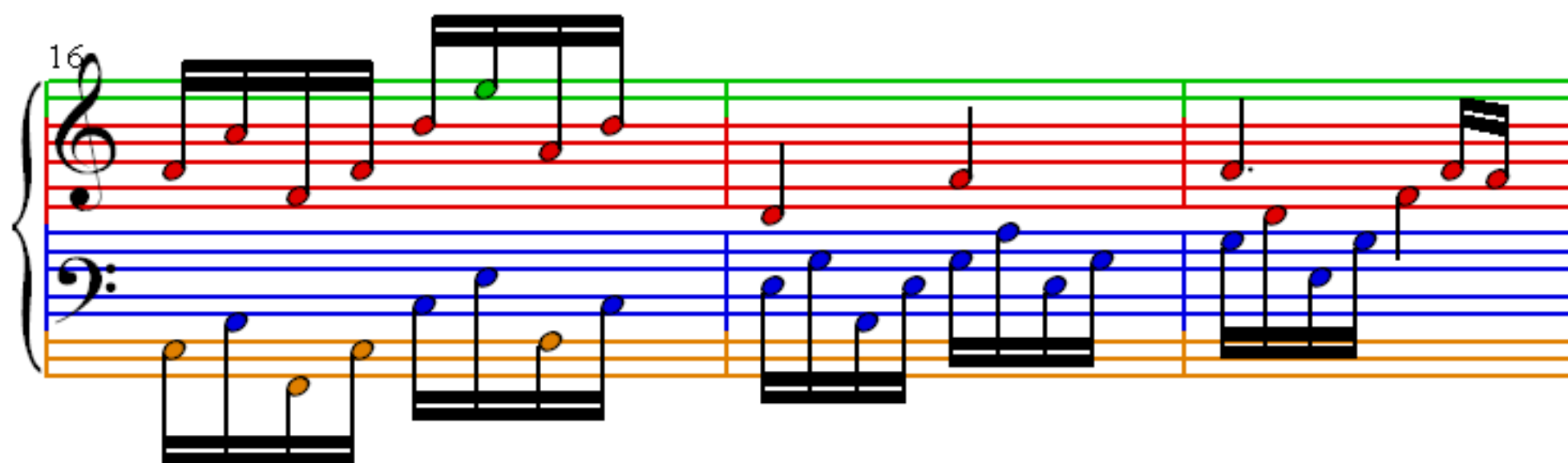


# Duetto II, Clavierübung Part III

J. S. Bach (1685–1750) BWV 803

$\text{♩} = 106$





29

Measures 29-31. Treble clef: measures 29-30 are grouped by a purple bracket, with green notes; measure 31 has red notes. Bass clef: measures 29-30 have orange notes; measure 31 has blue notes.

32

Measures 32-34. Treble clef: all notes are green. Bass clef: measures 32-33 have blue notes; measure 34 has orange notes.

35

Measures 35-37. Treble clef: measures 35-36 have red notes; measure 37 has green notes. Bass clef: measures 35-36 have blue notes; measure 37 has orange notes.

38

Measures 38-40. Treble clef: measures 38-39 have green notes; measure 40 has red notes. Bass clef: measures 38-39 have blue notes; measure 40 has orange notes.

42

46

51

55

59

62

Measures 62-65. Treble clef: G4, A4, B4, C5, D5, E5, F5, G5. Bass clef: G3, F3, E3, D3, C3, B2, A2, G2. Notes are color-coded: red for treble, blue for bass, and orange for ledger lines.

67

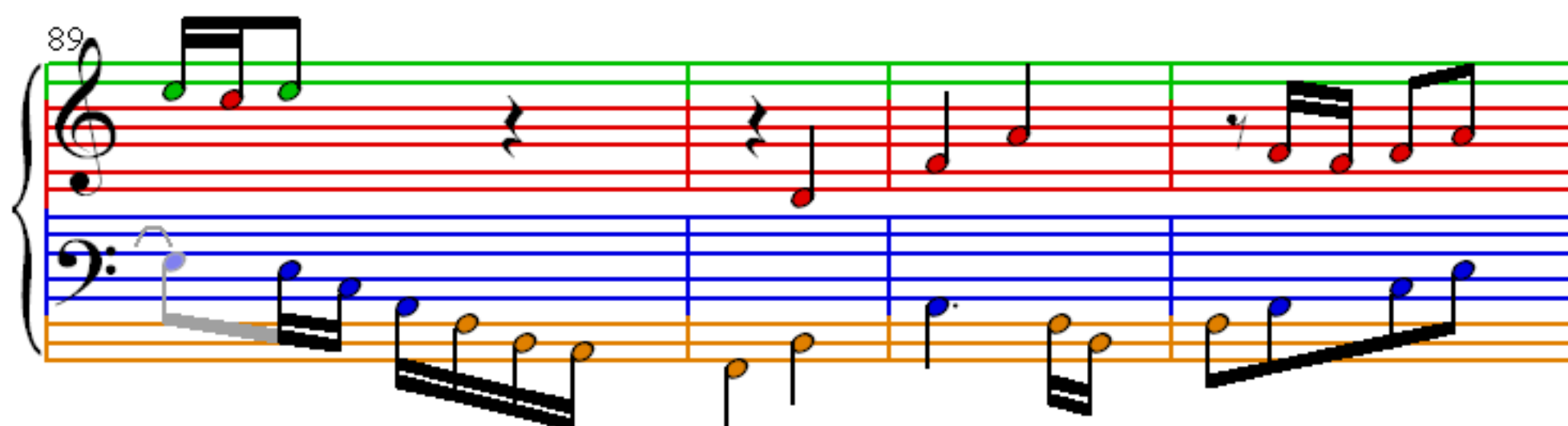
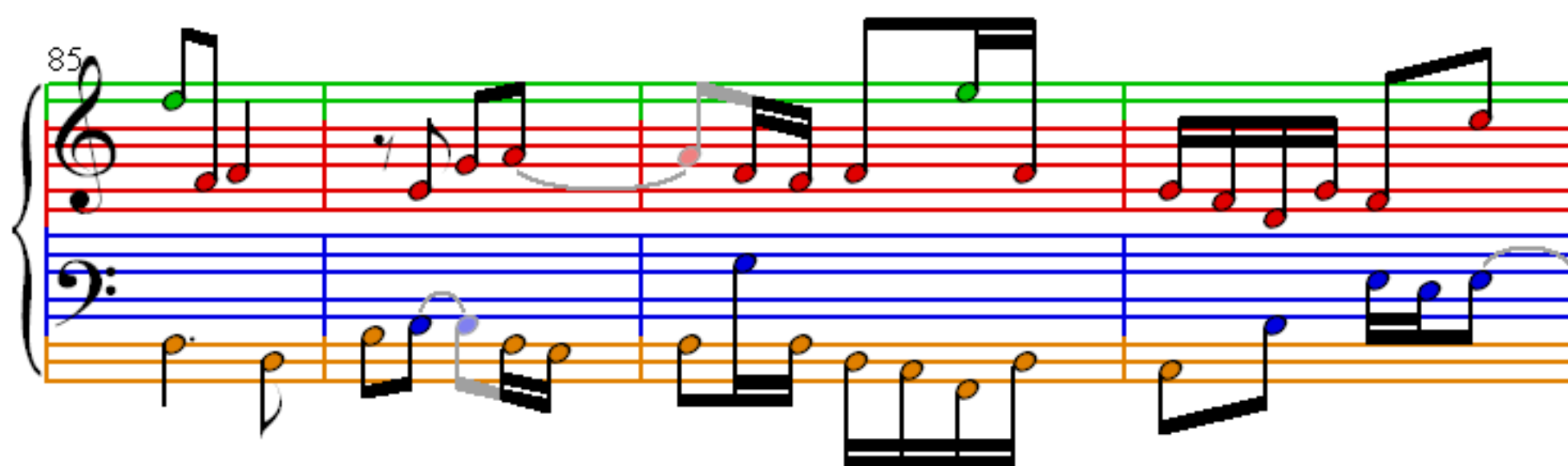
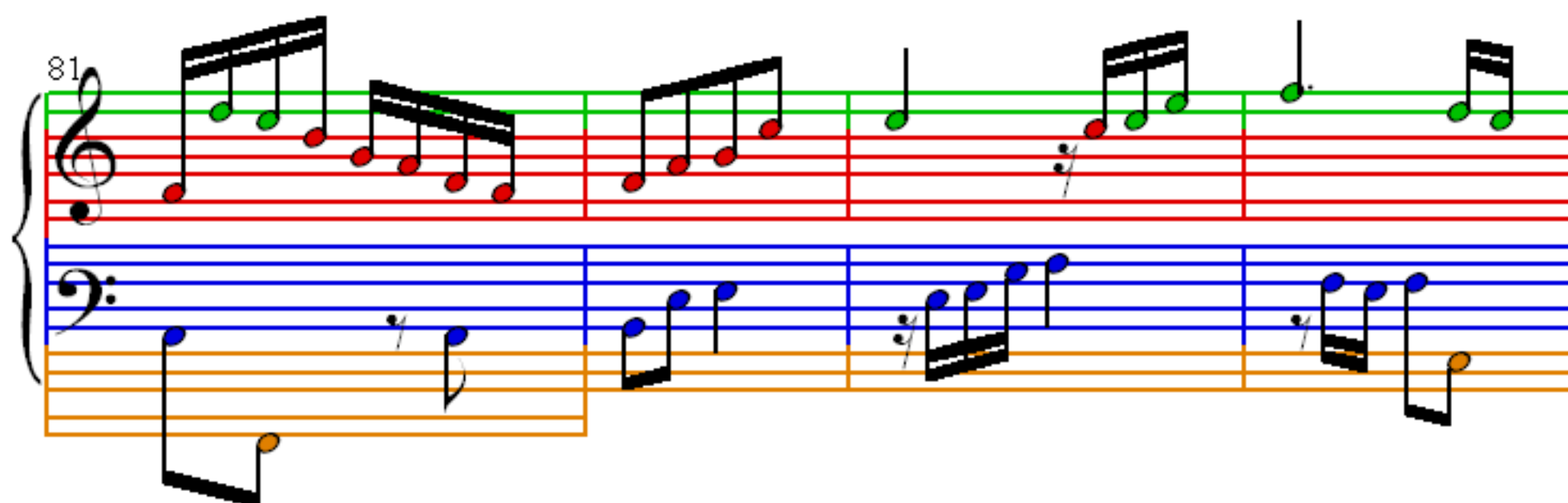
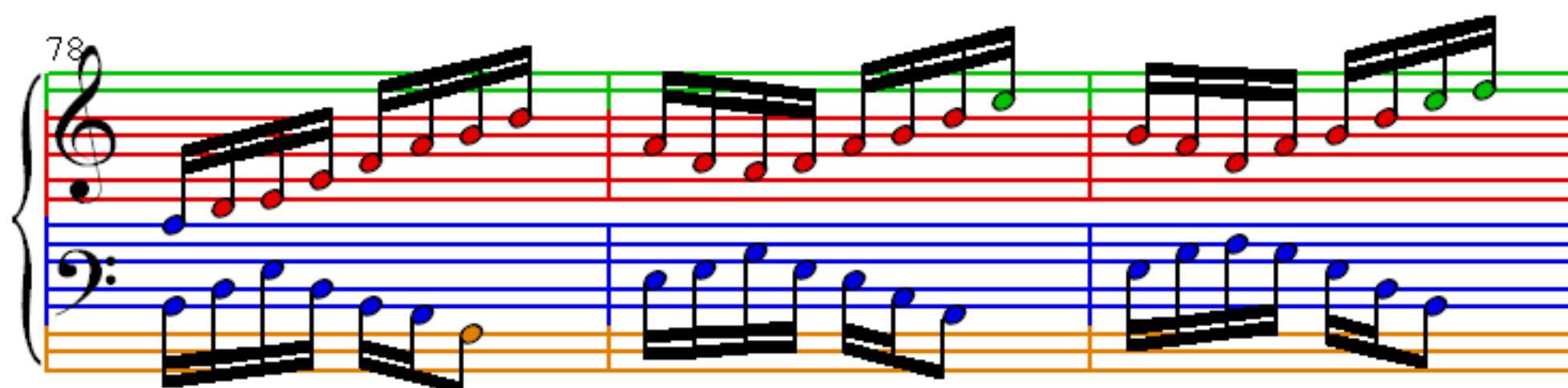
Measures 67-69. Treble clef: G4, A4, B4, C5, D5, E5, F5, G5. Bass clef: G3, F3, E3, D3, C3, B2, A2, G2. Notes are color-coded: red for treble, blue for bass, and orange for ledger lines.

70

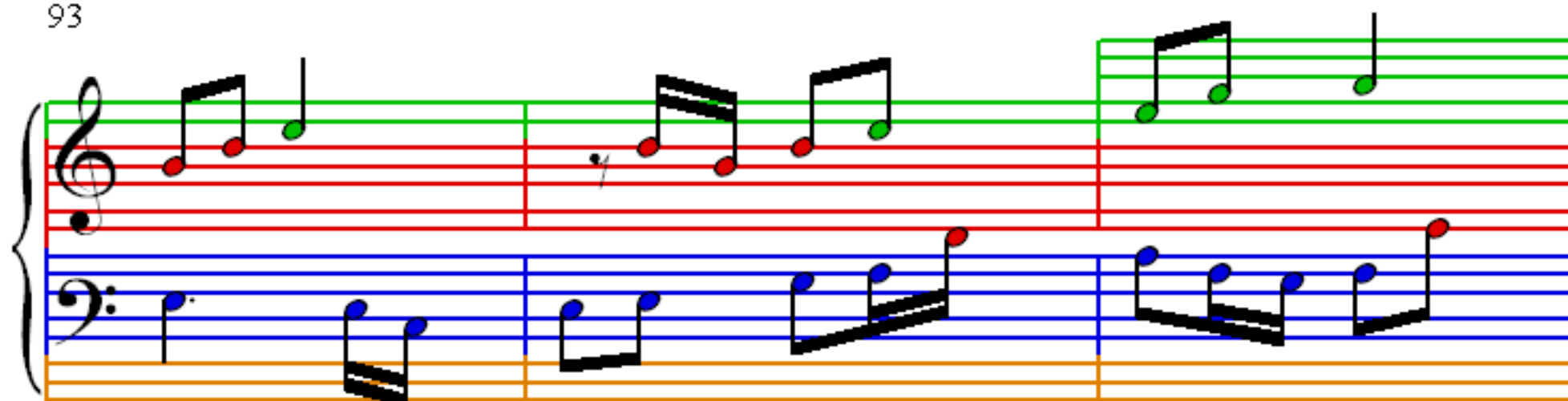
Measures 70-73. Treble clef: G4, A4, B4, C5, D5, E5, F5, G5. Bass clef: G3, F3, E3, D3, C3, B2, A2, G2. Notes are color-coded: red for treble, blue for bass, and orange for ledger lines.

74

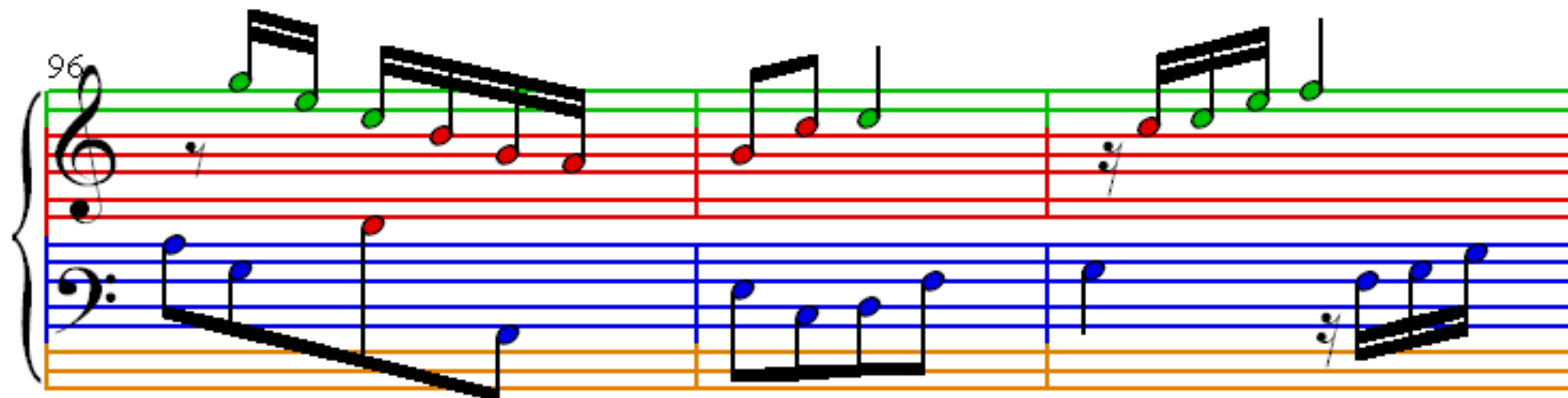
Measures 74-77. Treble clef: G4, A4, B4, C5, D5, E5, F5, G5. Bass clef: G3, F3, E3, D3, C3, B2, A2, G2. Notes are color-coded: red for treble, blue for bass, and orange for ledger lines.



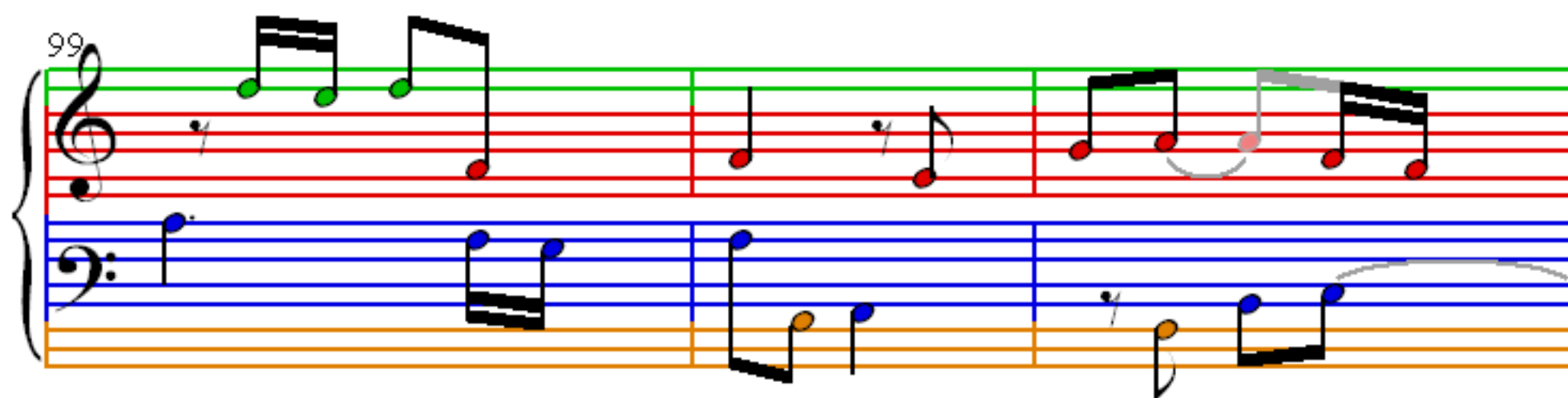
93



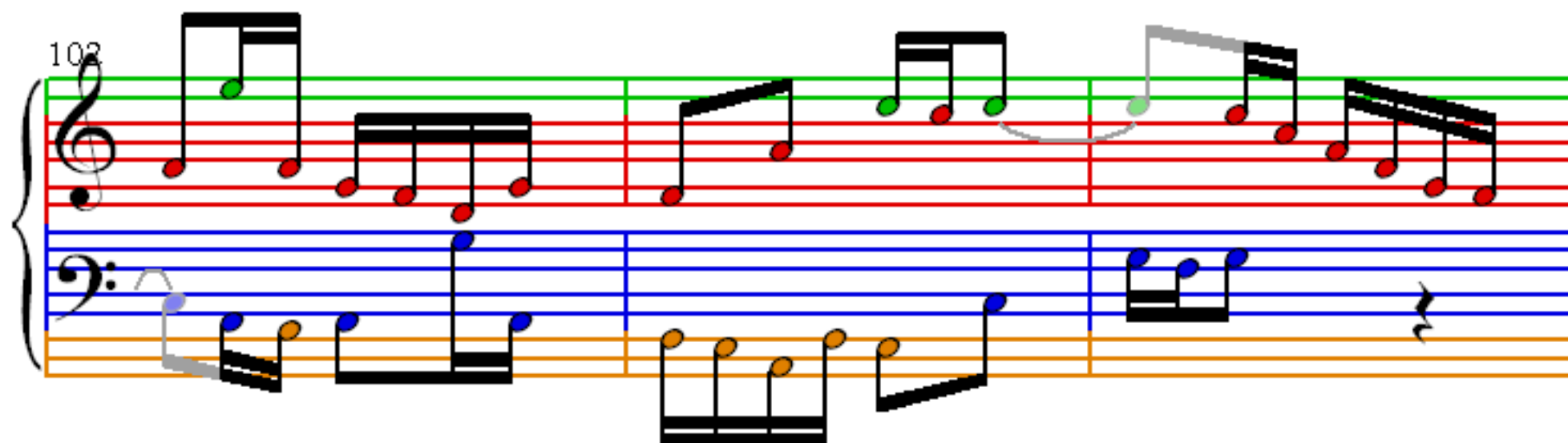
96



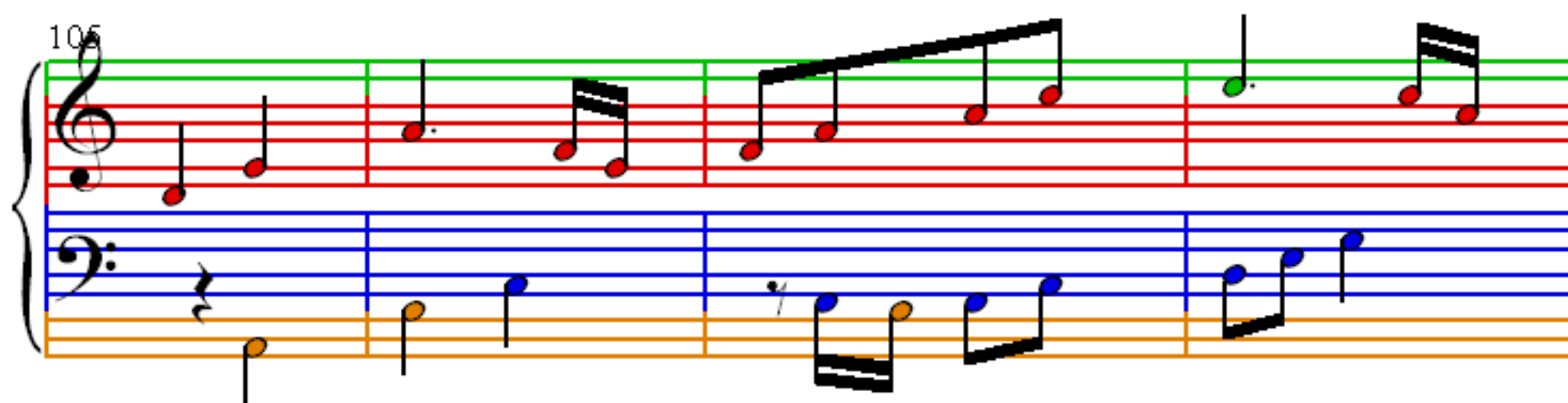
99



102



105





109

112

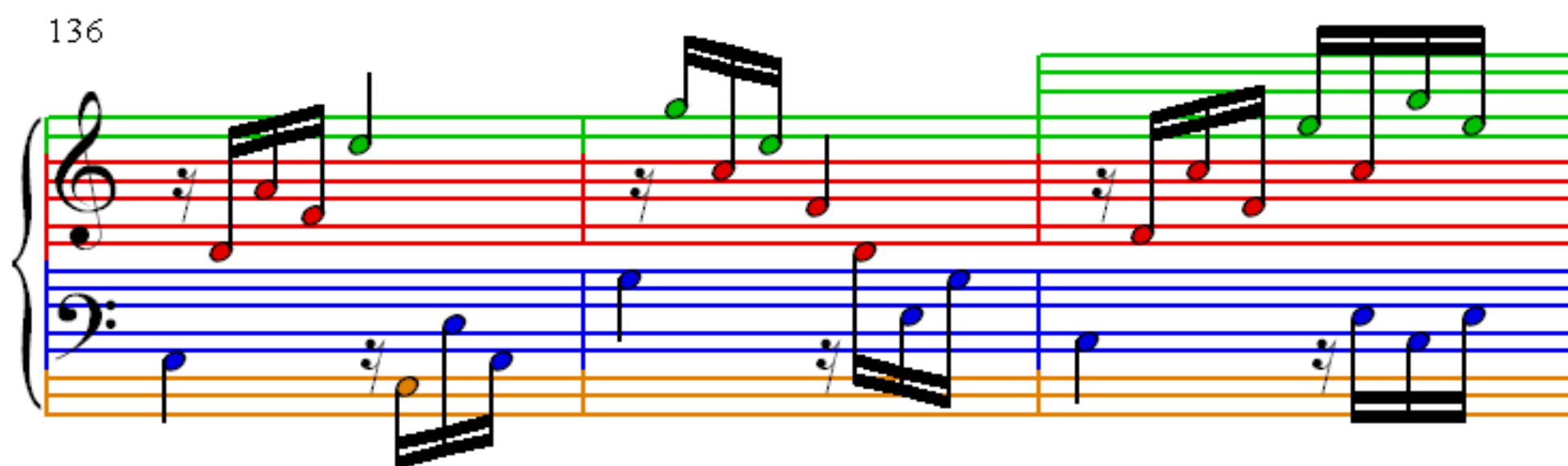
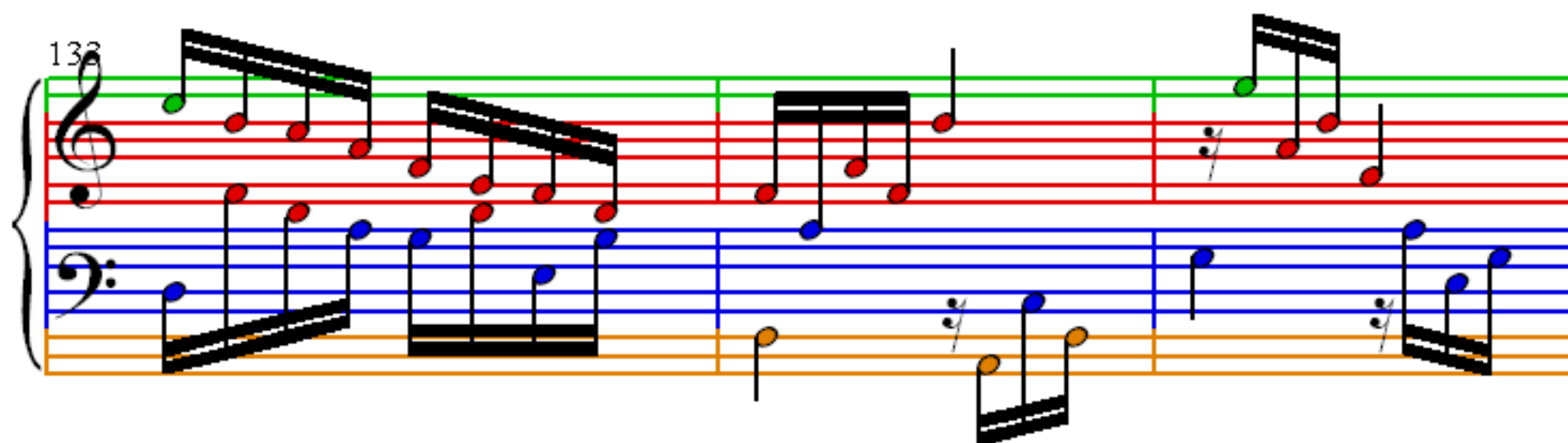
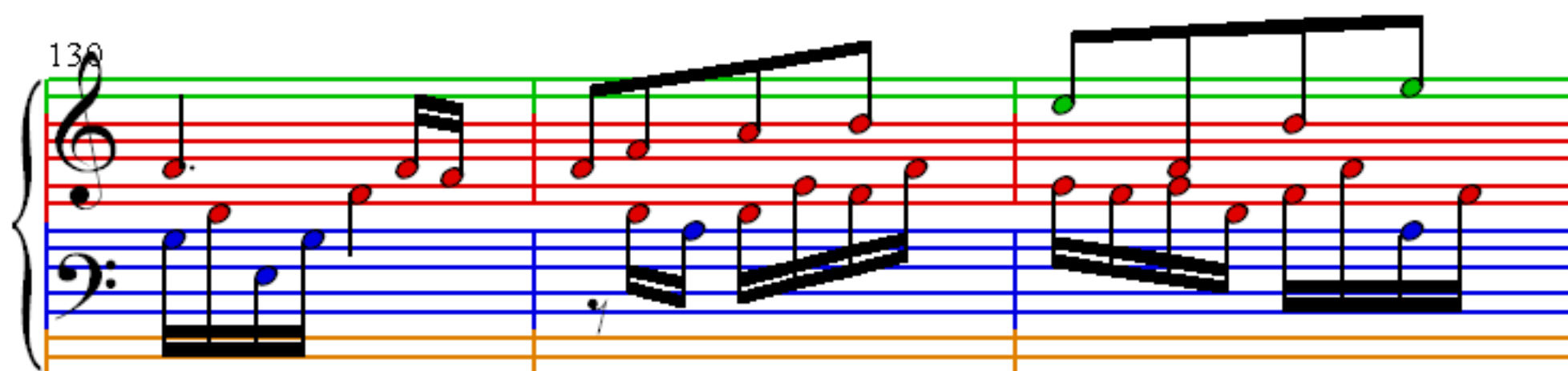
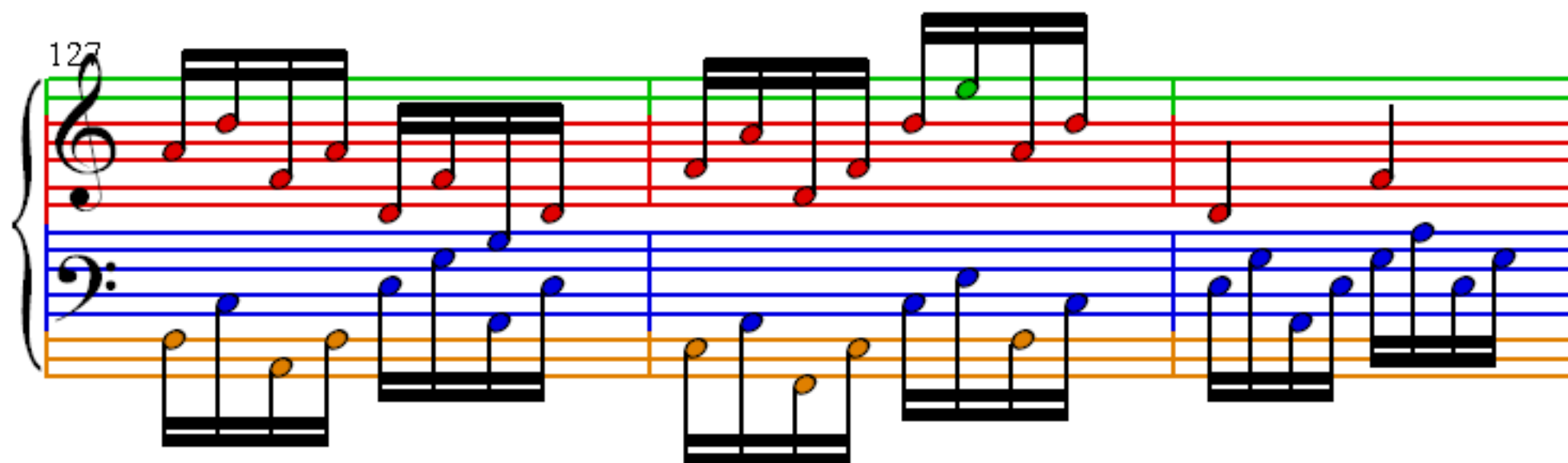
116

120

123

This image displays a musical score for a piano duet, consisting of five systems of music. Each system is written for two staves: a treble staff (top) and a bass staff (bottom), connected by a brace on the left. The notes are color-coded: red for the right hand (treble staff) and blue for the left hand (bass staff). The score is divided into measures by vertical bar lines. The first system (measures 109-111) shows a treble staff with eighth and sixteenth notes, and a bass staff with eighth notes and a whole note. The second system (measures 112-115) features a treble staff with a half note and a whole note, and a bass staff with eighth notes and a whole note. The third system (measures 116-119) shows a treble staff with eighth and sixteenth notes, and a bass staff with eighth notes and a whole note. The fourth system (measures 120-122) features a treble staff with eighth and sixteenth notes, and a bass staff with eighth notes and a whole note. The fifth system (measures 123) shows a treble staff with eighth and sixteenth notes, and a bass staff with eighth notes and a whole note. The score is written in a standard musical notation style, with a key signature of one flat (B-flat) and a time signature of 4/4.





139

Measures 139-141 of a piano duet. The right hand (treble clef) features a melody with eighth and sixteenth notes, some beamed together. The left hand (bass clef) provides a harmonic accompaniment with eighth and sixteenth notes. The notation is color-coded: red for the right hand and blue for the left hand. The background is divided into three measures by vertical lines.

142

Measures 142-144 of a piano duet. The right hand (treble clef) continues the melody with eighth and sixteenth notes. The left hand (bass clef) provides a harmonic accompaniment with eighth and sixteenth notes. The notation is color-coded: red for the right hand and blue for the left hand. The background is divided into three measures by vertical lines.

145

Measures 145-146 of a piano duet. The right hand (treble clef) continues the melody with eighth and sixteenth notes. The left hand (bass clef) provides a harmonic accompaniment with eighth and sixteenth notes. The notation is color-coded: red for the right hand and blue for the left hand. The background is divided into two measures by a vertical line.

147

Measures 147-148 of a piano duet. The right hand (treble clef) continues the melody with eighth and sixteenth notes. The left hand (bass clef) provides a harmonic accompaniment with eighth and sixteenth notes. The notation is color-coded: red for the right hand and blue for the left hand. The background is divided into two measures by a vertical line.